

# Art Department



Eric Jamieson

[www.art-dept.com](http://www.art-dept.com)



# Art Department



Eric Jamieson

[www.art-dept.com](http://www.art-dept.com)

# Art Department



Eric Jamieson

[www.art-dept.com](http://www.art-dept.com)



# Art Department



# Eric Jamieson

www.art-dept.com



# Art Department



Eric Jamieson

[www.art-dept.com](http://www.art-dept.com)

# Art Department



Eric Jamieson

[www.art-dept.com](http://www.art-dept.com)



# Art Department



Eric Jamieson

[www.art-dept.com](http://www.art-dept.com)



# Art Department



Eric Jamieson

[www.art-dept.com](http://www.art-dept.com)



# Art Department



Eric Jamieson

[www.art-dept.com](http://www.art-dept.com)

# Art Department



Eric Jamieson

[www.art-dept.com](http://www.art-dept.com)



# Art Department



Eric Jamieson

[www.art-dept.com](http://www.art-dept.com)



# Art Department

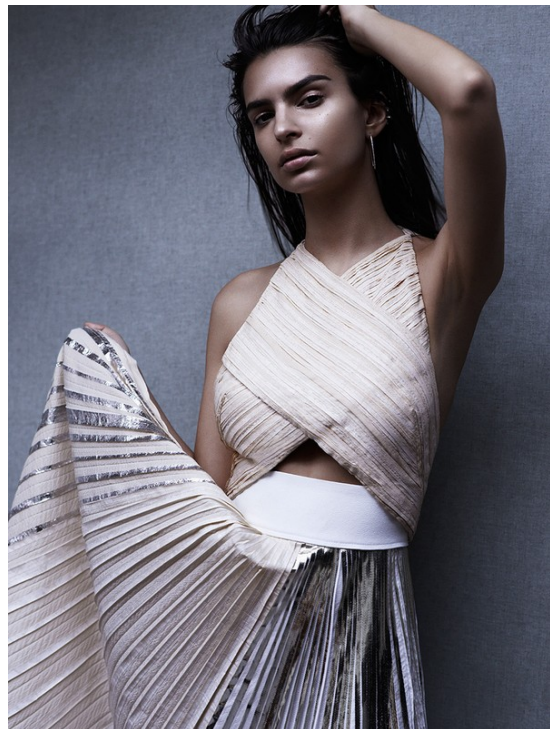


Eric Jamieson

[www.art-dept.com](http://www.art-dept.com)



# Art Department



Eric Jamieson

[www.art-dept.com](http://www.art-dept.com)

# Art Department



Eric Jamieson

[www.art-dept.com](http://www.art-dept.com)



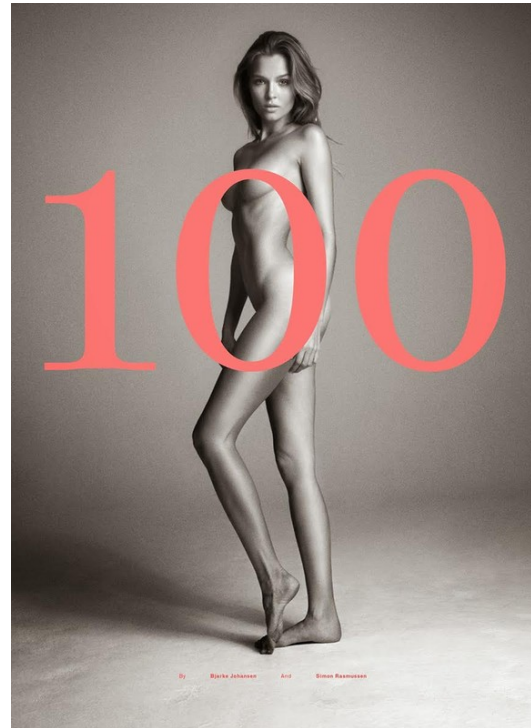
# Art Department



Eric Jamieson

[www.art-dept.com](http://www.art-dept.com)

# Art Department



Eric Jamieson

[www.art-dept.com](http://www.art-dept.com)



# Art Department

## NEW YORK DOLLS

PHOTOGRAPHY BY CARA STROCKE  
STYLING BY SMITH BUSHNICK AT FACTORY DOWNTOWN  
HAIR BY ERIC JAMIESON  
MAKEUP BY KALI AT THE WALL GROUP  
PHOTOGRAPHER ASSISTANT RIMMA BARRETTA  
STYLIST ASSISTANTS FREDERICK RADIN AND MARCELA JACOBINA  
CASTING BY MATTHEW LASCHEY

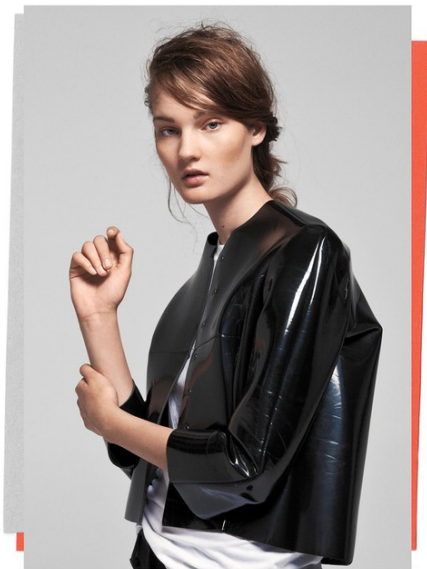
NEW YORK  
36



EMILY DI DONATO

HAIR: KIM LEE, MAKEUP: JEFFREY MATHIAS, STYLING: JEFFREY MATHIAS

NEW YORK  
37



KIRSI PYRHONEN

STYLING: JEFFREY MATHIAS, HAIR: KIM LEE, MAKEUP: JEFFREY MATHIAS

NEW YORK  
38

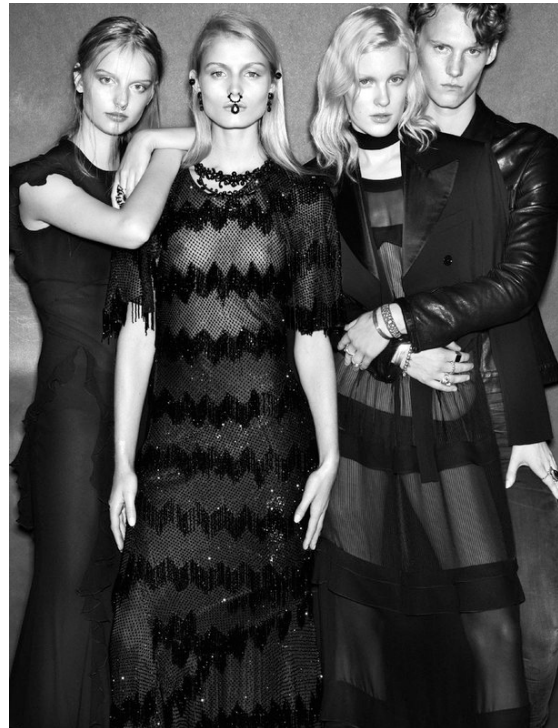


DEREK  
LAM

## Eric Jamieson

[www.art-dept.com](http://www.art-dept.com)

# Art Department



Eric Jamieson

[www.art-dept.com](http://www.art-dept.com)



# Art Department



206 | wallpaper\*



## Eric Jamieson

[www.art-dept.com](http://www.art-dept.com)

# Art Department



Eric Jamieson

[www.art-dept.com](http://www.art-dept.com)



# Art Department



Eric Jamieson

[www.art-dept.com](http://www.art-dept.com)

# Art Department



Eric Jamieson

[www.art-dept.com](http://www.art-dept.com)



# Art Department



Eric Jamieson

[www.art-dept.com](http://www.art-dept.com)

# Art Department



Eric Jamieson

[www.art-dept.com](http://www.art-dept.com)



# Art Department



Eric Jamieson

[www.art-dept.com](http://www.art-dept.com)

# Art Department

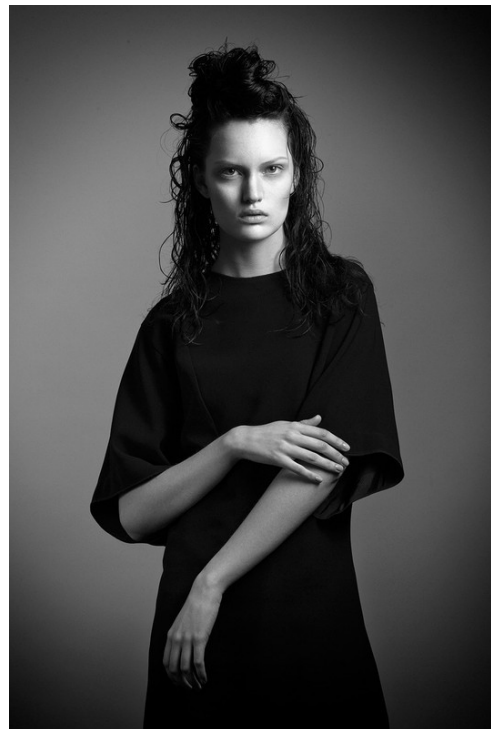
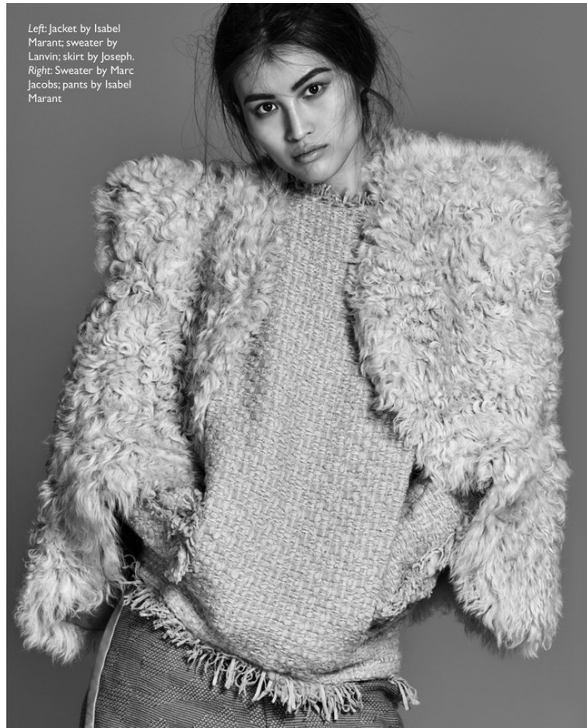


Eric Jamieson

[www.art-dept.com](http://www.art-dept.com)



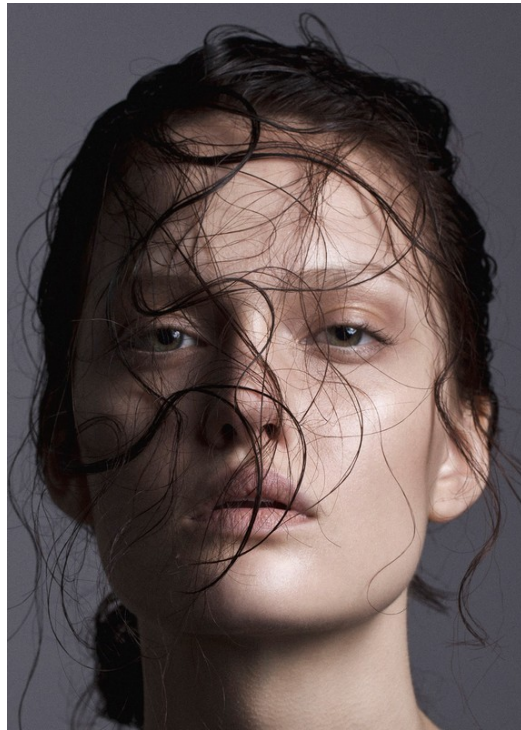
# Art Department



Eric Jamieson

[www.art-dept.com](http://www.art-dept.com)

# Art Department



Eric Jamieson

[www.art-dept.com](http://www.art-dept.com)



# Art Department



Eric Jamieson

[www.art-dept.com](http://www.art-dept.com)

# Art Department



Nadine Leopold  
in  
**THE**  
*-New-*  
**SOMETHING**

wearing an appropriate mismatch by  
*Valentina Nardi Martin*  
the classic way

Photography by Billy Kidd

AT GREY WE USE THE WORD "COOL" A LOT BECAUSE WE STILL BELIEVE IT IS POSSIBLE, DESPITE THE MALEVOLENT EFFORTS OF CONFUSION, TO CREATE A NEW SOMETHING ON THE EDGE OF CIVILIZATION WHILE PRESERVING A COHERENCE WORTHY OF A NATIVE IN THE RAINFOREST. IT'S ALSO ABOUT NADINE LEOPOLD LOOKING DIVINE WITH CLOTHES, AGAINST THE EMPTINESS OF A BLACK BACKDROP, ALSO KNOWN AS THE UNIVERSE.

hair ERIC JAMIESON at BRIDGE ARTISTS, makeup SOUHI at JED ROOT, model's agency IMG NEW YORK

The frenzy of a crisp maroon dress by VIVIENNE WESTWOOD GOLD LABEL is crowned by a floral foulard, doubled with a sea-blue keffiyeh draped on one shoulder by 5-MIN.

54



## Eric Jamieson

[www.art-dept.com](http://www.art-dept.com)



# Art Department



White knit sheer vest top, white cotton high-waisted skirt Gaeul



Blue denim jeans Levi's, white cotton kaftan with black leather trim Jasmin Shokrian

Eric Jamieson

[www.art-dept.com](http://www.art-dept.com)

# Art Department



Eric Jamieson

[www.art-dept.com](http://www.art-dept.com)



# Art Department



jewelry special



The modernity of STEEL combined with PRECIOUS STONES creates a YOUTHFUL sensibility

Cartier Lady watch with white case, diamond bezel, and mother-of-pearl and diamond dial and bracelet by TAG Heuer, £3,128. Panther de Cartier ring in 18k white gold, emeralds and diamonds by Cartier, £35,500. Contour by Kiki de Montparnasse, £260



A delicate and SENSUAL construction makes an INTEGRAL bracelet an everlasting TIME ROOM

Tortue watch in white gold with gold diamonds and a rhodium finish by Cartier, £26,000. bracelet with white and gold diamonds by Messika, £3,710. Panther de Cartier ring in 18k white gold by Cartier, £3,992. Contour by Kiki de Montparnasse, £260

## Eric Jamieson

[www.art-dept.com](http://www.art-dept.com)

# Art Department



Eric Jamieson

www.art-dept.com