

Art Department



Abrigo, pantalón
y zapatos,
Dolce & Gabbana

THE ART OF SOLITUDE

Realización **Fernando Carrillo**
Fotos **Jacob + Carol**

Nicolas Eldin

www.art-dept.com

Art Department



Nicolas Eldin

www.art-dept.com

Art Department



Nicolas Eldin

www.art-dept.com

Art Department



Nicolas Eldin

www.art-dept.com

Art Department



Camisa de cuero
y pantalón,
Dolce & Gabbana

MODELO:
IVAN VUCKOVIC
@ **DNA MODELS**
GROOMER: **NICOLAS**
ELDIN @ ART
DEPARTMENT
COORDINACIÓN DE
MODA: **EMILY DRAKE**
ASISTENTE DE MODA:
LEXI LANG
JACOB + CARROL @
THE GALLERY AGENCY

Nicolas Eldin

www.art-dept.com

Art Department



Nicolas Eldin

www.art-dept.com

Art Department



Nicolas Eldin

www.art-dept.com

Art Department



Nicolas Eldin

www.art-dept.com

Art Department



Suéter, bufanda,
chamarra, pantalón
y botas. **Dolce
& Gabbana**

Nicolas Eldin

www.art-dept.com

Art Department



Camisa de seda,
suéter de cuello
alto y pantalón,
Dolce & Gabbana

Nicolas Eldin

www.art-dept.com

Art Department



Nicolas Eldin

www.art-dept.com

Art Department



Nicolas Eldin

www.art-dept.com

Art Department



Nicolas Eldin

www.art-dept.com

Art Department



Nicolas Eldin

www.art-dept.com

Art Department



Nicolas Eldin

www.art-dept.com

Art Department



Nicolas Eldin

www.art-dept.com

Art Department



Nicolas Eldin

www.art-dept.com

Art Department



Nicolas Eldin

www.art-dept.com

Art Department



Nicolas Eldin

www.art-dept.com

Art Department



Nicolas Eldin

www.art-dept.com

Art Department



Nicolas Eldin

www.art-dept.com

Art Department



Nicolas Eldin

www.art-dept.com

Art Department

ESSENTIAL HOMME



MALEFASHIONTRENDS.COM

Nicolas Eldin

www.art-dept.com

Art Department



Nicolas Eldin

www.art-dept.com

Art Department

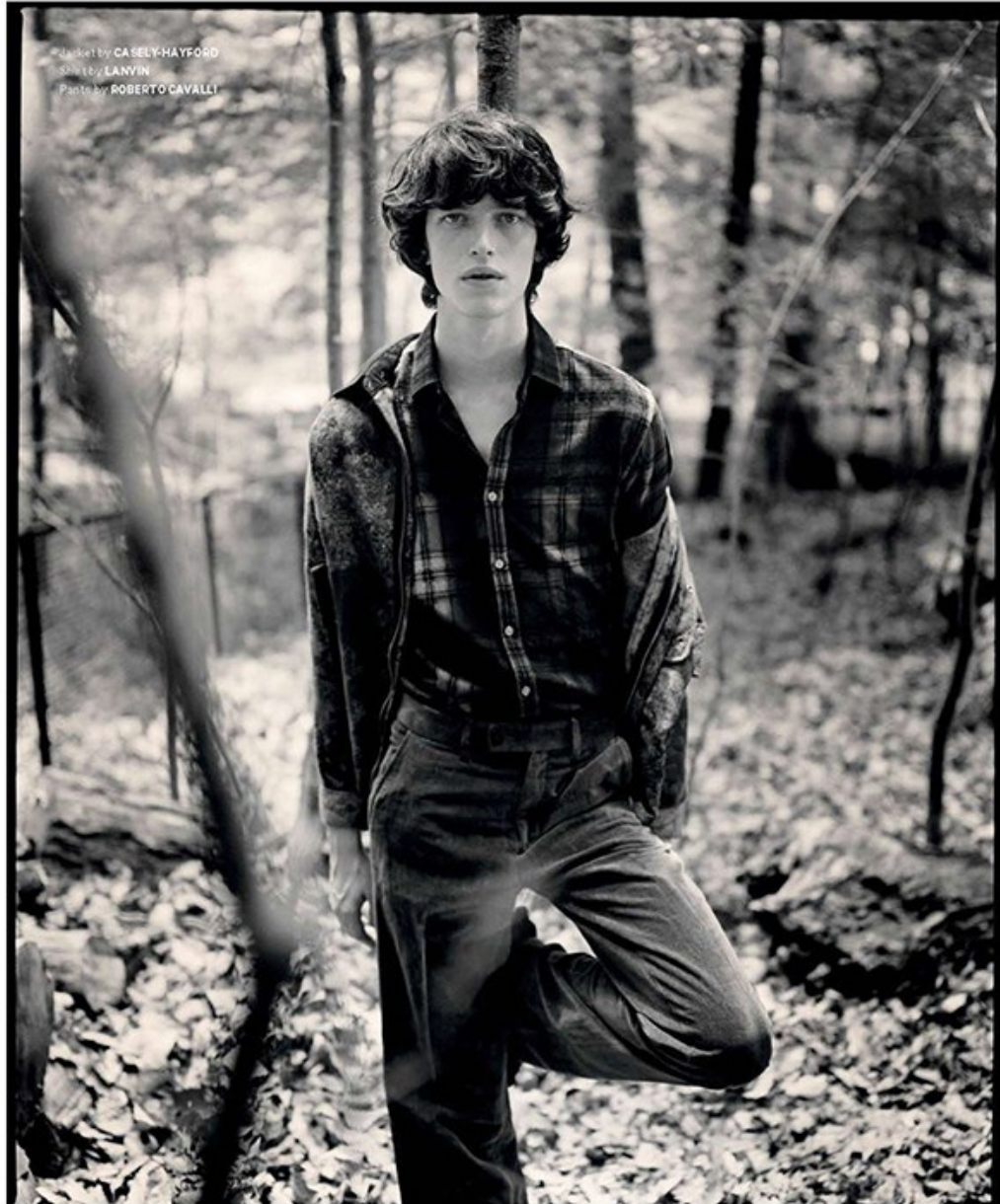


Nicolas Eldin

www.art-dept.com

Art Department

ABSENT DAZE



Jacket by CASELY-HAYFORD
Shirt by LANVIN
Pants by ROBERTO CAVALLI

MALEFASHIONTRENDS.COM

Nicolas Eldin

www.art-dept.com

Art Department

ESSENTIAL HOMME



MALEFASHIONTRENDS.COM

Nicolas Eldin

www.art-dept.com

Art Department

ABSENT DAZE



MALEFASHIONTRENDS.COM

Nicolas Eldin

www.art-dept.com

Art Department



Nicolas Eldin

www.art-dept.com

Art Department



Nicolas Eldin

www.art-dept.com

Art Department



Nicolas Eldin

www.art-dept.com

Art Department



Portfolio

An internal stairwell allows visitors to flow freely between the eight storeys, or they can use one of four distinctive lifts conceived by artist Richard Artschwager

Suit, £450; shirt, £80, both by Tommy Hilfiger. Tie, £75, by Richard James. Shoes, £385, by Church's

Nicolas Eldin

www.art-dept.com

Art Department



Nicolas Eldin

www.art-dept.com

Art Department



Nicolas Eldin

www.art-dept.com

Art Department



Nicolas Eldin

www.art-dept.com

Art Department



Nicolas Eldin

www.art-dept.com

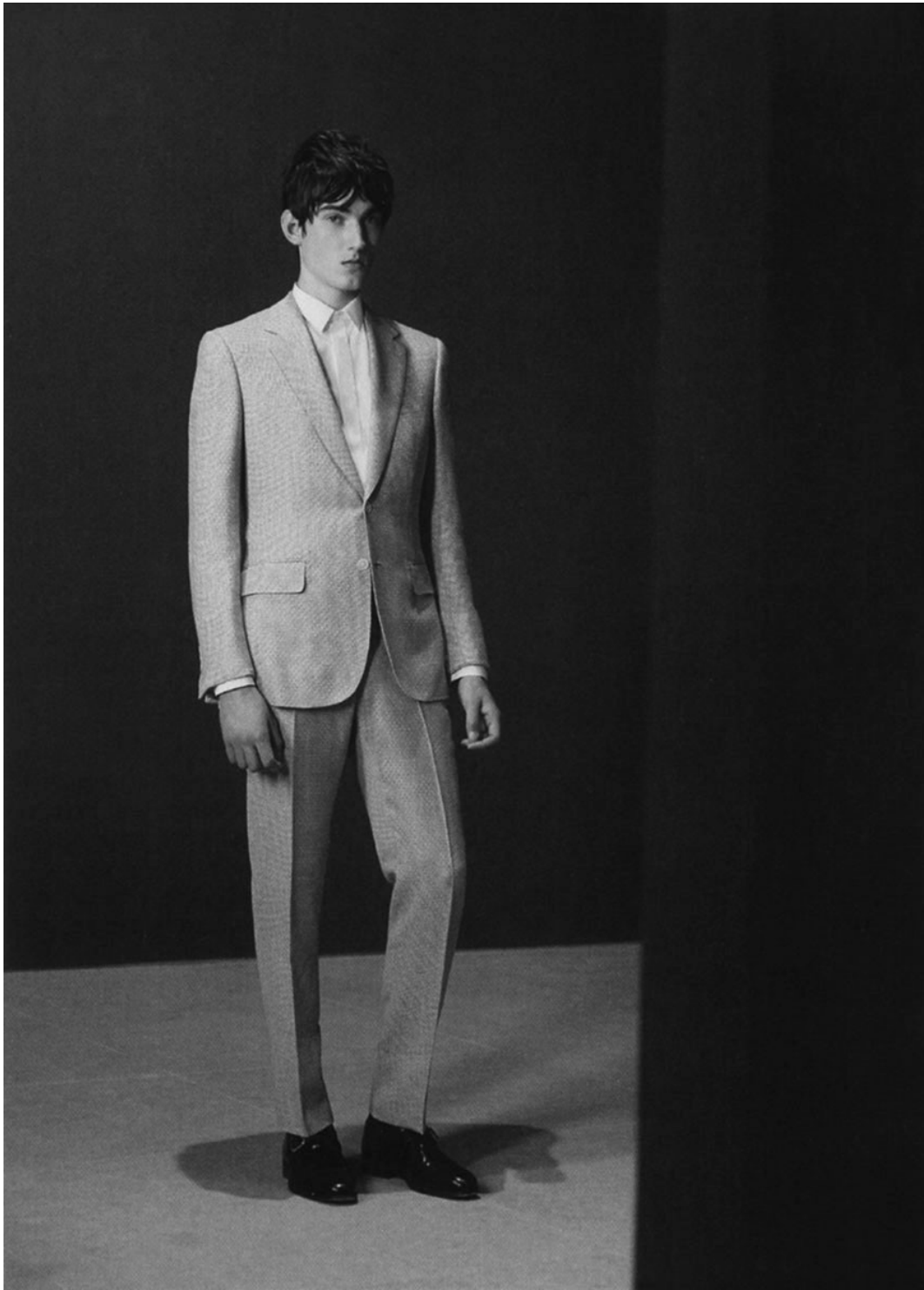
Art Department



Nicolas Eldin

www.art-dept.com

Art Department



Nicolas Eldin

www.art-dept.com

Art Department

Portfolio

The new Whitney will also feature a 170-seat theatre, a ground floor retail space and a top floor café

This page, suit, £1,750; shirt £195, both by Kilgour. Tie, £75, by Richard James. Shoes, £385, by Church's

Opposite, Adam wears jacket (part of suit), £1,590; shirt, £295; trousers, £490, all by Dunhill. Shoes £385, by Church's

Callum R wears coat, £1,790; jacket, £2,090; trousers, £790, all by Ermenegildo Zegna Couture. Shirt, £190, by Corneliani. Shoes, £385, by Church's

For stockists, see page 300



Hair: Nicolas Eldin at Art Department

Make-up: Ingeborg using Kiehl's at TMC-LA

Photographer's assistants: Spenser Ostrander, Satoshi Matoda

Digital operator: Ross Thompson

Fashion assistants: Malaika Crawford, Eleanor Vousden, Sophie Watson, Eyob Yohannes

Models: Adam Butcher at IMG, Callum Rockall and Callum Ward at New York Model Management

Casting: Julia Lange

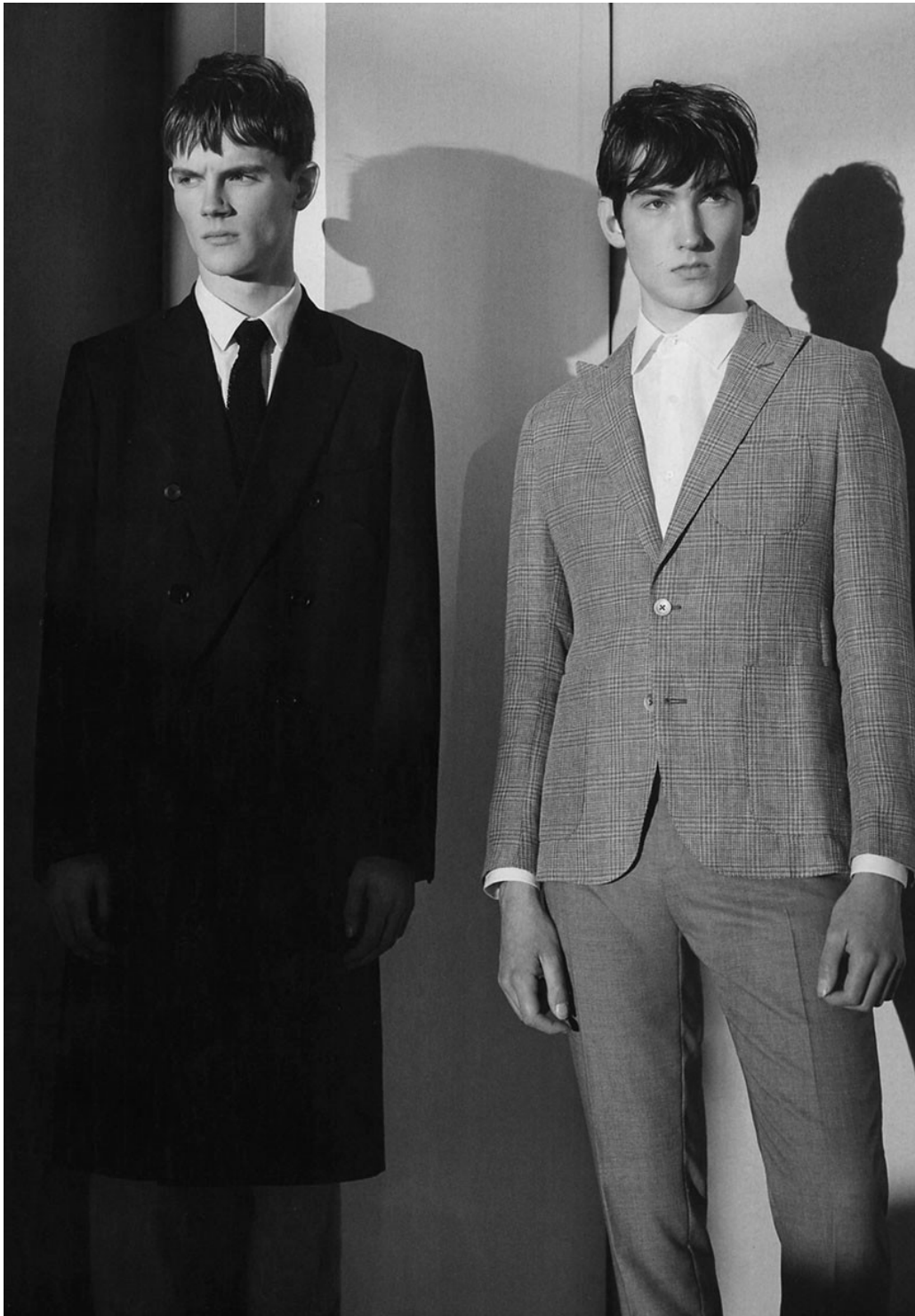
Production: HMS Production

Shot on location at the Whitney Museum of American Art, 99 Gansevoort Street, New York, whitney.org

Nicolas Eldin

www.art-dept.com

Art Department



Nicolas Eldin

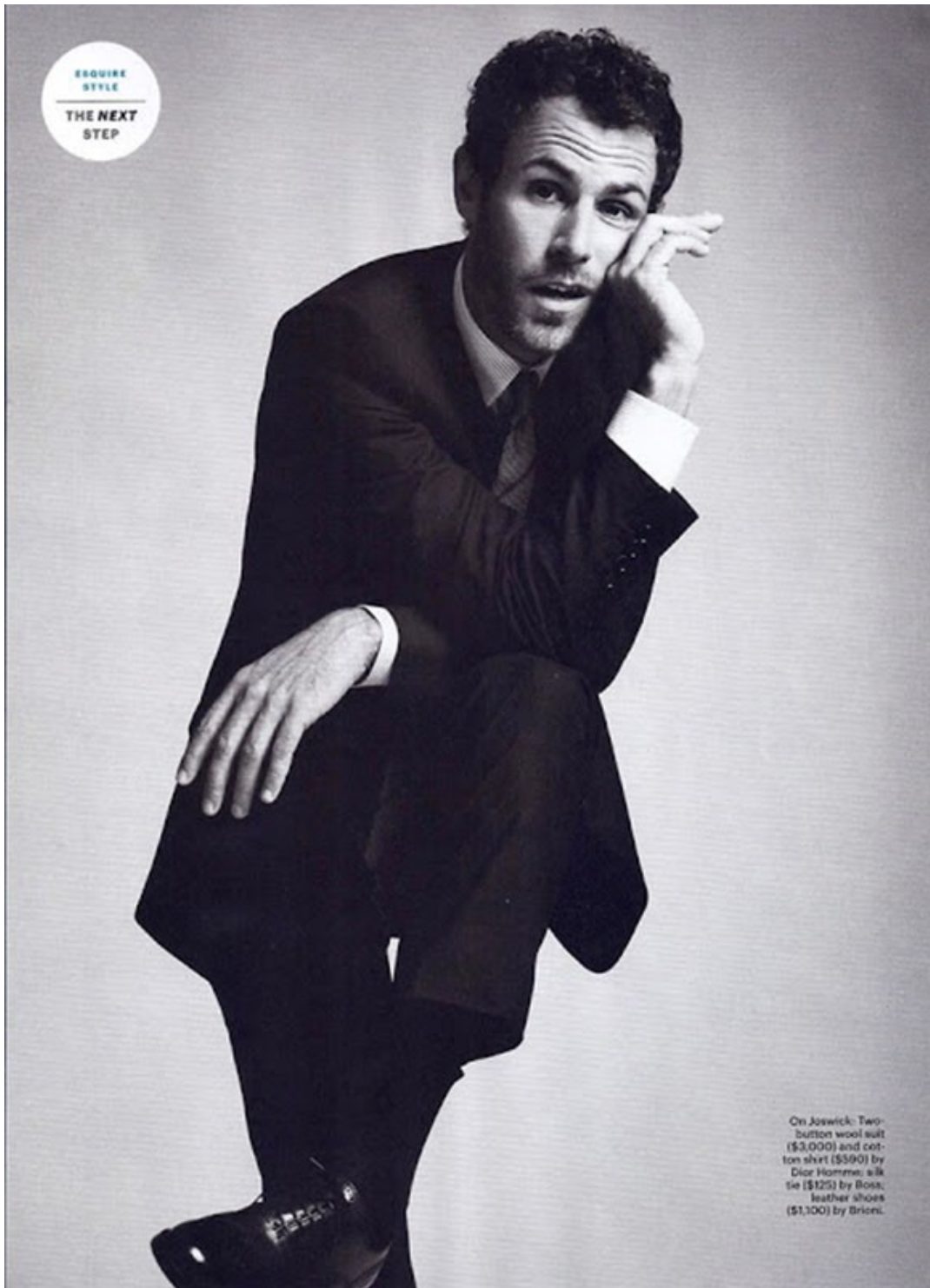
www.art-dept.com

Art Department



Nicolas Eldin

Art Department

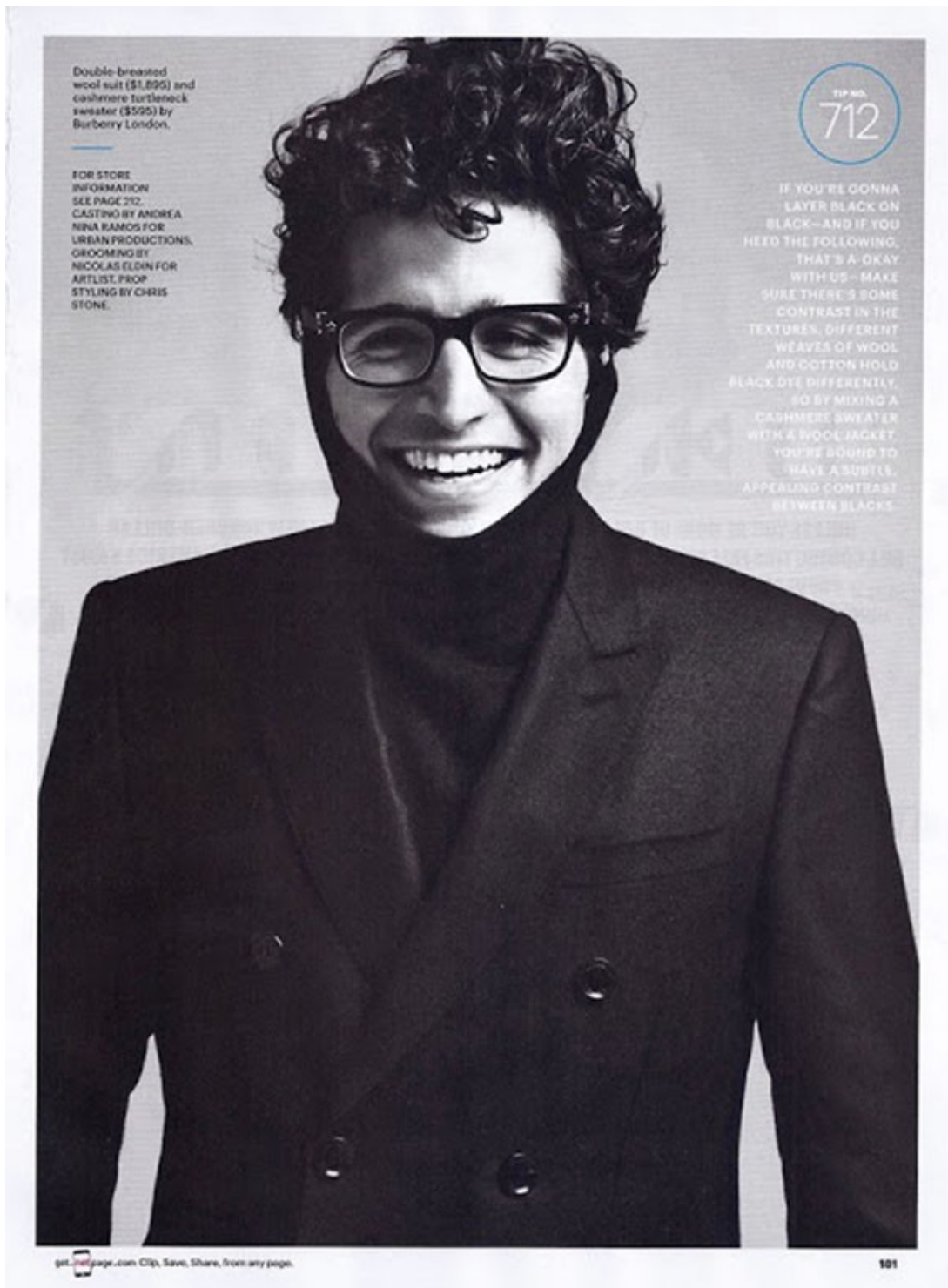


On Jorwick: Two-button wool suit (\$3,000) and cotton shirt (\$590) by Dior Homme; silk tie (\$125) by Boss; leather shoes (\$1,100) by Briele.

Nicolas Eldin

www.art-dept.com

Art Department



Nicolas Eldin

www.art-dept.com

Art Department



TIP NO.
452

FORGET THE FLAT, SOULLESS SURFACES THAT TYPIFY MOST DRESSY SUIT CLOTHS AND LOOK FOR WEAVES WITH UNCOMMON TEXTURES. THE SUBTLE HORIZONTAL GRAIN OF THIS TWO-PIECE ADDS DIMENSION AND DEPTH TO THE SUIT AND DEMANDS A CLOSER LOOK.

Two-button wool suit (\$1,295) and cotton shirt (\$395) by Calvin Klein Collection; cashmere wool-and-silk tie (\$250) by Brunello Cucinelli.

get it page.com Clip, Save, Share, from any page. Download free from the iTunes App Store or Google Play.

Nicolas Eldin

www.art-dept.com

Art Department



This page, on Ambrecht:
Two-button wool suit (\$3,270), cotton shirt (\$410), silk tie (\$175), and silk pocket square (\$130) by Dunhill; leather shoes (\$720) by Santoni; steel Star Retrograde automatic watch (\$4,865) by Montblanc. Opposite, on Shawn Joswick, denim designer and consultant: Double-breasted wool-and-silk suit (\$4,595) by Giorgio Armani; cotton shirt (\$99) by Banana Republic; silk tie (\$135) by John Varvatos; leather shoes (\$410) by Dunhill.

177

Nicolas Eldin

www.art-dept.com

Art Department



TIP NO.
517

LOOK CLOSE.
CUM-LOOOSER. SEE
THAT SLIGHT SHEEN?
THAT'S WHAT YOU
GET WITH A WOOL-
AND-SILK WOVEN
SUIT. IT'S ALL BUT
UNDETECTABLE FROM
A DISTANCE, YET
AT ARM'S LENGTH
IT DELIVERS
A QUIET PUNCH.

Nicolas Eldin

www.art-dept.com

Art Department



Nicolas Eldin

www.art-dept.com

Art Department



Nicolas Eldin

www.art-dept.com

Art Department



ESQUIRE
STYLE

THE NEXT
STEP

This page, on Thomas Wirthensch, documentary filmmaker: Cotton trench coat (\$3,950) by Louis Vuitton; three-button cashmere-and-silk suit (\$8,562), cotton shirt (\$870), and cashmere-wool-and-silk tie (\$280) by Kiton; leather shoes (\$900) by Santoni. Opposite: Two-button wool-and-cashmere suit (\$2,950), cotton shirt (\$730), and silk tie (\$215) by Louis Vuitton; steel Ballon Bleu watch (\$5,900) by Cartier.

173

Nicolas Eldin

www.art-dept.com

Art Department

CARBON COPY



FRANCISCO LACHOWSKI / WALTER LEON WADSWORTH / DANNY SCHWARTZ / KIMMY HERRANDREZ / NICKY AYON
NICOLAS RIPOLL / ASHLEY BRONSON PIERRE-MARIAL / MODEL OF THE MONTH IS DAVID BIVELA

Nicolas Eldin

www.art-dept.com

Art Department



Nicolas Eldin

www.art-dept.com

Art Department



Nicolas Eldin

www.art-dept.com

Art Department



Nicolas Eldin

www.art-dept.com

Art Department



Axel wears
Jacket by LANVIN
Pants with suspenders by VIVIENNE

Nicolas Eldin

www.art-dept.com

Art Department



Nicolas Eldin

www.art-dept.com

Art Department



Nicolas Eldin

www.art-dept.com

Art Department



Nicolas Eldin

www.art-dept.com

Art Department



Nicolas Eldin

www.art-dept.com

Art Department



Nicolas Eldin

www.art-dept.com

Art Department



Nicolas Eldin

www.art-dept.com

Art Department



Pierre wears
Jacket by L'AFY
Shirt by DIOR HOMME
the FREESOUL

Nicolas Eldin

www.art-dept.com

Art Department



Maithe wears
White shirt by LOUIS VUITTON
Hat by LANVIN
Suspenders stylist's own

Nicolas Eldin

www.art-dept.com

Art Department



Pierre wears
Shirt by UNITY
Denim apron by DSQUARED
Axel wears
Check shirt by FREESOUL

Nicolas Eldin

www.art-dept.com

Art Department

Nicolas wears
T-shirt by DSQUARED / Leggings with suspenders by BERNHARD WILLHELM
necklace by CEDRIC JACQUEMYN / Leather bracelet by VIVIENNE WESTWOOD MAN



PHOTOGRAPHY BY NICOLAS VALOIS / STYLING BY RENE GLOOR
STYLIST ASSISTANT: SIMON NYGARD
MAKE-UP BY YACINE DIALLO / HAIR BY NICOLAS ELGIN
DIGITAL ASSISTANT: EMMANUEL@IMAGIN
PHOTOGRAPHER ASSISTANT: ELEONORA BRAVI
NICOLAS RIPOLL AT BANANAS / FRANCISCO LACHOWSKI AT FORD EUROPE
MALTHE LIND MADSEN & AXEL BRORSON AT FORD EUROPE
AND PIERRE-HARALD LEDUCQ AT MAJOR PARIS

Nicolas Eldin

www.art-dept.com

Art Department



Nicolas Eldin

www.art-dept.com

Art Department



Nicolas Eldin

www.art-dept.com

Art Department



Nicolas Eldin

www.art-dept.com

Art Department



Nicolas Eldin

www.art-dept.com

Art Department



Nicolas Eldin

www.art-dept.com

Art Department



Nicolas Eldin

www.art-dept.com

Art Department



Nicolas Eldin

www.art-dept.com

Art Department



Nicolas Eldin

www.art-dept.com

Art Department



Nicolas Eldin

www.art-dept.com

Art Department



Nicolas Eldin

www.art-dept.com

Art Department

Tendance

Jeu, set et mode

Un match sur terre battue nourri de références aux années 1920, période mythique du tennis. Cotonnades, maille et tailoring sport jouent le grand chelem sur une palette de blancs et d'écrus.

PHOTOS :
KOTO BOLOPO POUR
L'EXPRESS STYLES
RÉALISATION :
MIKA MIZUTANI

42 © 15/6/2011

15/6/2011 © 43

Nicolas Eldin

www.art-dept.com

Art Department



Robert
Pull col V en coton
torsadé, Lacoste, 125 €.
Pantalon de pyjama
en popeline de coton,
Hermès, 450 €.
Chemise en coton,
Smalto, 105 €.
Cravate en soie,
Paul Smith, 87 €.
Chaussures Zizi, Repetto.

Page de droite.
Chris
Pull en maille
de coton tricoté
à la main,
Gucci, 2 250 €.
Bermuda en coton,
Cerruti, 230 €.

Nicolas Eldin

www.art-dept.com

Art Department



Nicolas Eldin

www.art-dept.com

Art Department



Robert
Pull en maille de coton,
Barberry Sport, 295 €.
Chemise en coton,
Ermengildo Zegna, 180 €.
Cravate en soie tricotée,
Sandro, 95 €. Pantalon en
denim, Paul Smith, 227 €.

Page de droite.

De g. à dr.

Gerhard

Polo en piqué de coton,
Petit Bateau, 40 €.
Pantalon de pyjama
en popeline de coton,
Hermès, 450 €.
Cravate rayée en soie,
Lanvin, 300 €.
Derbys en cuir et lin,
Salvatore Ferragamo, 450 €.
Ceinture tressée en Nylon,
L'Aiglon, 93 €.

Robert

Polo en piqué de coton,
Lacoste Live, 85 €.
Cravate en satin de soie,
Paul Smith, 87 €.
Pantalon en coton,
Azzaro, 135 €.

Chris

Polo en piqué de coton,
Lacoste, 78 €.
Cravate en soie tricotée,
Sandro, 95 €.
Chaussures de sport
en cuir, Hermès, 550 €.
Pantalon de costume
en coton et soie,
Kenzo, 920 € le costume.

Antoine

Polo en coton,
Sandro, 95 €.
Pantalon de pyjama
en popeline de coton,
Hermès, 450 €.
Cravate en soie tricotée,
Sandro, 95 €.
Chaussures Zizi, Repetto.
Ceinture vintage,
Kiliwach.

Nicolas Eldin

www.art-dept.com

Art Department



Nicolas Eldin

www.art-dept.com

Art Department



Nicolas Eldin

www.art-dept.com

Art Department



Nicolas Eldin

www.art-dept.com

Art Department



Gerhard

Cardigan en coton,
Louis Vuitton, 990 €.
Chemise en coton,
Ermenegildo Zegna, 180 €.
Cravate en maille
de soie, Hermès, 250 €.

Page de droite.
Antoine

Veste en lin,
Paul & Joe, 510 €.
Polo en coton,
Sandro, 95 €.
Bermuda en coton,
IKKS, 90 €.
Chaussures Ziri, Repetto.
Foulard Losange,
en popeline de coton,
Hermès, 180 €.

Les mannequins portent
des chaussettes montantes
blanches Falke, 16 €.

Nicolas Eldin

www.art-dept.com

Art Department



Remerciements au
Racing Club de France,
Club La Boule,
route du Pont-Colbert,
Versailles (Yvelines),
01-39-50-59-41,
www.racingclubdefrance.net/
racingtennis/
et au Musée de la Fédération
française de tennis,
Stade Roland-Garros,
7, avenue Gordon-Bennett,
Paris (XVI^e),
01-47-43-48-48,
www.fnt.fr/site-tenniscur/

Mannequins :
Gerhard Freidl c/o New
Medison / Chris Beck,
Robert Laby et Antoine des
Barvaux c/o Succos,
Coiffeur : Nicolas Eldin
c/o Artlist.
Opérateur digital :
Thomas c/o Imag'in.
Assistants du photographe :
Mathieu Boutang et
Christian Borth.
Assistant styliste :
Antoine Seguin
avec Alice Ita.
Production :
Ghislaine Perria.
Cartier d'adresses page 85

Nicolas Eldin

www.art-dept.com