

Art Department



Scott McMahan

www.art-dept.com

Art Department



Scott McMahan

www.art-dept.com

Art Department



Scott McMahan

www.art-dept.com

Art Department



Scott McMahan

www.art-dept.com

Art Department



Scott McMahan

www.art-dept.com

Art Department



Scott McMahan

www.art-dept.com

Art Department



Scott McMahan

www.art-dept.com

Art Department



Scott McMahan

www.art-dept.com

Art Department



Scott McMahan

www.art-dept.com

Art Department



Scott McMahan

www.art-dept.com

Art Department



Scott McMahan

www.art-dept.com

Art Department



STYLE | **Notebook**

2020
**WINTER
FASHION**
PREVIEW

Cool Days, Warm Nights

A subdued holiday season is the perfect excuse for these laid-back winter layers: classic wool sweaters, the return of the long-sleeve polo, and one damn good tweed blazer.

Canali Armure Flat-front Wool Trousers and Blueberry Marl Turtleneck [\$530, \$695; canali.com]; **Dunhill** Houndstooth Half Wrap Jacket [\$2,095; dunhill.com]

STYLING BY SCOTT MCCAMHAN & ART DEPARTMENT. CREATIVE DIRECTION AND PRODUCTION BY KYLE B. BEECH. MODELS: JAMES WELLS & THE SOCIETY. MAKEUP: AND SHEILA TRINIDAD & STYLING MANAGEMENT. HAIR: AT-ORION GOMORY BROOKLYN

photographs by GREG VAUGHAN

MEN'S JOURNAL | NOV/DEC 2020 | 025

Scott McMahan

www.art-dept.com

Art Department



Scott McMahan

www.art-dept.com

Art Department



Scott McMahan

www.art-dept.com

Art Department



Scott McMahan

www.art-dept.com

Art Department



Scott McMahan

www.art-dept.com

Art Department



This Page
Total Look MISSIONI
Necklace JOHN HARDY
Opposite Page
Sweaters NICCE

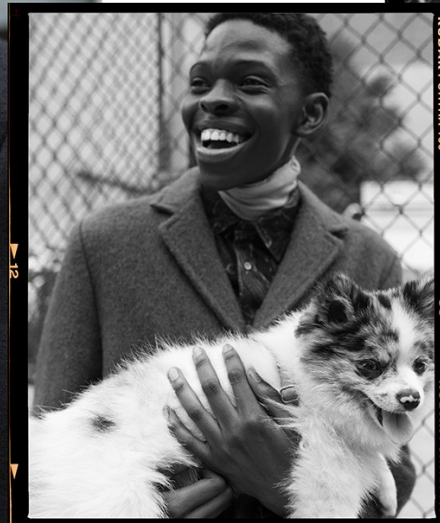
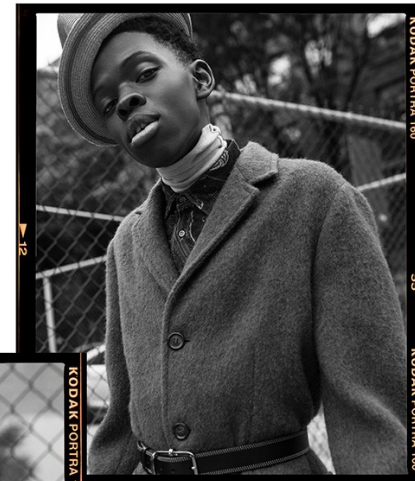
Scott McMahan

www.art-dept.com

Art Department



Left
Coat & Shirt TIE
Right
Coat, Shirt & Sweater ASPIES
HAI ALBERTUS SWANEPOEL
BRI H. BISCONE



Grooming SCOTT McMAHAN at Art Department using Boy de Chanel
Retoucher LESANA BENSON
Model MALLE GUEYE at Fusion Models
Special thanks to
End of History - 548 1/2 Hudson Street New York NY
Julius Bar - 159 W 10th St, New York, NY
Ship and Ship - 224 Waverly Pl, New York, NY

Scott McMahan

www.art-dept.com

Art Department



Scott McMahan

www.art-dept.com

Art Department



Scott McMahan

www.art-dept.com

Art Department



Scott McMahan

www.art-dept.com

Art Department



Scott McMahan

www.art-dept.com

Art Department



Scott McMahan

www.art-dept.com

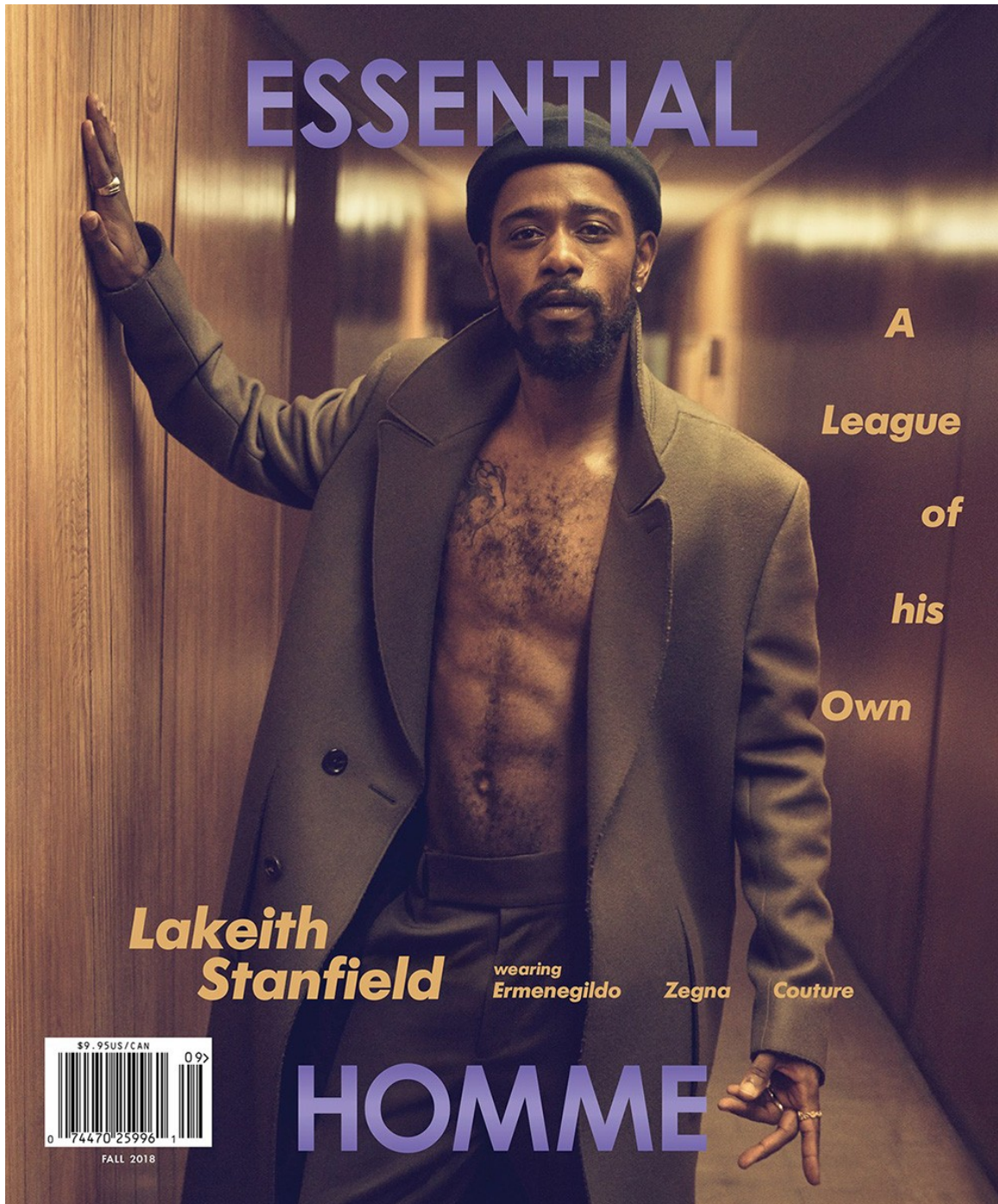
Art Department



Scott McMahan

www.art-dept.com

Art Department



Scott McMahan

www.art-dept.com

Art Department



Scott McMahan

www.art-dept.com

Art Department



Scott McMahan

www.art-dept.com

Art Department



Scott McMahan

www.art-dept.com

Art Department



Scott McMahan

www.art-dept.com

Art Department



Scott McMahan

www.art-dept.com

Art Department



Scott McMahan

www.art-dept.com

Art Department



Scott McMahan

www.art-dept.com

Art Department



Scott McMahan

www.art-dept.com

Art Department



Scott McMahan

www.art-dept.com

Art Department



Scott McMahan

www.art-dept.com

Art Department



Scott McMahan

www.art-dept.com

Art Department



Scott McMahan

www.art-dept.com

Art Department



Scott McMahan

www.art-dept.com

Art Department



Scott McMahan

www.art-dept.com

Art Department



Scott McMahan

www.art-dept.com

Art Department



Scott McMahan

www.art-dept.com

Art Department



Scott McMahan

www.art-dept.com

Art Department



Scott McMahan

www.art-dept.com

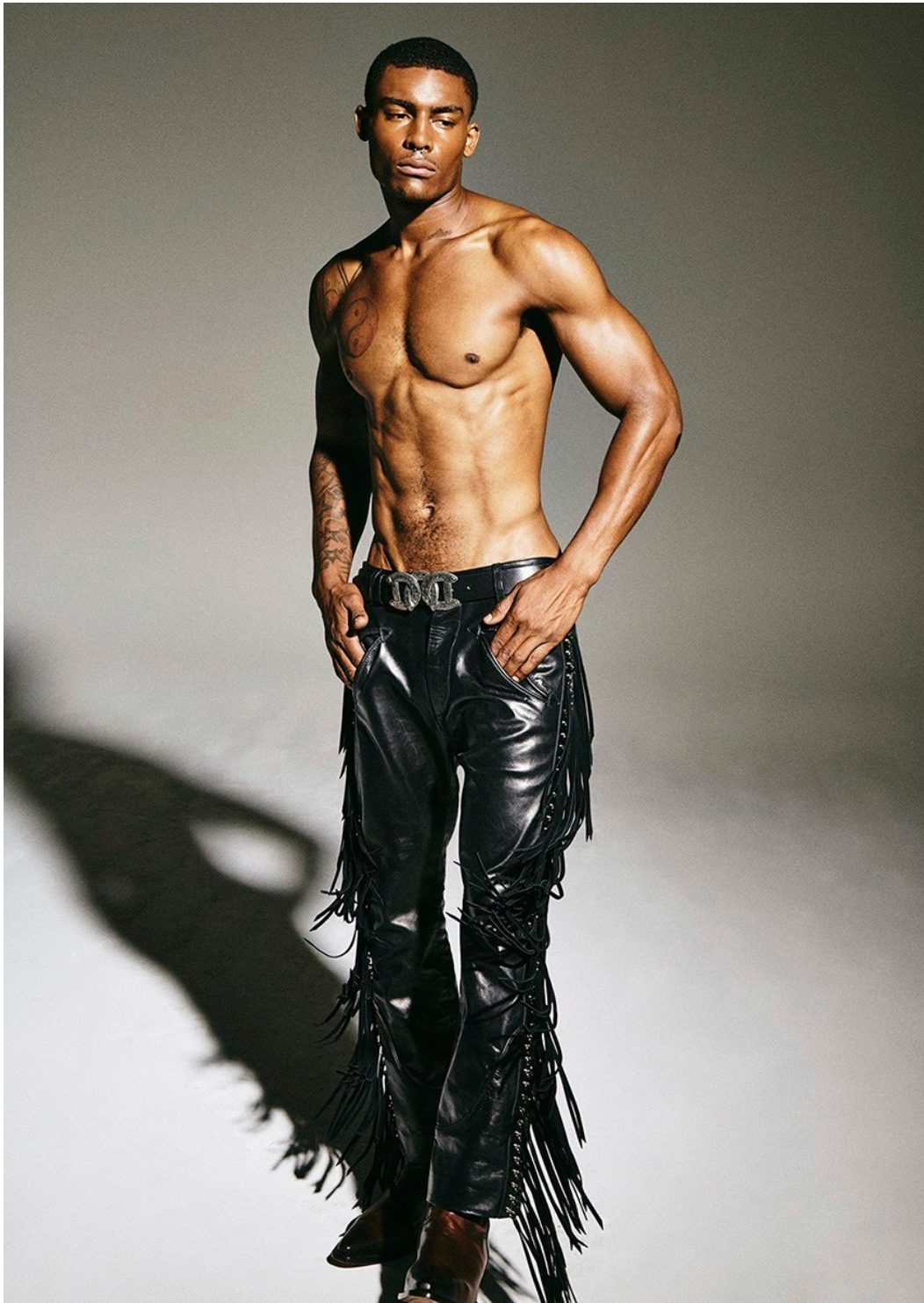
Art Department



Scott McMahan

www.art-dept.com

Art Department



Scott McMahan

www.art-dept.com

Art Department



Scott McMahan

www.art-dept.com

Art Department



Scott McMahan

www.art-dept.com

Art Department



Scott McMahan

www.art-dept.com

Art Department



Scott McMahan

www.art-dept.com

Art Department



Scott McMahan

www.art-dept.com

Art Department

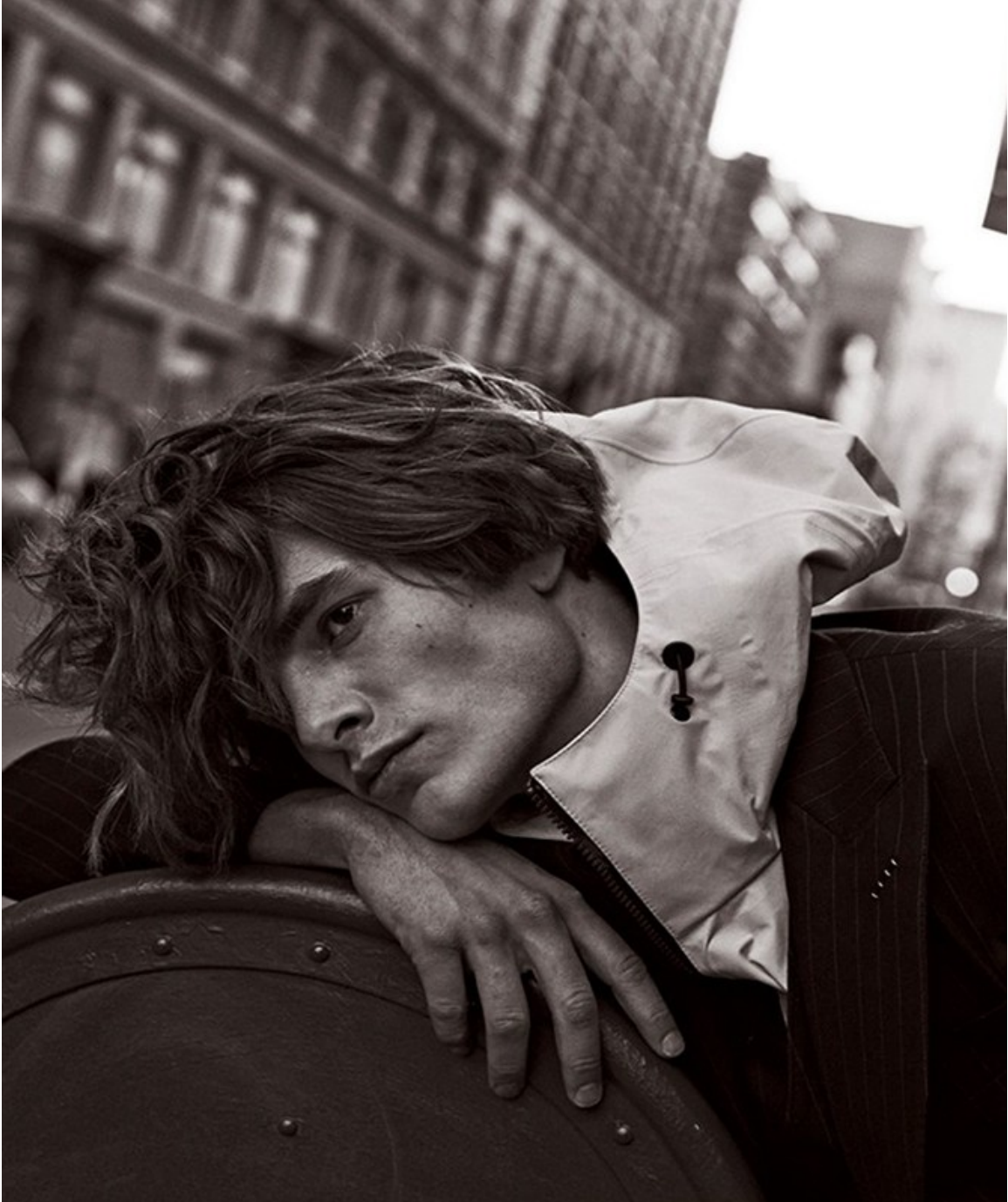


Suit by **DOLCE & GABBANA**
Jacket by **VINCE**
Sandals throughout by **JIL SANDER**

Scott McMahan

www.art-dept.com

Art Department



Scott McMahan

www.art-dept.com

Art Department



Scott McMahan

www.art-dept.com

Art Department



Scott McMahan

www.art-dept.com

Art Department



Scott McMahan

www.art-dept.com

Art Department



Blazer by **TALLIA ORANGE**
Shirt by **SACAI**
Leather trousers by **LINDER**

Alexey Galetskiy Productions
Model: Inde Mace at Wilhelmina
Grooming by Scott McMahan at Kate
Ryan inc. using Tom Ford Men
Set design by Ryan Fahey at AGPNYC
Photo Assistant: Alvin Wong

Scott McMahan

www.art-dept.com

Art Department



Scott McMahan

www.art-dept.com

Art Department



Scott McMahan

www.art-dept.com

Art Department



Scott McMahan

www.art-dept.com

Art Department



Scott McMahan

www.art-dept.com

Art Department



Scott McMahan

www.art-dept.com

Art Department



Scott McMahan

www.art-dept.com

Art Department



Scott McMahan

www.art-dept.com

Art Department



Scott McMahan

www.art-dept.com

Art Department



Scott McMahan

www.art-dept.com

Art Department

ПАЛЬТО ИЗ ШЕРСТИ
И ХЛОПКА, КОЖАНАЯ
КУРТКА, ВСЕ SALVATORE
FERRAGAMO, КАРДИГАН
ИЗ КАШЕМИРА И ХЛОПКА,
ФУТБОЛКА ИЗ ВИСКОЗЫ,
ВСЕ GIORGIO ARMANI,
СПОРТИВНЫЕ БЕРУШИ
ИЗ ХЛОПКА, КОЖАНЫЕ
КРОССОВКИ, ВСЕ BERLUTI.

Хозяин положения

НАРЯЖАТЬСЯ ТОЛЬКО ПО ПРАЗДНИКАМ И ОСОБЫМ СЛУЧАЯМ – НЕВЕРНЫЙ ПОДХОД.
ДАЖЕ ПРОГУЛКА С ЛЮБИМЫМ ПСОМ ЗАСЛУЖИВАЕТ ТОГО, ЧТОБЫ ВЫЙТИ
НА УЛИЦУ В ВЕЩАХ ИЗ ПОСЛЕДНИХ КОЛЛЕКЦИЙ.

ФОТО: MICHAEL SCHWARTZ СТИЛЬ: MARK HOLMES

152 **QQ** МАРТ 2018

2018 МАРТ **QQ** 153

Scott McMahan

www.art-dept.com

Art Department



НЕЙЛОНОВАЯ КУРТКА,
СВИТШОТ ИЗ ХЛОПКА
С ДЕТАЛЯМИ ИЗ НЕЙЛОНА,
ХЛОПКОВОЕ ХУДИ
С ДЕТАЛЯМИ ИЗ НЕЙЛОНА,
ВСЕ MONCLER.

Scott McMahan

www.art-dept.com

Art Department



ТРЕНЧ ИЗ ВОЕННОГО
ХЛОПКА, ШЕРСТЯНАЯ
ВОДОЛАСКА, БУЖИМ
ИЗ ШЕРСТИ, ВСЕ БУССИ
ИЗ ШЕРСТИ, ВСЕ БУССИ
COMMON PROJECTS

2018 MARCH 00 161

Scott McMahan

www.art-dept.com

Art Department



Scott McMahan

www.art-dept.com

Art Department



Scott McMahan

www.art-dept.com

Art Department

ТРЕНЧ ИЗ ШЕРСТИ
И ХЛОПКА, ФУТБОЛКА
ИЗ ЛЬНА И ХЛОПКА,
БРЮКИ ИЗ ШЕРСТИ
И ХЛОПКА, КОЖАНЫЙ
РЕМЕНЬ, ВСЕ MICHAEL
KORS; РУБАШКА ИЗ
ВИСКОЗЫ И НЕЙЛОНА,
BERLUTI.



МОДЕЛЬ: SEAN O'PRY@VNY MODELS
ГРУМИНГ: SCOTT MCMAHAN@KATE RYAN INC
КАСТИНГ: CHRISTIAN MESHESHA@X2
PRODUCTION
ТЕХНИЧЕСКОЕ ОБЕСПЕЧЕНИЕ: DAN ATTEO
ДОСИТТЕР: NATALIA JHETE
АССИСТЕНТЫ ФОТОГРАФА:
FLETCHER ANSTIS, NATHAN CLUSS
АССИСТЕНТ СТИЛИСТА: MARISA ELLISON
ПРОДЮСЕР: KALINA KRABEL@A+ PRODUCTIONS

Scott McMahan

www.art-dept.com

Art Department



Scott McMahan

www.art-dept.com

Art Department



Scott McMahan

www.art-dept.com

Art Department



Scott McMahan

www.art-dept.com

Art Department



Scott McMahan

www.art-dept.com

Art Department



Scott McMahan

www.art-dept.com

Art Department



Scott McMahan

www.art-dept.com

Art Department



Scott McMahan

www.art-dept.com

Art Department



Scott McMahan

www.art-dept.com

Art Department



Scott McMahan

www.art-dept.com

Art Department



Scott McMahan

www.art-dept.com

Art Department



Scott McMahan

www.art-dept.com

Art Department



Scott McMahan

www.art-dept.com

Art Department



Scott McMahan

www.art-dept.com

Art Department



Scott McMahan

www.art-dept.com

Art Department



Scott McMahan

www.art-dept.com

Art Department



Scott McMahan

www.art-dept.com

Art Department



Scott McMahan

www.art-dept.com

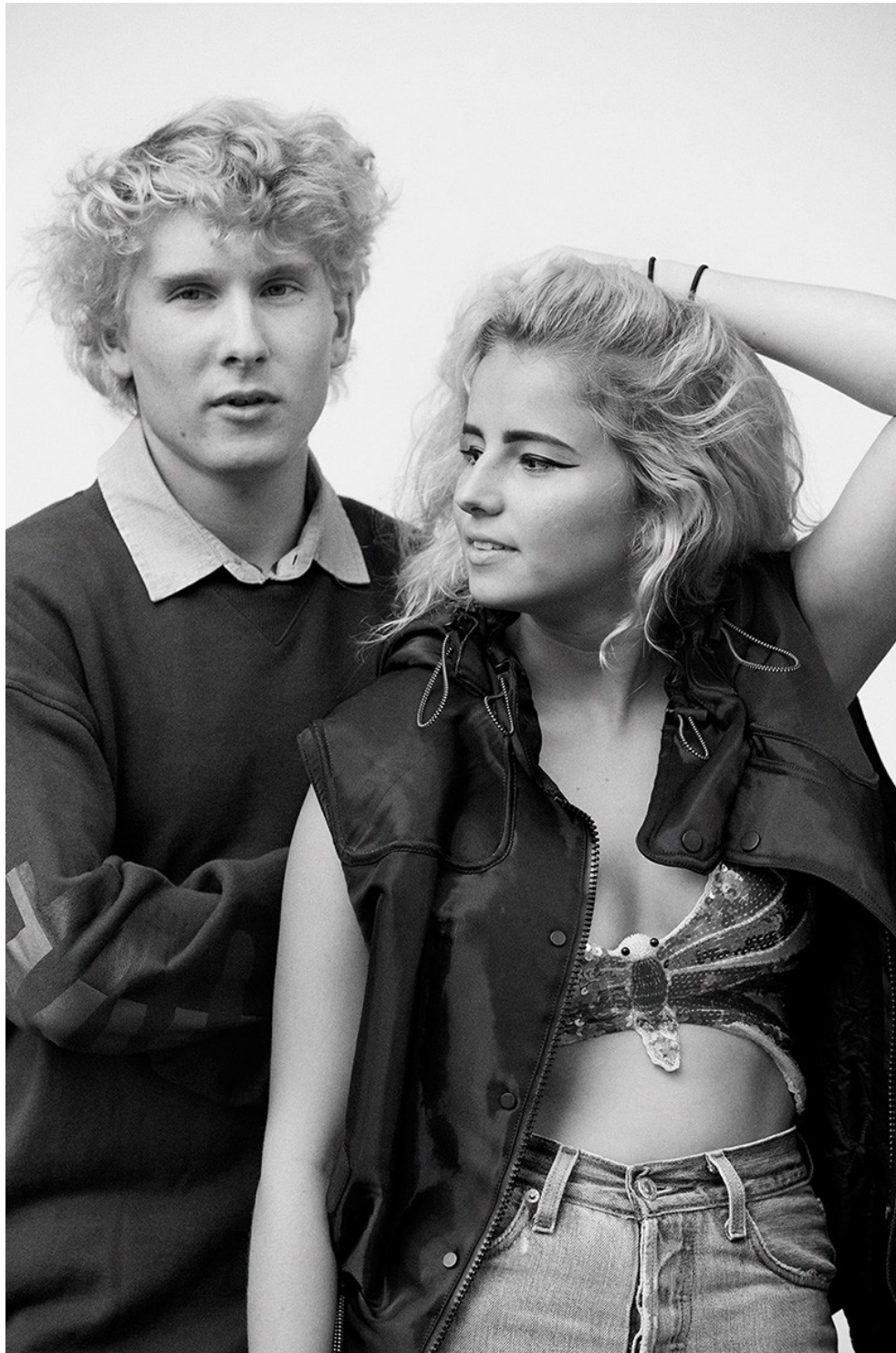
Art Department



Scott McMahan

www.art-dept.com

Art Department



Scott McMahan

www.art-dept.com

Art Department



Scott McMahan

www.art-dept.com

Art Department



Scott McMahan

www.art-dept.com

Art Department



Scott McMahan

www.art-dept.com

Art Department



Scott McMahan

www.art-dept.com

Art Department



Scott McMahan

www.art-dept.com

Art Department



Scott McMahan

www.art-dept.com

Art Department



Scott McMahan

www.art-dept.com

Art Department



Scott McMahan

www.art-dept.com

Art Department



Scott McMahan

www.art-dept.com

Art Department



Scott McMahan

www.art-dept.com

Art Department



Scott McMahan

www.art-dept.com

Art Department



Scott McMahan

Art Department



Scott McMahan

www.art-dept.com

Art Department



Scott McMahan

www.art-dept.com

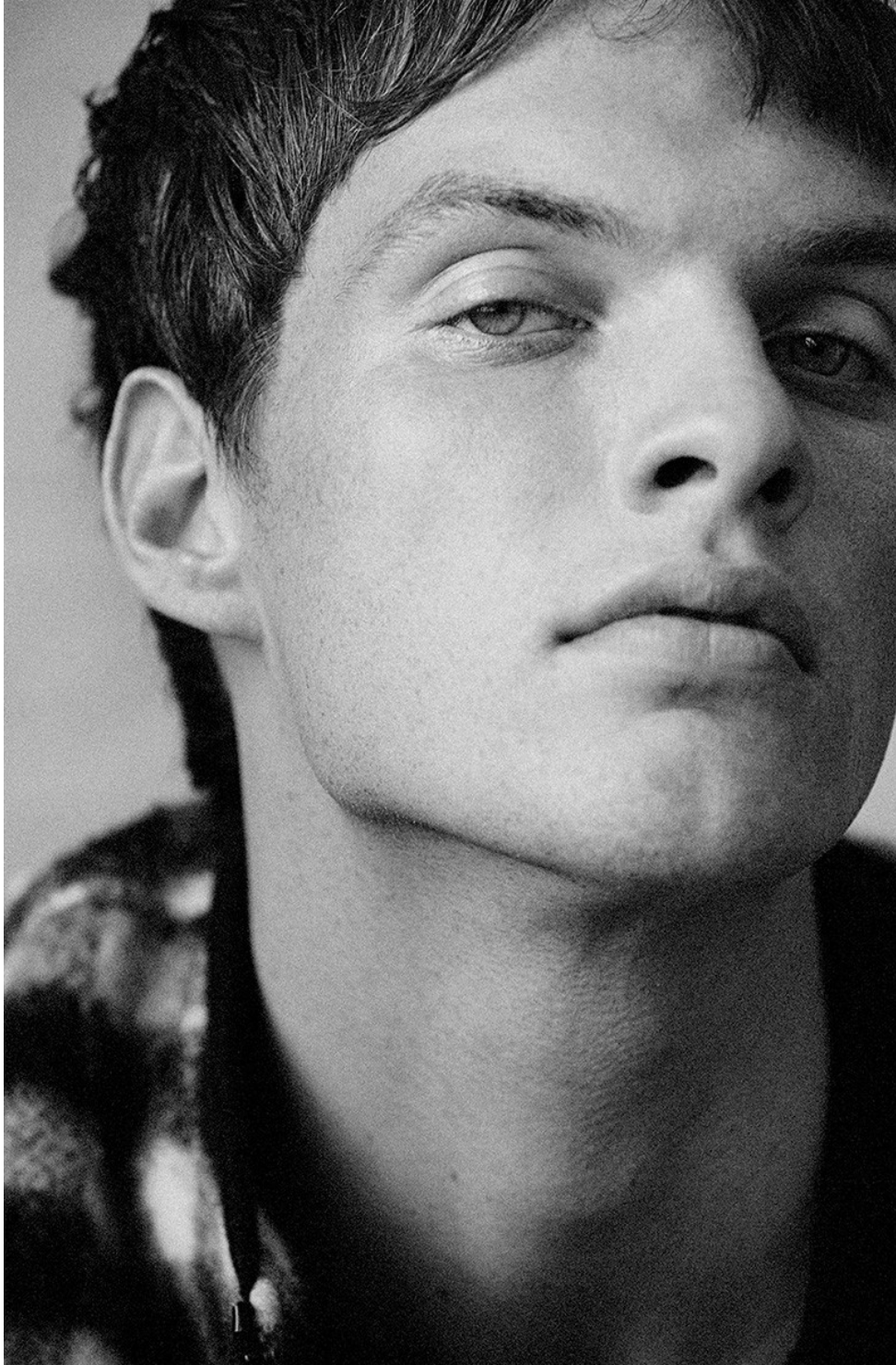
Art Department



Scott McMahan

www.art-dept.com

Art Department



Scott McMahan

www.art-dept.com

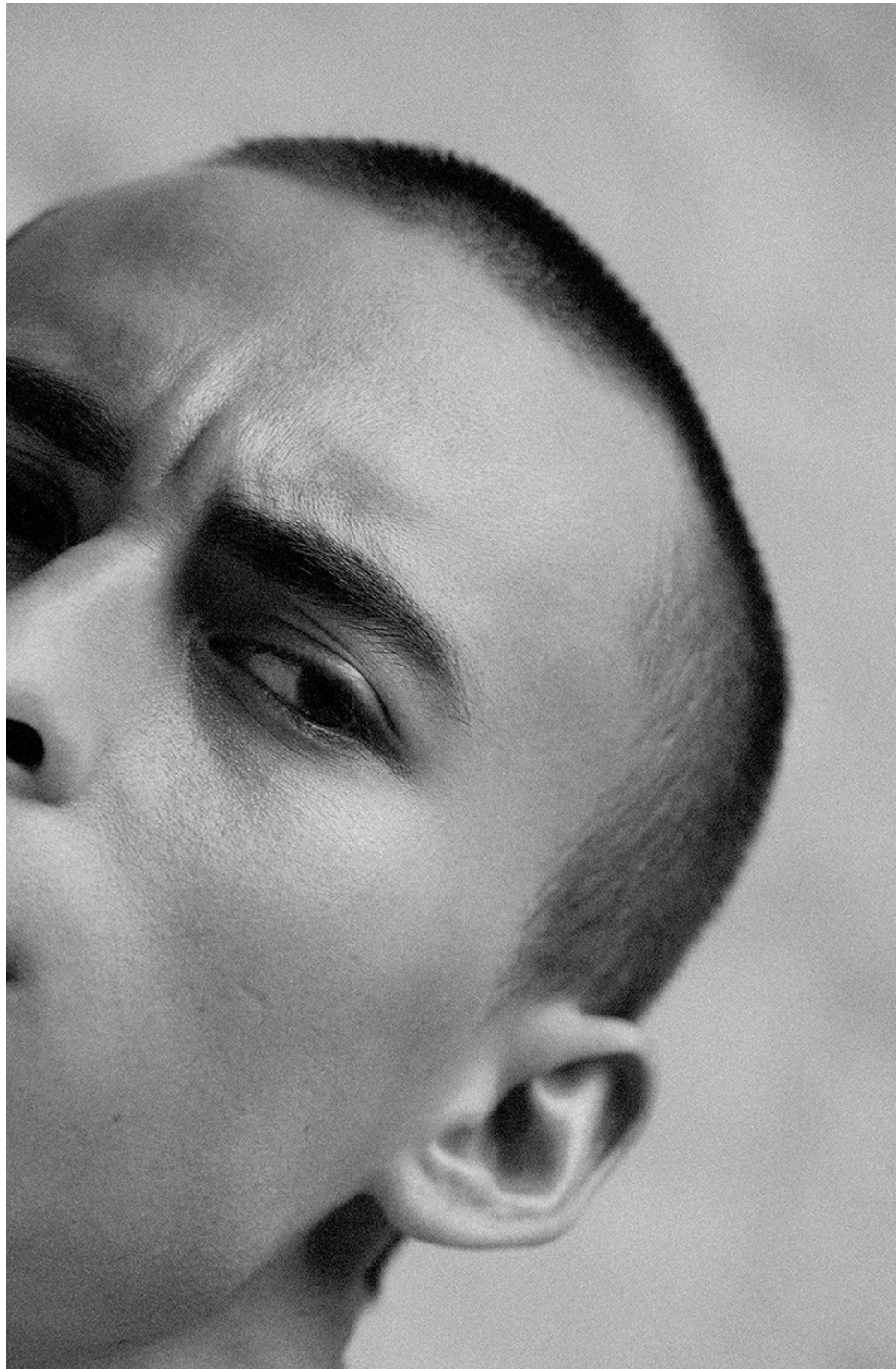
Art Department



Scott McMahan

www.art-dept.com

Art Department



Scott McMahan

www.art-dept.com

Art Department



Scott McMahan

www.art-dept.com

Art Department



Scott McMahan

www.art-dept.com

Art Department



Scott McMahan

www.art-dept.com

Art Department



Scott McMahan

www.art-dept.com

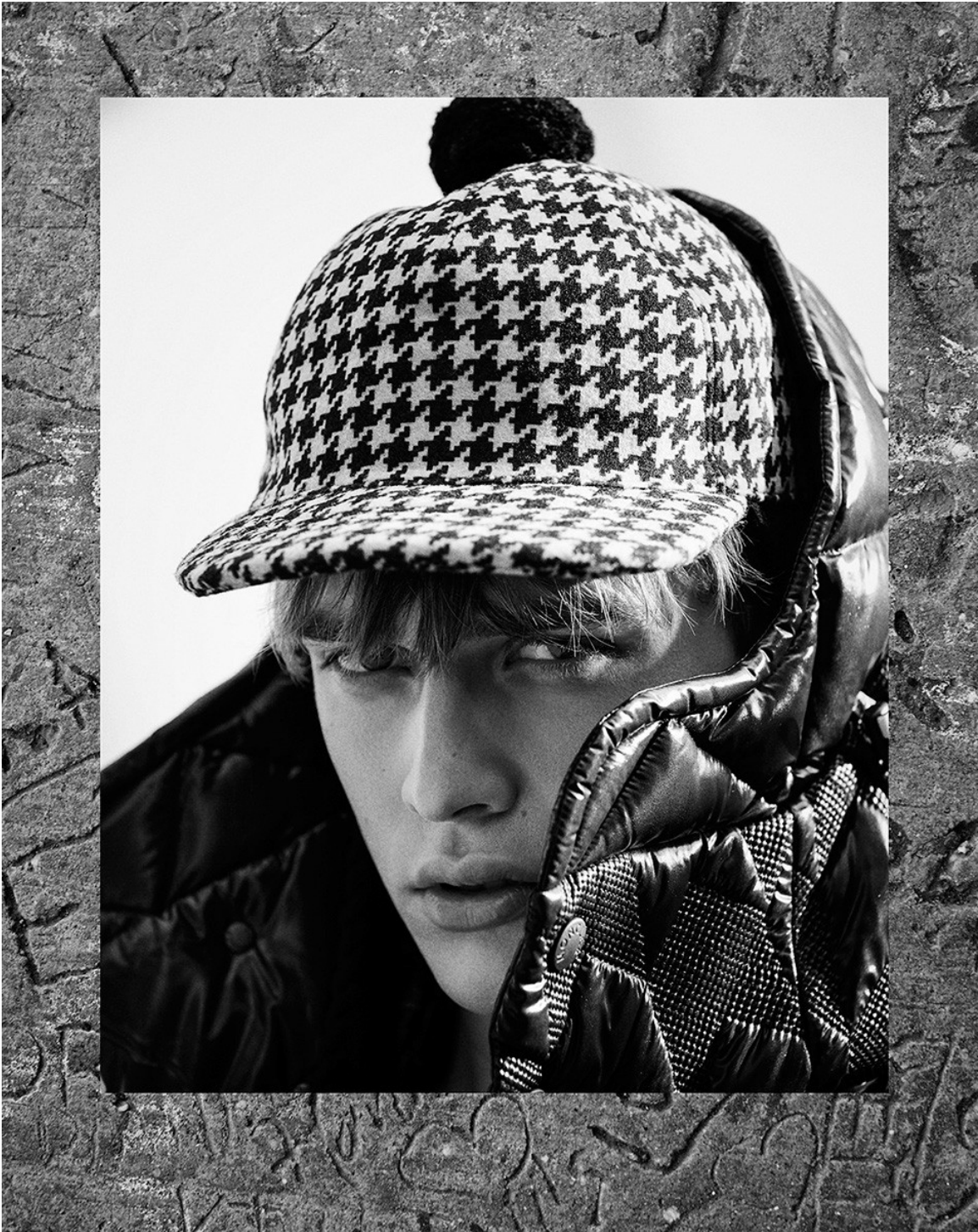
Art Department



Scott McMahan

www.art-dept.com

Art Department



Scott McMahan

www.art-dept.com

Art Department



Scott McMahan

www.art-dept.com

Art Department



Scott McMahan

www.art-dept.com

Art Department



Scott McMahan

www.art-dept.com

Art Department



Scott McMahan

www.art-dept.com

Art Department



Scott McMahan

www.art-dept.com

Art Department



Scott McMahan

www.art-dept.com

Art Department



Scott McMahan

www.art-dept.com

Art Department



Scott McMahan

www.art-dept.com

Art Department



Scott McMahan

www.art-dept.com

Art Department



Scott McMahan

www.art-dept.com

Art Department

PHOTOGRAPHED EXCLUSIVELY FOR PULSE
ON LOCATION AT RED HOOK LABS IN BROOKLYN
GROOMER: SCOTT McMAHAN
V-ROD MUSCLE 2016 PROVIDED BY
HARLEY-DAVIDSON OF NEW YORK CITY



Scott McMahan

www.art-dept.com

Art Department



Scott McMahan

www.art-dept.com

Art Department



Scott McMahan

www.art-dept.com

Art Department



Scott McMahan

www.art-dept.com

Art Department



Scott McMahan

www.art-dept.com

Art Department



Scott McMahan

www.art-dept.com

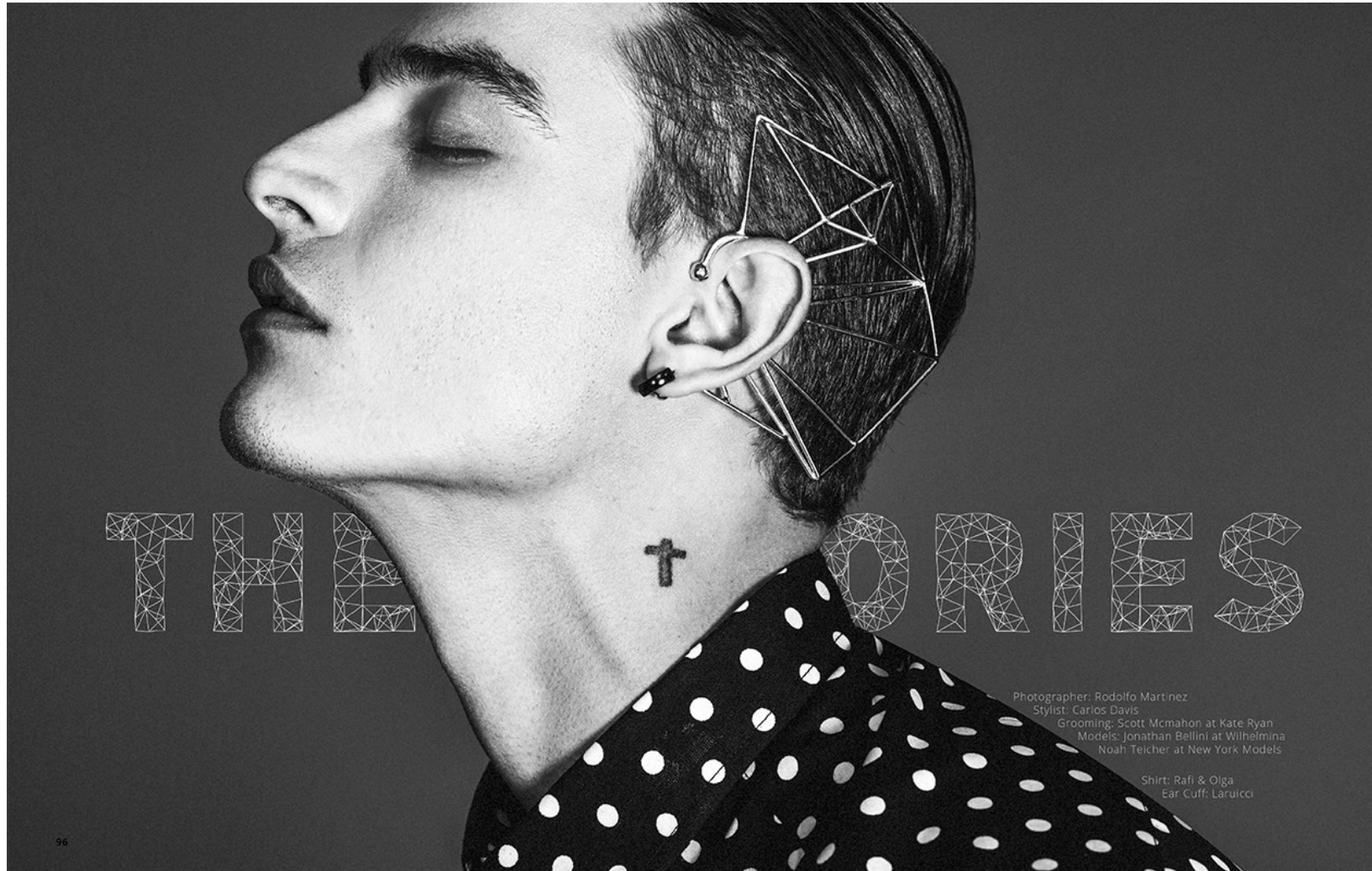
Art Department



Scott McMahan

www.art-dept.com

Art Department



Scott McMahan

www.art-dept.com

Art Department



Scott McMahan

www.art-dept.com

Art Department



Scott McMahan

www.art-dept.com

Art Department



Scott McMahan

www.art-dept.com

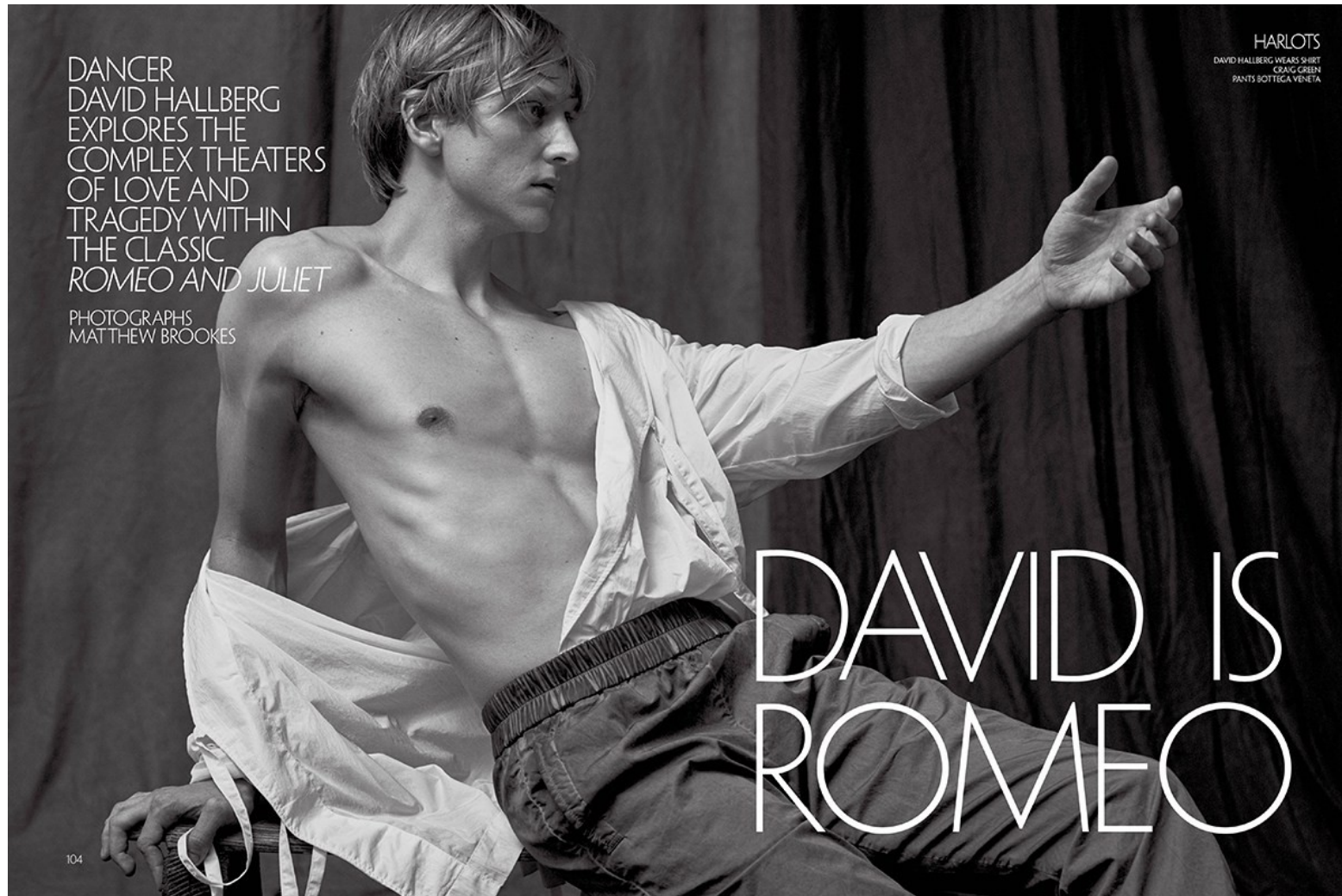
Art Department



Scott McMahan

www.art-dept.com

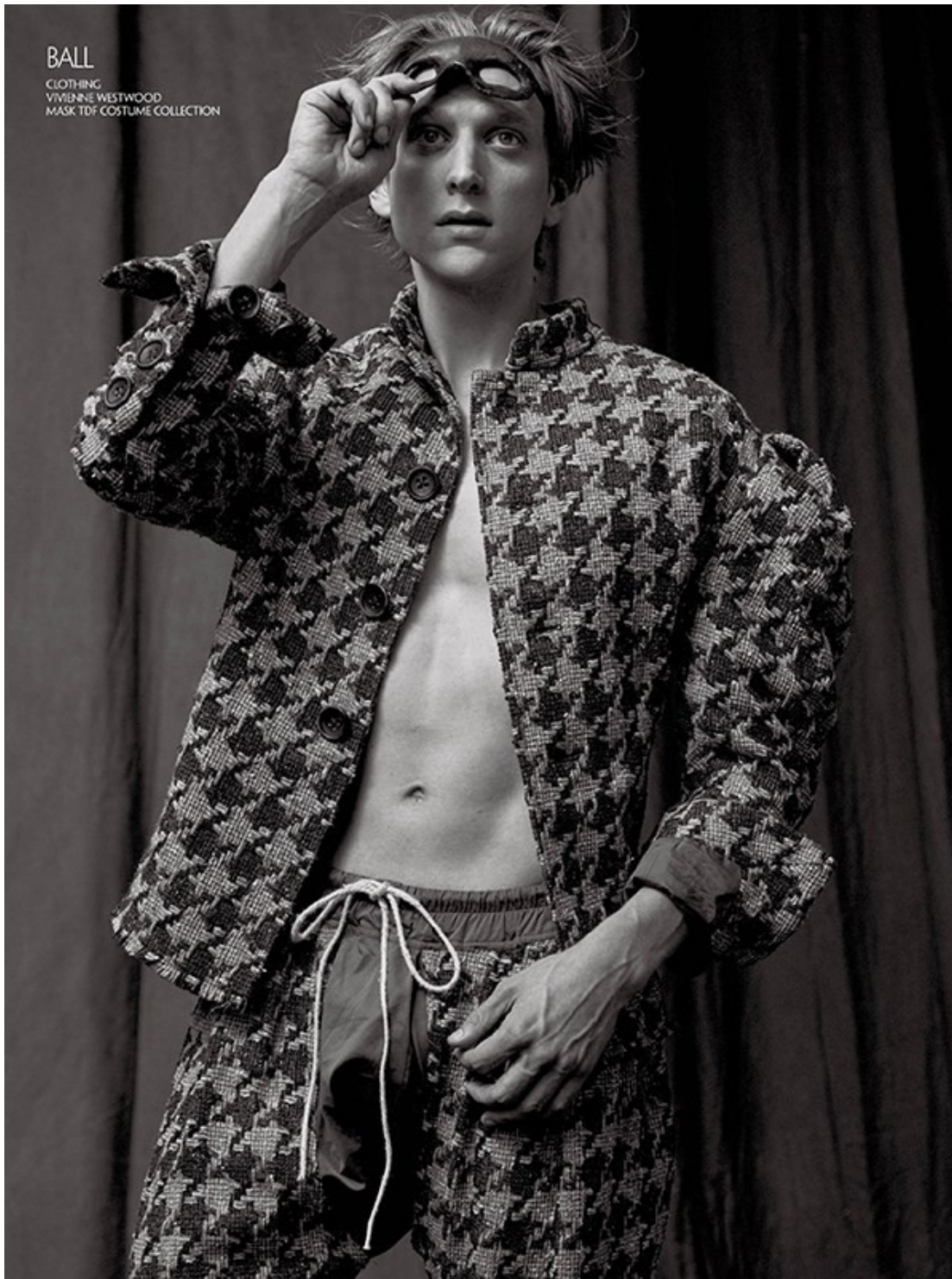
Art Department



Scott McMahan

www.art-dept.com

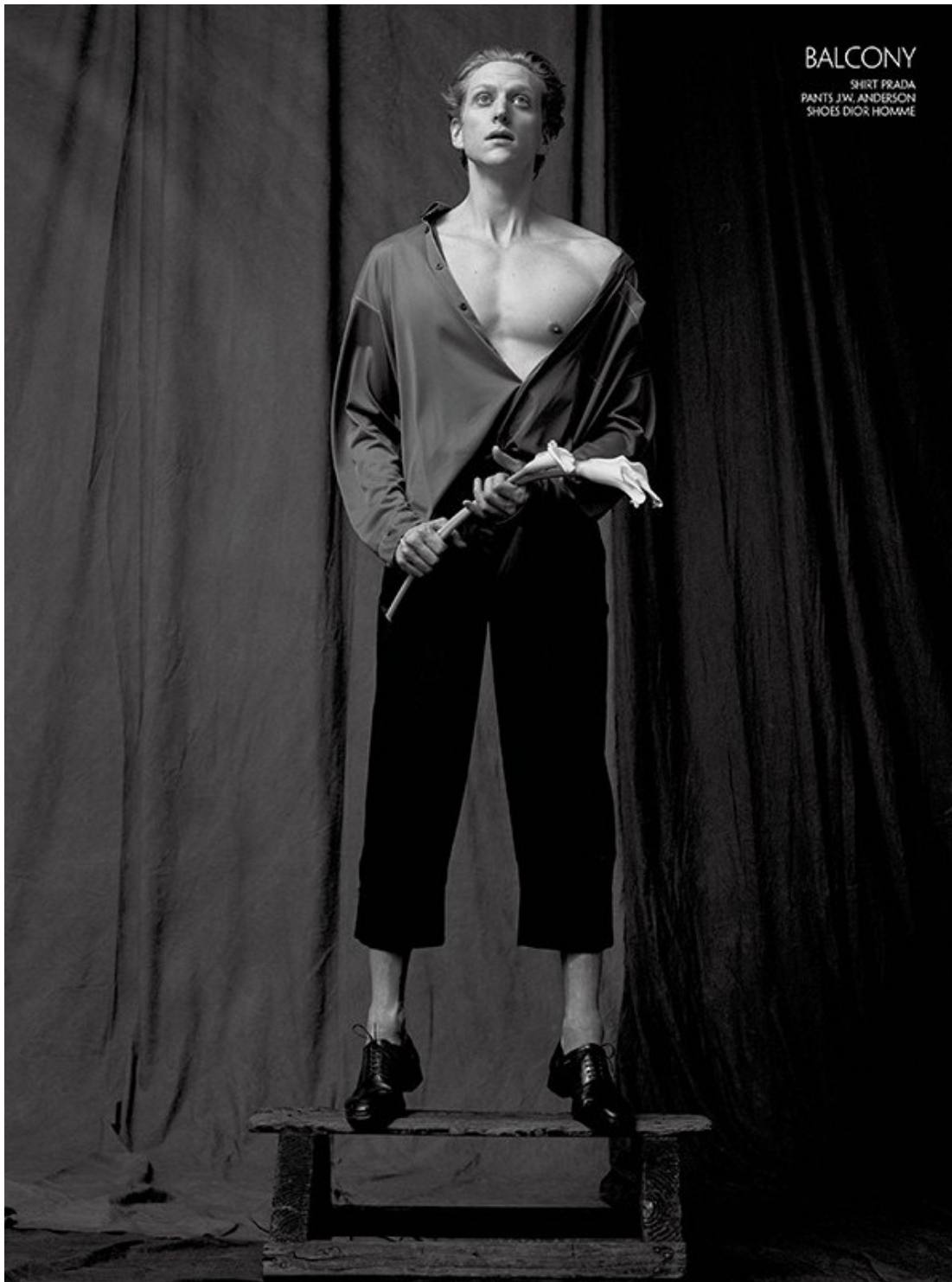
Art Department



Scott McMahan

www.art-dept.com

Art Department



BALCONY
SHIRT PRADA
PANTS J.W. ANDERSON
SHOES DIOR HOMME

Scott McMahan

www.art-dept.com

Art Department



DEATH
PANTS CRAIG GREEN
HAIR JOHNNY CARUSO
GROOMING SCOTT McMAHAN
FOR TOM FORD BEAUTY
SET DESIGN
MARY HOWARD STUDIO

Scott McMahan

www.art-dept.com

Art Department



Scott McMahan

www.art-dept.com

Art Department



Scott McMahan

www.art-dept.com

Art Department



Scott McMahan

www.art-dept.com

Art Department



Phillip Coat Dior Homme Chris Jacket 3.1 Phillip Lim Jeans Black Denim Scarf Bottega Veneta Andre Jacket McQ By Alexander McQueen Opposite Page Blazer Bottega Veneta Shirt Alexander Wang Skirt Erro Boots Frye

Scott McMahan

www.art-dept.com

Art Department



Scott McMahan

www.art-dept.com

Art Department



Scott McMahan

www.art-dept.com

Art Department



Scott McMahan

www.art-dept.com

Art Department



Scott McMahan

www.art-dept.com

Art Department



Scott McMahan

www.art-dept.com

Art Department



Scott McMahan

www.art-dept.com

Art Department



Scott McMahan

www.art-dept.com

Art Department



Scott McMahan

www.art-dept.com

Art Department



Scott McMahan

www.art-dept.com

Art Department



Scott McMahan

www.art-dept.com

Art Department



Scott McMahan

www.art-dept.com

Art Department



Scott McMahan

www.art-dept.com

Art Department



*Jacket / Polo Ralph Lauren
Shirt / Dolce & Gabbana*

Scott McMahan

www.art-dept.com

Art Department



Scott McMahan

www.art-dept.com

Art Department



Scott McMahan

www.art-dept.com

Art Department



Scott McMahan

www.art-dept.com

Art Department



Scott McMahan

www.art-dept.com

Art Department



Scott McMahan

www.art-dept.com

Art Department



THE HOMECOMING

PHOTOGRAPHER *Michael Schwartz*

FASHION EDITOR *Julie Ragusa / Jed Root*

FEATURING *Matthew Terry / Ford Models*

ART DIRECTION *Sam Dwyer*

GROOMING *Scott McMahan / Kate Ryan Inc.*

PHOTOGRAPHER ASSISTANTS *Nirvana Nelson, Colby Edwards & Amanda Yates*

FASHION ASSISTANT *Gerardo Montero Correa*

PRODUCTION *Gut It Productions*

PRODUCTION ON SITE *Gracie Haney*

Special thanks to the Terry family of the city of Ocean City, New Jersey

Scott McMahan

www.art-dept.com

Art Department



Scott McMahan

www.art-dept.com

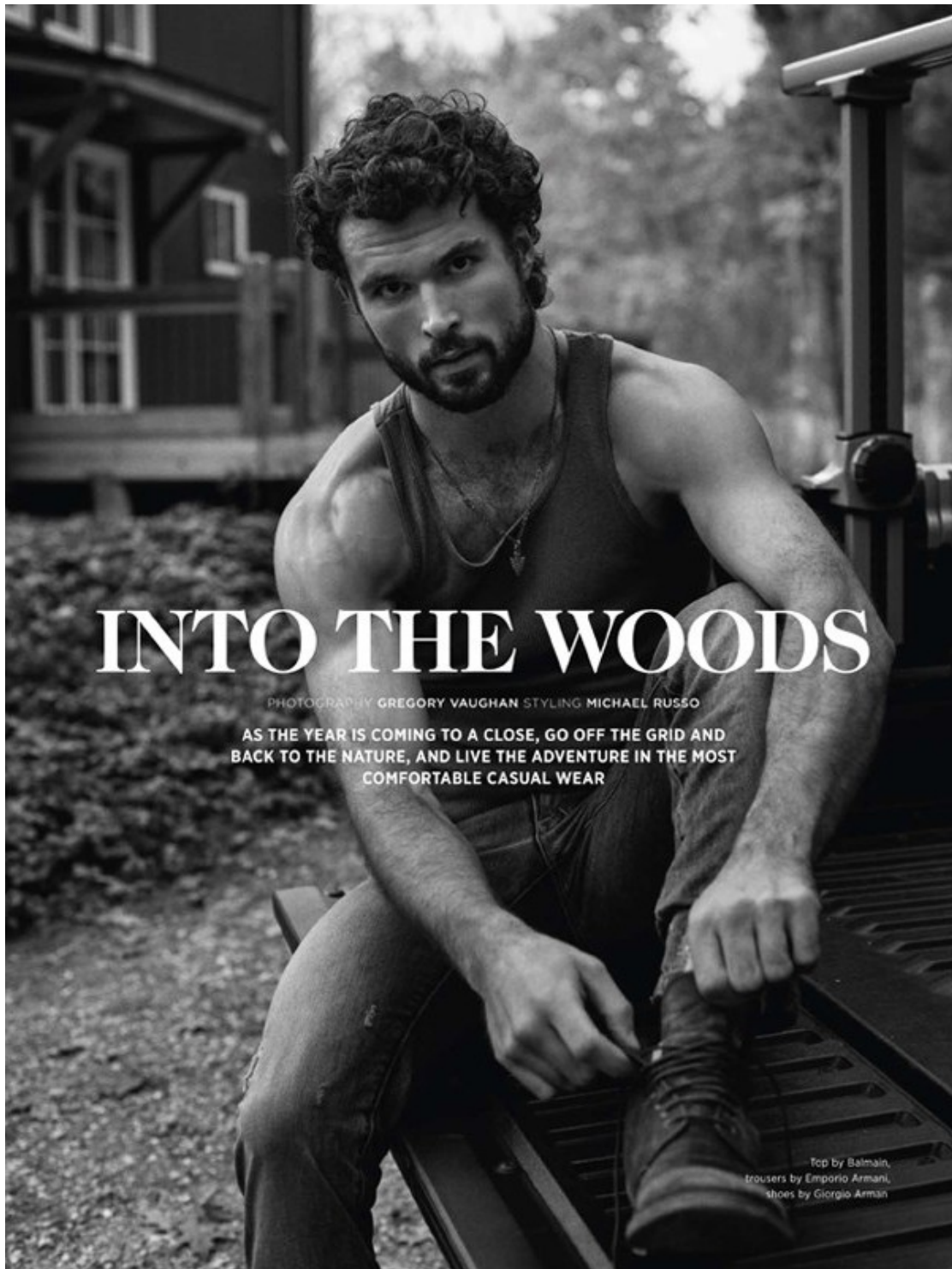
Art Department



Scott McMahan

www.art-dept.com

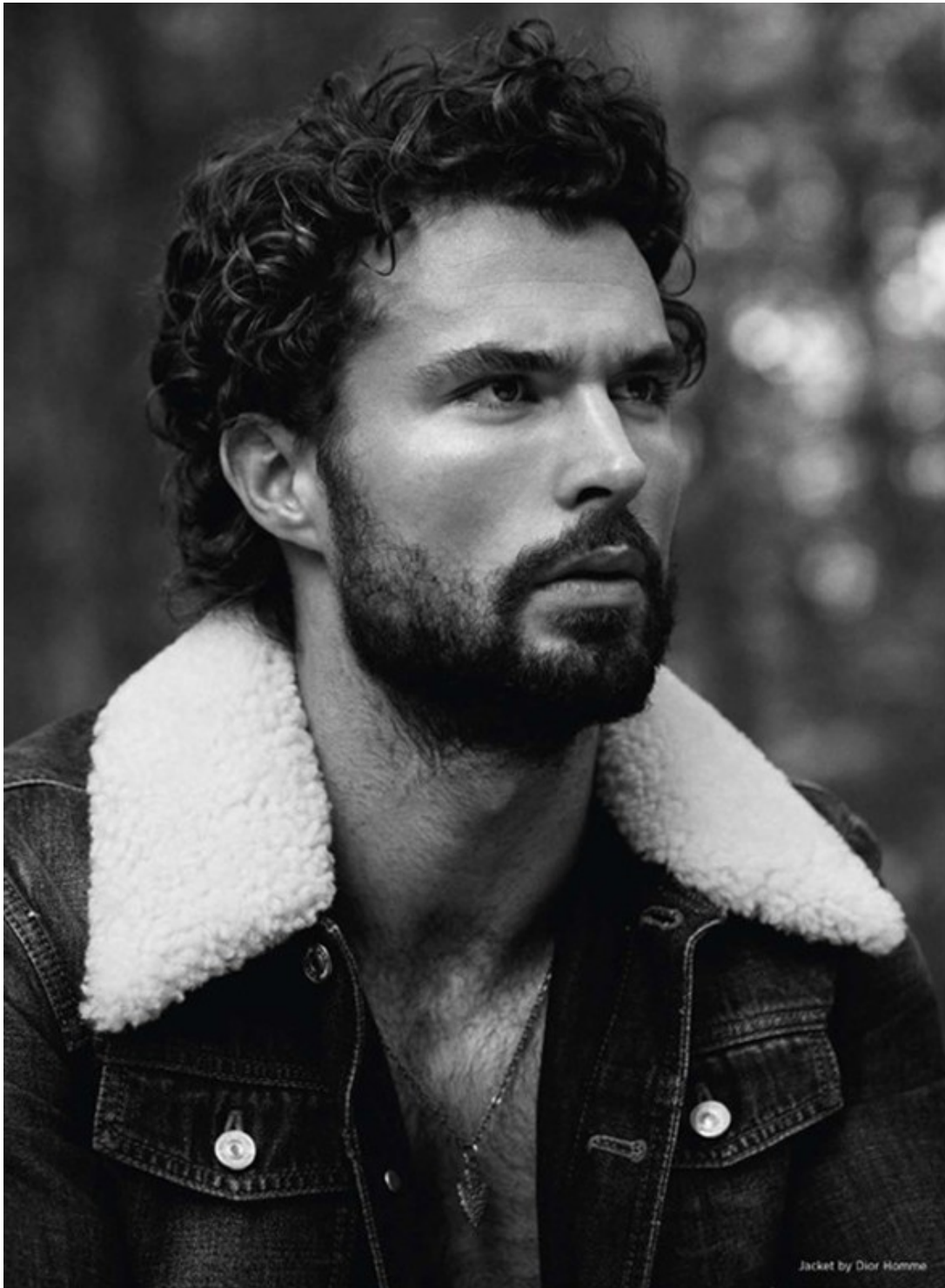
Art Department



Scott McMahan

www.art-dept.com

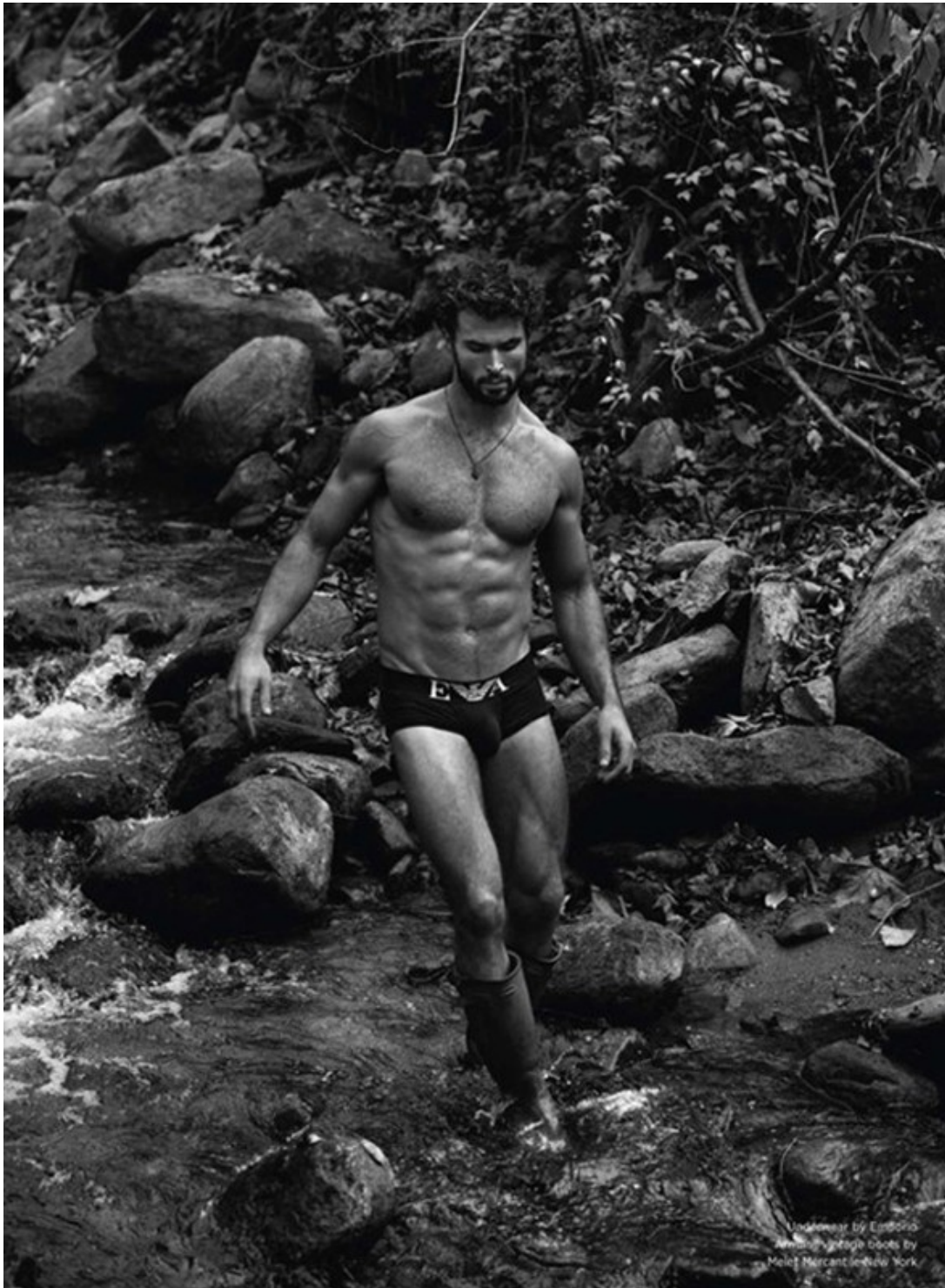
Art Department



Scott McMahan

www.art-dept.com

Art Department



Scott McMahan

www.art-dept.com

Art Department



Scott McMahan

www.art-dept.com

Art Department



Scott McMahan

www.art-dept.com

Art Department



Scott McMahan

www.art-dept.com

Art Department



Scott McMahan

www.art-dept.com

Art Department



Scott McMahan

www.art-dept.com

Art Department



DAVID GANDY

"THE REST OF 2014 IS AGAIN GOING TO BE TREMENDOUSLY BUSY. WE HAVE A RECORD NUMBER OF COVERS COMING OUT AND I HAVE THE LARGEST PROJECT OF MY CAREER COMING OUT IN SEPTEMBER, SO WE ARE GEARING UP FOR THAT AT THE MOMENT"

Jacket and shirt by
MICHAEL BASTIAN

Scott McMahan

www.art-dept.com

Art Department



Scott McMahan

www.art-dept.com

Art Department



Scott McMahan

www.art-dept.com

Art Department



Scott McMahan

www.art-dept.com

Art Department



Scott McMahan

www.art-dept.com

Art Department



Scott McMahan

www.art-dept.com

Art Department



Shirt by Martin Keehn,
sunglasses by Christian Roth

Scott McMahan

www.art-dept.com

Art Department



Scott McMahan

www.art-dept.com

Art Department



Scott McMahon

www.art-dept.com

Art Department



Scott McMahan

www.art-dept.com

Art Department



Scott McMahan

www.art-dept.com

Art Department



Scott McMahan

www.art-dept.com

Art Department



Scott McMahan

www.art-dept.com

Art Department



Intense Power

photography Arnaldo Anaya Lucca at Defacto Inc
grooming Scott McMahan at Kate Ryan Inc for Tom Ford Men
photography assistants Zack Zannini & Jordan Strong
Digital Capture Patrick Kline at Versatile Studios
All underwear Intense Power by Calvin Klein

models
Austin Scoggin, Christian Hogue, Eian Scully,
Trevor van Uden & Tyler Maher
all at Soul Artist Mgmt, New York

Scott McMahan

www.art-dept.com

Art Department



Scott McMahan

www.art-dept.com

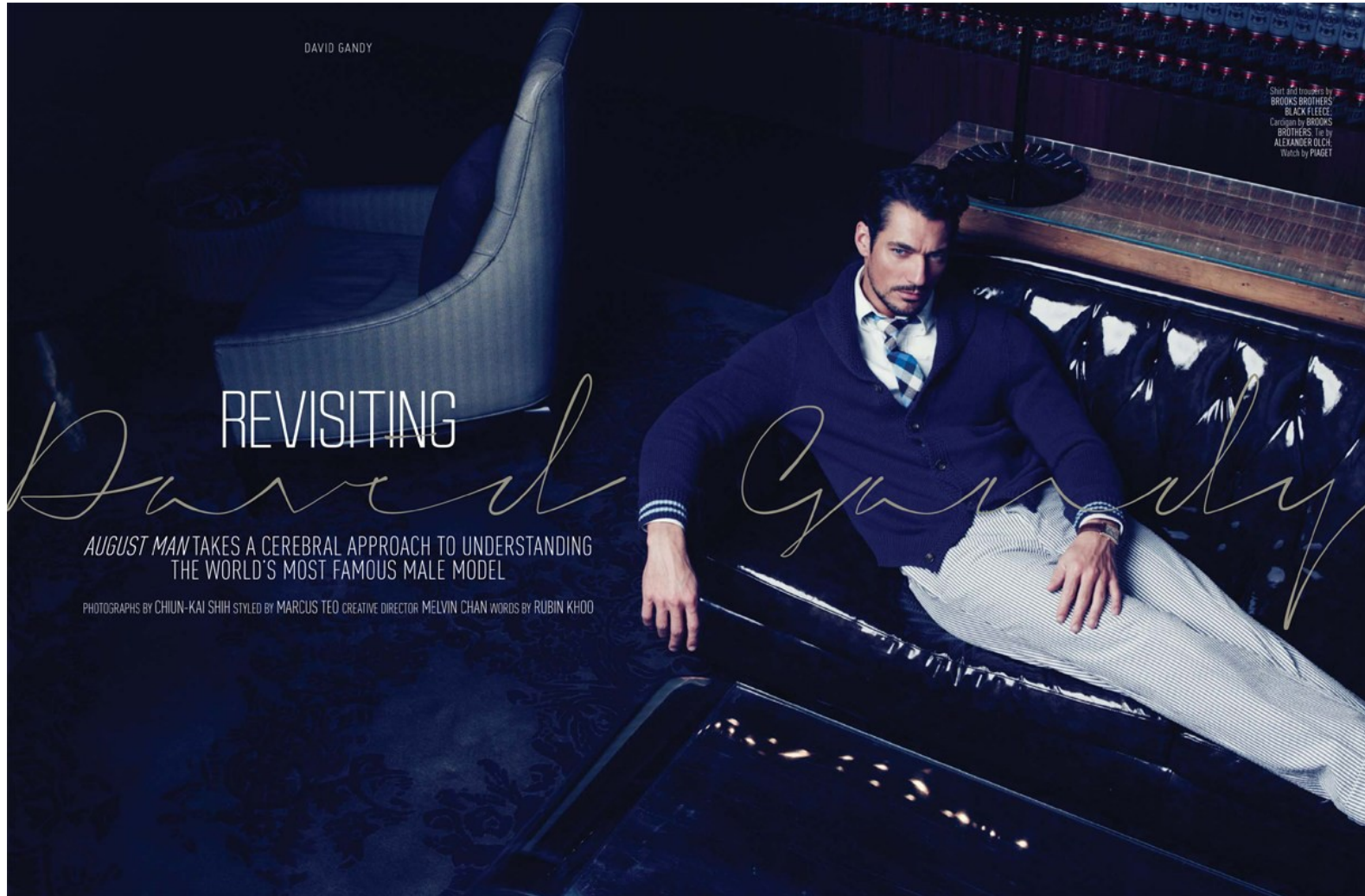
Art Department



Scott McMahan

www.art-dept.com

Art Department



Scott McMahan

www.art-dept.com

Art Department



3-piece suit and shirt by
BROOKS BROTHERS; Pocket
square by ALEXANDER
OLCH; Glasses by TVR OPT;
Watch by PANGET

Scott McMahan

www.art-dept.com

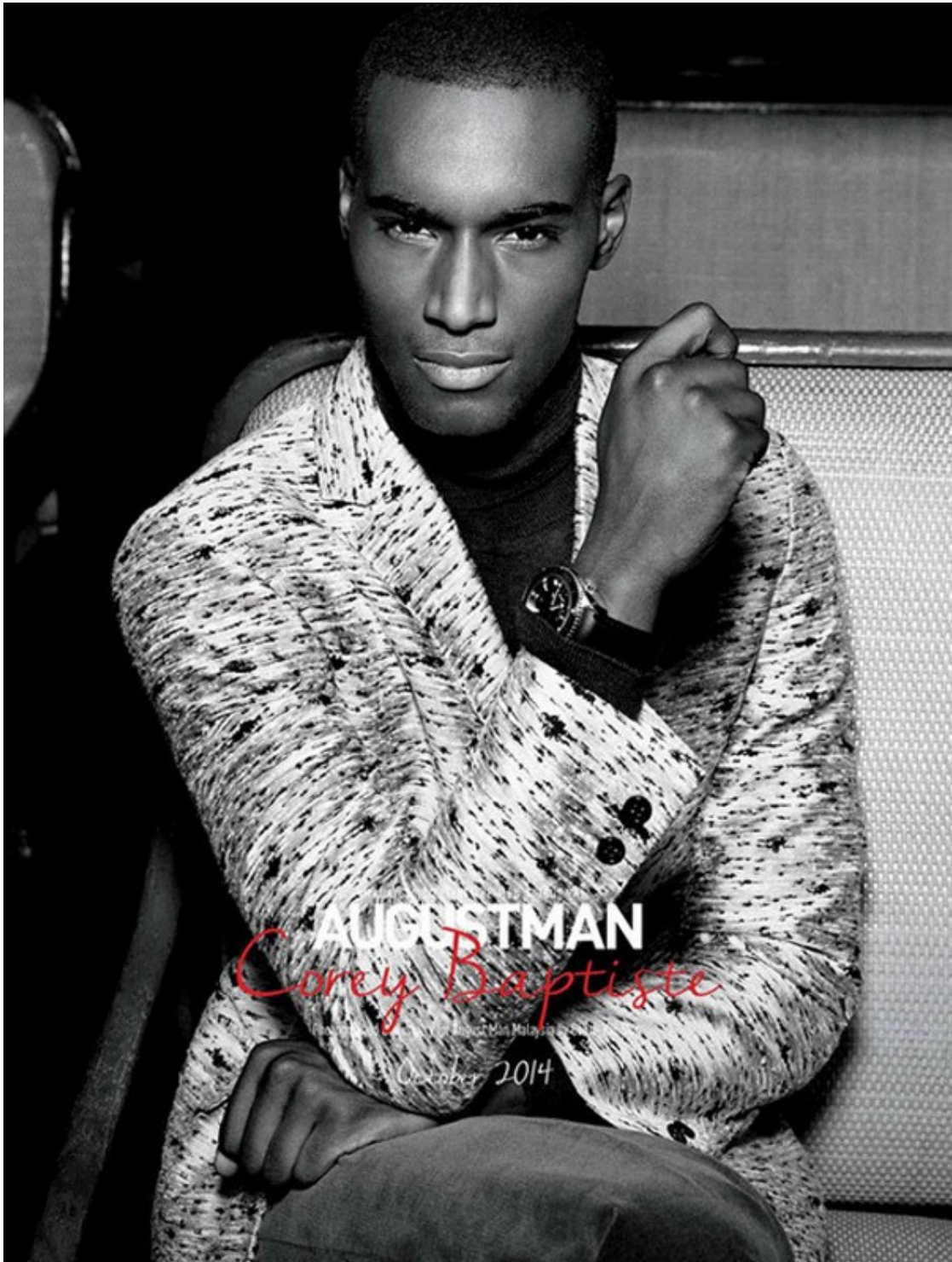
Art Department



Scott McMahan

www.art-dept.com

Art Department



Scott McMahan

www.art-dept.com

Art Department



Scott McMahan

www.art-dept.com

Art Department



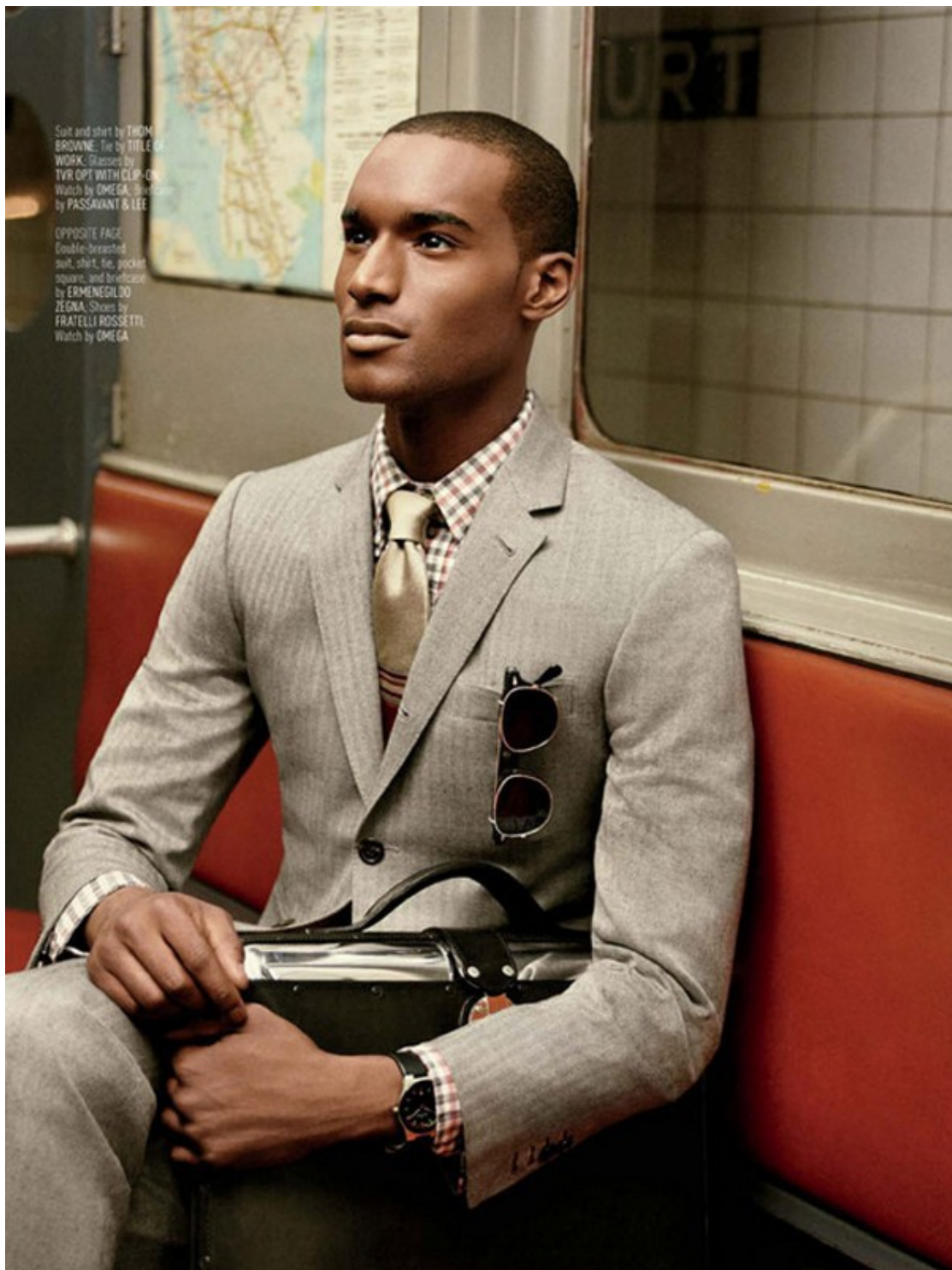
Coat, shirt, trousers and
portfolio by BURBERRY
PRORSUM. Tie by TITLE
OF WORK. Tie bar by
THE TIE BAR. Shoes by
FRATELLI ROSSETTI

OPPOSITE PAGE
Blazer, shirt and trousers
by LOUIS VUITTON. Tie
by THE TIE BAR. Bag
and pocket square by
ROBERT TALBOT.
Shoes by SANTONI
Briefcase by MCM

Scott McMahan

www.art-dept.com

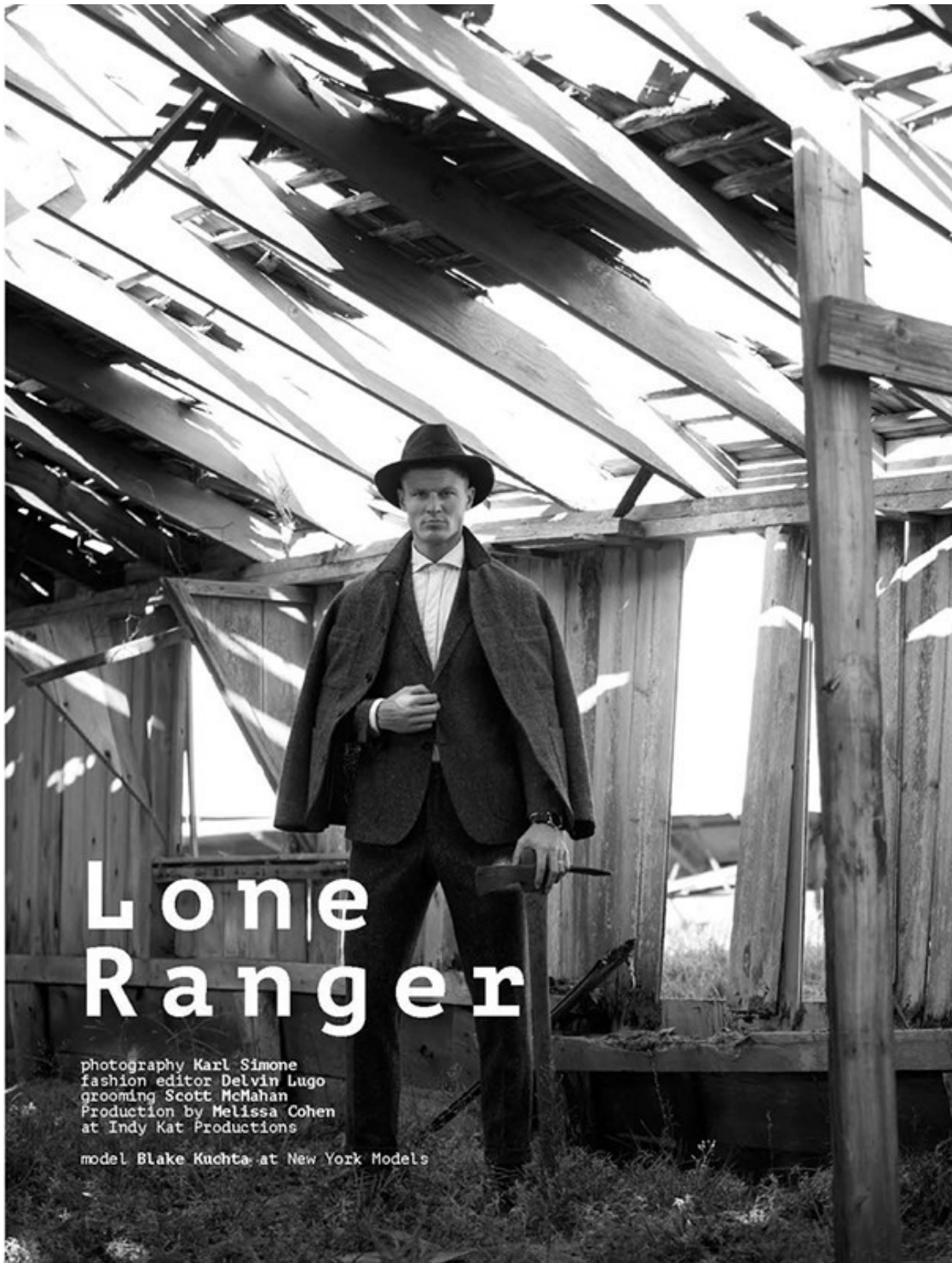
Art Department



Scott McMahan

www.art-dept.com

Art Department



Scott McMahan

www.art-dept.com

Art Department



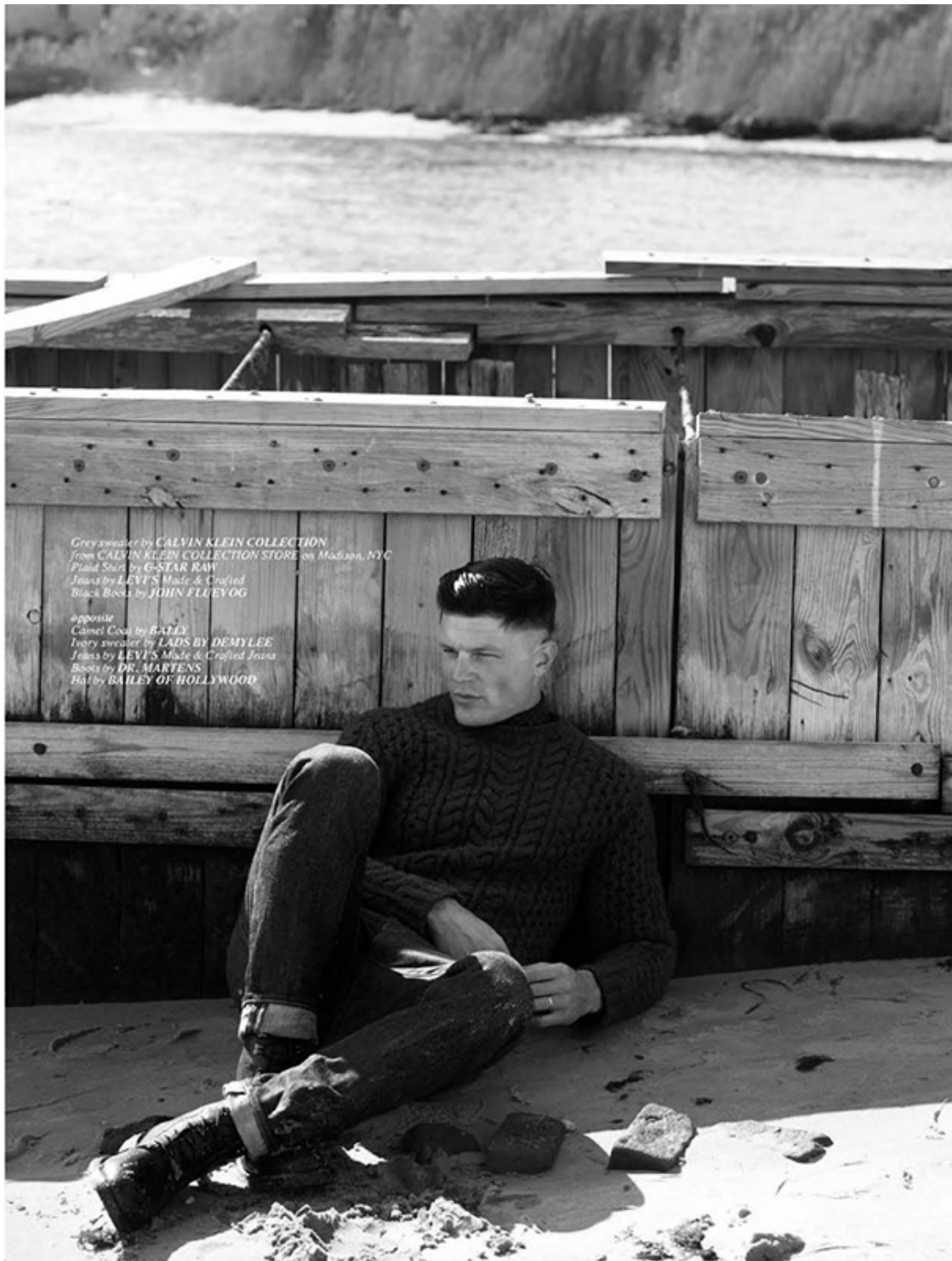
Cardigan by EMENEGILDO ZEGNA
White shirt by E. TAUTZ
Beanie hat by LADS BY DEMYLEE

opposite
sweater by PENFIELD
shirt by E. TAUTZ
Cashmere. Slim-fit pants by LADS BY DEMYLEE
Hat by EUGENIA KIM
www.Eugeniakim.com
Eyeglasses by WOLFGANG PROKSCH

Scott McMahan

www.art-dept.com

Art Department



Grey sweater by CALVIN KLEIN COLLECTION
from CALVIN KLEIN COLLECTION STORE on Madison, NYC
Plaid Shirt by G-STAR RAW
Jeans by LEVI'S Made & Crafted
Black Boots by JOHN FLEVOG

opposite
Camel Coat by BAILEY
Tweed sweater by LADS BY DEMYLEE
Jeans by LEVI'S Made & Crafted Jeans
Boots by DR. MARTENS
Hat by BAILEY OF HOLLYWOOD

Scott McMahan

www.art-dept.com

Art Department



Scott McMahan

www.art-dept.com

Art Department



Scott McMahon

www.art-dept.com

Art Department



Scott McMahan

www.art-dept.com

Art Department



Scott McMahan

www.art-dept.com

Art Department



Scott McMahan

www.art-dept.com

Art Department



Scott McMahan

www.art-dept.com

Art Department



Chris wears shirt by CK Calvin Klein. Glasses, vintage Ray-Ban from Silver Lining Opticians.
Groomer: Scott McMahan
Photo Assistants: Jamie Onderdonk, Mauricio Lopez
Styling Assistants: Staff Yulia, Adrian Manuel Barber
Model: Chris Foltz & Ford NY, Josh Ferguson
Special Thanks to Sam Doerfer, Prodi at Art & Commerce and Paul Ashley's.

Scott McMahan

www.art-dept.com

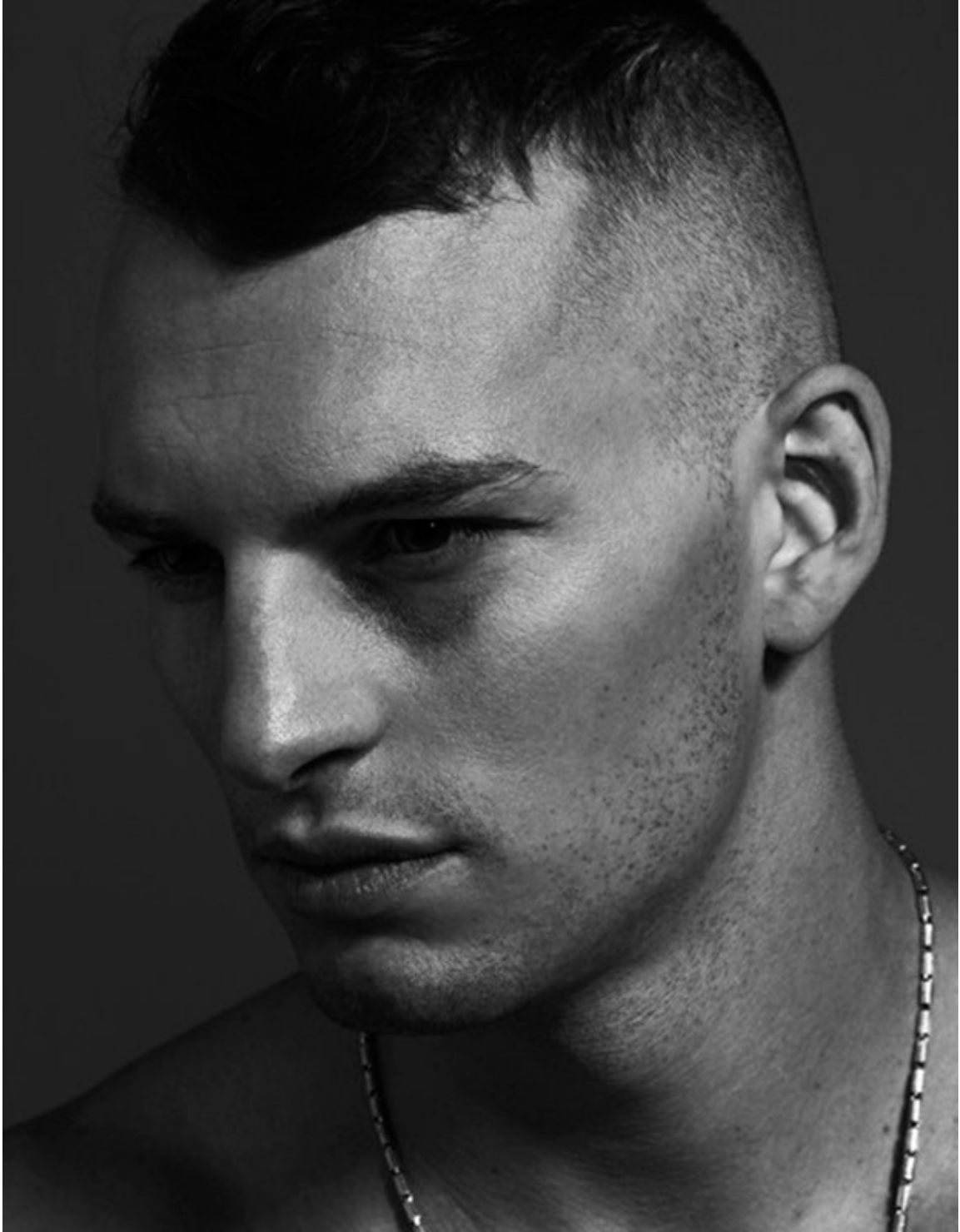
Art Department



Scott McMahan

www.art-dept.com

Art Department



Scott McMahan

www.art-dept.com

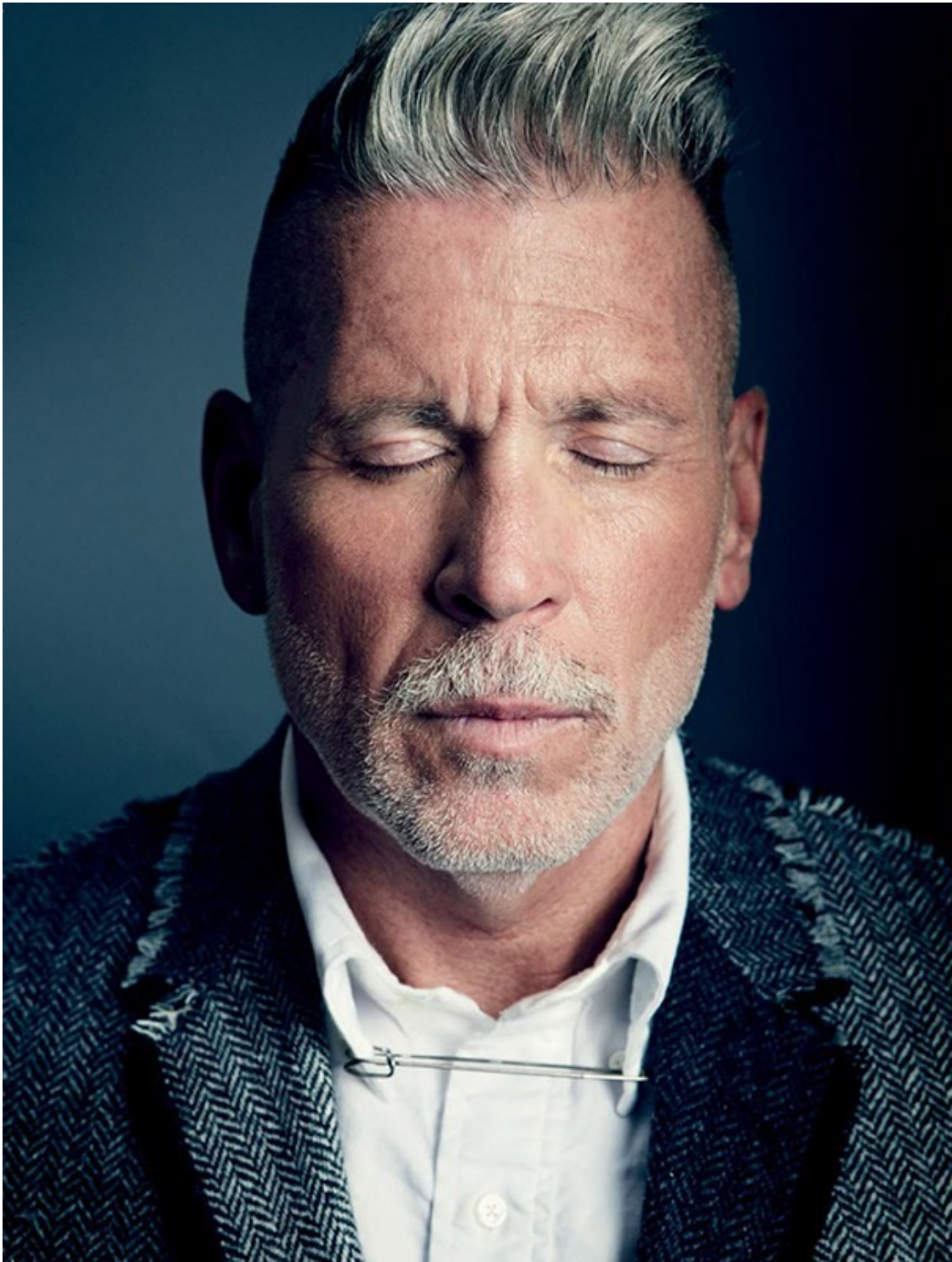
Art Department



Scott McMahan

www.art-dept.com

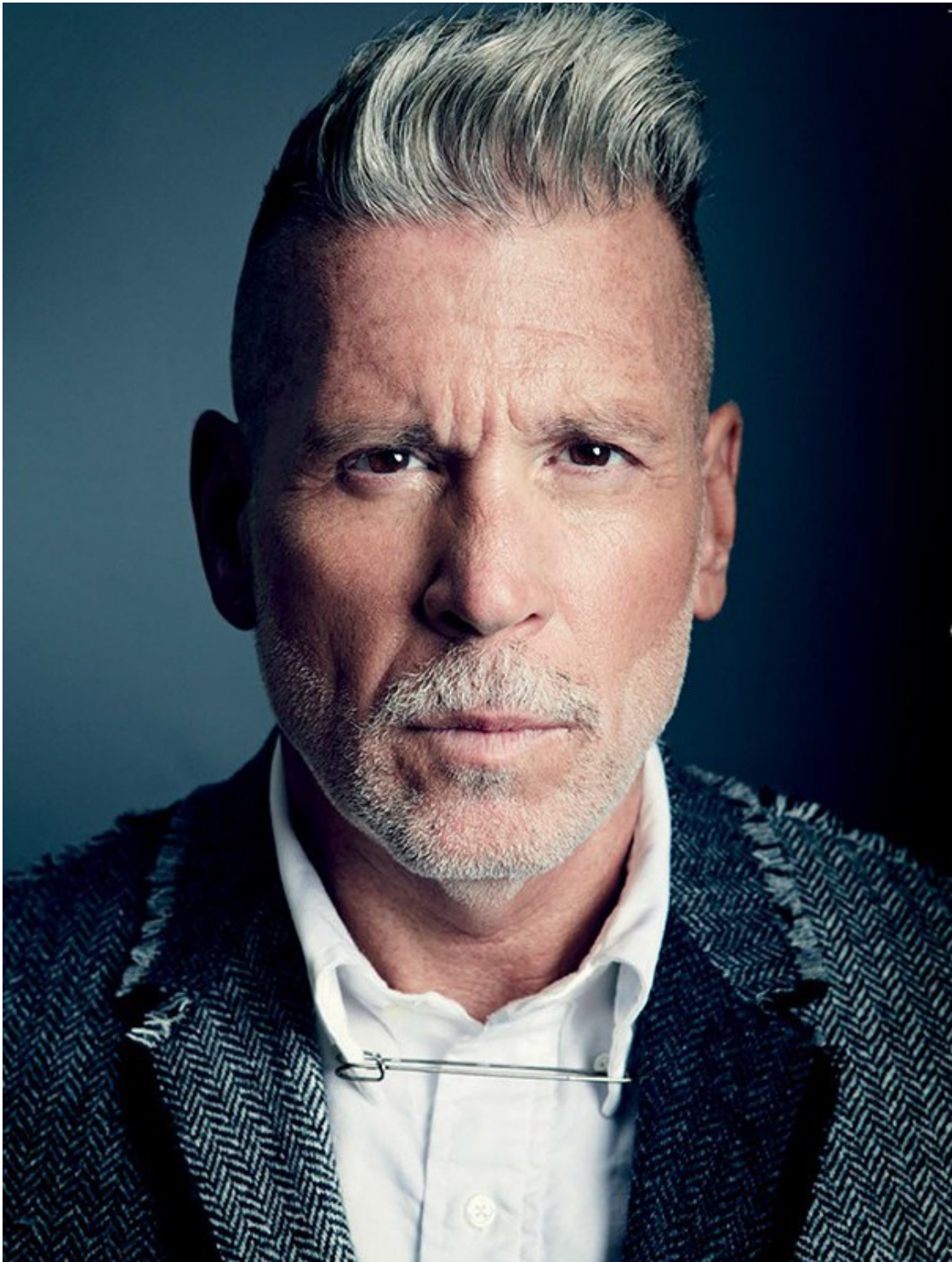
Art Department



Scott McMahan

www.art-dept.com

Art Department



Scott McMahan

www.art-dept.com

Art Department



JOSEPH COLEMAN, 47
SECOND ACT: POET; PRESIDENT OF THE FIT REPORT

Booked for his first big gig (a Guerlain ad) by photographer Peter Lindbergh after a chance meeting at a hotel, Coleman modeled for a decade before starting the Fit Report, a sizing consultant for fashion brands, in 2006. He is also a published poet, contributing works to Esquire and an upcoming edition of *The New Criterion*.

OLD RULE: NO WHITE JEANS IN WINTER.
NEW RULE: ANY COLOR JEANS WORK ANY TIME OF THE YEAR. EXCEPT YELLOW, WHICH WORK NEVER.

162 ESQUIRE • DECEMBER 2013

Scott McMahan

www.art-dept.com

Art Department



Esquire
STYLE

OLD RULE
Sweatshirts: for
the gym, the field,
or the couch.

NEW RULE
A fitted sweatshirt:
for anywhere
and with anything—
even under a suit.

WALTER SCHUPFER, 48
SECOND ACT:
AGENT AND OWNER OF WALTER SCHUPFER MANAGEMENT
Walter Schupfer's story is a cautionary tale with a happy ending: "Helmut Lang saw me in a bar in Vienna when I was fifteen. I think it was a school night." Cut to Schupfer modeling for houses like Valentino and Gaultier. And when being in front of the camera ceased to be as compelling as what was going on behind it, he called everyone he knew for advice and started Walter Schupfer Management, which has represented photographers, stylists, and set designers for nearly twenty years.

163

Scott McMahan

www.art-dept.com

Art Department



OLD RULE
NO SHINY, PUFFY,
OR BRIGHTLY
COLORED OUTER-
WEAR WITH
TAILORING.

NEW RULE
SOME HIGH-
LOW CONTRAST
WILL KNOCK THE
STUFFINESS OUT
OF YOUR SUIT.

This page: Cotton-
nylon-and-down vest
(\$225), two-button
wool suit (\$1,695),
and cotton shirt
(\$90) by Polo Ralph
Lauren; silk tie (\$215)
by Ralph Lauren Purple
Label; leather
boots (\$348) by Cole
Haan; steel Portu-
guese hand-wound
Eight Days watch
(\$10,800) by IWC.

Opposite: Leather
jacket (\$2,595) by
Belstaff; cotton shirt
(\$185) by Thomas
Pink; wool tie (\$88)
by Ernest Alexander;
titanium Speedmas-
ter watch (\$9,800)
by Omega.

KWAME DAVIS, 38
SECOND ACT: BOXER

"The main thing you work on when you're a model and a boxer is your defense," says this former Joseph Abboud and John Bartlett model, who usually trains in the gym five hours a day to maintain his five-for-five knockout record in professional fights. And there are other lessons from the runway that help the light heavyweight in the ring: "I learned charisma from modeling. I'm a showman. Plus, the more people that see you in magazines, the more people want to see you fight."

164 ESQUIRE • DECEMBER 2013

netpage Clip, Save, Share, from any page.

Scott McMahan

www.art-dept.com

Art Department

**ADAM FLAMER-
CALDERA, 26**

**SECOND ACT:
THIRD-YEAR MEDICAL
STUDENT AT COLUMBIA
UNIVERSITY**

Sure, his hundred-hour-a-week pediatric-care rotation at the Harlem Hospital Center exhausts him, but after seven years of modeling for brands like Michael Bastian and Gucci, Flamer-Caldera is "used to not sleeping." Another typical experience for the man who still models in between twelve-hour shifts: "My patients say, 'I think I recognize you from somewhere.' I tell them, 'You don't know me. I think you might be delirious from fever.'"

Esquire
STYLE

OLD
RULE

NECKTIES AND
LEATHER JACKETS DO
NOT BELONG IN THE
SAME SENTENCE, MUCH
LESS ON THE SAME
MAN AT THE SAME TIME.

NEW
RULE

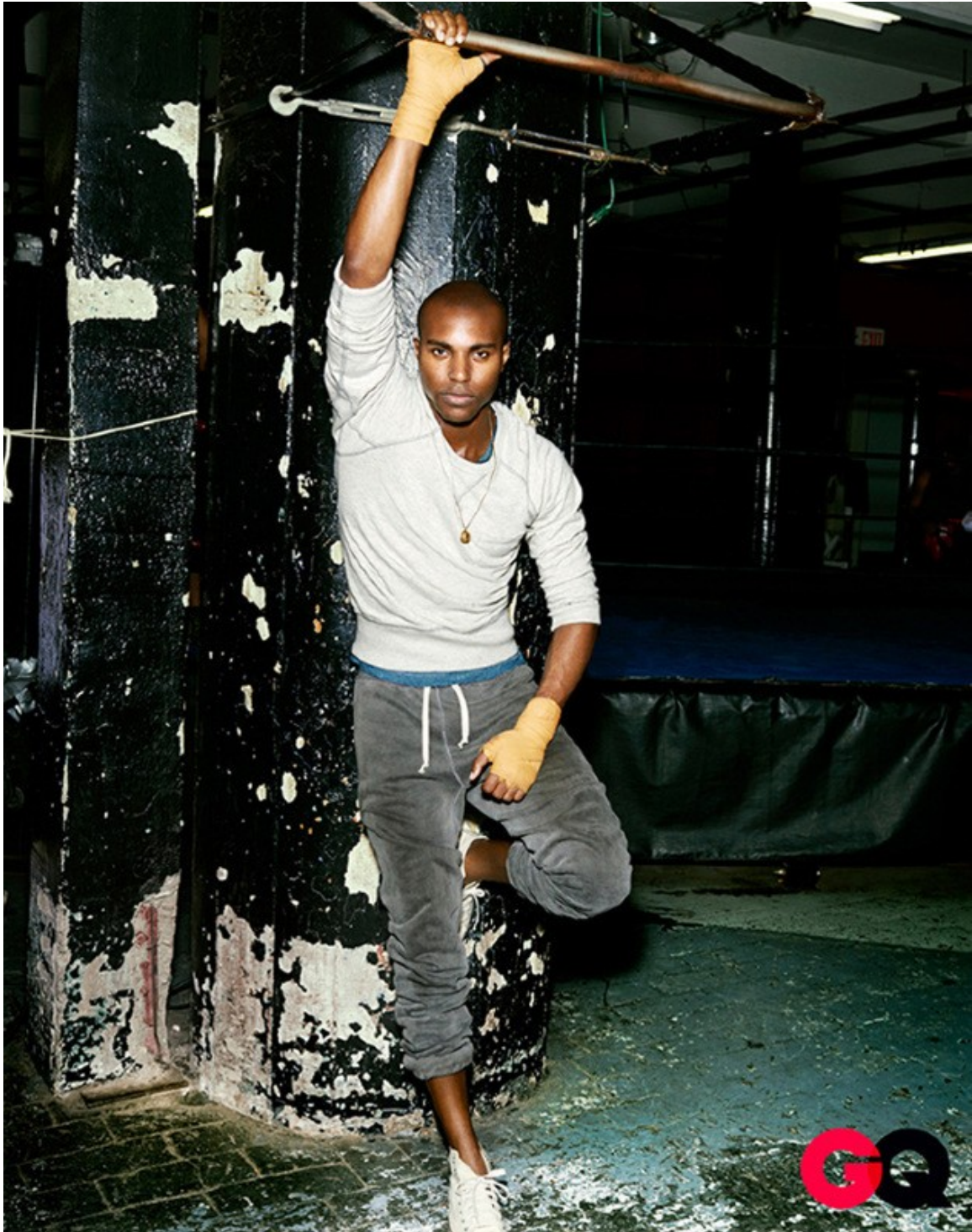
SUB OUT YOUR BLAZER
FOR A LEATHER JACKET
TO ACHIEVE THE
RIGHT AMOUNT OF EDGE.



Scott McMahan

www.art-dept.com

Art Department



Scott McMahan

www.art-dept.com

Art Department



Scott McMahon

www.art-dept.com

Art Department



Scott McMahon

www.art-dept.com

Art Department



Scott McMahan

www.art-dept.com

Art Department



Scott McMahan

www.art-dept.com

Art Department



Scott McMahan

www.art-dept.com

Art Department



Scott McMahan

www.art-dept.com