

Art Department



LATEST

FEB 2019

PRE-SPRING
MUST HAVE

400CEANS
AMAZING
CAUSE

BLACK VELVET CIRCUS
ETHIC BRAND
INTERVIEW

FROM NORWAY
WITH LOVE
SILJA
DANIELSEN

BEST '18
WEDDINGS

SUSTAINABLE IN
HOMEWARE

#10

Emilie Maslow

www.art-dept.com

Art Department



FROM NORWAY *with Love*

COVER STORY

Photography Kate Moore c/o Alyssa Pizer Management
Art Direction, Stylist Emilie Maslow c/o Art Department
Models Silja Danielson & Phil Torres of WME
Hair style, Makeup Heidi Nymark c/o Art Department

Two apparently very distant worlds collided when Silja Danielson, a Norwegian model, and Phil Torres, an American Biologist, met. It almost seems like the beginning of a very romantic fairytale but it is, in fact, real life. This beautiful couple, whose home is in New York, shares various interests and passions such as travelling and sustainability, so much so that they decided to tie the knot in Seattle last September with a conscious ceremony and reception. We had the pleasure to interview them and discover more details about their fascinating love story and sustainable lifestyle.

words by Laura Zanovella - to page 51

Emilie Maslow

www.art-dept.com

Art Department



Emilie Maslow

www.art-dept.com

Art Department



Emilie Maslow

www.art-dept.com

Art Department



Emilie Maslow

www.art-dept.com

Art Department



Emilie Maslow

www.art-dept.com

Art Department



Emilie Maslow

www.art-dept.com

Art Department



Emilie Maslow

www.art-dept.com

Art Department



Emilie Maslow

www.art-dept.com

Art Department



Emilie Maslow

www.art-dept.com

Art Department

dress by Ulla Johnson



200 | JUTE MAGAZINE

Emilie Maslow

www.art-dept.com

Art Department



Emilie Maslow

www.art-dept.com

Art Department



Emilie Maslow

www.art-dept.com

Art Department



Emilie Maslow

www.art-dept.com

Art Department



Emilie Maslow

www.art-dept.com

Art Department



Emilie Maslow

www.art-dept.com

Art Department



Emilie Maslow

www.art-dept.com

Art Department



Emilie Maslow

www.art-dept.com

Art Department



Emilie Maslow

www.art-dept.com

Art Department



Emilie Maslow

www.art-dept.com

Art Department



Emilie Maslow

www.art-dept.com

Art Department



Emilie Maslow

www.art-dept.com

Art Department



Emilie Maslow

www.art-dept.com

Art Department



Emilie Maslow

www.art-dept.com

Art Department



Emilie Maslow

www.art-dept.com

Art Department



Emilie Maslow

www.art-dept.com

Art Department



Emilie Maslow

www.art-dept.com

Art Department



Emilie Maslow

www.art-dept.com

Art Department



Emilie Maslow

www.art-dept.com

Art Department



Emilie Maslow

www.art-dept.com

Art Department



Emilie Maslow

www.art-dept.com

Art Department



Emilie Maslow

www.art-dept.com

Art Department



Emilie Maslow

www.art-dept.com

Art Department



104 | SEATTLE BRIDE FALL/WINTER 2012

Emilie Maslow

www.art-dept.com

Art Department



Emilie Maslow

www.art-dept.com

Art Department



AN ENCRUSTED SILVER TULLE OVERLAY AND SOFT FLUTTER SLEEVE ARE EQUAL PARTS EASE AND GRACE. Pronovias "Darsena" one-shoulder soft morbido-tulle-overlay gown with flutter sleeve and beading accents, \$2,116. A Princess Bride Couture. OPPOSITE: WOW IN A TWINKLING COCKTAIL FROCK, SHINING WITH ICY SEQUINS, Luly Yang Couture "Celsius" silver sequin long-sleeve cocktail dress with nude silk lining, \$8,200, Luly Yang Couture. Sally Crew crystal loop earrings, \$110, La Belle Elaine's. Martin Flyer alloy ring with a double row of brilliant-cut diamonds (2.3-carat total weight), approximately \$9,775, E.E. Robbins.

100 | SEATTLE BRIDE FALL/WINTER 2012

Emilie Maslow

www.art-dept.com

Art Department



Emilie Maslow

www.art-dept.com

Art Department



FLIP

SIDE

A TIERED TULLE BALLROOM SKIRT AND DELICATE FEATHER APPLIQUE CREATE A WISPY, BALLERINA PROFILE. Luly Blue Collection "Loire" chiffon sweetheart gown with convertible tiered tulle skirt, can be worn as a full ball gown or with shortened skirt (pictured), \$2,500, Luly Yang Couture. Roberto Coin Fantasia Collection 3.37-carat total weight micro-pavé diamond ring, \$11,300; Gregg Ruth 3-carat total weight diamond ring, \$10,620, both from Alvin Goldfarb Jeweler, OPPOSITE PAGE. THIS FLIRTY ONE-SHOULDER NUMBER EVOKES A FIERY FLAMENCO DANCER. Pronovias "Alora" one-shoulder, off-white Catania satin gown with ruffle detail, pleated bodice with A-line silhouette and pick-ups on skirt, \$2,019, A Princess Bride.

SEATTLE BRIDE FALL/WINTER 2011 | 75

Emilie Maslow

www.art-dept.com

Art Department



A LAVISH TRAIN OF ORNATE RAW-EDGE FLORAL ROSETTES IS AMPLIFIED BY A SPARKLING HEADBAND. Luly Yang Diamond Collection "La Vie en Rose" pleated taffeta gown with floral garden skirt, \$4,200, Luly Yang Couture. Pinky ring: 5-carat Asscher-cut diamond ring in micro-pavé diamond setting, \$125,000, by Alvin Goldfarb Jeweler. On ring finger: Platinum and 14K white gold vintage ring centered by a 16.57-carat emerald-cut aquamarine, \$13,930, Isadora's. Erin Cole Design double sparkle silver headband, \$313, La Belle Reve. Benjamin Adams "Yasmin" open-toe ivory satin pumps, \$270, Luly Yang Couture.

Emilie Maslow

www.art-dept.com

Art Department



THE BRIDE IS IN FULL BLOOM IN THIS DISTINCTIVE LULY YANG GOWN EMBELLISHED WITH AN ORNAMENTAL BEADED CENTER. Luly Blue Collection "Gardenia" strapless taffeta gown with beaded floral hem and bust, \$1,550, Luly Yang Couture. Ring finger: Past Present Future 3.09-carat diamond platinum ring, \$126,075; cocktail ring: Oval 8-carat blue topaz ring with diamond surround, \$1,625, both by Alvin Goldfarb Jeweler.

SEATTLE BRIDE FALL/WINTER 2011 | 77

Emilie Maslow

www.art-dept.com

Art Department



Emilie Maslow

www.art-dept.com

Art Department



THIS PAGE: Flapper dress with two-tier steamer skirt of silk netting, gold-injected crystal beads and silver balls with silver bullion slip, circa 1920, \$12,000, from Elsie Katz Couture Museum Collection. Silver pavé and Swarovski crystal earrings, \$95, and champagne silk T-strap shoes with rhinestone buckle, \$290, from Luly Yang Couture. Sterling silver and marcasite bracelet, \$1,200, from Isadora's. Sapphire and diamond ring, circa 1920, \$4,000, from Isadora's.

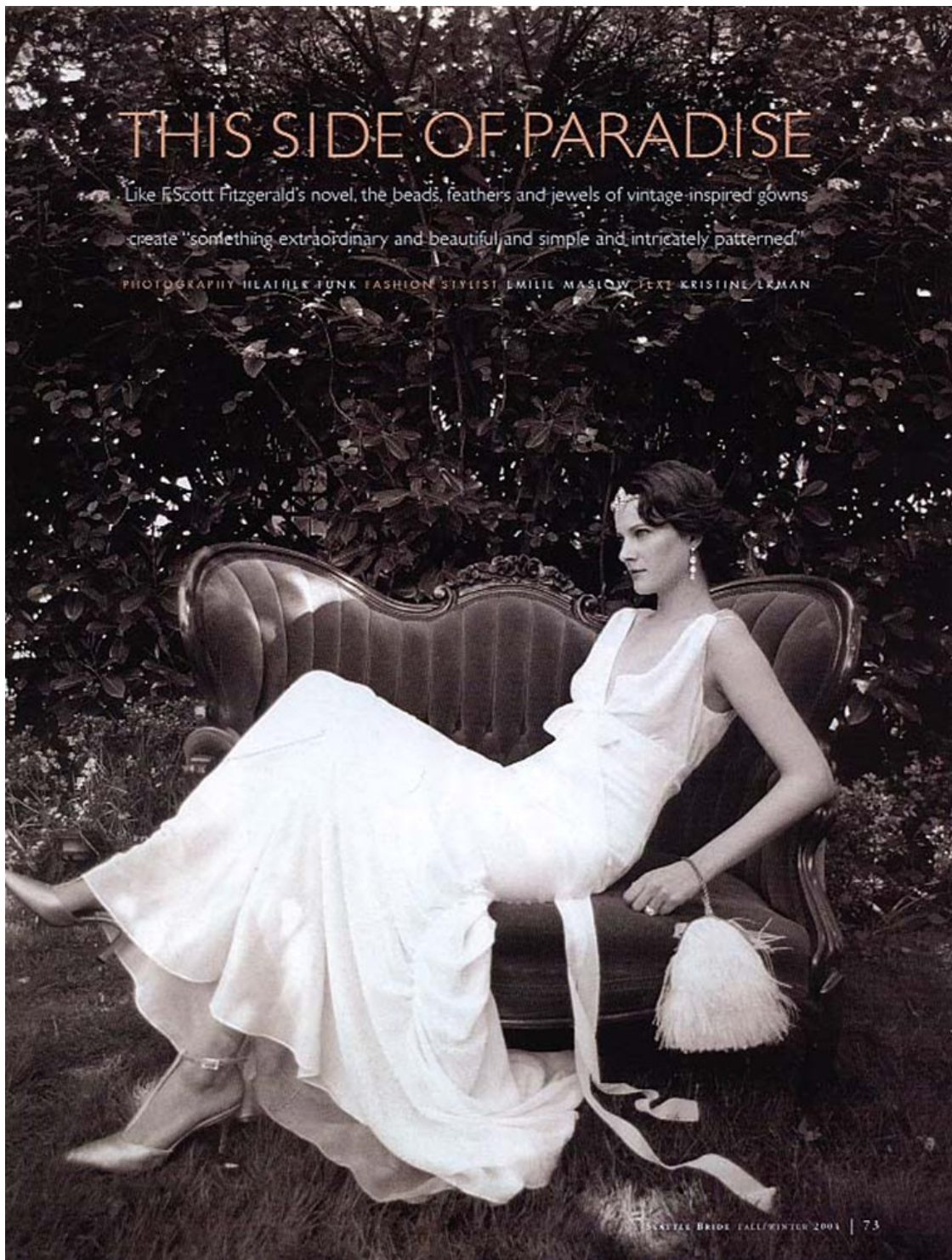
OPPOSITE PAGE: On her: Madina Vadache Couture "Misha" champagne organza gown with tiered ruffle skirt and hand-stitched bodice, \$5,200. Glass pearl necklace/belt, \$585, and champagne large pearl bracelet, \$65, from Luly Yang Couture. Platinum ring with diamonds, circa 1930s, \$875, from Isadora's. Stuart Weitzman cream alligator heels, \$220, from Nordstrom. On him: Hugo Boss tan linen suit, \$695, blue cotton shirt, \$125, and burnt orange-striped silk tie, \$85, and Graven split toe leather shoes, \$425, all from Mario's. Blue and orange plaid cotton pocket square, \$45, from Nordstrom.

SEATTLE MAGAZINE FALL/WINTER 2004 | 73

Emilie Maslow

www.art-dept.com

Art Department



THIS SIDE OF PARADISE

Like ~~the~~ Scott Fitzgerald's novel, the beads, feathers and jewels of vintage-inspired gowns create "something extraordinary and beautiful and simple and intricately patterned."

PHOTOGRAPHY: MELANIE JUNK FASHION STYLIST: EMILIE MASLOW TEXT: KRISTINE LAMAN

STYLING: BRIDE FALL/WINTER 2004 | 73

Emilie Maslow

www.art-dept.com

Art Department



Emilie Maslow

www.art-dept.com

Art Department



Emilie Maslow

www.art-dept.com

Art Department



SPRING AND SUMMER DRESSES SIZZLE WITH FANCIFUL ROSETTES, CAREFREE RUFFLES AND COLORFUL FLORAL ACCESSORIES.

PHOTOGRAPHY BY ZEE WENDELL / STYLED BY EMILIE MASLOW

Emilie Maslow

www.art-dept.com

Art Department



Amsale Ivory taffeta one-shoulder gown, \$4,900, from Voletta Couture. Vintage floral hair piece from Mikele Keller Millinery. Vintage silk flowers (in hair) from Glam by Pam. Vintage Mexican sterling silver bracelet from Isadora's. Turquoise ring from Albert Charles. **OPPOSITE PAGE:** Monique Lhuillier "Sunday Rose" strapless gown with black satin ribbon, \$9,500, from Marcella's La Boutique. Fresh flowers (in hair) from Bella Rugosa. Victorian silver filigree turquoise necklace from Isadora's. For details, see page 159.

CREDITS: Shot on location at Georgetown Studios and The Corson Building. Please visit GeorgetownStudios.com and TheCorsonBuilding.com or Seattle Bride's reception site guide on page 120 for more information about booking your celebration. Makeup: Heidi Nymark for Célestine Agency. Hair: Devan White. Model: Emma Hansen for Heffner Management. Flowers: Bella Rugosa. Digital Tech: Michael Clnard. Photo Assistant: William Rugen. Stylist Assistant: Kathleen Warren.

SEATTLE BRIDE SPRING/SUMMER 2014 | 93

Emilie Maslow

www.art-dept.com

Art Department



Liise Wyatt tea-length dress, \$2,250, from Liise Wyatt. Luly Yang hair flowers and Rodo Burma heels from Luly Yang Couture. All jewelry (except Francesca Lacagnina double-circle cuff) from Isadora's. OPPOSITE PAGE: Oul Weddings "Buttercream" ball gown, \$1,700, from Calla Bridal. Luly Yang hairpiece from Luly Yang Couture. All jewelry (except Francesca Lacagnina cuff) from Isadora's. For details, see page 158.

Emilie Maslow

www.art-dept.com

Art Department



Lazaro ivory hand-beaded and embroidered silk organza trumpet gown, \$5,500, from Marcella's La Boutique. Floral headpiece from Mikele Keiffer Millinery. Sterling and turquoise earrings and Art Deco ring from Isadora's. Amethyst and white gold ring, sterling silver cuff, bangles with freshwater pearls, seed bangles, turquoise ruffled bracelet, pearls cuff and yellow gold dot-textured bangles from Francesca Lacagnina. Antique-style white gold and diamonds wedding band from Greenlake Jewelry Works. **OPPOSITE PAGE:** Vera Wang "Brianna" strapless A-line gown, \$11,900, from Marcella's La Boutique. Kathlin Argiro hair flower from Calla Bridal. Early Victorian steel cut flower earrings and sterling silver "Margo de Taxco" necklace from Isadora's. For details, see page 159.

Emilie Maslow

www.art-dept.com

Art Department



Emilie Maslow

www.art-dept.com

Art Department



Emilie Maslow

www.art-dept.com

Art Department



Emilie Maslow

www.art-dept.com

Art Department



Emilie Maslow

www.art-dept.com

Art Department



Emilie Maslow

www.art-dept.com

Art Department



Emilie Maslow

www.art-dept.com

Art Department



Emilie Maslow

www.art-dept.com

Art Department



Emilie Maslow

www.art-dept.com

Art Department



Emilie Maslow

www.art-dept.com

Art Department



Emilie Maslow

www.art-dept.com

Art Department



Emilie Maslow

www.art-dept.com

Art Department



Emilie Maslow

www.art-dept.com

Art Department



Emilie Maslow

www.art-dept.com

Art Department



Emilie Maslow

www.art-dept.com

Art Department



Emilie Maslow

www.art-dept.com

Art Department



Emilie Maslow

www.art-dept.com

Art Department



Emilie Maslow

www.art-dept.com

Art Department



Emilie Maslow

www.art-dept.com