

Art Department



Sharon Williams

www.art-dept.com

Art Department



Sharon Williams

www.art-dept.com

Art Department



Sharon Williams

www.art-dept.com

Art Department



Sharon Williams

www.art-dept.com

Art Department



Sharon Williams

www.art-dept.com

Art Department



Sharon Williams

www.art-dept.com

Art Department



Sharon Williams

www.art-dept.com

Art Department



Sharon Williams

www.art-dept.com

Art Department



Sharon Williams

www.art-dept.com

Art Department



Sharon Williams

www.art-dept.com

Art Department



Sharon Williams

www.art-dept.com

Art Department



Sharon Williams

www.art-dept.com

Art Department



Sharon Williams

www.art-dept.com

Art Department



Sharon Williams

www.art-dept.com

Art Department



Sharon Williams

www.art-dept.com

Art Department



Sharon Williams

www.art-dept.com

Art Department



Sharon Williams

www.art-dept.com

Art Department



Sharon Williams

www.art-dept.com

Art Department



Sharon Williams

www.art-dept.com

Art Department



Sharon Williams

www.art-dept.com

Art Department



Sharon Williams

www.art-dept.com

Art Department



Sharon Williams

www.art-dept.com

Art Department



Sharon Williams

www.art-dept.com

Art Department



Sharon Williams

www.art-dept.com

Art Department



Sharon Williams

www.art-dept.com

Art Department



Sharon Williams

www.art-dept.com

Art Department



Sharon Williams

www.art-dept.com

Art Department



Sharon Williams

www.art-dept.com

Art Department



Sharon Williams

www.art-dept.com

Art Department



Sharon Williams

Art Department



Sharon Williams

www.art-dept.com

Art Department



Sharon Williams

www.art-dept.com

Art Department



Sharon Williams

www.art-dept.com

Art Department



CAN SILICON VALLEY
SAVE SILICON VALLEY?

**ON SET WITH HBO'S SAVAGE STARTUP
SATIRE AS THE CREATORS CONTEND
WITH A 'DARKER SIDE' OF TECH CULTURE
AND STAR T.J. MILLER'S MESSY EXIT:
'T.J. WASN'T LEBRON'**

BY LACEY ROSE • PHOTOGRAPHED BY SAMI DRASIN

Sharon Williams

www.art-dept.com

Art Department



Sharon Williams

www.art-dept.com

Art Department



Sharon Williams

www.art-dept.com

Art Department



Sharon Williams

www.art-dept.com

Art Department



Sharon Williams

www.art-dept.com

Art Department



Sharon Williams

www.art-dept.com

Art Department



Sharon Williams

www.art-dept.com

Art Department



Sharon Williams

www.art-dept.com

Art Department



Sharon Williams

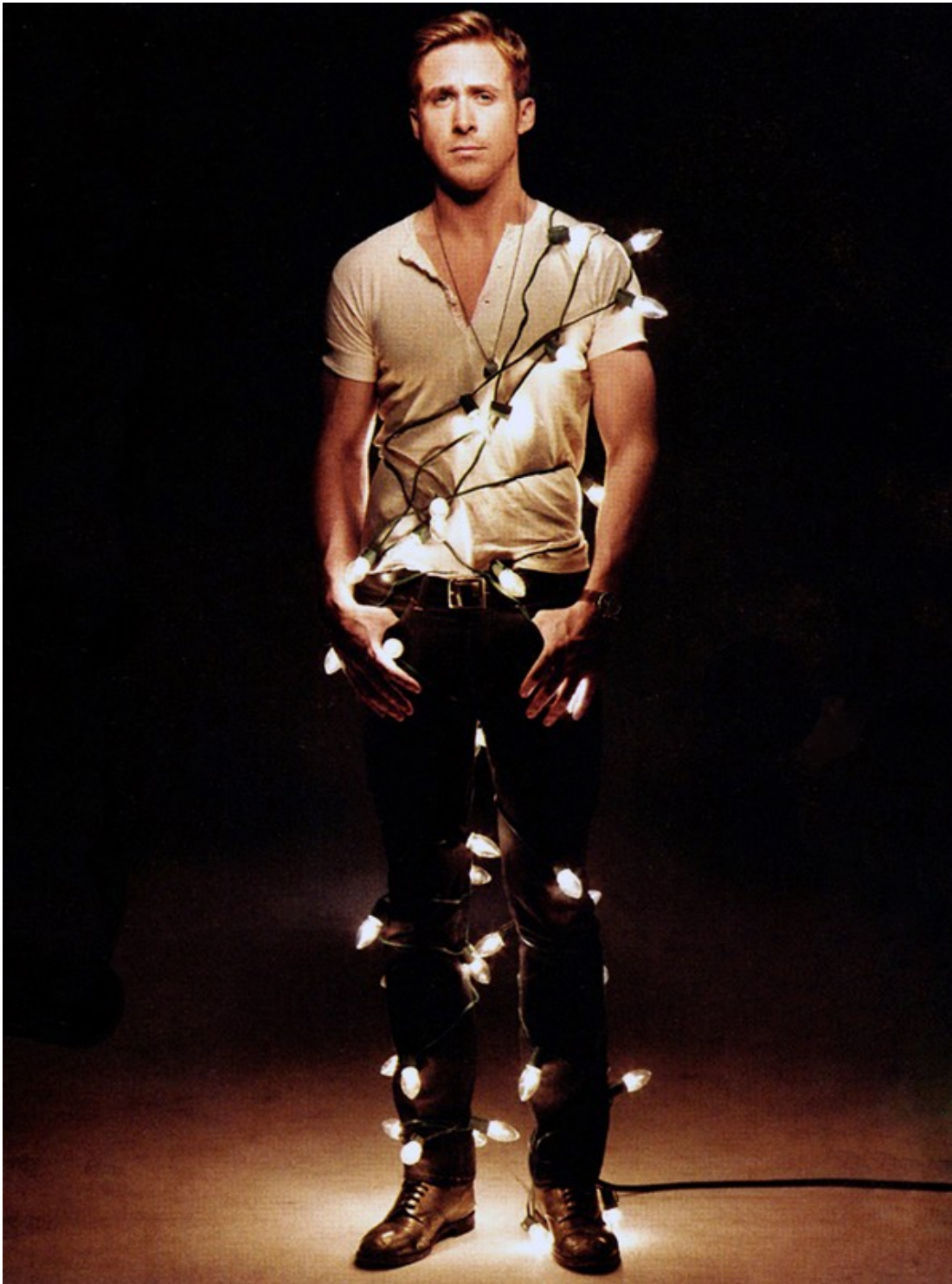
Art Department



Sharon Williams

www.art-dept.com

Art Department



Sharon Williams

www.art-dept.com

Art Department



Sharon Williams

www.art-dept.com

Art Department



NOT AN ACTION FIGURE

This year, Ryan Gosling and a band of similarly arty, polymathic weirdos are leading a revolt against the plastic leading man. **By Logan Hill**

THE MOLOTOV COCKTAIL—a Stolli bottle filled with flammable strawberry liqueur—was his idea. He wanted it to look legit, so he studied James Nachtwey's documentary photos of rioters in Gaza to get the position of his hand on the bottle just right. The original plan was to toss it at a blown-up photo of himself, but the necessary printer wasn't available. Also, there was the possibility of burning the building down. So he found a target at the end of the Culver City alleyway behind the photographer's studio, practicing for a while with empty bottles. Then, as the camera clicked away, Ryan Gosling lit up and hurled, laughing derisively at the subsequent explosion, before blowing it all out with a fire extinguisher. (Recorded for your pleasure, on the next page.)

(Playing the ukulele was Gosling's idea, too.)

Like a lot of men in their twenties and thirties (and he's just 30), Gosling is meandering toward adulthood. He has a boyish enthusiasm for risk and danger, and some of his affectations can border on precious. But his charm is too inexorable for us to care. (How else to explain that, even when the Canadian admits to faking his gravelly Brooklyn accent, you like him all the more.) "Ryan is kind and adorable," says actress Kirsten Dunst, "yet also really dark and weird and manipulative. Everything you'd want in an actor."

But in a leading man? Dark and weird have not, historically, been Hollywood's go-to qualities for its top stars. Yet thanks to a new crop of brains, complicated, and highly autonomous actors—James Franco (*Hool*, *127 Hours*), Jesse Eisenberg (*The Social Network*), and Joseph Gordon-Levitt (*500 Days of Summer*, *Inception*) in America; Tom Hardy (*Bronson*, *Inception*) and Michael Fassbender (*Hunger*, *Fish Tank*) in Europe—a new prototype is seeping into the mainstream. "Some of us are tired of all the sissies

Photographs by Art Streiber

51

Sharon Williams

www.art-dept.com

Art Department



Sharon Williams

www.art-dept.com

Art Department



Sharon Williams

www.art-dept.com

Art Department



Sharon Williams

www.art-dept.com

Art Department



Sharon Williams

www.art-dept.com

Art Department



Sharon Williams

www.art-dept.com

Art Department



Sharon Williams

www.art-dept.com

Art Department



Sharon Williams

www.art-dept.com

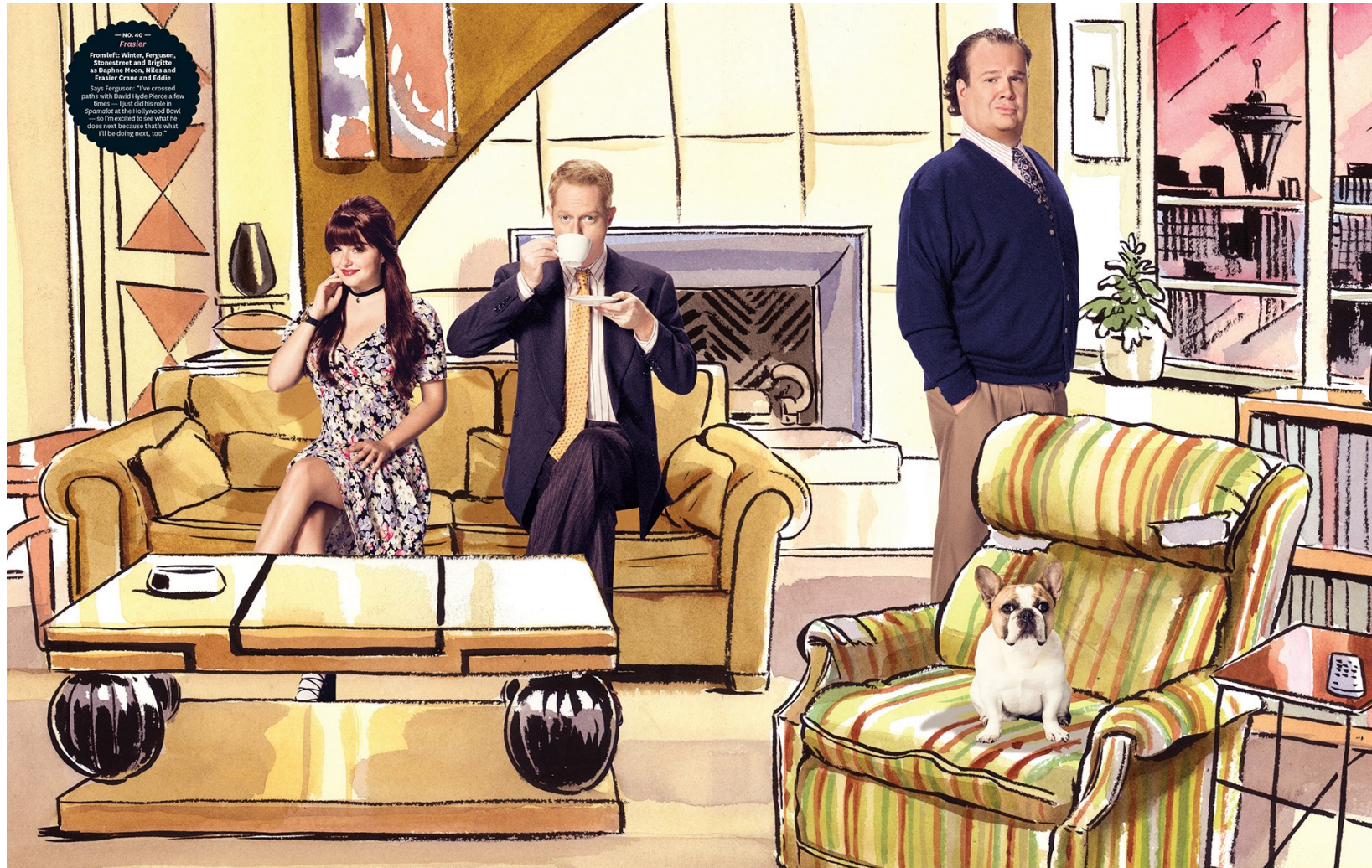
Art Department



Sharon Williams

www.art-dept.com

Art Department



Sharon Williams

www.art-dept.com

Art Department



Sharon Williams

www.art-dept.com

Art Department



Sharon Williams

www.art-dept.com

Art Department



Sharon Williams

www.art-dept.com

Art Department



Sharon Williams

www.art-dept.com

Art Department



Sharon Williams

www.art-dept.com

Art Department



Sharon Williams

www.art-dept.com

Art Department



Sharon Williams

www.art-dept.com

Art Department



Trench en denim,
Burberry. Top,
Alice and Olivia.

Mise en beauté par
Collier Strong pour
L'Oréal Paris avec
la crème Age Perfect
Renaissance
Cellulaire, le Fond de
Teint Infaillible Mat
24h Sable n°20, la
Mascara False Cils
Superstar, le Super
Liner Smokissime
Taupe et le Rouge à
Lèvres Color Riche
rose glacé n°226.
Coiffure **Steeve**
Davault pour **L'Oréal**
Paris avec le Spray
Studio Line Hot&Go
et la Laque Elzett
Volume Excess.

Los Angeles,
avril 2015.

Sharon Williams

www.art-dept.com

Art Department



Los Angeles,
avril 2015.
Veste, A.L.C.
Débardeur, Theory.
Jupes superposées,
Leanne Marshall.

Sharon Williams

www.art-dept.com

Art Department



Sharon Williams

www.art-dept.com

Art Department



Sharon Williams

www.art-dept.com

Art Department



Sharon Williams

www.art-dept.com

Art Department



Sharon Williams

Art Department



Sharon Williams

www.art-dept.com

Art Department



Sharon Williams

www.art-dept.com

Art Department



Sharon Williams

www.art-dept.com

Art Department



Sharon Williams

www.art-dept.com

Art Department



Sharon Williams

Art Department



Sharon Williams

www.art-dept.com

Art Department



Sharon Williams

Art Department



Sharon Williams

www.art-dept.com

Art Department



Sharon Williams

www.art-dept.com

Art Department



Sharon Williams

www.art-dept.com

Art Department



Sharon Williams

Art Department



Sharon Williams

www.art-dept.com

Art Department



Sharon Williams

Art Department



Sharon Williams

www.art-dept.com

Art Department



Sharon Williams

www.art-dept.com

Art Department



Sharon Williams

www.art-dept.com

Art Department



Sharon Williams

www.art-dept.com

Art Department



*«Non sono
**John
Holmes**
ma mi ritengo
fortunato
con quello
che ho»*

Sharon Williams

www.art-dept.com

Art Department



Sharon Williams

www.art-dept.com

Art Department



Sharon Williams

www.art-dept.com

Art Department

SPECIAL ADVERTISING SECTION

MARIA BELLO
ACTOR, ACTIVIST, LEADER

With powerhouse turns in critically acclaimed films such as *The Cooler* and *A History of Violence*, Maria Bello is well known for her on-screen tenacity—but to learn that the actor's passion translates offscreen as a social justice activist for women's causes is an unveiling of her true spirit. "I accept the Unlimited Spirit Award on behalf of the real heroes—the women all over the world, fighting tirelessly for peace and justice." Up next for Bello: the movie *The Company Men* and continuing to give "a voice to the voiceless" through her work with the Haitian organization Femmes en Démocratie.

RADO SWITZERLAND presents

UNLIMITED SPIRIT

INNOVATIVE. INSPIRATIONAL. UNLIMITED. ON THE FOLLOWING PAGES, RADO CELEBRATES THREE CULTURAL LUMINARIES WHO ARE DEFINED BY NOT DEFINING THEMSELVES AT ALL.

Sharon Williams

www.art-dept.com

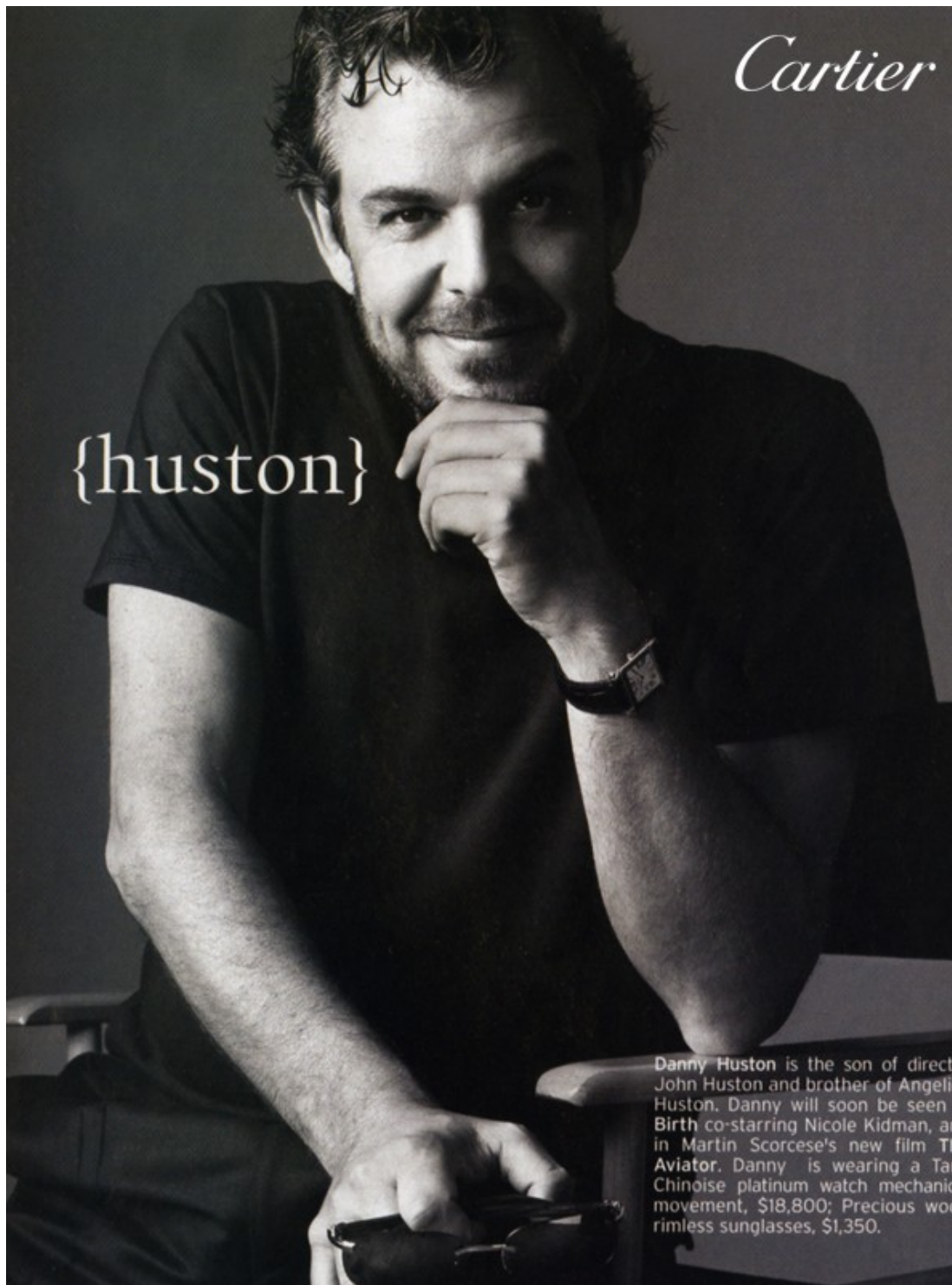
Art Department



Sharon Williams

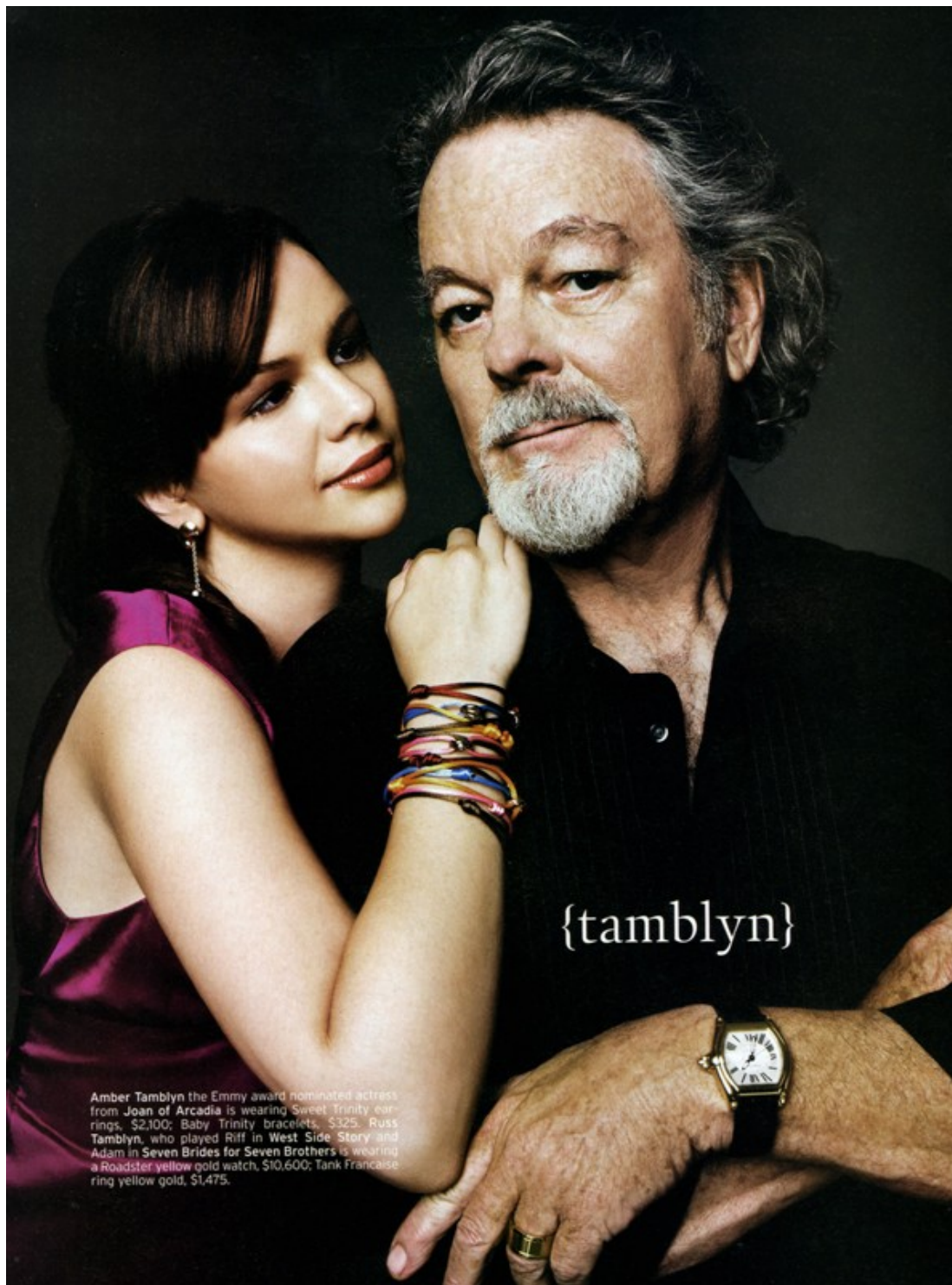
www.art-dept.com

Art Department



Sharon Williams

Art Department



Amber Tamblyn the Emmy award nominated actress from *Joan of Arcadia* is wearing Sweet Trinity earrings, \$2,100; Baby Trinity bracelets, \$325. Russ Tamblyn, who played Riff in *West Side Story* and Adam in *Seven Brides for Seven Brothers* is wearing a Roadster yellow gold watch, \$10,600; Tank Française ring yellow gold, \$1,475.

Sharon Williams

www.art-dept.com

Art Department

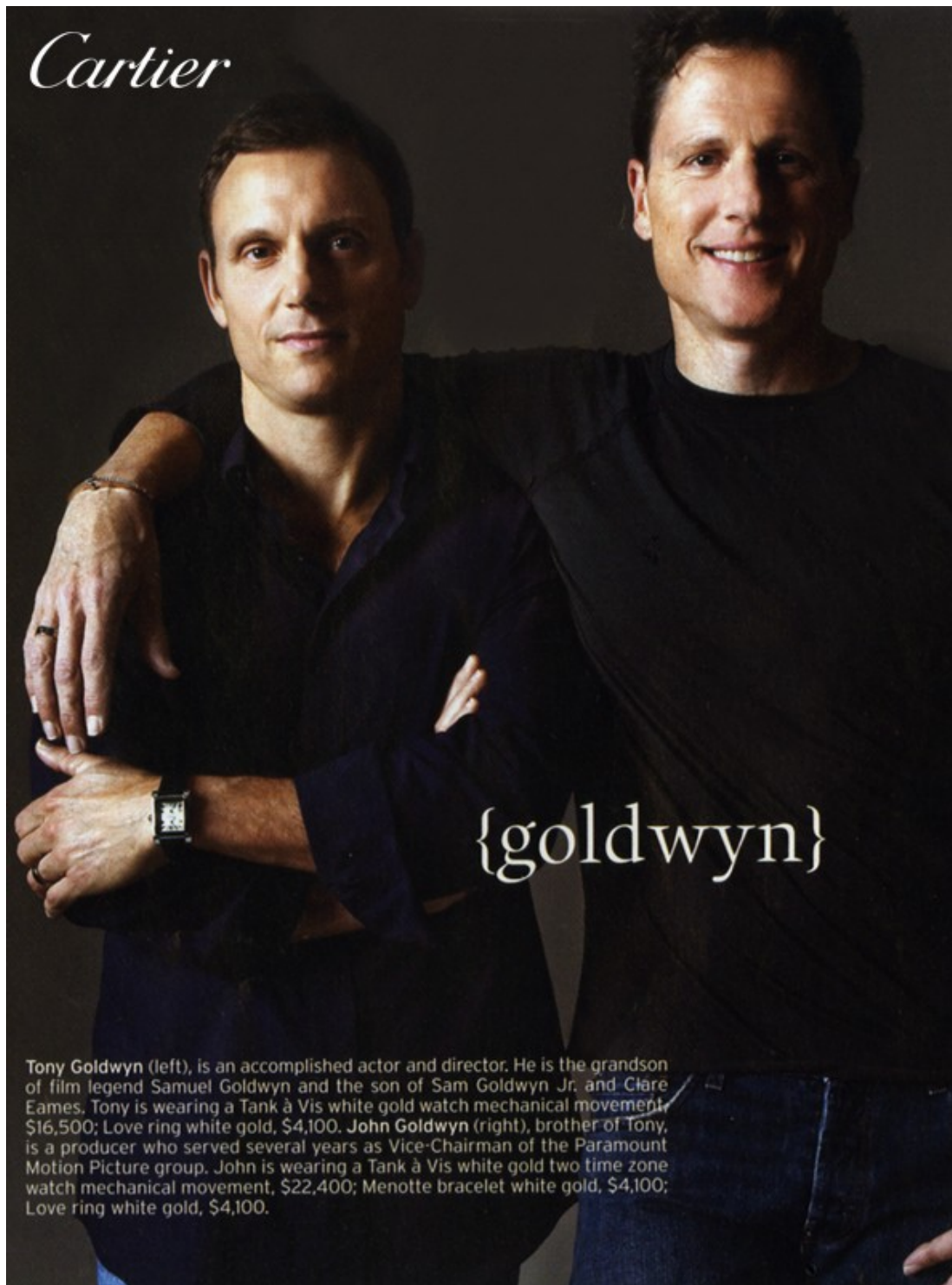


Ione Skye, has appeared in over forty films. She is currently shooting the new Farrelly Brothers film with Drew Barrymore and Jimmy Fallon. Ione is wearing Baby Trinity earrings, \$1,300; Baby Trinity necklace, \$1,700; Baby Trinity pampilles necklace, \$2,100; Tank Francaise yellow gold watch, \$13,100; Spartacus bracelet with Charms starting at \$625; Tank Francaise ring yellow gold, \$1,475. Donovan Leitch has appeared in films ranging from *The Doors* to *I Shot Andy Warhol*; is presently in production on a political documentary starring Andre 3000 from Outkast, and is a member of the band Camp Freddy. Donovan is wearing an American Tank Chronograph yellow gold watch \$10,200; Hi Love ring yellow gold, \$1,400.

Sharon Williams

www.art-dept.com

Art Department



Cartier

{goldwyn}

Tony Goldwyn (left), is an accomplished actor and director. He is the grandson of film legend Samuel Goldwyn and the son of Sam Goldwyn Jr. and Clare Eames. Tony is wearing a Tank à Vis white gold watch mechanical movement, \$16,500; Love ring white gold, \$4,100. John Goldwyn (right), brother of Tony, is a producer who served several years as Vice-Chairman of the Paramount Motion Picture group. John is wearing a Tank à Vis white gold two time zone watch mechanical movement, \$22,400; Menotte bracelet white gold, \$4,100; Love ring white gold, \$4,100.

Sharon Williams

www.art-dept.com

Art Department



Sharon Williams

www.art-dept.com

Art Department



Sharon Williams

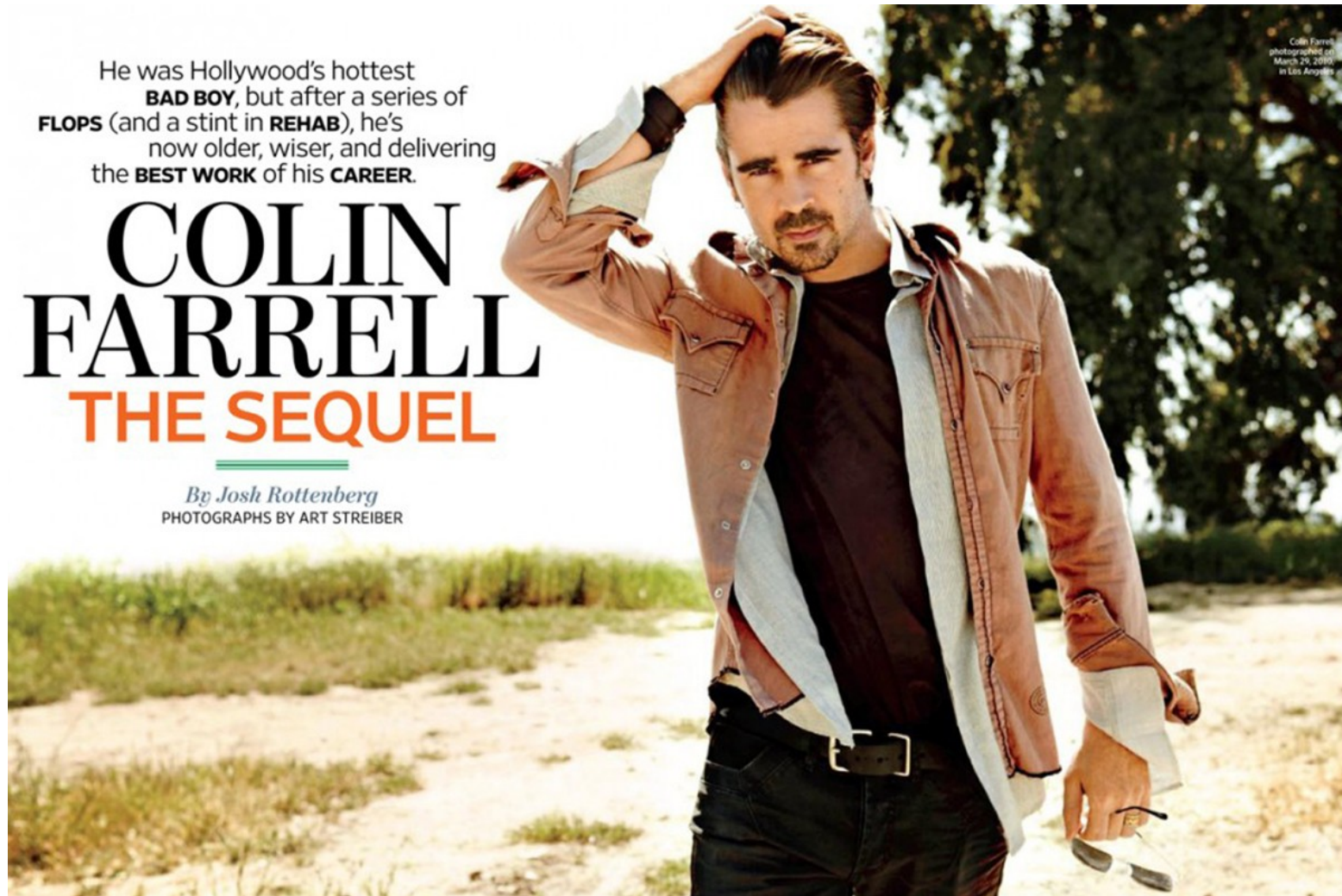
Art Department



Sharon Williams

www.art-dept.com

Art Department



Sharon Williams

www.art-dept.com

Art Department



Sharon Williams

www.art-dept.com

Art Department



Sharon Williams

www.art-dept.com

Art Department



Sharon Williams

www.art-dept.com

Art Department



Sharon Williams

www.art-dept.com

Art Department



PAULIE WALNUTS

"The 'Sopranos' characters were so three-dimensional," says Wilson. "They're more real than the people in my own family; I feel like I know Paulie better than I know my own dad. There's a sadness and a nobility in him, and I was trying to capture his inner self. His inner walnut."
—As told to Whitney Pastorek

Sharon Williams

www.art-dept.com

Art Department



Sharon Williams

www.art-dept.com

Art Department



Sharon Williams

www.art-dept.com

Art Department



Sharon Williams

Art Department



Sharon Williams

Art Department



Sharon Williams

www.art-dept.com

Art Department



Sharon Williams

www.art-dept.com

Art Department

AND RECREATION

C in April 2009, it difference (do we vice-style mocku-ratching (an entire it into a park?). ing the comedy and nts in season 2 ler; hello, Rob Lowe s—which follows nope and other the Indiana burg of tics and viewers er yet sweetly then NBC left the le. While fans were g may have proved When *Parks* nabbed the 30 p.m. slot s frustrat-l shows

m
e
;

re
ls is
p
the
Dwyer:
e Bad News
quad of misfits
in the life of our
re sort of trick play
e. Don't count us
. We'll eye-gouge.
kill us dead!" It's
t makes us love
e 101 other things.

REASONS WE LOVE...

AMY POEHLER AS

Leslie Knope

1. The parks department deputy director might be prime time's most idealistic and, yes, committed character. "What's so fun about playing Leslie is she gets to be really sharply focused on things," notes Poehler. "And like a terrier, she won't let them go."

2. Leslie's drab wardrobe feels just right for a small-town



Sharon Williams

www.art-dept.com

Art Department

wouldn't feel
/s you've seen
e *The Office*,"
l one of the
oofy grin."
sartorial
which have
n cap,
iat, and
boys' suits.
fused an iPod
tic vacuum
DJ Roomba.
ace a hip-hop/
erence into
ng identify-
! Thugs-
).
cere

"Aziz
stone-
ghing
ed

e
n
s
-
1-



Sharon Williams

www.art-dept.com

Art Department

72. to look forward to this: "I have a little bit of an empowered-slut story line," says Jones. "There are some times where I really just go for it."

46. Watching Ann, who was firmly in control of her previous relationships, get swept off her feet by Chris. "One of our goals this year was to really show off Rashida's comedy chops," says Schur. "Rashida is a very intelligent and attractive woman, and it's hard to knock someone like that off balance. And the way to knock that person off balance is to get Rob Lowe in a relationship with you."

47. How her endearing insecurities surface during her camera chats. "That's just Rashida awkwardness," admits Jones. "I end up second-

was one time I thought he farted, but it was me."



Sharon Williams

Art Department



Sharon Williams

www.art-dept.com

Art Department



Sharon Williams

www.art-dept.com

Art Department



Sharon Williams

www.art-dept.com

Art Department



Sharon Williams

www.art-dept.com

Art Department



Sharon Williams

www.art-dept.com

Art Department



Sharon Williams

www.art-dept.com

Art Department



Sharon Williams

www.art-dept.com

Art Department



Sharon Williams

www.art-dept.com