

# Art Department



Charlotte Day

[www.art-dept.com](http://www.art-dept.com)



# Art Department



Charlotte Day

[www.art-dept.com](http://www.art-dept.com)



# Art Department

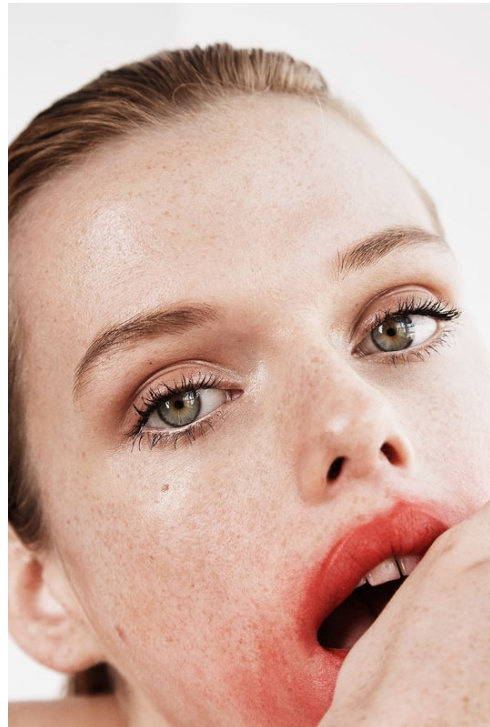


## Charlotte Day

[www.art-dept.com](http://www.art-dept.com)



# Art Department

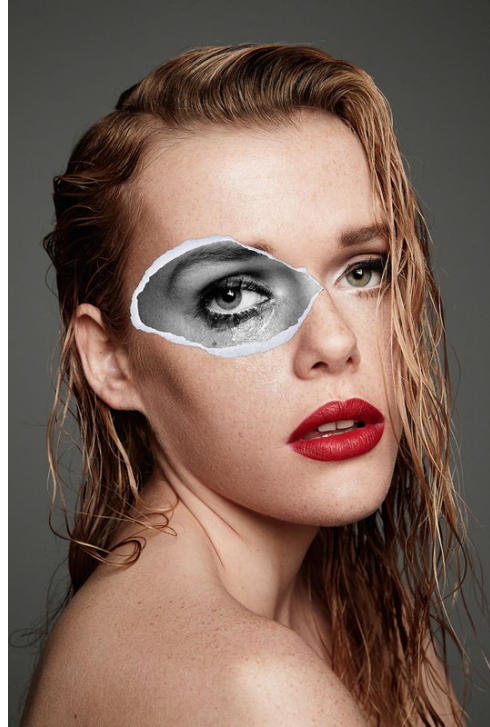


Charlotte Day

[www.art-dept.com](http://www.art-dept.com)



# Art Department



Charlotte Day

[www.art-dept.com](http://www.art-dept.com)



# Art Department

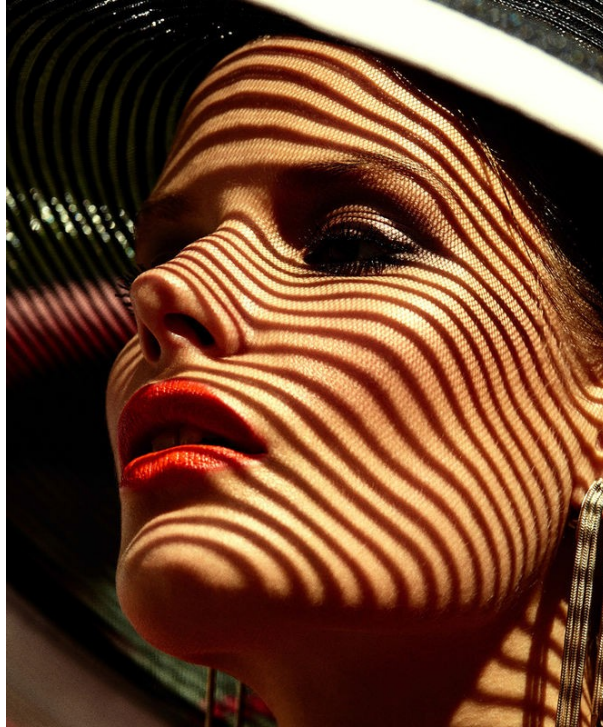


Charlotte Day

[www.art-dept.com](http://www.art-dept.com)



# Art Department



## 3 DEFINE LIPS AND LASHES

"I love this clean and polished look," says Anais. This is the ultimate '90s supermodel no-makeup make-up – natural but defined. Cheeks pop with a sharp contour (The Sculpting Powder in Medium £35 Kevin Aucoin) topped with a fresh flush (The Blush in Peach £31 Dolce & Gabbana). For the ultimate nude pout, line lips with the perennial backstage staple Lip Pencil in Spice £12.50 maccosmetics.co.uk and fill in with Anais' favourite pinky nude, Classic Cream Lipstick in Delight £25.50 Dolce & Gabbana. On eyes? Lashings of The Colossal Go Extreme Mascara £6.99 Maybelline New York. And nails just get one coat of Intense Nail Lacquer in Perfection £18.50 Dolce & Gabbana ►

228

229

## Charlotte Day

[www.art-dept.com](http://www.art-dept.com)



# Art Department

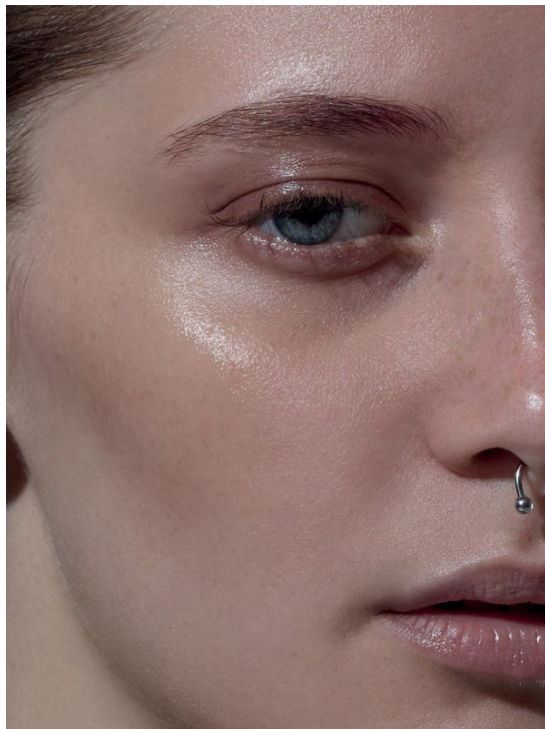


Charlotte Day

www.art-dept.com



# Art Department



Charlotte Day

[www.art-dept.com](http://www.art-dept.com)



# Art Department



*Marlene wears NARS.*

423



*Jessi wears  
SONIA RYKIEL  
and HEATHER  
HUEY hat.*

IN THIS STORY: *Hair* by Peter Gray for Shu Uemura  
*Art of Hair* @Home Agency. *Makeup* by Charlotte  
Day using NARS Cosmetics @See Management.  
*Model*: Paula Klimczak, Phoenix Anderson,  
Marloes Stevens, Jessi Silolatti, Lara Ghraoui,  
Bruna Lirio, Emely Montero @Wilhelmina.  
*Digital Imaging*: Alexander Dow. *Stylist assistant*:  
Marciano Ramirez. *Photo assistant*: Chris Medina,  
Yasunori Matsui, Matthew Vicari. *Producer*: Julia  
Ferrier @Smooch NYC. *Shot at* Go Studios.

420

421

## Charlotte Day

[www.art-dept.com](http://www.art-dept.com)



# Art Department



424

425



## Charlotte Day

[www.art-dept.com](http://www.art-dept.com)



# Art Department

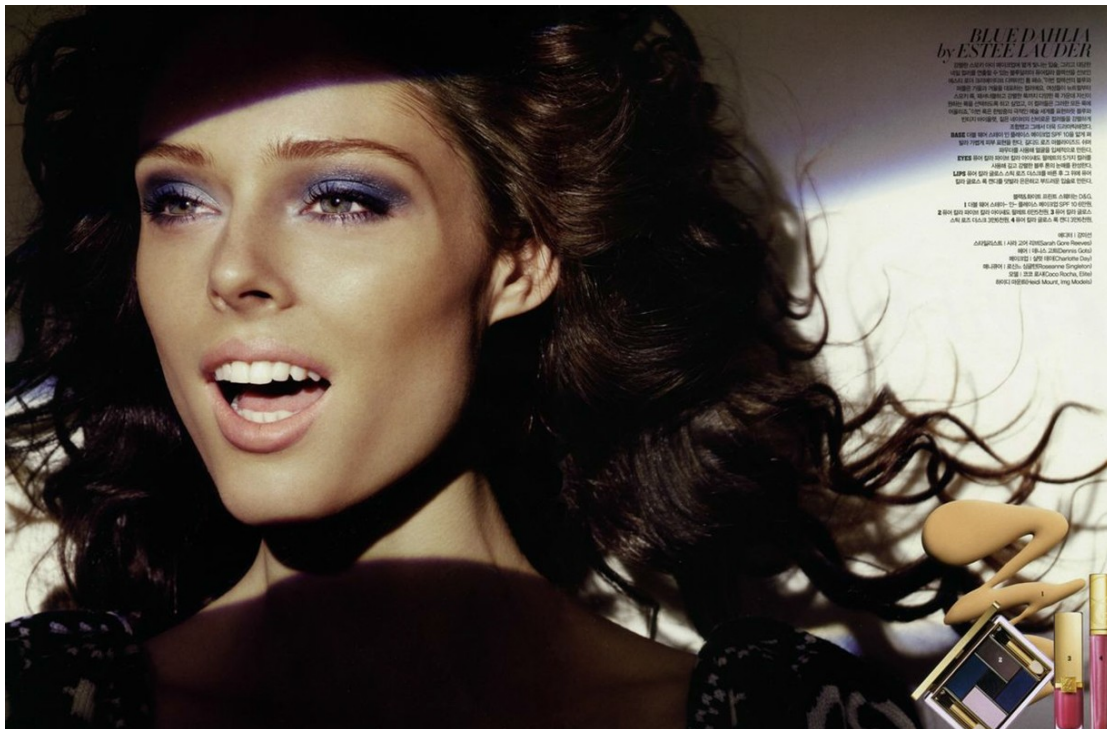


Charlotte Day

[www.art-dept.com](http://www.art-dept.com)



# Art Department



Charlotte Day

[www.art-dept.com](http://www.art-dept.com)



# Art Department

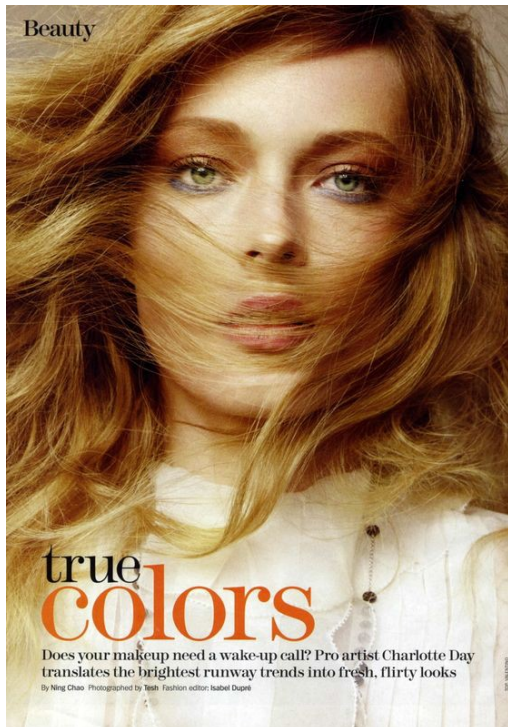


Charlotte Day

[www.art-dept.com](http://www.art-dept.com)



# Art Department



Charlotte Day

[www.art-dept.com](http://www.art-dept.com)



# Art Department



Charlotte Day

www.art-dept.com



# Art Department



Charlotte Day

[www.art-dept.com](http://www.art-dept.com)



# Art Department

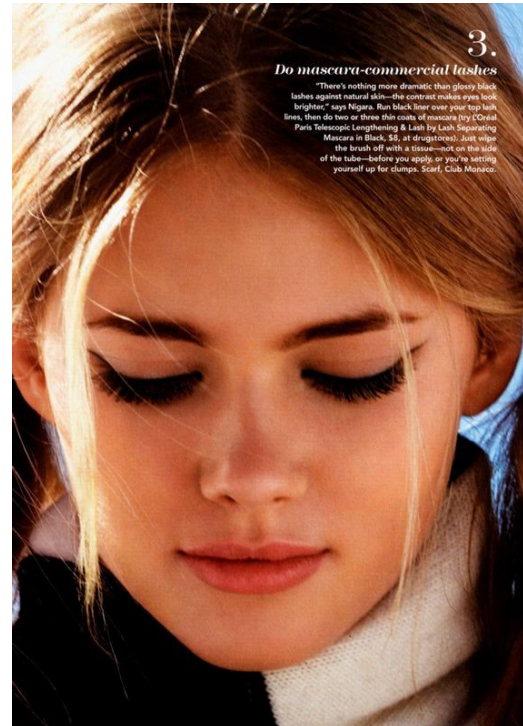
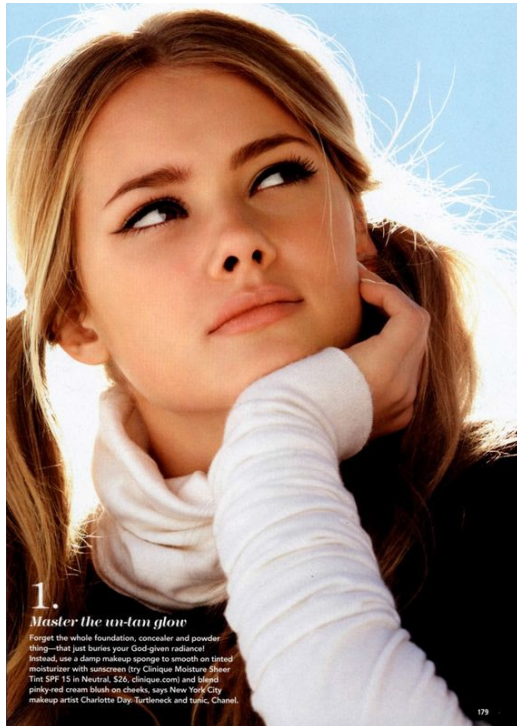


## Charlotte Day

[www.art-dept.com](http://www.art-dept.com)



# Art Department



Charlotte Day

[www.art-dept.com](http://www.art-dept.com)



# Art Department



Charlotte Day

[www.art-dept.com](http://www.art-dept.com)



# Art Department



Charlotte Day

[www.art-dept.com](http://www.art-dept.com)

# Art Department



Charlotte Day

[www.art-dept.com](http://www.art-dept.com)



# Art Department



Charlotte Day

[www.art-dept.com](http://www.art-dept.com)

# Art Department



Charlotte Day

[www.art-dept.com](http://www.art-dept.com)



# Art Department



## BRIGHTER EYES

There's a strong trend for smoky eyes this summer, says catwalk make-up artist Alexandra Byrne. Dark shadow in summer may seem incongruous, but its new glossy texture catches the light, making eyes brighter. On this shoot, the shade is paired with clean, fresh skin and neutral, glistening lips.

**SUBTLE KOHL** Use a smudge, super-shiny eye cream like Dior Eye Show in Undressed Beige, £17.50, then wet a black kohl pencil and apply it heavily on the lash line. Calvin Klein Eye Definition Eye Pencil in Black, £9, is softer than others, making it easier to work with. Blend it up towards the crease line with your finger, creating a graduation from intense at the lash line to transparent around the edges.

**WILL IT GLASS** If you forget to remove them, always apply gloss around the eye. It won't slip below the lower lash line, as you don't have as many oil deposits there, but coat lashes with waterproof mascara just in case. Choose goosy pigments that don't run or crease too much. Try Nars Cream Eyeshadow, £15, or MAC Paint Pot, £12. Finish with Lancôme Hypnôse Ombre mascara, £19.50.

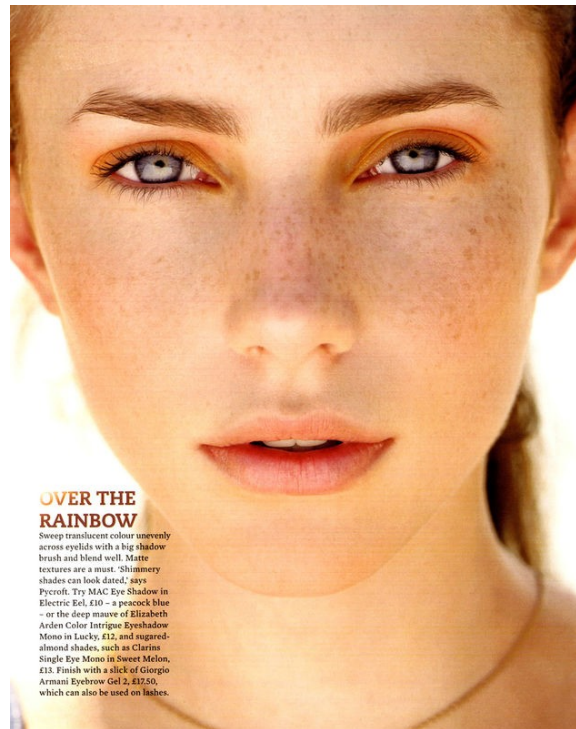
**POWDER CHEAT** Fine shimmer eyeshadow looks like liquid but has staying power, says Greenwell. Try Prestige Shimmering Eye Shadow Dust, £4.99. For more drama, Byrne suggests Shu Uemura Pressed Eye Shadow in Metallic Black, £11. For a wet shimmer, dab iridescent highlighter, such as such as Calvin Klein Endless Crème Concealer in Bisque, £11, on the centre of eyelids. »



## PLAYING UP

A scattering of flowers and a few sexy tendrils will transform any girl into a modern gypsy. 'The finish is groomed and polished rather than grungy,' says stylist Kevin Murphy. To achieve this up-do, massage through a soft texturiser like Kevin Murphy Motion Lotion, £11.95, and leave to dry naturally. Then pin the sides of the hair to the back of the head leaving tendrils free to frame the face. 'Accessories with whatever you can find – must of all have fun,' says Edwards. »

AUGUST 2008 169



## OVER THE RAINBOW

Sweep translucent colour unevenly across eyelids with a big shadow brush and blend well. Matte textures are a must. 'Shimmery shades can look dated,' says Pycroft. Try MAC Eye Shadow in Electric Red, £10 – a peacock blue – or the deep mauve of Elizabeth Arden Color Intrigue Eyeshadow Mono in Lucky, £12, and sugared-almond shades, such as Clarins Single Eye Mono in Sweet Melon, £13. Finish with a slick of Giorgio Armani Eyebrow Gel 2, £17.50, which can also be used on lashes.

# Charlotte Day

www.art-dept.com