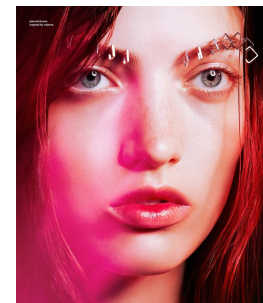


Art Department



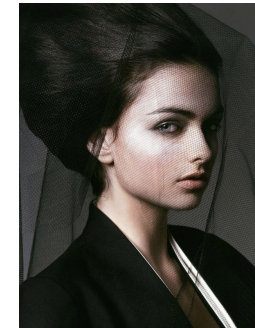
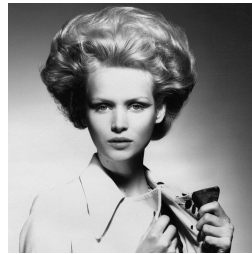
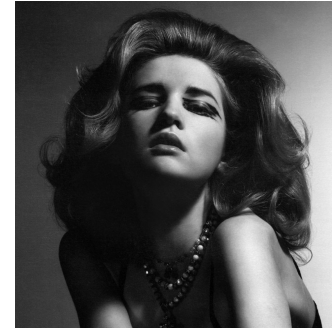
Devra Kinery

www.art-dept.com

Art Department



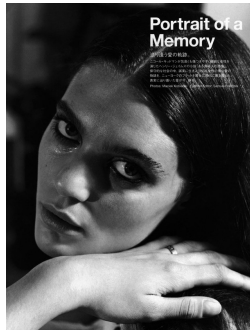
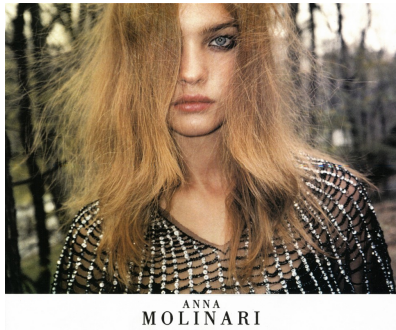
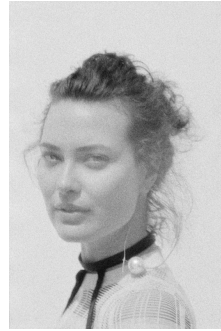
PHOTOGRAPHED BY GUY AROCH
SPELLBOUND
WHAT IS MORE ALLURING THAN A WOMAN
WHOSE EYES ARE THE ONLY PART OF HER
ADD A SMILE OF FANGS, STARS OF LIPSTICK
COMBINATION BY A COQUETTE ALIENIST
The photographer, Guy Aroch, has a unique style that combines the classic with the modern. His subjects are often women with striking features, and he uses a variety of lighting and composition to create a sense of mystery and allure. In this series, he explores the theme of the 'spellbound' woman, using a combination of classic and modern elements to create a unique and captivating visual language.



Devra Kinery

www.art-dept.com

Art Department



Devra Kinery

www.art-dept.com

Art Department



Devra Kinery

www.art-dept.com