

Art Department



Jeannia Robinette

www.art-dept.com

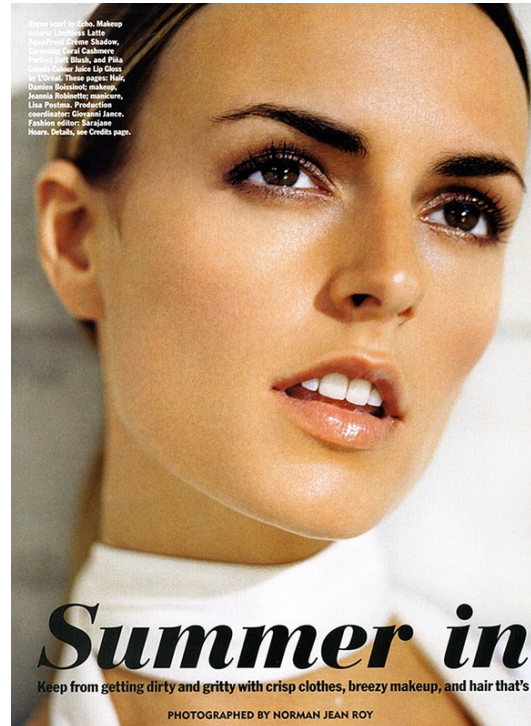
Art Department



Jeannia Robynette

www.art-dept.com

Art Department



Jeannia Robinette

www.art-dept.com

Art Department



Full Bloom

Some women fear that a big flower will turn them into the Black Dahlia—but the trick is to wear it back from the face. Here, Charles secured the clip three inches from the temple. “Any closer, and it could look too costume-y,” he says. Metal hair clip by Lavin. Chiffon dress by Helmut Lang. Makeup colors: Ivory Blush Dream Mousse Shadow, Soft Plum Dream Mousse Blush, Sand Superstay Lipstick and Crimson Express Finish Advanced Wear Nail Color by Maybelline New York. Details, see Credits page.

220



Double Band

Any updo (or down-do) can be embellished by a chain bracelet. Push one band back to the crown and the other near the hairline, making sure to tug up the hair between to reduce the pin factor. Double chain-and-ribbon band by Core Couture. Silk blouse by BCBG Max Azria Collection. Makeup colors: Metal Moon Pure Peppermint Eyeshadow, Honey Shimmer Blush Light Creamy Cheek Color, and Satin Orchid Pure Color Crystal Gloss by Estée Lauder. These jewels: Halo. Tulle Charles for Dea Sade. Jewelry: Jeannia Robinette. Hair: John. Makeup: Jeannia Robinette. Fashion: Jeff. Details, see Credits page.

220



Blue Eyes

When brushed on sparingly, blue shadow enhances both dark and light eyes. Dumpy on a whole Piz Shit's worth, and you'll end up resembling Veruca Salt. “I used a box of eye shadow for this picture,” Robinette says, “but the look doesn't translate well to real life—unless you're going clubbing.” She recommends applying a vibrant blue pencil along the upper lashes and smudging it with your fingers. “You can also mix light blue eye shadow with silver. Brush it over lids so there's just a little bit of color.”

Makeup colors: Moonlight Twinkle eye shadow, Berry Sunset Blush, and Halo Blush lipstick by Maybelline. Silk pajama top by Emporio Armani. Details, see Credits page.

245



Allover Pink

A strawberry blush can make anyone look Starburst-jolly. Sheer lipgloss and gel sticks blend easily into the skin, rather than sitting on top the way powder does. “Just smile, dot some on the apples of your cheeks, and smudge gently with fingertips for a natural glow,” Robinette says. Lips get a swipe of pink or peach gloss that's as transparent and succulent as a Jolly Rancher.

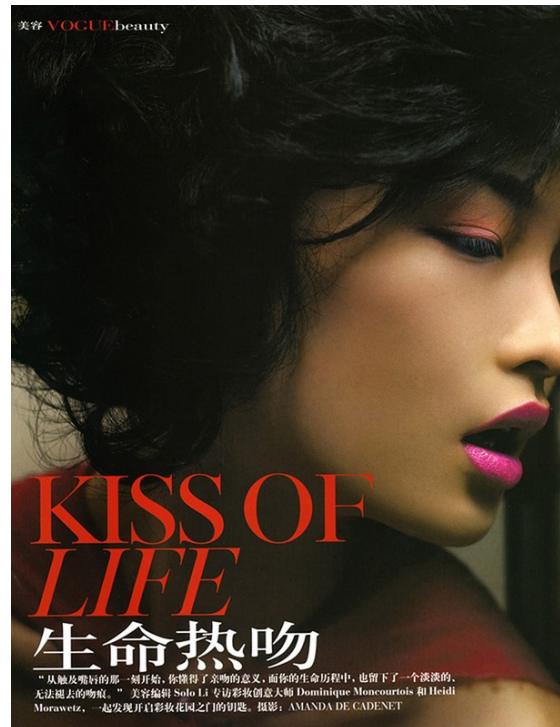
Makeup colors: Ice Blush and Ice Pop eye shadow, BerryLight Blush, Crystal Baby lipstick, and Ice Pink lip gloss by Estée Lauder. Chiffon dress by Helmut Lang. Details, see Credits page.

244

Jeannia Robinette

www.art-dept.com

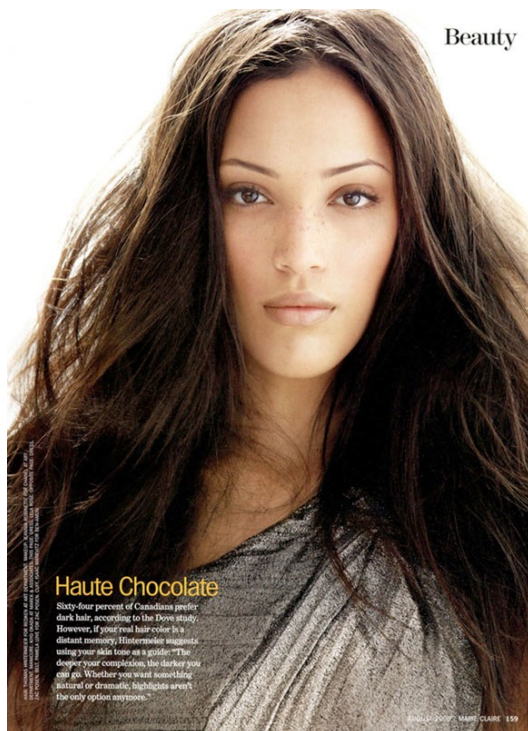
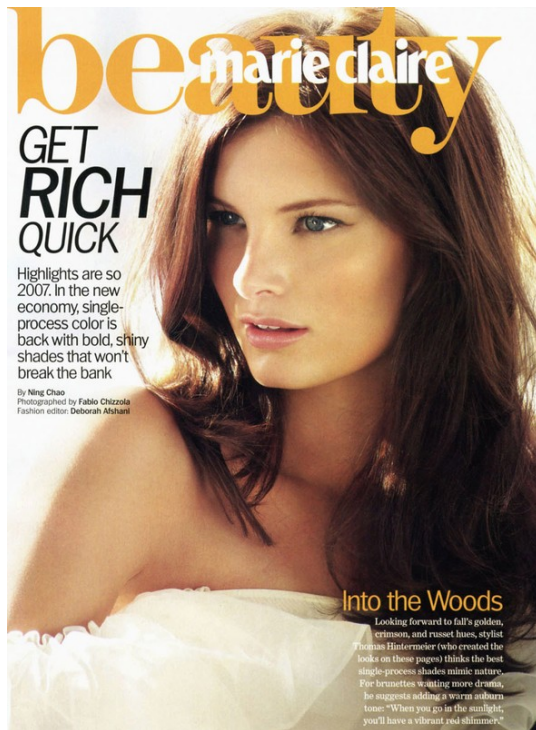
Art Department



Jeannia Robinette

www.art-dept.com

Art Department



Jeannia Robinette

www.art-dept.com

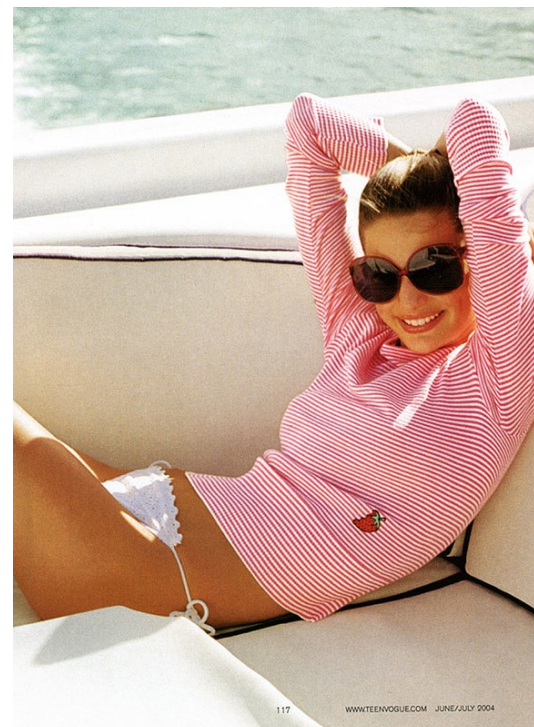
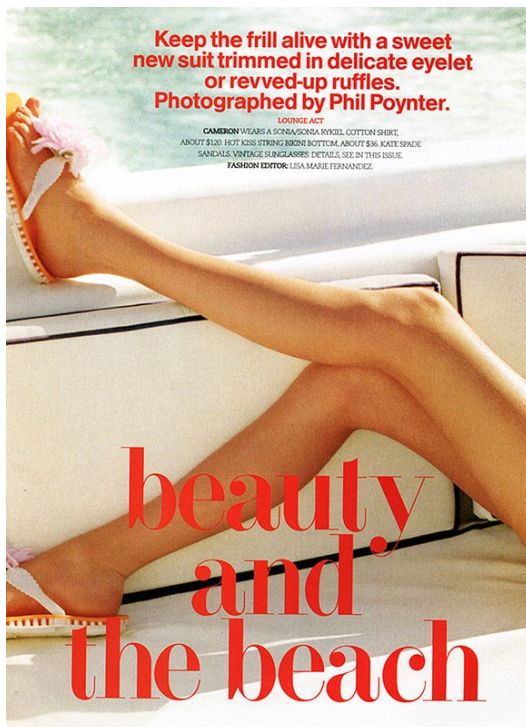
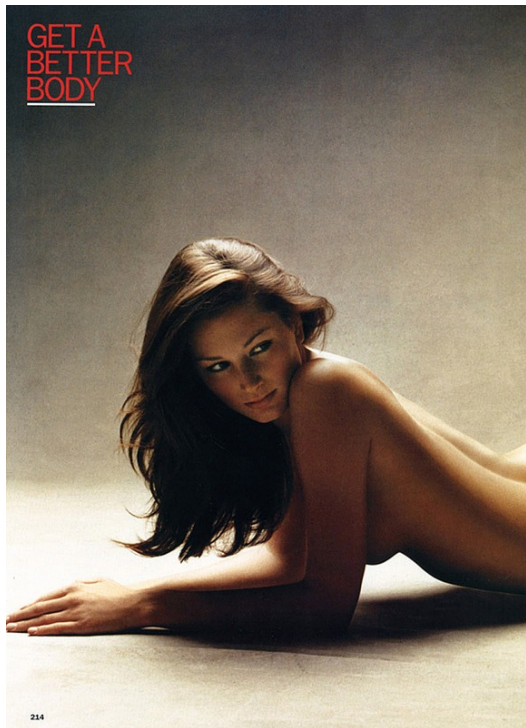
Art Department



Jeannia Robinette

www.art-dept.com

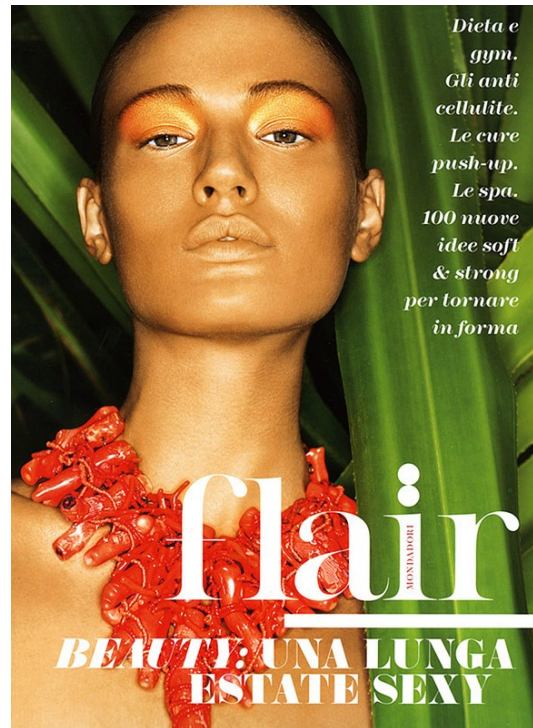
Art Department



Jeannia Robinette

www.art-dept.com

Art Department



Jeannia Robinette

www.art-dept.com