

# Art Department



Willow Mayor

[www.art-dept.com](http://www.art-dept.com)

# Art Department



Suéter amarillo  
(Pringle of Scotland); pantalón a  
rayas (Polo Ralph  
Lauren) y slip  
azul (Calvin Klein).

## Willow Mayor

[www.art-dept.com](http://www.art-dept.com)



# Art Department



Vestido amarillo (Blumarine); suéter (Joy is Happiness) y camisola vintage (Screaming Mimi's, New York).  
Asistente de coordinación: Sofía Bozikis.  
Maquillaje y peinados: Willow Mayor. Modelo: Miriam Anderson (Lizbell Agency).  
Producción: Toby Armitt.  
Arte digital: larry@statikdigital.com

## Willow Mayor

[www.art-dept.com](http://www.art-dept.com)

# Art Department



Top (Mary Greene);  
camisa (Abercrombie  
& Fitch); shorts (Polo  
Ralph Lauren) y san-  
dalias (Birckenstock).

## Willow Mayor

[www.art-dept.com](http://www.art-dept.com)



# Art Department



Willow Mayor

[www.art-dept.com](http://www.art-dept.com)

# Art Department

## Country club

PARA MONTAR O PASEAR, LAS PIEZAS MÁS CHIC PARA LUCIR EN EL CAMPO.  
[Fotos Amanda Pratt Coordinación de moda Courtney Marks]



Chaqueta (Luca  
Luca); blusa  
(Y & Kell); pantalón  
(MaxMara),  
y botas (Hermès).

## Willow Mayor

[www.art-dept.com](http://www.art-dept.com)



# Art Department



Blusa roja  
(Y & Kei). Tip  
de belleza: para  
este look, prueba  
smoky eyes y  
labios definidos  
en rojo oscuro.

## Willow Mayor

[www.art-dept.com](http://www.art-dept.com)

# Art Department



Chaqueta  
(DKNY); chaleco  
(Sass & Bide);  
blusa (Y & Kei);  
pantalón y som-  
brero para mon-  
tar (ambos, Cop-  
perfields NYC), y  
botas (Hermès).

## Willow Mayor

[www.art-dept.com](http://www.art-dept.com)



# Art Department



Vestido (Paul &  
Joe). Peinados:  
John Ruidant.  
Maquillaje: Willow  
Mayor. Modelo:  
Katerena Alkhimo-  
va (Ford). Manicu-  
re: Ana Maria para  
artistsbytimothy-  
priano.com

## Willow Mayor

[www.art-dept.com](http://www.art-dept.com)

# Art Department



Blusa morada  
(Lauren); chaleco  
en lana estampa-  
da y pantalón  
(ambos, Cynthia  
Steffe), y broche  
(RJ Graziano).

## Willow Mayor

[www.art-dept.com](http://www.art-dept.com)



# Art Department



Willow Mayor

[www.art-dept.com](http://www.art-dept.com)

# Art Department



Willow Mayor

[www.art-dept.com](http://www.art-dept.com)



# Art Department



Willow Mayor

[www.art-dept.com](http://www.art-dept.com)

# Art Department



Willow Mayor

[www.art-dept.com](http://www.art-dept.com)



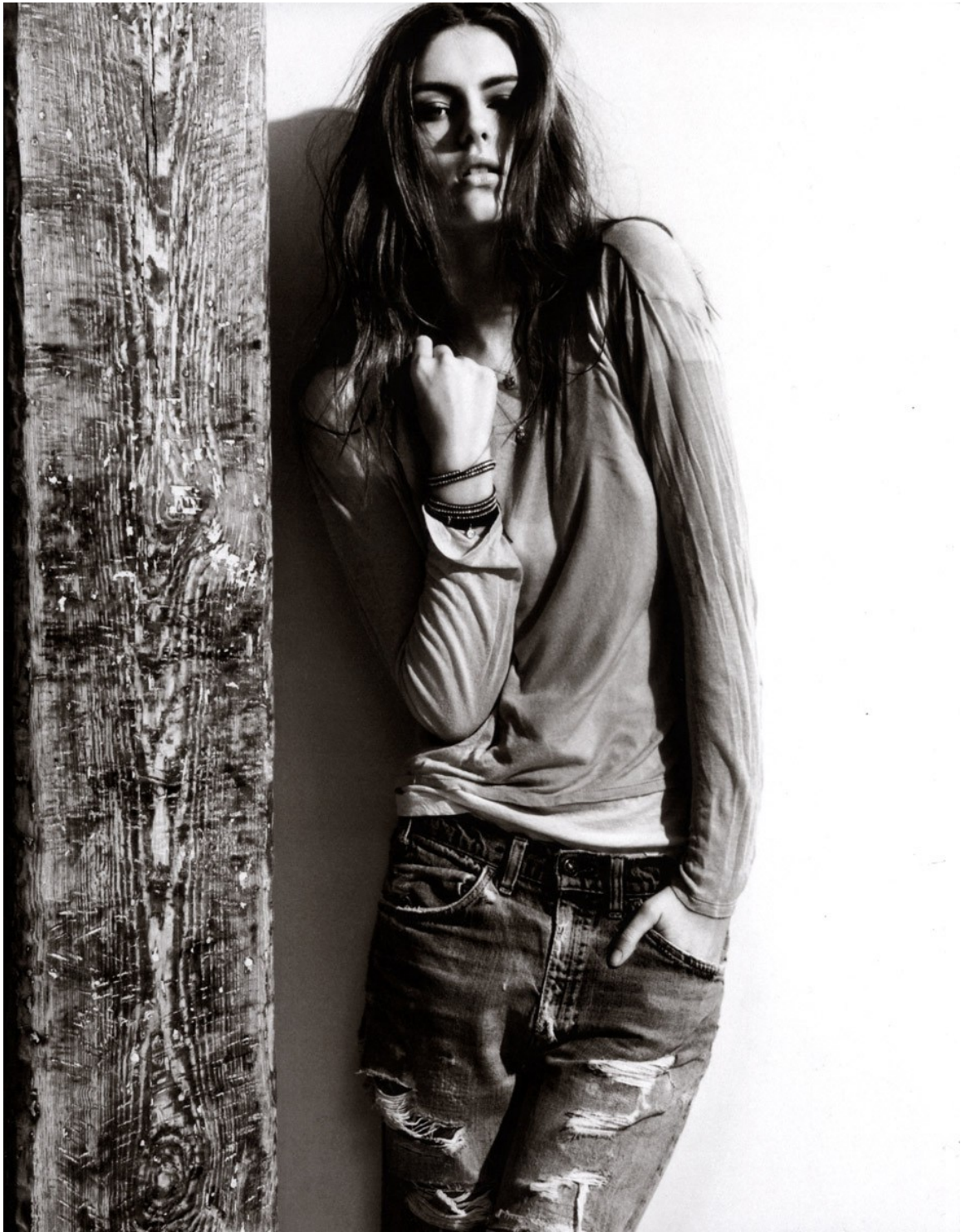
# Art Department



Willow Mayor

[www.art-dept.com](http://www.art-dept.com)

# Art Department



Willow Mayor

[www.art-dept.com](http://www.art-dept.com)



# Art Department



Willow Mayor

[www.art-dept.com](http://www.art-dept.com)

# Art Department



Willow Mayor

[www.art-dept.com](http://www.art-dept.com)



# Art Department



Willow Mayor

[www.art-dept.com](http://www.art-dept.com)

# Art Department



Athena lleva un vestido de gasa (Betsey Johnson), estola de lentejuelas (BCBG) zapatos (Max Mara) y aretes (Fragmentos).

## Willow Mayor

[www.art-dept.com](http://www.art-dept.com)



# Art Department



Athena usa un  
vestido de raso  
(Karen Walker),  
medias (Wolford),  
sandalias (Nina  
Ricci), collares  
(Lee Angel) y  
anillo (Balboa).

## Willow Mayor

[www.art-dept.com](http://www.art-dept.com)



# Art Department



Athena luce una chaqueta (Kaufmans Army & Navy), un vestido (Blugirl by Blumarine), zapatos (Eugenia Kim), medias (Look of London) y collar (RJ Graziano). Maquillaje: Willow Mayer para Nars Cosmetics. Peinados: Lisa Raquel para Culter NYC/Redken. Props: Sonia Niki. Modelos: Edda (Supreme), Amanda Salvato (Next) y Athena Currey (Next). Asistente de coordinación: Siobhan O'Brien. Arte digital: Larry @ statikdigital.com

## Willow Mayor

[www.art-dept.com](http://www.art-dept.com)



# Art Department



## Willow Mayor

[www.art-dept.com](http://www.art-dept.com)



# Art Department



Edda lleva puesto  
un top (Mary  
Green), una falda  
(Christian La-  
croix), un wrap  
de piel (Adrienne  
Landau) y collar  
(Lee Angel).

## Willow Mayor

[www.art-dept.com](http://www.art-dept.com)



# Art Department



Willow Mayor

[www.art-dept.com](http://www.art-dept.com)

# Art Department



Willow Mayor

[www.art-dept.com](http://www.art-dept.com)



# Art Department



Willow Mayor

[www.art-dept.com](http://www.art-dept.com)

# Art Department



Willow Mayor

[www.art-dept.com](http://www.art-dept.com)



# Art Department



Willow Mayor

[www.art-dept.com](http://www.art-dept.com)

# Art Department



Willow Mayor

[www.art-dept.com](http://www.art-dept.com)



# Art Department



Silk sleeveless top  
£150 D&G; bow  
headband with tulle veil  
£18 Beyond Retro

## Willow Mayor

[www.art-dept.com](http://www.art-dept.com)

# Art Department

Chiffon frilled dress  
£1,377 Preen; patent  
brogues £210 Church's;  
'Disco Pearl' hat £249  
Victoria Grant at  
Harrods.com

Fashion editor:  
Sarah Clark  
Hair: Rebekah Forecast  
at The Wall Group  
Make-up: Willow Mayor  
at Sarah Laird  
Model: Isabel Brismar  
Lind at Viva  
For where to buy see  
Stockists, page 324



## Willow Mayor

[www.art-dept.com](http://www.art-dept.com)



# Art Department



Silk slip £450, cotton  
silk bra £210 and silk  
shorts £460 all Miu Miu;  
canvas brogues £295  
Margaret Howell; hat with  
net veil £245 made to  
order Victoria Grant

## Willow Mayor

[www.art-dept.com](http://www.art-dept.com)

# Art Department



Silk asymmetric top £110  
Reiss.co.uk; silk organza  
knickers £45 Stella  
McCartney Lingerie;  
butterfly hair clip £15  
Johnnylovesrosie.co.uk

## Willow Mayor

[www.art-dept.com](http://www.art-dept.com)



# Art Department



Willow Mayor

[www.art-dept.com](http://www.art-dept.com)

# Art Department



Willow Mayor

[www.art-dept.com](http://www.art-dept.com)



# Art Department



Willow Mayor

[www.art-dept.com](http://www.art-dept.com)

# Art Department



Willow Mayor

[www.art-dept.com](http://www.art-dept.com)