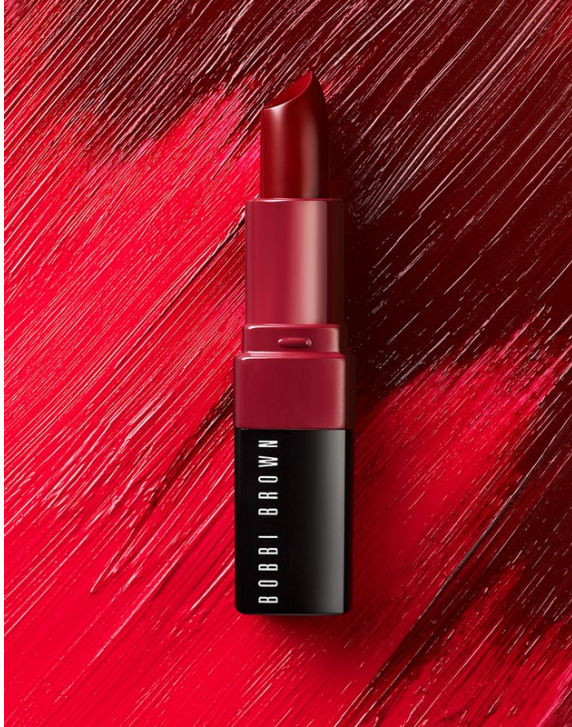


# Art Department



Michele Faro

[www.art-dept.com](http://www.art-dept.com)

# Art Department



Michele Faro

[www.art-dept.com](http://www.art-dept.com)

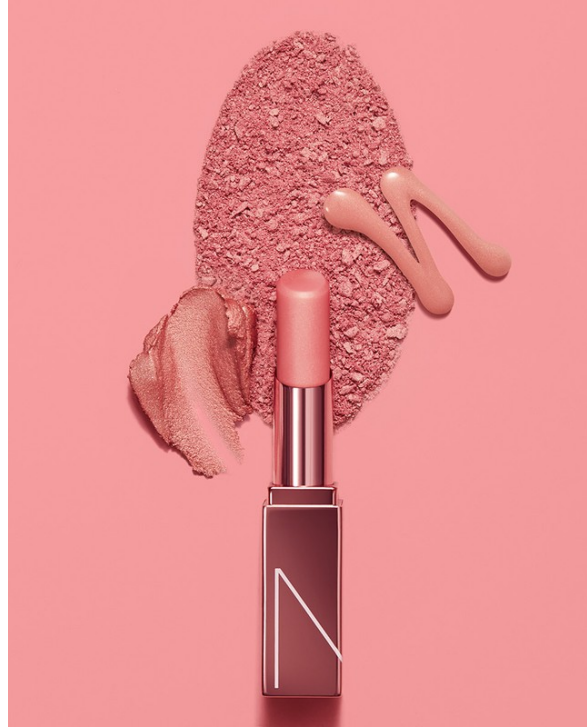
# Art Department



Michele Faro

[www.art-dept.com](http://www.art-dept.com)

# Art Department



Michele Faro

[www.art-dept.com](http://www.art-dept.com)

# Art Department



Michele Faro

[www.art-dept.com](http://www.art-dept.com)

# Art Department



Michele Faro

[www.art-dept.com](http://www.art-dept.com)

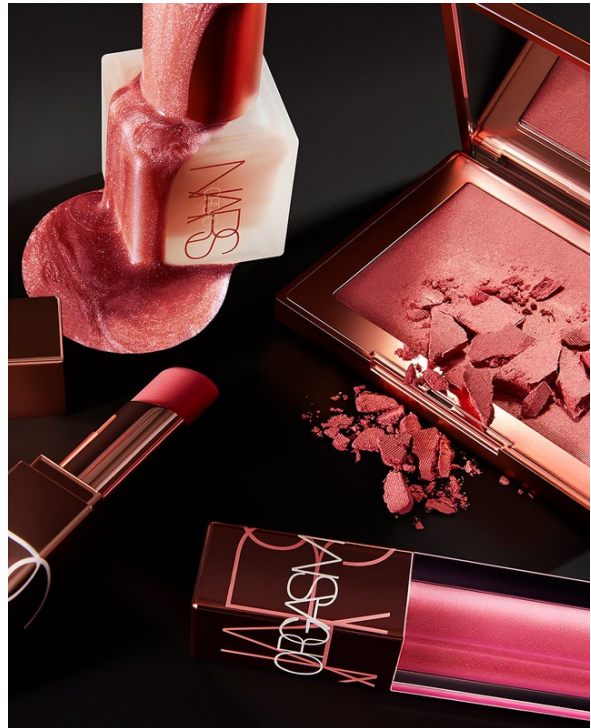
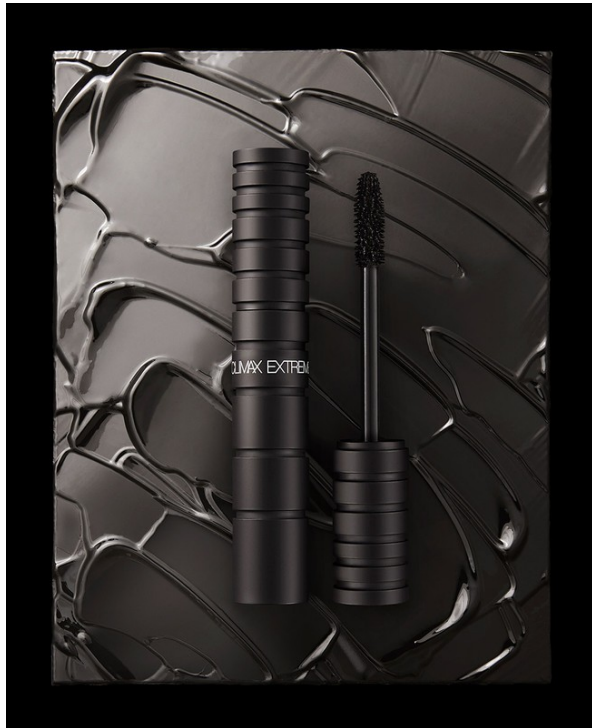
# Art Department



Michele Faro

[www.art-dept.com](http://www.art-dept.com)

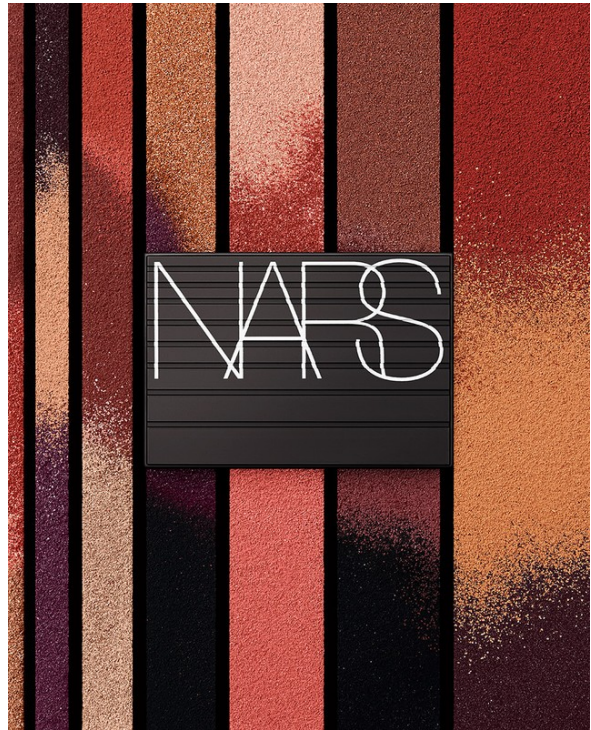
# Art Department



Michele Faro

[www.art-dept.com](http://www.art-dept.com)

# Art Department



Michele Faro

[www.art-dept.com](http://www.art-dept.com)

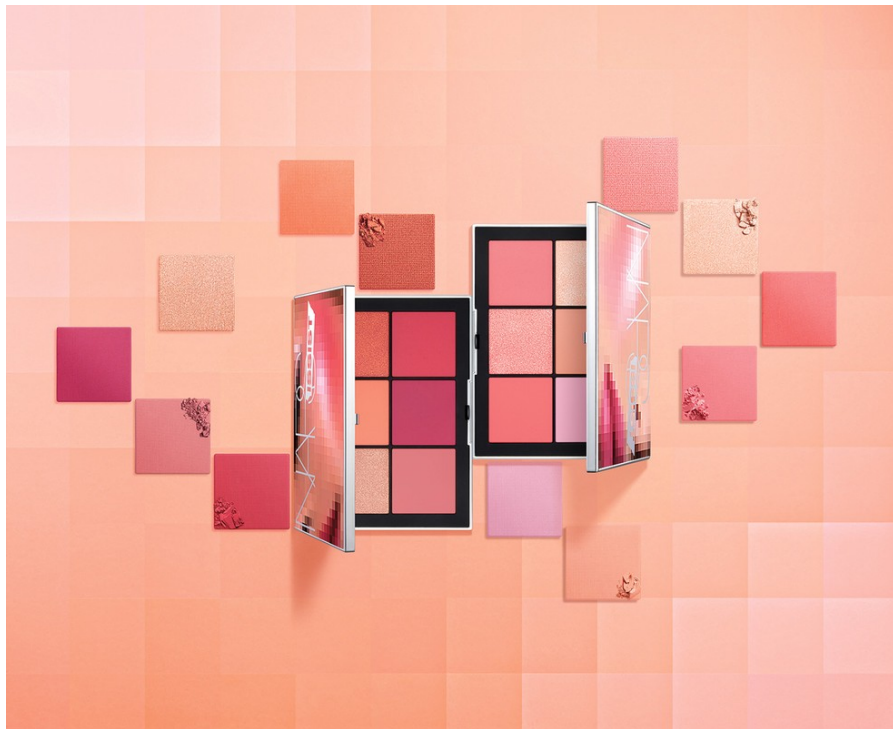
# Art Department



Michele Faro

[www.art-dept.com](http://www.art-dept.com)

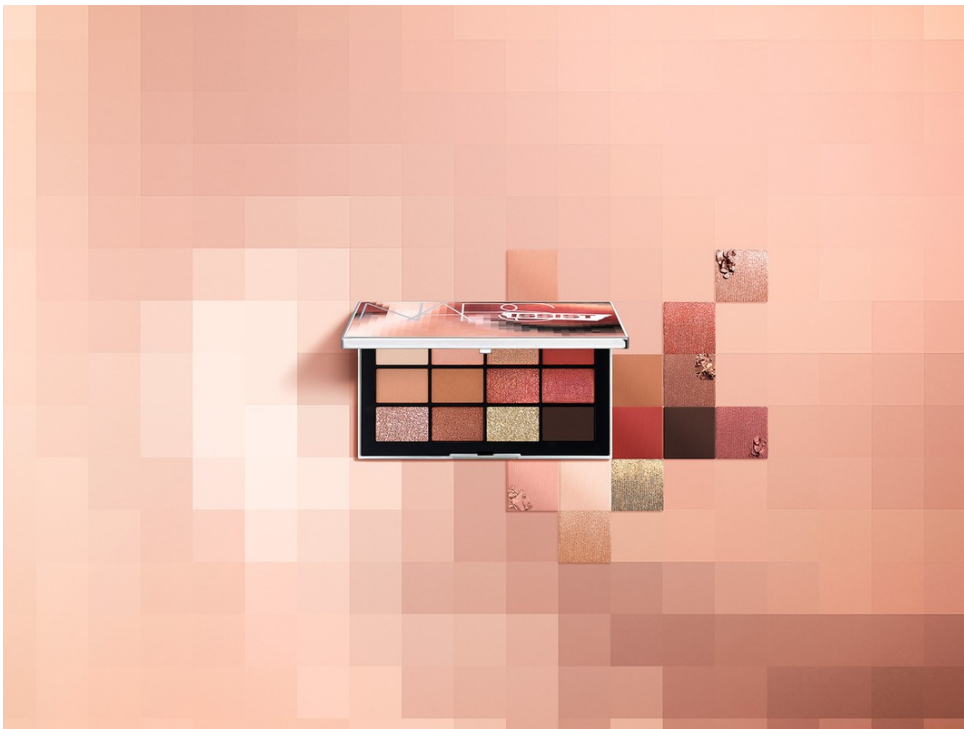
# Art Department



Michele Faro

[www.art-dept.com](http://www.art-dept.com)

# Art Department



Michele Faro

[www.art-dept.com](http://www.art-dept.com)

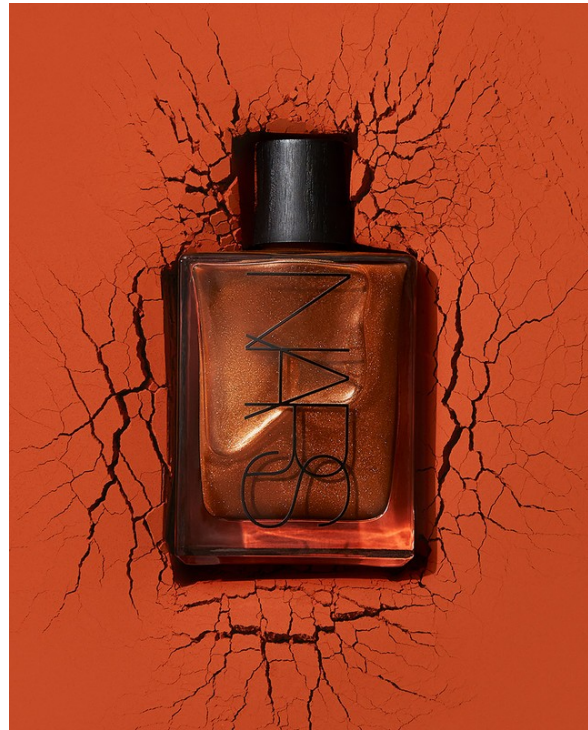
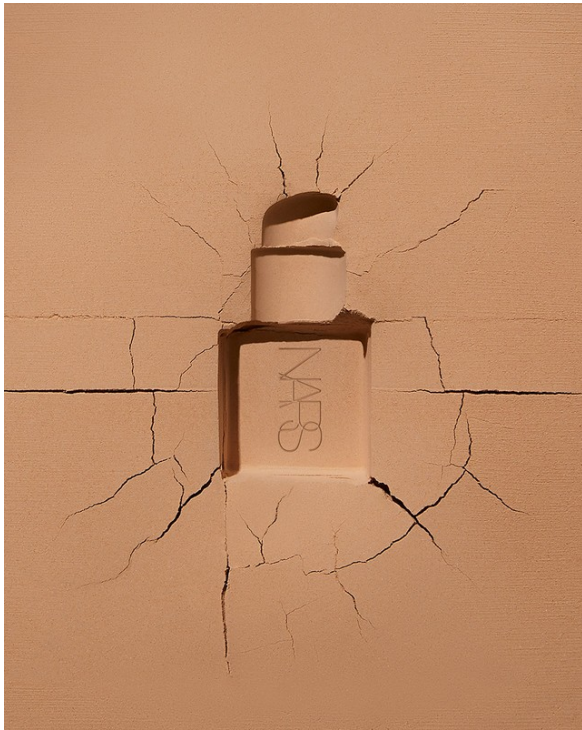
# Art Department



Michele Faro

[www.art-dept.com](http://www.art-dept.com)

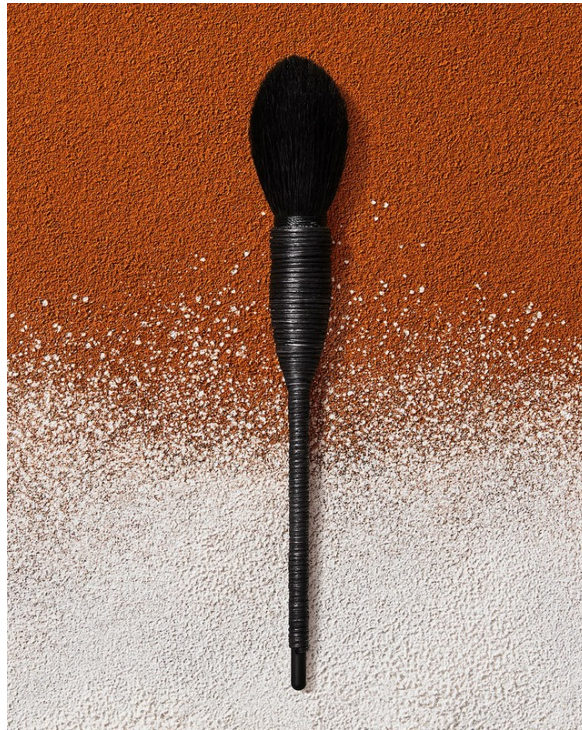
# Art Department



Michele Faro

[www.art-dept.com](http://www.art-dept.com)

# Art Department



Michele Faro

[www.art-dept.com](http://www.art-dept.com)

# Art Department



Michele Faro

[www.art-dept.com](http://www.art-dept.com)

# Art Department



Michele Faro

[www.art-dept.com](http://www.art-dept.com)

# Art Department



Michele Faro

[www.art-dept.com](http://www.art-dept.com)

# Art Department



Michele Faro

[www.art-dept.com](http://www.art-dept.com)

# Art Department



SEPHORA



## Michele Faro

[www.art-dept.com](http://www.art-dept.com)

# Art Department

SEPHORA



SEPHORA



## Michele Faro

[www.art-dept.com](http://www.art-dept.com)

# Art Department

SEPHORA

*For a*  
DEWY GLOW



GLOW LOW

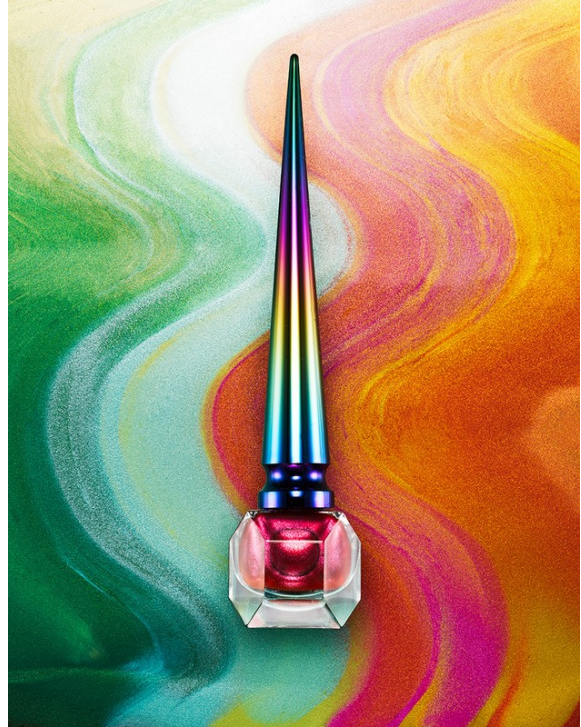
GLOW HIGH



## Michele Faro

[www.art-dept.com](http://www.art-dept.com)

# Art Department



Michele Faro

[www.art-dept.com](http://www.art-dept.com)

# Art Department



Michele Faro

[www.art-dept.com](http://www.art-dept.com)

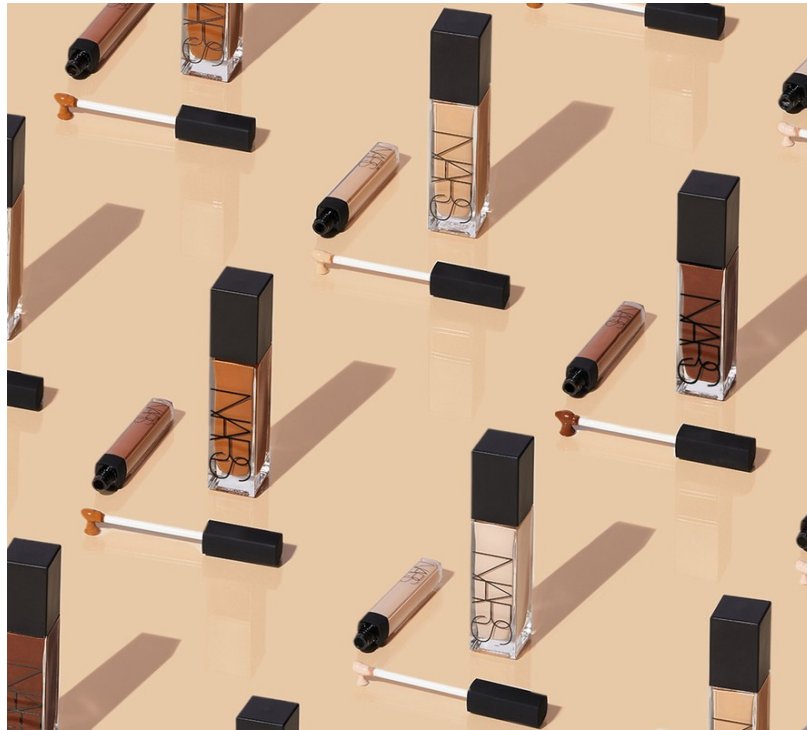
# Art Department



Michele Faro

[www.art-dept.com](http://www.art-dept.com)

# Art Department



Michele Faro

[www.art-dept.com](http://www.art-dept.com)

# Art Department



Michele Faro

[www.art-dept.com](http://www.art-dept.com)

# Art Department



Michele Faro

[www.art-dept.com](http://www.art-dept.com)

# Art Department



Michele Faro

[www.art-dept.com](http://www.art-dept.com)

# Art Department



Michele Faro

[www.art-dept.com](http://www.art-dept.com)

# Art Department



Michele Faro

[www.art-dept.com](http://www.art-dept.com)

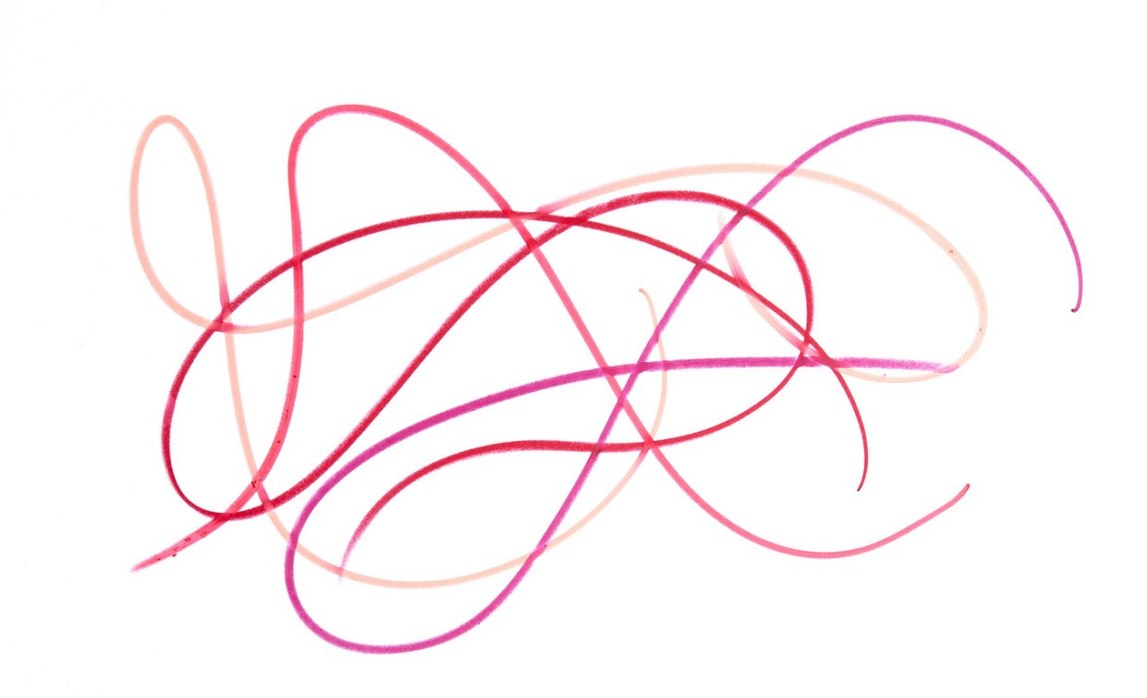
# Art Department



Michele Faro

[www.art-dept.com](http://www.art-dept.com)

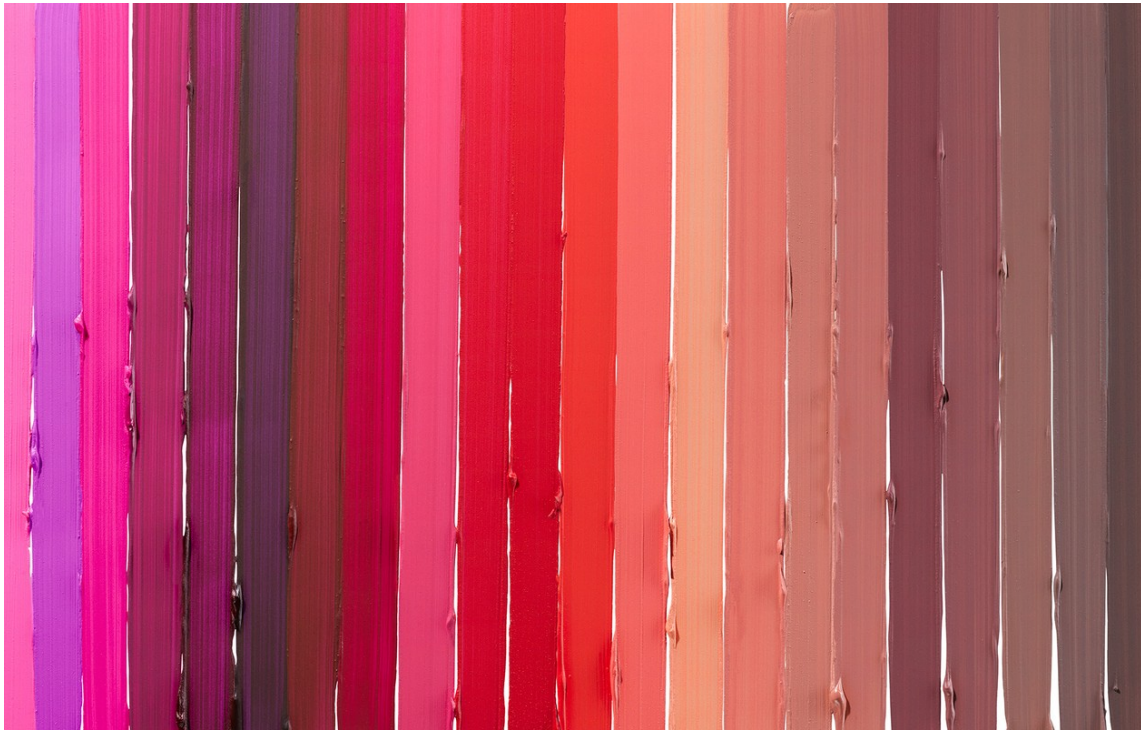
# Art Department



Michele Faro

[www.art-dept.com](http://www.art-dept.com)

# Art Department



Michele Faro

[www.art-dept.com](http://www.art-dept.com)

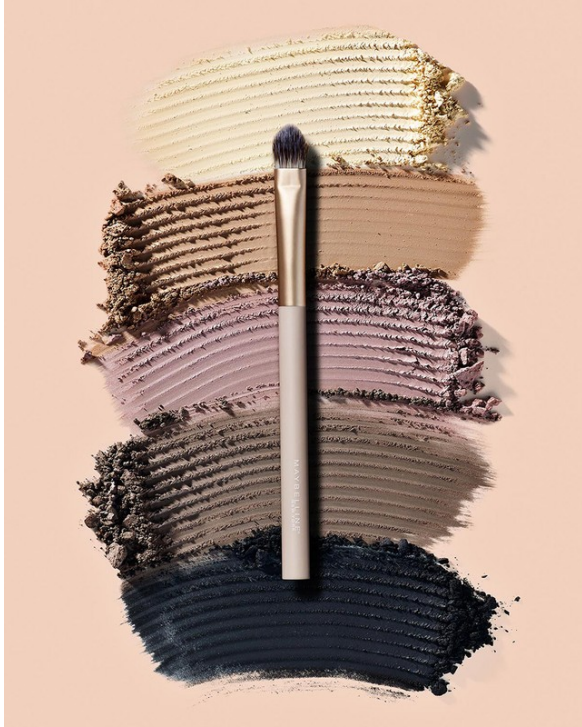
# Art Department



Michele Faro

[www.art-dept.com](http://www.art-dept.com)

# Art Department



Michele Faro

[www.art-dept.com](http://www.art-dept.com)

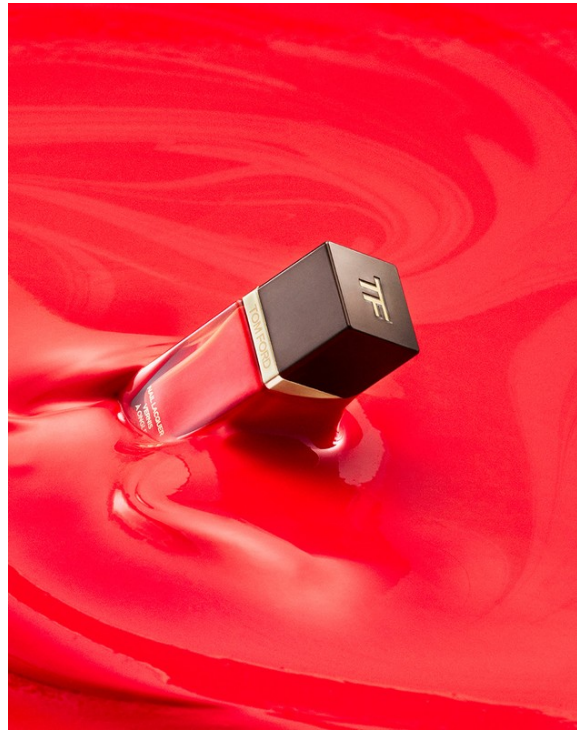
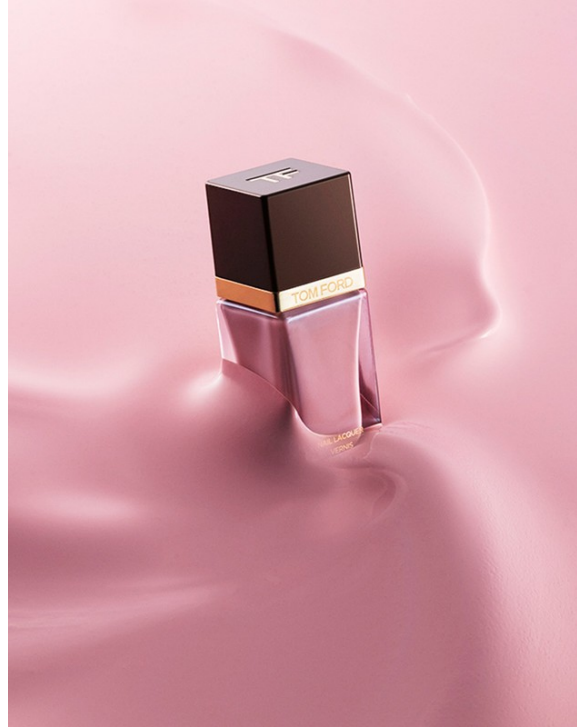
# Art Department



Michele Faro

[www.art-dept.com](http://www.art-dept.com)

# Art Department



Michele Faro

[www.art-dept.com](http://www.art-dept.com)

# Art Department



Michele Faro

[www.art-dept.com](http://www.art-dept.com)

# Art Department



Michele Faro

[www.art-dept.com](http://www.art-dept.com)

# Art Department



go **NUDE** or make a *Statement*

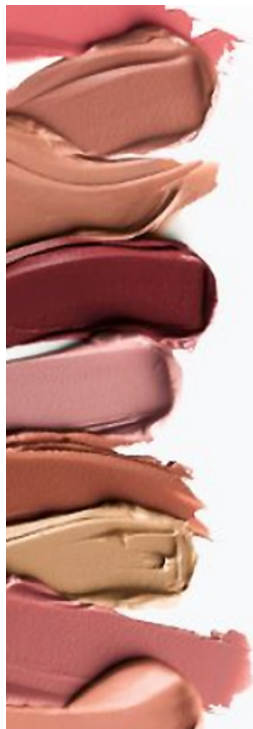
Michele Faro

[www.art-dept.com](http://www.art-dept.com)

# Art Department




go **NUDE**



**INTRODUCING  
STATEMENT LIP**

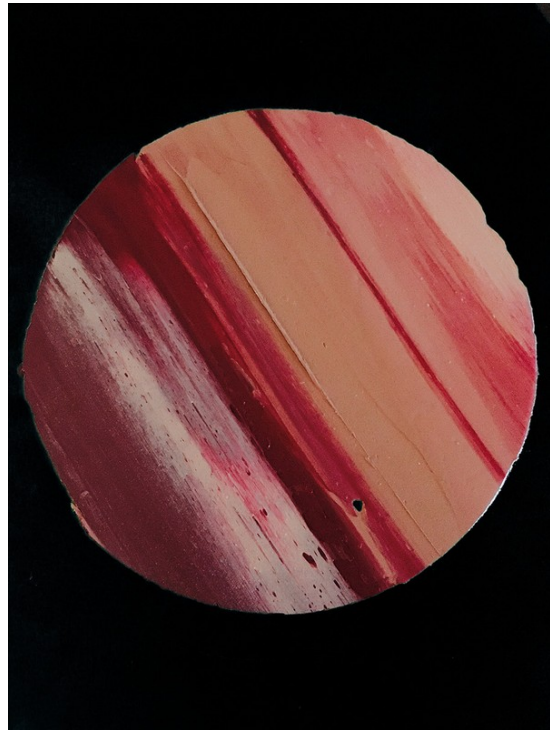
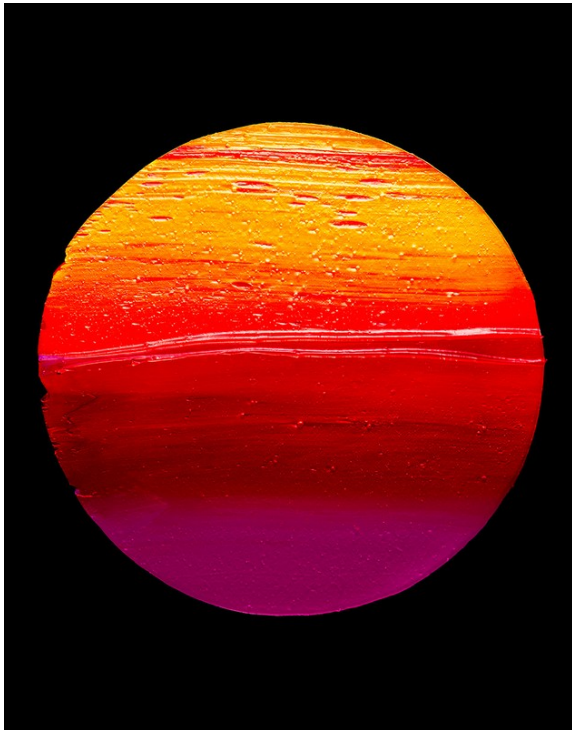
GO NUDE OR MAKE A STATEMENT 30 shades  
of matte. 30 shades of shine. Now there's a  
lipcolor to match your every mood.



Michele Faro

[www.art-dept.com](http://www.art-dept.com)

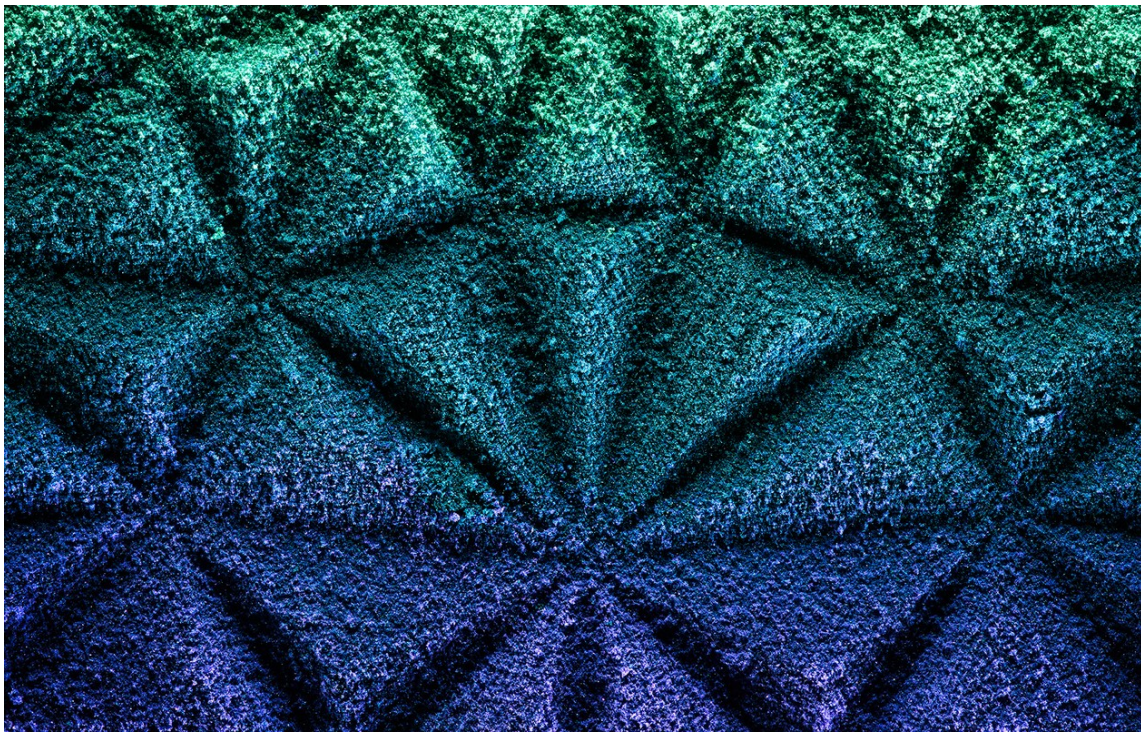
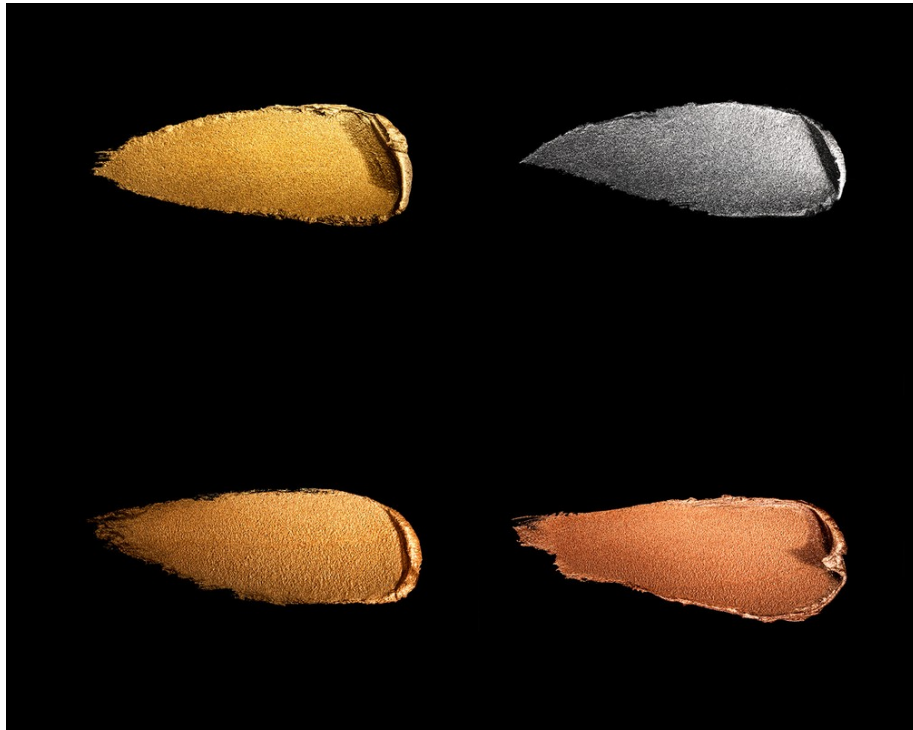
# Art Department



Michele Faro

[www.art-dept.com](http://www.art-dept.com)

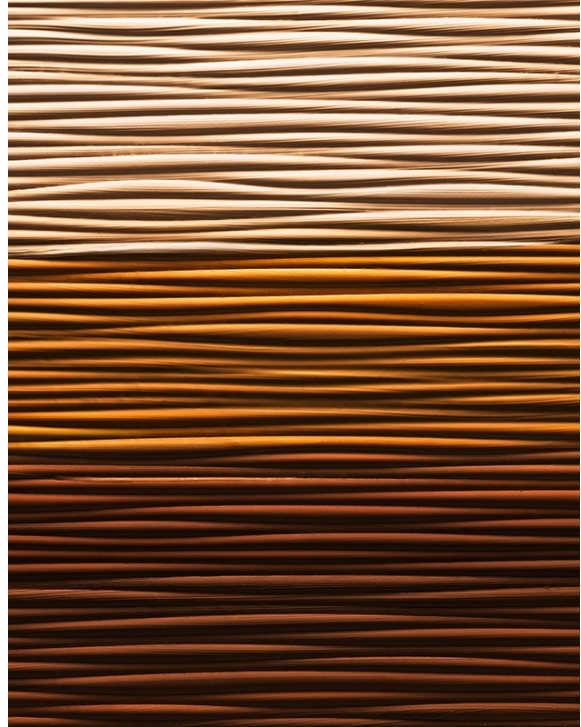
# Art Department



Michele Faro

[www.art-dept.com](http://www.art-dept.com)

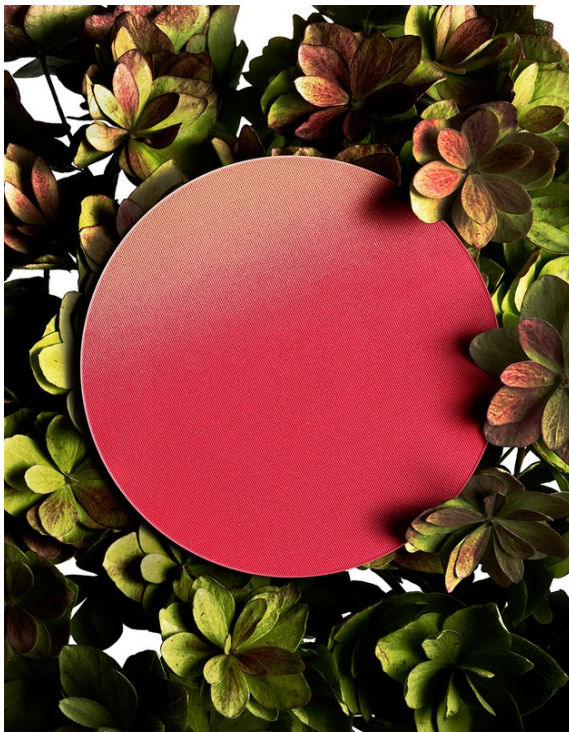
# Art Department



Michele Faro

[www.art-dept.com](http://www.art-dept.com)

# Art Department



Michele Faro

[www.art-dept.com](http://www.art-dept.com)

# Art Department



Michele Faro

[www.art-dept.com](http://www.art-dept.com)

# Art Department



Michele Faro

[www.art-dept.com](http://www.art-dept.com)

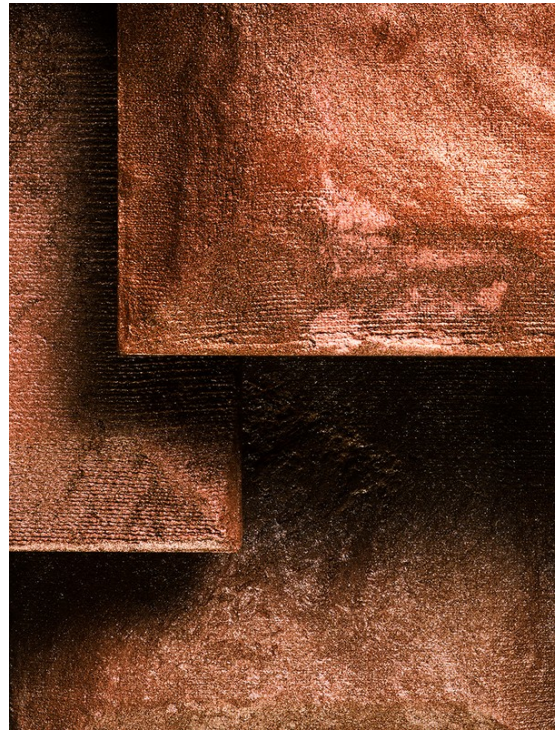
# Art Department



Michele Faro

[www.art-dept.com](http://www.art-dept.com)

# Art Department



Michele Faro

[www.art-dept.com](http://www.art-dept.com)

# Art Department



Michele Faro

[www.art-dept.com](http://www.art-dept.com)

# Art Department



Michele Faro

[www.art-dept.com](http://www.art-dept.com)

# Art Department



Michele Faro

[www.art-dept.com](http://www.art-dept.com)

# Art Department



Michele Faro

[www.art-dept.com](http://www.art-dept.com)

# Art Department



Michele Faro

[www.art-dept.com](http://www.art-dept.com)

# Art Department



Michele Faro

[www.art-dept.com](http://www.art-dept.com)

# Art Department



Michele Faro

[www.art-dept.com](http://www.art-dept.com)

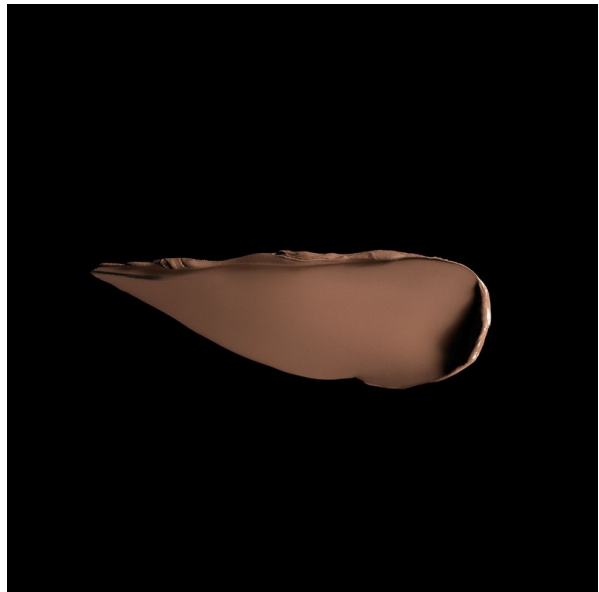
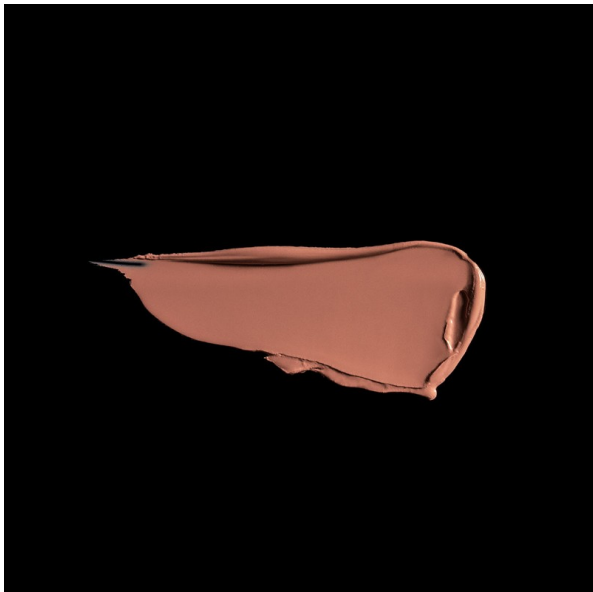
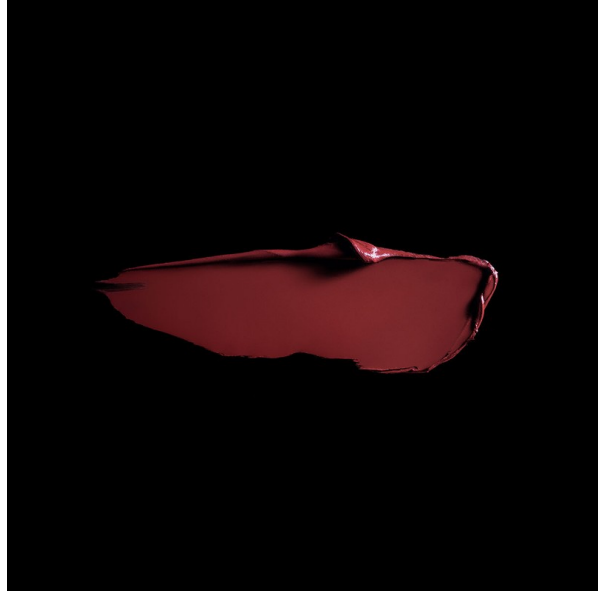
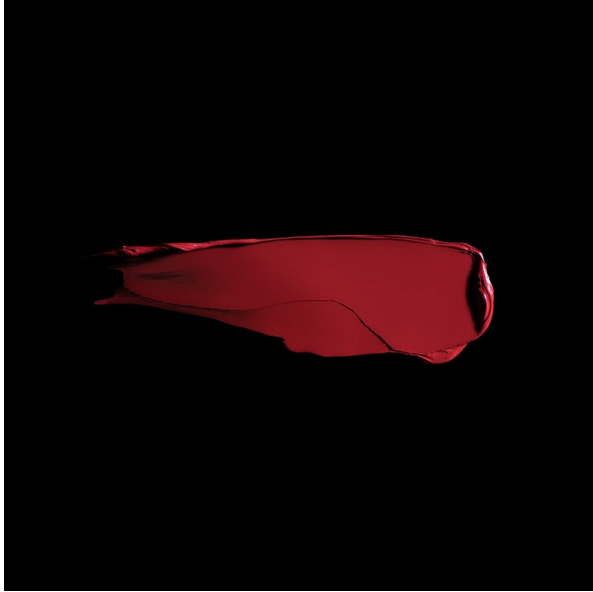
# Art Department



Michele Faro

[www.art-dept.com](http://www.art-dept.com)

# Art Department



Michele Faro

[www.art-dept.com](http://www.art-dept.com)

# Art Department



allure



*Read Our  
LIPS*

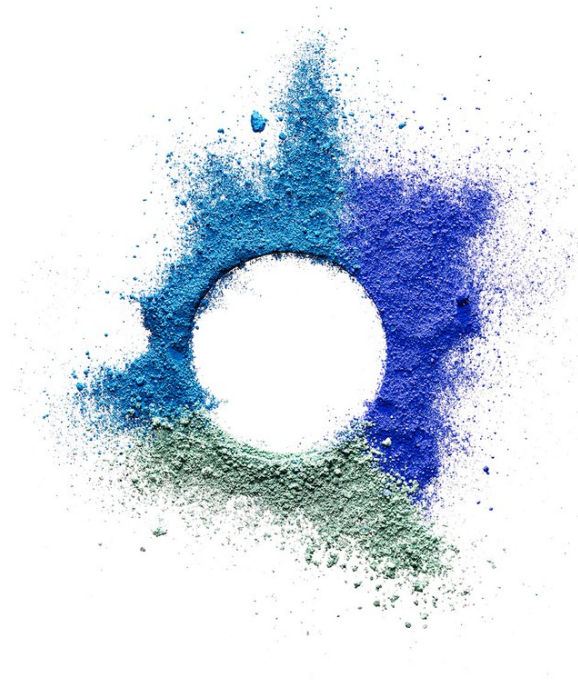
Welcome to fall, where our happy place is  
full of vampy plums, gentle nudes, baby-doll pinks...  
oh, we could go on. (And we will.)



## Michele Faro

[www.art-dept.com](http://www.art-dept.com)

# Art Department



Michele Faro

[www.art-dept.com](http://www.art-dept.com)

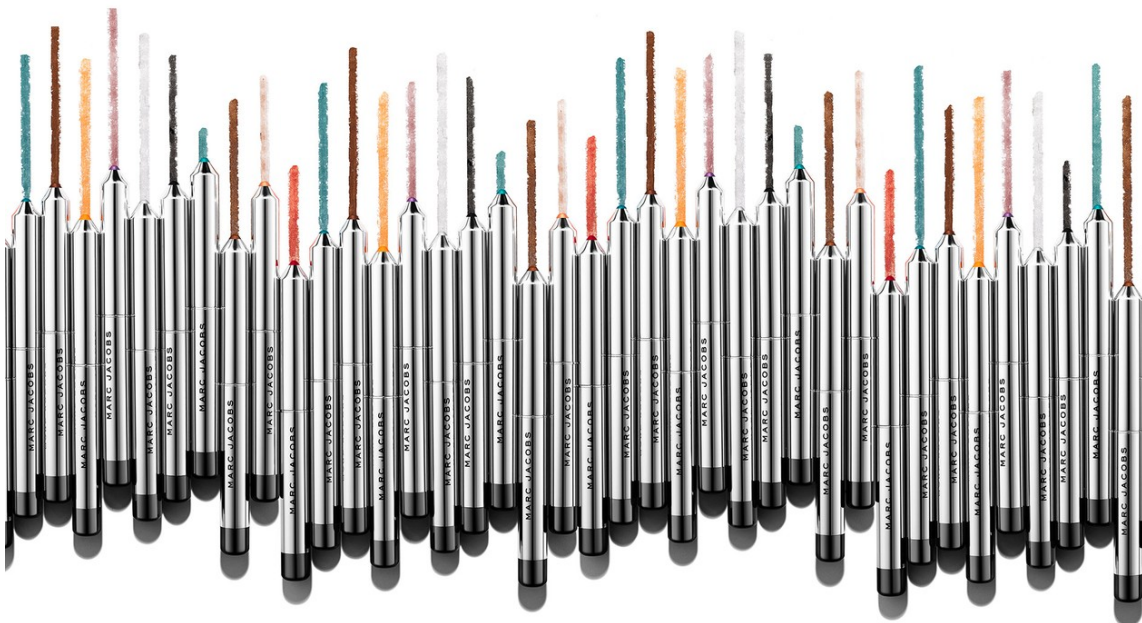
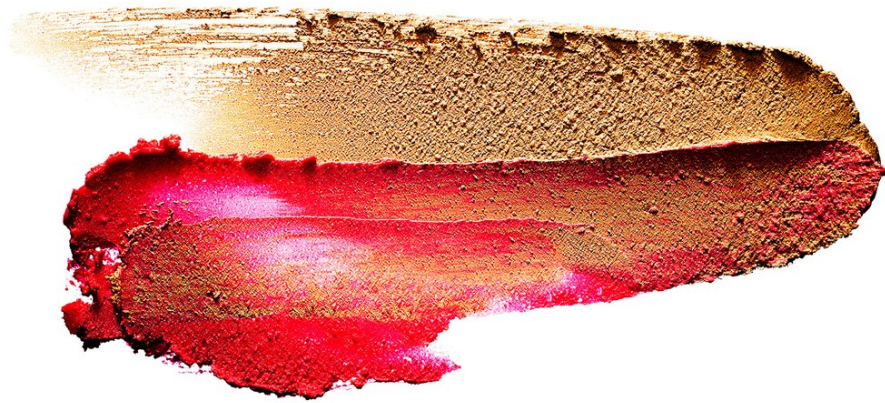
# Art Department



Michele Faro

[www.art-dept.com](http://www.art-dept.com)

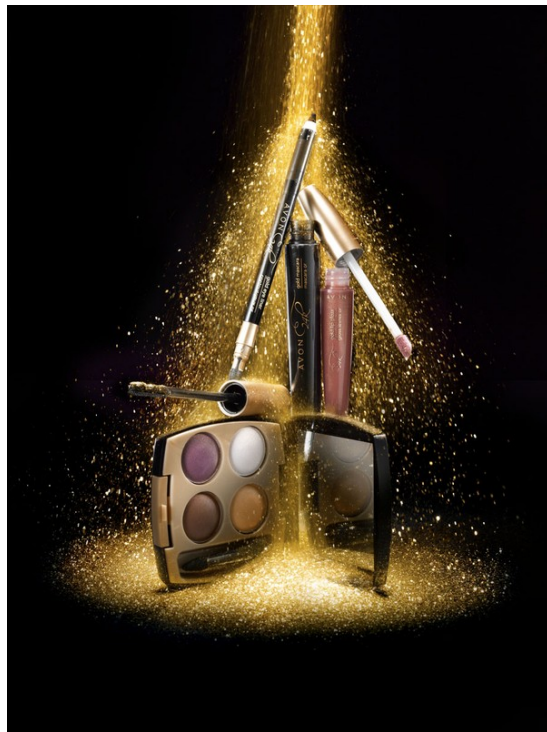
# Art Department



Michele Faro

[www.art-dept.com](http://www.art-dept.com)

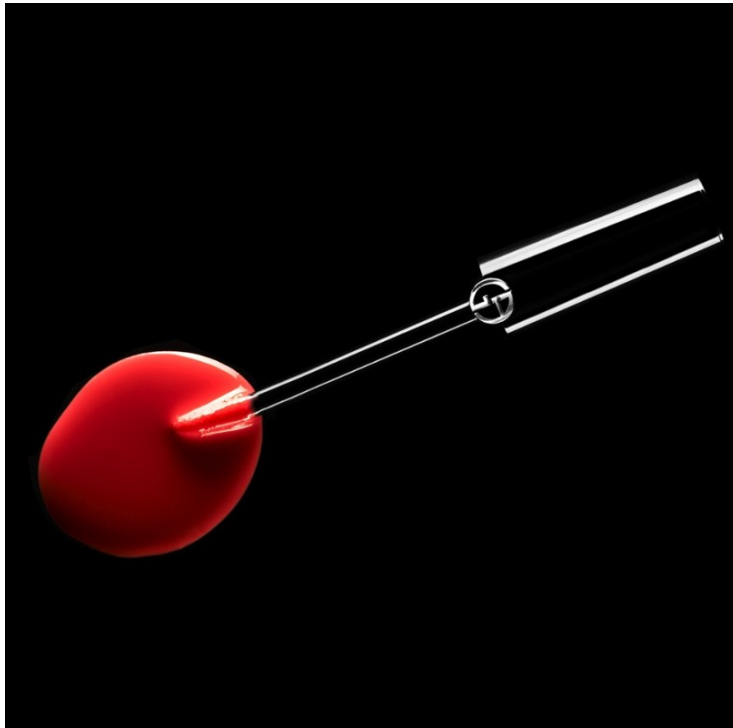
# Art Department



Michele Faro

[www.art-dept.com](http://www.art-dept.com)

# Art Department



Michele Faro

[www.art-dept.com](http://www.art-dept.com)

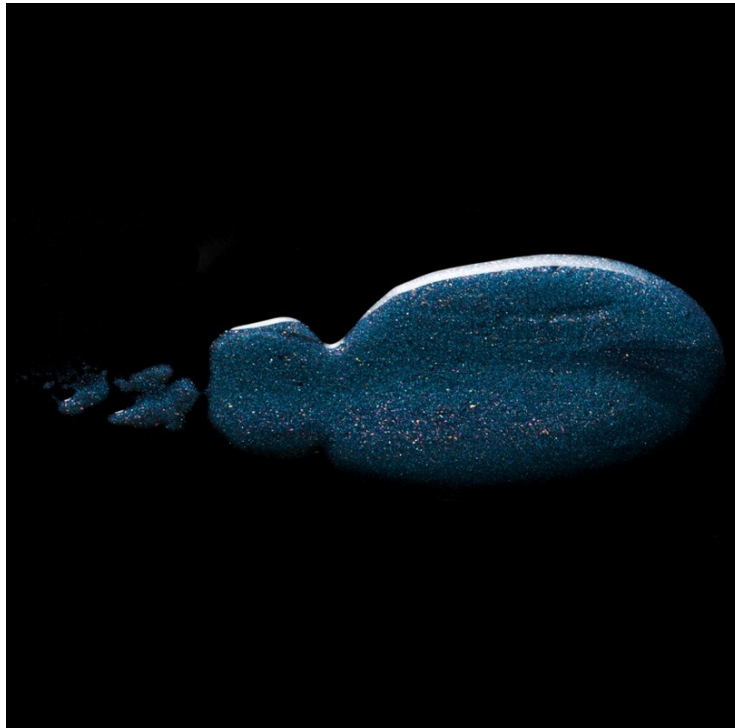
# Art Department



Michele Faro

[www.art-dept.com](http://www.art-dept.com)

# Art Department



Michele Faro

[www.art-dept.com](http://www.art-dept.com)

# Art Department



Michele Faro

[www.art-dept.com](http://www.art-dept.com)

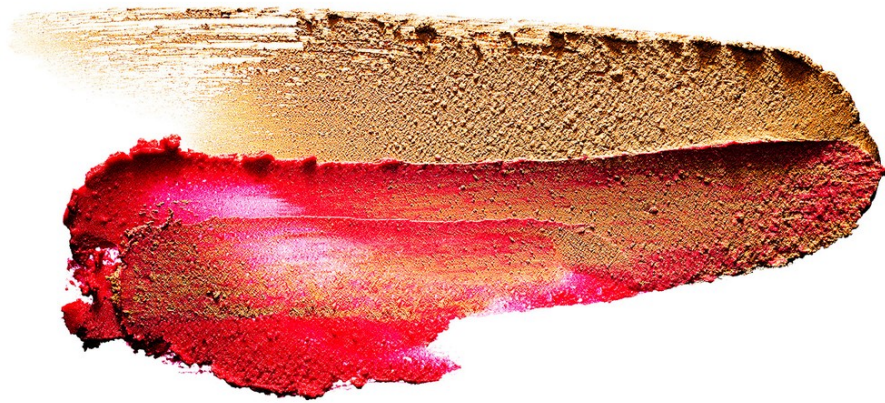
# Art Department



Michele Faro

[www.art-dept.com](http://www.art-dept.com)

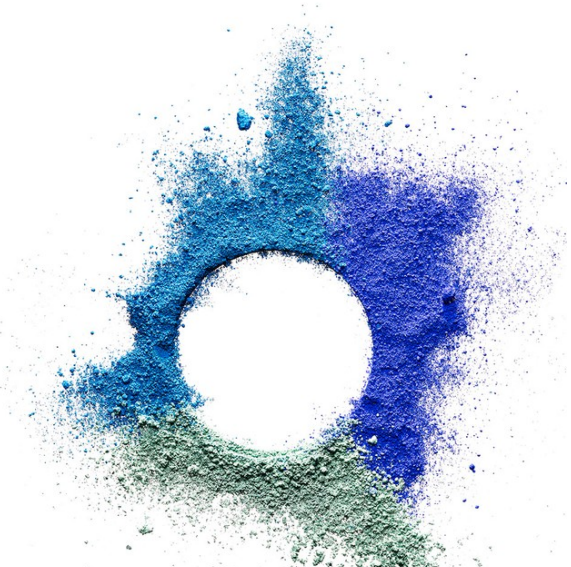
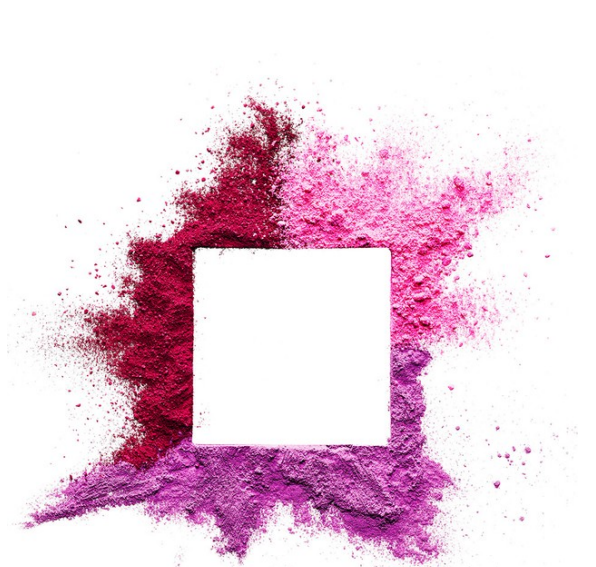
# Art Department



Michele Faro

[www.art-dept.com](http://www.art-dept.com)

# Art Department



Michele Faro

[www.art-dept.com](http://www.art-dept.com)

# Art Department



Michele Faro

[www.art-dept.com](http://www.art-dept.com)

# Art Department



Michele Faro

[www.art-dept.com](http://www.art-dept.com)

# Art Department



Michele Faro

[www.art-dept.com](http://www.art-dept.com)

# Art Department



Michele Faro

[www.art-dept.com](http://www.art-dept.com)

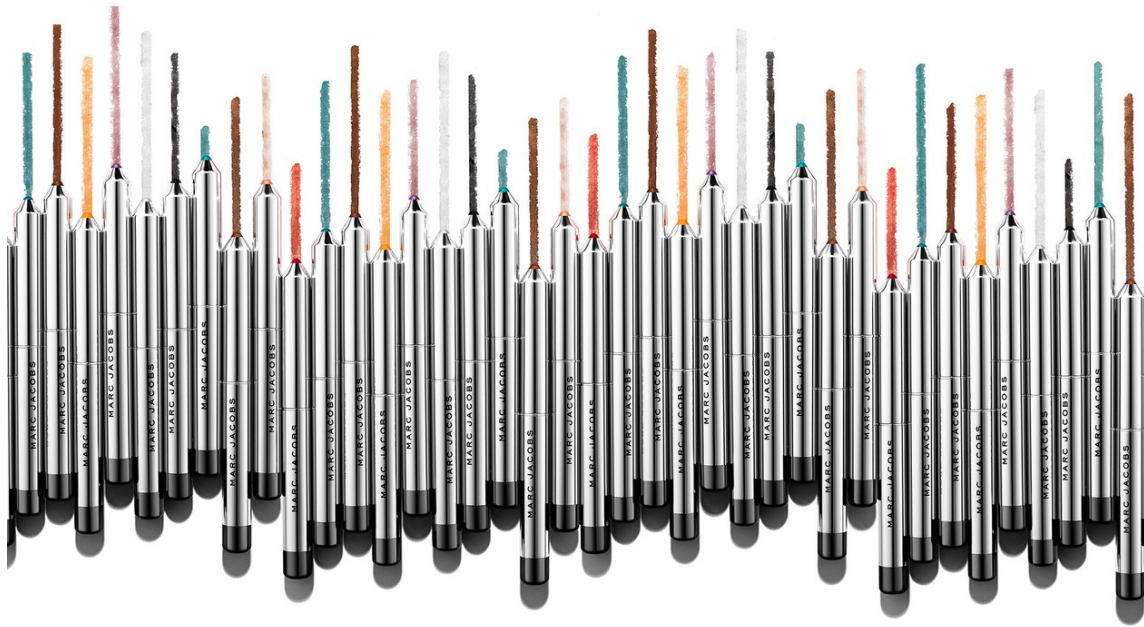
# Art Department



Michele Faro

[www.art-dept.com](http://www.art-dept.com)

# Art Department



Michele Faro

[www.art-dept.com](http://www.art-dept.com)

# Art Department



Michele Faro

[www.art-dept.com](http://www.art-dept.com)

# Art Department



Michele Faro

[www.art-dept.com](http://www.art-dept.com)

# Art Department



Michele Faro

[www.art-dept.com](http://www.art-dept.com)

# Art Department



Michele Faro

[www.art-dept.com](http://www.art-dept.com)

# Art Department



Michele Faro

[www.art-dept.com](http://www.art-dept.com)

# Art Department



Michele Faro

[www.art-dept.com](http://www.art-dept.com)

# Art Department

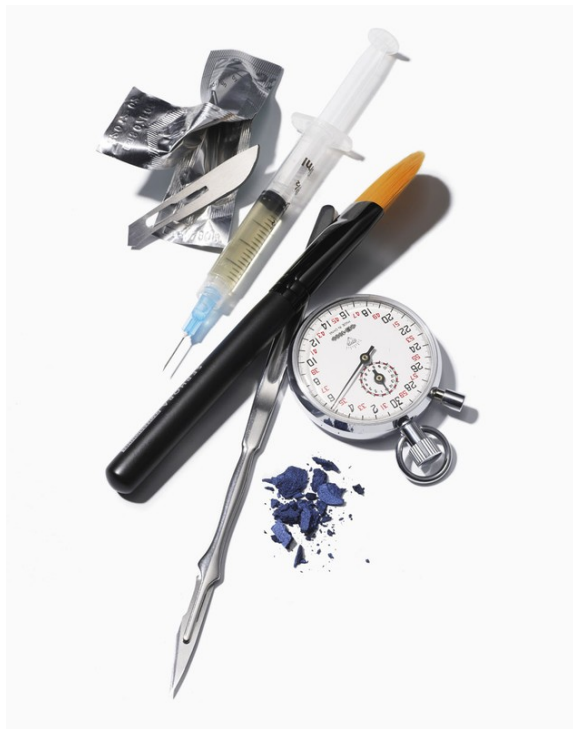
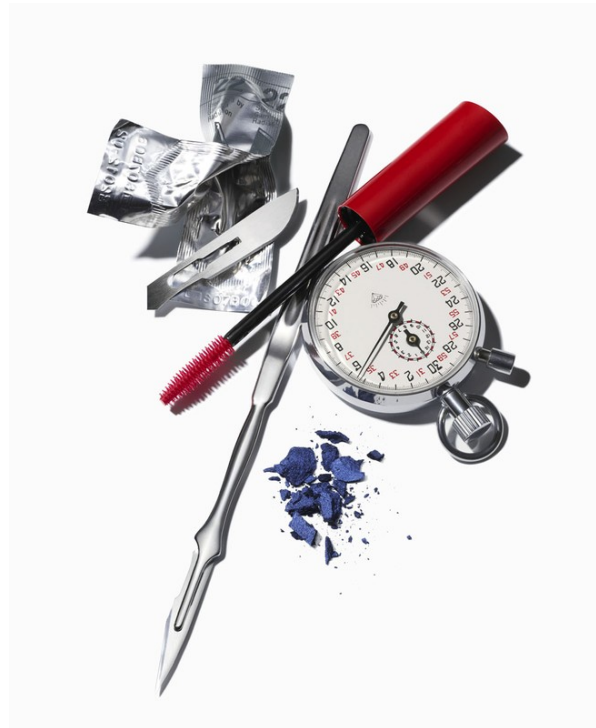
first, we need to know which foundation you prefer



# Michele Faro

www.art-dept.com

# Art Department



# Michele Faro

www.art-dept.com

# Art Department

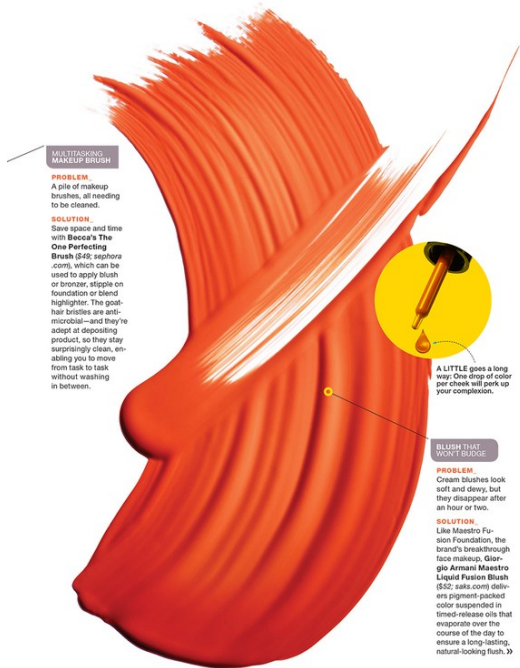


#### CREAM SHADOW FOR EYES AGES 40+

**PROBLEM**  
You like the dewy finish of cream shadow but not the inevitable creases.

**SOLUTION**  
All creams are not created equal. The oil-absorbing ingredients in Neutrogena Cream Proof Eye Shadow SR (drugstore) give it primer-like properties that extend wear and really do keep color smooth for hours.

80 [more.com](http://more.com) | APRIL 2018



#### MULTITASKING MAKEUP BRUSH

**PROBLEM**  
A pile of makeup brushes, all needing to be cleaned.

**SOLUTION**  
Save space and time with Becca's The One Perfecting Brush (\$35; [sephora.com](http://sephora.com)), which can be used to apply blush or bronzer, stipple on foundation or blend highlighter. The goat-hair bristles are antimicrobial—and they're adept at depositing product, so they stay surprisingly clean, enabling you to move from task to task without washing in between.

A LITTLE goes a long way. One drop of color per cheek will perk up your complexion.

#### BLUSH THAT WON'T BUDGE

**PROBLEM**  
Cream blushes look soft and dewy, but they disappear after an hour or two.

**SOLUTION**  
Like Maestro Fusion Foundation, the brand's breakthrough face makeup, Giorgio Armani Maestro Liquid Fusion Blush (\$52; [saks.com](http://saks.com)) delivers pigment-packed color suspended in timed-release oils that evaporate over the course of the day to ensure a long-lasting, natural-looking flush. \$9

APRIL 2018 | [more.com](http://more.com) 75

## TIP 5

Did you know: Skimping on zzz's can increase aging because when you sleep your body repairs skin cells. Get at least 8 hours of beauty sleep.



NEW! ORIGINS STARTING OVER™ AGE-ERASING MOISTURIZER WITH MIMOSA  
A helps improve the appearance of lines and wrinkles and rebuilds natural collagen. 1.7 oz. Weight 481.77 g, 542 each.

# Michele Faro

[www.art-dept.com](http://www.art-dept.com)

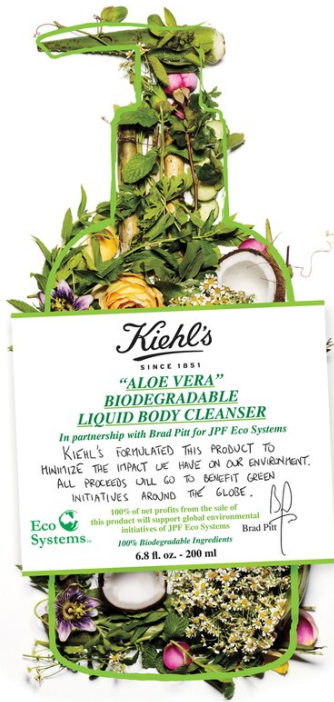
# Art Department



Michele Faro

[www.art-dept.com](http://www.art-dept.com)

# Art Department



Michele Faro

[www.art-dept.com](http://www.art-dept.com)

# Art Department



**First, choose the right Cleanser**

**The Combination Skin**  
If your face is pretty balanced, with a little oily or dry spell now and then, you have combination skin (which, by the way, is as close to "normal" as it gets). The trick is to wash with a soap-free cleanser that isn't too moisturizing or too drying, either once a day (at night, when most people's skin is dirtiest) or twice (if necessary). At the top of dermatologists' lists: (1) **ACQUA11 CLEANSER**, \$11, drugstore.com, and (2) **CELESTIL DAILY FACIAL CLEANSER**, \$11, drugstore.com, because they simultaneously clean and nourish, and are less likely to irritate skin.

**The Oily or Cleave-Prone Skin**  
When your skin often shines shortly after you cleanse it, go with an oil-free wash that purifies pores but doesn't strip away all of the natural oils (which only encourages glands to produce more). Lisa Arian, M.D., a New York City dermatologist, likes to use (1) **LAO FOAMING FACE WASH**, \$4, drugstore.com. If you get breakouts, experts suggest a cleanser with salicylic acid, like (2) **NEUTROGENA ACNE-FREE SKIN WASH**, \$5.50, drugstore.com, which sloughs off dead skin and unclogs pores. Pregnant women, however, should avoid salicylic acid as a conservative measure. Instead, opt for a product with alpha hydroxy acids, like lactic or glycolic. Try M.D. **FORTÉ FACIAL CLEANSER III**, \$27, skinincart.com.

**The Sensitive Skin**  
Anytime your skin tends to come red and angry (whether for the most obvious reasons—"stinging" scrubs, water, hot sun, and products with fragrances or lots of alpha hydroxy acids can irritate skin sensitivity," Kerl notes. He build your routine with a mild cleanser with soothing ingredients. Her favorite: (1) **AVENUE ULTRA-CALMING FOAMING CLEANSER**, \$7, drugstore.com. It contains feverfew, an herb that tempers redness and irritation.

**The Dry Skin**  
Your epidermis has a balance of oil and water, explains Linder. When that's thrown out of whack, skin gets dry and sheds off unevenly in flakes instead of light, imperceptible layers. To raise moisture levels, wash only at night to remove makeup and debris, and just rinse with water in the morning, Kerl says. Look for highly emollient, creamy products, such as (1) **BOVE BEAUTY MOISTURE FOAMING FACIAL CLEANSER**, \$5, drugstore.com, or cleansing oils, like (2) **SHI YUMERA CLEANSING BEAUTY OIL**, \$19, sephora.com, a rich wash that removes dirt and waterproof makeup and contains green tea to help protect skin.

**Then, Moisturize and protect**

**The Oily Skin**  
Experts recommend using an oil-free moisturizer that has SPF every day. Lisa Dorfman, M.D., associate clinical professor at Yale School of Medicine in New Haven, Connecticut, suggests this approach: Apply (1) **NEUTROGENA ULTRA-SHEER DRY-TOUCH SPF 25**, \$10, drugstore.com, and then a sweep of mineral-based powder, like **BAKES ESSENTIALS BAKED MINERAL SPF 15 FOUNDATION**, \$25, bareminerals.com. "I love this combination," she says. "The moisturizer contains Helioxy, which provides solid protection from UVA rays, and the mineral makeup prevents shine and defers aging."

**The Dry Skin**  
A rich-day cream will help reintroduce some moisture. Linder advises reading product labels to look for the most effective hydrating ingredients. They include glycerin, hyaluronic acid (also listed as sodium hyaluronate), urea, honey, vitamin E, rosehip seed oil, borage oil, and lactic acid. Sun protection is also key, as even winter rays can dry skin (not to mention cause skin cancer and premature aging). Try (1) **BOVE BEAUTY MOISTURE DAY CREAM SPF 15**, \$7.50, drugstore.com. Its thick formula contains glycerin and lactic acid, an excellent omega-3 fatty acid. Apply it right after cleansing or showering, while your skin is still damp, to seal in the water.

**The Sensitive Skin**  
It may seem like a tall—and tricky—order to prevent irritating while also moisturizing and protecting skin from the sun. But with the right lotion, it can be done. Kerl and Linder suggest applying (1) **ELDERBERRY BLENDED BELLY DAILY PERFECTING LOTION**, \$15, drugstore.com. Its extra-grade formula contains licochalcone, a licorice extract to help soothe skin, and the oil-free fluid's faint green tint color-corrects and blanches blemishes.

**The Combination Skin**  
Fairly balanced skin (not too dry or too oily) calls for a daily moisturizer that's equally well-balanced (not too light or too heavy). And you also need to include sun protection. Like many skin experts, Newburger chooses moisturizers formulated with Helioxy (found in Neutrogena and Avene products) or Mexoryl (found in L'Oréal's goods) because these ingredients prevent sunscreens from breaking down during the day. An all-around favorite: (1) **LAO MOISTURE-BOOSTING CREAM WITH SPF 15**, \$29, sephora.com. It has Mexoryl and a level of SPF sufficient for daily use, and it feels nice on the skin and layers well under makeup.

Michele Faro

www.art-dept.com

# Art Department



Michele Faro

www.art-dept.com

# Art Department

## Pack Your Bags, Ladies!

Here's the beauty loot our editors are stuffing in their purses this season. Hmm: What will *you* carry?

Photographs by Daniel Lindh

**IF YOU'RE FEELING GIRLY**  
Then carry: A striped (and sequined!) shoulder bag. And fill it with: Pastel makeup, little brushes (because you can always use more blush), and sheer polishes to clash or match your purse—we endorse both.

*Clutchies from top left: CHANEL bag, \$51; eye shadow palette, \$6; TOM FORD lip color, \$40; AERIN makeup brushes, \$10 for set. SEE sunglasses, \$98; LANCÔME lip gloss, \$27; TORY BURCH wallet, \$40; MISS WON fragrance, \$70; ENZO nail polish, \$8.30 each; PINK & JOE lotion, \$20. See Glamour Shopper for more information.*

302  
glamour.com

**IF YOU'RE FEELING EDDY**  
Then carry: An oversize clutch with hardware. And fill it with: Sultry perfume, a rich wine-colored lipstick, and smoky-eye essentials—like the later the night, the cooler your eyes. Go for it!

*Clutchies from top right: ALEXANDER WANG bag, \$650; MAC lipstick, \$11.50; L'ORÉAL USA barette, \$25; PHILIP B hairpiece, \$10; KATY HANSEN nail polish, \$9; SUPREMA COLLECTION sweater, \$75 for set; MAKEUP FOR EVER pigment, \$10; L'ORÉAL eyeliner, \$10; ELIZABETH AND JAMES perfume, \$10; CELIAHARRIS cell phone case, \$30; CHANEL eye shadow, \$20. See Glamour Shopper for more information.*

303  
glamour.com

**IF YOU'RE FEELING CLASSIC**  
Then carry: A bright structured bag. And fill it with: Shimmer shadow (do a bit on lids for a midday wake-up), a chic compact, and always, always a perfect red lipstick.

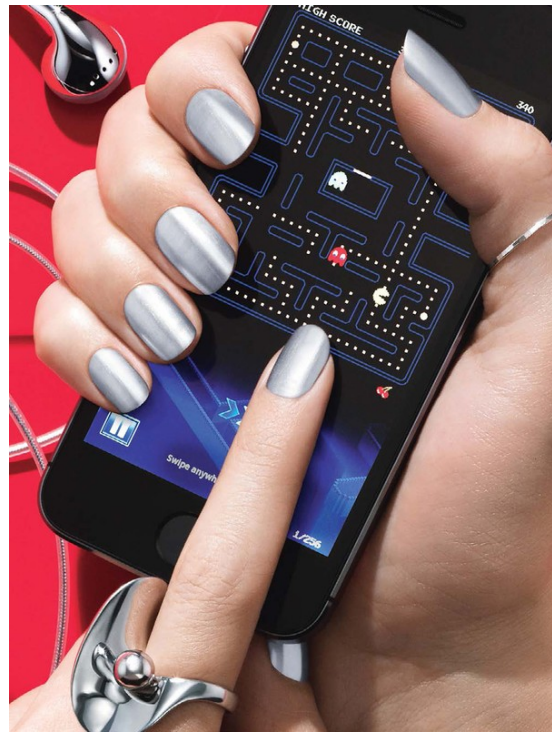
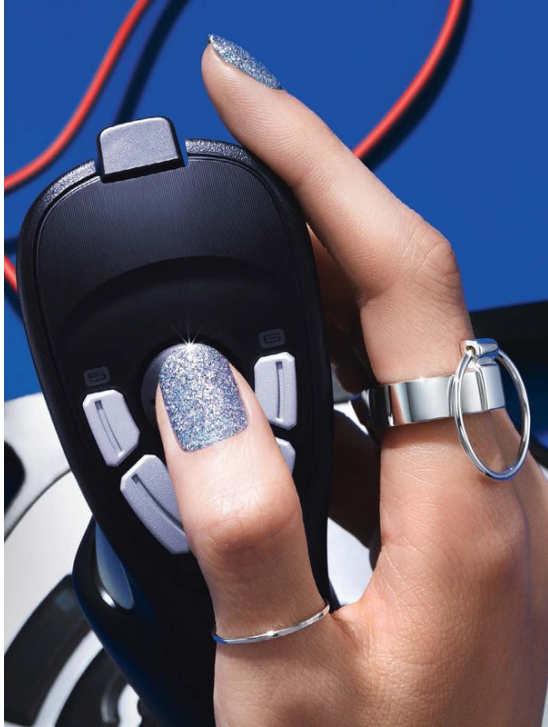
*Clutchies from top left: LIPSTICK QUEEN lipstick, \$10; SMYTHSON notebook, \$100; HUGO BOSS fragrance, \$110; COVERGIRL nail polish, \$8.30 each; ANKIN cream, \$12; SHISEIDO eye shadow, \$15; MICHAEL MICHAEL KORE bag, \$60; GIVENCHY powder, \$30. See Glamour Shopper for more information.*

304  
glamour.com

Michele Faro

www.art-dept.com

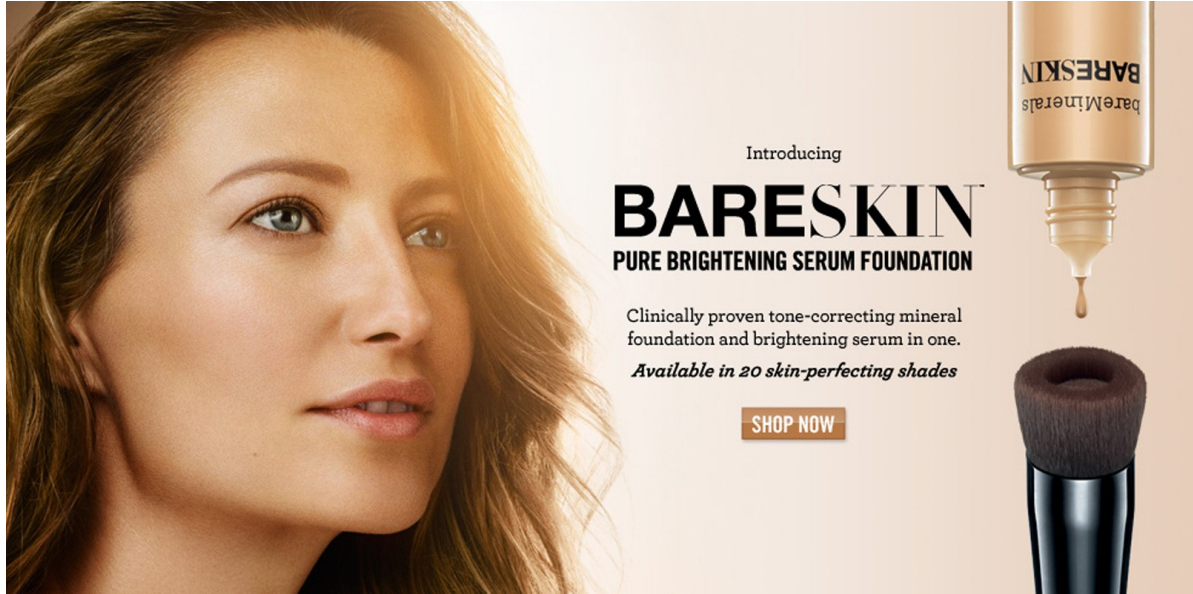
# Art Department



Michele Faro

[www.art-dept.com](http://www.art-dept.com)

# Art Department



Michele Faro

[www.art-dept.com](http://www.art-dept.com)