

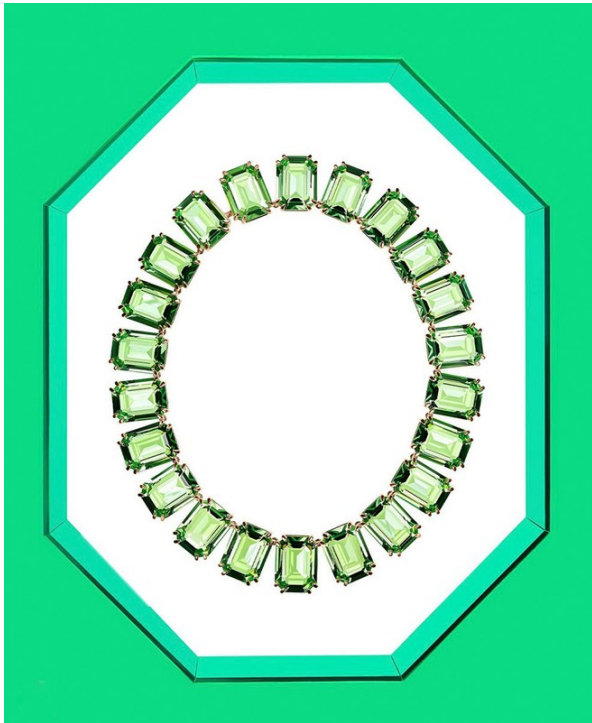
# Art Department



Peter Tran

[www.art-dept.com](http://www.art-dept.com)

# Art Department

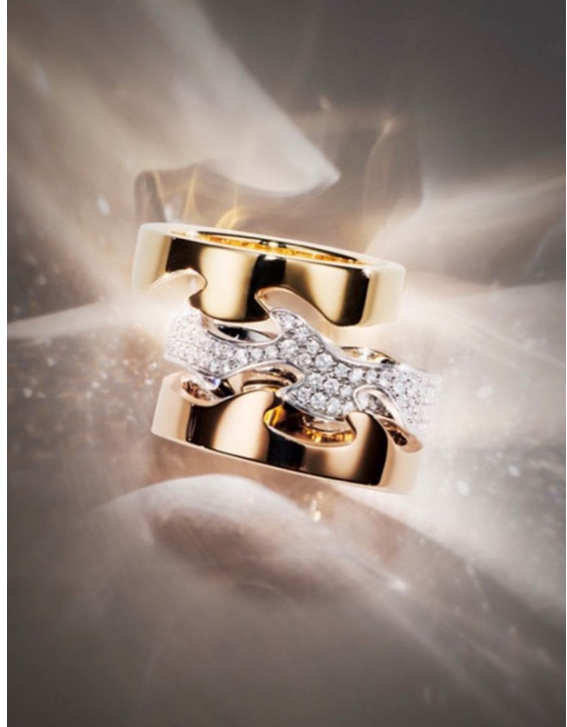


Peter Tran

[www.art-dept.com](http://www.art-dept.com)



# Art Department



Peter Tran

[www.art-dept.com](http://www.art-dept.com)

# Art Department

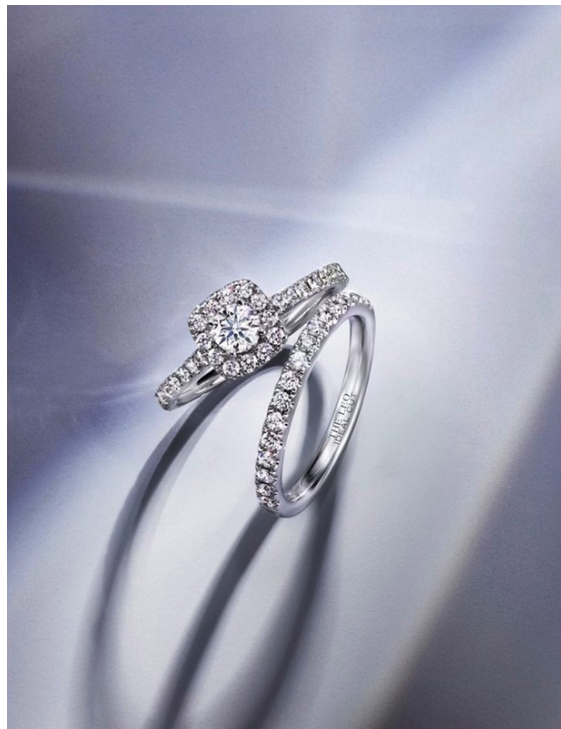


Peter Tran

[www.art-dept.com](http://www.art-dept.com)



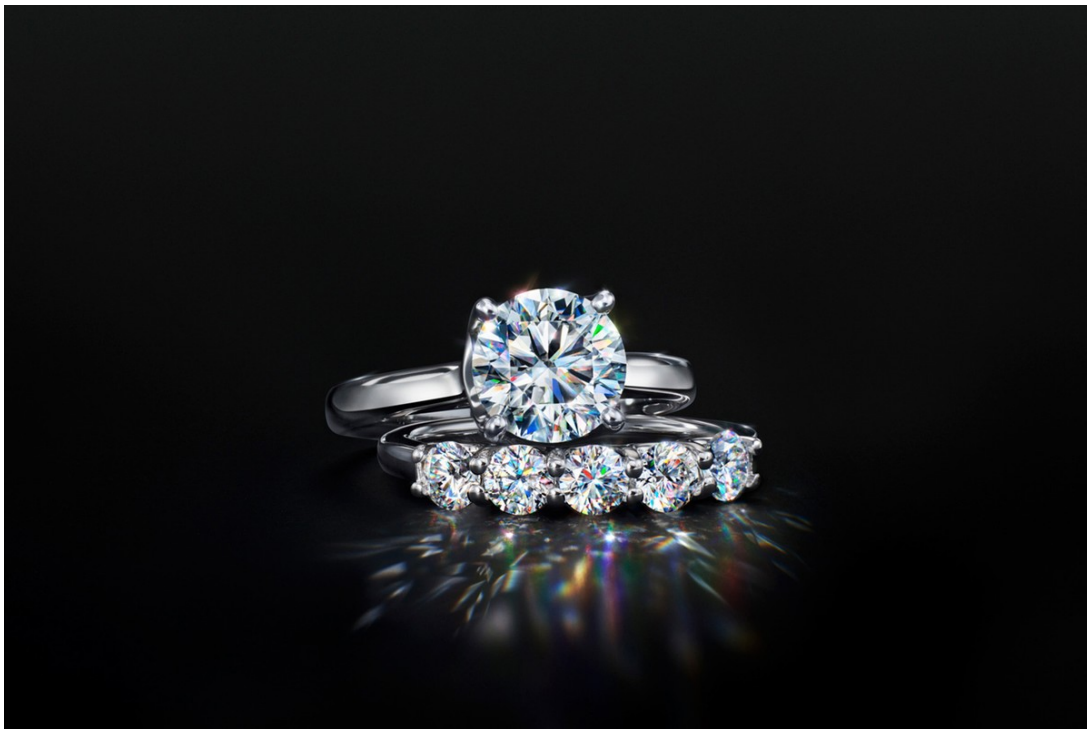
# Art Department



Peter Tran

[www.art-dept.com](http://www.art-dept.com)

# Art Department

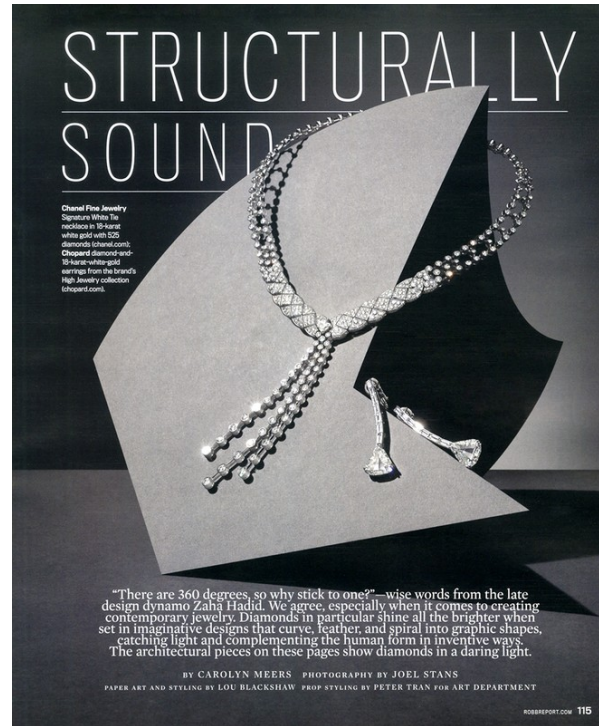


Peter Tran

[www.art-dept.com](http://www.art-dept.com)



# Art Department



Peter Tran

www.art-dept.com

# Art Department



Peter Tran

[www.art-dept.com](http://www.art-dept.com)



# Art Department

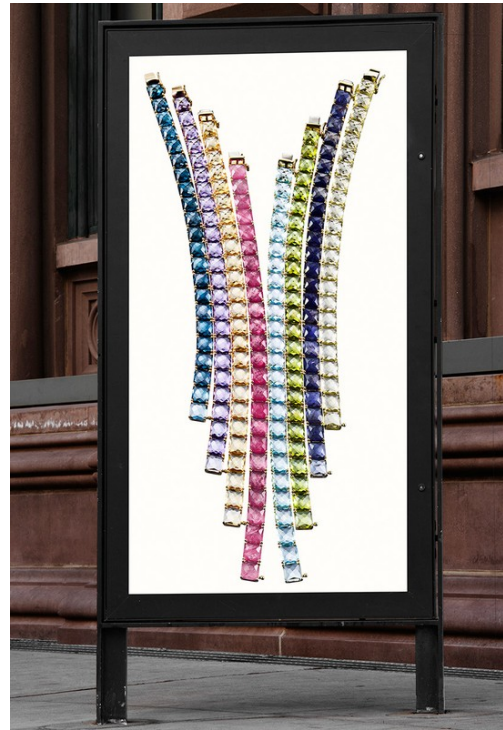


Peter Tran

[www.art-dept.com](http://www.art-dept.com)



# Art Department



Peter Tran

www.art-dept.com



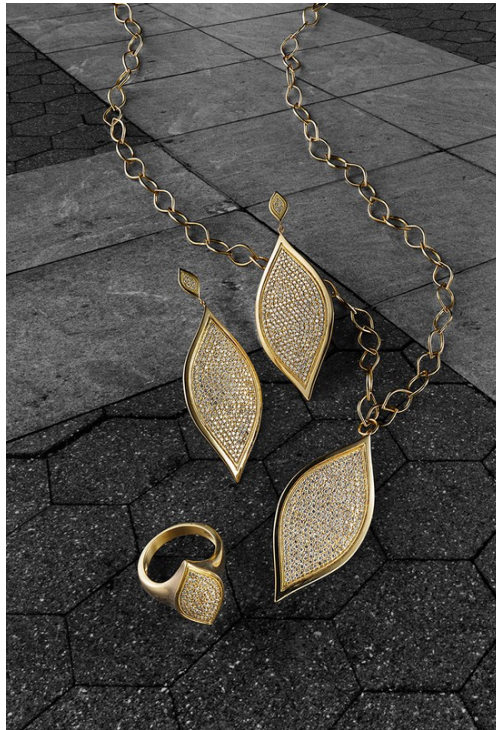
# Art Department



Peter Tran

[www.art-dept.com](http://www.art-dept.com)

# Art Department

A collection of various gold and silver bracelets, including a dragon head bracelet and a chain bracelet, displayed on a dark surface. The bracelets are arranged in a row, showing different designs and materials. The dragon head bracelet is particularly prominent, featuring a detailed dragon head design. The chain bracelet is made of gold and silver links. The other bracelets include a mix of gold and silver tones with various textures and patterns.

Classic Chain bracelets offer an array of timeless looks and styles, from sophisticated to dramatic. In some, clasps are adorned with the elegant glimmer of diamond pavé, while others come to life with accents inspired by the iconic Naga.

Classic Chain Collection Small Chain Bracelet with Diamond Pavé (approx. 0.56-1) \$995  
Naga Collection Dragon Station Medium Two-Tone Bracelet \$1,500 Classic Chain Collection  
Small Gold Chain Bracelet with Diamond Pavé (approx. 0.56-1) \$8,000 Naga Collection Dragon Head  
Bracelet on Small Braided Chain with Ruby \$2,500 Dragon Station Chain Bracelet \$495  
All in 18k Gold and Sterling Silver

Peter Tran

[www.art-dept.com](http://www.art-dept.com)



# Art Department



This season, rings express a new dimension of boldness. Some are highlighted by vibrant gemstones in artisanal designs, while others showcase diamonds in the style of the uncommon Parisian setting, acclaimed for displaying the brilliance of each stone.

**Classic Chain Collection Woven Braided Chain Band Ring with Diamond Pavé (approx. 0.37ct) \$995**  
**Dot Collection Wide Ring with Diamond Pavé (approx. 0.36ct) \$995**  
**Classic Chain Collection Medium Braided Chain Ring with Amethyst and Diamond Pavé (approx. 0.68ct) \$1,995**  
**Medium Braided Chain Ring with Citrine and Diamond Pavé (approx. 0.60ct) \$1,995**  
**Dot Collection Slim Ring with Diamond Pavé (approx. 0.32ct) \$795**  
**Classic Chain Collection Large Braided Chain Ring with London Blue Topaz and Diamond Pavé (approx. 0.82ct) \$3,250**. All in Sterling Silver.



20

**DEC 21** TIME FLIES WHEN YOU'RE HAVING FUN  
*Arrive—and stay—fashionably late in silver, gold and very limited-edition blue (only 200 are available).*



**VERSACE**  
 From far left to right: Leda Collection. All, 38mm watches. With IP rose gold guilloché dial on bracelet, \$1,295. With silver guilloché dial on stainless steel and IP rose gold bracelet, \$1,275. With IP rose gold case and black mother-of-pearl dial on black patent leather strap, \$1,095. The Urban Gent Collection. 40mm watches. Automatic with IP rose gold case and blue dial on blue patterned leather strap, \$3,095. Two-tone IP rose gold and stainless steel case with silver dial on brown patterned leather strap, \$2,995. Fine Watches.

BLOOMINGDALES.COM 21

Peter Tran

www.art-dept.com

# Art Department



Peter Tran

[www.art-dept.com](http://www.art-dept.com)



## A long necklace of pearls and diamonds, and a large diamond ring. The necklace features a mix of dark, light, and golden pearls interspersed with small diamonds. The ring is a large, ornate diamond ring with a complex, symmetrical design featuring multiple large diamonds and intricate pavé work.

800 967 3788 133

Peter Tran



# Art Department



**BERGDORF GOODMAN**

5TH AVENUE AT 58TH STREET 800 967 3788



POMELLATO

BERGDORF GOODMAN  
WARMLY WELCOMES



BAYCO

BERGDORF GOODMAN  
WARMLY WELCOMES



Only at  
BG  
BERGDORF GOODMAN

**Peter Tran**

[www.art-dept.com](http://www.art-dept.com)

# Art Department



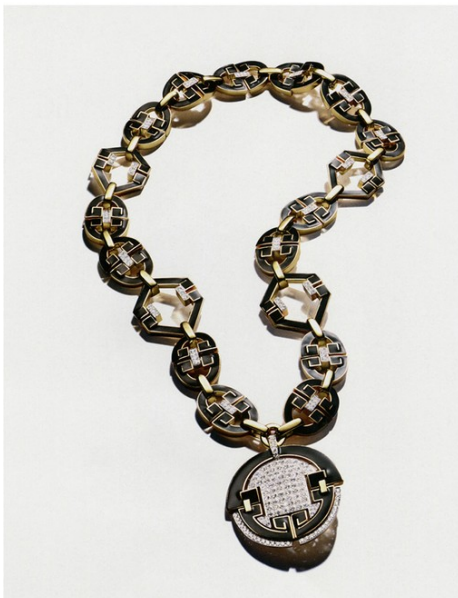
STEPHEN WEBSTER



de GRISOGONO

BERGDORF GOODMAN  
WARMLY WELCOMES

BERGDORF GOODMAN



DAVID WEBB

BERGDORF GOODMAN

5TH AVENUE AT 58TH STREET 800 967 3288



FARAONE MENNELLA

BERGDORF GOODMAN  
WARMLY WELCOMES

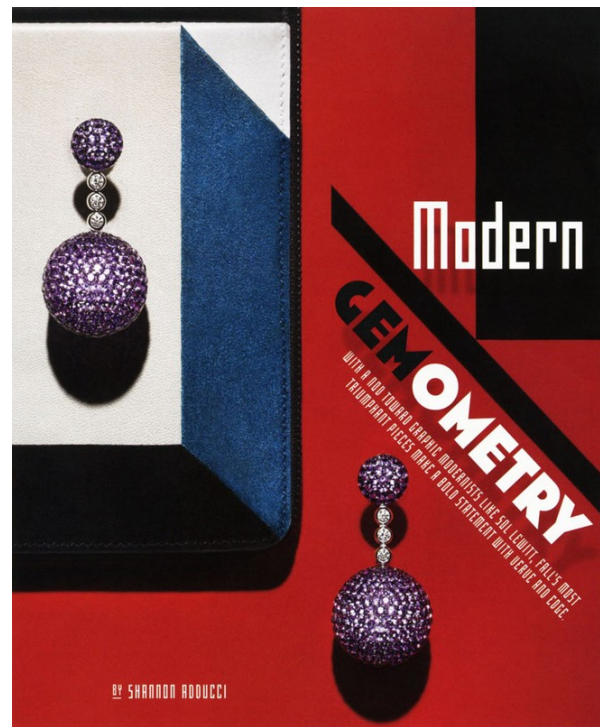
Only at  
BG

## Peter Tran

[www.art-dept.com](http://www.art-dept.com)



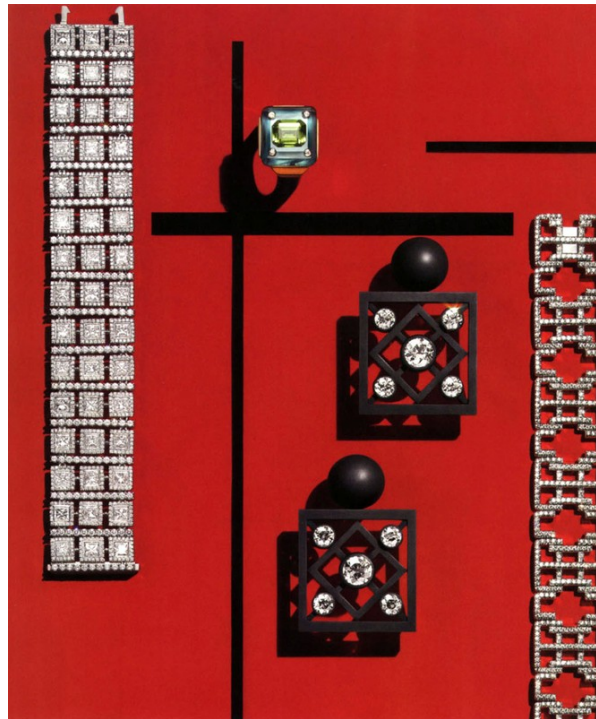
# Art Department



Peter Tran

[www.art-dept.com](http://www.art-dept.com)

# Art Department



Peter Tran

[www.art-dept.com](http://www.art-dept.com)



# Art Department



Peter Tran

[www.art-dept.com](http://www.art-dept.com)

# Art Department



Peter Tran

[www.art-dept.com](http://www.art-dept.com)



# Art Department



Peter Tran

[www.art-dept.com](http://www.art-dept.com)

# Art Department



Peter Tran

[www.art-dept.com](http://www.art-dept.com)