

# Art Department



Renata Chaplynsky

[www.art-dept.com](http://www.art-dept.com)

# Art Department



Renata Chaplynsky

[www.art-dept.com](http://www.art-dept.com)



# Art Department



Renata Chaplynsky

[www.art-dept.com](http://www.art-dept.com)



# Art Department



Renata Chaplynsky

[www.art-dept.com](http://www.art-dept.com)



# Art Department



Renata Chaplynsky

[www.art-dept.com](http://www.art-dept.com)



# Art Department



**GOOD  
HUNTING**

THE BEST OF SOUTHERN HOMES, GARDENS, STYLE, AND MORE

SOUTHERN STYLE  
**Rein  
Supreme**  
HANDSOME WATCHES  
INSPIRED BY THE  
EQUESTRIAN WORLD

**STRAPPING FIGURE**  
Ralph Lauren elevates the hardworking equine stirrup to a thing of beauty with an 18k rose-gold case, a self-winding movement, and a black alligator strap (\$25,800; [ralphlauren.com](http://ralphlauren.com)).

PHOTOGRAPHS BY DAVID PRINCE

GARDEN&GUN FEB. / MAR. 2018 61

Renata Chaplynsky

[www.art-dept.com](http://www.art-dept.com)



# Art Department

## GOOD HUNTING

### POLO PANACHE

The Reverso Tribute Moon by Jaeger-LeCoultre nods to the watchmaker's first collection in 1931, which allowed polo players to reverse the face of the watch during play to protect it, with one celestial update: a hand-hammered disk showing lunar progressions on the dial (\$12,700; [jaeger-lecoultre.com](http://jaeger-lecoultre.com)).

### WINNING STREAK

Cartier celebrated its 100th anniversary last year, and to mark the occasion it released thirteen updates of the brand's most iconic watch: the Tank. This iteration offers a caramel leather strap and an 18k rose-gold case—a fitting look for a day at the races (\$9,900; [cartier.com](http://cartier.com)).

### BORN TO RUN

Keep tabs on every time at the track with this deep blue classic watch from the Master Collection by Longines. The topstitched leather strap, the easy-to-read dial, and the stainless-steel case create just the right amount of drama peeking out from a crisp white shirt (\$2,150; [longines.com](http://longines.com)).

64 FEB. / MAR. 2018 GARDEN&GUN

## Renata Chaplynsky

[www.art-dept.com](http://www.art-dept.com)



# Art Department



GOOD  
HUNTING

**■ BLUE RIBBON READY**  
The stitched leather strap, the white-gold case, and the elegant guilloché stripes on the blue dial of the Rolex Cellini Date sport a formality that looks dashing on Derby Day (\$17,800; [rolex.com](http://rolex.com)).

**■ STITCH IN TIME**  
Launched in Switzerland at the 2017 Baselworld watch show, the Cape Cod Bracelet de Force by Hermès features the saddle stitching used by the company's artisans for centuries. The athletic, sturdy timepiece stands up as stylishly on a morning ride as it does on a morning commute (\$3,400; [hermes.com](http://hermes.com)).

62 FEB. / MAR. 2018 GARDEN&GUN

Renata Chaplynsky

[www.art-dept.com](http://www.art-dept.com)



# Art Department

**JUBILEE**

Clockwise from top left:

- With its blue-green box-elder burl handle and Damascus steel blade, this shucker by Shannon Reed at Coastal Custom Knife Works in Summerville, South Carolina, calls to mind Louisiana's tidal marshes (\$250; [coastalcrafts.com](http://coastalcrafts.com)).
- The lacquered burl handle of this knife designed by Heartwood Forge in Athens, Georgia, for Dwyer's Kimball House restaurant, takes inspiration from harvesters' bags. It gives back, too: a portion of the proceeds benefits Appalachia Riverkeeper (\$285; [heartwoodforge.com](http://heartwoodforge.com)).
- Culinary bladesmith Travis Weige of Weige Knives in Austin, Texas, sets off his ironwood-handled shucker with a brass bolster and pins (\$275; [weighknives.com](http://weighknives.com)).
- Zack Worrell and Nick Watson of Monolith Studio Knives in Charlottesville, Virginia, collaborated with the folks at White Stone Oyster Company to design this half-spear, half-bulb-shaped handle and thin Damascus steel blade (\$175; [monolith.com](http://monolith.com)).
- Richmond artisan Brent Stubblefield's Joiner Die shucker nods to another Southern tradition—the handle is carved from bourbon barrel staves (\$125; [gridsupplyco.com](http://gridsupplyco.com)).

**TOOLS**

**Finer Points**  
BE READY FOR A ROAST OR RAW BAR WITH A SOUTHERN FORGED OYSTER KNIFE

PHOTOGRAPH BY DAVID PRINCE

GARDEN MAG FEB. / MAR. 2018 57

Renata Chaplynsky

[www.art-dept.com](http://www.art-dept.com)



# Art Department



# Renata Chaplynsky

www.art-dept.com



# Art Department



## YESTERDAY TO TODAY

"Women are mixing vintage and modern in order to create a statement that's singular," says Louis Webre, senior vice president of the auction powerhouse Doyle New York. Webre sees an uptick of interest in clothing and accessories from the Victorian, Art Nouveau and Art Deco periods. Case in point: these chandelier earrings. They offer a perfect marriage of Victorian-era stonework (old) with a surround of black-edged flowers made of feathers (new).

**JOHN HARDY** white-gold natural feather earrings with aquamarines, sapphires and diamonds; 888-838-3022.

## Renata Chaplynsky

[www.art-dept.com](http://www.art-dept.com)



# Art Department



**THE  
TOAST OF THE  
TOWN**

Once you sip from  
a goblet like this, you'll  
never use a plain old wineglass  
again. As it should be

BY SHEILA BRIDGES

*Rosa Eglanteria.*

*Stemware by Renata*

**I'LL DRINK TO THAT**

When I was growing up, the  
“good” stemware was  
saved for major holidays, and  
the rest of the year it  
gathered dust in our dining  
room china cabinet. That’s ex-  
actly what I tell my clients  
not to do. If you have nice  
things, use them! This vintage  
midcentury Italian  
glassware comes in a slew of  
styles, in rich, saturated  
colors, and it works for formal  
and informal occasions.  
Whether you fill it with water  
or wine, it’s a great  
way to enjoy luxury every day.  
[@harlemtoilegirl](#)

**THE END OF HISTORY** vintage Italian  
stemware; 212-647-7598.

**30**  
MORE MARCH 2015

PHOTOGRAPHED BY Anita Calero

Renata Chaplynsky

[www.art-dept.com](http://www.art-dept.com)



# Art Department



Renata Chaplynsky

[www.art-dept.com](http://www.art-dept.com)



# Art Department



Renata Chaplynsky

[www.art-dept.com](http://www.art-dept.com)



# Art Department



Renata Chaplynsky

[www.art-dept.com](http://www.art-dept.com)



# Art Department

THE OPRAH MAGAZINE

## love that!

\$150;  
mattandnat.com

MATT & NAT

### AHEAD OF THE PACK

We're giving this sweet little knapsack from Matt & Nat the green light: The luxe-looking vegan leather the brand is known for—nothing comes from animals, not even the glue—is so supple, it feels like the real thing. Plus, the roomy inside (bank on enough space for a 13-inch laptop) is lined with material made solely from recycled plastic bottles (an average of 21 per bag). And who doesn't love a plethora of pockets? There's a grand total of five to stash a bouquet of essentials.

PHOTOGRAPH BY Richard Majchrzak

OPRAH MAGAZINE APRIL 2019 45



Renata Chaplynsky

www.art-dept.com



# Art Department

## the **O** list

A few things we think are just great.



### Razzle-Dazzle 'Em

Don't let the fact that the economy is in recession keep your earlobes from looking like a million bucks. The jewels may be faux, but the sparkle is real. (*Kate Spade, \$45 per pair; [katespade.com](http://katespade.com)*) ▶

## Renata Chaplynsky

[www.art-dept.com](http://www.art-dept.com)



# Art Department

ELLE ACCESSORIES TRENDS

WHITE GOLD BUTTERFLY CLIP WITH  
DIAMONDS, TSAVORITE GARNETS,  
CORAL, AND MOTHER-OF-PEARL,  
VAN CLEEF & ARPELS, PRICE ON  
REQUEST, CALL 877-826-2553 OR VISIT  
VANCLEEFARPELS.COM



YELLOW AND WHITE GOLD  
POPPY NECKLACE WITH RUBIES,  
EMERALDS, TSAVORITE GARNETS,  
COLORED SAPPHIRES, AND BLACK  
DIAMONDS, CHOPARD, PRICE ON  
REQUEST, CALL 800-CHOPARD OR  
VISIT CHOPARD.COM

Darling  
Buds

Channel a woodland  
nymph in fall's delicate,  
nature-inspired fine jewelry

ILLU 46 www.elle.com

STYLING: RENATA CHAPLYNSKY

## Renata Chaplynsky

www.art-dept.com



# Art Department



The image features three distinct floral watches arranged vertically against a background of long, green grass blades. The top watch is a Van Cleef & Arpels Cosmos, featuring a white dial with a diamond-set bezel and a strap adorned with blue sapphires and diamonds. The middle watch is a Chanel Camélia, with a white dial, a bezel set with rubies and diamonds, and a strap featuring large, oval-cut rubies and diamonds. The bottom watch is a P. Swiss Panse, featuring a white dial with a diamond-set bezel and a strap made of large, oval-cut diamonds.

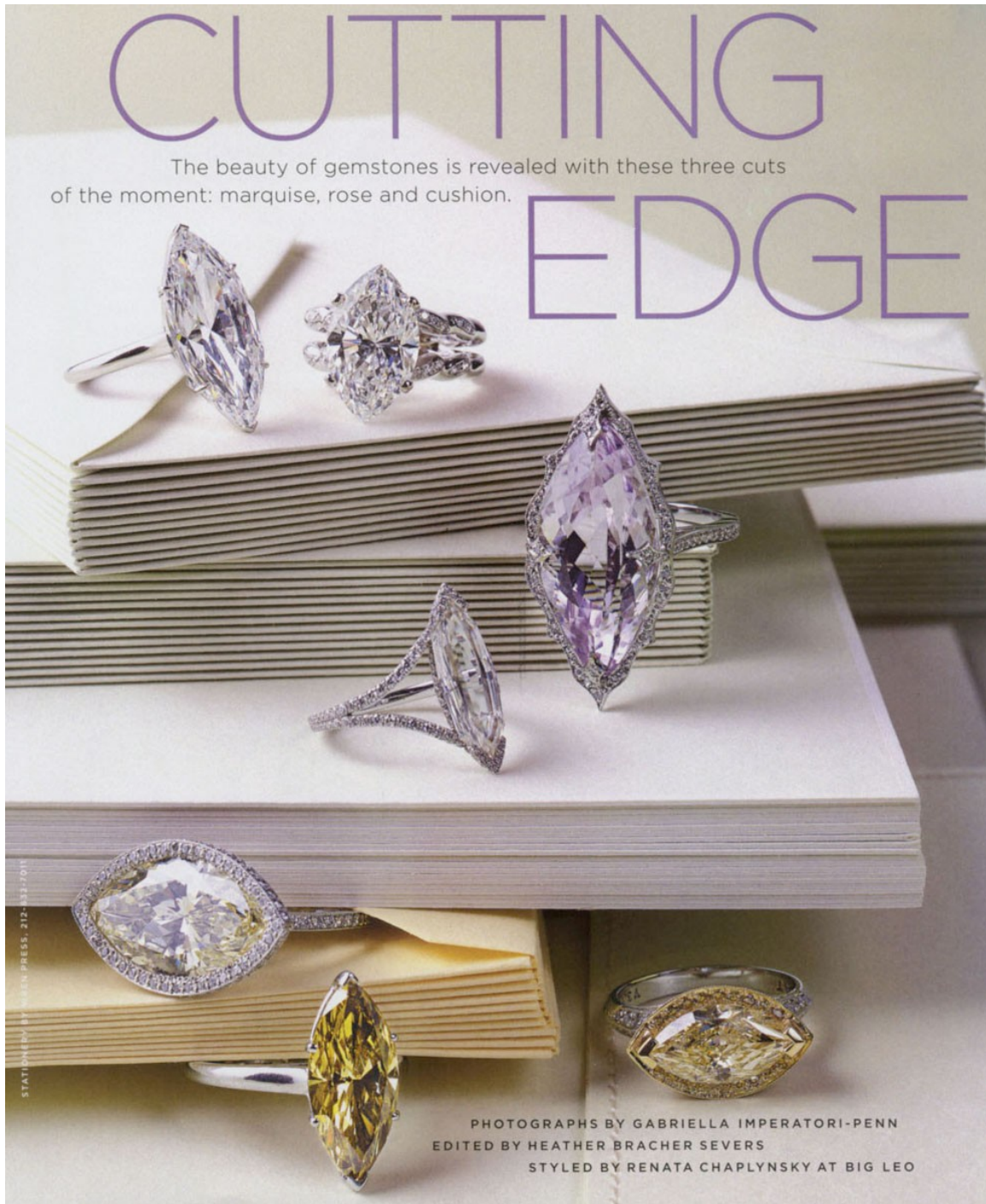
**GARDEN VARIETY**  
Spring has sprung. Wear a gem-encrusted floral watch to celebrate.  
Clockwise from left: VAN CLEEF & ARPELS 18k-white-gold, sapphire and diamond Cosmos (\$126,000), 877-VAN-CLEEF. CHANEL 18k-white-gold, ruby and diamond Camélia (\$140,000), 800-550-0005. P SWISS Panse with diamonds (\$2,995), 954-356-8118.

Renata Chaplynsky

[www.art-dept.com](http://www.art-dept.com)



# Art Department



Renata Chaplynsky

[www.art-dept.com](http://www.art-dept.com)



**THE BOLD AND THE BEAUTIFUL**

Wear a knockout necklace and let the compliments flow. Clockwise from top left: SIMAN TU faceted labradorite (\$1,010), 212-327-4626. TONY DUQUETTE amethyst beads in 18k gold (\$43,625), at Bergdorf Goodman, NYC, 800-558-1855. IRADJ MOINI aquamarine beads with aquamarine, amethyst and pearl clasp (\$1,870), at Mariko, Palm Beach, 561-655-5770. BOUNKIT amethyst, citrine and rutilated quartz (\$1,750), at Lola, Rye, NY, 914-921-3162. IRADJ MOINI turquoise, amethyst and rutilated quartz (\$3,630), at Domont, West Hollywood, CA, 310-289-9500.

www.art-dept.com



# Art Department



**ROSE CUT**

Developed in the 16th century, the rose cut, with its glamorous old-world look, features a flat base with facets radiating from the center. This page: **MUNNU** 89.78-carat diamond flower necklace and 10.62-carat diamond earrings (prices on request). Opposite, clockwise from left: **DAVID MORRIS** 40.3-carat diamond Le Motif necklace (price on request), **FRED LEIGHTON** 6.2-carat diamond ring (\$85,000), **NEIL LANE** 20-carat diamond earrings (\$275,000), **JACOB & CO.** 42.57-carat diamond necklace (\$290,000).

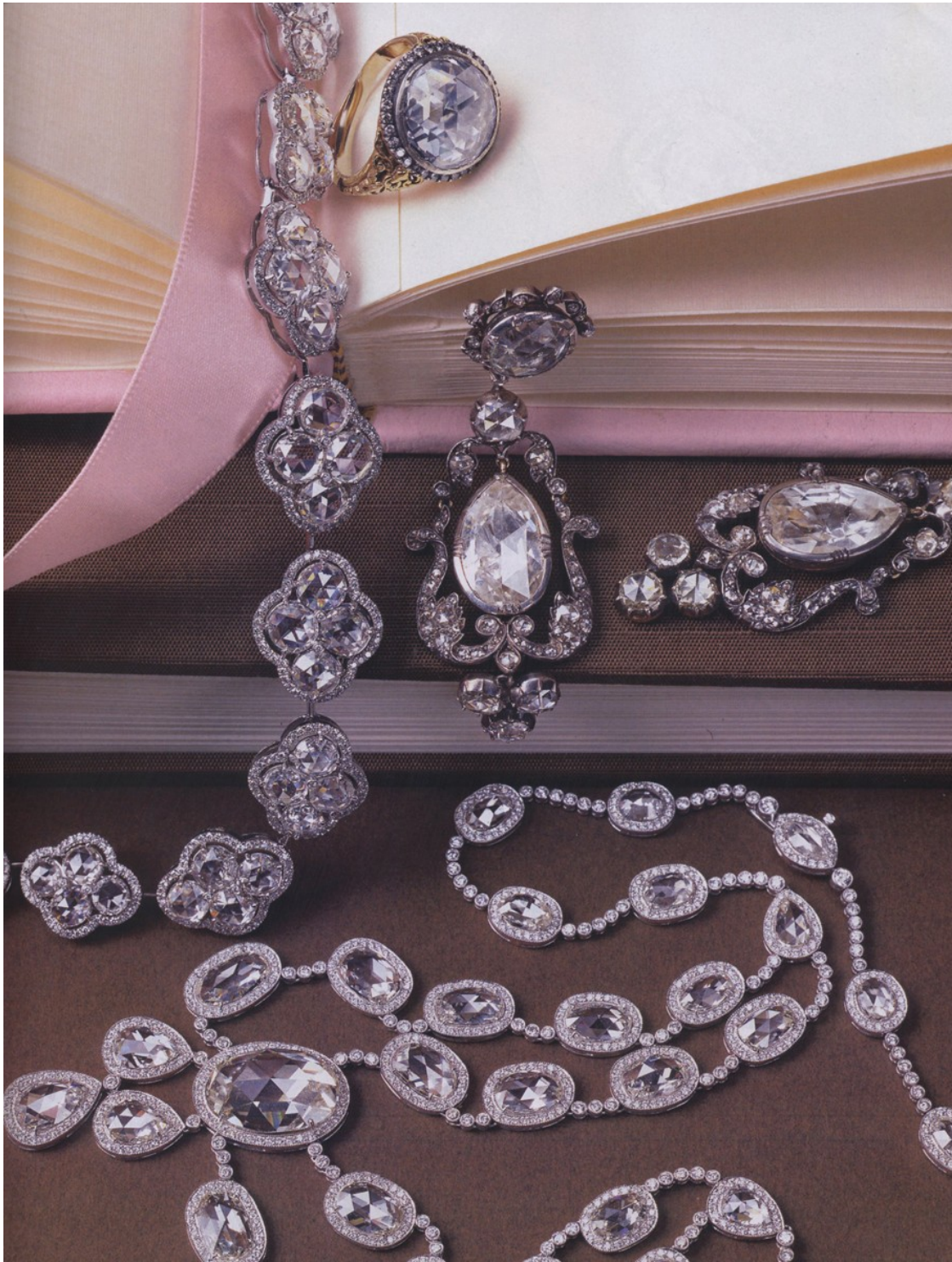
108 TOWN & COUNTRY WEDDINGS

Renata Chaplynsky

[www.art-dept.com](http://www.art-dept.com)



# Art Department



Renata Chaplynsky

[www.art-dept.com](http://www.art-dept.com)



# Art Department



CUSHION CUT

A diamond's brilliance is particularly enhanced by a cushion cut: a square or rectangular shape with rounded corners. The cushion cut dates from the 1600s. This page, clockwise from top left: **CHOPARD** 2.59-carat Haute Joaillerie collection diamond ring (price on request). **LAURA MUNDER** pink tourmaline and diamond ring (\$15,000). **ERICA COURTNEY** pink diamond ring (\$60,000). **DAVID YURMAN** Signature Collection 2.69-carat diamond ring (\$69,800). **GRAFF** 5-carat diamond ring (price on request). **BEAUDRY** 3.02-carat diamond ring (\$95,765). **NEIL LANE** 2.04-carat fancy-colored diamond ring (\$28,000). **CARTIER** 12.62-carat diamond ring (price on request). Opposite: **WILLIAM GOLDBERG** 60-carat diamond Maharaja necklace (price on request). For shopping information, see page 136.

110 TOWN & COUNTRY WEDDINGS

Renata Chaplynsky

[www.art-dept.com](http://www.art-dept.com)



# Art Department

## CUFF IT UP

Chunky bracelets adorned with delicate, pretty jewels are fun and feminine. Clockwise from top: BOCHIC white Bakelite with pink tourmaline and rose-cut diamonds (\$9,250), 212-873-0707. NICHOLAS VARNEY JEWELS petrified palm-tree wood with amethyst (price on request), 212-223-1043. LAURA MUNDER jet with lavender jade, diamonds and pink sapphires (\$40,300), 877-MUNDER-2; lauramunder.com. BOCHIC white Bakelite with cabochon-cut ruby, rose-cut diamonds and 22k gold (\$9,700). H. STERN 18k-gold and diamond Neptune (\$470,000), 800-7-HSTERN. LAURA MUNDER white jade with pink tourmalines and multi-colored diamonds (\$125,000).



Renata Chaplynsky

[www.art-dept.com](http://www.art-dept.com)



# Art Department



## OFF THE CHAIN

Gilded links bring heavy metal shine to basic black

Chain-link brass cuffs, JENNIFER FISHER,  
\$725 each, visit [jenniferfisherjewelry.com](http://jenniferfisherjewelry.com)

Silver Linkbelt, gifted by Renata Chaplynsky for Art Department;  
for details, see Shopping Guide

## Renata Chaplynsky

[www.art-dept.com](http://www.art-dept.com)



# Art Department



## PAINT BALL

Keep a masterpiece  
on hand with  
a brightly painted  
purse or an artsy  
sketch-ready bag

Renata Chaplynsky

[www.art-dept.com](http://www.art-dept.com)



# Art Department



Renata Chaplynsky

[www.art-dept.com](http://www.art-dept.com)



# Art Department

## GET SHORTY

Ground control to  
major heels: The resort  
collections bring sensible  
heights that stylishly split  
the difference between  
flats and stilettos



Renata Chaplynsky

[www.art-dept.com](http://www.art-dept.com)



# Art Department



## HARD CANDY

Soft pastels and an iridescent sheen make for a winning combination on heels and bags

Renata Chaplynsky

[www.art-dept.com](http://www.art-dept.com)



# Art Department



Renata Chaplynsky

[www.art-dept.com](http://www.art-dept.com)



# Art Department



Renata Chaplynsky

[www.art-dept.com](http://www.art-dept.com)



# Art Department



Renata Chaplynsky

[www.art-dept.com](http://www.art-dept.com)



# Art Department



Renata Chaplynsky

[www.art-dept.com](http://www.art-dept.com)



# Art Department



Renata Chaplynsky

[www.art-dept.com](http://www.art-dept.com)



# Art Department



Renata Chaplynsky

[www.art-dept.com](http://www.art-dept.com)



# Art Department



Renata Chaplynsky

[www.art-dept.com](http://www.art-dept.com)



# Art Department



Renata Chaplynsky

[www.art-dept.com](http://www.art-dept.com)



# Art Department



Renata Chaplynsky

[www.art-dept.com](http://www.art-dept.com)

# Art Department



Renata Chaplynsky

[www.art-dept.com](http://www.art-dept.com)



# Art Department



Renata Chaplynsky

[www.art-dept.com](http://www.art-dept.com)

# Art Department



Renata Chaplynsky

[www.art-dept.com](http://www.art-dept.com)



# Art Department



Renata Chaplynsky

[www.art-dept.com](http://www.art-dept.com)



# Art Department

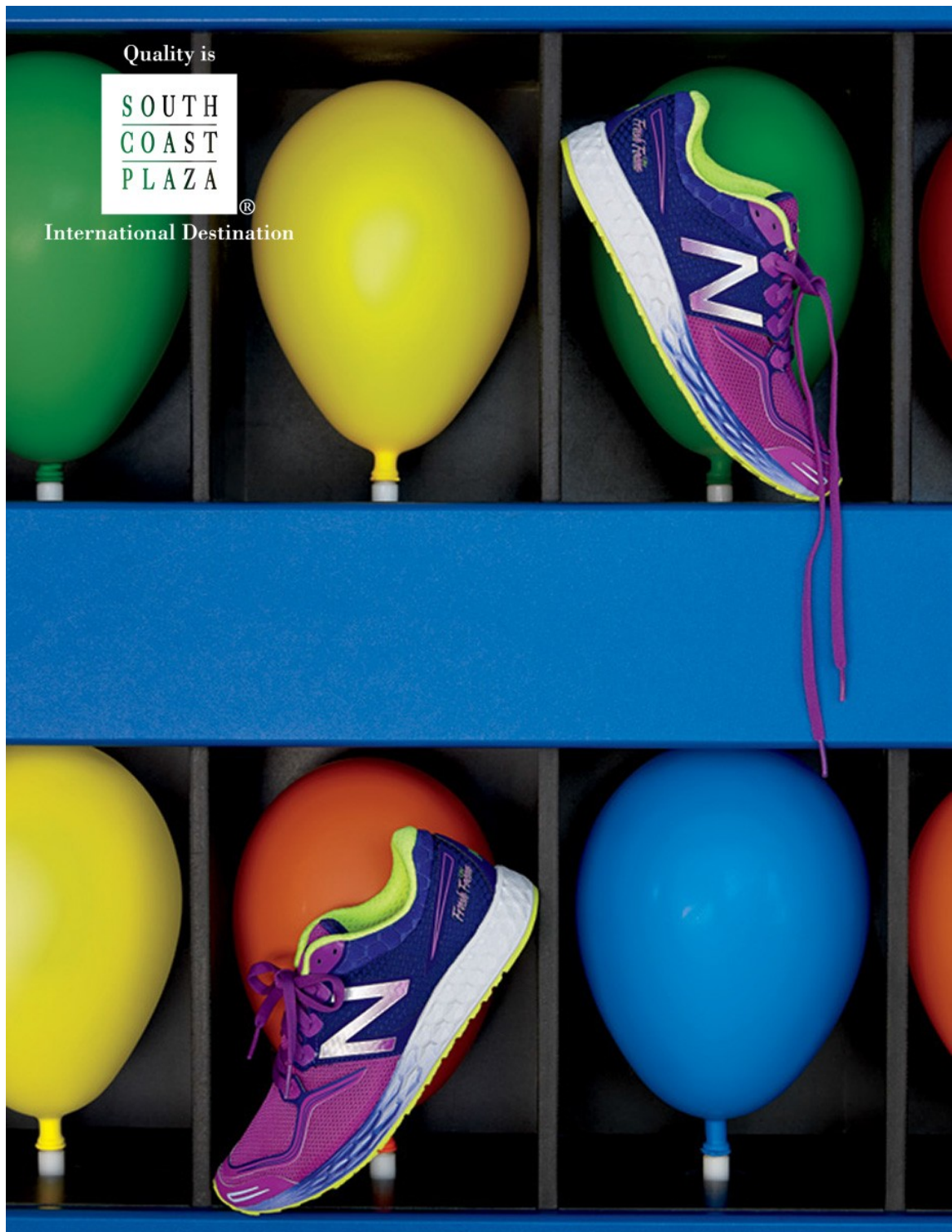


Renata Chaplynsky

[www.art-dept.com](http://www.art-dept.com)



# Art Department



Renata Chaplynsky

[www.art-dept.com](http://www.art-dept.com)

# Art Department



Renata Chaplynsky

[www.art-dept.com](http://www.art-dept.com)



# Art Department



Renata Chaplynsky

[www.art-dept.com](http://www.art-dept.com)

# Art Department

**DESIGN  
YOUR  
OWN**



**Your inspiration. Your one-of-a-kind.**

Design your own men's, women's and kids' styles at [timberland.com](https://www.timberland.com)

**GET STARTED**

Renata Chaplynsky

[www.art-dept.com](https://www.art-dept.com)



# Art Department



Renata Chaplynsky

[www.art-dept.com](http://www.art-dept.com)

# Art Department



Renata Chaplynsky

[www.art-dept.com](http://www.art-dept.com)



# Art Department

## Boots

Lighter, drier models that will carry you from fall to winter — no matter the conditions.

### BREAKTHROUGH

#### The Go-Anywhere Hiking Boot

\$190; [salewa.com](http://salewa.com)

One of the most versatile boots we've ever tested, the **Salewa Hike Trainer GTX** has the technical guts to handle low-scale rock climbing but the stability and comfort to be used as a day hiker. It's incredibly tough, with a reinforced sole, steel wire frame, and front cup that keeps your ankle supported and toes secure. The lacing system stays snug and conforms to your foot yet never feels cramped; sticky rubber edging helps on scrambles. A soft nubuck upper provides comfort for the ankle, while a Gore-Tex membrane keeps it weather tight but breathable.

**STICKING IT**  
A supersticky compound in the outsole ensures your feet will stay steady even in inclement trail conditions.



## Renata Chaplynsky

[www.art-dept.com](http://www.art-dept.com)

# Art Department



## Road Shoes

The best new pavement pounders, put to the test by real runners.

**BREAKTHROUGH**

**Finally, a Shoe That Works for (Almost) Everyone**  
\$145; [asicsamerica.com](http://asicsamerica.com)

Generally speaking, lighter shoes are shunned by heavier runners, and heavier shoes are no good for lighter runners. But the **Asics Gel-Nimbus 15** received universal praise from testers — many of whom noted that finding a high-end road training shoe that's cushioned, responsive, and viable for runners of all sizes and abilities is close to impossible. We liked the mattress-like ride and the fact that it provides plenty of support. If you're looking to up your mileage, start here.

**FEELS SO GOOD**  
ASICS put massive amounts of gel under the forefoot and heel to provide one of the most comfortable rides we've ever tested.

Renata Chaplynsky

[www.art-dept.com](http://www.art-dept.com)



# Art Department



Renata Chaplynsky

[www.art-dept.com](http://www.art-dept.com)

# Art Department



Renata Chaplynsky

[www.art-dept.com](http://www.art-dept.com)



# Art Department



Renata Chaplynsky

[www.art-dept.com](http://www.art-dept.com)

# Art Department



Renata Chaplynsky

[www.art-dept.com](http://www.art-dept.com)



# Art Department



Renata Chaplynsky

[www.art-dept.com](http://www.art-dept.com)

# Art Department



Renata Chaplynsky

[www.art-dept.com](http://www.art-dept.com)



# Art Department



Renata Chaplynsky

[www.art-dept.com](http://www.art-dept.com)

# Art Department



Renata Chaplynsky

[www.art-dept.com](http://www.art-dept.com)



# Art Department



Renata Chaplynsky

[www.art-dept.com](http://www.art-dept.com)

# Art Department



Renata Chaplynsky

[www.art-dept.com](http://www.art-dept.com)



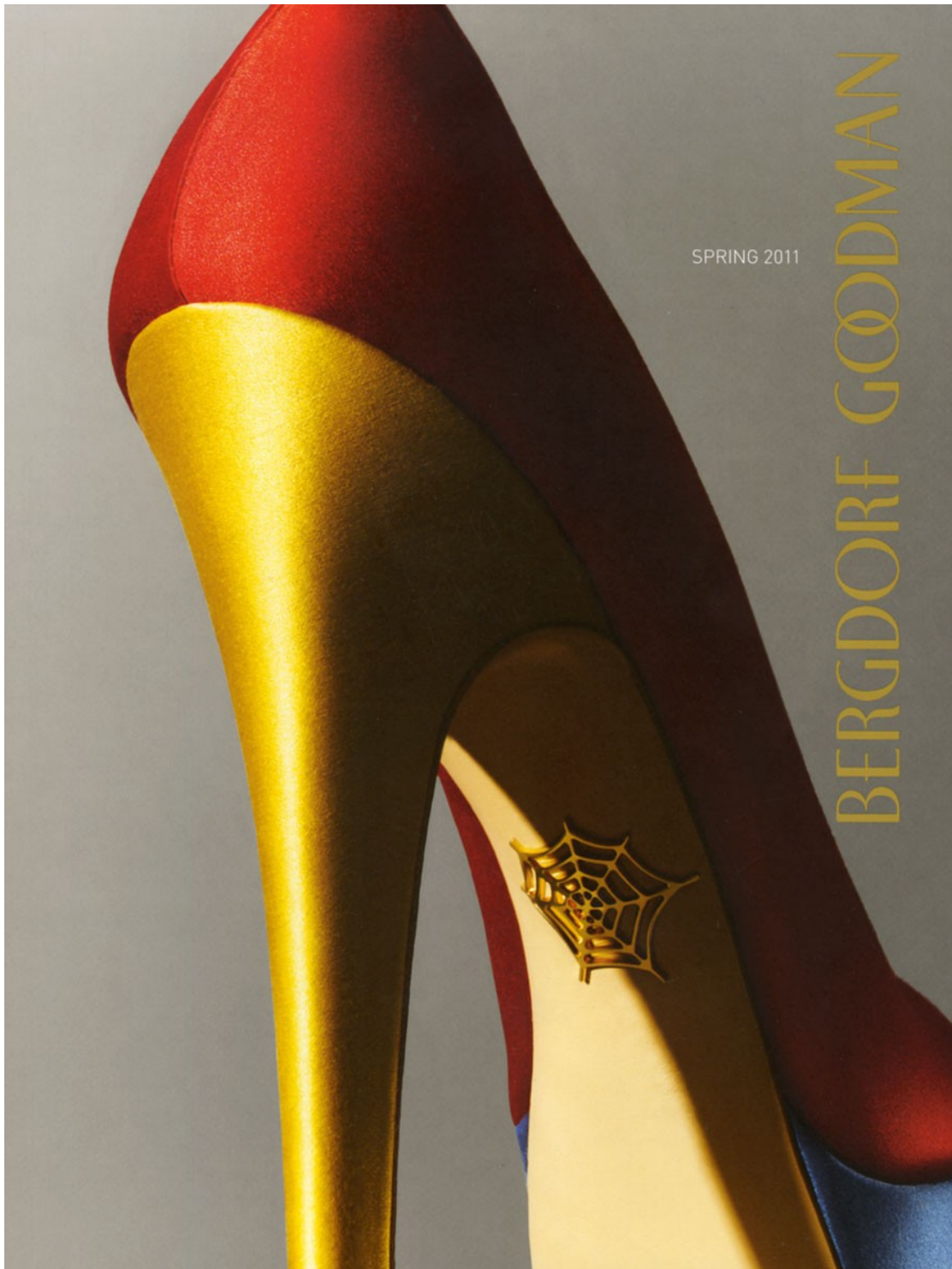
# Art Department



Renata Chaplynsky

[www.art-dept.com](http://www.art-dept.com)

# Art Department



Renata Chaplynsky

[www.art-dept.com](http://www.art-dept.com)



# Art Department



Renata Chaplynsky

[www.art-dept.com](http://www.art-dept.com)

# Art Department



Renata Chaplynsky

[www.art-dept.com](http://www.art-dept.com)



# Art Department



Renata Chaplynsky

[www.art-dept.com](http://www.art-dept.com)

# Art Department



Renata Chaplynsky

[www.art-dept.com](http://www.art-dept.com)



# Art Department



Renata Chaplynsky

[www.art-dept.com](http://www.art-dept.com)

# Art Department



Renata Chaplynsky

[www.art-dept.com](http://www.art-dept.com)



# Art Department



Renata Chaplynsky

[www.art-dept.com](http://www.art-dept.com)

# Art Department



Renata Chaplynsky

[www.art-dept.com](http://www.art-dept.com)



# Art Department



Renata Chaplynsky

[www.art-dept.com](http://www.art-dept.com)

# Art Department

## Course of Study

Calling all students of fashion and commerce. For fall, designers give lessons in disciplines from geometry to zoology.

Photographed by Nigel Cox

1. **BE&D** leather and patent leather bag, \$1,150, at select Neiman Marcus stores (800.937.9146).

2. **LANVIN** patent leather and plastic bag, \$2,540, at Jeffrey (212.206.1272) and Barneys New York (212.826.8900), New York, and Susan, San Francisco (415.922.3685).

3. **LUCIANO PADOVAN** calfskin shoe, \$490, at Chuckies, New York (212.593.9898), neimanmarcus.com and intermixonline.com.

4. **VERSACE** patent leather bag, available by special order at 888.3VERSACE.

5. **BRUNO MAGLI** leather and fiberglass shoe, \$515, at brunomagli.com and 800.MAGLI.30.

6. **ETRO** wood necklace, \$455, at Etro, New York (212.317.9096), Beverly Hills (310.248.2855) and Coral Gables, Fla. (305.569.1669).

7. **JAEGER-LECOULTRE** 18k white gold and diamond watch, \$78,100, at 800.JLC.TIME and jaeger-lecoultre.com.

8. **EMILIO PUCCI** brass and wood bracelet, \$580, at Emilio Pucci, New York (212.752.4777).

9. **HOGAN** leather shoe, \$345, at Hogan, New York (212.343.3039).

10. **SERGIO ROSSI** silk shoe, \$545, at Sergio Rossi nationwide (sergiorossi.com).

11. **GUCCI** leather and metal clutch, \$795, at select Gucci boutiques (800.456.7663).

PROP STYLIST: RENATA CHAPLYNSKY; STYLED BY: HAVANNE ROBINSON-ESCHOUT

114 WWDACCESSORIES FALL 2007

## Renata Chaplynsky

[www.art-dept.com](http://www.art-dept.com)



# Art Department

## Right Angles

Get your protractor out and sharpen up for this season's geometric looks.



WWDACCESSORIES FALL 2007 115

## Renata Chaplynsky

[www.art-dept.com](http://www.art-dept.com)

# Art Department

## COURSE OF STUDY

### Novel Experience

Like the great romantic heroines, these decorative pieces will incite lust.

1. BOTKIER lambskin bag with copper hardware, \$695, at Bloomingdale's, New York (212.705.2000) and Neiman Marcus, Dallas (214.363.8311).
2. AGNELLE leather gloves, \$69, at Bergdorf Goodman (800.558.1855) and Takashimaya (212.350.0100), New York.
3. CHANEL wool and patent calfskin bootie, \$1,250, at select Chanel boutiques (800.550.0005).
4. ALBERTA FERRETTI silk satin bag, \$545, at Philosophy di Alberta Ferretti, New York (212.460.5500).
5. MARY NORTON gold-plated metal and viscose satin minaudière, \$1,195, at Saks Fifth Avenue, New York (212.753.4000), Mary Norton, Los Angeles (323.852.1800) and Tootsie's, Houston (713.629.9990).
6. KERRY'O silver and ebony flower ring, price available upon request, at Kerry'O, Paris (+33.1.4548.9467).
7. DE VERA oxidized silver, Venetian bead, seed pearl and diamond necklace and pendant, \$6,950, at De Vera, New York (212.625.0838).
8. PAUL SMITH WOMEN ponyhair clutch with glass, metal and plastic embellishments, \$1,110, at Paul Smith, Greene Street, New York (646.613.3060).
9. LYDIA COURTEILLE 18k yellow gold, silver, diamond, ruby, enamel and cameo ring, \$24,000, at Lydia Courteille, Paris (+33.1.4261.1173).
10. MARQUIS & CAMUS brass, handmade cotton muslin rosebud and vintage crystal necklace, \$238, at Peggy Pardon, New York (212.529.3636) and boysnbargains.com.
11. CHRISTIAN LOUBOUTIN suede and leather boot, \$1,120, at Christian Louboutin, New York (212.396.1884).
12. MIU MIU leather pump, \$525, at select Nordstrom stores (888.282.6060).
13. VIKTOR & ROLF leather bootie, \$580, at Iris (212.465.8575) and Bloomingdale's (212.705.2000), New York, and The Shoe Box, Plainville, N.Y. (516.931.7775).
14. BENOIT MISSOLIN cotton velvet and foil headband, \$221, at benoitmissolin.com.

PHOTO BY NIEL COO; PROP STYLING: RENATA CHAPLYNSKY; STYLING BY RENATA CHAPLYNSKY



WWDACCESSORIES

## Renata Chaplynsky

[www.art-dept.com](http://www.art-dept.com)



# Art Department



Renata Chaplynsky

[www.art-dept.com](http://www.art-dept.com)

# Art Department



Renata Chaplynsky

[www.art-dept.com](http://www.art-dept.com)



# Art Department



Renata Chaplynsky

[www.art-dept.com](http://www.art-dept.com)

# Art Department

PERFECT TOUCHES | SHOES

## head over heels

No matter what your style—serene, sparkly or state-of-the-art—fall in love with a shoe that says “you”

PHOTOGRAPHED  
BY JONELLE WEAVER

White satin sling-backs, Jimmy Choo, \$445; 866-524-6600

*princess*

Ivory pumps with bows, Yoriko Powell, \$310; 212-787-8874

Renata Chaplynsky

[www.art-dept.com](http://www.art-dept.com)



# Art Department



Renata Chaplynsky

[www.art-dept.com](http://www.art-dept.com)

# Art Department



## The Midas Touch

Pretty shoes in a golden hue are sure to be treasured even after your wedding. Clockwise from top right: RENE CAO VILLA leather and Swarovski crystal embroidered mules (\$825). JIMMY CHOO silk and metallic leather Ren sandals (\$450). OSCAR DE LA RENTA leather Halter sandals (\$425). DELMAN Chantilly lace and satin Nicole pumps (\$265). MANOLO BLAHNIK FOR PETER SOM leather Svelt sandals (\$565). For shopping information, see page 136.

Renata Chaplynsky

[www.art-dept.com](http://www.art-dept.com)



# Art Department



Renata Chaplynsky

[www.art-dept.com](http://www.art-dept.com)

# Art Department



ENGRAVABLE REPP STRIPE  
STERLING SILVER COLLECTION  
Handsome accessories engraved with the  
signature pattern of our repp stripe ties.  
Rhodium-plated. \$10 engraving charge per  
item. Imported.

BELT BUCKLE—\$158  
2" x 1 1/2", (675C)

SINGLE MONEY CLIP—\$108  
2 1/2" x 3/8", (667C)

RECTANGULAR KEY FOB—\$128  
2 1/2" x 1", (672C)

DOUBLE-SIDED MONEY CLIP—\$128  
2 1/2" x 3/8", (664C)

BUSINESS CARD CASE—\$228  
Hinged, 3 1/2" x 2 1/2", (674C)

Renata Chaplynsky

[www.art-dept.com](http://www.art-dept.com)



# Art Department



Renata Chaplynsky

[www.art-dept.com](http://www.art-dept.com)

# Art Department



Renata Chaplynsky

[www.art-dept.com](http://www.art-dept.com)



# Art Department



Renata Chaplynsky

[www.art-dept.com](http://www.art-dept.com)

# Art Department



Renata Chaplynsky

[www.art-dept.com](http://www.art-dept.com)



# Art Department

style | O

## Look What We Found!

Dials with Style

**WHAT CHIC WRISTS** are wearing now: playful bracelets that sneak in the watch face so gracefully, you barely know it's there.

1. A well-bred black-and-gold-linked bracelet watch looks pricey but isn't. DKNY, \$165.
2. Flextime redefined: Expandable sterling silver cuff—an elegant version of the ordinary metal stretch band—has a diamond-rimmed dial. David Yurman.
3. Pale horn and gold link bracelet with a built-in timepiece has a casual appeal that's great with beige, black, any neutral. Michael Kors, \$160.
4. Gucci's celebrated horsebit motif is translated into a delicate sterling silver bangle with a mother-of-pearl face suspended between sleek curves.
5. Give new meaning to the phrase *watch dog* with a whimsical canine-themed charm bracelet. Moschino Cheap and Chic, \$325.
6. The exquisite minimalism of Movado's classic "museum" watch is echoed in a double row of smaller disks in cool steel and white ceramic.

For details see Shop Guide.

Renata Chaplynsky

[www.art-dept.com](http://www.art-dept.com)



# Art Department

## IN THE COUNTRY



### Flights of Fancy

Every day now, more birds return to the trees, insects buzz in the garden and butterflies flutter about. Among the most welcome signs of spring's arrival, though, is John Derian's series of decoupage wall trays, created from 18th-century European bird engravings. The New York City-based company reproduces the original prints, then hand cuts and hand glues each one behind a piece of glass. Felt or paper is then applied as a backing. \$195 each. John Derian Company, 6 East 2nd Street, 212-677-3917; Bergdorf Goodman, NYC, 800-558-1855.

Renata Chaplynsky

[www.art-dept.com](http://www.art-dept.com)



# Art Department



comfort zone | O

**A VERMEER PALETTE—** deep, rich, painterly shades—mingles with simulations of stately home artifacts (hunting trophies, anyone?) to produce a mixture of traditional and whimsical. The candelabra is made with an old French technique, newly popular, called faux bois—resin, stone, iron, or, most commonly, cement is cast and painted to resemble wood. 1. Resin stag head, \$60, John Derian. 2. Faux-bois five-branch resin candelabra, \$195, Oly. 3. Fake-snake leather journals, \$36 each, Eccolo. 4. Porcelain chestnuts, \$506, Penkridge. 5. Plate with shagreen-pattern trim, \$44, Wedgwood. 6. Faux book in bisque (delicate unglazed porcelain), \$144, Cursive at ABC Carpet & Home. 7. Branch-handled sterling knife, \$136, Austin Creations. 8. Linen-look paper napkin, \$5.50 for 20, Flamant by Caspari. 9. Mahogany-look porcelain cup and saucer, \$86, Marc Blackwell New York. 10. Walnut-look vinyl placemat, \$26, Publique Living. 11. Wood-grain print fabric, \$36 yard, the Silk Trading Co. 12. Porcelain melon, \$175, Penkridge. 13. Marble fruit: peach, brown walnut, dried fig, loquats, grapes, plums, and pear, \$20 to \$55 each, John Derian. 14. Bronze leaves, \$395, Aero. On wall: Library book oil painting, courtesy of John Derian. ▶

Renata Chaplynsky

[www.art-dept.com](http://www.art-dept.com)



# Art Department

comfort zone | **O**

## Great Pretenders

Persuasive paste diamonds. Fruit that invites a bite. Trees you can see through. Phony isn't necessarily baloney: Some copycats can definitely pass for real; others, frankly fake, are a way to have a bit of ironic fun.

**IT'S CRYSTAL CLEAR** that a petrified forest of nature-driven shapes links interior spaces to the great outdoors, reproducing every beautiful whorl, knothole, and feather. Because porcelain and crystal are mainly about texture and reflection, they adapt easily to any color scheme. 1. & 2. Upright tree vase and fallen-log centerpiece, Jeff Zimmerman for Steuben Glass. 3. Porcelain bird, \$12, Cursive at ABC Carpet & Home. 4. Porcelain tree stump with mushrooms (use as a votive-candle or pencil holder), \$25, Roost. 5. Honeycomb-print fabric, \$64 per yard, the Silk Trading Co. ▶



Renata Chaplynsky

[www.art-dept.com](http://www.art-dept.com)



# Art Department



## BREAKFAST TIME

Those crucial minutes between taking a shower and leaving for work tend to go unnaturally fast—which is why you need a bright, cheerful clock to keep you and your family perking along. 1. The "asterisk" clock, by pioneering modernist George Nelson (who hung out with the likes of Isamu Noguchi and Buckminster Fuller), is like a punctuation mark for your wall. George Nelson for Vitra, \$265. 2. There's nothing cutesy about this pared-down cuckoo clock. Artificial, \$433. 3. This black disk with a big red 6 has a playful irony that we could all use during rush hour. Oliver Hemming, \$128. 4. The pleasantly retro orange clock is small, so it eats up less wall space. Infinity Instruments, \$35. 5. This rainbow digital can also be wall-mounted to keep counters free. Brookstone, \$25. 6. Do-it-yourself kit includes multicolor self-adhesive cubes you can stick up in any order you please. Karlsson, \$79. 7. This buttery circle will melt even the morning-phobic. Alessi, \$134. Cup and saucer, Apilco Tuilleries, French press, Bonjour. Juice glass and bowl, Nicole Farhi Home.

[CONTINUED ON PAGE 180]

Renata Chaplynsky

[www.art-dept.com](http://www.art-dept.com)



# Art Department

style *bome* | O

**WORKTIME**

What you want is clarity, information, and nice, clean lines—which doesn't rule out innovative shapes or juicy color. A playfully designed timepiece can actually make a task feel less onerous.

1. The sunflower clock was originally designed by George Nelson in 1958; its open construction lets the wall color show through. George Nelson, \$965. 2. Gold-plated and extravagant, this is an instant heirloom. Jaeger-LeCoultre. 3. Get the temperature and barometric pressure along with the time. Ralph Lauren Home. 4. Reward yourself for a promotion with an upscale brass swing clock. Tiffany & Co., \$725. 5. Sleek 1948 design (also by George Nelson) puts time on a pedestal. George Nelson, \$365. 6. For music with your coffee break, try a vintage-looking clock-radio. Tivoli Audio, \$200. 7. Oversize jumbled numbers on an orange square might counteract 4 o'clock slump. Dario Serio for Nava Milano, \$98. Jewel box with travel tray, Smythson of Bond Street. Desk blotter and pen, Graphic Image. [CONTINUED ON PAGE 182]

Renata Chaplynsky

www.art-dept.com



# Art Department

style *home* | O

## Good Timing

We're all wound up about these chic new timepieces: Whether you're eating, sleeping, working, or flying off into the wild blue yonder, they'll ensure that your schedule is in good hands.



### BEDTIME

Sweet dreams are your respite from the day's stress—so a bedside clock should be discreetly elegant yet spirited enough to rouse you gently and thoroughly when morning comes.

1. An old-fashioned bell ringer

is encased in a block of Lucite—a nifty mix of vintage and modern. McCollin Bryan, \$248. 2. This neat, super-legible little tool lights up at night. BAI, \$28. 3. A square, silver-finish molded plastic digital is self-setting. Philippe Starck for Oregon Scientific, \$63. 4. It not only tells time

but charges your iPod and wakes you up painlessly to the tunes you love. Fashionation, \$40.

5. Double-time alarm has an easy-to-read face inside, a tiny "museum watch" dial on the cover. Movado Collection, \$80. 6. A limited edition black-and-white

clock, inspired by a backgammon board, is as chic as a Turner Classic movie. Cartier, \$1,300. Eyeglasses, Versace. Lamp, Aero. Chair and bedside table, Baker. Carafe, Nicole Farhi Home. Glass, Riedel. Boxes, Barbara Barry. Realized by Henredon. ➤

Renata Chaplynsky

www.art-dept.com



# Art Department

*Love That!*

Customize a vintage classic with any color dial you choose. (Rolex by wannabuyawatch.com, \$3,650)

This long leather strap wraps around the wrist like a bracelet. (Hermès, \$2,425)

A delicate brass band and slender oval face have timeless charm. (Elgin, \$120)

A bold, masculine chronograph takes a ladylike turn in plated rose gold. (Michael Kors, \$250)

Look What We Found!

*The New Nudes*  
Pale and pretty tickers that are perfect for everyday wear.

An unusual windowpane strap reveals a layer of bronze leather. (Movado, \$695)

The pearlescent band looks gorgeous with every skin tone. (Coach, \$198)

For details see Shop Guide.

104 OPRAH.COM OCTOBER 2010

Renata Chaplynsky

www.art-dept.com



# Art Department

**Understated luxury** from a much-loved jeweler: The softly squared dial features diamond hour-markers. (David Yurman, \$1,760)

**The stainless steel dial and metallic leather strap** give this monochromatic watch a shot of glitz. (Coach, \$198)

**A textured silicone strap** takes the style of this simple piece up a tick. (Swatch, \$75)

**This elegant watch** with embossed leather strap and timer subdials is one for the ages. (Georg Jensen, \$1,850)

**Sporty, durable plastic links** make this a great weekend choice. (Freelook, \$150)

**Look What We Found!**  
*Gray Matter*  
Sleek watches in smoky colors set the tone for fall.

PHOTOGRAPH BY SANG AN

OCTOBER 2010 | OPRAH.COM 103

Renata Chaplynsky

[www.art-dept.com](http://www.art-dept.com)



# Art Department

style|O

Look What We Found! Stud Power

► MORE PARK AVENUE than punk rock, this season's civilized studs add cool embellishment and texture to accessories. Use judiciously: One touch gives a chic little edge; more leads to biker-chick overkill. 1. Riveting clutch has a subtly industrial feeling. Chinese Laundry Bags, \$41. 2. Iron-colored water-snake skin purse has an ingenious folded construction so it opens like a book. Bottega Veneta, \$780. 3. Soft suede T-strap meets sleek, steely studs. Michael Michael Kors, \$119. 4. Fantastic with gray, metallic leather belt has a sculptural buckle. Orciani, \$266. 5. Geometric detail adds unglitzy glamour to a leather glove. Alberta Ferretti, \$565. 6. Red resin makes a studded cuff bold and cheery rather than tough. Nine West, \$28. 7. Distressed leather covering larger studs adds splendid new facets to a day clutch. Joe's Jeans, \$295. 8. Gold pyramids look dressier than silver on a red double-wrap belt (try it over a sweater). Hayden-Harnett, \$179. 9. Elasticized silver ballerinas are a brilliant heel alternative. Nine West, \$79. 10. Give a lift to ordinary clothes with a slight wedge heel in trendy, shiny purple. Rocket Dog, \$55. ►

Renata Chaplynsky

[www.art-dept.com](http://www.art-dept.com)



# Art Department

Look What We Found!  
*Crafty Quilting*

style

THE FOLKSY ASPECT of quilting makes it reassuring—this, after all, is the handiwork that's historically warmed our beds—but thanks to a certain famous chain-strap bag, it also evokes timeless French chic.

1. Tuck a fuchsia satin belt in your everyday tote; after 5 it does an evening number on the simple black separates you wore to work. Nine West, \$42.

2. Cute, stretchy boots are a boon for larger calves and tighter budgets. SoHo Lab, \$69.

3. You may think you're cloud-walking in these cushiony pink satin flats. Corso Como, \$145.

4. Diamond stitching sparks a teal satin purse. Liz Claiborne Handbags, \$38.

5. Large clutch in a deep, rich purple feels luscious in the hand. BCBG Max Azria, \$198.

6. Racecar-red patent leather gloves add new gloss to an old jacket. Holt Renfrew, \$156. For details see Shop Guide.

Renata Chaplynsky

[www.art-dept.com](http://www.art-dept.com)