

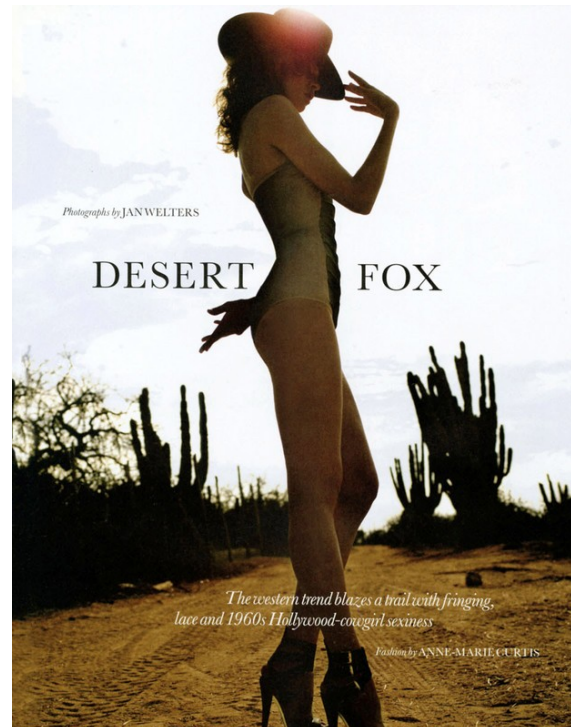
Art Department



Jonathan Connelly

www.art-dept.com

Art Department



Jonathan Connelly

www.art-dept.com

Art Department



Jonathan Connelly

www.art-dept.com

Art Department



Jonathan Connelly

www.art-dept.com

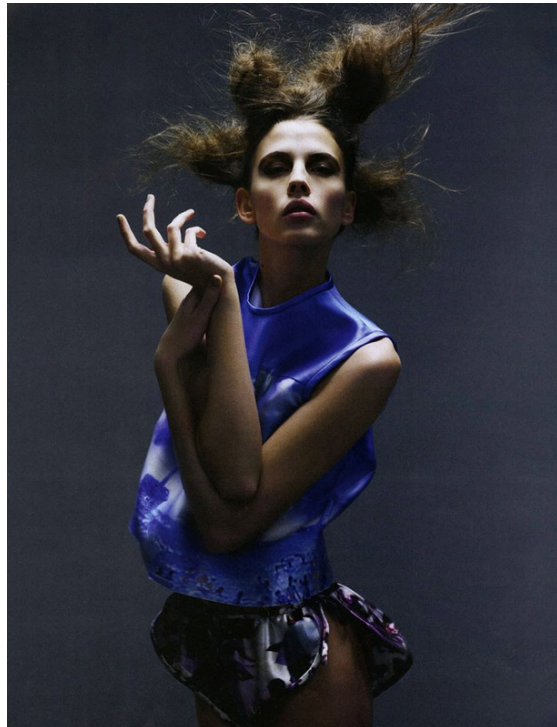
Art Department



Jonathan Connelly

www.art-dept.com

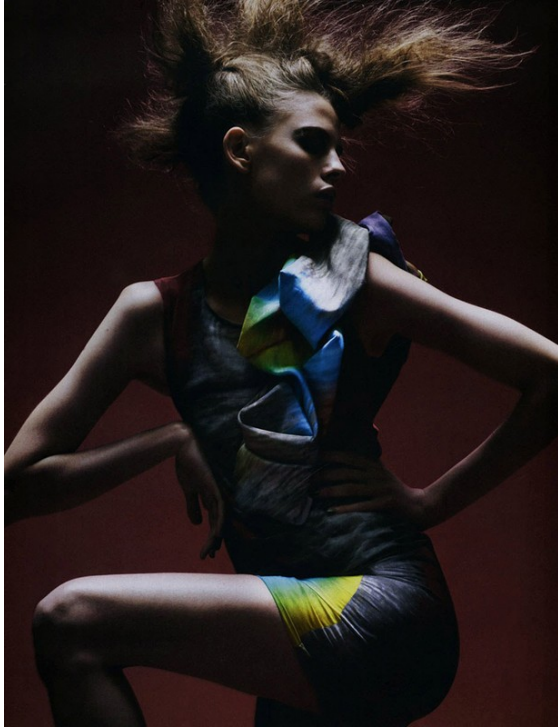
Art Department



Jonathan Connelly

www.art-dept.com

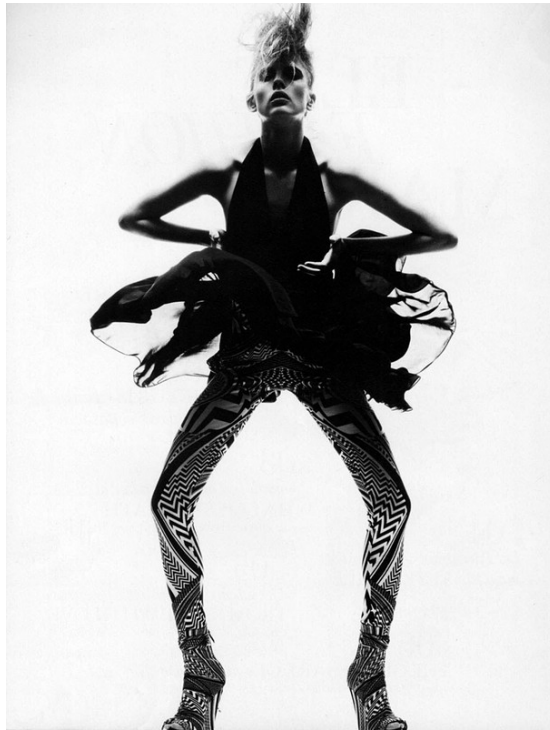
Art Department



Jonathan Connelly

www.art-dept.com

Art Department



Jonathan Connelly

www.art-dept.com

Art Department

MIRAGGI DI NYLON

Nel deserto. Tessuti tecnici e volumi
liquidi. Foto di Jan Witten
Gioia: monastero di Santa Marcella,
Jost Cavali. Abito a canotta di viscosa a righe,
Vivienne Westwood Anglomania. Leggings,
Calzedonia. Stivali di pelle, Levi's.



Abiti: Purgatori, C'W. Camicie:
National. Abito di seta sintetica:
Emilio Pucci. Collare, Björk:
Fassina. Camicetta, Sordani.
Vestito: Pagine Accanto. Tulle:
a sinistra di eleganza e raffinatezza,
Hassan Chahine. Collare
e spallina con chitarra, Gilt.
Sandali con tacco, Massimo.

Jonathan Connelly

www.art-dept.com

Art Department



Jonathan Connelly

www.art-dept.com

Art Department



Jonathan Connelly

www.art-dept.com

Art Department



Jonathan Connelly

www.art-dept.com

Art Department



Jonathan Connelly

www.art-dept.com

Art Department



Jonathan Connelly

www.art-dept.com

Art Department



Jonathan Connelly

www.art-dept.com

Art Department



ECCENTRICI
MIX: SEGNALI
DI UNA NUOVA
TRADIZIONE
ARISTO-CHIC
Foto: Christophe Ribot
Servizio: Anett Monheim



Jonathan Connelly

www.art-dept.com

Art Department



Jonathan Connelly

www.art-dept.com

Art Department



Jonathan Connelly

www.art-dept.com

Art Department



Jonathan Connelly

www.art-dept.com

Art Department



Atsuro Tayama

A gauche :
chercher à cet amovible en noir.
A droite :
Mourir en noir sous
un pull en angora,
et jouer en pantin de velours.



Jonathan Connelly

www.art-dept.com

Art Department



Jonathan Connelly

www.art-dept.com

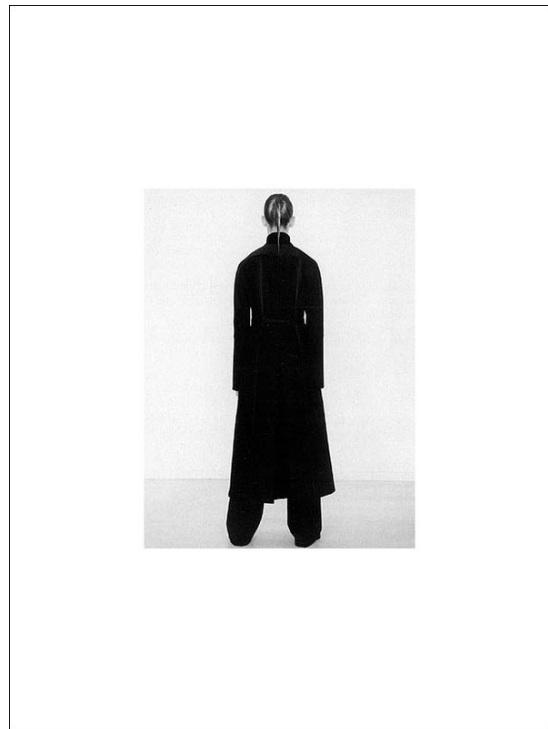
Art Department



Jonathan Connelly

www.art-dept.com

Art Department



Jonathan Connelly

www.art-dept.com

Art Department



Jonathan Connelly

www.art-dept.com

Art Department



Jonathan Connelly

www.art-dept.com

Art Department



Jonathan Connelly

www.art-dept.com

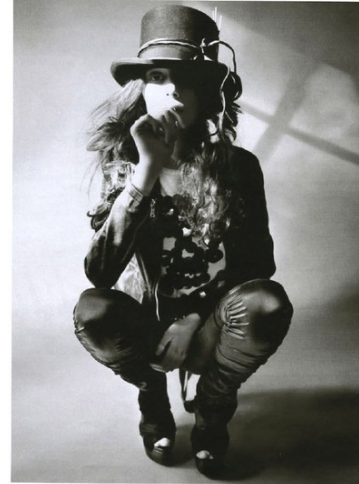
Art Department



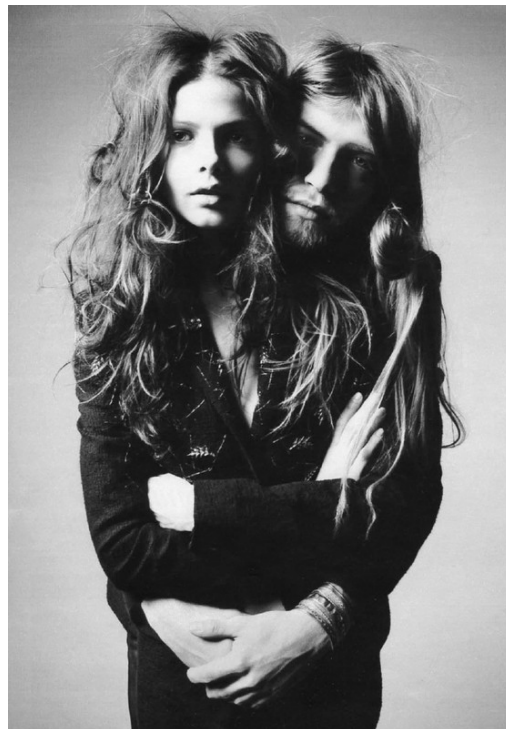
Jonathan Connelly

www.art-dept.com

Art Department



Chiodo di pelle con zip abrasa. Bugli
Falso. T-shirt con paillettes. United Colors
of Benetton. Lungopigi di jeans. Taperia
Santini con botte. Quercia by R. Ricci.
Panna accapito. Redgrave di cotone con
lapislazzuli. High. Goff di cotone
e alato soffocante a multibotolo di fusto con
pizzo e paretto. Antonio Maria.
Lungopigi di jeans. Taperia. Lino. Cuccini. Ha
contatore. Natta Baresi. Taperia. Jansen
Braun. Poltrona. Jonathan Connelly.



Jonathan Connelly

www.art-dept.com

Art Department



A sinistra: Giubbotto di pelle con collo alto con bottoni. Pantaloni Pepe, body a fasci e scarpia di jersey tricot, Missoni, jeans di jersey, Pirelli, scarpe di cuoio patchwork con plateau scultorei, Versace. Sopra: Cappello, Borsa, Pigiama scuro. T-shirt di jersey con spalle scollate e top attorcigliato, Liu-Jo.



Giacca di pelle da motociclista, Blauer. Per modellare il collo e il busto il body è messo dai capelli. Shrug Missoni Modestia. Pigiama Pepe. Pantaloni di jersey. Pigiama scuro. Robe-manteau di cotone con bottoni di tutte le forme e applicazioni di perline sulle spalle. Borsa Liu-Jo. Cappello di tessuto patchwork. Etsi, paillettes. Unisex Colors di Benetton.



Jonathan Connelly

www.art-dept.com