

# Art Department



Aya Kanai

[www.art-dept.com](http://www.art-dept.com)

# Art Department



Aya Kanai

www.art-dept.com



# Art Department



Aya Kanai

[www.art-dept.com](http://www.art-dept.com)

# Art Department

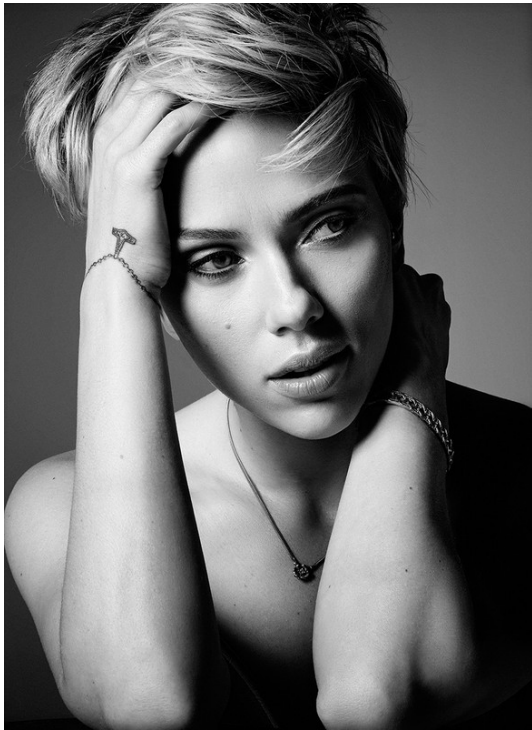


Aya Kanai

[www.art-dept.com](http://www.art-dept.com)



# Art Department



Aya Kanai

[www.art-dept.com](http://www.art-dept.com)

# Art Department



Aya Kanai

[www.art-dept.com](http://www.art-dept.com)



# Art Department



Aya Kanai

[www.art-dept.com](http://www.art-dept.com)

# Art Department



Aya Kanai

[www.art-dept.com](http://www.art-dept.com)



# Art Department



Aya Kanai

[www.art-dept.com](http://www.art-dept.com)

# Art Department

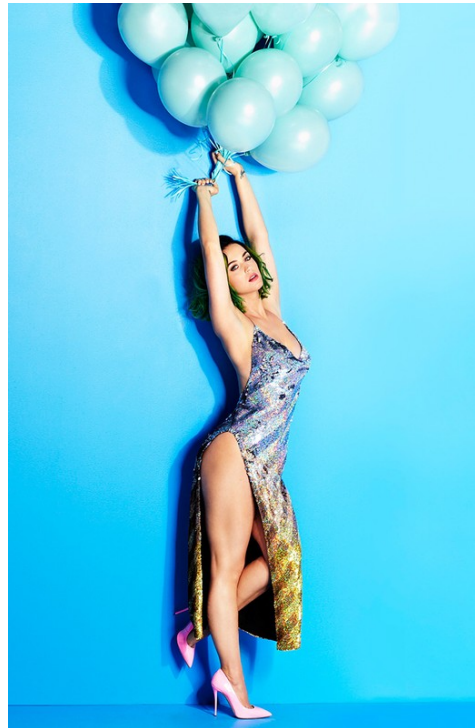


Aya Kanai

[www.art-dept.com](http://www.art-dept.com)



# Art Department



Aya Kanai

www.art-dept.com

# Art Department



Aya Kanai

[www.art-dept.com](http://www.art-dept.com)



# Art Department



Aya Kanai

[www.art-dept.com](http://www.art-dept.com)

# Art Department



Aya Kanai

[www.art-dept.com](http://www.art-dept.com)



# Art Department



Swimsuit, Osklen Praia A&B. Headband, Cult Gaia. Earrings, Aurélie Bidermann. Necklace, Uribe. Lucite bracelets, Maria Francesco Pepe. Sunglasses, OSquared2.



OPPOSITE PAGE: Dress, Marc Jacobs. Clutch, Elena Ghisellini. Shoes, Jimmy Choo. Cuffs, Arme de L'Amour. Bracelets (left arm, worn throughout); Bella's own Tiffany & Co., (right arm, thin bracelet, worn throughout); Bella's own Cartier THIS PAGE: Crop top, Clover Canyon. Skirt, Christian Siriano. Shoes, Alexandre Birman. Clutch, Mark Cross. Necklaces, Hearts on Fire. Rings, Maria Francesca Pepe



**Jacket, pants, Stills**  
McCartney Top By  
Johnny Shores, Christian  
Louboutin, Rag & Coach,  
Sunglasses, Marc Jacobs

**Hair:** Mark Townsend at  
StarworksArtists.com.  
**MAKEUP:** Jillian Dempsey  
for The Wall Group.  
**MANICURE:** Kimmie  
Kyees for Celestine  
Agency. **PRODUCTION:**  
Michelle Hynes for First  
Step Productions.  
See page 210 for shopping  
information.

Aya Kanai

www.art-dept.com



# Art Department



Aya Kanai

www.art-dept.com



# Art Department



Aya Kanai

[www.art-dept.com](http://www.art-dept.com)

# Art Department



Aya Kanai

[www.art-dept.com](http://www.art-dept.com)



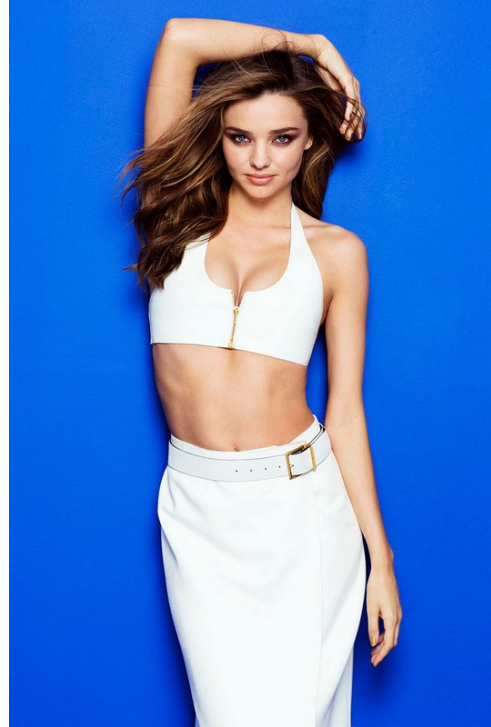
# Art Department



Aya Kanai

[www.art-dept.com](http://www.art-dept.com)

# Art Department



Aya Kanai

[www.art-dept.com](http://www.art-dept.com)



# Art Department



Aya Kanai

[www.art-dept.com](http://www.art-dept.com)



# Art Department



Aya Kanai

[www.art-dept.com](http://www.art-dept.com)



# Art Department



Aya Kanai

[www.art-dept.com](http://www.art-dept.com)

# Art Department



Aya Kanai

[www.art-dept.com](http://www.art-dept.com)



# Art Department



"MY FAVORITE THING TO DO IS PLAY THE CHARACTER WHO MAKES OUT AT THE BAR. I LOVE FAKE, GROSS KISSING."

KATE MCKINNON, 30

WHAT ALWAYS MAKES YOU LAUGH? The sounds that goats and sheep make when they scream the men. I cannot keep myself together when I hear that. YOU DO A KILLER JUSTIN BIEBER. WHAT WOULD YOU SAY TO HIM RIGHT NOW? I'd get very serious with him and say, "You are good. Hang in there, pal. I love you. You have a core of goodness."

WHAT'S A FAIRLY PROOF SOURCE OF MATERIAL FOR YOU? Weird people doing and. Like local news stories of a woman wearing a hamburger dress or just people behaving strangely.

FAVORITE SKETCH? My favorite thing to do is play the character who makes out with people at the bar. I love fake, gross kissing. I've kissed Vince Vaughn and John Goodman. Louis C.K. was great. He was the first, but they were all great in their own ways. It takes a special man to put himself in that situation.



Robe: \$405; nighgown: \$905; Kate McKinnon shoes: Alexander McQueen; \$650; necklace: Kate's own

## Aya Kanai

www.art-dept.com



# Art Department

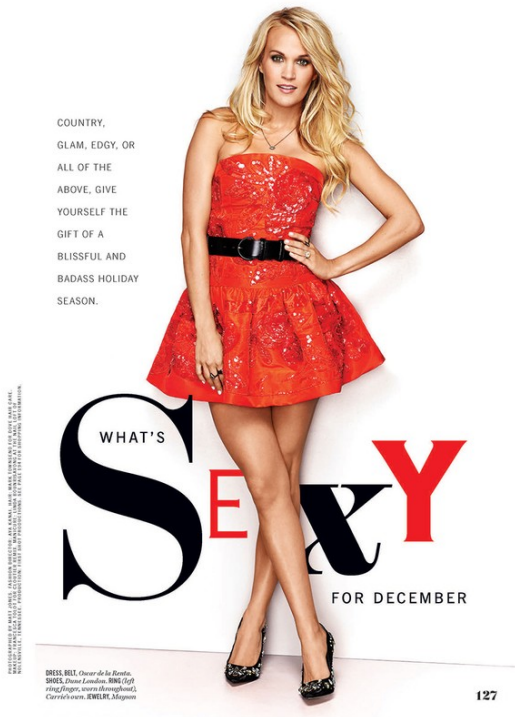


Aya Kanai

[www.art-dept.com](http://www.art-dept.com)



# Art Department



Aya Kanai

www.art-dept.com

# Art Department



Aya Kanai

[www.art-dept.com](http://www.art-dept.com)



