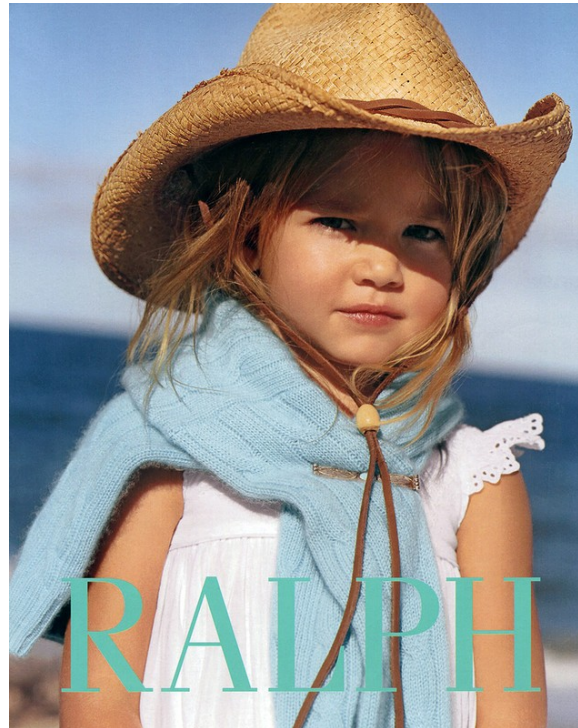
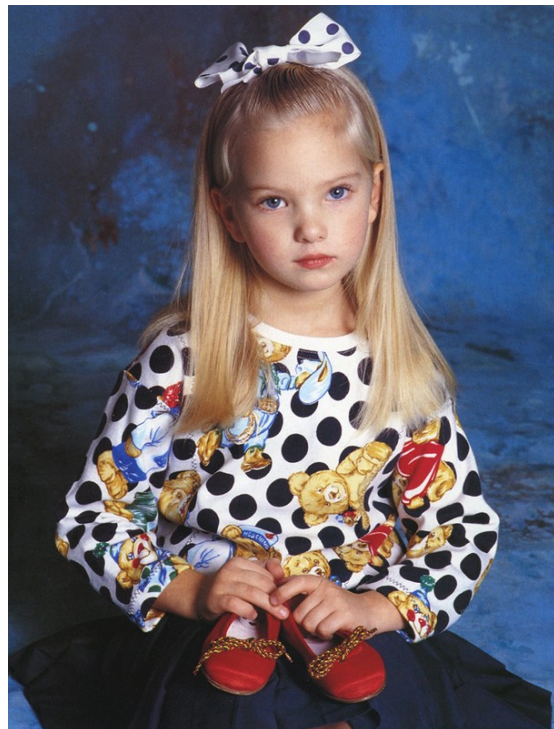


# Art Department



Sandrine Van Slee

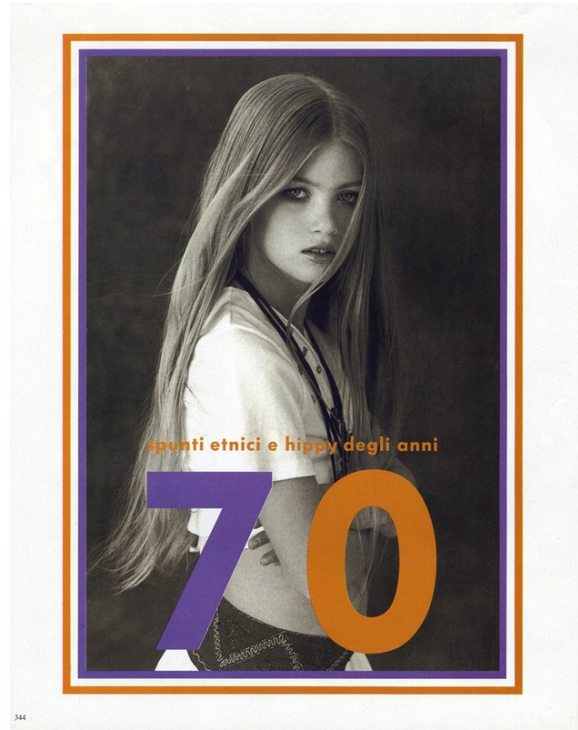
# Art Department



Sandrine Van Slee

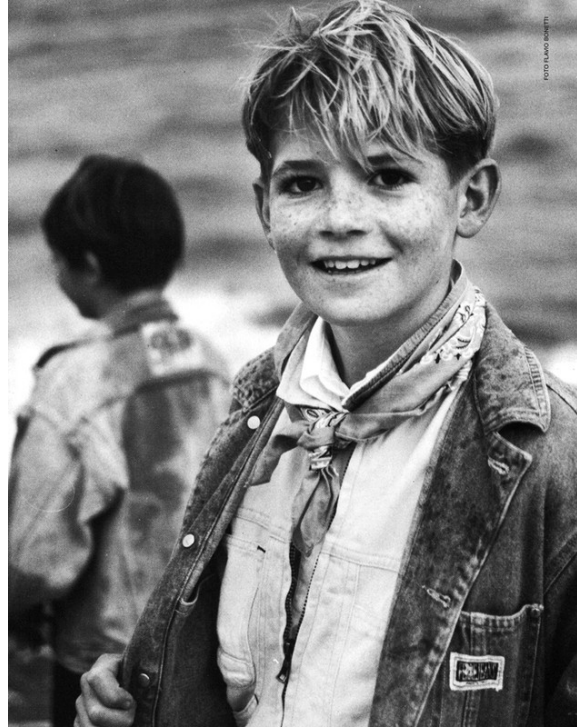
[www.art-dept.com](http://www.art-dept.com)

# Art Department



Sandrine Van Slee

# Art Department



In questo pagina: cordigon in felpe di Essagi; com-  
micia fantasia (Ovrogan). Nella pagina accanto:  
montgomery scozzese e gamba a ruota in velluto  
liscio di Imasido & Stefano Cavallari; I Pince  
Pallino, cordigon in felpe (Bill e Teddy Milton);  
calze (Malerba); scarpantini (Sulhannino Spring).

Sandrine Van Slee

[www.art-dept.com](http://www.art-dept.com)