

# Art Department



Alison Edmond

[www.art-dept.com](http://www.art-dept.com)

# Art Department



Alison Edmond

[www.art-dept.com](http://www.art-dept.com)



# Art Department



Alison Edmond

[www.art-dept.com](http://www.art-dept.com)



# Art Department

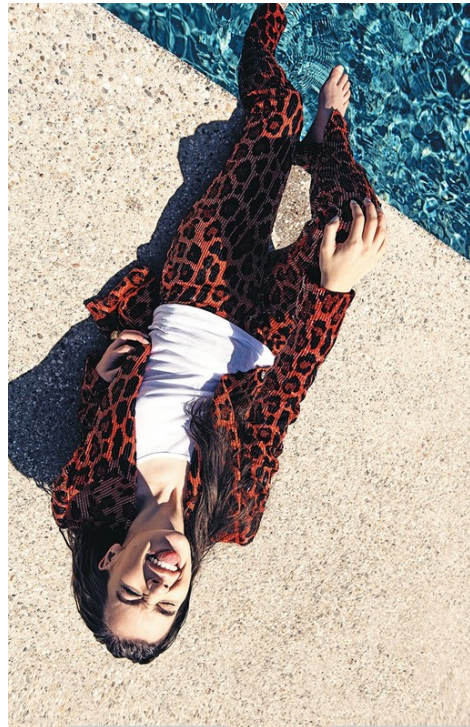


Alison Edmond

[www.art-dept.com](http://www.art-dept.com)



# Art Department



Alison Edmond

[www.art-dept.com](http://www.art-dept.com)



# Art Department



Alison Edmond

[www.art-dept.com](http://www.art-dept.com)



# Art Department



Alison Edmond

[www.art-dept.com](http://www.art-dept.com)

# Art Department



Alison Edmond

[www.art-dept.com](http://www.art-dept.com)



# Art Department



In the arid dreamscape of Vasquez Rocks, Rosie Huntington-Whiteley talks California living and why she's becoming a beauty magnate

Words by ELIZABETH DAY Photography by ZOEY GROSSMAN Creative & Fashion Direction by ALISON EDMOND



## Alison Edmond

[www.art-dept.com](http://www.art-dept.com)



# Art Department



Alison Edmond

[www.art-dept.com](http://www.art-dept.com)



# Art Department



Alison Edmond

[www.art-dept.com](http://www.art-dept.com)

# Art Department



Alison Edmond

[www.art-dept.com](http://www.art-dept.com)



# Art Department



Alison Edmond

[www.art-dept.com](http://www.art-dept.com)

# Art Department



Alison Edmond

[www.art-dept.com](http://www.art-dept.com)



# Art Department



Alison Edmond

[www.art-dept.com](http://www.art-dept.com)



# Art Department

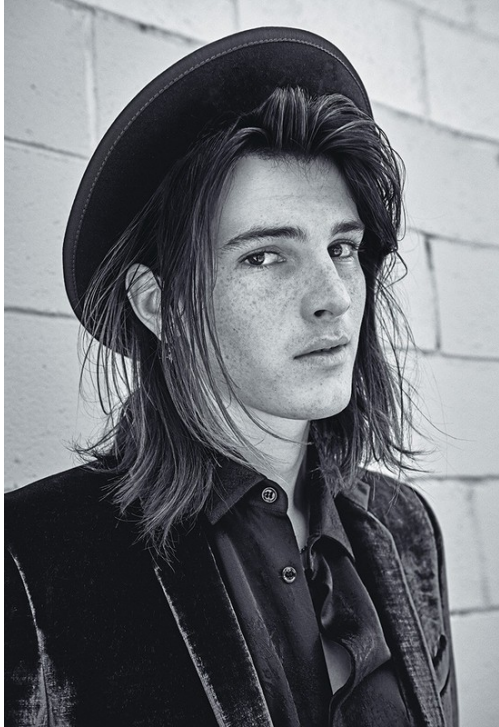


Alison Edmond

[www.art-dept.com](http://www.art-dept.com)



# Art Department



Alison Edmond

[www.art-dept.com](http://www.art-dept.com)



# Art Department

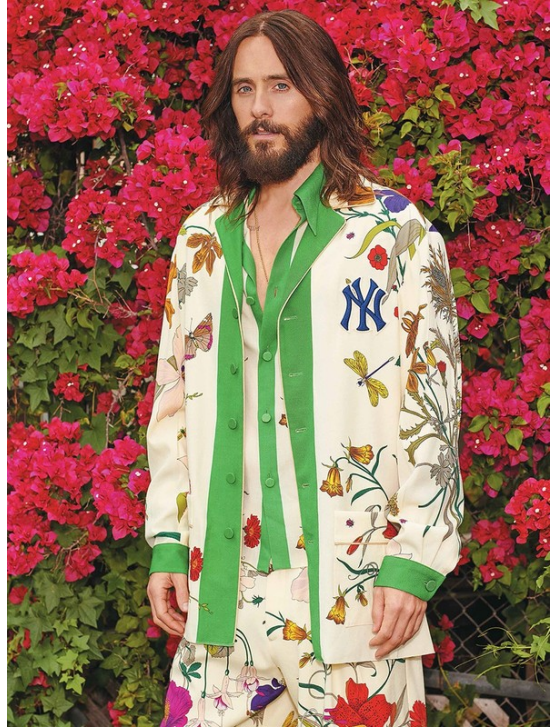


Alison Edmond

[www.art-dept.com](http://www.art-dept.com)



# Art Department



Alison Edmond



# Art Department



Alison Edmond

[www.art-dept.com](http://www.art-dept.com)



# Art Department



WITH THEIR STARS IN THE ASCENDANT, KENYA KINSKI-JONES AND WILL PELTZ ARE TWO OF HOLLYWOOD'S FRESHEST TALENTS. WATCH THESE FACES

Pretty Things

PHOTOGRAPHY BY CARTER SMITH  
STYLING BY ALISON EDMOND  
WRITTEN BY ELIZABETH VARNELL

## Alison Edmond

www.art-dept.com

# Art Department



Alison Edmond

[www.art-dept.com](http://www.art-dept.com)



# Art Department



Alison Edmond

[www.art-dept.com](http://www.art-dept.com)



# Art Department



Alison Edmond

[www.art-dept.com](http://www.art-dept.com)



# Art Department



## Alison Edmond

[www.art-dept.com](http://www.art-dept.com)



# Art Department



Alison Edmond

[www.art-dept.com](http://www.art-dept.com)



# Art Department



Alison Edmond

[www.art-dept.com](http://www.art-dept.com)



# Art Department



Alison Edmond

[www.art-dept.com](http://www.art-dept.com)



# Art Department



Alison Edmond

[www.art-dept.com](http://www.art-dept.com)



# Art Department



Alison Edmond

[www.art-dept.com](http://www.art-dept.com)



# Art Department



Alison Edmond

[www.art-dept.com](http://www.art-dept.com)



# Art Department



Alison Edmond

[www.art-dept.com](http://www.art-dept.com)



# Art Department



Alison Edmond

[www.art-dept.com](http://www.art-dept.com)



# Art Department



Alison Edmond

[www.art-dept.com](http://www.art-dept.com)



# Art Department



Alison Edmond

[www.art-dept.com](http://www.art-dept.com)



# Art Department



Alison Edmond

[www.art-dept.com](http://www.art-dept.com)



# Art Department



Alison Edmond

[www.art-dept.com](http://www.art-dept.com)



# Art Department



Alison Edmond

[www.art-dept.com](http://www.art-dept.com)



# Art Department

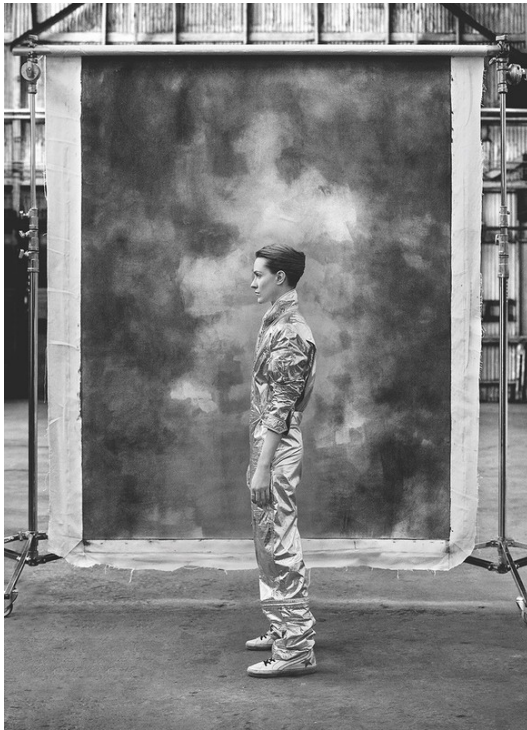
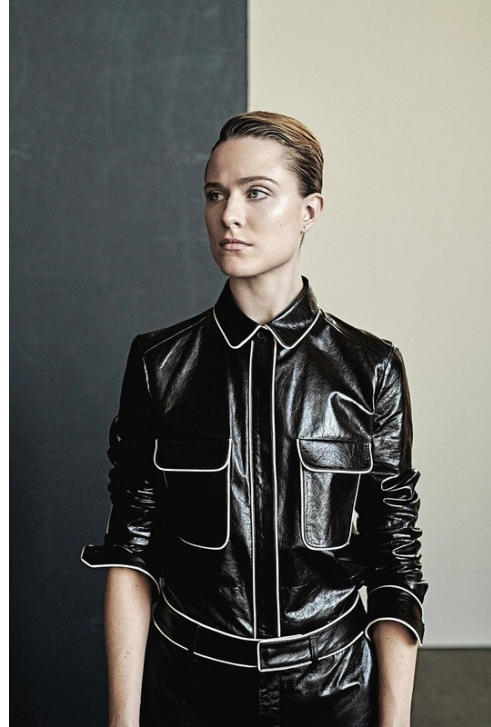


Alison Edmond

[www.art-dept.com](http://www.art-dept.com)



# Art Department



Alison Edmond

[www.art-dept.com](http://www.art-dept.com)



# Art Department



Alison Edmond

[www.art-dept.com](http://www.art-dept.com)



# Art Department

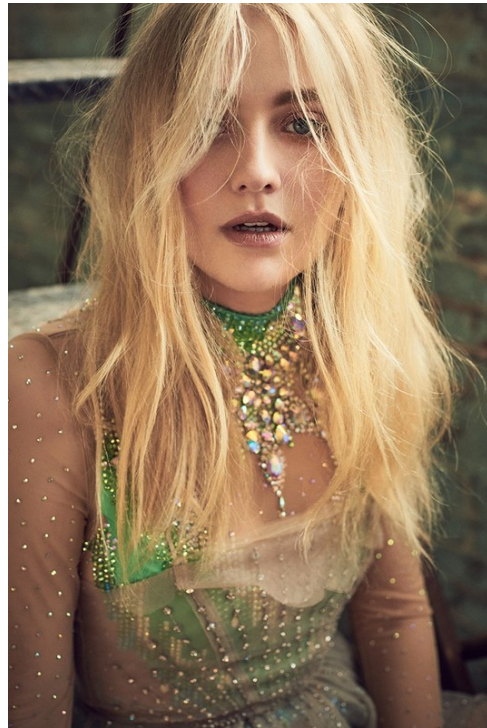


## Alison Edmond

[www.art-dept.com](http://www.art-dept.com)



# Art Department



Alison Edmond

[www.art-dept.com](http://www.art-dept.com)



# Art Department



Alison Edmond

[www.art-dept.com](http://www.art-dept.com)



# Art Department



Alison Edmond

[www.art-dept.com](http://www.art-dept.com)



# Art Department

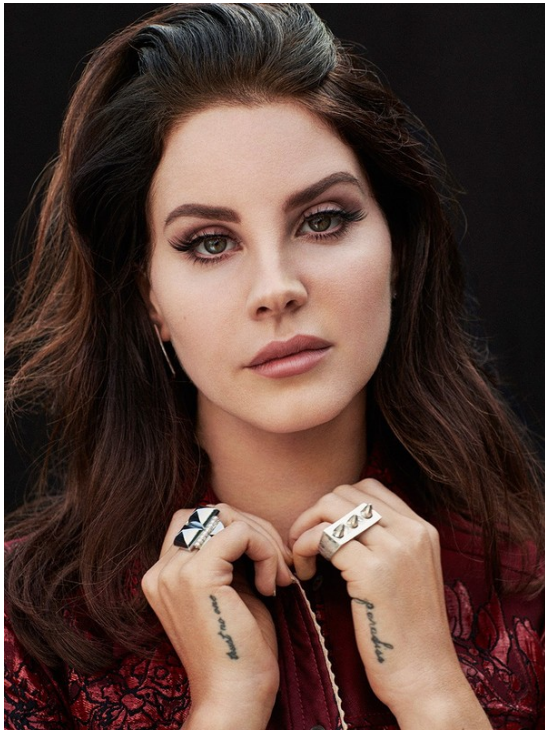


## Alison Edmond

[www.art-dept.com](http://www.art-dept.com)



# Art Department



Alison Edmond

[www.art-dept.com](http://www.art-dept.com)



# Art Department



## Alison Edmond

[www.art-dept.com](http://www.art-dept.com)



# Art Department



Alison Edmond

[www.art-dept.com](http://www.art-dept.com)



# Art Department

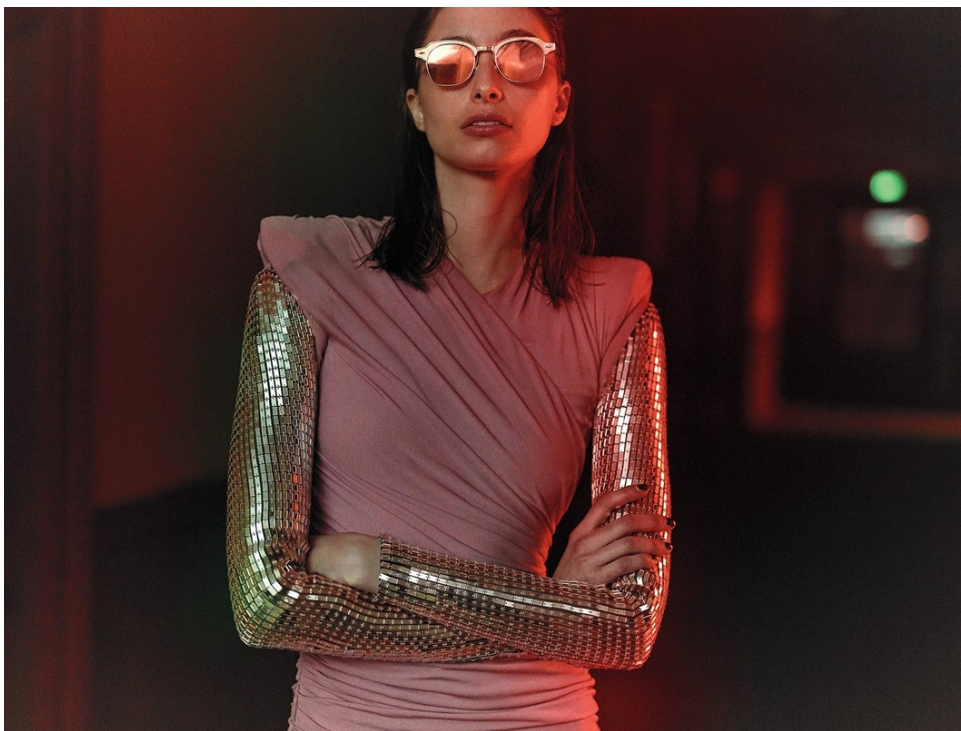


Alison Edmond

[www.art-dept.com](http://www.art-dept.com)



# Art Department



Alison Edmond

[www.art-dept.com](http://www.art-dept.com)



# Art Department



Alison Edmond

[www.art-dept.com](http://www.art-dept.com)



# Art Department



Alison Edmond

[www.art-dept.com](http://www.art-dept.com)



# Art Department



Alison Edmond

[www.art-dept.com](http://www.art-dept.com)



# Art Department



Alison Edmond

[www.art-dept.com](http://www.art-dept.com)



# Art Department

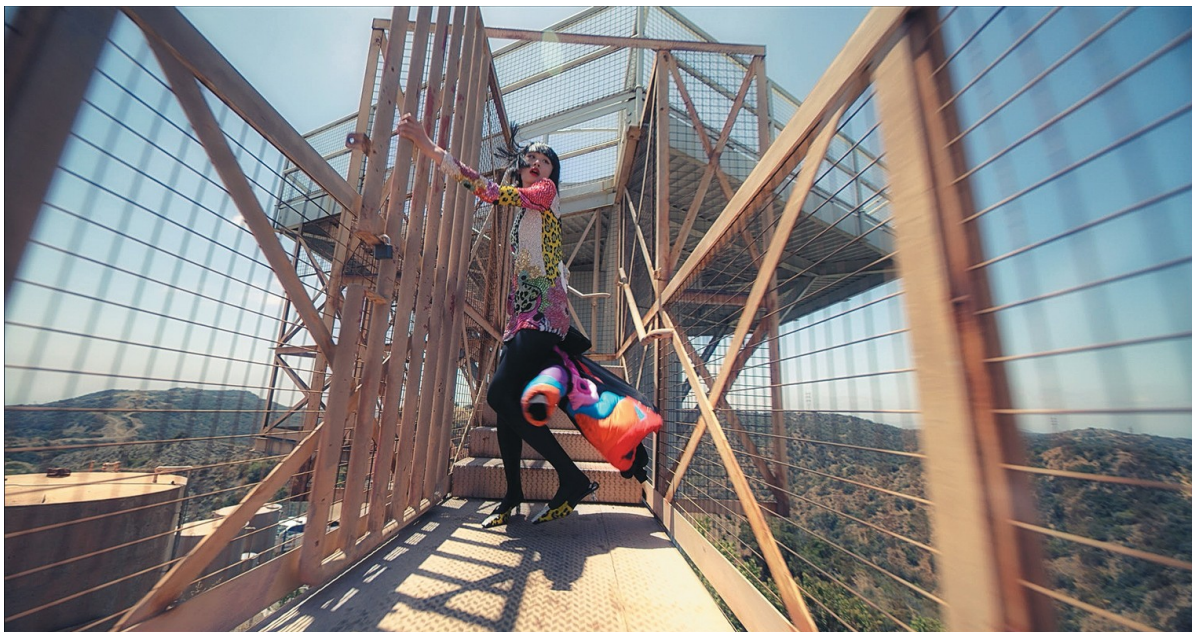


Alison Edmond

[www.art-dept.com](http://www.art-dept.com)



# Art Department



Alison Edmond

[www.art-dept.com](http://www.art-dept.com)



# Art Department



Alison Edmond

[www.art-dept.com](http://www.art-dept.com)



# Art Department



Alison Edmond

[www.art-dept.com](http://www.art-dept.com)



# Art Department



Alison Edmond

[www.art-dept.com](http://www.art-dept.com)



# Art Department



Alison Edmond

[www.art-dept.com](http://www.art-dept.com)



# Art Department



Alison Edmond

[www.art-dept.com](http://www.art-dept.com)



# Art Department



## Alison Edmond

www.art-dept.com



# Art Department

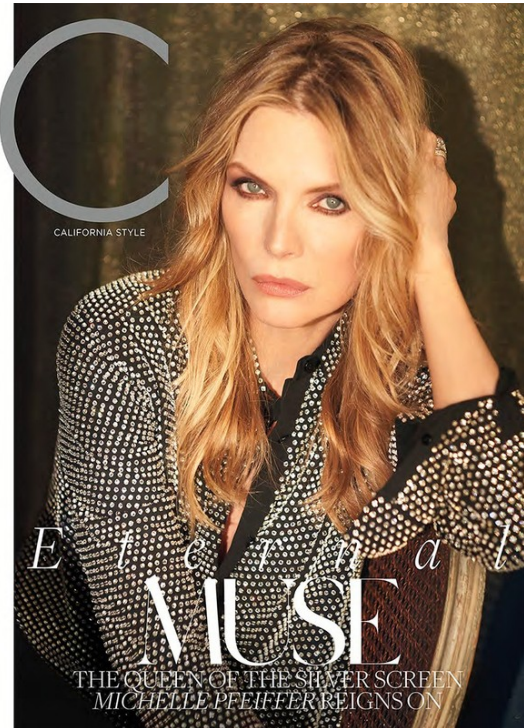


Alison Edmond

[www.art-dept.com](http://www.art-dept.com)



# Art Department



## Gold Standard

After trading Hollywood for a slower pace in Northern California, *Michelle Pfeiffer* makes a dazzling *big-screen* comeback

PHOTOGRAPHY BY KURT ISWARIENKO  
STYLING BY ALISON EDMOND  
WRITTEN BY CHRISTINE LENNON



## Alison Edmond

[www.art-dept.com](http://www.art-dept.com)



# Art Department



Alison Edmond

[www.art-dept.com](http://www.art-dept.com)



# Art Department



Alison Edmond

[www.art-dept.com](http://www.art-dept.com)



# Art Department



Alison Edmond

[www.art-dept.com](http://www.art-dept.com)



# Art Department



## Finding New Ground

For Rodarte designers *Kate and Laura Mulleavy's* first feature film, it was only natural that they tapped their best friend *Kirsten Dunst* for the starring role—but they say she's actually the *only person* who could have played the part. *C* sat down with the trio to recap their collaboration on *Woodshock*, which was set deep within an *old-growth forest* in Northern California

PHOTOGRAPHY BY KURT ISWARIENKO  
STYLING BY ALISON EDMOND  
WRITTEN BY KELSEY MCKINNON

## Alison Edmond

[www.art-dept.com](http://www.art-dept.com)



# Art Department



Alison Edmond

[www.art-dept.com](http://www.art-dept.com)



# Art Department



Alison Edmond

[www.art-dept.com](http://www.art-dept.com)



# Art Department



Rising  
Hollywood  
ingenue *Eiza  
González*  
showcases  
the season's  
*megawatt  
gems and  
bombshell  
hair*

## Portrait *of a* LADY

PHOTOGRAPHY BY ALISTAIR TAYLOR-YOUNG  
STYLING BY ALISON EDMOND  
HAIR BY CHRIS McMILLAN



CARTIER ring (from left) price upon request and \$44,400, and bracelet,  
price upon request. TOP'S blouse, \$500.

## Alison Edmond

[www.art-dept.com](http://www.art-dept.com)



# Art Department



Alison Edmond

[www.art-dept.com](http://www.art-dept.com)



# Art Department



Alison Edmond

[www.art-dept.com](http://www.art-dept.com)



# Art Department

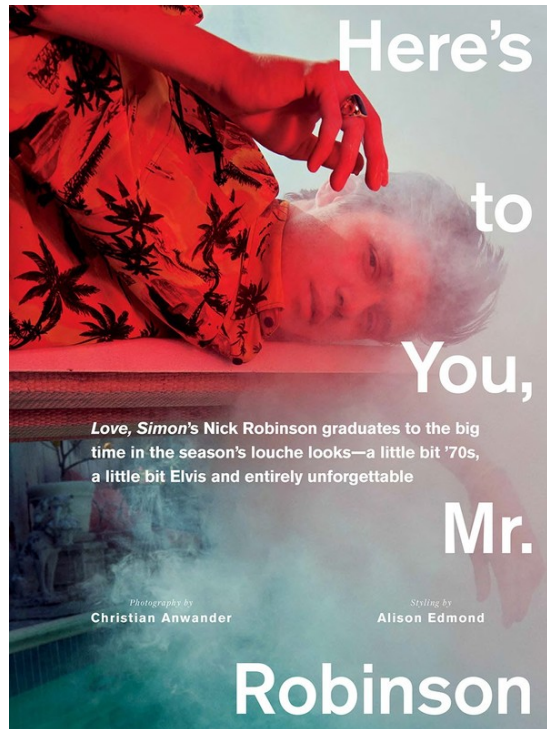


Alison Edmond

[www.art-dept.com](http://www.art-dept.com)



# Art Department

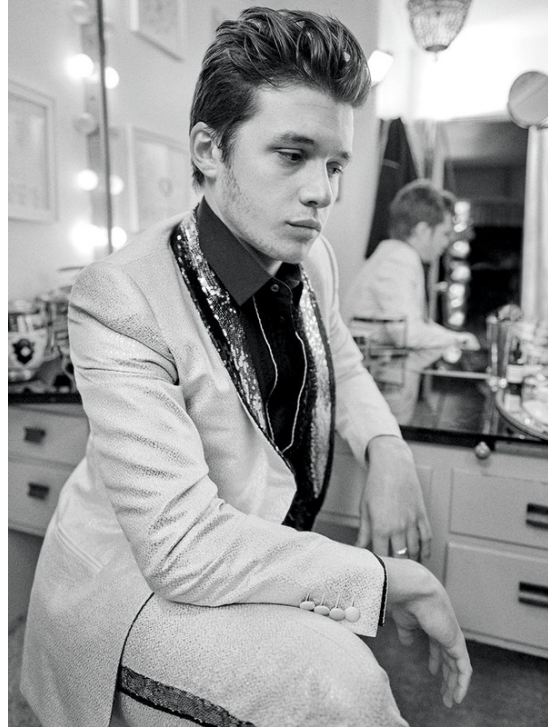


Alison Edmond

[www.art-dept.com](http://www.art-dept.com)



# Art Department



Alison Edmond

[www.art-dept.com](http://www.art-dept.com)



# Art Department



Alison Edmond

[www.art-dept.com](http://www.art-dept.com)



# Art Department



## Alison Edmond

[www.art-dept.com](http://www.art-dept.com)



# Art Department

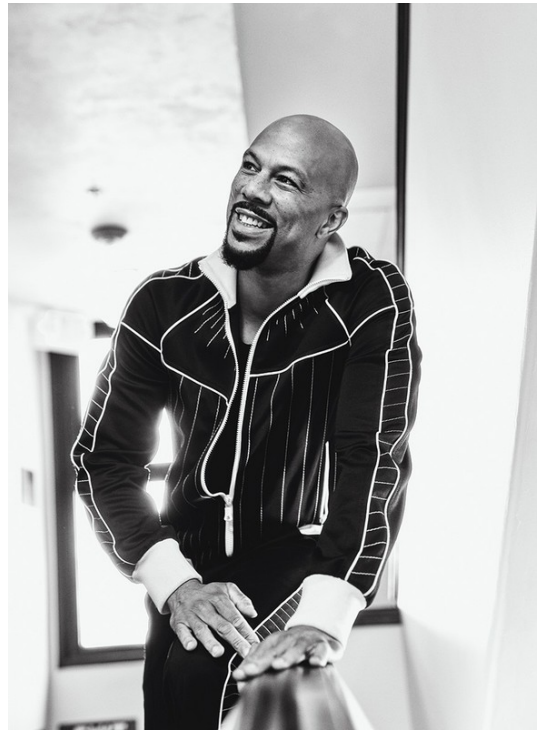


Alison Edmond

[www.art-dept.com](http://www.art-dept.com)



# Art Department



Alison Edmond

[www.art-dept.com](http://www.art-dept.com)



# Art Department



## AGAINST TYPE

He may look like the stereotypical guy's guy, but **Garrett Hedlund's** life, on screen and off, is all in the subtleties

*Photography by*  
Kurt Markus  
*Styling by*  
Alison Edmond  
*Written by*  
Christine Lennon

HELMET: MICHEL; BELT: MICHAEL; SHOES: PRADA; HAT: BOSS  
MASON T-SHIRT: BOSS; TURTLENECK: HUGO BOSS; RINGS: THROUGHOUT; BOSS

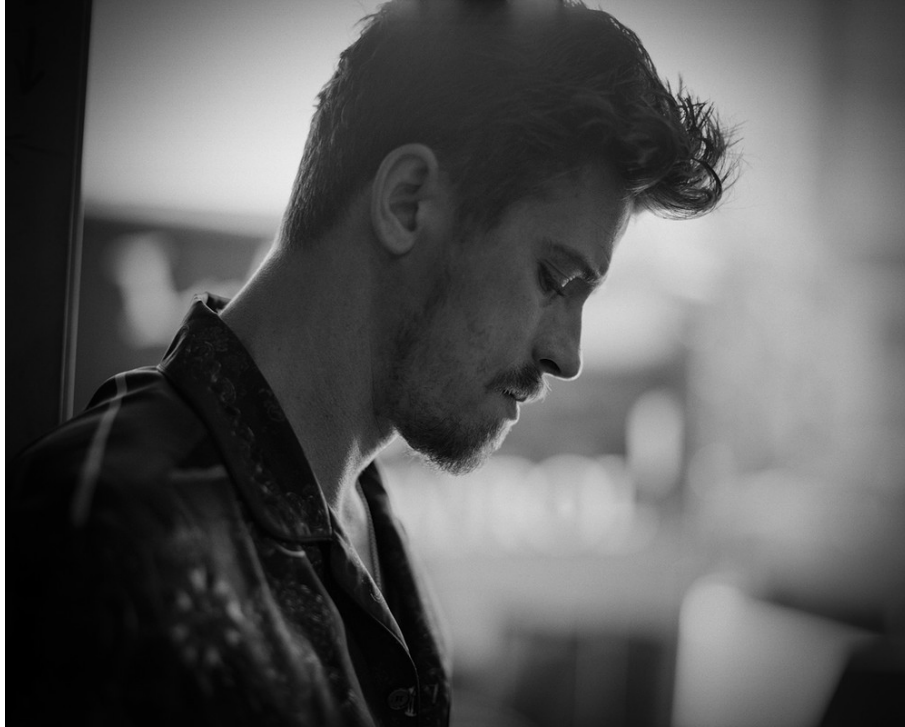


## Alison Edmond

[www.art-dept.com](http://www.art-dept.com)



# Art Department



Alison Edmond

[www.art-dept.com](http://www.art-dept.com)



# Art Department



Alison Edmond

[www.art-dept.com](http://www.art-dept.com)



# Art Department



Alison Edmond

[www.art-dept.com](http://www.art-dept.com)



# Art Department

## THE ORIGINALS

Six pioneers of the modeling industry prove they only get better with age

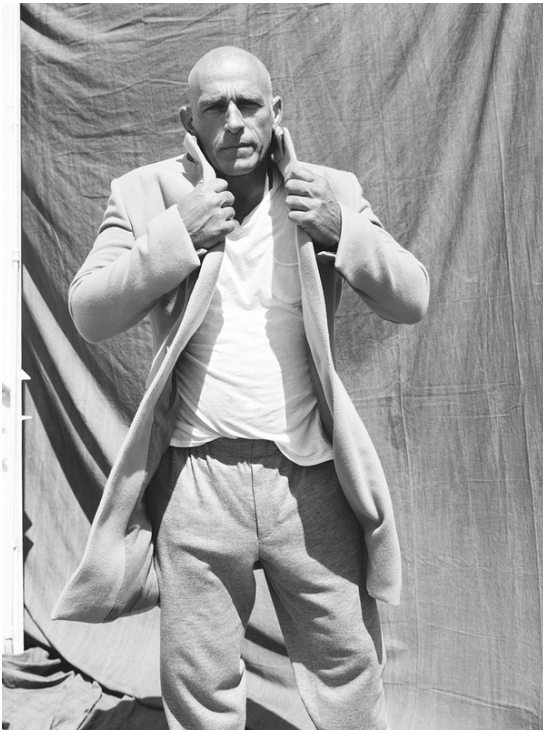
Photography by  
Beau Grealy

Styling by  
Alison Edmond

Written by  
Lindzi Scharf

◆ In a world where being a male model is seemingly now a rite of passage for any photogenic guy with a social media brand to build, it's easy to forget that back in the '60s and '70s, such a career path was viewed as taboo—and the exclusive domain of women. However, the six gentlemen on these pages, gathered together at The Hollywood Roosevelt hotel by John Peerson (widely regarded as “the world’s first male supermodel”), helped to break the mold and

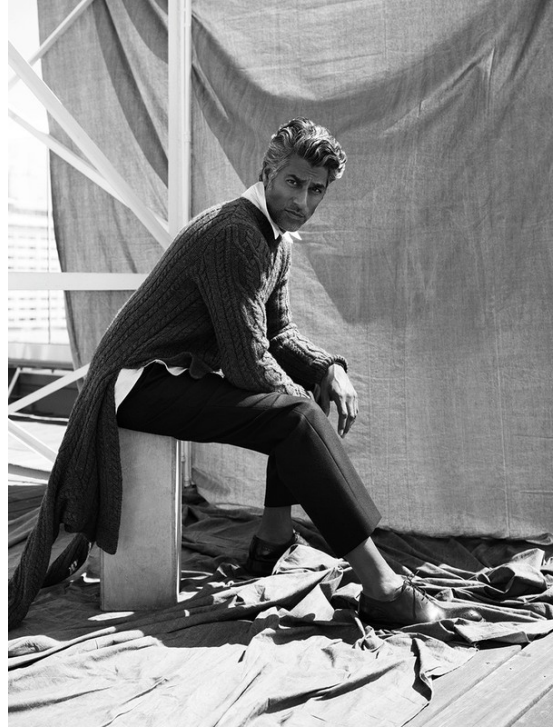
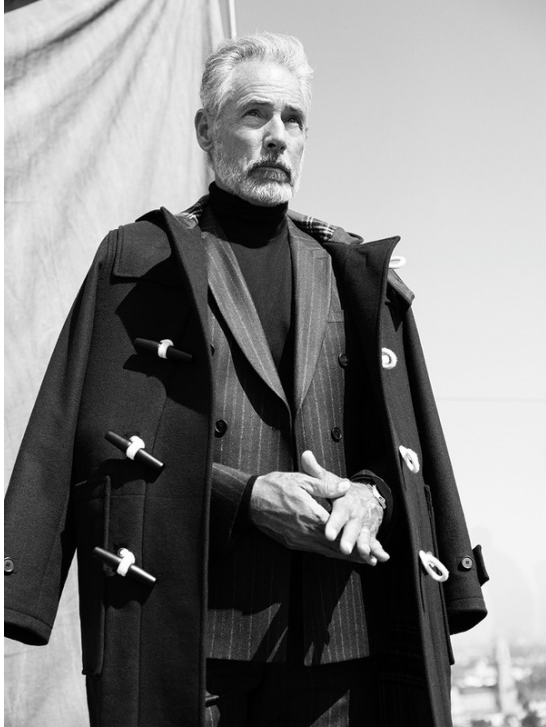
change the clichéd view of men in the industry. Proving they still have what it takes, the longtime friends and collaborators—Peerson, Olivier Debraey, Hoyt Richards, Moose Ali Khan, Bruce Hulse and Cameron Alborzian—offer today’s up-and-comers a lesson in wearing well. “We’ve got this fundamental history in a business that has changed rapidly,” Peerson says. Adds Khan: “The hair is a little grayer here, but the sparkle in everyone’s eyes, the humility and the charm is the same.”



## Alison Edmond

[www.art-dept.com](http://www.art-dept.com)

# Art Department



Alison Edmond

[www.art-dept.com](http://www.art-dept.com)



# Art Department



Alison Edmond

[www.art-dept.com](http://www.art-dept.com)

# Art Department



Alison Edmond

[www.art-dept.com](http://www.art-dept.com)







# Art Department



Alison Edmond

[www.art-dept.com](http://www.art-dept.com)



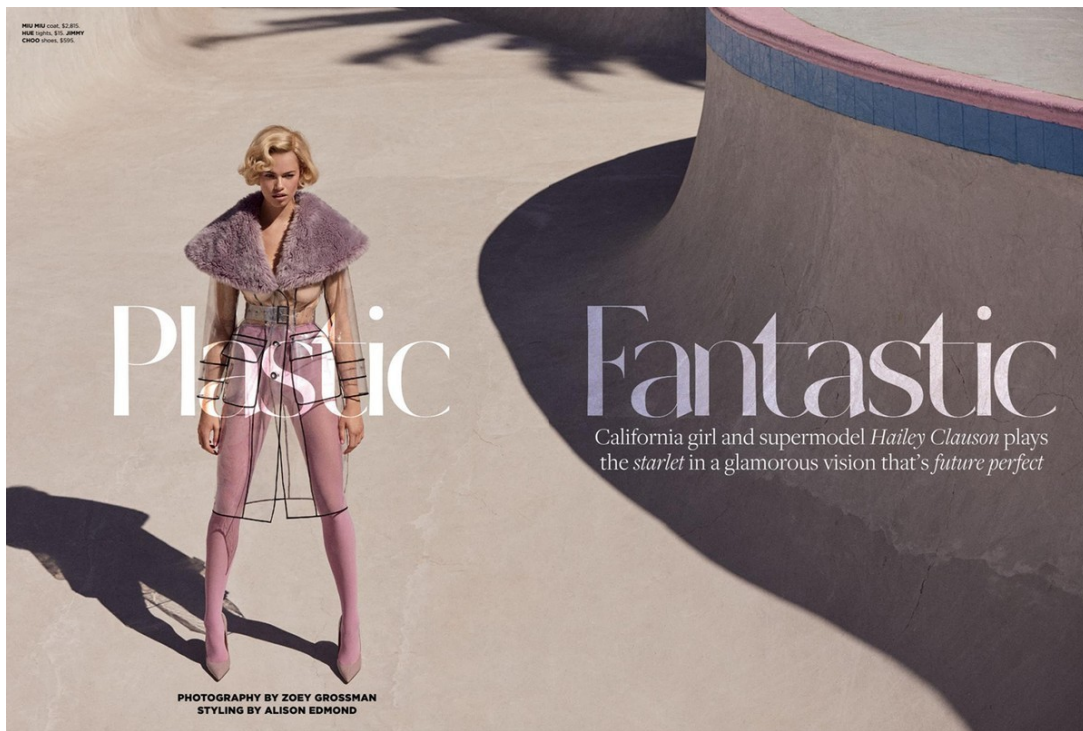
# Art Department



Alison Edmond

[www.art-dept.com](http://www.art-dept.com)

# Art Department



## Alison Edmond

[www.art-dept.com](http://www.art-dept.com)



# Art Department



Alison Edmond

[www.art-dept.com](http://www.art-dept.com)

# Art Department



Alison Edmond

[www.art-dept.com](http://www.art-dept.com)



# Art Department



Alison Edmond

[www.art-dept.com](http://www.art-dept.com)

# Art Department



Alison Edmond

[www.art-dept.com](http://www.art-dept.com)



# Art Department



Alison Edmond

[www.art-dept.com](http://www.art-dept.com)

# Art Department



Alison Edmond

[www.art-dept.com](http://www.art-dept.com)



# Art Department



Alison Edmond

[www.art-dept.com](http://www.art-dept.com)

# Art Department



## Bird of Paradise

Captured in SANTA BARBARA'S fantastical LOTUSLAND, otherworldly superhero ZOÉ SALDANA comes DOWN TO EARTH

Photography by KURT MARKUS  
Styling by ALISON EDMOND  
Written by CHRISTINE LENNON



VALENTINO (top): \$1,990  
STEFIE SOBRIEN (ring): \$1,400. Wedding band throughout: Saldana's own

## Alison Edmond

[www.art-dept.com](http://www.art-dept.com)



# Art Department



Alison Edmond

[www.art-dept.com](http://www.art-dept.com)



# Art Department



Alison Edmond

[www.art-dept.com](http://www.art-dept.com)



# Art Department



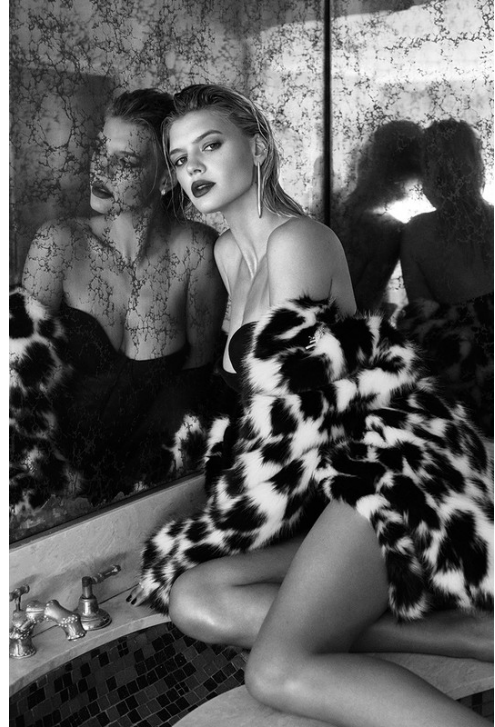
Alison Edmond

[www.art-dept.com](http://www.art-dept.com)





# Art Department



Alison Edmond

[www.art-dept.com](http://www.art-dept.com)



# Art Department



Alison Edmond

[www.art-dept.com](http://www.art-dept.com)



# Art Department

Actor **SOFIA BOUTELLA** shows her **SOFT SIDE** in this season's delicate **GEMS** and petal-hued **GOWNS**

## Romancing *the* Stone



Photography by **MONA KUHN** Styled by **ALISON EDMOND**



## Alison Edmond

[www.art-dept.com](http://www.art-dept.com)



# Art Department



Alison Edmond

[www.art-dept.com](http://www.art-dept.com)



# Art Department



Alison Edmond

# Art Department

## LEAPS & BOUNDS

Captured in Joshua Tree through the lens of his artist wife, Sam, actor **Aaron Taylor-Johnson** is pulling all the right moves, **ON** screen and off

*Photography by*  
Sam Taylor-Johnson  
*Styling by*  
Alison Edmond  
*Written by*  
Degen Pener

60



## Alison Edmond

[www.art-dept.com](http://www.art-dept.com)



# Art Department



Alison Edmond

[www.art-dept.com](http://www.art-dept.com)



# Art Department



Alison Edmond

[www.art-dept.com](http://www.art-dept.com)



# Art Department



Alison Edmond

[www.art-dept.com](http://www.art-dept.com)



# Art Department



**Bom  
this  
Way**

In an emotionally nuanced BREAKOUT performance, ZOEY DEUTCH lives up to her family's Hollywood LEGACY

Photography by BEAU GREELY  
Styled by ALISON EDMOND  
Written by CHRISTINE LENNON

CW APRIL 2017



## Alison Edmond

[www.art-dept.com](http://www.art-dept.com)



# Art Department



Alison Edmond

[www.art-dept.com](http://www.art-dept.com)

# Art Department



Alison Edmond

[www.art-dept.com](http://www.art-dept.com)



# Art Department



Alison Edmond

[www.art-dept.com](http://www.art-dept.com)





# Art Department



Alison Edmond

[www.art-dept.com](http://www.art-dept.com)

# Art Department



Alison Edmond

[www.art-dept.com](http://www.art-dept.com)



# Art Department



Alison Edmond

[www.art-dept.com](http://www.art-dept.com)

# Art Department



Alison Edmond

[www.art-dept.com](http://www.art-dept.com)



# Art Department



Alison Edmond

[www.art-dept.com](http://www.art-dept.com)

# Art Department



Alison Edmond

[www.art-dept.com](http://www.art-dept.com)



# Art Department

## Heat

LAIS RIBEIRO embodies the steamier side of fashion's LATIN INFLUENCES in this SEASON'S sexiest frills and flounces

## WAVE

Photography by KURT MARKUS  
Styling by ALISON EDMOND



MU MU LUTING (top, \$190,  
bottom, \$270, and skirt, \$2,200),  
KENNEDY CORNAD (top, \$170,  
bottom, \$170), and shoes, \$165.



## Alison Edmond

[www.art-dept.com](http://www.art-dept.com)

# Art Department



Alison Edmond

[www.art-dept.com](http://www.art-dept.com)



# Art Department



Alison Edmond

[www.art-dept.com](http://www.art-dept.com)

# Art Department



Alison Edmond

[www.art-dept.com](http://www.art-dept.com)



# Art Department



Really ROSIE



Alison Edmond

[www.art-dept.com](http://www.art-dept.com)

# Art Department



Alison Edmond

[www.art-dept.com](http://www.art-dept.com)



# Art Department



Alison Edmond

[www.art-dept.com](http://www.art-dept.com)



# Art Department



Alison Edmond

[www.art-dept.com](http://www.art-dept.com)





# Art Department



Alison Edmond

[www.art-dept.com](http://www.art-dept.com)



# Art Department



Alison Edmond

[www.art-dept.com](http://www.art-dept.com)



# Art Department

## Pacific TIME

Photography by KURT ISWARIENKO  
Styling by ALISON EDMOND

LEGENDARY  
model ELAINE  
IRWIN takes  
the road  
less traveled  
in SPRING'S  
NEW collections—  
showcasing the  
best to come  
in MINIMAL and  
MONOCHROME  
FASHION



RALPH LAUREN COLLECTION  
JACKET: \$2,495; HAT: \$125; BELT: \$1,495; SKIRT: \$1,495; SHOES: \$1,495  
STYLING: ALISON EDMOND; MAKEUP: AMERICAN APPAREL; HAIR: SUE ALL SAINTS



## Alison Edmond

[www.art-dept.com](http://www.art-dept.com)



# Art Department



Alison Edmond

[www.art-dept.com](http://www.art-dept.com)

# Art Department



Alison Edmond

[www.art-dept.com](http://www.art-dept.com)



# Art Department



Alison Edmond

[www.art-dept.com](http://www.art-dept.com)

# Art Department



Alison Edmond

[www.art-dept.com](http://www.art-dept.com)



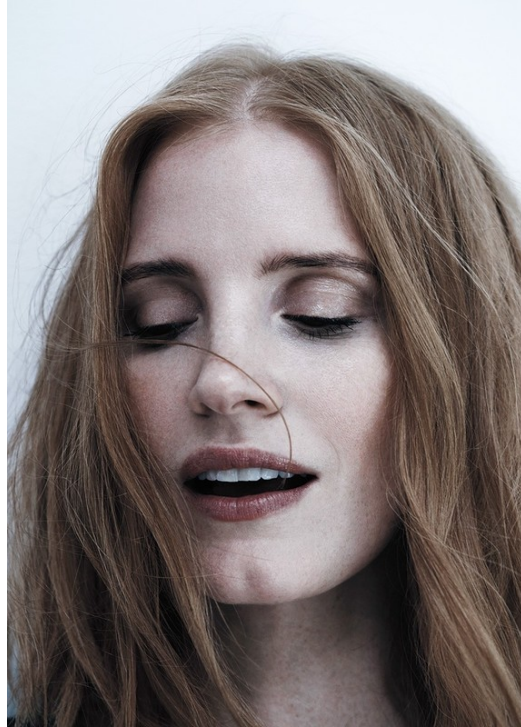
# Art Department



Alison Edmond

[www.art-dept.com](http://www.art-dept.com)

# Art Department



## Glam

As EARLY-'80S PUNK INFLUENCES re-emerge on the FASHION scene, JEWELERS rise to the occasion with BOLD DESIGNS to match

## Rocks

Photography by CHRISTIAN ANWANDER  
Styling by ALISON EDMOND



C 194 NOVEMBER 2005

## Alison Edmond

[www.art-dept.com](http://www.art-dept.com)



# Art Department

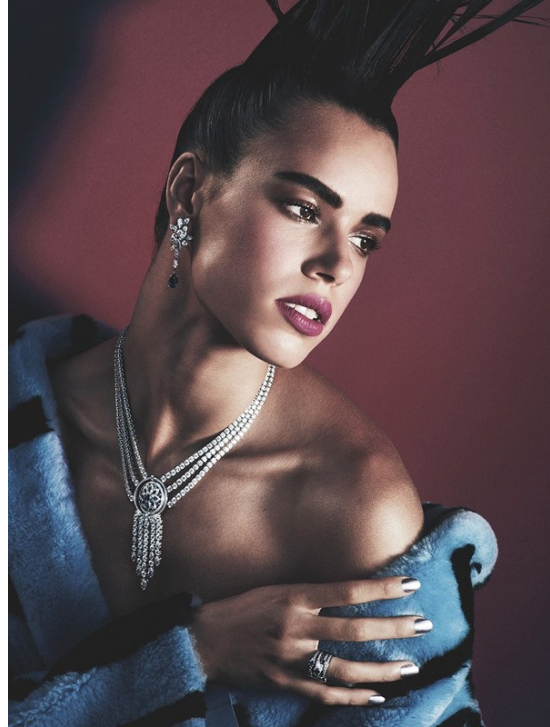


Alison Edmond

[www.art-dept.com](http://www.art-dept.com)



# Art Department



Alison Edmond

[www.art-dept.com](http://www.art-dept.com)



# Art Department



Alison Edmond

[www.art-dept.com](http://www.art-dept.com)

# Art Department



Alison Edmond

[www.art-dept.com](http://www.art-dept.com)



# Art Department



Alison Edmond

[www.art-dept.com](http://www.art-dept.com)



# Art Department



Alison Edmond

[www.art-dept.com](http://www.art-dept.com)



# Art Department



Alison Edmond

[www.art-dept.com](http://www.art-dept.com)