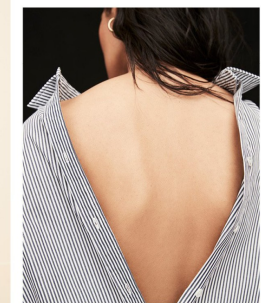
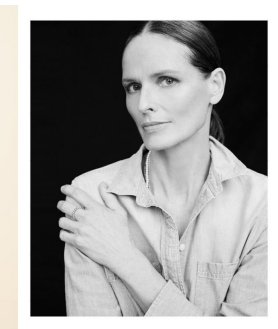
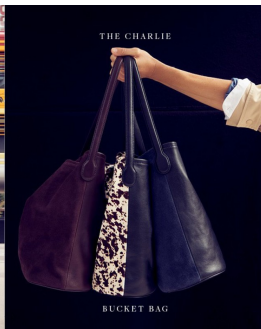


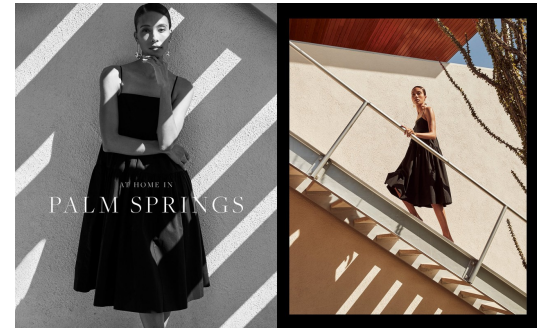
Art Department



Mark DeMott

www.art-dept.com

Art Department



Mark DeMott

www.art-dept.com

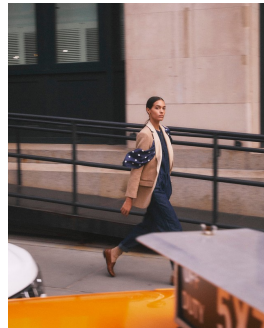
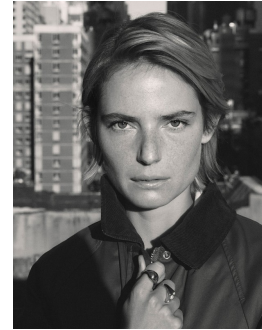
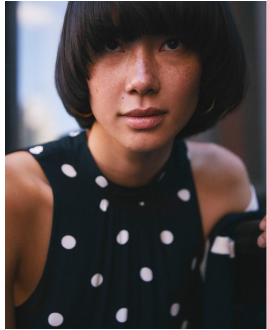
Art Department



Mark DeMott

www.art-dept.com

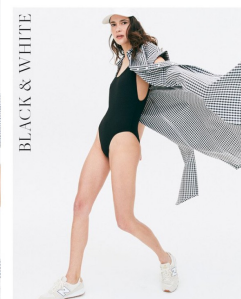
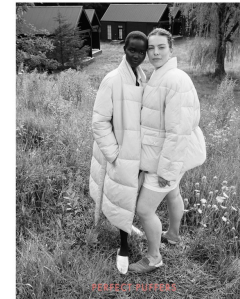
Art Department



Mark DeMott

www.art-dept.com

Art Department



Mark DeMott

www.art-dept.com

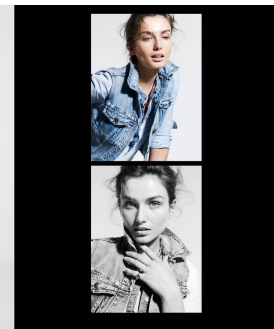
Art Department



Gwenyth picks some of her fall favorites from J.Crew and shows us how she wears them.



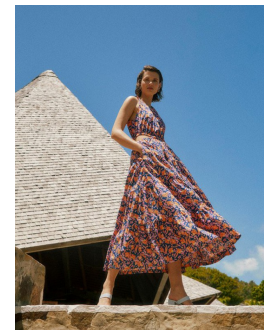
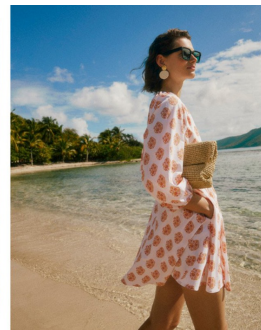
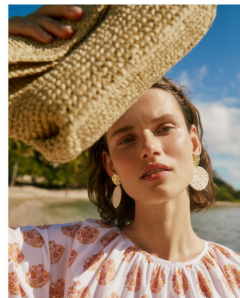
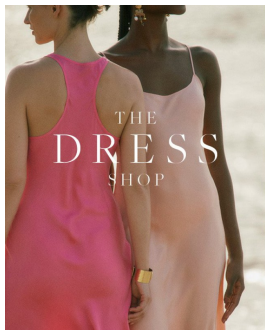
YOU PROBABLY DON'T KNOW ABOUT SHUTTLE LOOMS, THREAD COUNT AND SPANDEX-TO-COTTON RATIOS, BUT YOU DO KNOW WHEN YOUR BUTT LOOKS GREAT IN A PAIR OF JEANS. DON'T WORRY, WE KNOW ABOUT ALL THE OTHER STUFF, SO YOU DON'T HAVE TO. J.CREW DENIM. ALL YOU NEED TO KNOW.



Mark DeMott

www.art-dept.com

Art Department



Mark DeMott

www.art-dept.com

Art Department



Mark DeMott

www.art-dept.com