

# Art Department



Mark DeMott

[www.art-dept.com](http://www.art-dept.com)

# Art Department



Mark DeMott

[www.art-dept.com](http://www.art-dept.com)



# Art Department



Mark DeMott

[www.art-dept.com](http://www.art-dept.com)

# Art Department



Mark DeMott

[www.art-dept.com](http://www.art-dept.com)



# Art Department



Mark DeMott

[www.art-dept.com](http://www.art-dept.com)

# Art Department



Mark DeMott

[www.art-dept.com](http://www.art-dept.com)



# Art Department



Mark DeMott

[www.art-dept.com](http://www.art-dept.com)



# Art Department



Mark DeMott

[www.art-dept.com](http://www.art-dept.com)



# Art Department



Mark DeMott

[www.art-dept.com](http://www.art-dept.com)



# Art Department



Mark DeMott

[www.art-dept.com](http://www.art-dept.com)



# Art Department



Mark DeMott

[www.art-dept.com](http://www.art-dept.com)



# Art Department



Mark DeMott

[www.art-dept.com](http://www.art-dept.com)



# Art Department



Mark DeMott

[www.art-dept.com](http://www.art-dept.com)



# Art Department



Mark DeMott

[www.art-dept.com](http://www.art-dept.com)



# Art Department

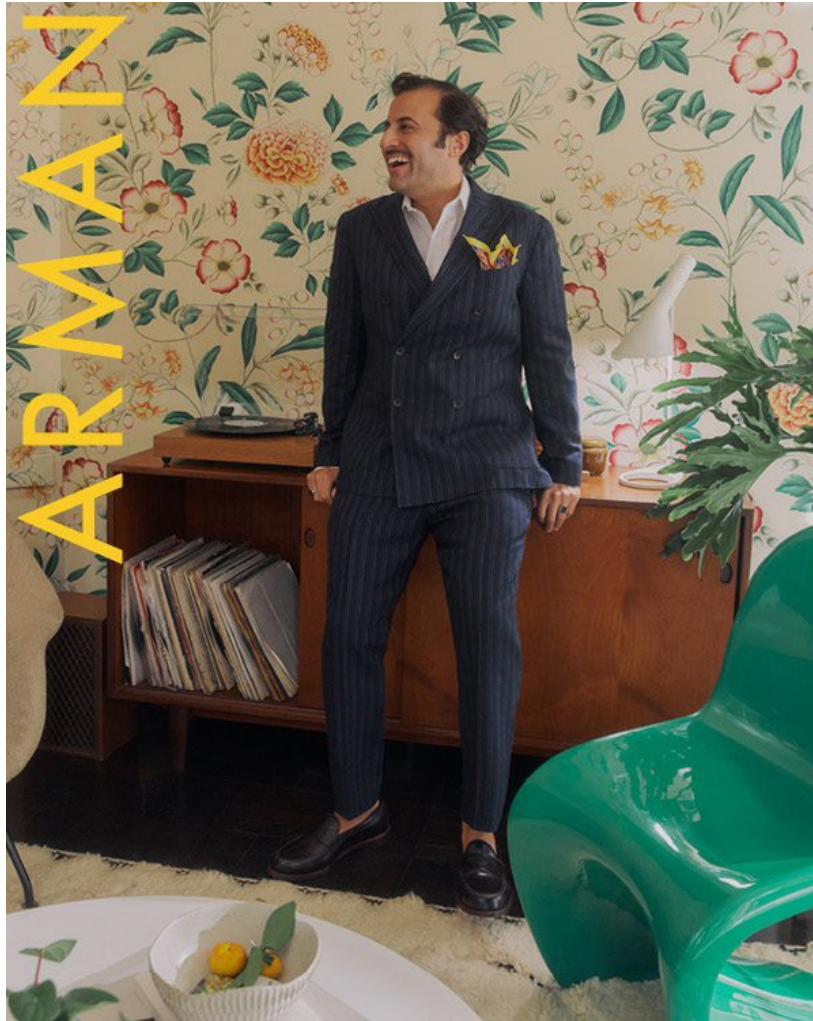


Mark DeMott

[www.art-dept.com](http://www.art-dept.com)



# Art Department

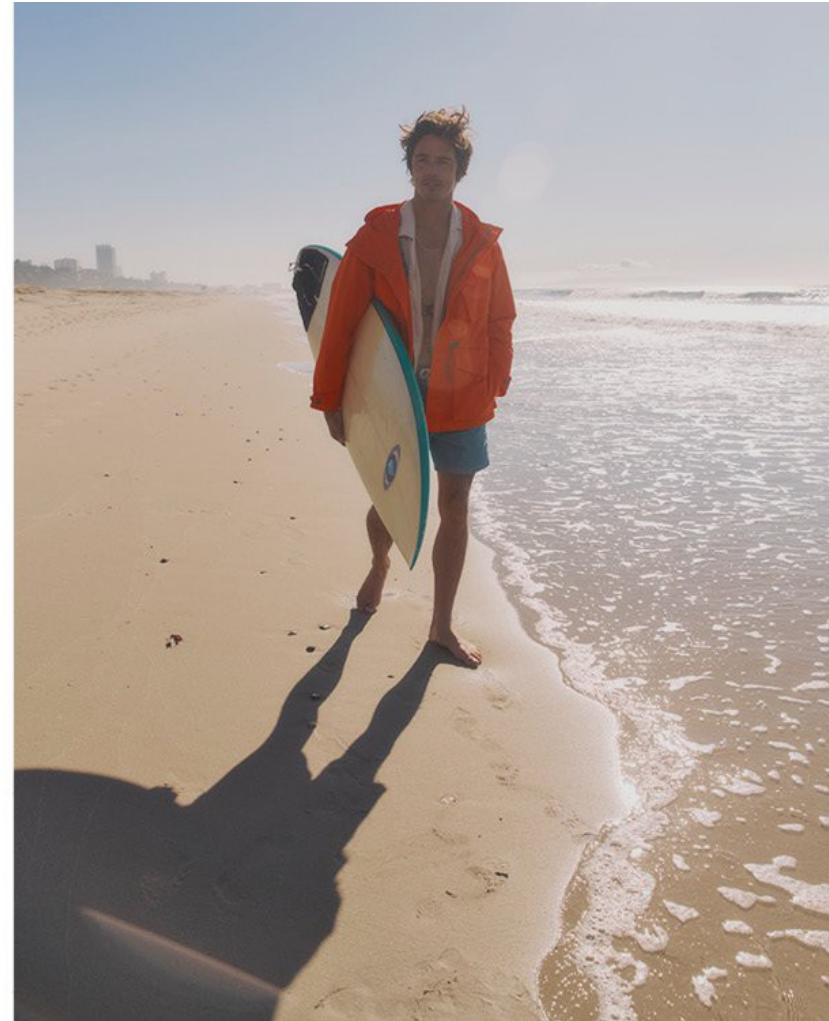


Mark DeMott

[www.art-dept.com](http://www.art-dept.com)



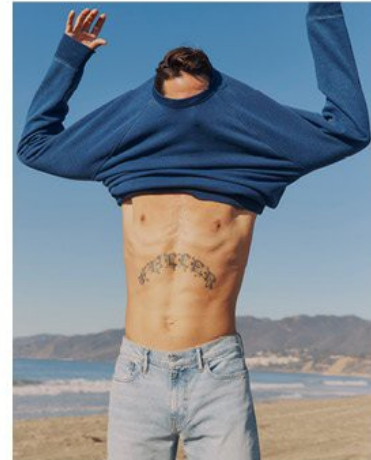
# Art Department



Mark DeMott

[www.art-dept.com](http://www.art-dept.com)

# Art Department



Mark DeMott

[www.art-dept.com](http://www.art-dept.com)



# Art Department



Mark DeMott

[www.art-dept.com](http://www.art-dept.com)



# Art Department



Mark DeMott

[www.art-dept.com](http://www.art-dept.com)



# Art Department



Mark DeMott

[www.art-dept.com](http://www.art-dept.com)



# Art Department

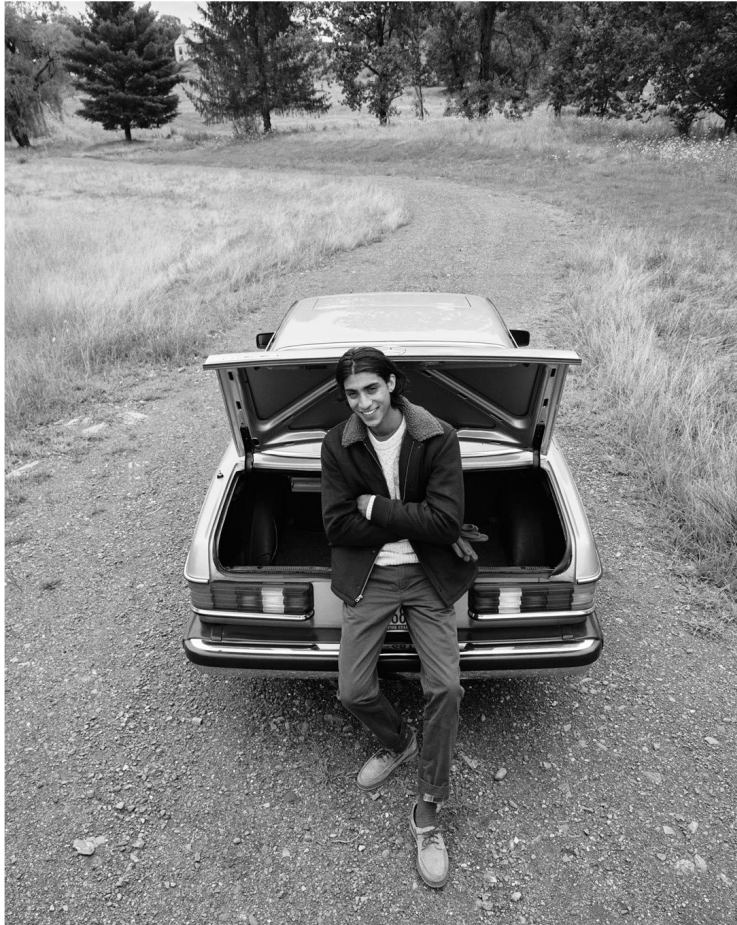


Mark DeMott

[www.art-dept.com](http://www.art-dept.com)



# Art Department



Mark DeMott

[www.art-dept.com](http://www.art-dept.com)



# Art Department



Mark DeMott

[www.art-dept.com](http://www.art-dept.com)



# Art Department



Mark DeMott

[www.art-dept.com](http://www.art-dept.com)

# Art Department



Mark DeMott

[www.art-dept.com](http://www.art-dept.com)



# Art Department



Mark DeMott

[www.art-dept.com](http://www.art-dept.com)

# Art Department



GARMENT  
DYED HAT

Mark DeMott

[www.art-dept.com](http://www.art-dept.com)



# Art Department



Mark DeMott

[www.art-dept.com](http://www.art-dept.com)

# Art Department

NOUS VOUS PRÉSENTONS LA NOUVELLE COLLECTION

*J.Crew*  
**DENIM**  
CRÉÉE À NEW YORK

Quand nous avons entrepris de redessiner notre collection de denims, nous avons en tête de saisir tout ce que les membres de notre équipe aiment dans leurs jeans préférés. Pour nous, cela voulait dire : aller chercher une matière incroyable chez le fabricant japonais Kaihara, développer des teintures à la main dans le Kentucky et perfectionner chacune de nos coupes.

ESSAYEZ-LES DANS NOS BOUTIQUES  
OU VENEZ SUR [JCREW.COM/DENIM](http://JCREW.COM/DENIM).

14



Rich Hermosura  
CRÉATEUR JEANS

MODÈLE : **1040**  
Pour celui qui préfère une coupe plus classique. Il tombe droit sur la hanche et les cuisses avec une jambe légèrement fuselée.  
TEINTE : Fairfax  
STYLE : C9066

## Mark DeMott

[www.art-dept.com](http://www.art-dept.com)



# Art Department



Mark DeMott

[www.art-dept.com](http://www.art-dept.com)



# Art Department



Ben Ross  
CRÉATEUR JEANS

MODÈLE : **770**

Coupe droite sur les hanches, mais slim sur les cuisses et les jambes. Le parfait compromis entre coupe slim et coupe droite.

TEINTE : Leroy

STYLE : C9051

Jenke-Ahmed Tailly  
STYLISTE

MODÈLE : **484**

Notre coupe la plus ajustée, avec ses jambes étroites, se porte sous la taille. Pour ceux qui aiment une coupe ajustée, mais pas moulante.

TEINTE : Gorham

STYLE : C9074

## Mark DeMott

[www.art-dept.com](http://www.art-dept.com)



# Art Department



Mark DeMott

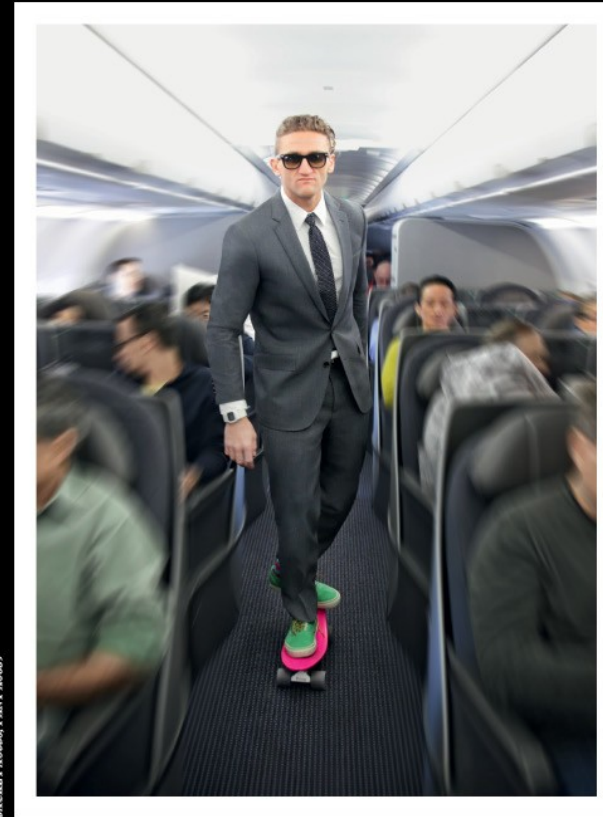
[www.art-dept.com](http://www.art-dept.com)

# Art Department

**TRAVEL WITH STYLE**  
*(A MOVIE BY CASEY NEISTAT)*

FEATURING

THE LUDLOW TRAVELER  
*(A NEW SUIT BY J.CREW)*



JACKET A0856, PANTS A0857

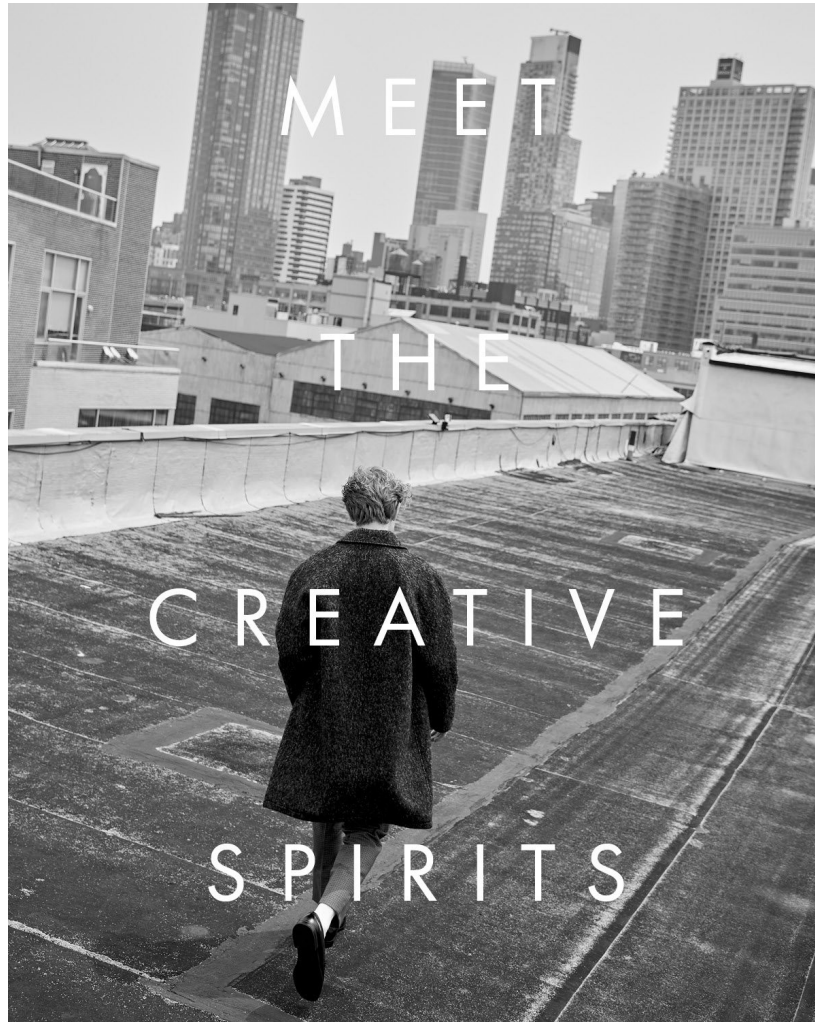
NOW PLAYING AT [JCREW.COM/JCREWONFILM](http://JCREW.COM/JCREWONFILM)

## Mark DeMott

[www.art-dept.com](http://www.art-dept.com)



# Art Department



Mark DeMott

[www.art-dept.com](http://www.art-dept.com)

# Art Department



Mark DeMott

[www.art-dept.com](http://www.art-dept.com)



# Art Department



Mark DeMott

[www.art-dept.com](http://www.art-dept.com)

# Art Department



Mark DeMott

[www.art-dept.com](http://www.art-dept.com)



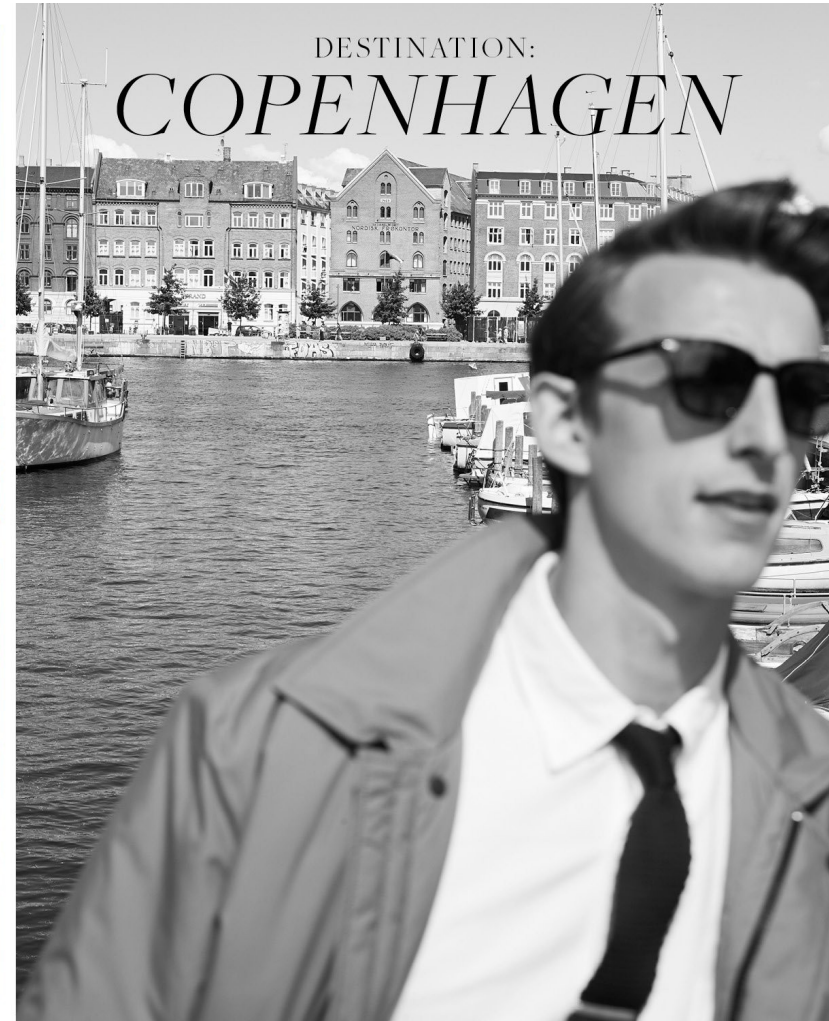
# Art Department



Mark DeMott

[www.art-dept.com](http://www.art-dept.com)

# Art Department



Mark DeMott

[www.art-dept.com](http://www.art-dept.com)



# Art Department



Mark DeMott

[www.art-dept.com](http://www.art-dept.com)



# Art Department



Mark DeMott

[www.art-dept.com](http://www.art-dept.com)



# Art Department



Mark DeMott

[www.art-dept.com](http://www.art-dept.com)

# Art Department



Mark DeMott

[www.art-dept.com](http://www.art-dept.com)



# Art Department



Mark DeMott

[www.art-dept.com](http://www.art-dept.com)



# Art Department



Mark DeMott

[www.art-dept.com](http://www.art-dept.com)



# Art Department



Mark DeMott

[www.art-dept.com](http://www.art-dept.com)

# Art Department



Mark DeMott

[www.art-dept.com](http://www.art-dept.com)



# Art Department



Mark DeMott

[www.art-dept.com](http://www.art-dept.com)



# Art Department



Mark DeMott

[www.art-dept.com](http://www.art-dept.com)



# Art Department



Mark DeMott

[www.art-dept.com](http://www.art-dept.com)

# Art Department



Mark DeMott

[www.art-dept.com](http://www.art-dept.com)



# Art Department



Mark DeMott

[www.art-dept.com](http://www.art-dept.com)