

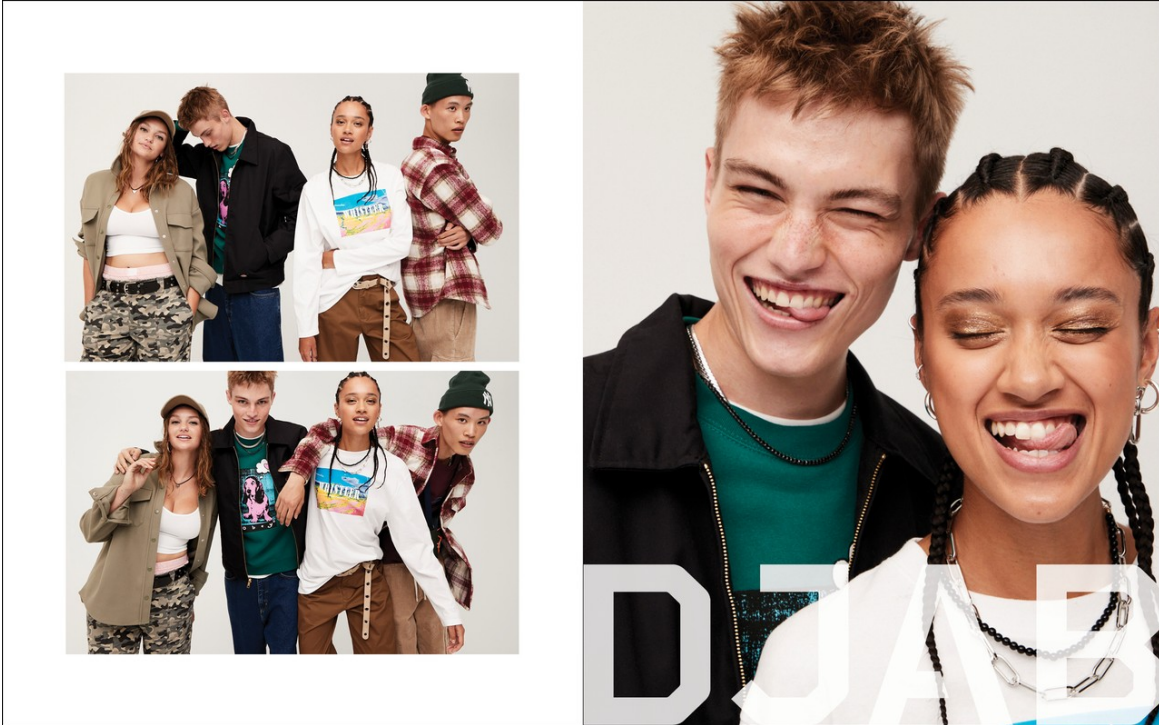
# Art Department



Mark DeMott

[www.art-dept.com](http://www.art-dept.com)

# Art Department



Mark DeMott

[www.art-dept.com](http://www.art-dept.com)



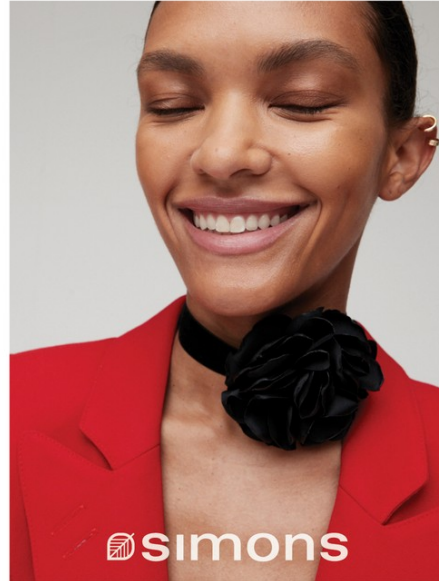
# Art Department



Mark DeMott

[www.art-dept.com](http://www.art-dept.com)

# Art Department



Mark DeMott

[www.art-dept.com](http://www.art-dept.com)



# Art Department



Mark DeMott

[www.art-dept.com](http://www.art-dept.com)



# Art Department



Mark DeMott

[www.art-dept.com](http://www.art-dept.com)



# Art Department



Mark DeMott

[www.art-dept.com](http://www.art-dept.com)

# Art Department



Mark DeMott

[www.art-dept.com](http://www.art-dept.com)



# Art Department



Mark DeMott

[www.art-dept.com](http://www.art-dept.com)

# Art Department



Mark DeMott



# Art Department



Mark DeMott

[www.art-dept.com](http://www.art-dept.com)

# Art Department



Mark DeMott

[www.art-dept.com](http://www.art-dept.com)

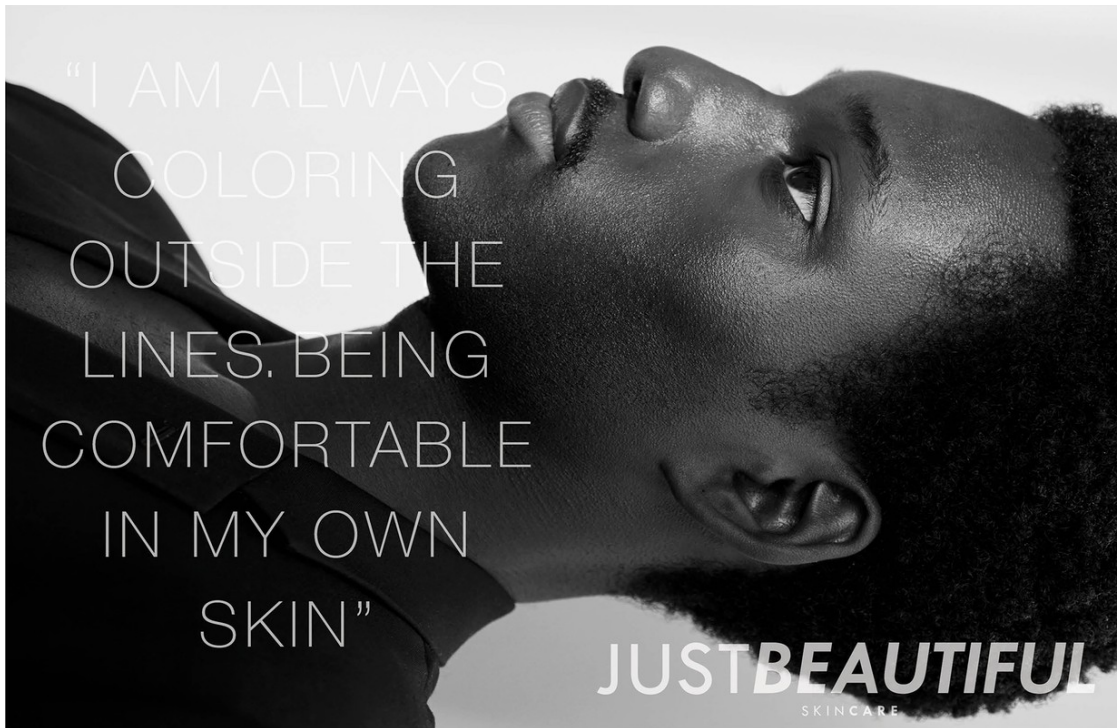


# Art Department



Mark DeMott

# Art Department



Mark DeMott

[www.art-dept.com](http://www.art-dept.com)



# Art Department



Mark DeMott

[www.art-dept.com](http://www.art-dept.com)

# Art Department

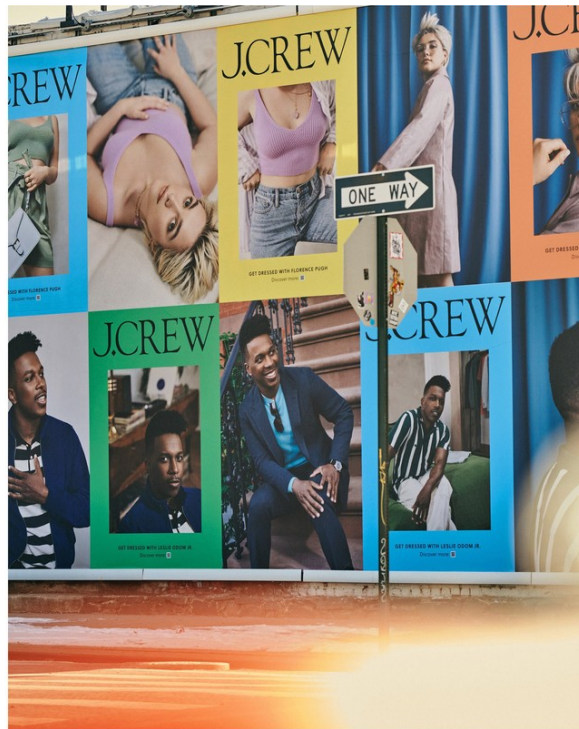


Mark DeMott

[www.art-dept.com](http://www.art-dept.com)



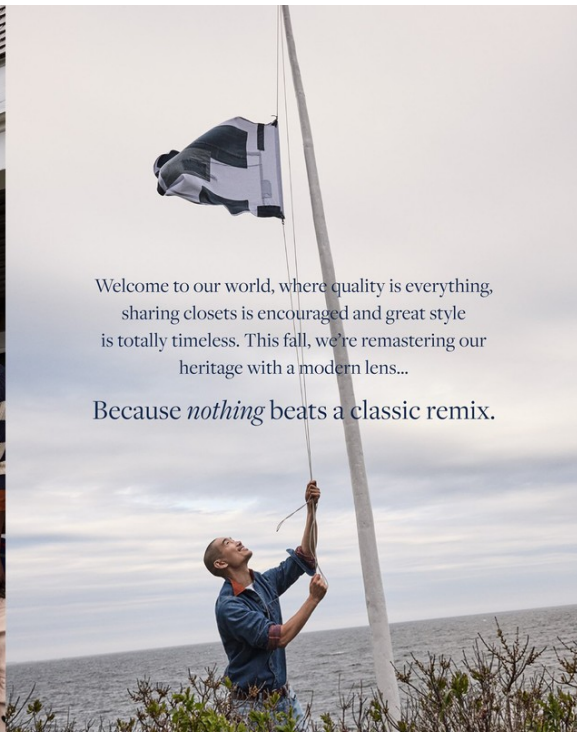
# Art Department



Mark DeMott

[www.art-dept.com](http://www.art-dept.com)

# Art Department



Mark DeMott

[www.art-dept.com](http://www.art-dept.com)



# Art Department



**This page:** Cropped Barn Jacket **B0985** \$198 Import. Shirt **B1323** \$79.50 Import. Pant **B1888** \$98 Import. Men's hat **BK128** \$49.50 Import. Loafers **BK483** \$198 Import. **Opposite page, top row, left:** Suit jacket **B1000** \$198 Import. Suit pants **B1002** \$148 Import. Purple sweater **B1094** \$148 Import. Men's blue-honey striped sweater **B1164** \$98 Import. Sunglasses **B1738** \$69.50 Import. Men's bandana **A1473** \$19.50 Import. **Top row, right:** Jacket **B1001** \$118 Import. Pink dress **B1048** \$148 Import. Loafers **BK482** \$198 Import. **Bottom row, left:** Pink Fair Isle sweater **B1056** \$148 Import. Pink shirt **B1328** \$79.50 Import. Men's belt **A2266** \$49.50 Import. **Bottom row, right:** Plaid Barn Jacket **B1063** \$498 Import. Hoodie **B1353** \$128 Import. Jean **B1499** \$128 Import. Boots **BK821** \$198 Import.



**Left to right:** Tweed jacket **B1987** \$178 Import. Green rugby T-shirt **BK427** \$69.50 Import. Slouchy boyfriend chino **B1488** \$98 Import. Vertical-stripe raglan **B1207** \$98 Import. Giant-fit chino **BK121** \$89.50 Import. Navy striped T-shirt **B1334** \$65 Import. Blue Classic Related chino **BK61** \$89.50 Import. Men's blazer **BK128** \$198 Import. Men's Giant-fit chino **BK121** \$89.50 Import. Men's hat **BK130** \$49.50 Import. Green work shirt **BK273** \$89.50 Import. Classic Related pleated chino **BK612** \$89.50 Import.

# Mark DeMott

www.art-dept.com



# Art Department



**This page:** Suit jacket: BK391 \$798 Import. Suit pants: BK192 \$398 Import. Fair Isle sweater: BM310 \$168 Import.  
**Opposite page, top row, center:** Women's plaid blazer: BK435 \$348 Import. Women's plaid pants: BK209 \$248 Import.  
**Men's hat:** BK196 \$66 Import. **Top row, right:** Boots: BK036 \$248 Import. **Middle row, left:** Suit jacket: BK1200 \$598 Import.  
**Suit pants:** BK1202 \$348 Import. Purple sweater: BK194 \$148 Import. **Bottom row, left:** Men's loafers: AV166 \$148 Import.  
**Bottom row, center:** Men's blazer: BK1218 \$498 Import. Men's rugby: BK120 598 Import. Men's hat: BK230 \$54.50 Import.



Fresh takes on crisp pleats,  
sweater-vests, rugby-cashmere...



**Opposite page:** Cardigan: BK606 \$168 Import. Green cashmere sweater-vest: BK175 \$118 Import.  
 Shirt: BK132 \$79.50 Import. Skirt: BM427 \$128 Import. **This page, left:** White shirt: BM924 \$98 Import.  
 Grey cashmere sweater-vest: BK175 \$118 Import. Jean: BK128 \$138 Import. Sunglasses: BK178 \$69.50  
 Import. Mary Janes: BK477 \$148 Import. **Center:** Cardigan: BK606 \$168 Import. Rugby cashmere  
 sweater: BK174 \$128 Import. Jean: BK794 \$148 Import. Loafers: BK482 \$198 Import. **Right:** Tweed  
 jacket: BK197 \$278 Import. Cashmere sweater: BK656 \$138 Import. Pants: BK191 \$168 Import.

## Mark DeMott

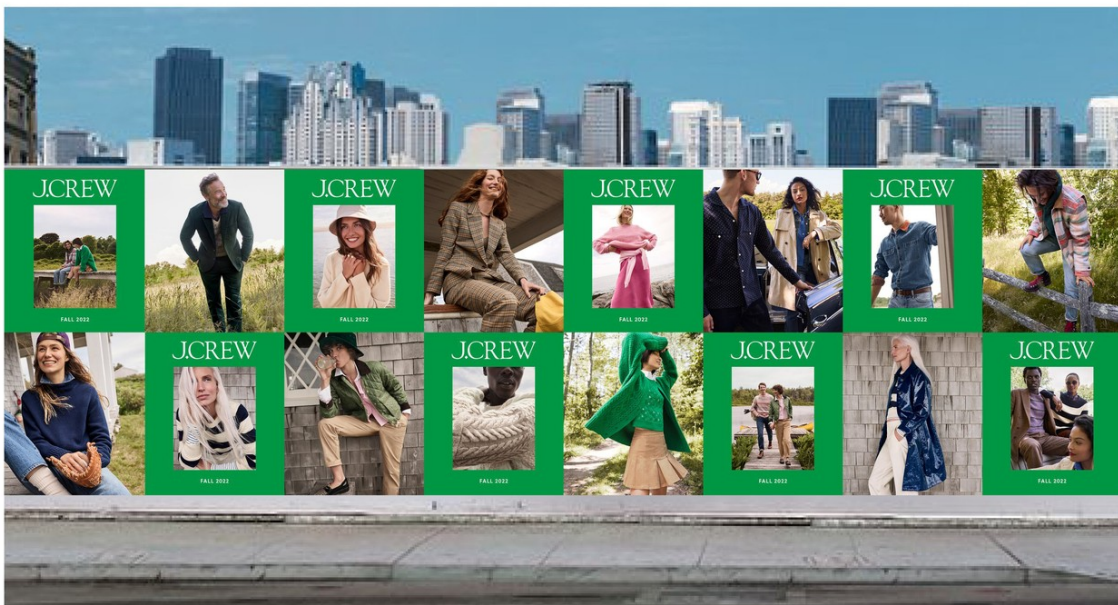
www.art-dept.com



# Art Department



**This page:** Trench: BK749 5398 Import. Rugby cashmere sweater: BL374 5128 Import. Striped T-shirt: BL111 542.50 Import. Pant: BH828 598 Import. **Opposite page, top row, right:** Rugby sweater: BH511 599.50 Import. Men's jeans: BE424 5128 Import. Men's hat: B1716 565 Import. Men's green belt: AZ886 549.50 Import. Men's loafers: AY166 5148 Import. **Bottom row, left:** Denim jacket: AN270 5118 Import. Shirt: BL152 579.50 Import. Jean: BK649 5118 Import. Loafers: BK482 5118 Import. **Bottom row, right:** Denim shirt: B1731 5118 Import. Jean: BK499 5128 Import. Belt: B1315 549.50 Import.

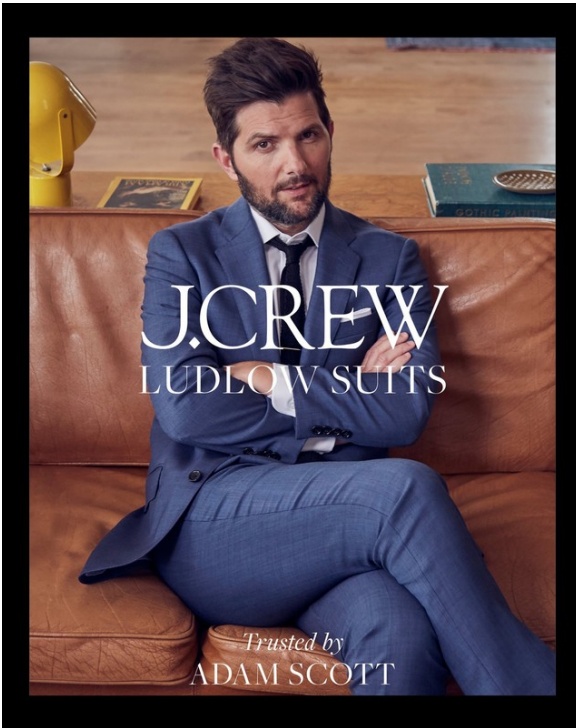


Mark DeMott

www.art-dept.com



# Art Department



Mark DeMott



# Art Department



Mark DeMott

[www.art-dept.com](http://www.art-dept.com)



# Art Department



Mark DeMott

[www.art-dept.com](http://www.art-dept.com)



# Art Department



Mark DeMott

[www.art-dept.com](http://www.art-dept.com)

# Art Department



*J.Crew*



*J.Crew*



## Mark DeMott

[www.art-dept.com](http://www.art-dept.com)



# Art Department



Mark DeMott

[www.art-dept.com](http://www.art-dept.com)

# Art Department



Mark DeMott

[www.art-dept.com](http://www.art-dept.com)



# Art Department



J.CREW



J.CREW

Mark DeMott

# Art Department

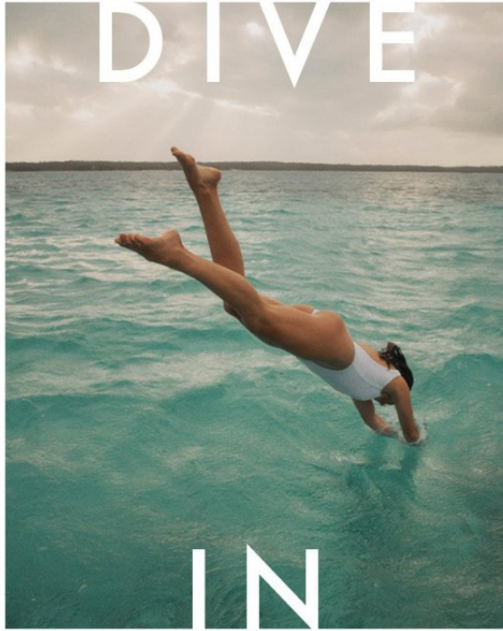


Mark DeMott

[www.art-dept.com](http://www.art-dept.com)



# Art Department



Mark DeMott

[www.art-dept.com](http://www.art-dept.com)



# Art Department



Mark DeMott

[www.art-dept.com](http://www.art-dept.com)



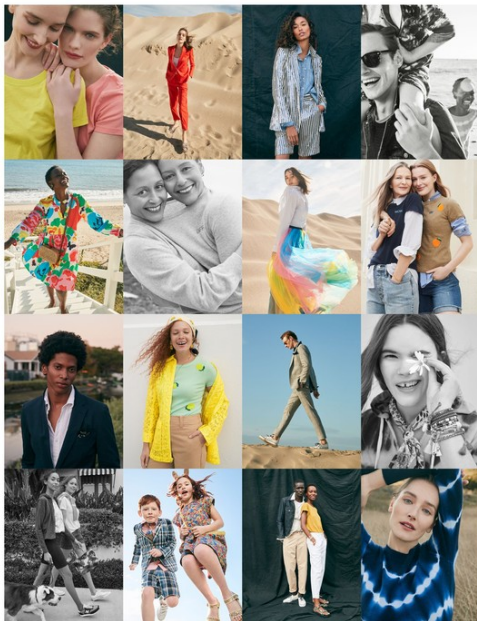
# Art Department



Mark DeMott

[www.art-dept.com](http://www.art-dept.com)

# Art Department



SHOP OUR NEW SPRING COLLECTION IN STORES AND AT JCREW.COM  
ON THE COVER: T-SHIRT K4224-514-50 Import, SKIRT AC467-576 Import.

over the years, we've become known for certain things that are just so j.crew—clever color, prints with personality, thoughtful classics and white denim, year-round. we take our cashmere monogrammed, believe in the power of a great-fitting pant and obsess over every lining and lapel, because we know the smallest details make the biggest difference. we'll always be true to these things, and we can't wait to show you what's next.

so j.crew

## Mark DeMott

www.art-dept.com



# Art Department



the classic  
white shirt  
so j.crew

BOY SHIRT 17812 \$49.50 Import. RAINBOW SKIRT A662 \$248 Import.



4 JCREW.COM



that chino life  
so j.crew

18

SHOP OUR FOUR CHINO FITS IN STORES AND AT JCREW.COM



FEATURING OUR NEW 250 SKINNY AND OUR CLASSIC 770 STRAIGHT

THIS PAGE, LEFT 250 SKINNY-FIT CHINO PANT A883 \$79.50 Import. SHIRT/JACKET A1879 \$98 Import.  
RIGHT AND OPPOSITE PAGE 770 STRAIGHT-FIT CHINO PANT E1590 \$79.50 Import. JACKET A8227 \$148 Import.

## Mark DeMott

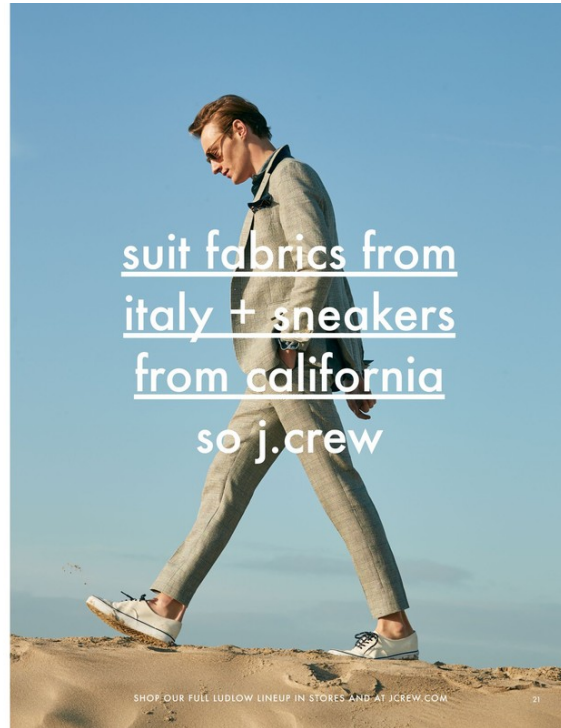
www.art-dept.com

# Art Department



VANS® X J.CREW SNEAKERS IN EXCLUSIVE NEW COLORS

THIS PAGE: VANS X J.CREW AUTHENTIC SNEAKERS IN DARK NAVY, GREY AND LIGHT BLUE 17524 \$60 Import; VANS X J.CREW ERA SNEAKERS IN MIXED BLUES A168 \$60 Import; VANS X J.CREW AUTHENTIC SNEAKERS IN WHITE 70806 \$60 Import; VANS X J.CREW AUTHENTIC SNEAKERS IN ORANGE AND RED A167 \$60 Import; OPPOSITE PAGE: LUDLOW SUIT JACKET IN ITALIAN LINEN-WOOL AG133 \$348 Import; LUDLOW SUIT PANTS IN ITALIAN LINEN-WOOL AG134 \$198 Import.



suit fabrics from  
italy + sneakers  
from california  
so j.crew

SHOP OUR FULL LUDLOW LINEUP IN STORES AND AT JCREW.COM



prints with  
personality  
so j.crew

DUE TO POPULAR DEMAND, THE TIEED CO-OPER DRESS, NOW IN A BOLD FLOREAL FROM J.CREW'S 1940S PRINT HOUSE, EST. 1945. (STYLING: KATHY HILL (LACE) \$198 Import; (SNEAKERS) \$128 Import)

## Mark DeMott

www.art-dept.com



# Art Department

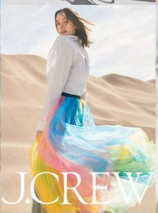
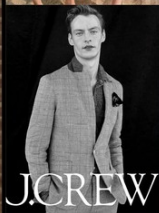
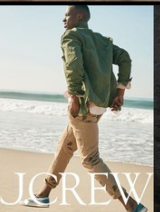
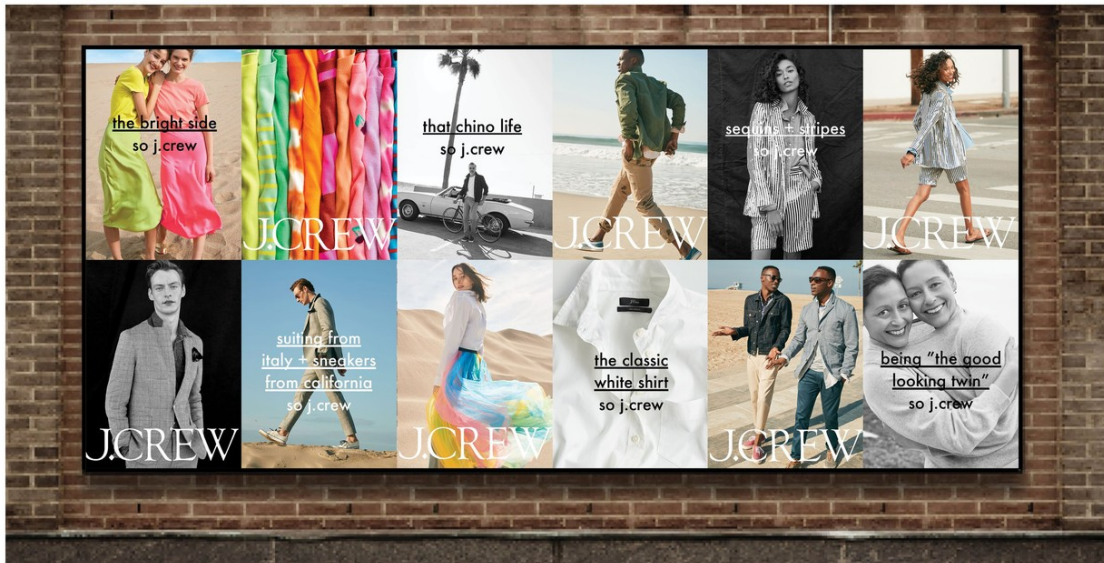


DENIM JACKET 00397 \$78 (import), STRIPED HENLEY A1623 \$59.50 (import), DENIM SHORT 16072 \$79.50 (import),  
SHORT-SLEEVE T-SHIRT Q1463 \$34.50 (import), DENIM BOOT JEAN J1752 \$122 (import).



flattering from  
every angle  
so j.crew

SHOT OUR YEAR-ROUND WHITE DENIM COLLECTION IN STORES AND AT JCREW.COM



## Mark DeMott

www.art-dept.com

# Art Department



Mark DeMott

[www.art-dept.com](http://www.art-dept.com)



# Art Department



Mark DeMott

[www.art-dept.com](http://www.art-dept.com)

# Art Department



Mark DeMott

[www.art-dept.com](http://www.art-dept.com)



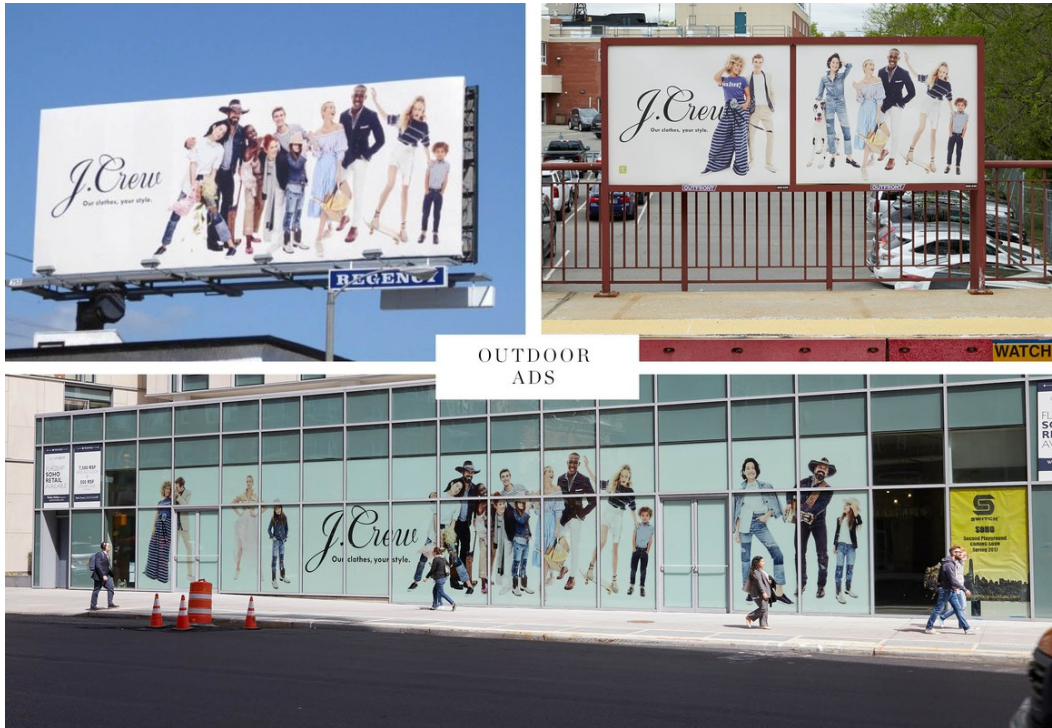
# Art Department



Mark DeMott

[www.art-dept.com](http://www.art-dept.com)

# Art Department



Mark DeMott

[www.art-dept.com](http://www.art-dept.com)



# Art Department



Mark DeMott

[www.art-dept.com](http://www.art-dept.com)

# Art Department



Mark DeMott

[www.art-dept.com](http://www.art-dept.com)



# Art Department



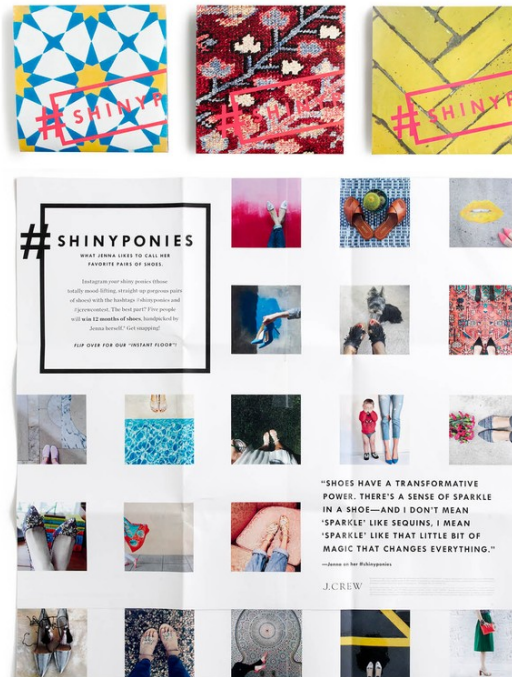
Mark DeMott

[www.art-dept.com](http://www.art-dept.com)

# Art Department



ITALIAN BALLET FLATS



Mark DeMott



# Art Department



Mark DeMott

[www.art-dept.com](http://www.art-dept.com)

# Art Department



*J. Crew*  
ITALIAN CASHMERE

Mark DeMott

[www.art-dept.com](http://www.art-dept.com)

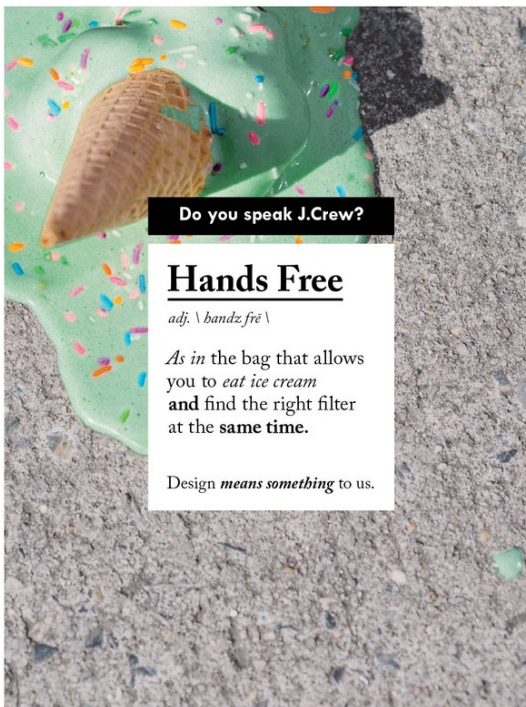


# Art Department



Mark DeMott

# Art Department

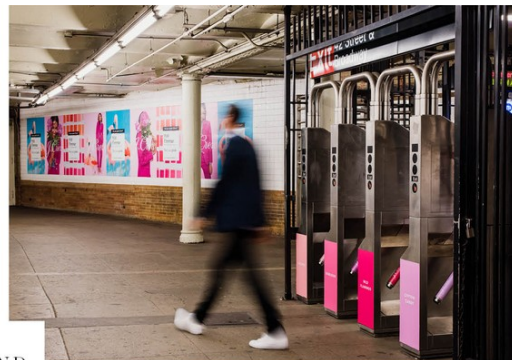


Mark DeMott

[www.art-dept.com](http://www.art-dept.com)



# Art Department



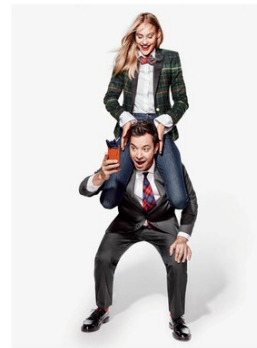
SUBWAY TAKEOVER AND OUTDOOR



Mark DeMott

[www.art-dept.com](http://www.art-dept.com)

# Art Department

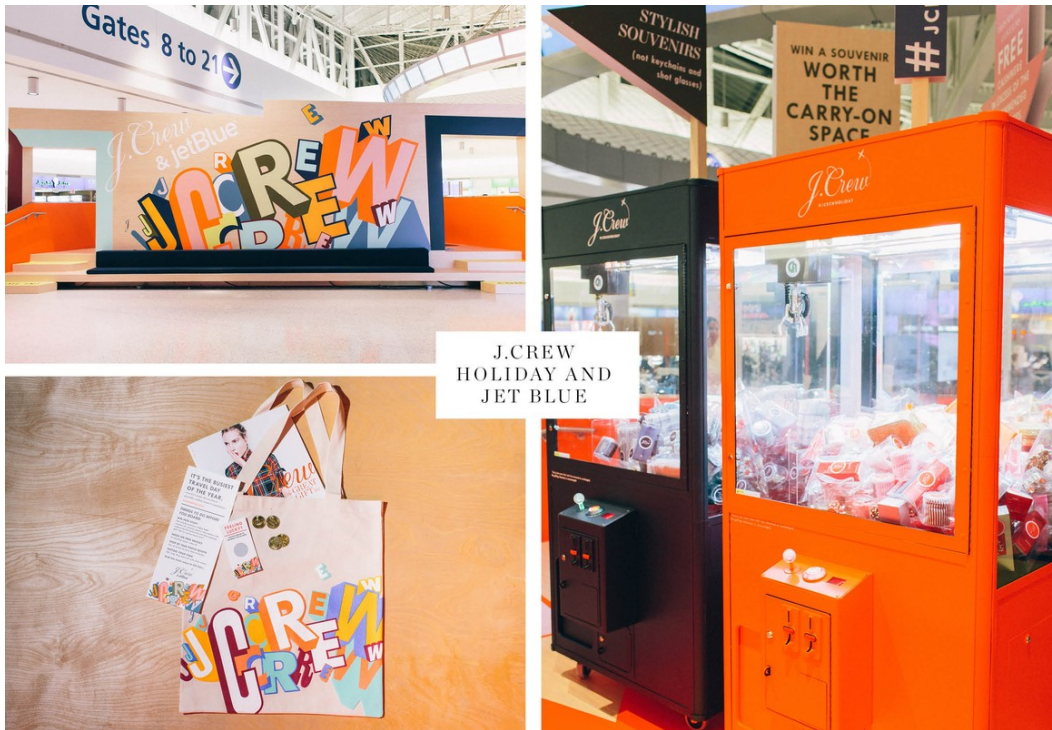


Mark DeMott

[www.art-dept.com](http://www.art-dept.com)



# Art Department



Mark DeMott

[www.art-dept.com](http://www.art-dept.com)