

Art Department



Ben Watts

www.art-dept.com

Art Department



Ben Watts

www.art-dept.com

Art Department



Ben Watts

www.art-dept.com

Art Department



Ben Watts

www.art-dept.com

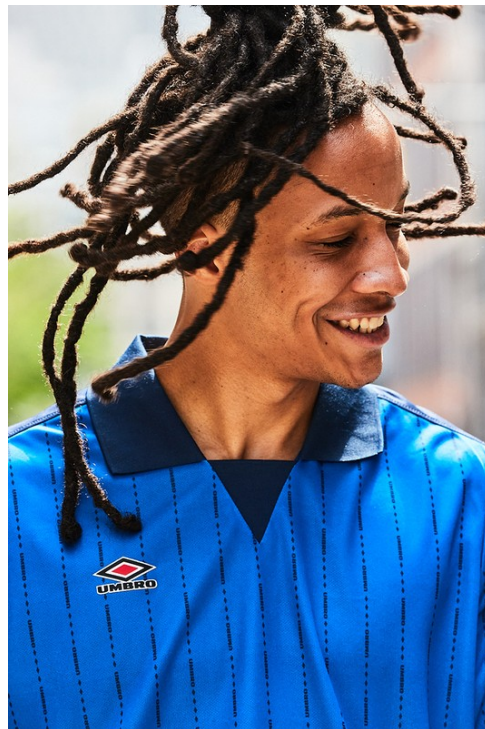
Art Department



Ben Watts

www.art-dept.com

Art Department



Ben Watts

www.art-dept.com

Art Department



Ben Watts

www.art-dept.com

Art Department



Ben Watts

www.art-dept.com

Art Department



Ben Watts

www.art-dept.com

Art Department



Ben Watts

Art Department



Ben Watts

www.art-dept.com

Art Department



Ben Watts

www.art-dept.com

Art Department



Ben Watts

www.art-dept.com

Art Department



Ben Watts

www.art-dept.com

Art Department



Ben Watts

www.art-dept.com

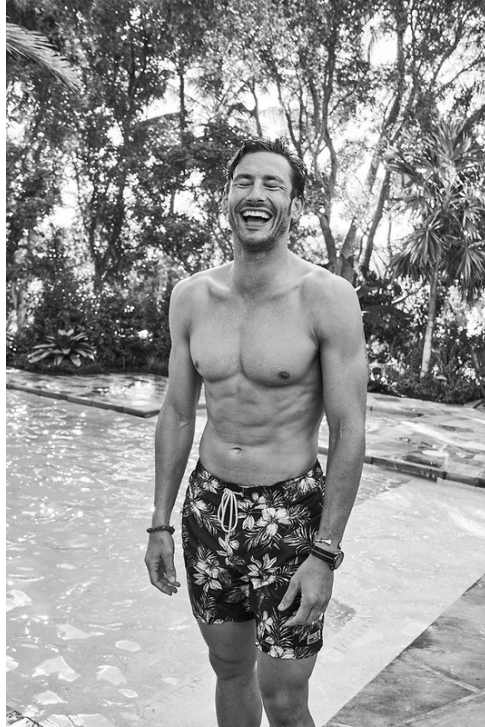
Art Department



Ben Watts

www.art-dept.com

Art Department



Ben Watts

www.art-dept.com

Art Department



Ben Watts

www.art-dept.com

Art Department



Ben Watts

www.art-dept.com

Art Department



Ben Watts

www.art-dept.com

Art Department



Ben Watts

www.art-dept.com

Art Department



Ben Watts

www.art-dept.com

Art Department



Ben Watts

www.art-dept.com

Art Department

STYLE / Sommermode

Smoking
€290 Euro
Hemd
Manchonia
Isolyde
395 Euro
Fliese
125 Euro
Hals
Ralph
Ruff
Schuhe
Tom Ford
1.000 Euro
ges. bel.



168 09/16 - März 2015



Hemd
1100 Euro
Hose
580 Euro
Schuhe
Bottega Veneta
Schuhe
Chorek's
325 Euro
Hals
St. Classic
Saint Laurent
280 Euro

STYLE / Sommermode

Smokingjacket
13.200 Euro
Hose
7.300 Euro
Hemd
5.500 Euro
Fliese
380 Euro
Hals
Lacoste Veltre
Schuhe
Tom Ford
1.000 Euro
ges. bel. Lodenfrey
Sonnenschirm
St. Classic
Saint Laurent
230 Euro



172 09/16 - März 2015



Anzug
200 Euro
Hemd
110 Euro
Hals
Rosa
Krawatte
Polo Ralph
Lauren
100 Euro
Schuhe
Chorek's
200 Euro
Abendhose
Prada
1.600 Euro

Ben Watts

www.art-dept.com

Art Department

STYLE / Sommermode



Sakko
1070 Euro
Hose
274 Euro
Langarm-Short
560 Euro
also
Classic

118 09/16 - Mai 2014



Jacke
2390 Euro
Shorts
390 Euro
Schal
Preis auf Anfrage
also
Erwangenfalte
Regatta

Brille „St. Classic“
Swiss Laurent
200 Euro

Armbanduhr Serie 211



Ben Watts

www.art-dept.com

Art Department



Ben Watts

www.art-dept.com

Art Department



Ben Watts

www.art-dept.com

Art Department



Ben Watts

www.art-dept.com

Art Department



Ben Watts

www.art-dept.com

Art Department



Ben Watts

www.art-dept.com

Art Department



>Lorem ipsum dolor
sit amet, consectetur
adipiscing elit,
Macones id erat
id magna posuere
liberabit id tunc elit.
Praesent accumsan
dignissim sed nec
imperdiet. Aenean



>Lorem ipsum dolor
sit amet, consectetur
adipiscing elit,
Macones id erat
id magna posuere
liberabit id tunc elit.
Praesent accumsan
dignissim sed nec
imperdiet. Aenean

Ben Watts

www.art-dept.com

Art Department



Loewen ipsum dolor sit amet, consectetur adipiscing elit. Maecenas id dui id sapien porttore lobortis id quis elit. Praesent accumsan dignissim enim nec imperdiet. Aenean



Loewen ipsum dolor sit amet, consectetur adipiscing elit. Maecenas id dui id sapien porttore lobortis id quis elit.



Loewen ipsum dolor sit amet, consectetur adipiscing elit. Maecenas id dui id sapien porttore lobortis id quis elit.

Ben Watts

www.art-dept.com

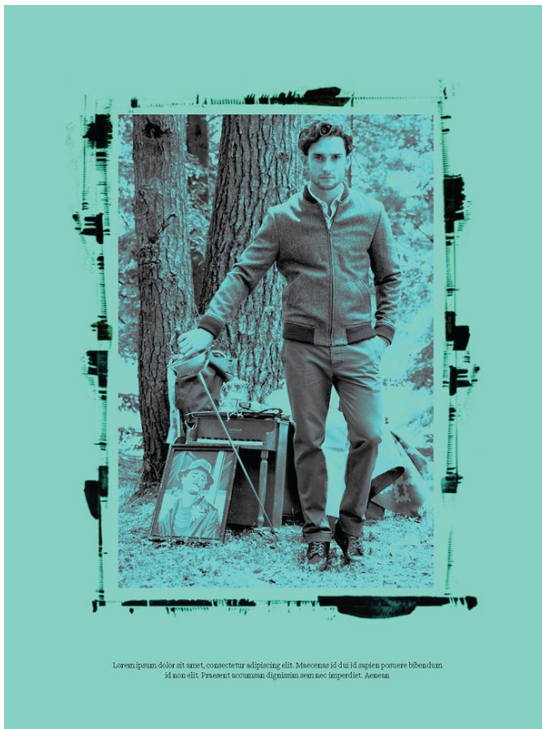
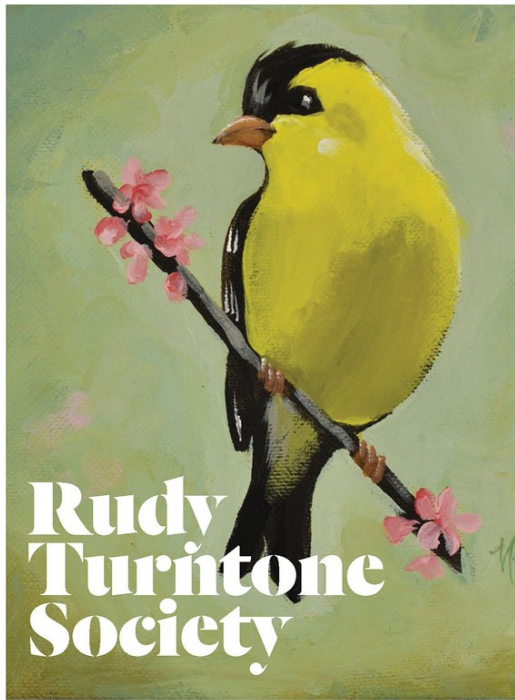
Art Department



Ben Watts

www.art-dept.com

Art Department



Ben Watts

www.art-dept.com

Art Department



Ben Watts

www.art-dept.com

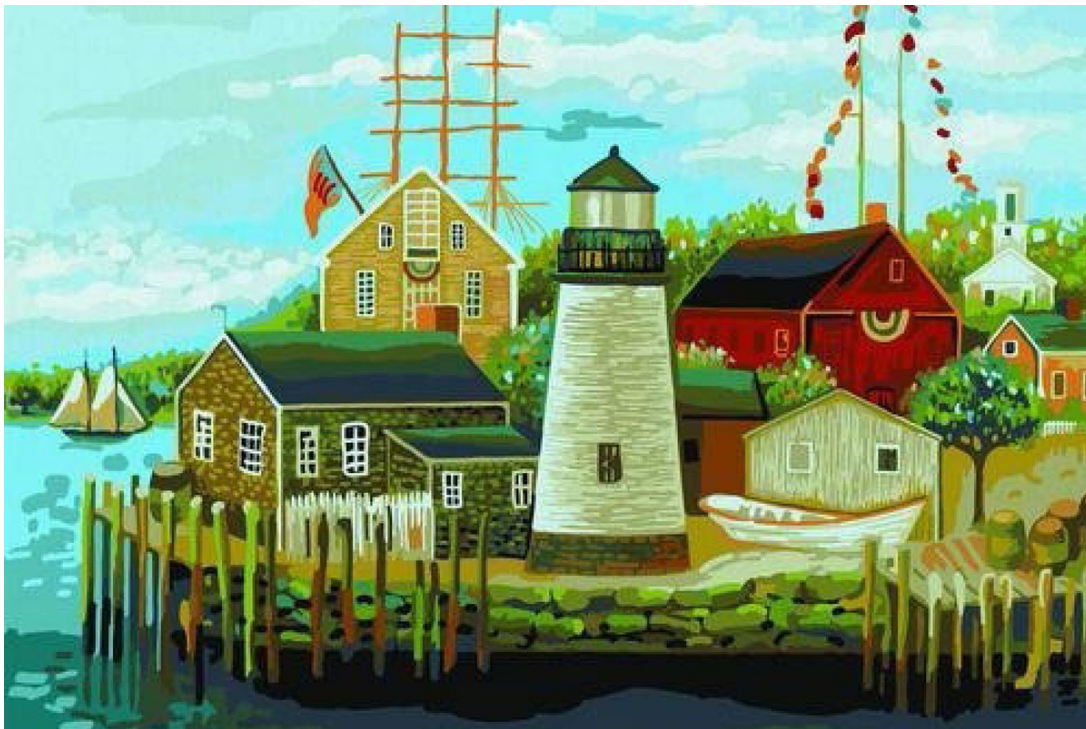
Art Department



Ben Watts

www.art-dept.com

Art Department



Ben Watts

www.art-dept.com

Art Department



Ben Watts

www.art-dept.com

Art Department



Ben Watts

www.art-dept.com

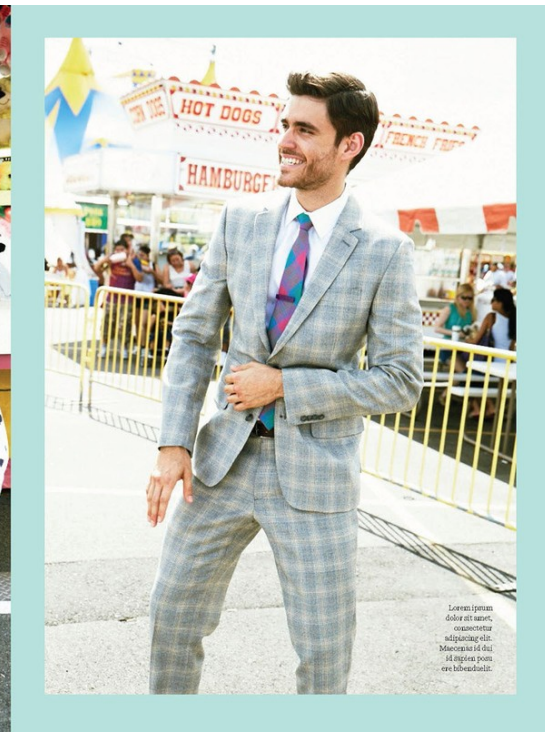
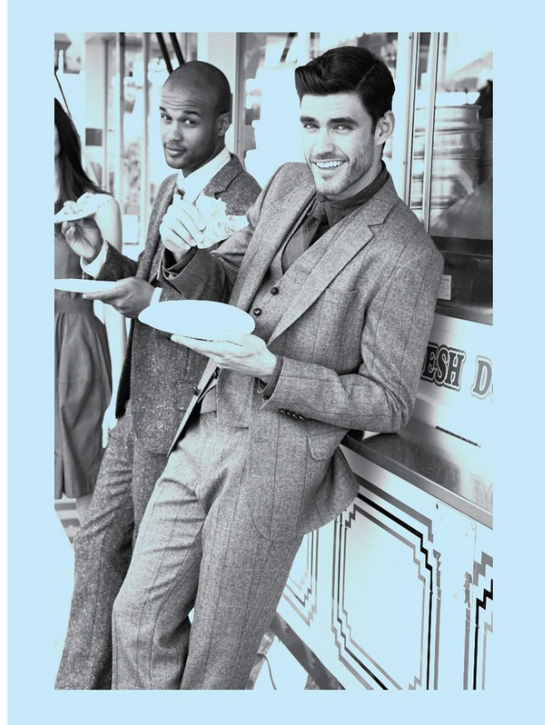
Art Department



Ben Watts

www.art-dept.com

Art Department



Ben Watts

www.art-dept.com

Art Department



Ben Watts

www.art-dept.com

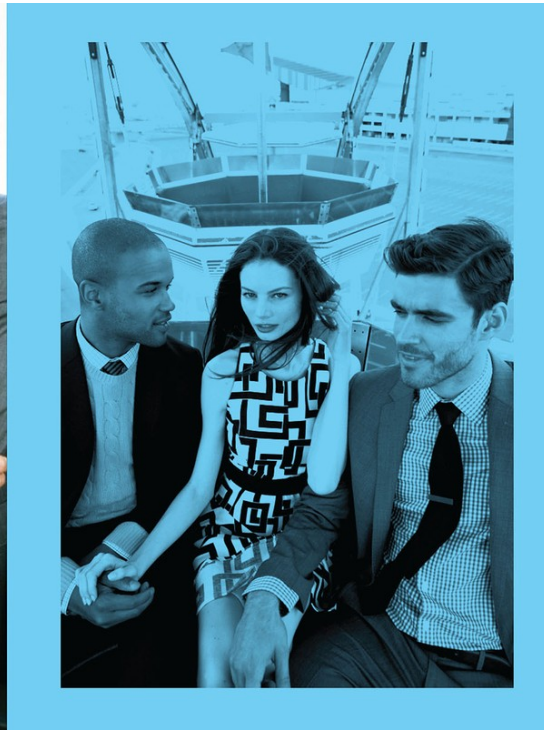
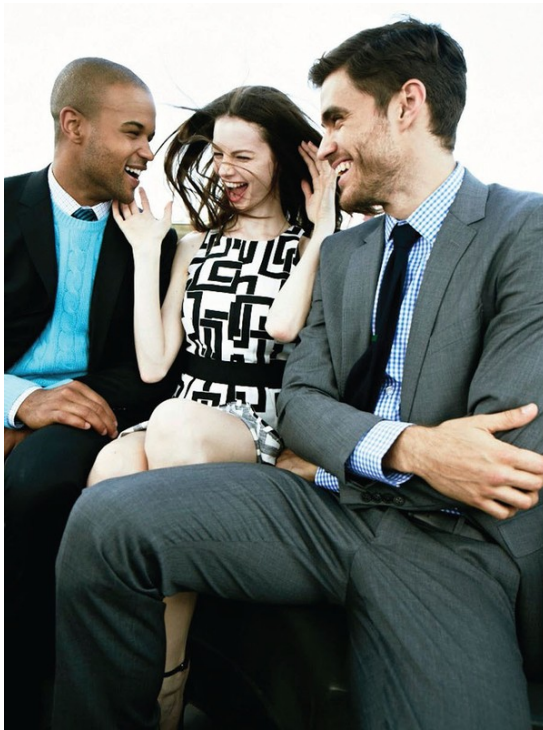
Art Department



Ben Watts

www.art-dept.com

Art Department



Ben Watts

www.art-dept.com

Art Department



Ben Watts

www.art-dept.com

Art Department



Ben Watts

www.art-dept.com

Art Department



STYLE / Herbst/Winter-Mode



Ben Watts

www.art-dept.com

Art Department



STYLE / Herbst/Winter-Mode



208 02/16 - September 2015



Ben Watts

www.art-dept.com

Art Department



Ben Watts

www.art-dept.com

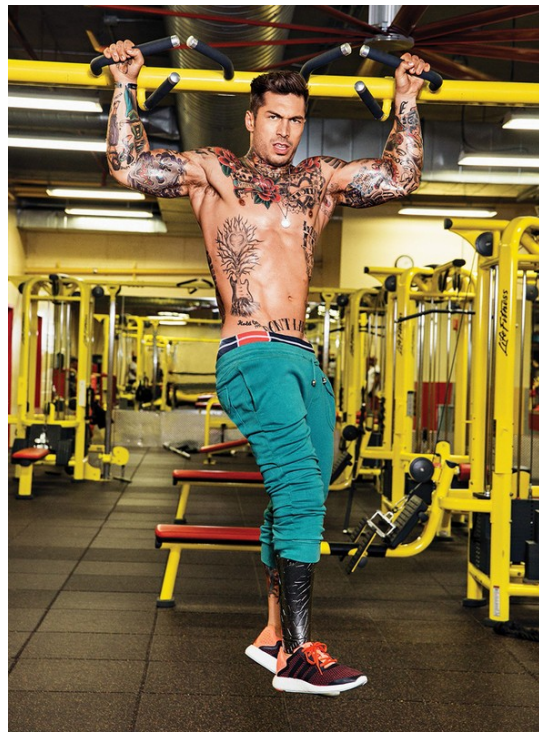
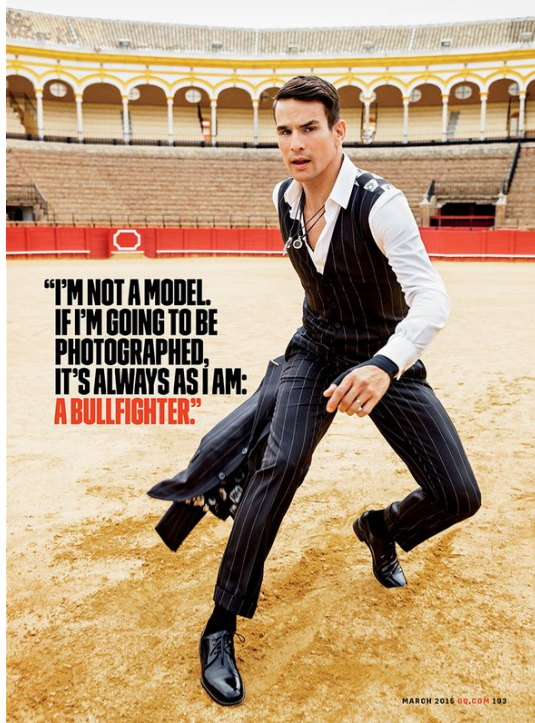
Art Department



Ben Watts

www.art-dept.com

Art Department



Ben Watts

www.art-dept.com

Art Department



Ben Watts

www.art-dept.com

Art Department



Ben Watts

www.art-dept.com

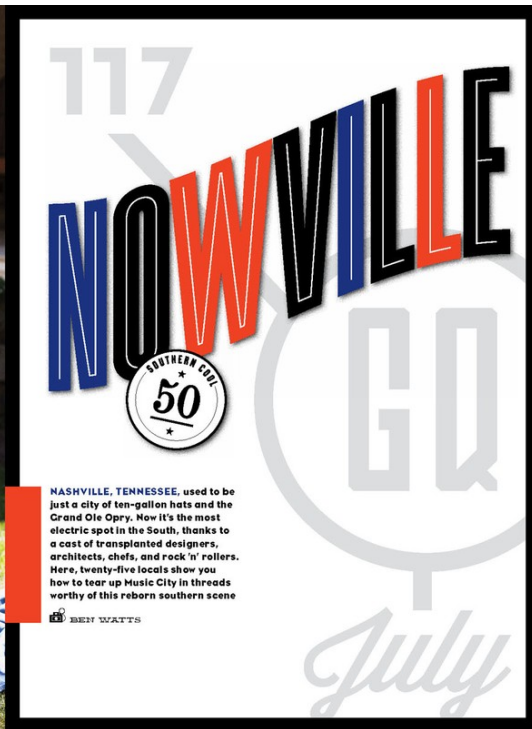
Art Department



Ben Watts

www.art-dept.com

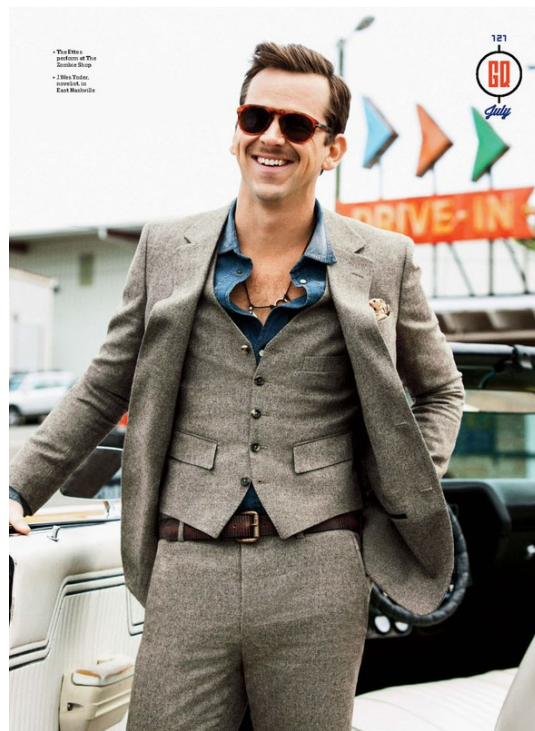
Art Department



Ben Watts

www.art-dept.com

Art Department



Ben Watts

www.art-dept.com

Art Department



Ben Watts

www.art-dept.com

Art Department



Ben Watts

www.art-dept.com

Art Department



Ben Watts

www.art-dept.com

Art Department



THE NO-BRO CARGO

Forget the hootie and the bloofish heritage. **CARGO PANTS** are back, because designers have cut the bagging, sagging excess. The new ones should fit just like your jeans: slim and straight. **BEN WATTS**

Don't call the pockets full of gear. No need to promote the new, slimmer lines of these pants.

Designer underwear guru Jay Adler Eagle-Head looks on the hip, and he's back to the new line "Something Borrowed".

Designers are rethinking the placement of cargo pockets, also moving them to the front of the pants to keep them from the rearview.

THESE PANTS ARE THE NEW CARGO. BY BEN WATTS. STYLING: JESSICA BROWN. HAIR: ANDREW GARDNER. MAKEUP: JESSICA BROWN. SHIRT: CALVIN KLEIN. TIE: CALVIN KLEIN. JEANS: CALVIN KLEIN. SHOES: CALVIN KLEIN.

Ben Watts

www.art-dept.com

Art Department

New pop
Your go-to black dress feels safe. But consider it a summer break: Change to a bolder hue with black and white stripes. Or try black and white stripes with a pop of color. As risky as it sounds, but for really easy, do the white. *De Wit* (see p. 102) | \$200 | Suit: CA Carolina Herrera, \$130; Shirts: Green, \$40; Hat: Eugenia Kim, \$295; Shoes: M.C. by Matthew Williamson, \$120; Camisole: Carolina Herrera, \$120; to \$1,400; Shoes: Marc by Marc Jacobs, \$130; On-Air: dress, Elizabeth and James, \$445; Shoes, Miu Miu, \$395
Fashion director, Eryn Metzner

Gabe Saporta
lead singer

Ryland Blackinton
guitarist

Alex Suarez
bass player

Nate Navarro
drummer

Mila de Wit
model

Victoria Asher
keytarist

Cobra Starship presents...
YOUR NEW PARTY MIX

Hitting "repeat" every time you get dressed to go out? Switch it up with these hot new finds. You may even be moved to mingle more!

Photographs by Ben Watts

Manual
Look Sharp | Live Smart

GQ Endorses

The Incredibly Fly Bomber Jacket

— Run, don't walk, to your favorite style franchise and put down some cash for a black leather bomber jacket. This jacket has just the right hoar. It was pop-cultured by fighter pilots during World War II and gives the army-Navy specification number, A-2. The 2011 version is all black (think the Indiana Jones brown) with just enough military details to keep the macho edge going. Wear it in all the ways hip head-nurse: 1. Color does here—and keep it on inside the club to drop a bomb on the competition. —J.W. MOORE

PHOTOGRAPHS BY BEN WATTS

Clockwise from top left: Ballo (\$2,095) | Dolce & Gabbana (\$1,020) | Diesel (\$380) | JILA DINA (\$1,300)
Where to buy: www.gq.com/gqshop

OCTOBER 2011 GQ.COM 77

Ben Watts

www.art-dept.com

Art Department



A WHOLE GRIP OF FLASH
 PHOTOGRAPHED BY BEN WATTS

PHOTOGRAPH BY BEN WATTS FOR ART DEPARTMENT. STYLING: JESSICA LANGE FOR ART DEPARTMENT. ASSISTANT STYLING: JESSICA LANGE FOR ART DEPARTMENT. MAKEUP: JESSICA LANGE FOR ART DEPARTMENT. HAIR: JESSICA LANGE FOR ART DEPARTMENT. PROP STYLING: JESSICA LANGE FOR ART DEPARTMENT. SET DESIGN: JESSICA LANGE FOR ART DEPARTMENT. ART DEPARTMENT.COM AND WWW.ART-DEPT.COM

DIRTY: COTTON
 STRIPED V-NECK SWEATERS
 AND JEANS: HUGO BOSS BY JILL
 SANDER AND: COTTON
 CUP BY BOB KENNEDY

THE FACE: LECTER BERRY
 COAT AND PANTS BY
 BURBERRY PRORSUM



SKIRT: SINGLE-BREASTED
 JACKET: SKI TANK AND
 SKI GLOVES BY THE NEW
 YORK FRANKIES
 SHOES BY LACOSTE
 AND: WILSON WOODTOP
 CREAMER BY BIRKEN

COTTON STRIPED SWEATERS
 CUFF AND
 COTTON SHIRT BY BOSS
 SLEUCHON AND STRAIN
 TIE: BY BURBERRY



Ben Watts

www.art-dept.com

Art Department



COTTON PLAIN TUBEDO
JACKET COTTON-TUBEDO
SHIRT AND COTTON
PANTS BY TOMMY HILF
RISER COLLECTION
SHIRT: PANTS BY
JUANPAOLO GABRIEL
AND SHOES BY BUNGE

BUDE SAKAI JACKET
COTTON SHIRT IN
SHIRT AND COTTON
PANTS BY TOMMY HILF
LEATHER-HOODTOP HEAD
SET BY P'S AND COTTON
CAP BY BOB BERTHO



COTTON SHIRT BEAUTY
AND SUIT COTTON SHIRT
AND COTTON SHIRT BY
DOLCE & GABBANA
TRUNK PANTS BY BOB
BUNGE AND SHOES
MADE BY BLIZZARD
HORN BEANS TOP AND
THE SHIRT BY DE PAUL
LIP LINE TECHNICAL HOOD
NECKLESS JACKET AND
PANTS BY BOB BERTHO

Ben Watts

www.art-dept.com

Art Department



SEE DESIGN WITH TRAG AND
EMBROIDERED
MOTIF BY FRANK
GRUNIG AND SEIZ
DESIGNED BY KOSUDA



SHIRTS COUNTRY PITCH
EMBROIDERED AND
LEATHER LACE UP BUCKLE
SHIRT BY MITSUBISHI
AND INTER LEATHER
PULLOVER COATED BY
LACRADA. SEIZ SEIZ
LEATHER JACKET AND
COTTON LINEN SHIRT BY
JOHN VAUGHAN. LEATH-
ER SHIRT SHIRT
DESIGNED BY MITSUBISHI
TOM AND SHIRTS
BY THERRY LARRY



WOMEN AND MEN
SHIRT
SHIRT BY AND
TOM SHIRT BY GARY
KIM COLLECTION
TOM SHIRT BY
BY BOB KENNY AND
COTTON SHIRT BY ROCK
PAPER SHIRT BY
SHIRT BY THOMAS
SHIRT BY
SHIRT BY MA
SHIRT BY
SHIRT BY
SHIRT BY
SHIRT BY
SHIRT BY



WOOL STRIPED DOUBLE
BREASTED SHIRT AND
COTTON SHIRT BY JOHN
VAUGHAN AND SHIRTS
BY THERRY LARRY

Ben Watts

www.art-dept.com

Art Department



COTTON STRIPED SHIRT, BRACKET, SHIRT, COTTON FRONT SHIRT AND COTTON STRIPED TROUSERS BY **TRUSSARDI**. COTTON SHIRT WITH TIE AND FISH EMBROIDERY, COTTON SHIRT, COTTON SHIRT AND SUIT STRIPED TIE BY **TRUSSARDI**



COTTON SHIRT, BRACKET, SHIRT, SUIT, COTTON FRONT SHIRT, COTTON STRIPED TROUSERS BY **PRADA**. BLUE COTTON SHIRT BY **EMPORIO ARMANI**. SUIT, SHIRT, BRACKET, SHIRT, SUIT, TROUSERS AND SUIT TIE BY **THE ROW**. TIE, BRACKET BY **REISS**. AND TIE, TROUSERS, GLOVES BY **LA CRABIA**. GLOVES

SHIRT, BRACKET, SHIRT, COTTON FRONT SHIRT, COTTON STRIPED TROUSERS BY **TRUSSARDI**. COTTON SHIRT WITH TIE AND FISH EMBROIDERY, COTTON SHIRT, COTTON SHIRT AND SUIT STRIPED TIE BY **TRUSSARDI**

STYLING: LINDA LOMBARDO. HAIR: JESSIE WISLAND. MAKEUP: JESSIE WISLAND

Ben Watts

www.art-dept.com