

Art Department

SPRING SUMMER 2013 — VOL. III, ISSUE 19 — FR €20 | USA \$40

PURPLE FASHION

FEATURING **Miranda Kerr**¹³⁴, **Slavoj Zizek**⁴⁰⁹, **Larry Clark**¹⁶²,
Harmony Korine¹⁹², **Phoebe Philo**¹⁷², **Richard Artschwager**¹⁹⁸,
Mathias Augustyniak⁴⁵⁷, and a book by **Ryan McGinley**...



Ben Watts

www.art-dept.com

Art Department



**Lemon double
gabardine
checkered dress
and silk headband
LOUIS VUITTON**

Ben Watts

www.art-dept.com

Art Department



**Rust and bordeaux
satin sleeveless
top and skirt worn
with a Swarovski
crystal Dédale
choker and a Boule
Arpège minaudière
LANVIN with Fay
ankle-strap sandals
SANTONI**

Ben Watts

www.art-dept.com

Art Department



Azalea silk jacket
with belt and flare
pants, fuschia
sunglasses, and
patent leather
boots GUCCI

Ben Watts

www.art-dept.com

Art Department



Ben Watts

www.art-dept.com

Art Department



Pink cotton Secret Garden print top and yellow pants, and a Histoire Générale du Jazz clutch, all by OLYMPIA LE TAN with graphic leather heels FENDI

Ben Watts

www.art-dept.com

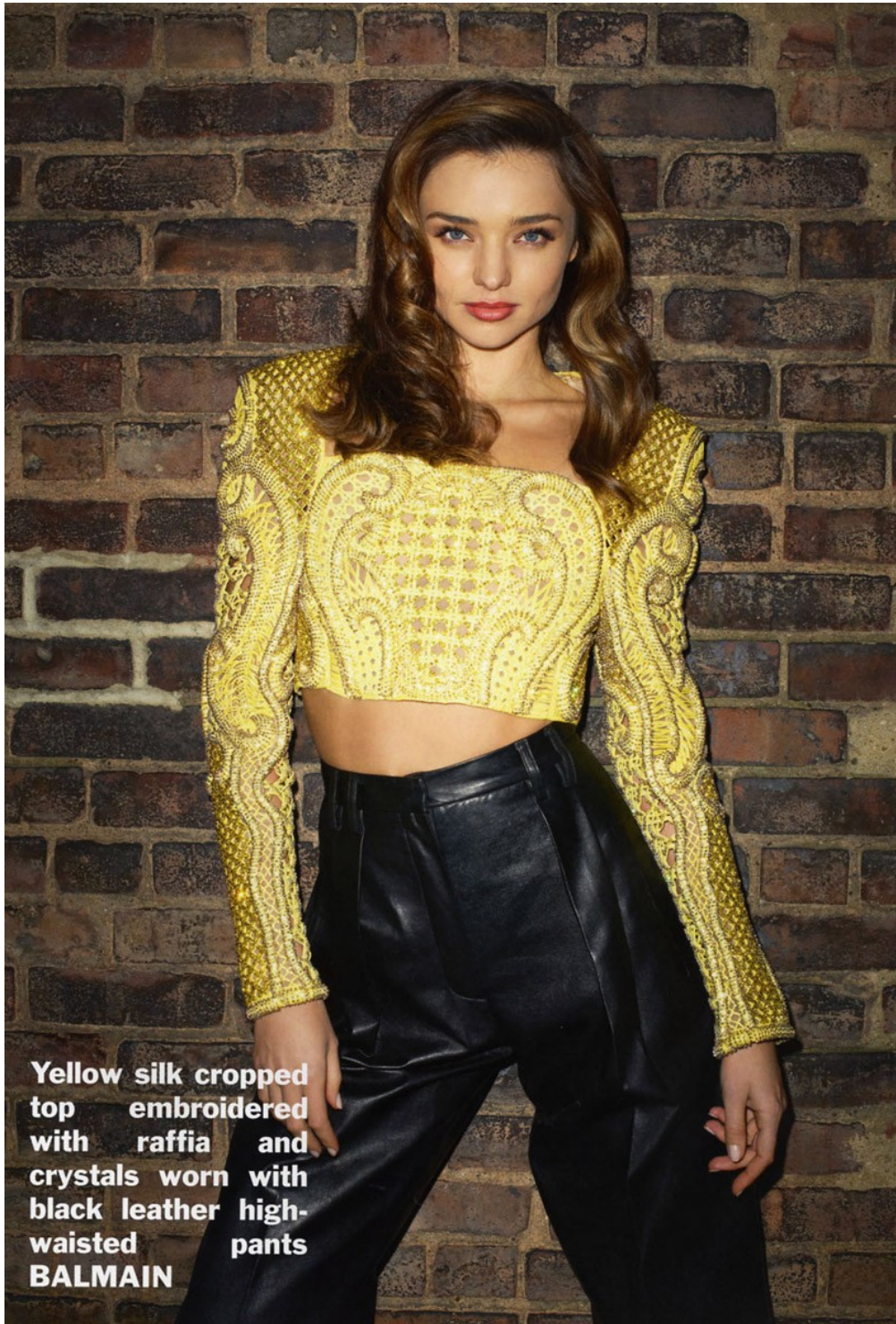
Art Department



Ben Watts

www.art-dept.com

Art Department



Yellow silk cropped top embroidered with raffia and crystals worn with black leather high-waisted pants
BALMAIN

Ben Watts

www.art-dept.com

Art Department

Sweden saharan
dress, felt hat, and
gold brass Opium
necklace SAINT
LAURENT by HEDI
SLIMANE



Ben Watts

www.art-dept.com

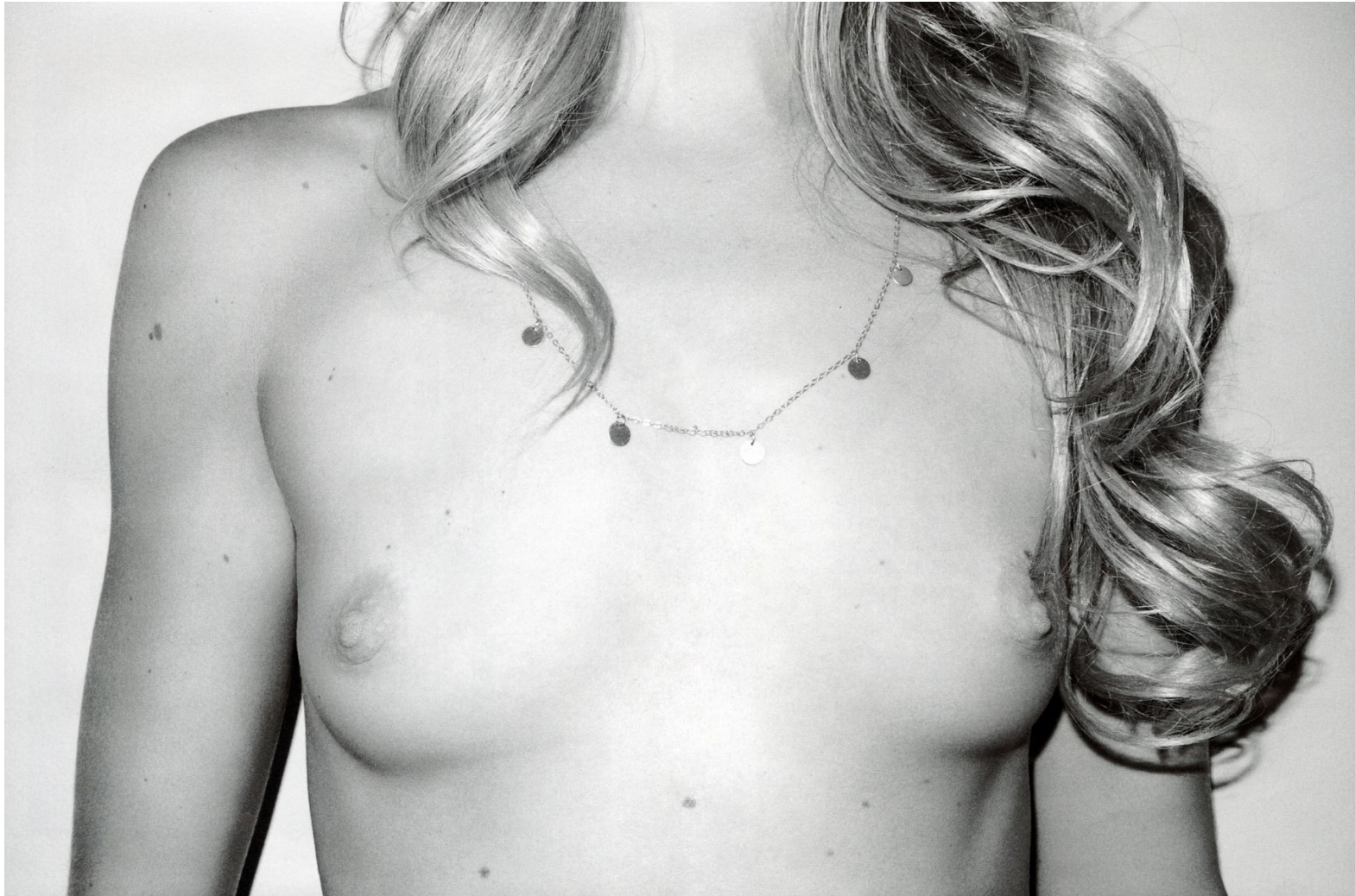
Art Department



Ben Watts

www.art-dept.com

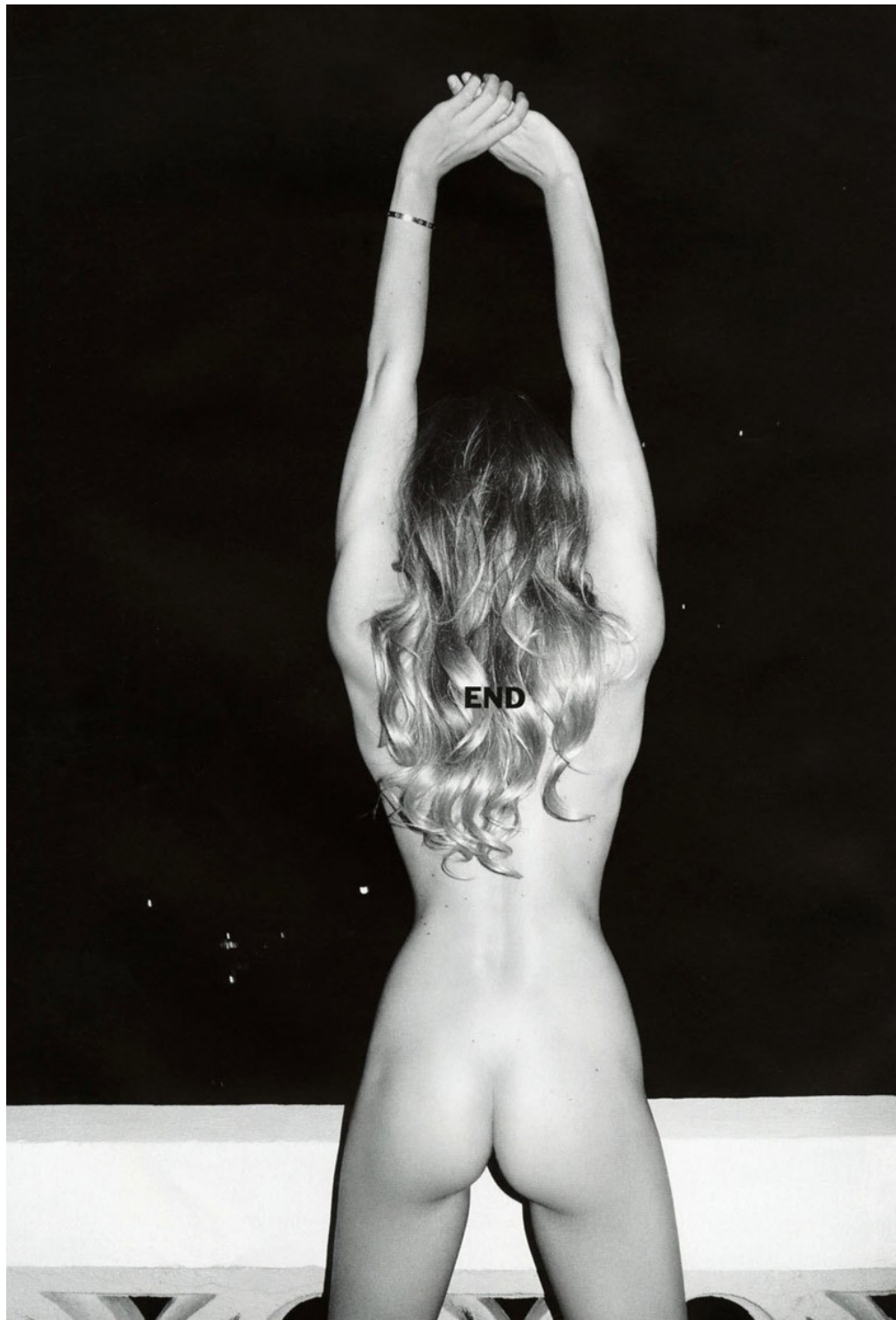
Art Department



Ben Watts

www.art-dept.com

Art Department



Ben Watts

www.art-dept.com

Art Department



Ben Watts

www.art-dept.com

Art Department



Charlotte wears jacket and jeans Fam Irvoll. Briefs and bra model's own. Bangles Hermès. Socks New Lingwood. Shoes Nicholas Kirkwood.

Ben Watts

www.art-dept.com

Art Department

Stella wears jacket Burberry Prorsum. Bra Gap.
Glasses Sophia Kokosalaki x Linda Farrow. Necklace
Karen Walker. Watch Rolex Daytona. Ring Laura Lee.



Ben Watts

www.art-dept.com

Art Department



Ben Watts

www.art-dept.com

Art Department

Stella wears trousers, shirt, tie and shoes Miu Miu. Glasses Sophia Kokosalaki x Linda Farrow. Tie pin New & Lingwood. Watch Ikepod by Marc Newson. Ring Laura Lee.



"The best thing about being young is being able to dream, dress up, and express ourselves no matter of race or gender." STELLA MAXWELL. 22

I-D THE JUST KIDS ISSUE 161

Ben Watts

www.art-dept.com

Art Department



Ben Watts

www.art-dept.com

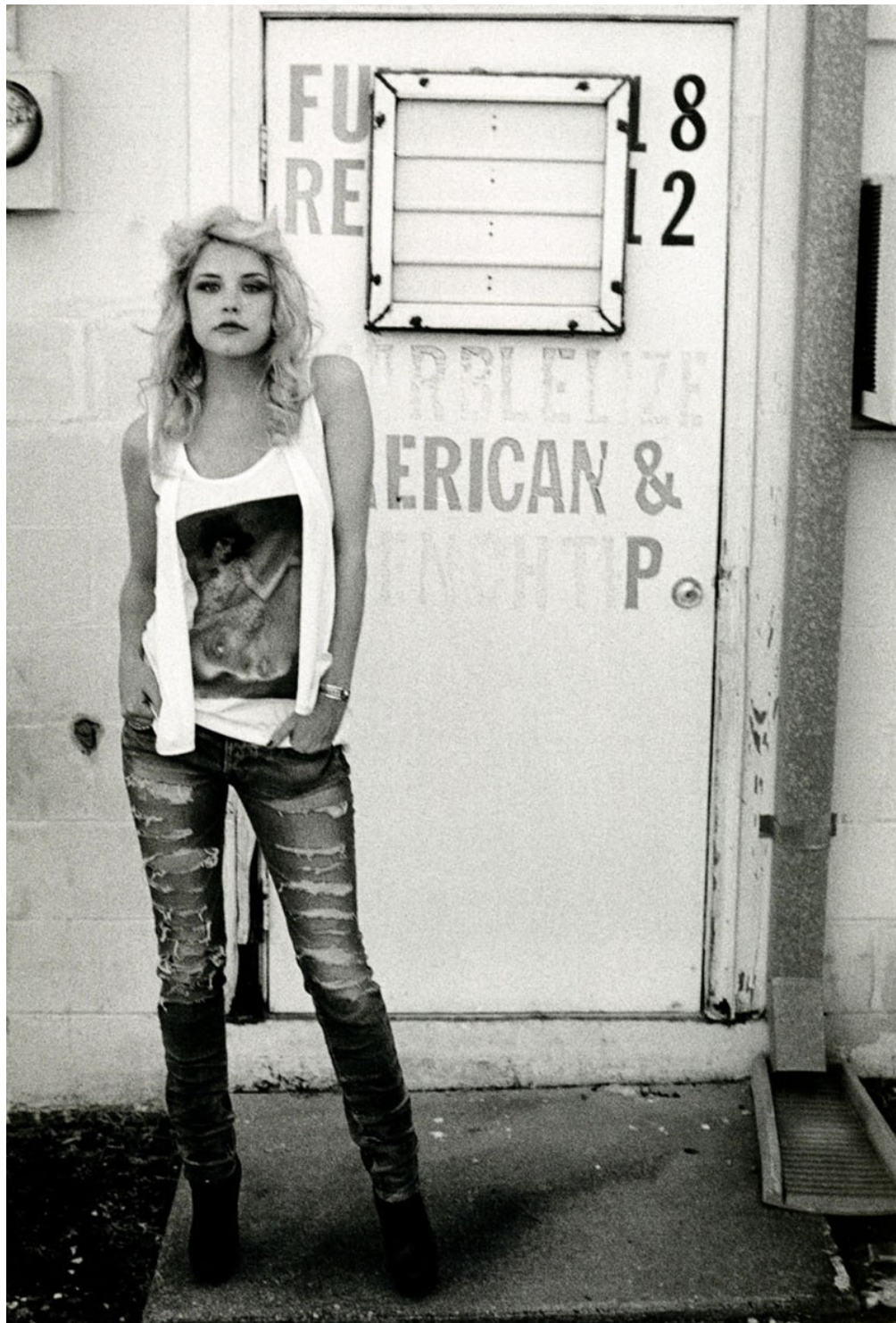
Art Department



Ben Watts

www.art-dept.com

Art Department



Ben Watts

www.art-dept.com

Art Department



Ben Watts

www.art-dept.com

Art Department



Ben Watts

www.art-dept.com

Art Department



Ben Watts

www.art-dept.com

Art Department



Ben Watts

www.art-dept.com

Art Department



Ben Watts

www.art-dept.com

Art Department



A higher calling. Boots with altitude. THIS PAGE: Boots, \$1,155, Tod's. 800-457-TODS. OPPOSITE PAGE: Boots, \$1,450, Reed Krakoff. 877-733-3525. BEAUTY BAZAAR Paul Mitchell Express Ion Curl TurnStyle makes tousled locks easy to achieve (\$137.50).

Ben Watts

www.art-dept.com

Art Department



Ben Watts

www.art-dept.com

Art Department



Ben Watts

www.art-dept.com

Art Department



Ben Watts

www.art-dept.com

Art Department



Ben Watts

www.art-dept.com

Art Department



Ben Watts

www.art-dept.com

Art Department



Ben Watts

www.art-dept.com

Art Department



We have a winner: Ladylike silhouettes and high slits raise the stakes. THIS PAGE: Dress with belt, Carolina Herrera, 212-249-6552. Bag, Hermès. OPPOSITE PAGE: Dress, \$3,950, Belstaff, belstaff.com. Earrings, De Beers. Bracelet (top), \$8,190, Gucci. Bracelet (bottom), \$1,150, Hermès. Clutch, \$995, Perrin Paris 1893. Shoes, \$595, Manolo Blahnik. See Where to Buy for shopping details. Model: Barbara Palvin; hair: Dennis Lanni for Nexxus Salon Hair Care; makeup: Frank B.; manicure: Alicia Torello; production: Atlas Productions; casting: Tali Magal at Freebird (freebirdprod.com); set design: Andy Harman. Shot on location at Meadowlands Racetrack, East Rutherford, NJ (meadowlandsracetrack.com).

Ben Watts

www.art-dept.com

Art Department



Ben Watts

www.art-dept.com

Art Department



A PESO DE OURO

Lily Donaldson (IMG NY) veste top de python com aplicações de ouro, R\$ 30.000, calça de seda, R\$ 7.273, e cinto, R\$ 2.120, tudo Gucci. Na página ao lado, vestido de couro dourado, R\$ 3.488, Patricia Viera. Na dupla anterior, vestido de tule bordado com pacotes de metal, R\$ 2.000, Lança Perfume. Óculos, R\$ 730, Versace para Luxottica; cinto, R\$ 2.120, Gucci; braceletes, R\$ 600, Ellus; carteira, R\$ 7.350, Louis Vuitton.

Edição de moda: PEDRO SALES

Ben Watts

www.art-dept.com

Art Department



Ben Watts

www.art-dept.com

Art Department



Ben Watts

www.art-dept.com

Art Department



Ben Watts

www.art-dept.com

Art Department



Ben Watts

www.art-dept.com

Art Department



Ben Watts

www.art-dept.com

Art Department



Ben Watts

www.art-dept.com

Art Department



Ben Watts

www.art-dept.com

Art Department



Ben Watts

www.art-dept.com

Art Department



Ben Watts

www.art-dept.com

Art Department



Ben Watts

www.art-dept.com

Art Department



Ben Watts

www.art-dept.com

Art Department



Ben Watts

www.art-dept.com

Art Department



Ben Watts

www.art-dept.com

Art Department



Ben Watts

www.art-dept.com

Art Department



Ben Watts

www.art-dept.com

Art Department



Ben Watts

www.art-dept.com

Art Department



Ben Watts

www.art-dept.com

Art Department



Ben Watts

www.art-dept.com

Art Department



Ben Watts

www.art-dept.com

Art Department

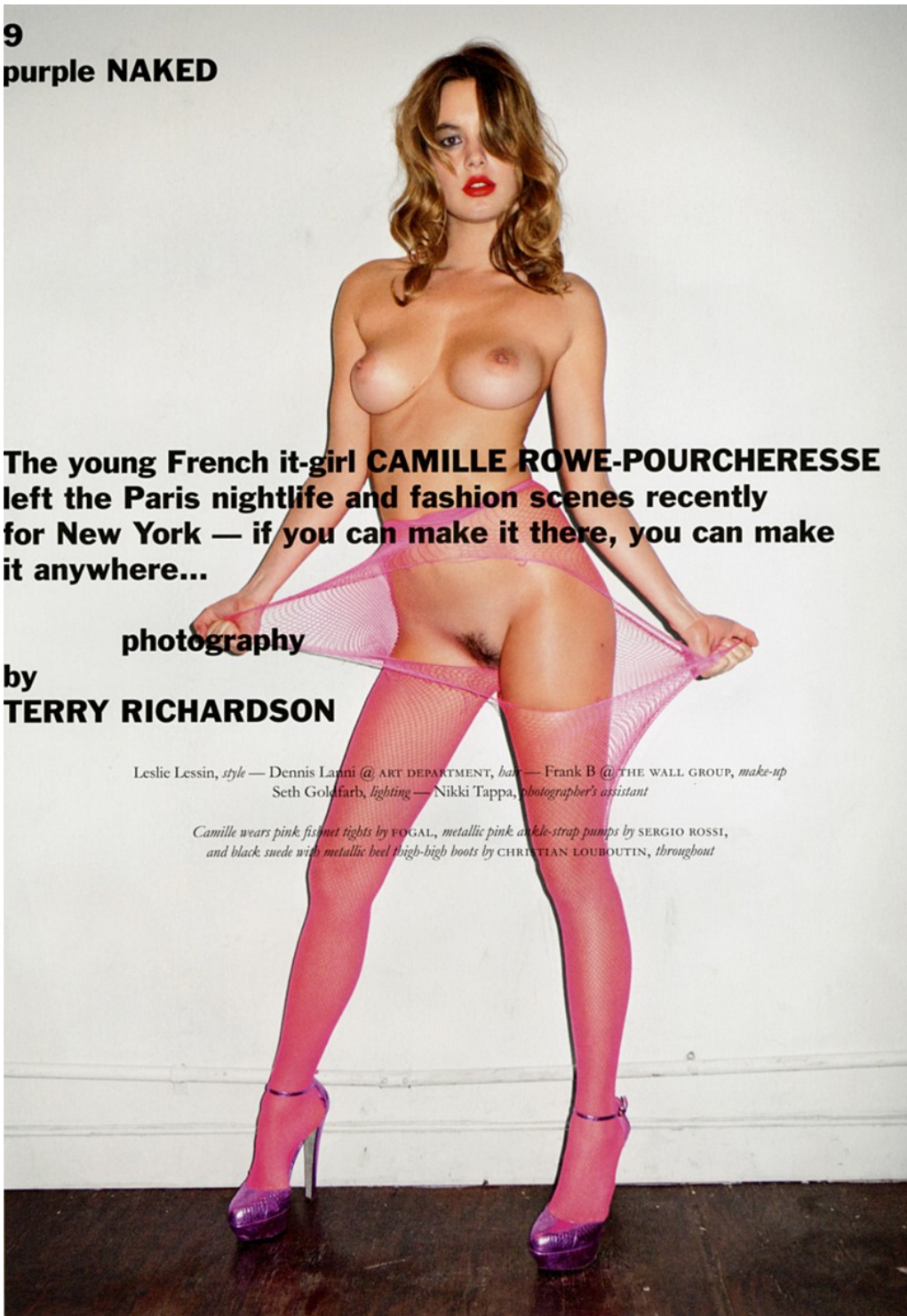
9
purple NAKED

The young French it-girl **CAMILLE ROWE-POURCHERESSE** left the Paris nightlife and fashion scenes recently for New York — if you can make it there, you can make it anywhere...

photography
by
TERRY RICHARDSON

*Leslie Lessin, style — Dennis Lanni @ ART DEPARTMENT, hair — Frank B @ THE WALL GROUP, make-up
Seth Goldfarb, lighting — Nikki Tappa, photographer's assistant*

*Camille wears pink fishnet tights by FOGAL, metallic pink ankle-strap pumps by SERGIO ROSSI,
and black suede with metallic heel thigh-high boots by CHRISTIAN LOUBOUTIN, throughout*



Ben Watts

www.art-dept.com

Art Department



Ben Watts

www.art-dept.com

Art Department



Ben Watts

www.art-dept.com

Art Department



Ben Watts

www.art-dept.com

Art Department



Ben Watts

www.art-dept.com

Art Department



Ben Watts

www.art-dept.com

Art Department



Ben Watts

www.art-dept.com

Art Department



Ben Watts

www.art-dept.com

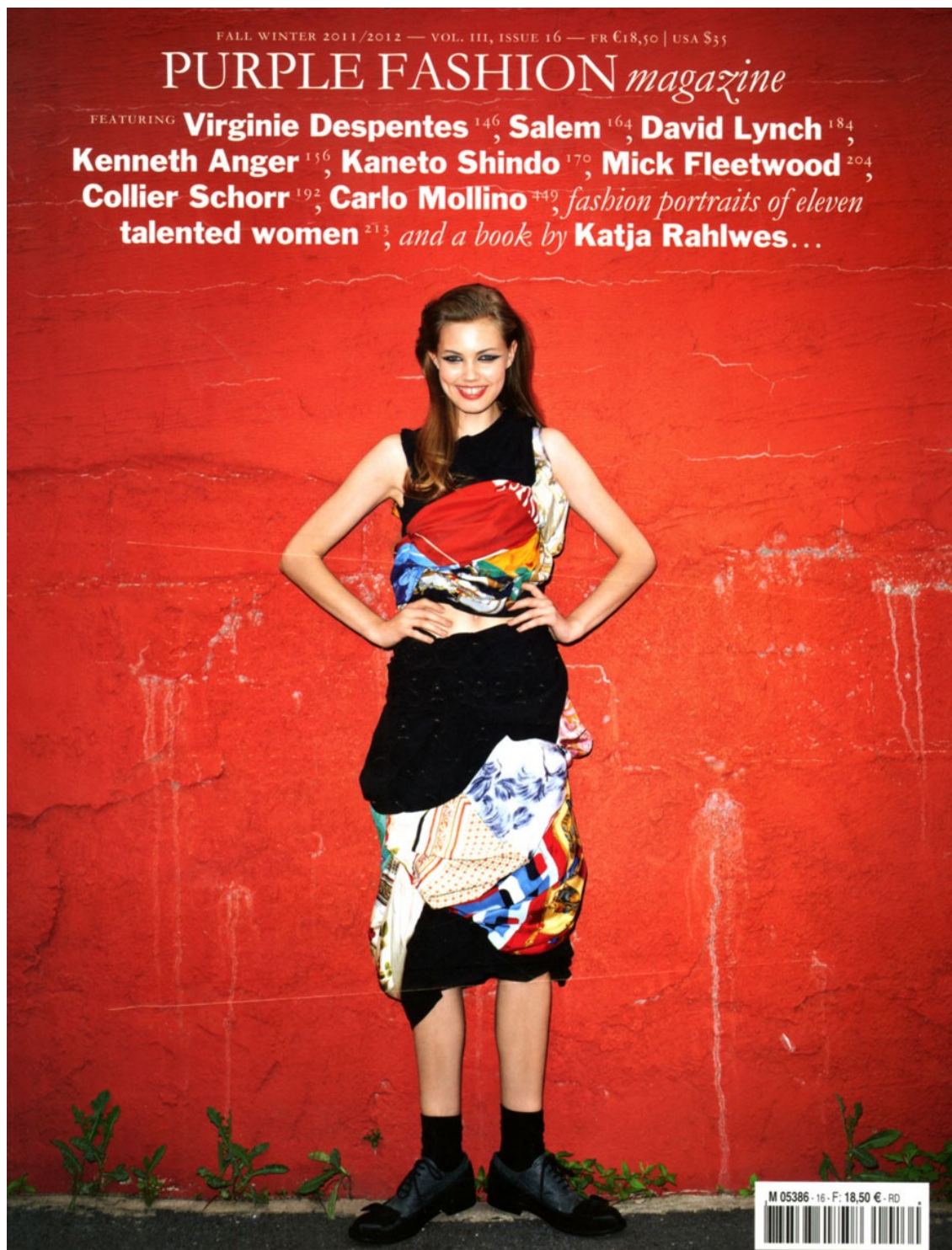
Art Department



Ben Watts

www.art-dept.com

Art Department



Ben Watts

www.art-dept.com

Art Department

White silk poncho
with tuxedo
detail, scuba knit
turtleneck bib, and
wool flight shorts
**ALEXANDER
WANG**



Ben Watts

www.art-dept.com

Art Department



Ben Watts

www.art-dept.com

Art Department

Two-tone tweed
cape and jacket
embroidered with
sequins, wool
crepe pants,
leather gloves,
and calf suede
boots CHANEL



Ben Watts

www.art-dept.com

Art Department



Ben Watts

www.art-dept.com

Art Department



Ben Watts

www.art-dept.com

Art Department



Ben Watts

www.art-dept.com

Art Department



Page de gauche /

Gilet à franges en velours noir,
GIORGIO ARMANI COLLECTION
Pantalon,
VIKTOR & ROLF
Chapeau en velours,
ELLEN CHRISTINE MILLINERY
Écharpe en soie imprimée,
G-STAR
Manchette en onyx avec détails en or,
FENTON
Escarpins compensés,
CHRISTIAN LOUBOUTIN

Cr contre /

Étole en fourrure noire,
GIORGIO ARMANI COLLECTION
Combinaison pantalon à motifs, pied-de-poule,
DIANE VON FURSTENBERG
Chapeau en velours noir,
PATRICIA UNDERWOOD
Au poignet,
ceinture en cuir noir avec boucle en or,
FENTON

Photographe

Cecilia Krue
@ Art Mix

Illustration

Marcell Roda
@ Wernigroup

Coiffure

Dennis Linnel
@ Art Department

Maquillage

Krista Gallego
@ Community NYC

Modèle /s

Aria Egner
@ Supreme

Castings

Stephan Stone

Assistants photographe

Christopher Aris,
Eva Hildeman,
David Iron

Assistants réalisation

Jakob Winer,
Ignat Ojila,
Ariane Zaaria

Remerciements

Michelle Pryor
@ Supreme Management

Ben Watts

www.art-dept.com

Art Department



Ben Watts

www.art-dept.com

Art Department



Ben Watts

www.art-dept.com

Art Department



Ben Watts

www.art-dept.com

Art Department



Ben Watts

www.art-dept.com

Art Department



Ben Watts

www.art-dept.com

Art Department



WWW.OPENINGCEREMONY.US

Ben Watts

www.art-dept.com

Art Department



Ben Watts

www.art-dept.com

Art Department

MINNIE MORTIMER DESIGNER

UPPER EAST SIDE

DEREK BLASBERG You're perfect for that '70s silhouette.

MINNIE MORTIMER I am crazy for the silhouette! Today it is not always considered the most flattering, but it really shows off a woman's shape. Jeans are all about the backside—Calvins from the '70s do the job well.

DB I know that you have your own fashion line. What era do you look to most for that?

MM For my line I am constantly referencing the '60s—Slim Aarons photographs, Hitchcock films, and the flower children.

DB Is there anything about the '70s era that you particularly like?

MM Of course! The party vibe, the gilt, the sparkle, the wild and debauched. I missed the '70s entirely—I was born in the '80s—but I would have loved to do it up.

DB Which of that era's icons would you most likely identify with?

MM Diane von Furstenberg. She gave women the freedom to feel sexy and professional with that wrap dress. I am crazy about all things DVF.

DB You grew up in New York. Did people who were older than you ever talk about New York "in the good old days"?

MM My parents spent some time at Studio 54 and I have questioned them to death about it, poring over the old pictures for clues. It must have been wild, because they won't tell me anything!

DB I know that you live in California now. Do you like that part of the world?

MM Malibu has this free and natural vibe that is the perfect contrast to New York. I love having both sides of that coin. I love L.A. and I love to surf, but New York is where I grew up and where my family and heart are.

DB What's your favorite thing about New York City?

MM The pace. The rate at which ideas are turned over, work is accomplished—the efficiency of it all. That creates a powerful energy.

Top Michael Kors
Bra Calvin Klein Underwear
Jeans vintage Calvin Klein Jeans Belt
Salvatore Ferragamo Necklace Bulgari
Large cuff Patricia von Musulin
Small cuff David Yurman
Rings H&M



Ben Watts

www.art-dept.com

Art Department

DR. LISA AIRAN
DERMATOLOGIST

GRAMERCY PARK

DEREK BLASBERG Let's talk about that hair! Did you like it big and curly like this?

LISA AIRAN The hair is amazing. It reminds me of Guy Bourdin photos from the '70s.

DB Have you ever worn so much denim and sparkles?

LA I am not usually a denim and sparkles girl, but I think Chloé did a great job with these.

DB This is obviously a reference to New York in the 1970s. Is there anything about that era that you like?

LA It seemed like a fun, experimental time. People wore their hair big, with bright, colorful makeup, and there was some great fashion: YSL, Halston, Giorgio di Sant'Angelo, Karl Lagerfeld doing Chloé, Zandra Rhodes, Jean-Charles de Castelbajac.

DB Which '70s icon would you most likely identify with?

LA I love the way Bianca Jagger wore Victorian white then. Jerry Hall looked so great with her long, flowing hair and Mugler dresses. The people I identify with are Jane Birkin, Charlotte Rampling, Loulou de la Falaise. These women had their own identifiable styles, which seemed effortless. Marisa Berenson was, and still is, super chic. I love her in the new movie *I Am Love*, which epitomizes high style.

DB You're from Chicago. Did you always know that you wanted to move to New York City?

LA New York is the greatest place to live. There are so many interesting people. Eventually all of your friends come through NYC.

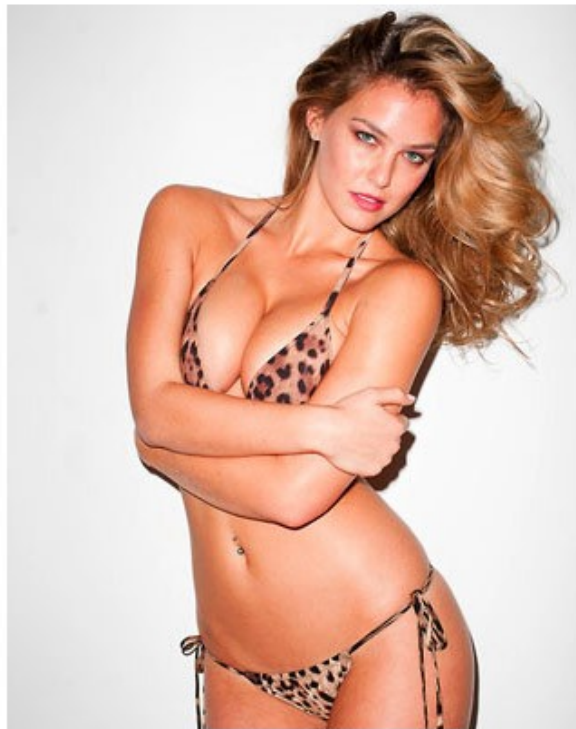
Jeans and shirt Chloé
Belt Givenchy by Riccardo Tisci
Necklace Piaget
Earrings Topshop
Ring Patricia von Musulin



Ben Watts

www.art-dept.com

Art Department



Ben Watts

www.art-dept.com

Art Department



“WHETHER IT’S
BEING A RAPPER OR
AN ACTOR, I’D CHOOSE
THAT OVER BEING
IN A SUIT-AND-TIE
ANT FARM. I’VE BEEN
IN THAT WORLD. I’VE
INTERINED BEFORE.”
—*Vinny* GUADAGNINO

*THIS PAGE: ON VINNY: SUIT: TOM FORD.
UNDERWEAR: EMPORIO ARMANI. FEDORA:
BAILEY OF HOLLYWOOD. NECKLACE:
KONSTANTINO. SHOES: GIORGIO ARMANI.
ON BAE: SWIMSUIT: DOLCE & GABBANA.
SHOES: CHRISTIAN LOUBOUTIN. OPPOSITE:
ON BONNIE: PANTS: DOLCE & GABBANA. HAT:
BAILEY OF HOLLYWOOD. SUNGLASSES:
EMPORIO ARMANI. WATCH: OMEGA. SHOES:
D&G. ON BAE: SWIMSUIT: OMO NORMA
KAMALI. SHOES: GIUSEPPE ZANOTTI.*

Ben Watts

www.art-dept.com

Art Department



Ben Watts

www.art-dept.com

Art Department



Ben Watts

www.art-dept.com

Art Department



Ben Watts

www.art-dept.com

Art Department



Ben Watts

www.art-dept.com

Art Department



Ben Watts

www.art-dept.com

Art Department



Ben Watts

www.art-dept.com

Art Department



Ben Watts

www.art-dept.com

Art Department



Ben Watts

www.art-dept.com

Art Department



Ben Watts

www.art-dept.com

Art Department



Ben Watts

www.art-dept.com

Art Department



Ben Watts

www.art-dept.com

Art Department



Ben Watts

www.art-dept.com

Art Department



Ben Watts

www.art-dept.com

Art Department



Ben Watts

www.art-dept.com

Art Department



Ben Watts

www.art-dept.com

Art Department



Ben Watts

www.art-dept.com

Art Department

mode

MATTHEW
WILLIAMSON

En réalité,
je pense
que
la couleur
est bien
plus facile
à porter
que le
mono
chrome.

Après avoir fait le tube vestimentaire de l'été dernier chez H&M, le prodige anglais, exilé à New York pendant la quasi-totalité des années 00, est revenu à Londres pour présenter ses collections. Un coup de soleil fatal à la grisaille valant coup de projecteur sur le coloriste acrobatique Matthew Williamson par l'image et la parole.

Robe verte
avec manches en soie
de couleur crème
et paillettes,
MATTHEW WILLIAMSON
Bracelets fluorescents,
PAMELA LOVE

Ben Watts

www.art-dept.com

Art Department



Ben Watts

www.art-dept.com

Art Department



CAMICIA IN SETA STAMPATA CON FIOCCO E
CULOTTES A VITA ALTA, ALEXANDER MCQUEEN;
CINTURA SCREAMING MIMI'S; BRACCIALI
ERMANNNO SCERVINO, PAGINA ACCANTO,
REGGISENO IN TULLE, LA PERLA PRÉ-T-A-PORTER;
TURBANTE VINTAGE SCREAMING MIMI'S; MAXI
COLLANA VINTAGE; BRACCIALI IN LEGNO, SONIA
RYKIEL; BRACCIALI DI PLEXIGLAS, BORBONESE.
IL MAKE UP, OMBRETTO MONO COULEUR TOTALLY
BLACK PER UN VERO EFFETTO SMOKY EYES E
ZIGOMI SCOLPITI CON IL BLUSH DOUCEUR
COMPACT CORAIL. LABBRA AL NATURALE CON
ROUGE APPEAL GOYAVE, TUTTO CLARINS.

Ben Watts

www.art-dept.com

Art Department



Ben Watts

www.art-dept.com

Art Department



Ben Watts

www.art-dept.com

Art Department



Ben Watts

www.art-dept.com

Art Department



Ben Watts

www.art-dept.com

Art Department



Ben Watts

www.art-dept.com

Art Department



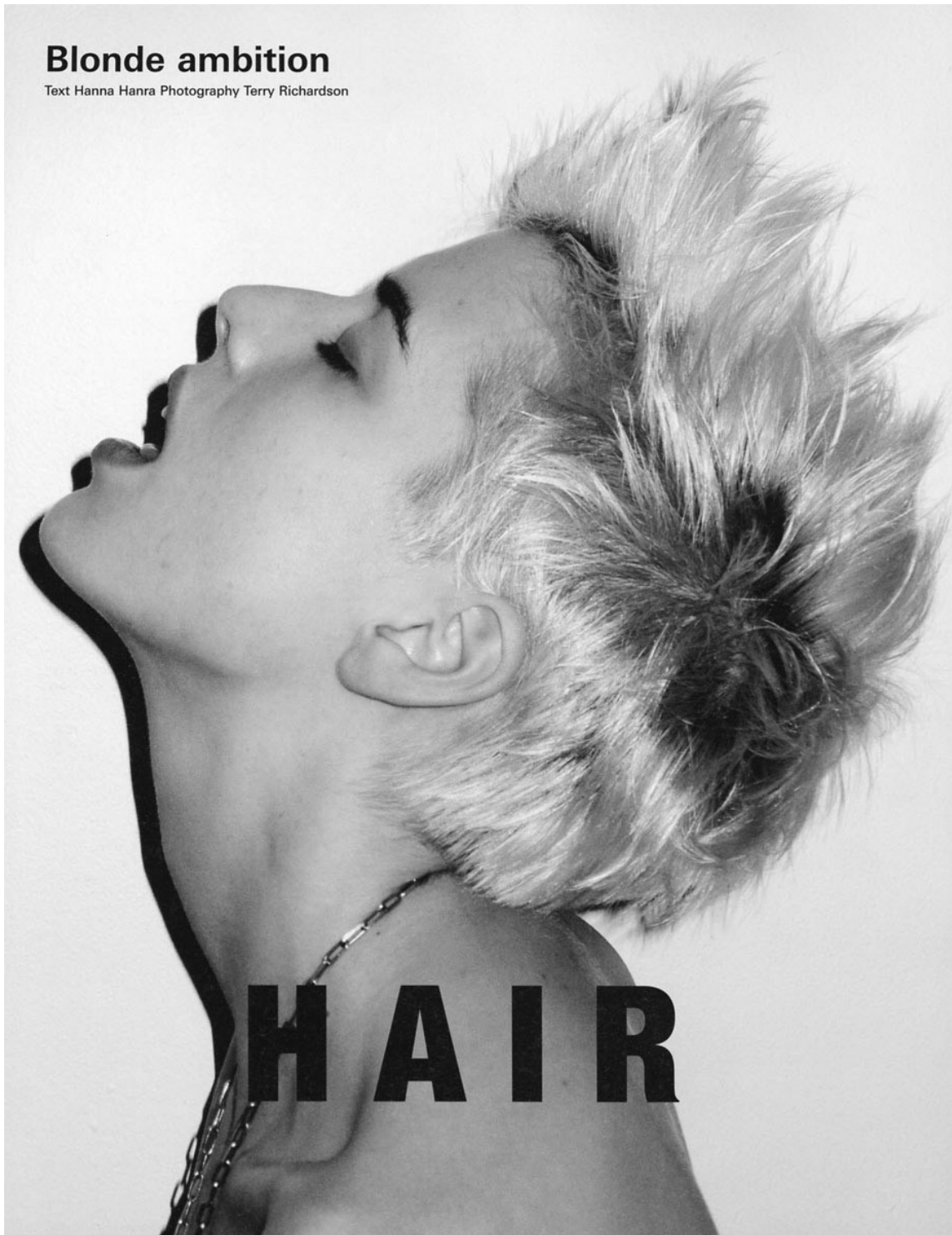
Ben Watts

www.art-dept.com

Art Department

Blonde ambition

Text Hanna Hanra Photography Terry Richardson



Ben Watts

www.art-dept.com

Art Department



86 I-D THE AGYNESS DEYN MAY 2008

Ben Watts

www.art-dept.com

Art Department



Ben Watts

www.art-dept.com

Art Department



GOLFINO DI MAGLIA INCROCIATO
SU GONNA DI SETA LACCATA CON
PANNELLI DRAPPEGGIATI. ALEX
SANDRO DELL'ACQUA. TOP DI PIZ-
ZO VINTAGE, SOUTHPAW. PETTINA-
TURE DENNIS LANNI FOR BUMBLE
AND BUMBLE. MAQUILLAGE POLY
OSMOND; MANICURE ROSEANN SIN-
GLETON, ENTRAMBE © ART DEPART-
MENT. SET DESIGN BY CHAD OZIZ-
WID © WWW.MAGNETY.COM. FA-
SHION EDITOR VICTORIA BARTLETT.

Ben Watts

www.art-dept.com

Art Department



Ben Watts

www.art-dept.com

Art Department



Ben Watts

www.art-dept.com

Art Department



ПЫШНЫЕ ЧЕРНЫЕ ОБОРКИ
НА РУКАВАХ И ЛЕГКОМЫС-
ЛЕННЫЙ БАНТ НА ГОЛОВЕ –
В РОЛИ ENFANT TERRIBLE
ВЫ ДОСТОЙНЫ «ОСКАРА».

Платье из органзы и атласа.
Luella; атласная лента,
собственность стилиста.

KAREN COLLINS

Ben Watts

www.art-dept.com

Art Department



PHOTOGRAPHY ELLEN VON UNWERTH
*studio editor Christopher Nugent,
hair Denis Lami for Bumble and Bumble,
make-up Deva Kinnery at Art Department,
model Kianine © Elite, production Art + Commerce*

*Vintage dress by YVES SAINT LAURENT;
velvet hat by ANOUSHKA*

in between **days**

Ben Watts

www.art-dept.com

Art Department



Ben Watts

www.art-dept.com

Art Department



Ben Watts

www.art-dept.com

Art Department



Ben Watts

www.art-dept.com

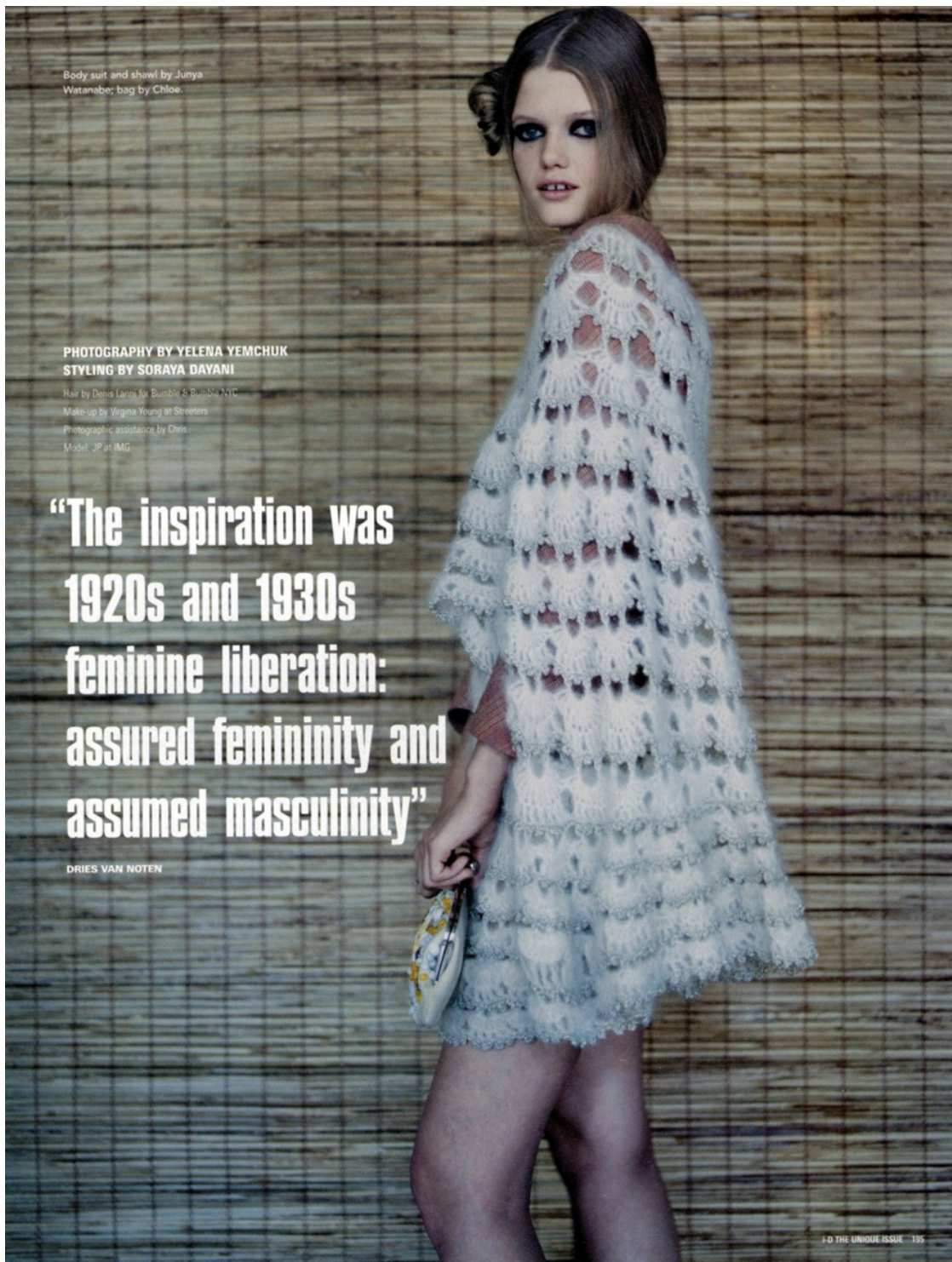
Art Department



Ben Watts

www.art-dept.com

Art Department



Body suit and shawl by Junya
Watanabe; bag by Chloe

PHOTOGRAPHY BY YELENA YEMCHUK
STYLING BY SORAYA DAYANI

Hair by Denis Larin for Bumble & Bumble NYC
Make-up by Virginia Young at Streeters
Photographic assistance by Chris
Model: JP at IMG

**“The inspiration was
1920s and 1930s
feminine liberation:
assured femininity and
assumed masculinity”**

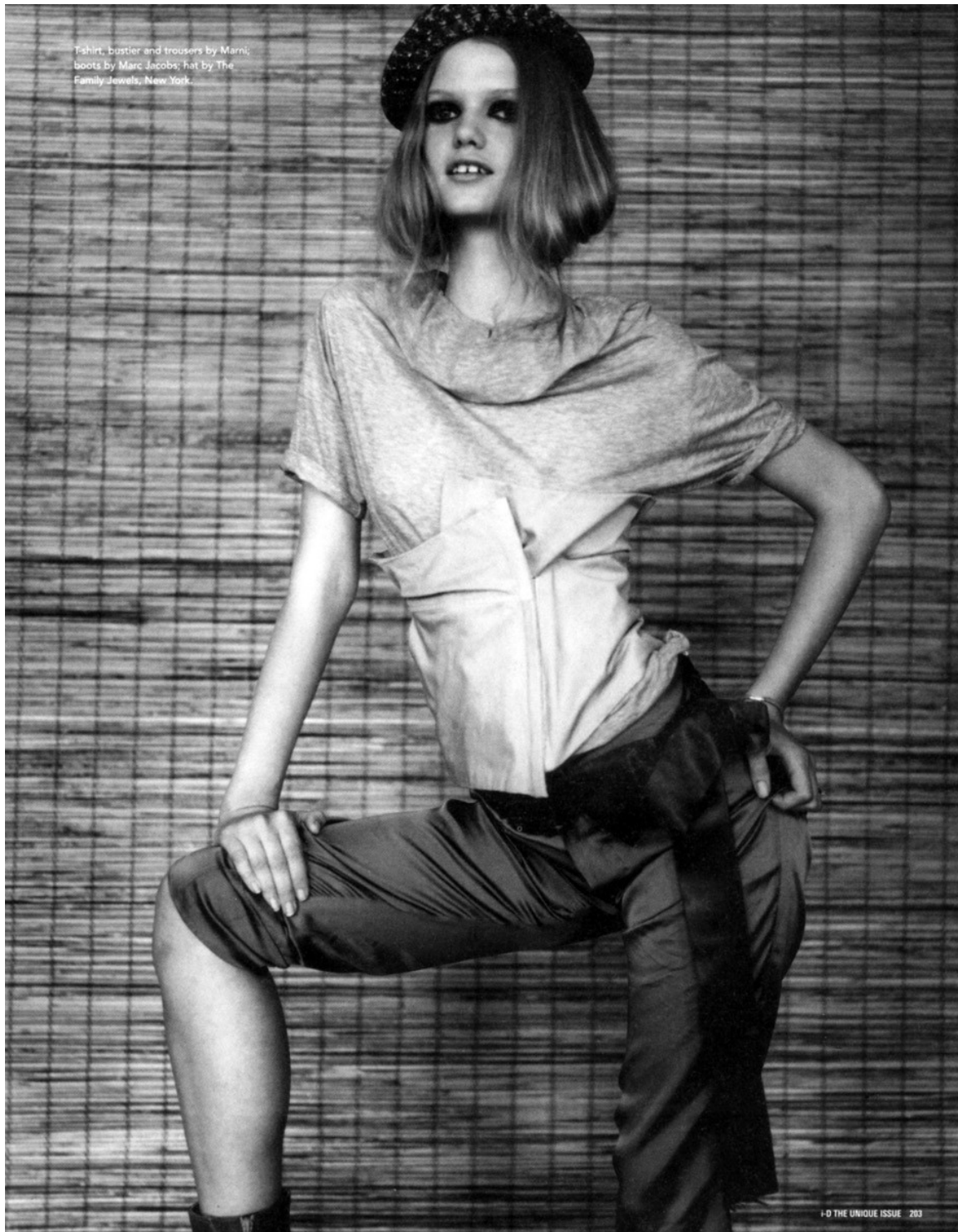
DRIES VAN NOTEN

F&D THE UNIQUE ISSUE 185

Ben Watts

www.art-dept.com

Art Department



Ben Watts

www.art-dept.com

Art Department

PHOTOGRAPHY TILDA VINCHON
Julia after breakfast in June
Julia after lunch in the Department, with up
Dora Kowal of Art Department, with Kowal
in 1911, photograph courtesy of
Sprayground, Julia across the night

By **BRADLEY** with
KAREN WALKER



guinevere

Ben Watts

www.art-dept.com

Art Department



Ben Watts

www.art-dept.com

Art Department



Ben Watts

www.art-dept.com

Art Department



あどけない誘い。
スカーフを身に纏ったようなグッチのトップ。ラグジュアリーなムードを漂わせるマリニルックを、木製のトグルがついたダッフル風セーターに合わせて、ちょっとカジュアルダウン。ボトムはミニのデニムスカートで元気よくまとめ、トップ ¥61,950 / GUCCI (グッチ ジャパン) セーター ¥31,500 / UNITED BAMBOO (ユニイテッドバンブー) デニムのミニスカート 参考商品 / WRANGLER (リー・ジャパン) イヤリング / FARAONE MENNELLA

My Denim Sweetheart

悩ましげなピンナップ・ガール。

スキニータイプのデニムが主流のシーズン。ひとくちにスキニーといっても、スタイリングでエレガントにもカジュアルにも変幻自在に遊べるのがデニムの魅力。テリー・リチャードソンによって、ノーマルな顔立ちのココがデニムスタイルのピンナップガールに大変化。

Photos: Terry Richardson
Fashion Editor: Mel Ottenberg

Vogue Japan 210

Ben Watts

www.art-dept.com

Art Department



大人のエレガンス。

オーストラリアのデザインユニット・ツピのスキニーデニム。ほどよいフィット感と独特のスタイル力。そしてちょっとした遊び心でモデルたちにも人気。トップには、エレガントなシャツを合わせ、洗練された大人の着こなしを。シャツ ¥16,800 / PAUL SMITH BLACK (ポール・スミス ジャパン) ジーンズ 参考商品 / TSUBI (フットーントーキー) イヤリング ¥367,500 / BVLGARI (ブルガリ ジャパン) プレスレット、ネックレス/ともにスタイリスト私物

211 Vogue Nippon

Ben Watts

www.art-dept.com

Art Department



Ben Watts

www.art-dept.com

Art Department



Ben Watts

www.art-dept.com

Art Department



Ben Watts

www.art-dept.com

Art Department



The Private Case

Terry Richardson & Richard Prince

Seth Goldfarb, Keichi and Alex, *photographer's assistants*
Nicolas Klam, *stylist* — Chelsea Gombes and Meghan Folsom, *stylist assistants*
Dennis Lanni, *hair* — Kemp Muhl (FORD), Sarabeth and Jessica Muhl, *models*

THEIR FIRST COLLABORATION TOGETHER, Richard Prince, exploder of subconscious American desire, and Terry Richardson, its archetypal photographer, co-signed an original fashion shoot for *Purple Fashion*, borrowing the title from a pornography collection housed in the British Library in London, which is inaccessible to the public.

*From left to right: Black cotton dress
CHLOÉ. Sheer ivory panties AGENT
PROVOCATEUR*

Ben Watts

www.art-dept.com

Art Department



Ben Watts

www.art-dept.com

Art Department



Ben Watts

www.art-dept.com

Art Department



Ben Watts

www.art-dept.com

Art Department



Ben Watts

www.art-dept.com

Art Department



balloon skirt

Wool sweater (\$145) and tweed skirt
(\$335), both by Max Mara

Ben Watts

www.art-dept.com

Art Department



Ben Watts

www.art-dept.com

Art Department



Ben Watts

www.art-dept.com

Art Department



ROBE EN TULLE VIOLET REBRODÉ DE SEQUINS ANNA SUI;
PULL LILAS EN LUREX RAYÉ ANOUSCHKA;
COLLANT NOIR FDGAL; SANDALES
DORÉES A.P.C. À GAUCHE; TOP
REBRODÉ DE PAILLETES À MANCHES
EN MOUSSELINE BLUMARINE.
■ ASSISTANTE-STYLISTE: FELICIA.
MANNEQUINS: LUCCA@I.M.G.
ET TELL@BANANAS. COIFFURE: DENNIS
LANNI@ART DEPARTMENT.
MAQUILLAGE: MARIEL BARRERA
FOR JOE. REMERCIEMENTS À
ANITA LEE BITTON@THE ESTABLISHMENT
ET NICOLE@SUN STUDIOS N.Y.

Ben Watts

www.art-dept.com

Art Department



Ben Watts

www.art-dept.com

Art Department



Ben Watts

www.art-dept.com

Art Department



Ben Watts

www.art-dept.com

Art Department



Ben Watts

www.art-dept.com

Art Department



Ben Watts

www.art-dept.com

Art Department



Ben Watts

www.art-dept.com

Art Department



コンサバがセクシー。

タイトなブルーオーバーに膝丈のペンシルスカートで、今シーズンのセクシーを体現。半袖のブルーオーバー ¥102,900。チェックのペンシルスカート ¥71,400 / ともに CELINE (セリーヌ ジャパン) エオメルのバンプス [JO] ¥88,200 / HERMES (エルメス ジャパン) 18K ホワイトゴールドドレスウォッチ ¥782,280 SIL プレスレット ¥26,775 / ともに TIFFANY & CO. (ティファニー・アンド・カンパニー・ジャパン・インク)

© Ben Watts 118

Ben Watts

www.art-dept.com

Art Department



Ben Watts

www.art-dept.com

Art Department



Ben Watts

www.art-dept.com

Art Department



Ben Watts

www.art-dept.com

Art Department



Ben Watts

www.art-dept.com

Art Department



Ben Watts

www.art-dept.com

Art Department



Ben Watts

www.art-dept.com

Art Department



>> *escocés*

Marc Jacobs para Louis
Vuitton decide y los
cuadros tartán se convierten
en una gran tendencia

LA MONTAÑA COMO INSPIRACIÓN

Chaqueta corta de
franela escocesa con
cuello de tafeta (1.300 €);
falda abullonada de
tafeta escocesa con
detalle de lazo de
terciopelo (1.000 €), todo
de Louis Vuitton. En la
otra página, chaqueta
de lana (1.085 €); chaleco
blanco de nylon y piel
de mongolia con capucha
(1.940 €); vestido blanco
sin mangas con falda-
globo de nylon (1.560 €);
botas de cuero con
forro de piel y tacón
cuña (1.085 €), todo
de Nicolas Ghesquière
para Balenciaga.

Ben Watts

www.art-dept.com

Art Department



PICCOLA GIACCA IN COTONE
A NIDO, DIAPE, SU SHORTS
CON SPACCHETTI LATERALI E
PAPILLON, VALENTINO ROMA.
CAMICIA IN POPELINE,
VALENTINO. CAPPELLO LOLA
HATS. SANDALI IN PELLE CON
NODO-DECORO, GIVENCHY.

Ben Watts

www.art-dept.com

Art Department



LUNGA GIACCA DI MARABU,
ROSSELLA TARABINI
PER ANNA MOLINARI: TUTA
IN MUSSOLINA DE SETA
CHIUSA DA ZIP, MAX MARA.
CINTURA YSL RIVE GAUCHE.

Ben Watts

www.art-dept.com

Art Department



Ben Watts

www.art-dept.com

Art Department



Ben Watts

www.art-dept.com

Art Department



Photography Terry Richardson
Styling Leslie Lessin

Makeup Devra Kinery (Frame)
Hair Dennis Lanni (Bumble and bumble)
Photo assistants Seth Goldfarb and Keichi Nitta
Stylist assistant Lauri Eisenberg
Model Susan Eldridge (Elite)

Shorts and suspenders Chloé (www.chloe.com)
Watch Van Cleef & Arpels
Necklace Cartier (www.cartier.com)
Boots Frye for Anna Sui (212.941.8406)

Ben Watts

www.art-dept.com

Art Department



Ben Watts

www.art-dept.com

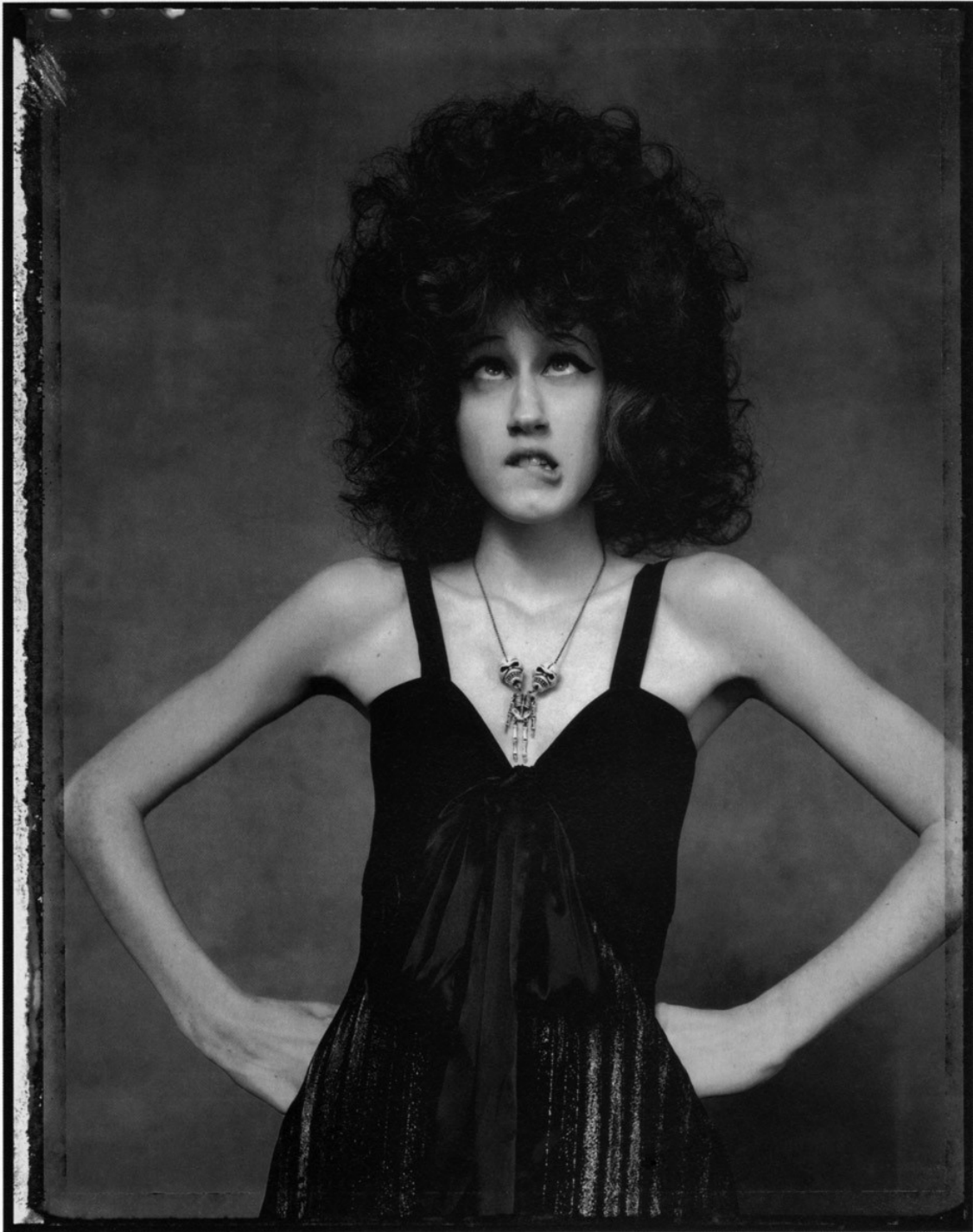
Art Department



Ben Watts

www.art-dept.com

Art Department



Ben Watts

www.art-dept.com

Art Department



Ben Watts

www.art-dept.com

Art Department



Ben Watts

www.art-dept.com