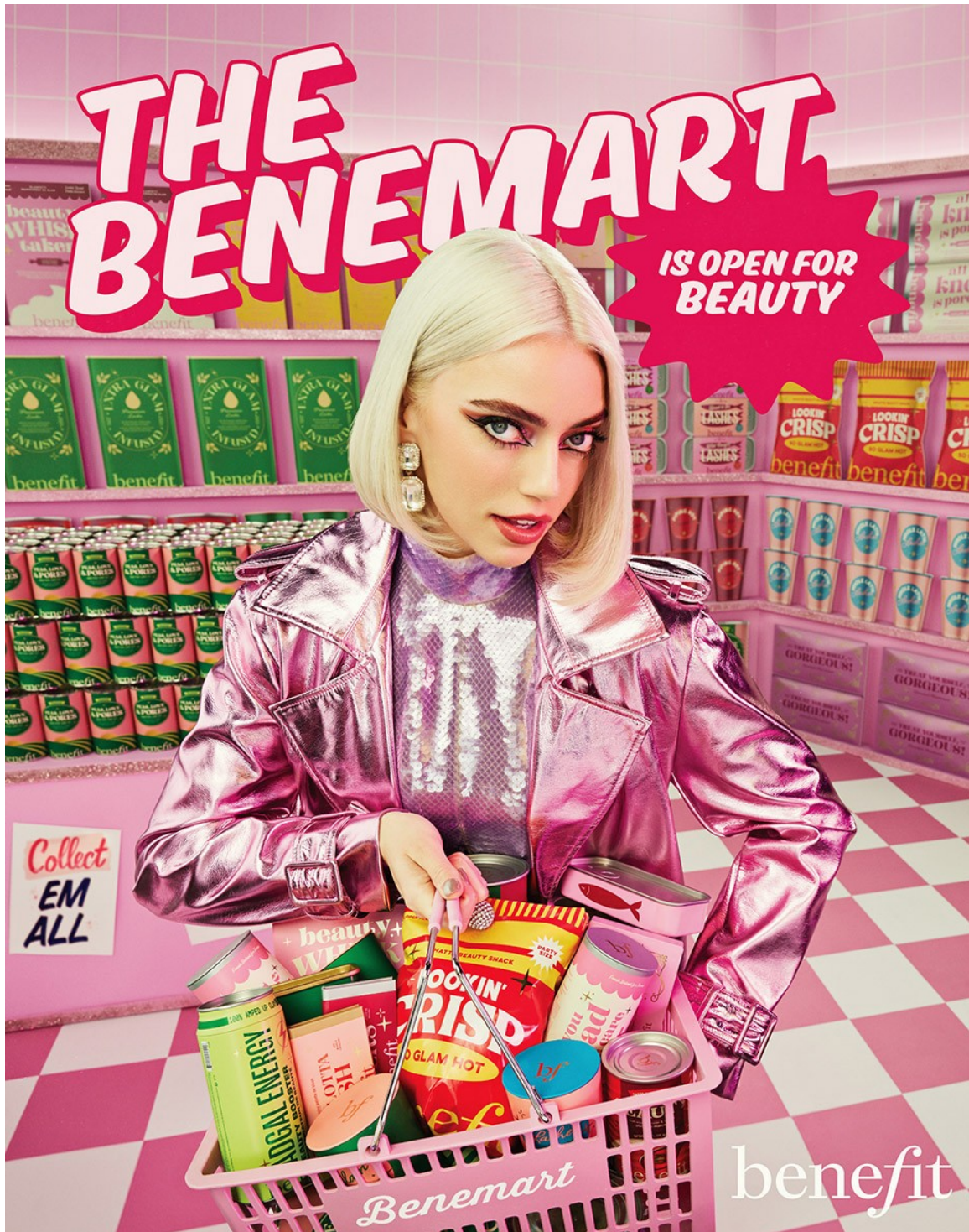


Art Department



Julia Johnson

www.art-dept.com

Art Department



Julia Johnson

www.art-dept.com

Art Department



Julia Johnson

www.art-dept.com

Art Department



Julia Johnson

www.art-dept.com

Art Department

Run our ads -
reach new customers

Talk about pattern that's always in style.



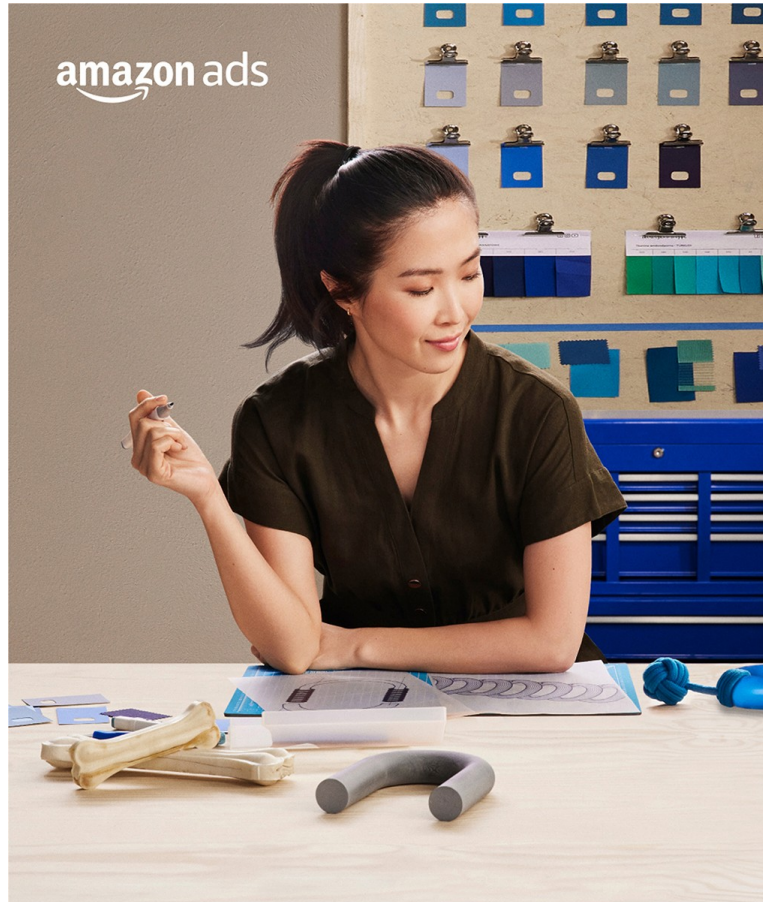
The image is a vertical advertisement for Amazon Ads. It features a dark, chalkboard-like background at the top with white text. Below the text is a photograph of a man in a red jacket sitting at a wooden desk, operating a sewing machine. On the desk are various sewing supplies like spools of thread and fabric pieces. In the foreground, a man in a white t-shirt and brown pants is holding up a green jacket with orange and blue patches. The background of the photo is a well-lit closet with various clothes hanging on a rack and wooden drawers. The Amazon Ads logo is in the bottom right corner of the image.

amazon ads

Julia Johnson

www.art-dept.com

Art Department



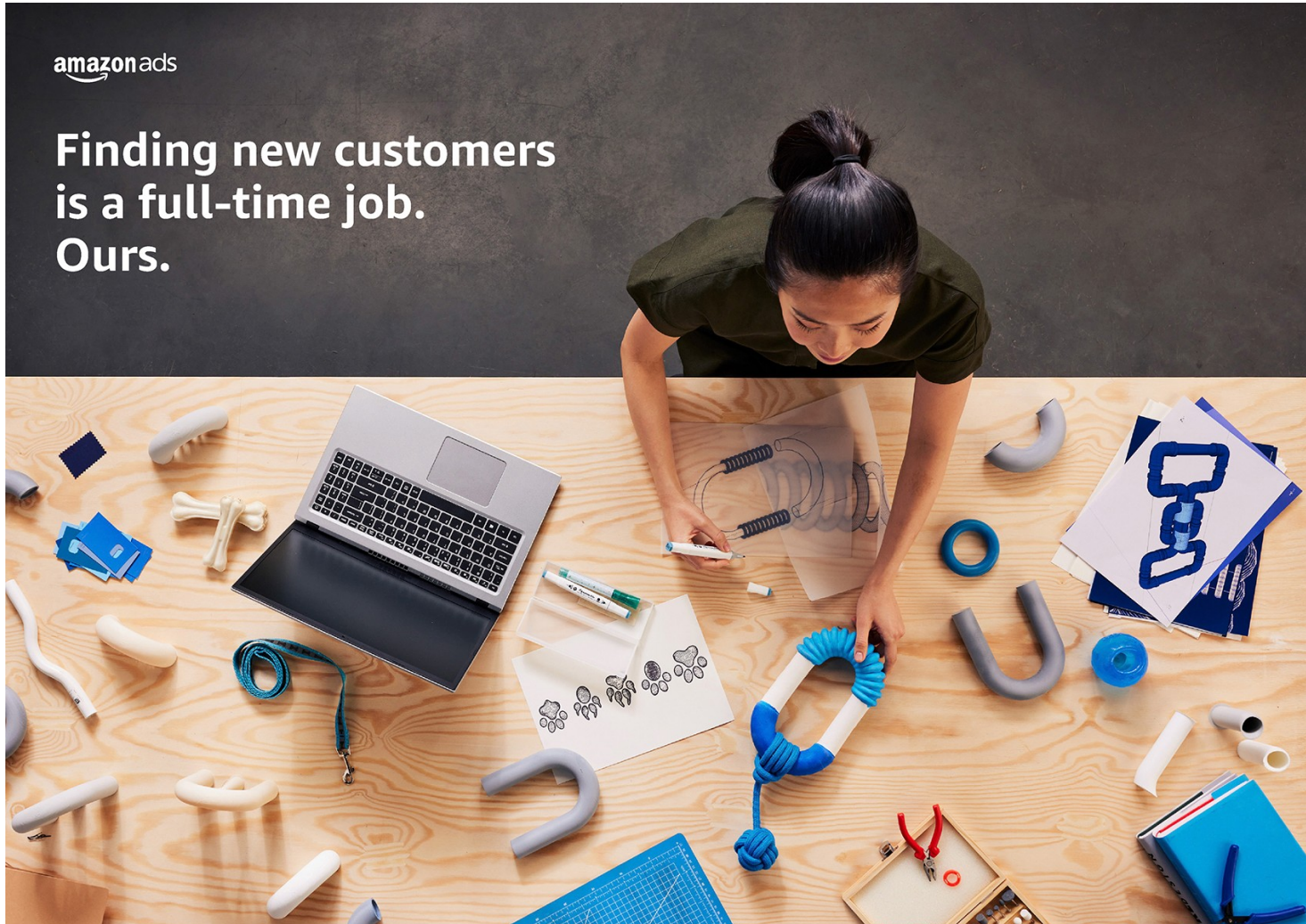
Julia Johnson

www.art-dept.com

Art Department

amazon ads

Finding new customers
is a full-time job.
Ours.



Julia Johnson

www.art-dept.com

Art Department



Julia Johnson

www.art-dept.com

Art Department



Julia Johnson

www.art-dept.com

Art Department



Julia Johnson

www.art-dept.com

Art Department



Julia Johnson

www.art-dept.com

Art Department



Julia Johnson

www.art-dept.com

Art Department



Julia Johnson

www.art-dept.com

Art Department



Julia Johnson

www.art-dept.com

Art Department



Julia Johnson

www.art-dept.com

Art Department



Julia Johnson

www.art-dept.com

Art Department



Julia Johnson

www.art-dept.com

Art Department



Julia Johnson

www.art-dept.com

Art Department



Julia Johnson

www.art-dept.com

Art Department



Julia Johnson

www.art-dept.com

Art Department



Julia Johnson

www.art-dept.com

Art Department



Julia Johnson

www.art-dept.com

Art Department



Julia Johnson

www.art-dept.com

Art Department



Julia Johnson

www.art-dept.com

Art Department



Julia Johnson

www.art-dept.com

Art Department



Julia Johnson

www.art-dept.com

Art Department



Julia Johnson

www.art-dept.com

Art Department



Julia Johnson

www.art-dept.com

Art Department



Julia Johnson

www.art-dept.com

Art Department



Julia Johnson

www.art-dept.com

Art Department



Julia Johnson

www.art-dept.com

Art Department



Julia Johnson

www.art-dept.com

Art Department



Julia Johnson

Art Department



Julia Johnson

www.art-dept.com

Art Department



benefit

NEW!

benefit

MAKE A SPLASH

MOST LIKELY TO MAKE A SPLASH

Meet Splashtint, a moisturizing dewy lip tint

The advertisement features a young woman with long, wavy, reddish-brown hair and bangs, smiling broadly. She is wearing a light blue varsity jacket with white stripes on the collar and a circular patch on the chest that says "MAKE A SPLASH". In the bottom left corner, there is a white bottle of Benefit Splashtint lip tint with a red applicator. A pink starburst graphic with the word "NEW!" is positioned above the bottle. The background of the photo is a solid light blue color.

Julia Johnson

www.art-dept.com

Art Department



benefit

NEW!

PRESIDENT OF THE PLUSH CLUB
Meet Plushtint, a moisturizing matte lip tint

The advertisement features a woman with long, wavy, reddish-brown hair and blue eyes, wearing a pink and white varsity jacket with a large pink letter 'P' on the chest. She is looking directly at the camera with a slight smile. In the bottom left corner, there is a product shot of the Benefit Plushtint lip tint, which is a white, rounded tube with a black applicator. A red starburst graphic with the word 'NEW!' is positioned above the product. The background of the woman's portrait is a light blue sky, and the entire advertisement is set against a light beige background.

Julia Johnson

www.art-dept.com

Art Department

TINTS: THE NEW CLASS
Moisturizing lip tints. Go dewy or get matte.

The advertisement features two models in a school-themed setting with green lockers. The model on the left wears a light blue varsity jacket with a large blue 'S' on the chest, a yellow 'SPLASH' patch, and a yellow horse patch. The model on the right wears a pink V-neck sweater with a large red 'P' on the chest, a tiger face patch, and a blue shield patch that says 'Plush Club'. In the bottom left corner, a pink starburst graphic contains two lip tint tubes and a brush, with the text 'Splashtint & Plushtint'. The 'benefit' logo is in the bottom right corner.

Julia Johnson

www.art-dept.com

Art Department



Julia Johnson

www.art-dept.com

Art Department



Julia Johnson

www.art-dept.com

Art Department



Julia Johnson

www.art-dept.com

Art Department



Julia Johnson

www.art-dept.com

Art Department



Julia Johnson

www.art-dept.com

Art Department



Julia Johnson

www.art-dept.com

Art Department



Julia Johnson

www.art-dept.com

Art Department



Julia Johnson

www.art-dept.com

Art Department



Julia Johnson

www.art-dept.com

Art Department



Julia Johnson

www.art-dept.com

Art Department



Julia Johnson

www.art-dept.com

Art Department



Julia Johnson

www.art-dept.com

Art Department



Julia Johnson

www.art-dept.com

Art Department



MOROCCANOIL.®

MOROCCANOIL.COM
Luxury Salons & Spas, Bluemercury, Nordstrom-Saks Fifth Avenue, Sephora

A WORLD OF OIL-INFUSED BEAUTY

MOROCCANOIL
MOROCCANOIL TREATMENT
NUTRIENT
MOROCCANOIL
For All Hair Types
Light
Moroccan Argan Oil

MOROCCANOIL
MOROCCANOIL TREATMENT
NUTRIENT
MOROCCANOIL
For All Hair Types
Light
Moroccan Argan Oil

Julia Johnson

www.art-dept.com

Art Department



Julia Johnson

www.art-dept.com

Art Department



Julia Johnson

www.art-dept.com

Art Department



Julia Johnson

www.art-dept.com

Art Department



Julia Johnson

www.art-dept.com

Art Department



Julia Johnson

www.art-dept.com

Art Department



Julia Johnson

www.art-dept.com

Art Department



Julia Johnson

www.art-dept.com

Art Department



Fluff Yeah!

benefit
SAN FRANCISCO

benefit
FLUFF UP BROW WAX

GET FLUFFY,
FLEXIBLE BROWS

The advertisement features a close-up portrait of a woman with her face framed by a thick layer of vibrant pink feathers. She has a soft, pleasant expression. The text 'Fluff Yeah!' is prominently displayed in a large, white, serif font across the top of her face. In the bottom right corner, the Benefit 'Fluff Up Brow Wax' product is shown, consisting of a silver tube and a separate applicator wand. The Benefit logo and 'SAN FRANCISCO' are visible in the bottom left corner of the image area. The product name 'benefit FLUFF UP BROW WAX' is printed on the tube. Below the product, the slogan 'GET FLUFFY, FLEXIBLE BROWS' is written in a bold, white, sans-serif font.

Julia Johnson

www.art-dept.com

Art Department



Julia Johnson

www.art-dept.com

Art Department



Julia Johnson

www.art-dept.com

Art Department



Julia Johnson

www.art-dept.com

Art Department



Julia Johnson

www.art-dept.com

Art Department



Julia Johnson

www.art-dept.com

Art Department



Julia Johnson

www.art-dept.com

Art Department



Julia Johnson

www.art-dept.com

Art Department



Julia Johnson

www.art-dept.com

Art Department



Julia Johnson

www.art-dept.com

Art Department



Julia Johnson

www.art-dept.com

Art Department



Julia Johnson

www.art-dept.com

Art Department



Julia Johnson

www.art-dept.com

Art Department



Julia Johnson

www.art-dept.com

Art Department



Julia Johnson

Art Department



Julia Johnson

www.art-dept.com

Art Department



Julia Johnson

www.art-dept.com

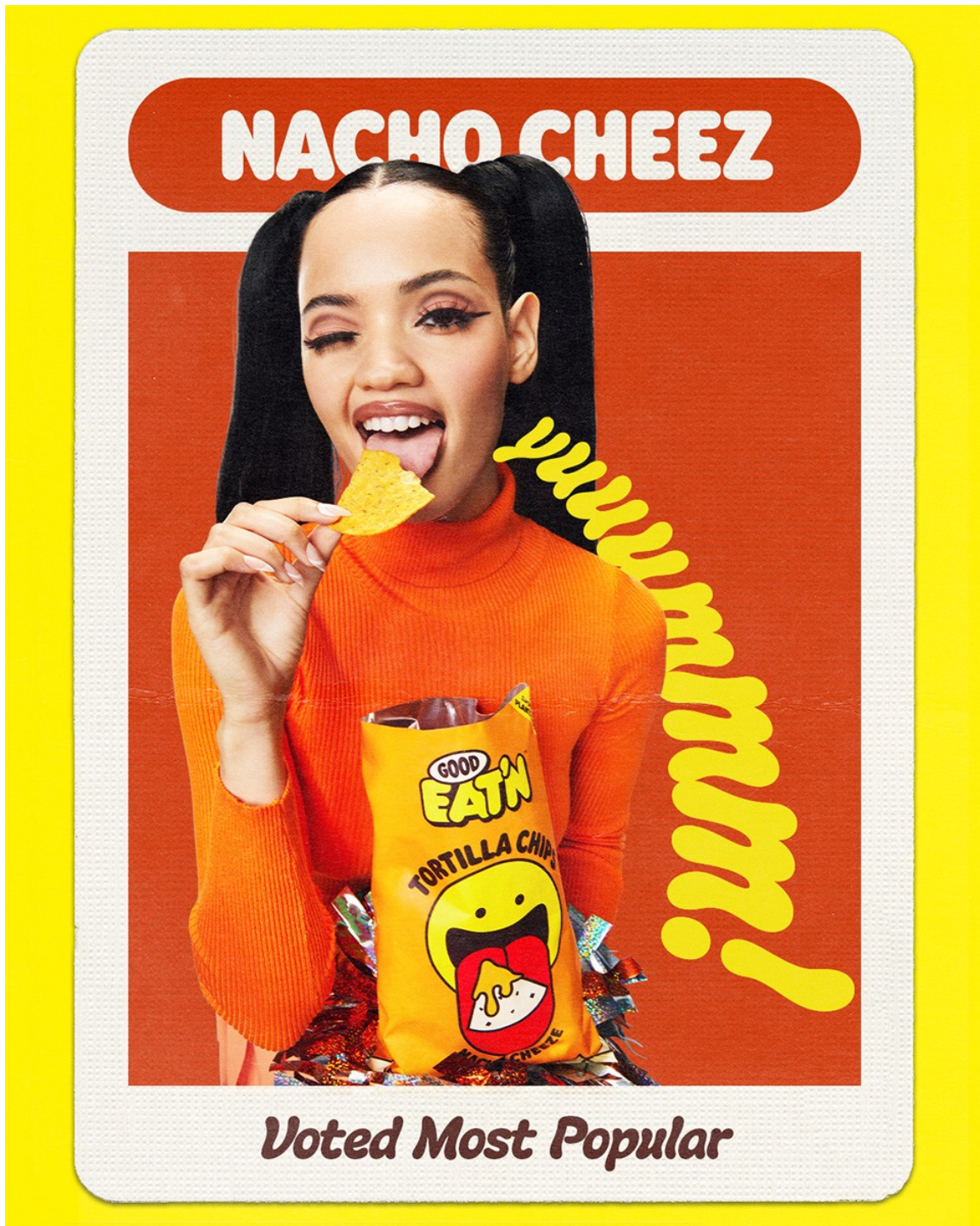
Art Department



Julia Johnson

www.art-dept.com

Art Department



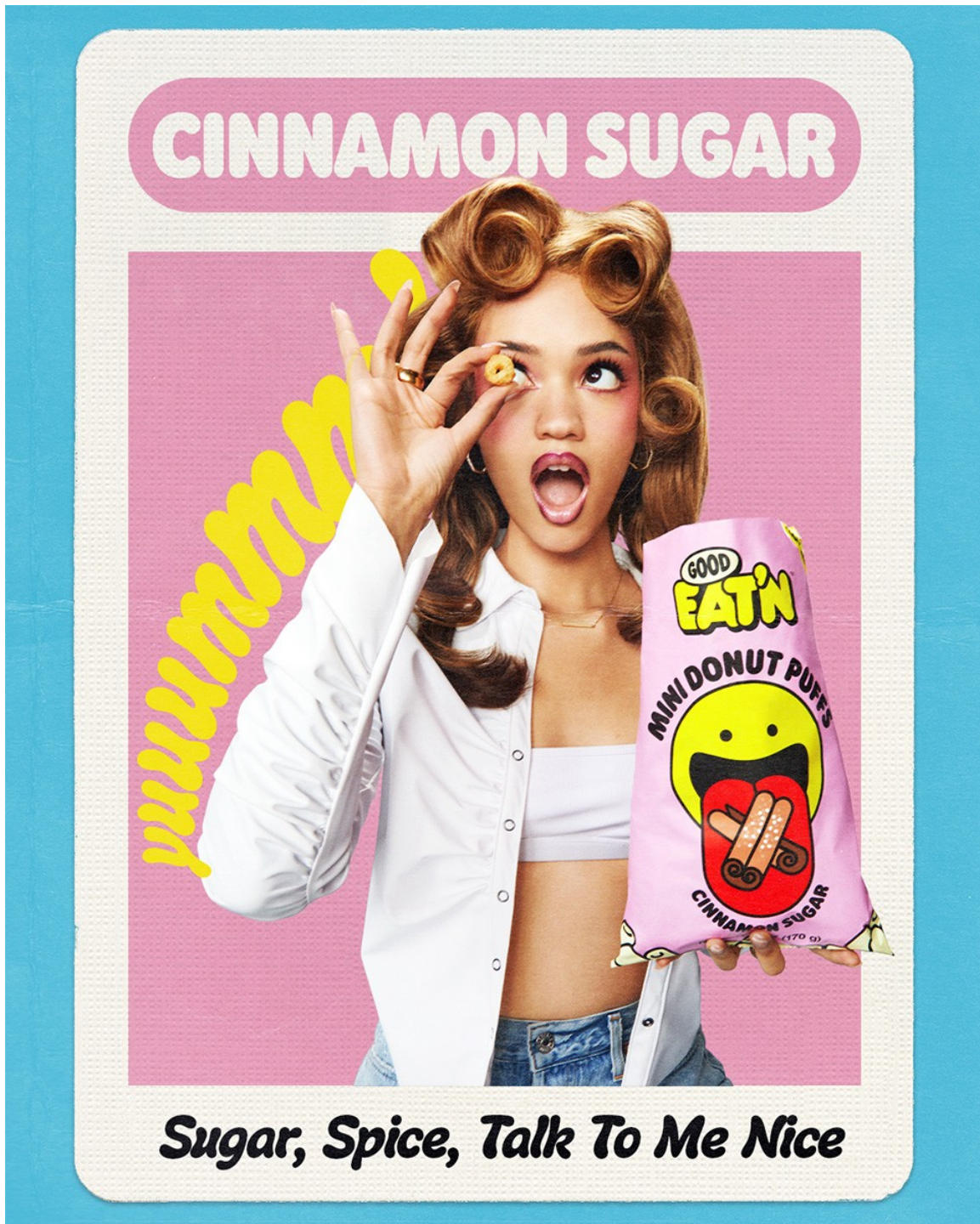
Julia Johnson

Art Department



Julia Johnson

Art Department



Julia Johnson

Art Department



Julia Johnson

Art Department



Julia Johnson

Art Department



Julia Johnson

www.art-dept.com

Art Department



Julia Johnson

www.art-dept.com

Art Department



Julia Johnson

www.art-dept.com

Art Department



Julia Johnson

www.art-dept.com

Art Department



Julia Johnson

www.art-dept.com

Art Department



Julia Johnson

www.art-dept.com

Art Department



Julia Johnson

www.art-dept.com

Art Department



Julia Johnson

www.art-dept.com

Art Department



Julia Johnson

www.art-dept.com

Art Department



Julia Johnson

www.art-dept.com

Art Department



Julia Johnson

www.art-dept.com

Art Department



Julia Johnson

www.art-dept.com

Art Department



Julia Johnson

www.art-dept.com

Art Department



Julia Johnson

www.art-dept.com

Art Department



Julia Johnson

www.art-dept.com

Art Department



Julia Johnson

www.art-dept.com

Art Department



Julia Johnson

www.art-dept.com

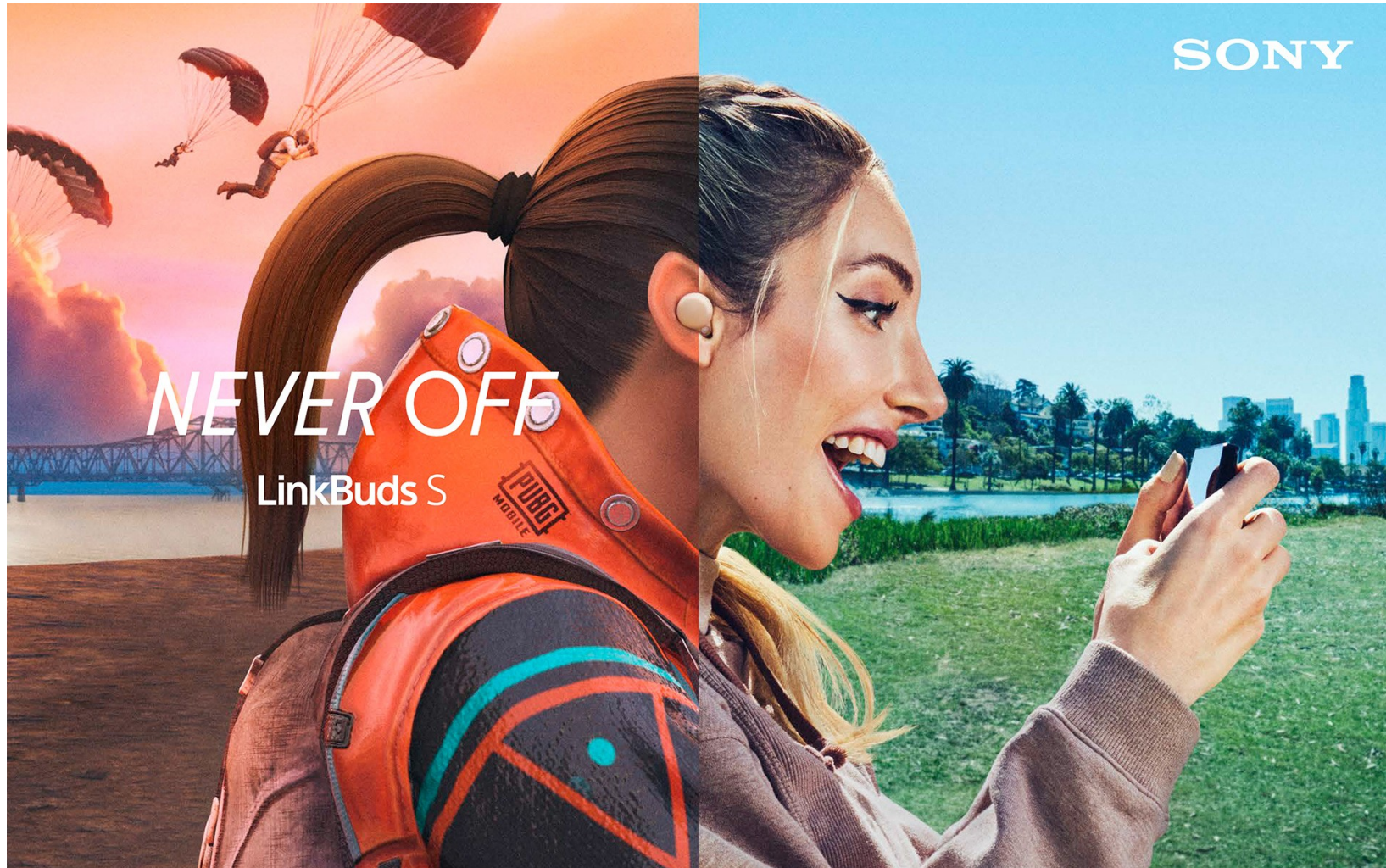
Art Department



Julia Johnson

www.art-dept.com

Art Department



Julia Johnson

www.art-dept.com

Art Department



Julia Johnson

www.art-dept.com

Art Department



Julia Johnson

www.art-dept.com

Art Department



Julia Johnson

www.art-dept.com

Art Department



Julia Johnson

www.art-dept.com

Art Department



Julia Johnson

www.art-dept.com

Art Department



Julia Johnson

www.art-dept.com

Art Department



Julia Johnson

www.art-dept.com

Art Department



Julia Johnson

www.art-dept.com

Art Department



Julia Johnson

www.art-dept.com

Art Department



Julia Johnson

www.art-dept.com

Art Department



Julia Johnson

www.art-dept.com

Art Department



Julia Johnson

www.art-dept.com

Art Department



Julia Johnson

www.art-dept.com

Art Department



Julia Johnson

www.art-dept.com

Art Department



Julia Johnson

www.art-dept.com

Art Department



Julia Johnson

www.art-dept.com

Art Department



Julia Johnson

www.art-dept.com

Art Department



Julia Johnson

www.art-dept.com

Art Department



Julia Johnson

www.art-dept.com

Art Department

motorola

Lenovo

snap a
360° camera
on your moto z2™

hello360°

Motomods™ sold separately. Motorola Mobility LLC, A Lenovo Company.

Julia Johnson

www.art-dept.com

Art Department



Julia Johnson

www.art-dept.com

Art Department



Julia Johnson

www.art-dept.com

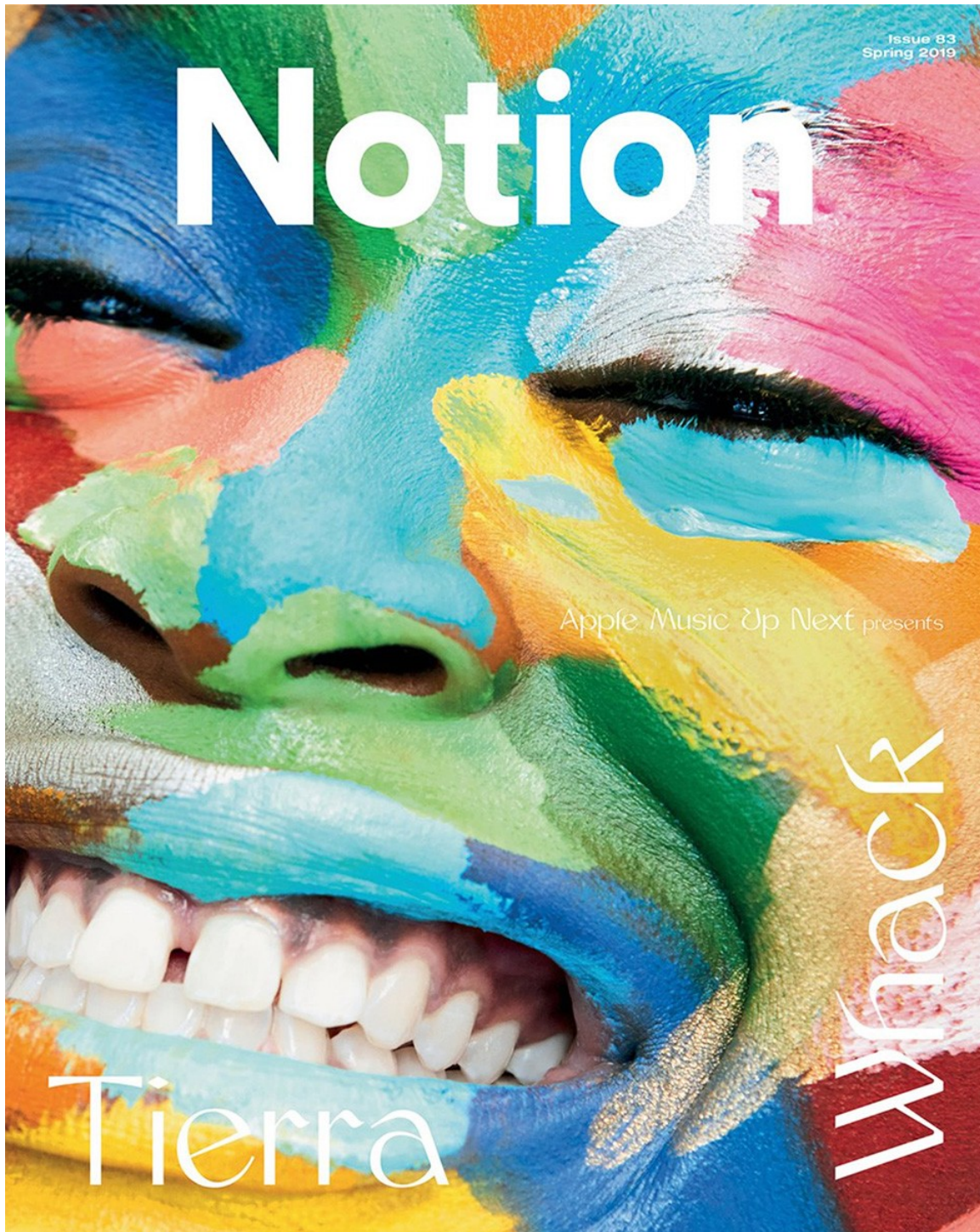
Art Department



Julia Johnson

www.art-dept.com

Art Department



Julia Johnson

www.art-dept.com

Art Department



Julia Johnson

www.art-dept.com

Art Department

motorola

Lenovo

snap a speaker
on your moto z2™

hellodisco

Motomods™ sold separately. Motorola Mobility LLC, a Lenovo Company.

Julia Johnson

www.art-dept.com

Art Department



Julia Johnson

www.art-dept.com

Art Department



Julia Johnson

www.art-dept.com

Art Department



Julia Johnson

www.art-dept.com

Art Department



Julia Johnson

www.art-dept.com

Art Department



Julia Johnson

www.art-dept.com

Art Department



Julia Johnson

www.art-dept.com

Art Department



Julia Johnson

www.art-dept.com

Art Department

You launched a
marketing campaign!
Now what?

See what's working
with the All-in-One
Marketing Platform.
That's what.



All-in-One Marketing Platform

CRM | ADS | EMAIL | SOCIAL | ANALYTICS



Julia Johnson

www.art-dept.com

Art Department



Julia Johnson

www.art-dept.com

Art Department

motorola

Lenovo

snap a
gamepad
on your moto z2™

hello gamers

Motorola™ sold separately. Motorola Mobility LLC, A Lenovo Company.

Julia Johnson

www.art-dept.com

Art Department

GODIVA *is* **CHOCOLATE**



GODIVA *is* CHOCOLATE



Julia Johnson

Art Department



Julia Johnson

www.art-dept.com

Art Department



Julia Johnson

www.art-dept.com

Art Department



Julia Johnson

www.art-dept.com

Art Department



Julia Johnson

www.art-dept.com

Art Department



Julia Johnson

www.art-dept.com

Art Department

HEALTH-ADE
KOMBUCHA

**ALL REAL,
THAT'S THE TEA.**

© 2019 Health-Ade, LLC

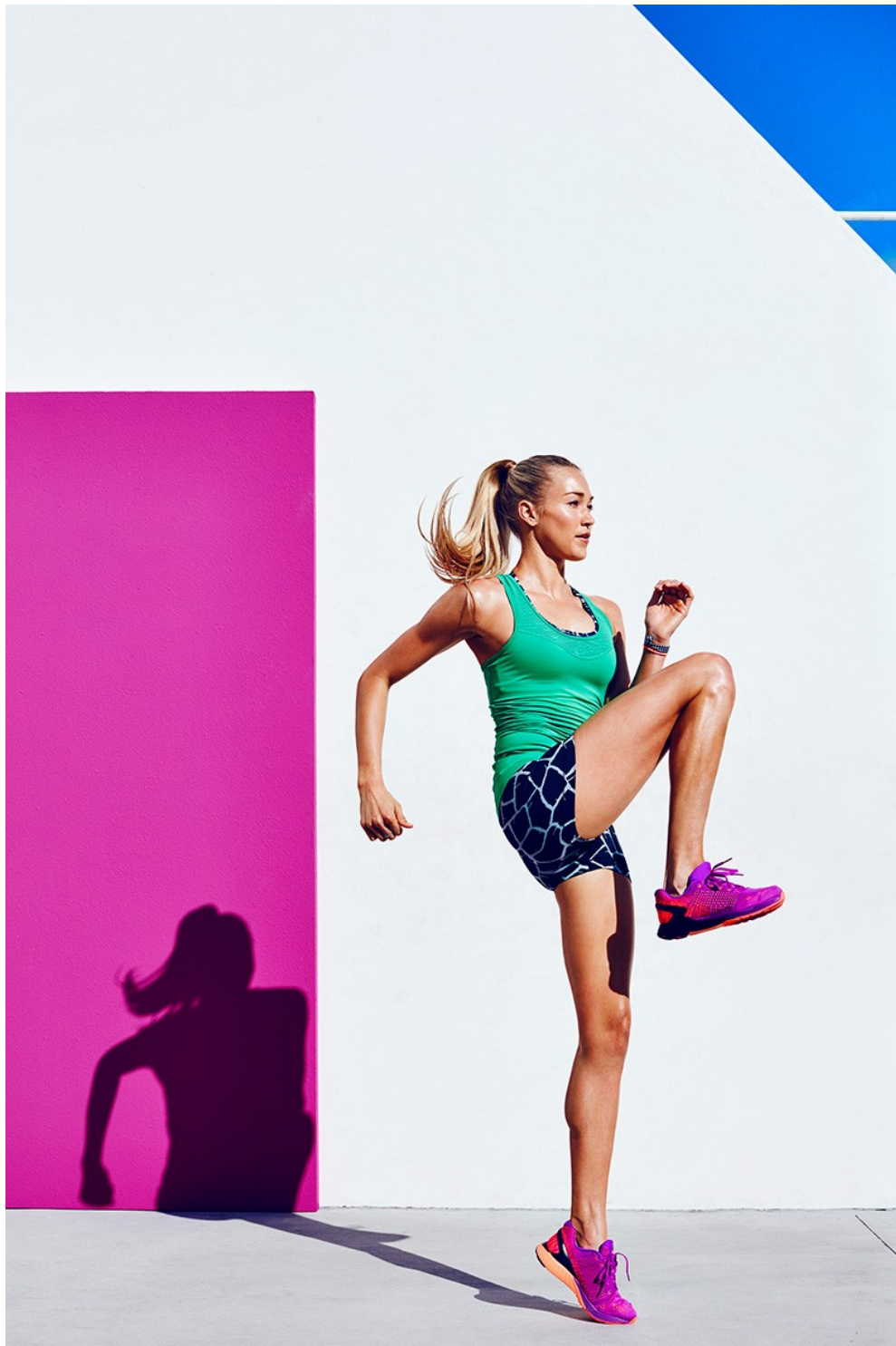
**HEALTH-ADE
KOMBUCHA**
a bubbly probiotic tea
POMEGRANATE
6.5 FL OZ (191 mL)

FOLLOW YOUR GUT. [@healthade](https://www.healthade.com)

Julia Johnson

www.art-dept.com

Art Department



Julia Johnson

www.art-dept.com

Art Department



Julia Johnson

www.art-dept.com

Art Department



Julia Johnson

www.art-dept.com

Art Department



Julia Johnson

www.art-dept.com

Art Department



#NailChamp

Julia Johnson

www.art-dept.com

Art Department



Julia Johnson

www.art-dept.com

Art Department



Julia Johnson

www.art-dept.com

Art Department



Julia Johnson

www.art-dept.com

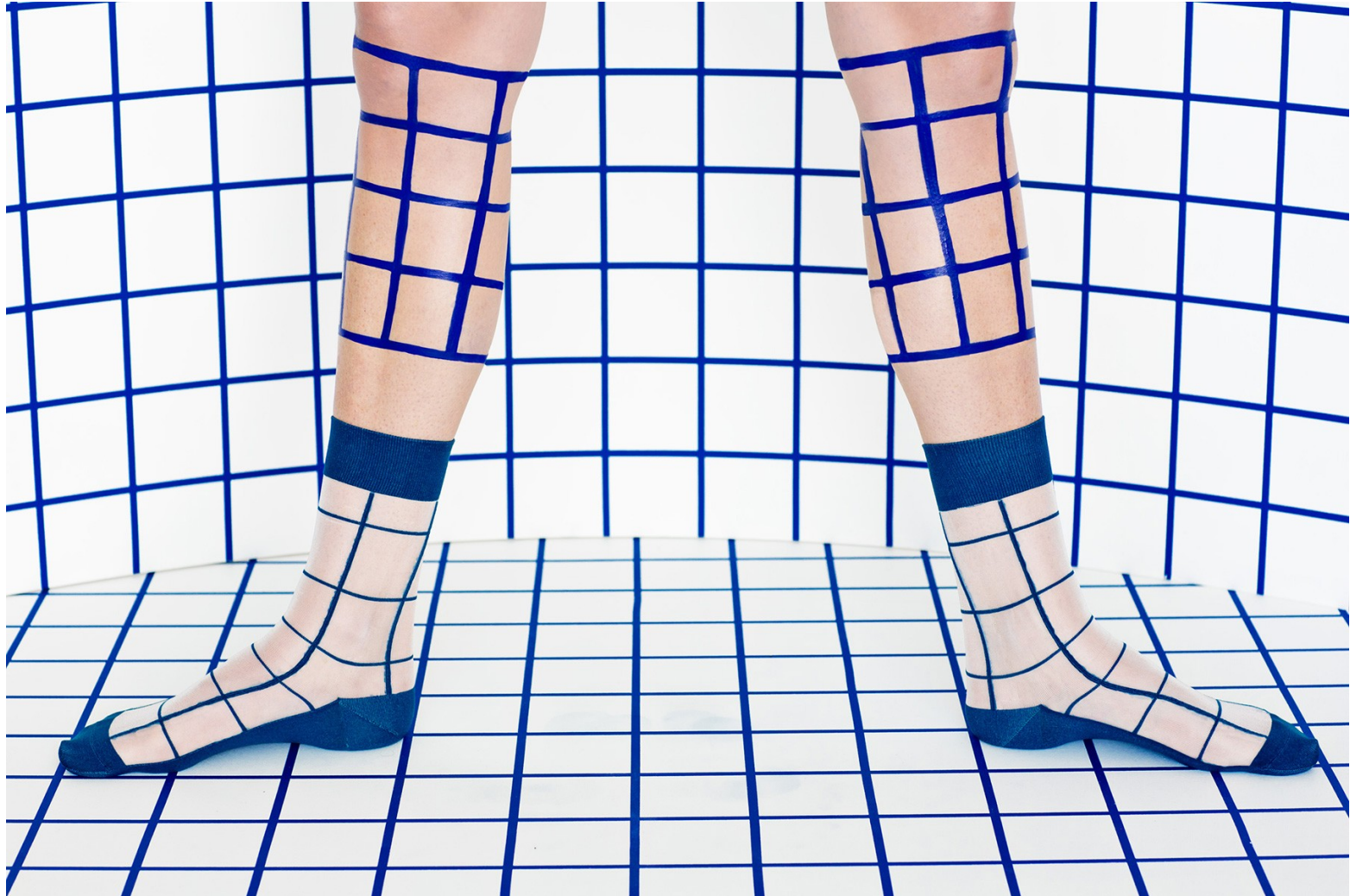
Art Department



Julia Johnson

www.art-dept.com

Art Department



Julia Johnson

www.art-dept.com

Art Department



Julia Johnson

www.art-dept.com

Art Department



Julia Johnson

www.art-dept.com

Art Department



Julia Johnson

www.art-dept.com

Art Department



Julia Johnson

www.art-dept.com

Art Department



Julia Johnson

www.art-dept.com

Art Department



Julia Johnson

www.art-dept.com

Art Department



Julia Johnson

www.art-dept.com

Art Department



The advertisement features a woman in a blue swimsuit lying on a lounge chair, holding a Motorola Moto Z2 smartphone. A bright blue beam of light projects from the phone's screen, creating a large, semi-transparent image of a man and a woman in a swimming pool. The man is wearing striped shorts and the woman is in a white swimsuit, both holding a large, clear inflatable ring. The background is a dark blue gradient. In the top left corner is the Motorola logo. In the bottom right corner, there is a vertical 'Lenovo' logo. At the bottom, the text 'snap a projector on your moto z2™' is displayed above the 'hellomovie' logo. A close-up of the phone's back is shown in the bottom right, highlighting the camera lens and the Motorola logo.

motorola

Lenovo

snap a projector
on your moto z2™

hellomovie

Motomods™ sold separately. Motorola Mobility LLC, A Lenovo Company.

Julia Johnson

www.art-dept.com

Art Department



Julia Johnson

www.art-dept.com

Art Department



Julia Johnson

www.art-dept.com

Art Department



Julia Johnson

www.art-dept.com

Art Department

Abso-GLUTELY

**THE ONLY WATER WITH ENOUGH ELECTROLYTES
TO PUT BACK WHAT YOU LOSE IN SWEAT.***

propel ELECTROLYTE WATER

*Among national enhanced water brands.
PROPEL, G Design and GATORADE are registered trademarks of Siskel-Van Camp, Inc. ©2018 S-V-C, Inc.

Julia Johnson

www.art-dept.com

Art Department



Julia Johnson

www.art-dept.com

Art Department

© 2019 Health-Ade, LLC

HEALTH-ADE
KOMBUCHA

BIG MOOD.
SMALL BATCH.

FOLLOW YOUR GUT. [@healthade](https://www.instagram.com/healthade)

HEALTH-ADE
KOMBUCHA
a bubbly probiotic tea
GINGER-LEMON
16.9 FL OZ (483 mL)

Julia Johnson

www.art-dept.com

Art Department



Julia Johnson

www.art-dept.com

Art Department



Julia Johnson

www.art-dept.com

Art Department



Julia Johnson

www.art-dept.com

Art Department



Julia Johnson

www.art-dept.com

Art Department



Julia Johnson

www.art-dept.com

Art Department



Julia Johnson

www.art-dept.com

Art Department



SUMMER 2019
smagazineofficial.com

GIVE INTO SUMMER

INDULGENT TIMEPIECES
ADORNED HAIR
NEW STYLE RULES

ACROSS THE GLOBE

WOMEN IN DESIGN
MAGIC OF
MEXICO CITY
MODEST FASHION
REBORN

SHAILENE WOODLEY

A SIGHT TO BEHOLD

Julia Johnson

www.art-dept.com

Art Department



Julia Johnson

www.art-dept.com

Art Department



Julia Johnson

www.art-dept.com

Art Department



Julia Johnson

www.art-dept.com

Art Department



Julia Johnson

www.art-dept.com

Art Department



Julia Johnson

www.art-dept.com

Art Department



Julia Johnson

www.art-dept.com

Art Department



Julia Johnson

www.art-dept.com

Art Department



Julia Johnson

www.art-dept.com

Art Department



Julia Johnson

www.art-dept.com

Art Department



Julia Johnson

www.art-dept.com

Art Department



Julia Johnson

www.art-dept.com

Art Department



Julia Johnson

www.art-dept.com

Art Department



Julia Johnson

www.art-dept.com

Art Department



Julia Johnson

www.art-dept.com

Art Department



Julia Johnson

www.art-dept.com

Art Department



Julia Johnson

www.art-dept.com

Art Department



Julia Johnson

www.art-dept.com

Art Department



Julia Johnson

www.art-dept.com

Art Department



Julia Johnson

www.art-dept.com

Art Department



Julia Johnson

www.art-dept.com

Art Department



Julia Johnson

www.art-dept.com

Art Department



Julia Johnson

www.art-dept.com

Art Department



Julia Johnson

www.art-dept.com

Art Department



Julia Johnson

www.art-dept.com

Art Department



Julia Johnson

www.art-dept.com