

# Art Department



Kenneth Cappello

# Art Department



Kenneth Cappello

[www.art-dept.com](http://www.art-dept.com)



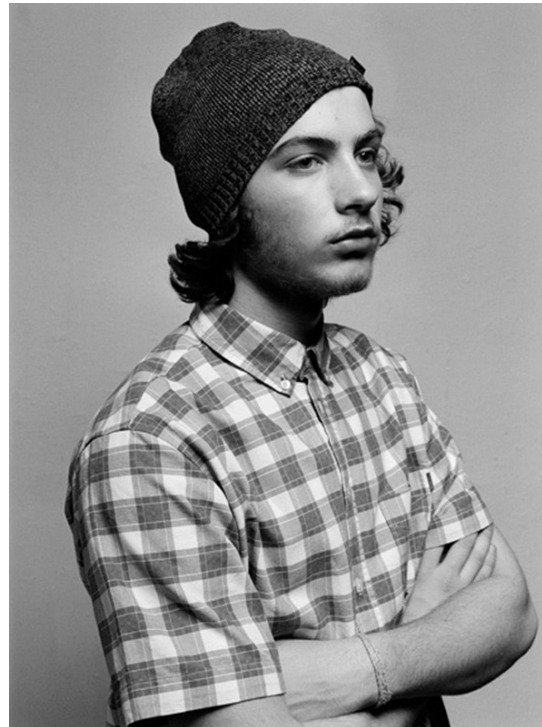
# Art Department



Kenneth Cappello

[www.art-dept.com](http://www.art-dept.com)

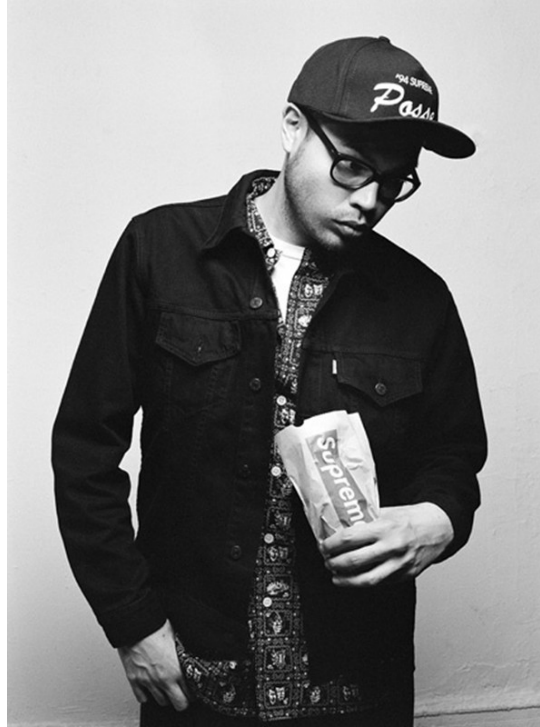
# Art Department



Kenneth Cappello

[www.art-dept.com](http://www.art-dept.com)

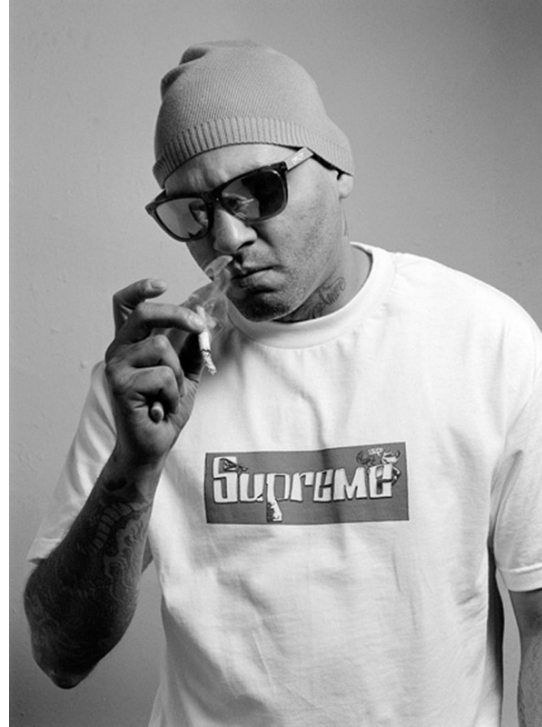
# Art Department



Kenneth Cappello

[www.art-dept.com](http://www.art-dept.com)

# Art Department



Kenneth Cappello

[www.art-dept.com](http://www.art-dept.com)

# Art Department



SUPREMEの2010年秋冬コレクション

NYを拠点に活躍するアーティストの  
ネイト・ローマンがセンティブに感じられた。  
Supremeの2010年秋冬コレクションは、  
今週、ニューヨークにて撮影された。  
スポットは最新カタログを撮影する。

photo: Kenneth Cappello / 2010年秋冬コレクション  
styling: Nate Lowman / 2010年秋冬コレクション  
location: Kenneth Cappello  
art: Kenneth Cappello  
hair: Kenneth Cappello



Kenneth Cappello

[www.art-dept.com](http://www.art-dept.com)



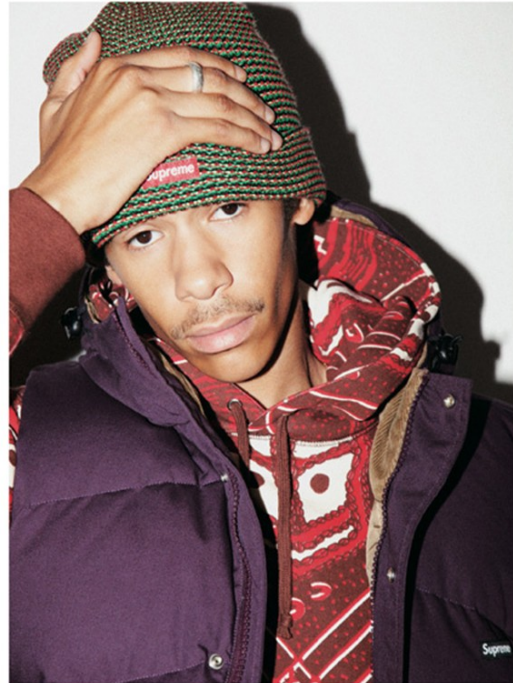
# Art Department



003 0001\_10000 Schott® Perfecto jacket / Gune Shirt



001 0001\_10000 Taped Seam Patch / Power, Corruption, Lies Pullover / Stone Washed Slim Jean



0001\_10000 003

## Kenneth Cappello

[www.art-dept.com](http://www.art-dept.com)

# Art Department



Kenneth Cappello

[www.art-dept.com](http://www.art-dept.com)

# Art Department



Kenneth Cappello

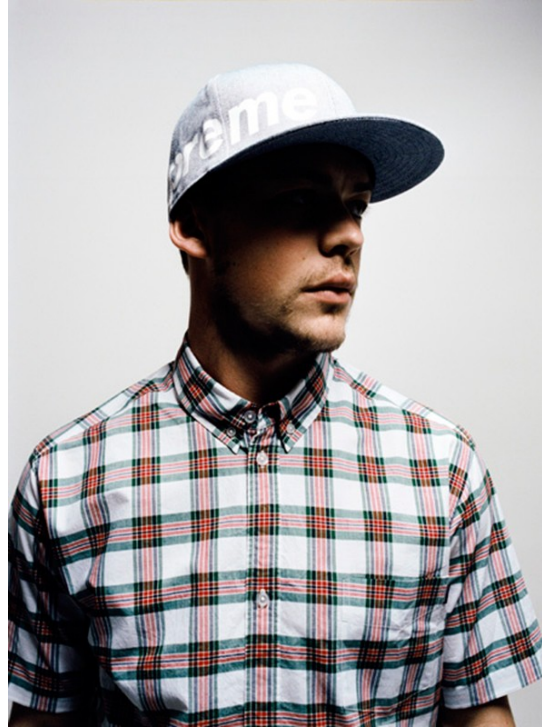
[www.art-dept.com](http://www.art-dept.com)

# Art Department



Kenneth Cappello

# Art Department



Kenneth Cappello

[www.art-dept.com](http://www.art-dept.com)

# Art Department



140



144



147

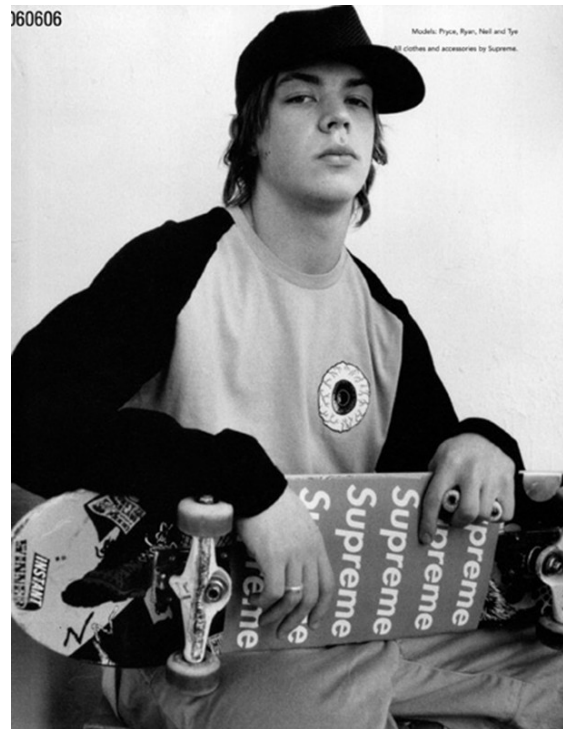
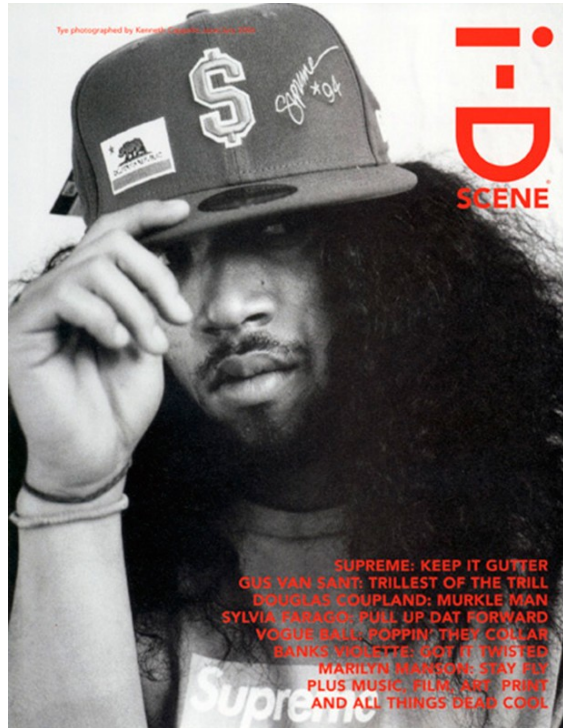


144

## Kenneth Cappello

[www.art-dept.com](http://www.art-dept.com)

# Art Department



Kenneth Cappello

[www.art-dept.com](http://www.art-dept.com)

# Art Department



Kenneth Cappello

[www.art-dept.com](http://www.art-dept.com)



# Art Department



Kenneth Cappello

[www.art-dept.com](http://www.art-dept.com)

# Art Department



Kenneth Cappello

[www.art-dept.com](http://www.art-dept.com)

# Art Department



Kenneth Cappello

# Art Department



Kenneth Cappello

# Art Department



Kenneth Cappello