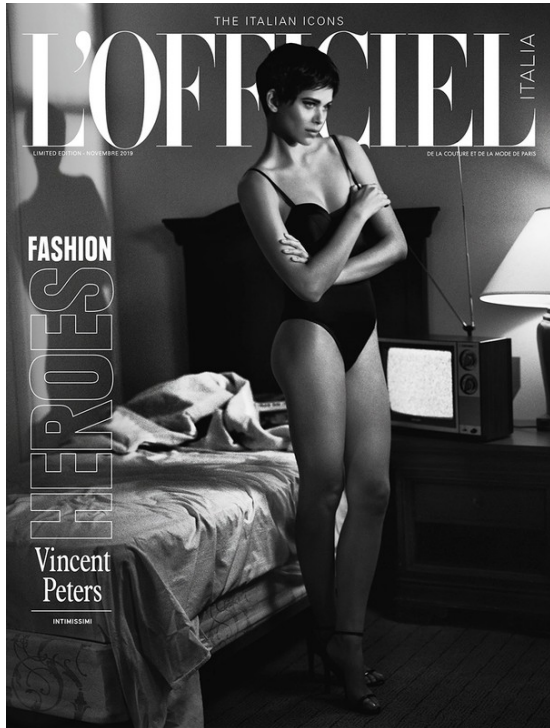


Art Department



Vincent Peters

www.art-dept.com

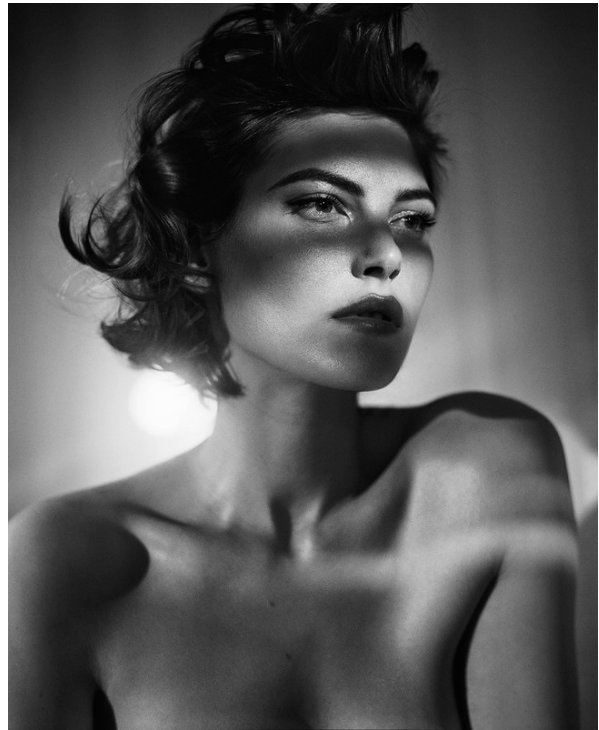
Art Department



Vincent Peters

www.art-dept.com

Art Department



Vincent Peters

www.art-dept.com

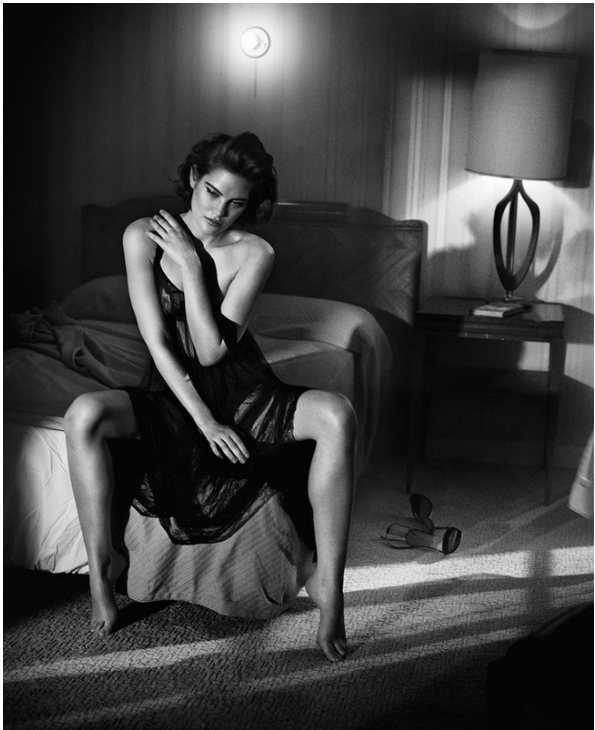
Art Department



Vincent Peters

www.art-dept.com

Art Department



Vincent Peters

www.art-dept.com

Art Department



Vincent Peters

www.art-dept.com

Art Department



Vincent Peters

www.art-dept.com

Art Department



Vincent Peters

www.art-dept.com

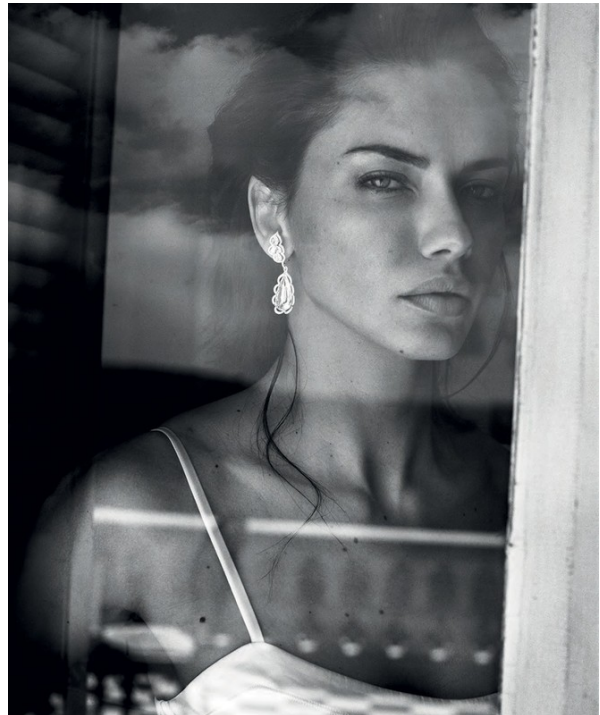
Art Department



Vincent Peters

www.art-dept.com

Art Department



Vincent Peters

www.art-dept.com

Art Department



Vincent Peters

Art Department



Vincent Peters

www.art-dept.com

Art Department



Vincent Peters

www.art-dept.com

Art Department



Vincent Peters

www.art-dept.com

Art Department



Vincent Peters

www.art-dept.com

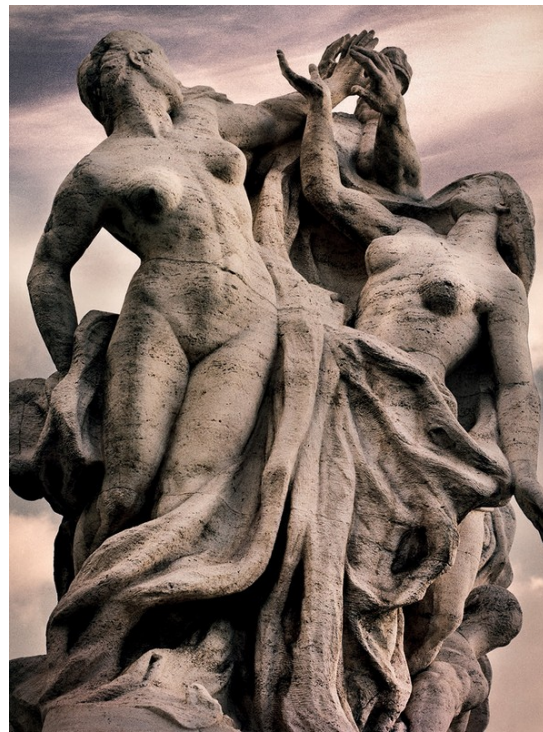
Art Department



Vincent Peters

www.art-dept.com

Art Department



Vincent Peters

www.art-dept.com

Art Department

ISLE
OF
DREAMS

Black silks and white chiffons
give drama to an evening
PHOTOGRAPHS BY VINCENT PETERS
STYLED BY MIRANDA ALMOND



Vincent Peters

www.art-dept.com

Art Department



Vincent Peters

www.art-dept.com

Art Department



Vincent Peters

www.art-dept.com