

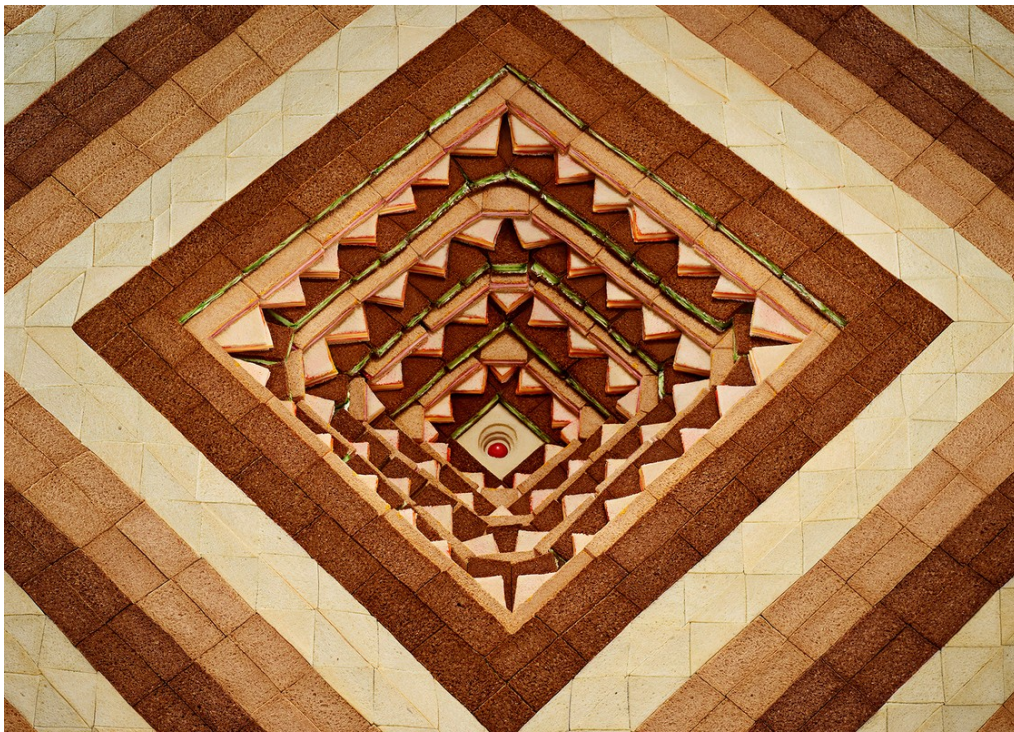
Art Department



Brett Kurzweil

www.art-dept.com

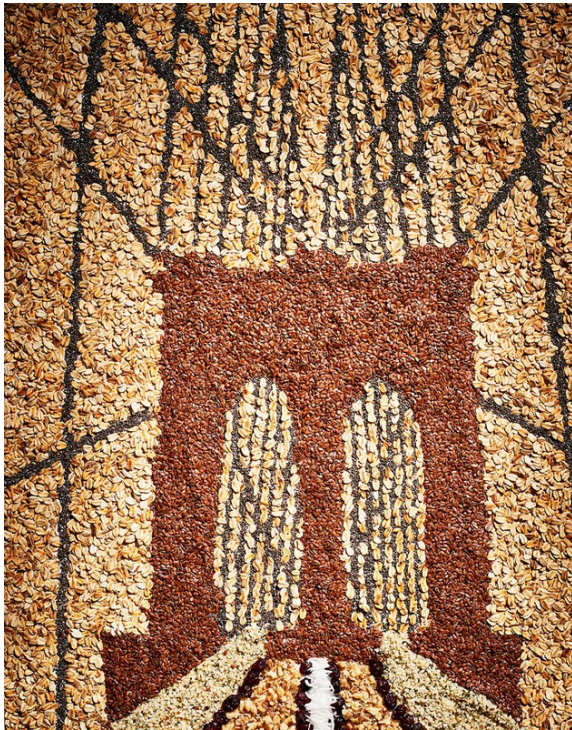
Art Department



Brett Kurzweil

www.art-dept.com

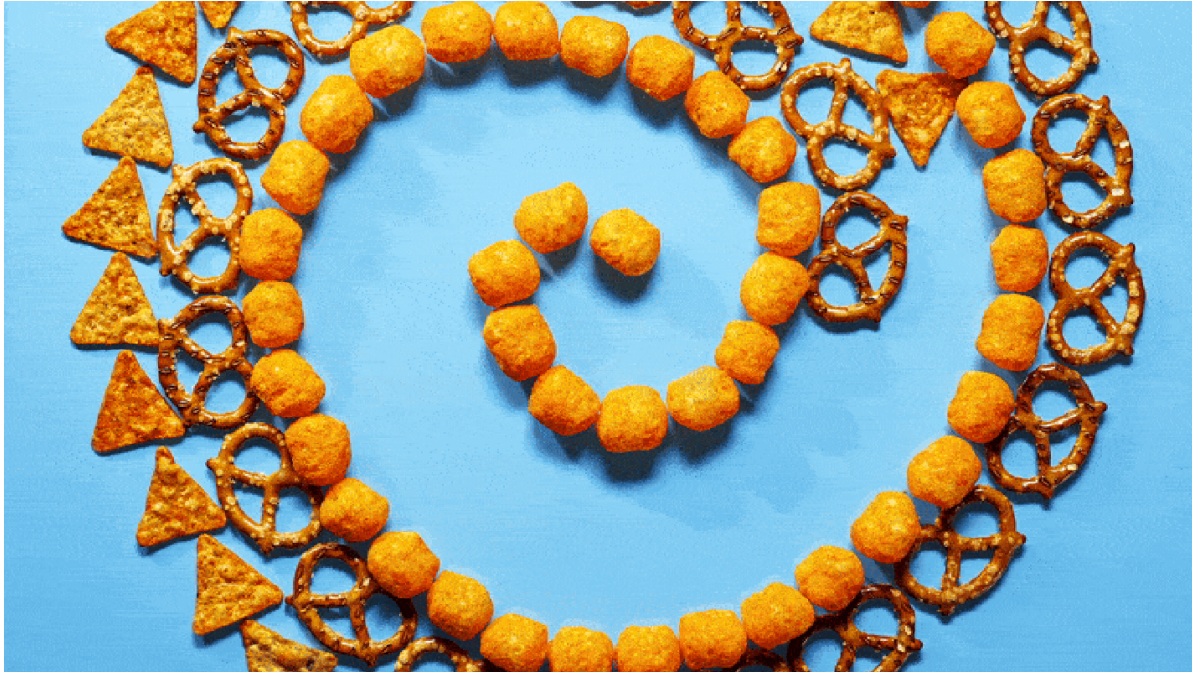
Art Department



Brett Kurzweil

www.art-dept.com

Art Department



Brett Kurzweil

Art Department



Brett Kurzweil

www.art-dept.com

Art Department



Brett Kurzweil

Art Department



Brett Kurzweil

Art Department



Brett Kurzweil

www.art-dept.com

Art Department



Brett Kurzweil

www.art-dept.com

Art Department



Brett Kurzweil

www.art-dept.com

Art Department



Brett Kurzweil

www.art-dept.com

Art Department



IN THE NUDE
MAIN MATERIALS | EXTERE
LACQUER PURE COLOUR
NAIL LACQUER IN NUDE
DITTE (22.010/indulger.com)
plus extra gold
nail studs (find similar
ones on ebay.com).
TIP TRICKS | Apply a
base coat, two coats
of nude lacquer and
a layer of top coat
to every nail except
your ring fingers.
Then go back and
apply a top coat to
one ring finger, dot-
ting an extra dollop
in three spots
where you will place
gold studs. (Kandice
says to skip adhesive,
because it dulls your
studs.) Use pointy-
tipped tweezers to lay
the studs in a verti-
cal line, cuticle to tip.
Then repeat on the
other ring finger.
HAIR | All gold ring
with red sequined
diamonds. [lucyart.net](#)

114 [more.com](#) | OCTOBER 2011



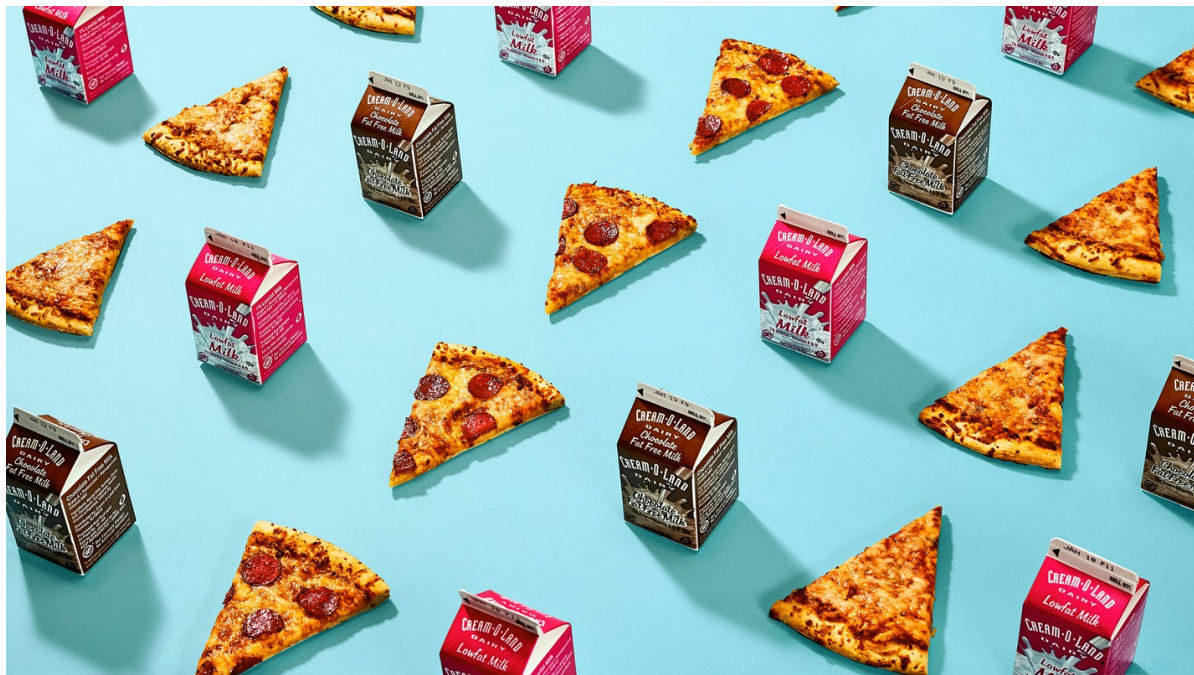
SPOT-IFY
MAIN MATERIALS | ZOYA NATURAL |
NAIL POLISH IN MAROON
(20.010.000) SALLY
HANSEN HARD AS
NAILS XTREME WEAR
IN WHITE ON (22-
0100000) SALLY
HANSEN HEART NAIL
ART TOOL KIT (27-
0100000), which con-
tains two brushes, a
stencil and a two-sided
dotting tool.
TIP TRICKS | Apply
a base coat, then two
coats of magenta
polish, and allow nails
to dry for about 10
minutes. Next, pour
a pea-size drop of
white lacquer on
a small, flat surface,
such as the bottom
of a plastic cup. Dip
the wider end of the
two-sided dotting
tool in the white pol-
ish and carefully tap
on your nails to cre-
ate spots. Allow the
dots to dry for five
minutes, then cover
the entire nail with
a layer of top coat. »



Brett Kurzweil

www.art-dept.com

Art Department



Brett Kurzweil

www.art-dept.com

Art Department



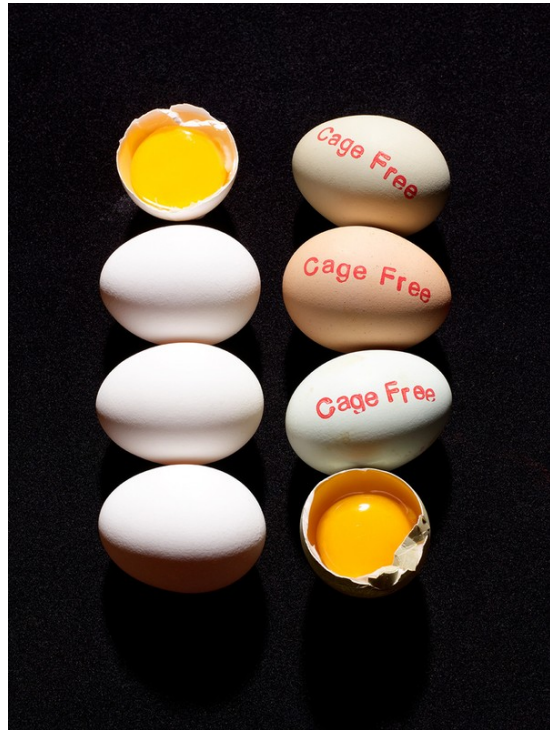
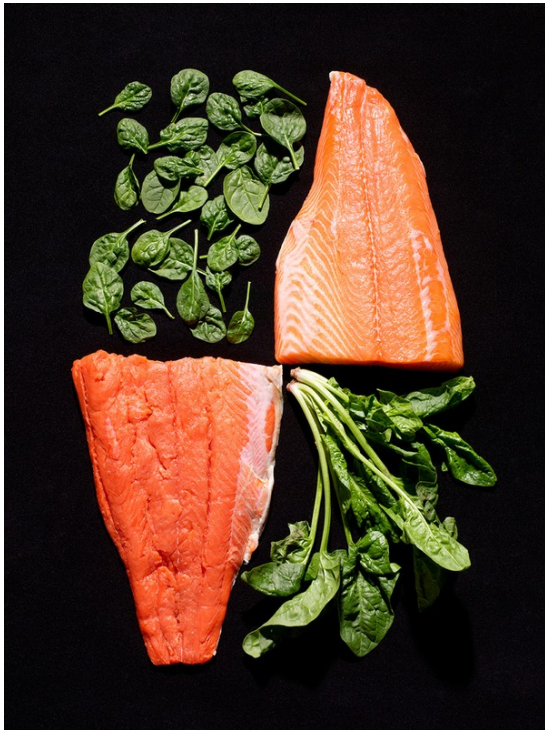
Brett Kurzweil

Art Department



Brett Kurzweil

Art Department



Brett Kurzweil

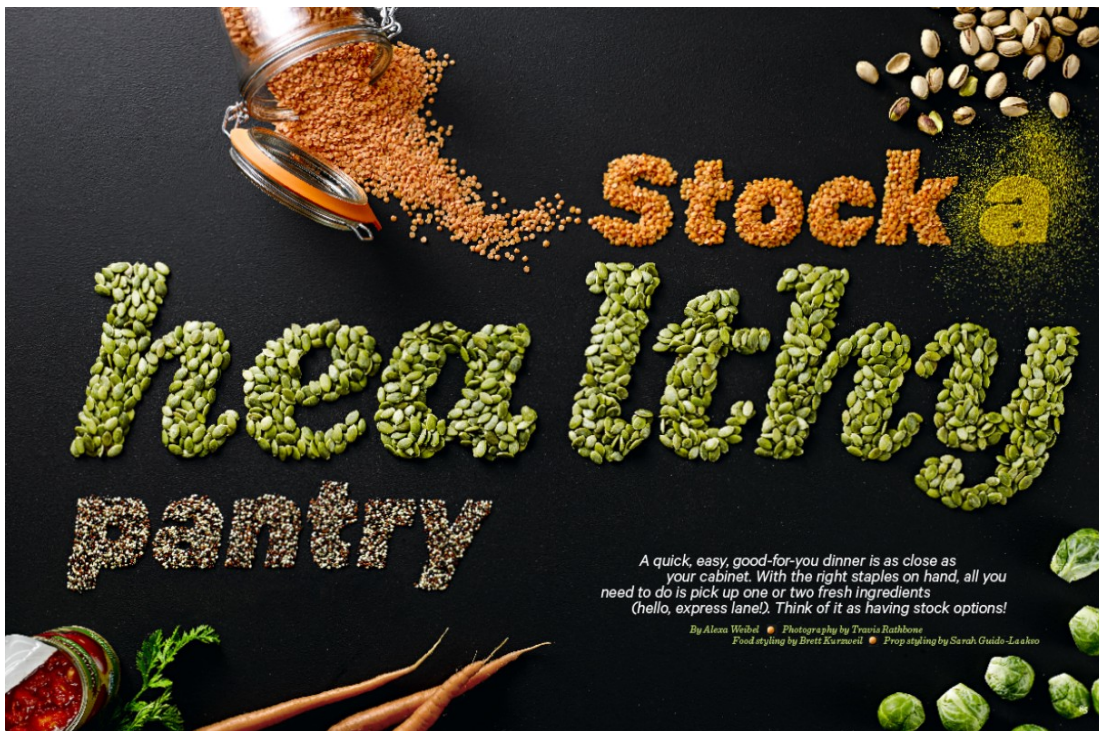
Art Department



Brett Kurzweil

www.art-dept.com

Art Department



A quick, easy, good-for-you dinner is as close as your cabinet. With the right staples on hand, all you need to do is pick up one or two fresh ingredients (hello, express lane!). Think of it as having stock options!

By Alexa Weibel • Photography by Travis Rathbone
Food styling by Brett Kurzweil • Prop styling by Sarah Guido-Lashko

Brett Kurzweil

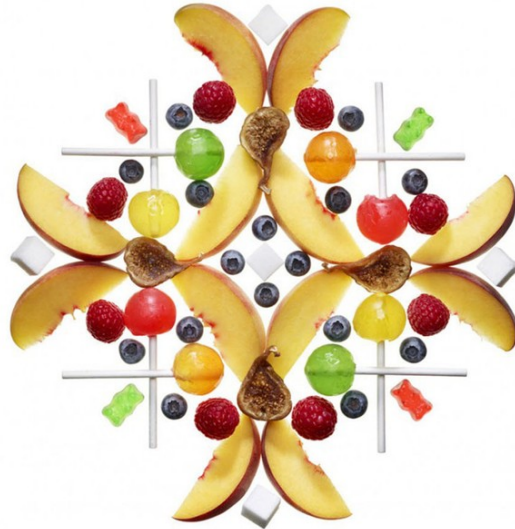
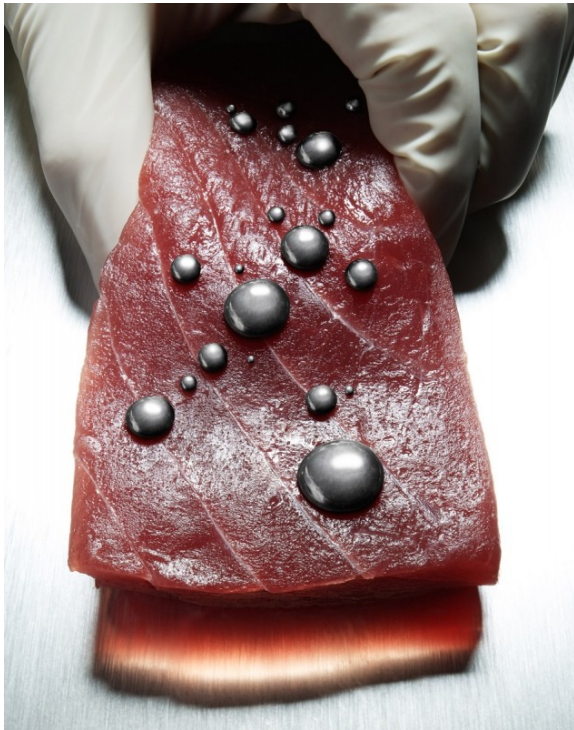
www.art-dept.com

Art Department



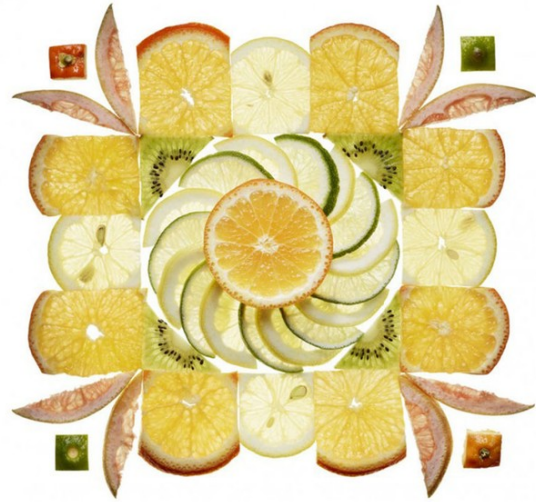
Brett Kurzweil

Art Department



Brett Kurzweil

Art Department



DEAN & DELUCA
THE ICON OF THE AMERICAN EPICUREAN EXPERIENCE



ALSO
BRINGING
YOU OUR
FINEST
WINES!

SPRING 2008 DEANDELUCA.COM

DEAN & DELUCA
THE ICON OF THE AMERICAN EPICUREAN EXPERIENCE



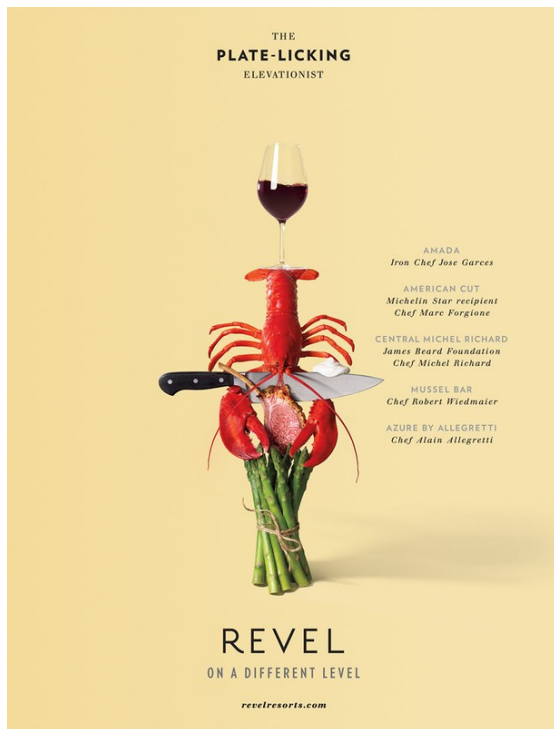
ALSO
BRINGING
YOU OUR
FINEST
WINES!

HOLIDAY ENTERTAINING 2007 DEANDELUCA.COM

Brett Kurzweil

www.art-dept.com

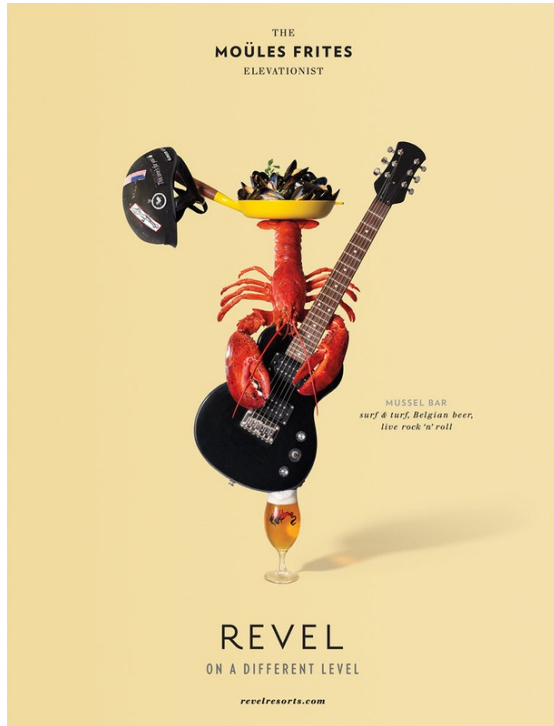
Art Department



Brett Kurzweil

www.art-dept.com

Art Department



Brett Kurzweil

www.art-dept.com

Art Department



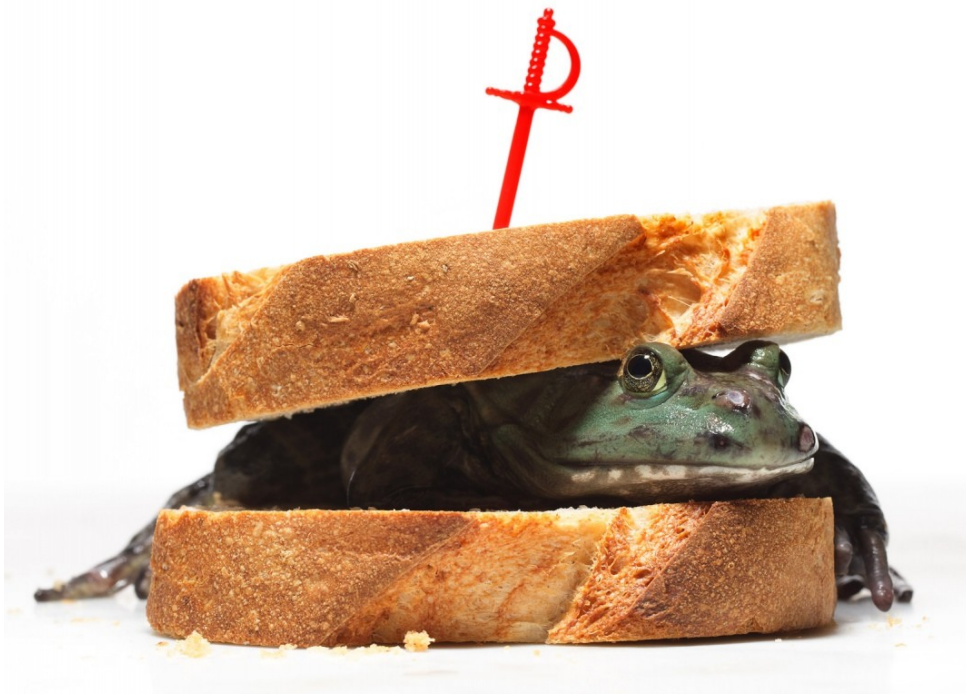
Brett Kurzweil

Art Department



Brett Kurzweil

Art Department



Brett Kurzweil

www.art-dept.com

Art Department



Brett Kurzweil

Art Department



Brett Kurzweil

www.art-dept.com