

Art Department



BORN

TO

ROAM

ONA BEACH
STATE PARK
♦
LOUIS VUITTON
wool and leather coat,
\$10,200;
wool and cashmere
sweater, \$1,000; and
wool pants, \$850.
JOHN LOBB leather
boots, \$1,815.
ALBERTUS
SWANEPOEL
felt hat, \$380.
For details,
see page 165.

Run, walk, and wander along the Oregon
coast with model and designer Garrett Neff,
who packed fall's best outerwear.

Photographs by Arnaldo Anaya Lucca
Styled by Matthew Edelstein

123

Jamal Hammadi

www.art-dept.com

Art Department



OTTER ROCK

◆
TOD'S shearling
jacket, \$6,175.

A.P.C. wool
sweater, \$370.

VINCE wool
and cashmere
turtleneck, \$295.

Jamal Hammadi

www.art-dept.com

Art Department



MARINE GARDENS
AT OTTER ROCK

✦
ERMEGILDO
ZEGNA
vicuña and
cashmere sweater,
\$1,650. BERLUTI
wool pants, \$850.
ALBERTUS
SWANEPOEL
felt hat, \$380.

Jamal Hammadi

www.art-dept.com

Art Department



Jamal Hammadi

www.art-dept.com

Art Department



KELLY'S BRIGHTON
MARINA

BOTTEGA VENETA
wool sweater, \$1,200.
Z ZEGNA wool pants,
\$695. SUNSPEL
T-shirt, \$90.

Jamal Hammadi

www.art-dept.com

Art Department



Jamal Hammadi

www.art-dept.com

Art Department



Jamal Hammadi

www.art-dept.com

Art Department



Jamal Hammadi

www.art-dept.com

Art Department



Jamal Hammadi

www.art-dept.com

Art Department



Jamal Hammadi

www.art-dept.com

Art Department



Jamal Hammadi

www.art-dept.com

Art Department

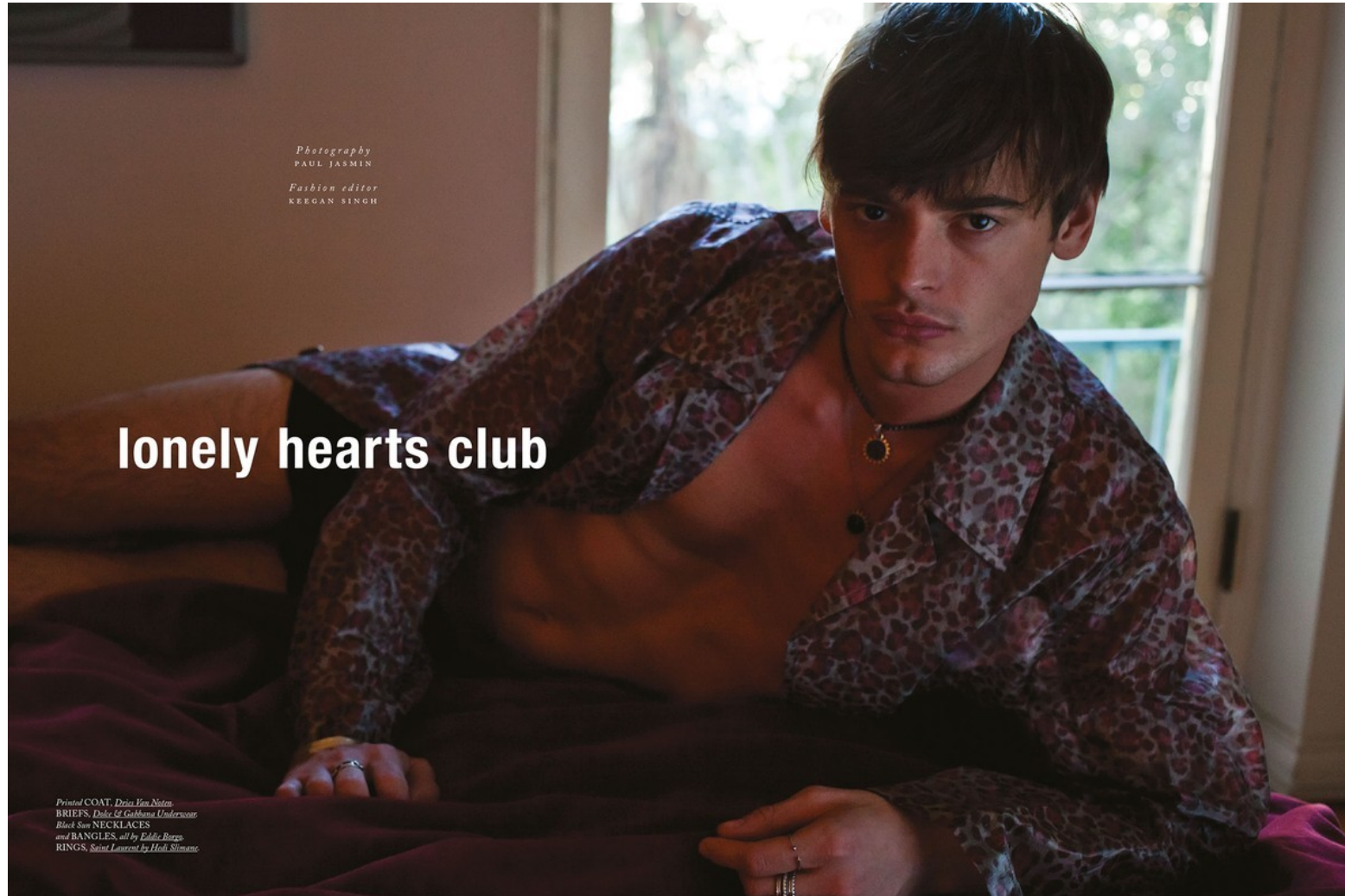


Blouson en velours côtelé rebrodé, chemise à col lavallière en soie,
jean en coton, chaîne, bague et collier, **Gucci**, Chemise à carreaux en
laine, **Golden Goose Deluxe Brand**, Chaussettes et baskets,
Aerie Studios. Réalisation : Jean Michel Ducrocq. Mannequin : Ryan
Reating chez Metropolitan Models. Maquillage et coiffure : Jamal
Hammadi chez Forward Artists. Décor : Maxim Jazek chez Walter
Schupfer Management. Numérique : David English. Retouche :
Spring Post. Production : Brandon Zagha.

Jamal Hammadi

www.art-dept.com

Art Department



Jamal Hammadi

www.art-dept.com

Art Department



BLAZER with metal fringes, SNEAKERS,
denim TROUSERS, BRACELETS
and RINGS, all by *Saint Laurent by Hedi
Slimane*. Black TOP, *Emporio Armani*.
Black Sun NECKLACES and BANGLES,
all by *Eddie Borgo*.

Jamal Hammadi

www.art-dept.com

Art Department



*White BLAZER, Ermenegildo Zegna.
Black TANK TOP, Neil Barrett.
Black denim TROUSERS and studded
SNEAKERS, Saint Laurent.
by Hedi Slimane.*

Jamal Hammadi

www.art-dept.com

Art Department



Leather biker jacket by Neil Barrett; Patterned shirt by Prada; Metallic trousers by James Long.

grooming Jamal Hammadi at Stewarts Artists using Hammadi Organic; model Tammy Kustanov; casting director Shelly Durkan; retouching and photographic assistant Missa Mahic; styling assistant Gary Ameshing

Jamal Hammadi

www.art-dept.com

Art Department



This page:
Rhinestone studded floral shirt
by Prada; Hawaiian shirt (worn
undereath) from Carlo Manzi.

Opposite page:
Rhinestone studded jacket by
Prada; Hawaiian shirt (worn
undereath) and studded belt
from Carlo Manzi; Patterned
neck scarf by Hardy Amies;
Jeans by D&Gquared².

Jamal Hammadi

www.art-dept.com

Art Department



Jamal Hammadi

www.art-dept.com

Art Department



Jamal Hammadi

www.art-dept.com

Art Department



Jamal Hammadi

www.art-dept.com

Art Department



Jamal Hammadi

www.art-dept.com

Art Department



Jamal Hammadi

www.art-dept.com

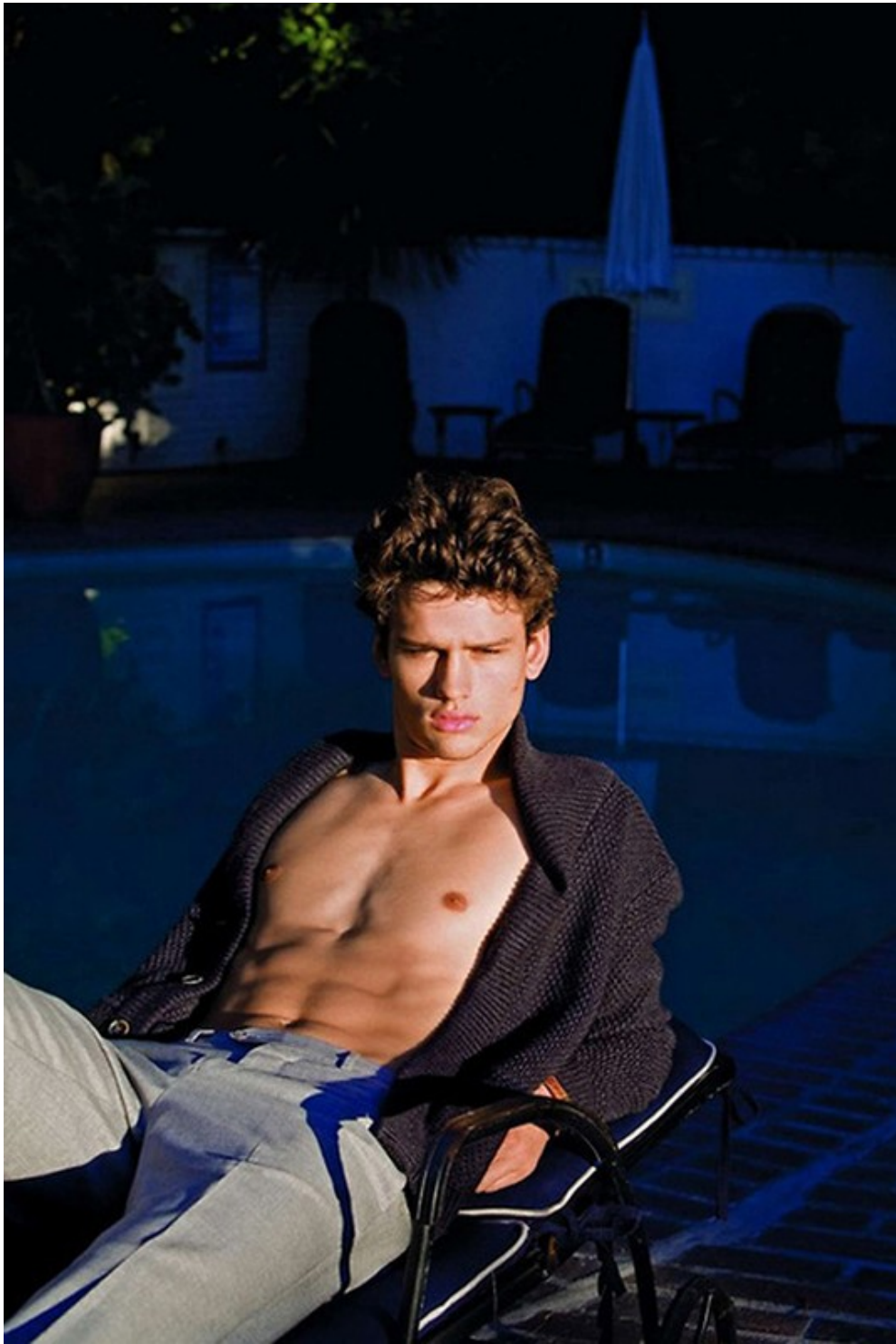
Art Department



Jamal Hammadi

www.art-dept.com

Art Department



Jamal Hammadi

www.art-dept.com

Art Department



Jamal Hammadi

www.art-dept.com

Art Department



Jamal Hammadi

www.art-dept.com

Art Department



Jamal Hammadi

www.art-dept.com

Art Department



Jamal Hammadi

www.art-dept.com

Art Department



Jamal Hammadi

www.art-dept.com