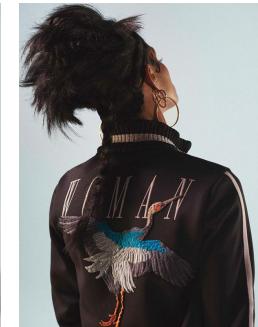
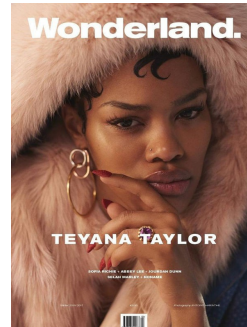


Art Department



Dennis Devoy

www.art-dept.com

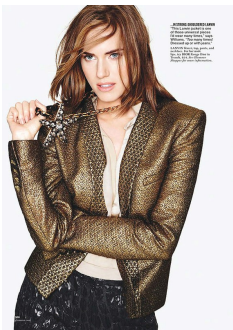
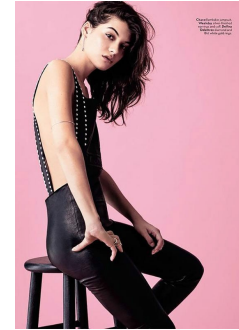
Art Department



Dennis Devoy

www.art-dept.com

Art Department



Liv
in the MOMENT

This season's coolest '60s-inspired pieces could have been fashioned with LIV ULLMANN in mind. The actress talks to TOM SHONE about her independent life choices, the importance of good manners and why she is really an old-fashioned girl at heart.

Photographs by MICHEL BEVERIDGE
Styling by NATALIE HEWITTE



Cut by Andie



Cut by Phoebe
Crew and Chic, Tulle
by Colee Kim
Culottes, Belt by
Hugo Boss by Jimmy
Choo



Cut by Nina Ricci Top
by Herve Herve
Purse by Jimmy Choo



Dennis Devo

www.art-dept.com

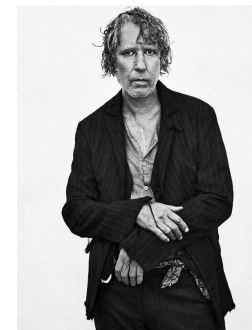
Art Department



Dennis Devoynyc

www.art-dept.com

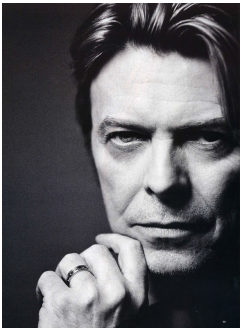
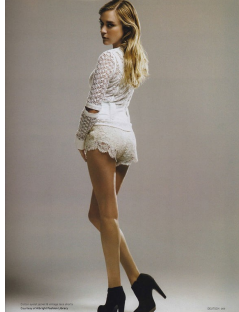
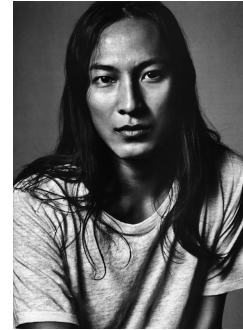
Art Department



Dennis Devoy

www.art-dept.com

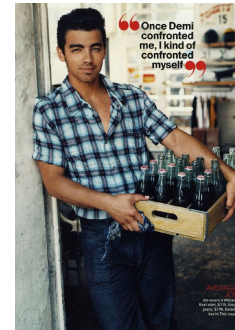
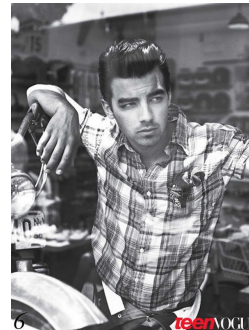
Art Department



Dennis Devoy

www.art-dept.com

Art Department



Dennis Devoy

www.art-dept.com