

Art Department

B B
R G
O L
K A
E S
N S
S



PHOTOGRAPHER
WALTER CHIN

Katsumi Matsuo

www.art-dept.com

Art Department



Katsumi Matsuo

www.art-dept.com

Art Department



Shirt: CP Company
Jacket: EFM Engineered For Motion

Katsumi Matsuo

www.art-dept.com

Art Department



Katsumi Matsuo

www.art-dept.com

Art Department



Katsumi Matsuo

www.art-dept.com

Art Department



Shirt: CP Company
Jacket: EFM Engineered for Motion

184

Katsumi Matsuo

www.art-dept.com

Art Department



Katsumi Matsuo

www.art-dept.com

Art Department



Shirt: Thom Browne
Shirt (around waist): Thom Browne
Shorts: EFM Engineered For Motion
Shoes: Thom Browne

Katsumi Matsuo

www.art-dept.com

Art Department



Katsumi Matsuo

www.art-dept.com

Art Department



Katsumi Matsuo

www.art-dept.com

Art Department



Katsumi Matsuo

www.art-dept.com

Art Department



Katsumi Matsuo

www.art-dept.com

Art Department



NEW AUTHENTICITY

成功者のスーツ、その最新。

ただただ生真面目なだけのビジネス・スーティングや、トレンドを求め過ぎるスーツ選びから、
そろそろプリンシプルに沿った王道のスーティングに切り替えてはいかがだろうか。
仕事着でもお洒落でもない、男のキャリアを物語る、本物のスーツ選びこそが成功者の証しだ。

PHOTOGRAPHS by ARNALDO ANAYA-LUCCA @ART DEPARTMENT
DIRECTION & STYLING by TAKAFUMI KAWASAKI GROOMING: KATSUMI MATSUO @ART DEPARTMENT
MODEL: CHRIS BROWN @ FORD PHOTO ASSISTANTS: NORMAN GERARD and GERMANO CHU DIGITAL TECH: IRA MORRIS
PRODUCER: AMES PETROSSI @ART DEPARTMENT COURTESY of ANDAZ WALL STREET www.wallstreet.andaz.hyatt.com

60 ESQUIRE'S BIG BLACK BOOK

Katsumi Matsuo

www.art-dept.com

Art Department



Katsumi Matsuo

www.art-dept.com

Art Department



Katsumi Matsuo

www.art-dept.com

Art Department



Katsumi Matsuo

www.art-dept.com

Art Department



Katsumi Matsuo

www.art-dept.com

Art Department



Katsumi Matsuo

www.art-dept.com

Art Department



Katsumi Matsuo

www.art-dept.com

Art Department



Katsumi Matsuo

www.art-dept.com

Art Department



Katsumi Matsuo

www.art-dept.com

Art Department



Katsumi Matsuo

www.art-dept.com

Art Department



Katsumi Matsuo

www.art-dept.com

Art Department



Katsumi Matsuo

www.art-dept.com

Art Department



Katsumi Matsuo

www.art-dept.com

Art Department



Katsumi Matsuo

www.art-dept.com

Art Department



Katsumi Matsuo

www.art-dept.com

Art Department



Katsumi Matsuo

www.art-dept.com

Art Department



Katsumi Matsuo

www.art-dept.com

Art Department



Katsumi Matsuo

www.art-dept.com

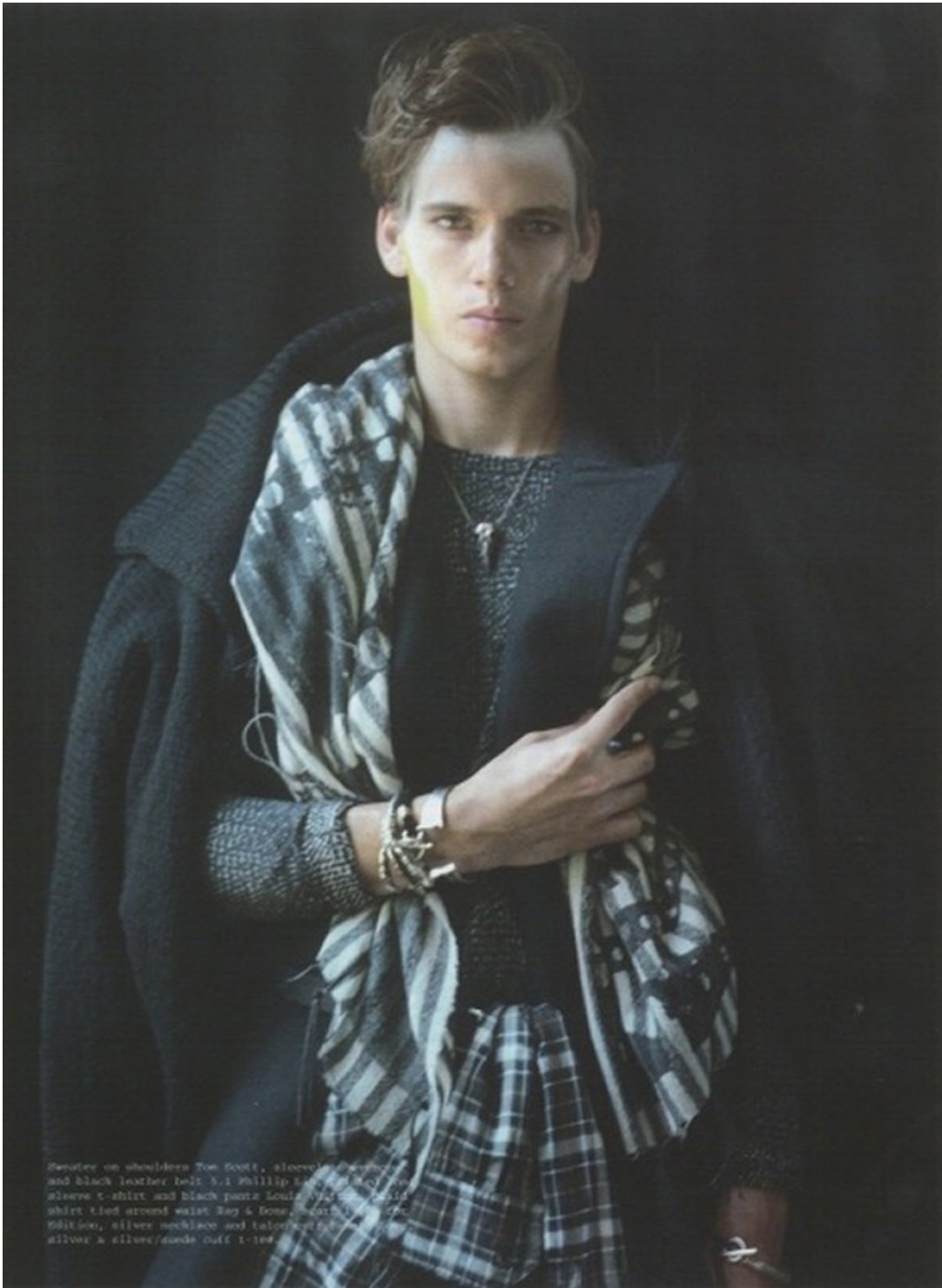
Art Department



Katsumi Matsuo

www.art-dept.com

Art Department



Katsumi Matsuo

www.art-dept.com

Art Department



Katsumi Matsuo

www.art-dept.com

Art Department



Katsumi Matsuo

www.art-dept.com

Art Department



Katsumi Matsuo

www.art-dept.com

Art Department



Katsumi Matsuo

www.art-dept.com

Art Department



Katsumi Matsuo

www.art-dept.com

Art Department



Katsumi Matsuo

www.art-dept.com

Art Department



Katsumi Matsuo

www.art-dept.com

Art Department



Katsumi Matsuo

www.art-dept.com

Art Department



Katsumi Matsuo

www.art-dept.com

Art Department



Katsumi Matsuo

www.art-dept.com

Art Department



Katsumi Matsuo

www.art-dept.com

Art Department



Katsumi Matsuo

www.art-dept.com

Art Department



Katsumi Matsuo

www.art-dept.com

Art Department



Katsumi Matsuo

www.art-dept.com

Art Department



Katsumi Matsuo

www.art-dept.com

Art Department



Katsumi Matsuo

www.art-dept.com

Art Department



Katsumi Matsuo

www.art-dept.com

Art Department



Katsumi Matsuo

www.art-dept.com

Art Department



Katsumi Matsuo

www.art-dept.com

Art Department



Katsumi Matsuo

www.art-dept.com

Art Department



Katsumi Matsuo

www.art-dept.com

Art Department



Katsumi Matsuo

www.art-dept.com

Art Department



Katsumi Matsuo

www.art-dept.com

Art Department



Katsumi Matsuo

www.art-dept.com

Art Department



Katsumi Matsuo

www.art-dept.com

Art Department



Katsumi Matsuo

www.art-dept.com

Art Department



Katsumi Matsuo

www.art-dept.com

Art Department



Notch collar hacking pocket blazer, \$300, trousers,
\$135, charcoal plaid shirt, \$85, vest, price upon
request, navy wool tie, \$69.50.
All clothing available at VinceCamuto.com.

Model: Thorben Gärner at WNY
Grooming by Katsumi Matsuo at
ArtMix Beauty using Redken
Photo assistant: Di Di Lin
Fashion assistant: Adelaide Collet

Shot at W New York - Downtown
123 Washington Street, NYC,
646-826-8600.

115

Katsumi Matsuo

www.art-dept.com

Art Department



Suit jacket, \$1,995, suit
pants, \$1,322.50, shirt,
\$1,590. LANVIN. Available at
Lanvin, NYC, 212-672-2886.

Katsumi Matsuo

www.art-dept.com

Art Department

TRICOLOR

In clothes as in life, balance is everything. Bold, vibrant colors temper the fussy, formal look of a three-button suit, creating an elegant evening look that's also relaxed and youthful.

Burgundy suit blazer, \$2,295.
Burgundy suit pants, \$775.
VERSACE. Available at select Versace boutiques, 888-721-7219. Burgundy loafers with gold chain, price upon request, **VERSACE.** Similar styles available at select Versace boutiques, 888-721-7219. Pink shirt, \$475, **GIORGIO ARMANI.** Available at Giorgio Armani boutiques nationwide.

Katsumi Matsuo

www.art-dept.com

Art Department



Printed shirt, \$1,100, HERMÈS.
Available at Hermès stores
nationwide, 800-441-4488, and
Hermès.com. Suit, \$945, BOSS.
Available at HugoBoss.com
and 800-HugoBoss.

Katsumi Matsuo

www.art-dept.com

Art Department



SOFT TOUCH

For an even more laid-back look, you can't beat the unlined, deconstructed version.

The soft tailoring and loose construction are perfect not only for spring temps, but also for this season's easy-living vibe. Wear one with an eye-catching print to really get noticed.

Blue large dot oversize shirt, \$595, indigo cropped caban, \$1,595, slim leg trousers, \$795, **BURBERRY PROFSUM**, burberry.com. Shoes, \$295, MUGO. Available at hugoboss.com and 800-HugoBoss.

Katsumi Matsuo

www.art-dept.com