

# Art Department



## BEYOND THE PALE

On the streets of New York City, winter whites have met their match when paired with feminine silhouettes and soft fabrics.

PHOTOGRAPHY BY  
**CHRISTOPHER FERGUSON**

STYLING BY  
**SEPPE TIRABASSI**

160.venicemagftl.com

## Katsumi Matsuo

[www.art-dept.com](http://www.art-dept.com)

# Art Department



This page: **Jil Sander** jacket, available at Bal Harbour Shops, [jilsander.com](http://jilsander.com); **Akris** blouse, available at Bal Harbour Shops, [akris.ch](http://akris.ch); **Jonathan Simkhai** jeans, available at Neiman Marcus at Bal Harbour Shops, [jonathansimkhai.com](http://jonathansimkhai.com).

Opposite page: **CALVIN KLEIN** 205W39NYC dress and heels, available at Aventura Mall, [calvinklein.com](http://calvinklein.com).

[venicemagf1.com](http://venicemagf1.com) 161

## Katsumi Matsuo

[www.art-dept.com](http://www.art-dept.com)

# Art Department



Chanel dress, available at  
Bal Harbour Shops, [chanel.com](http://chanel.com).

[venicemagftl.com](http://venicemagftl.com) 163

## Katsumi Matsuo

[www.art-dept.com](http://www.art-dept.com)

# Art Department



**Roberto Cavalli** coat, available at Aventura Mall, [robertocavalli.com](http://robertocavalli.com); **Jonathan Simkhai** jeans, available at Neiman Marcus at Bal Harbour Shops, [jonathansimkhai.com](http://jonathansimkhai.com); **Manolo Blahnik x Jonathan Simkhai** boots, available at Neiman Marcus at Bal Harbour Shops, [manoloblahnik.com](http://manoloblahnik.com); **Bonheur** ring, available at Calypso St. Barth in Coral Gables, [bonheurljewelry.com](http://bonheurljewelry.com).

## Katsumi Matsuo

[www.art-dept.com](http://www.art-dept.com)

# Art Department

## FASHION

### TOP GEAR

Athletic inspiration is still going strong, as the resort collections bring chicer-than-ever updates to gym-class staples

PHOTOGRAPHED BY DAYMION MARDEL  
STYLED BY YASHUA SIMMONS  
EDITED BY JOANN PAILEY

Hair by Katsumi Matsuo at Art Department for Bumble and bumble, makeup by Campbell Ritchie at Art Department for Chanel, manicure by Kelly B. at De Facto for Chanel, casting by Paul Brickman at Zan Casting, model: Nicole Alleno at Wilhelmina, fashion assistant: Taylor Hicks



①

#### TRACK STAR

In emerald satin, Valentino's new evening "suit" goes the distance—all the way to cocktail hour

Hammered-satin track jacket, \$1,900; pants, \$1,890, both, VALENTINO, at Valentino boutiques nationwide. Gold-plated hoop earrings, ELIZABETH AND JAMES, \$165. Chain choker, \$700, necklace, \$1,350, both, JENNIFER FISHER. Pendant necklace, ELI HALEL, \$4,500. Rubber slides, VALENTINO GARAVANI, \$725. For details, see Shopping Guide.

ELLE 89

## Katsumi Matsuo

[www.art-dept.com](http://www.art-dept.com)

# Art Department

## FASHION TRENDS

4

### THE RIGHT STRIPES

Re-envisioned, the classic rugby stripe packs a graphic punch on skirts and blouses

Right: Viscose top, \$1,570, cotton skirt, \$1,890, both, **BOTTEGA VENETA**. Earrings, **ARIANA BOUSSARD-REIFEL**, \$265. Sandals, **ALCHIMIA DI BALLIN**, \$695. Far right: Satin shirt, \$990, shantung skirt, \$2,100, leather pumps, \$1,295, all, **CALVIN KLEIN 205W39NYC**. For details, see Shopping Guide.



## Katsumi Matsuo

[www.art-dept.com](http://www.art-dept.com)

# Art Department



Katsumi Matsuo

[www.art-dept.com](http://www.art-dept.com)

# Art Department

FASHION TRENDS



5

## SWEAT EQUITY

Paired with a hoodie, classic suiting is now cooler—and cozier—than ever

Far left: Cotton parka, \$3,150, pants, \$990, pumps, \$650, all, FENDI. Cotton hoodie, HERON PRESTON, \$536. Chain choker, JENNIFER FISHER, \$330. Left: Houndstooth jacket, \$1,990, pants, \$1,090, both, RALPH LAUREN COLLECTION. Cotton hoodie, STUSSY, \$76. Sneakers, PIERRE HARDY, \$555. For details, see Shopping Guide.

Hair by Katsumi Matsuo at Art Department for Chanel, manicure by Kelly B at Die Facci for Chanel, casting by Paul Blackman at Zan Casting, models: Nicole Alleno and Adriana Beva at Muse Models, fashion assistant: Taylor Hicks

## Katsumi Matsuo

[www.art-dept.com](http://www.art-dept.com)



# Art Department

FASHION ELLE EXCLUSIVE

## ORIGINAL SCORE

A Big Apple icon aims to be 100 percent unique

For the seventh season running, Bloomingdale's has tapped more than 100 brands—from Burberry to Shinola—to fill its racks with pieces you won't find anywhere else. With so many of our favorite labels participating in "100% Bloomingdale's," it's hard to play favorites, but we can't resist this '70s-chic duet: high-waisted denim by Frame, plus Studio 54-worthy gold booties by Rebecca Minkoff.

Cotton-blend sweater, **WAVE**, \$88, jeans, **FRAME**, \$210, leather ankle boots, **REBECCA MINKOFF**, \$225, all at select Bloomingdale's stores nationwide. Gemfields ruby bracelet, **DEZSO BY SARA BELTRAN**, **GEMFIELDS X MUSE**, \$2,800. Stylist's own belt and fishnet socks. For details, see Shopping Guide.

Hair by Katsumi Matsuo at Art Department for Bumble and Bumble, make-up by Campbell Riche at Art Department for Chanel, manicure by Kelly B at De Facto for Chanel, casting by Paul Brickman at Zan Casting, model: Nicole Atieno at Wilhelmina, fashion assistant: Taylor Hicks



117

## Katsumi Matsuo

[www.art-dept.com](http://www.art-dept.com)

# Art Department



Katsumi Matsuo

[www.art-dept.com](http://www.art-dept.com)

# Art Department



Katsumi Matsuo

[www.art-dept.com](http://www.art-dept.com)

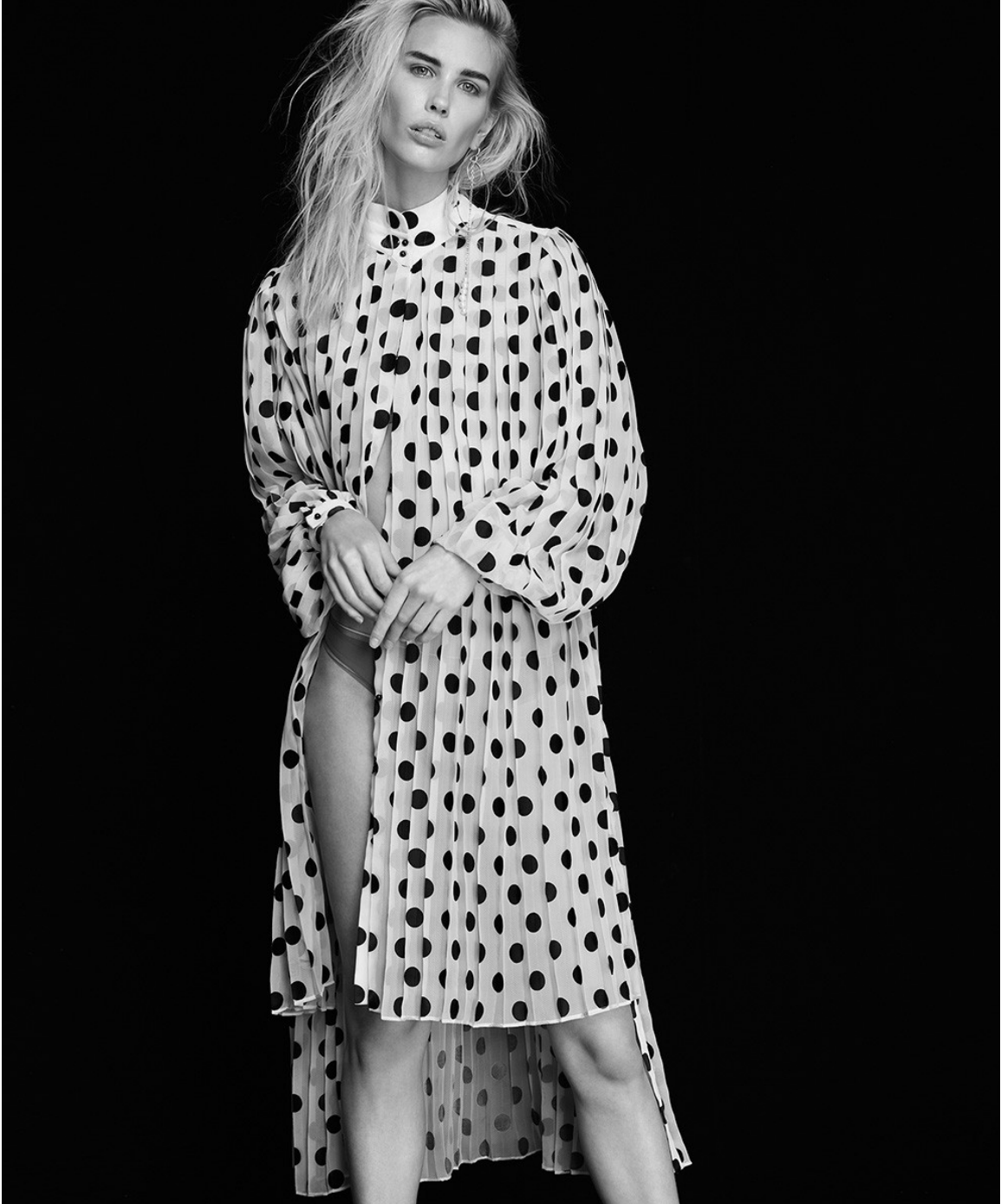
# Art Department



Katsumi Matsuo

[www.art-dept.com](http://www.art-dept.com)

# Art Department



Katsumi Matsuo

[www.art-dept.com](http://www.art-dept.com)

# Art Department



Katsumi Matsuo

[www.art-dept.com](http://www.art-dept.com)

# Art Department



Katsumi Matsuo

[www.art-dept.com](http://www.art-dept.com)

# Art Department



Katsumi Matsuo

[www.art-dept.com](http://www.art-dept.com)



# Art Department



Katsumi Matsuo

[www.art-dept.com](http://www.art-dept.com)

# Art Department



Katsumi Matsuo

[www.art-dept.com](http://www.art-dept.com)

# Art Department



Katsumi Matsuo

[www.art-dept.com](http://www.art-dept.com)

# Art Department



Katsumi Matsuo

[www.art-dept.com](http://www.art-dept.com)

# Art Department



Katsumi Matsuo

[www.art-dept.com](http://www.art-dept.com)

# Art Department



Katsumi Matsuo

[www.art-dept.com](http://www.art-dept.com)

# Art Department



Katsumi Matsuo

[www.art-dept.com](http://www.art-dept.com)

# Art Department



Katsumi Matsuo

[www.art-dept.com](http://www.art-dept.com)



# Art Department



Katsumi Matsuo

[www.art-dept.com](http://www.art-dept.com)

# Art Department



Katsumi Matsuo

[www.art-dept.com](http://www.art-dept.com)

# Art Department



Katsumi Matsuo

[www.art-dept.com](http://www.art-dept.com)

# Art Department



Katsumi Matsuo

[www.art-dept.com](http://www.art-dept.com)

# Art Department



Katsumi Matsuo

[www.art-dept.com](http://www.art-dept.com)

# Art Department



Katsumi Matsuo

[www.art-dept.com](http://www.art-dept.com)

# Art Department



Katsumi Matsuo

[www.art-dept.com](http://www.art-dept.com)

# Art Department

PALM BEACH PRINTS / INSIDERS' BANGKOK / TAKEN WITH TULUM / EASY ICE CREAMS / HOT POETS / SUPER SUPPLEMENTS

# THE GLOSS

MAGAZINE

JUNE 2017

with THE IRISH TIMES



**KEEPING  
IT REAL**  
Summer style staples

BEAUTY  
&  
THE BEACH  
Poolside poise and polish

BEST-DRESSED TABLES, EXOTIC GEMS AND FABULOUS FIZZ  
**PLUS:** WAY TO GO! CHECK-IN CHIC

## Katsumi Matsuo

[www.art-dept.com](http://www.art-dept.com)



# Art Department



Katsumi Matsuo

[www.art-dept.com](http://www.art-dept.com)

# Art Department



Katsumi Matsuo

[www.art-dept.com](http://www.art-dept.com)

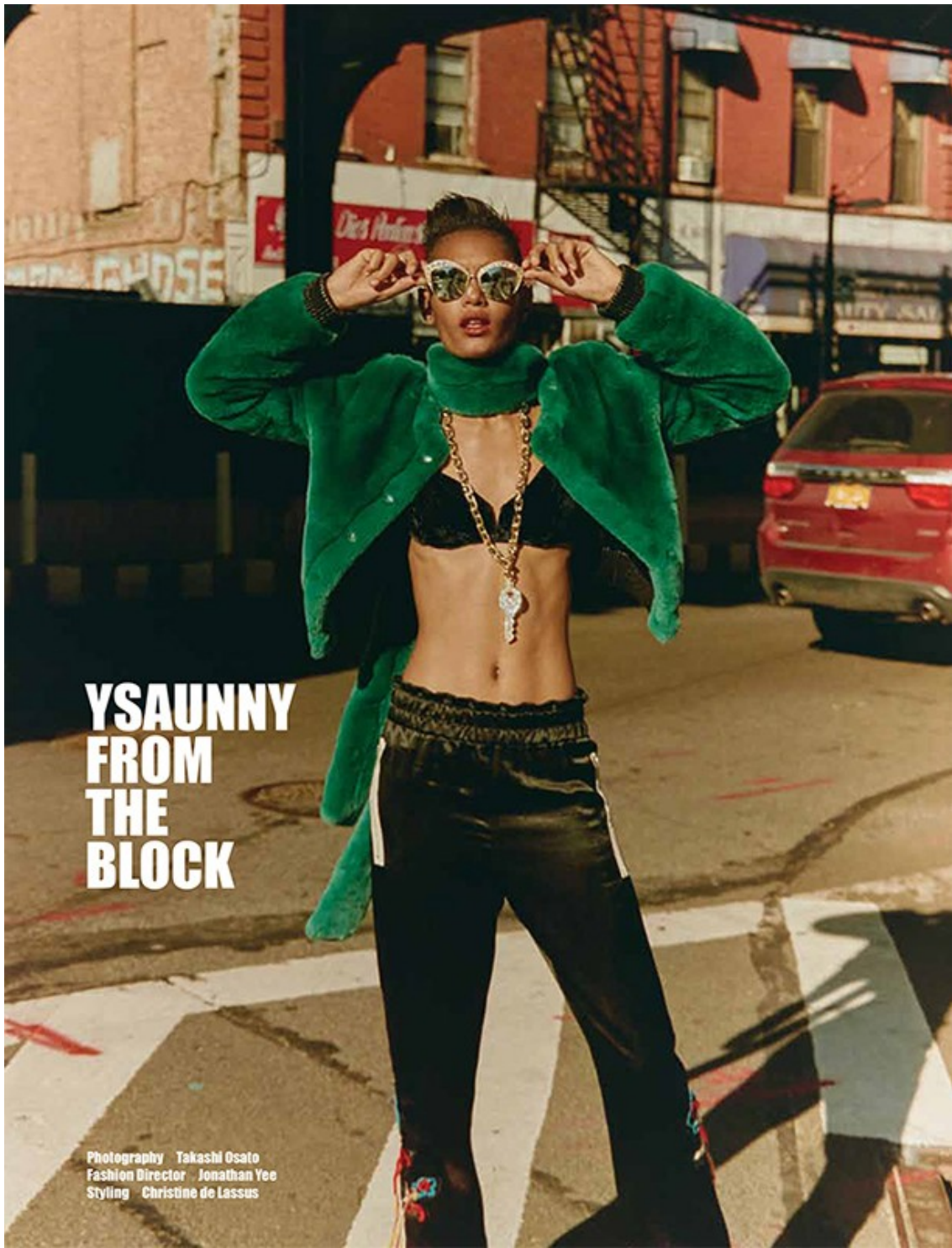
# Art Department



Katsumi Matsuo

[www.art-dept.com](http://www.art-dept.com)

# Art Department



Katsumi Matsuo

[www.art-dept.com](http://www.art-dept.com)

# Art Department



Katsumi Matsuo

[www.art-dept.com](http://www.art-dept.com)

# Art Department



Fur vest: *Adrienne Landau*,  
lace blouse with grosgrain  
ribbon bow: *Gucci*, jersey track  
trousers: *Julien Dagonne*, metal  
sunglasses: *Marc Jacobs*, and  
suede pumps: *Laurence D'Amico*

(Opposite) fur vest: *Adrienne  
Landau*, metallic leather skirt:  
*LLX*, gold-finished metal chain  
key pendant with rhinestones  
and platform monk shoes: *Marc  
Jacobs*, acetate sunglasses: *Gucci*,  
and sheer elastic socks: *Feder*

Hair: *Katsumi Mitsu* Make-up:  
*Katsumi Mitsu* Assistant: *Yuko  
Kobayashi* Production:  
Assistant: *Vivian Lee* Model:  
*Yasunori Kuroki* The Society  
Management

## Katsumi Matsuo

[www.art-dept.com](http://www.art-dept.com)

# Art Department

Fur hooded jacket *Missoni*,  
jersey track trousers with ruffle  
trim *Michael Kors*, and acetate  
sunglasses *Gucci*

(Opposite) silk viscose dress and  
metal chain necklace *Balenciaga*,  
and wool cap *Stephen Jones for  
Marc Jacobs*



## Katsumi Matsuo

[www.art-dept.com](http://www.art-dept.com)

# Art Department



Katsumi Matsuo

[www.art-dept.com](http://www.art-dept.com)



# Art Department



Katsumi Matsuo

[www.art-dept.com](http://www.art-dept.com)

# Art Department



Katsumi Matsuo

[www.art-dept.com](http://www.art-dept.com)

# Art Department



Katsumi Matsuo

[www.art-dept.com](http://www.art-dept.com)

# Art Department



Katsumi Matsuo

[www.art-dept.com](http://www.art-dept.com)

# Art Department



Katsumi Matsuo

[www.art-dept.com](http://www.art-dept.com)

# Art Department



Katsumi Matsuo

[www.art-dept.com](http://www.art-dept.com)

# Art Department



Katsumi Matsuo

[www.art-dept.com](http://www.art-dept.com)

# Art Department



Katsumi Matsuo

[www.art-dept.com](http://www.art-dept.com)



# Art Department



Katsumi Matsuo

[www.art-dept.com](http://www.art-dept.com)

# Art Department



Katsumi Matsuo

[www.art-dept.com](http://www.art-dept.com)

# Art Department



Katsumi Matsuo

[www.art-dept.com](http://www.art-dept.com)

# Art Department



PHOTOGRAPHER WALTER CHIN

Jumpsuit: Zero Maria Cornejo

## Katsumi Matsuo

[www.art-dept.com](http://www.art-dept.com)

# Art Department



Dress: PLEATS PLEASE Issey Miyake  
Pants: PLEATS PLEASE Issey Miyake

2

## Katsumi Matsuo

[www.art-dept.com](http://www.art-dept.com)

# Art Department



Katsumi Matsuo

[www.art-dept.com](http://www.art-dept.com)

# Art Department



Katsumi Matsuo

[www.art-dept.com](http://www.art-dept.com)

# Art Department



Katsumi Matsuo

[www.art-dept.com](http://www.art-dept.com)



# Art Department



Katsumi Matsuo

[www.art-dept.com](http://www.art-dept.com)

# Art Department



Shirt: Sacai  
Skirt: Sacai  
Shoes: Sacai

## Katsumi Matsuo

[www.art-dept.com](http://www.art-dept.com)

# Art Department



Katsumi Matsuo

[www.art-dept.com](http://www.art-dept.com)

# Art Department



## Katsumi Matsuo

[www.art-dept.com](http://www.art-dept.com)

# Art Department



Hat: Patricia Underwood  
Jacket: Thom Browne  
Shirt: Thom Browne  
Pants: Thom Browne  
Shoes: Arthur Arbesser  
Rings & Necklace: RJ Graziano

Hat: Patricia Underwood  
DeminJacket: Closed  
Blouse: Closed  
Pants: Scotch & Soda  
Shoes: Laurence Dacade  
Necklace: RJ Graziano

## Katsumi Matsuo

[www.art-dept.com](http://www.art-dept.com)

# Art Department



Shirt: NO KA'OI  
Pants: NO KA'OI  
Shoes: Laurence Dacade

## Katsumi Matsuo

[www.art-dept.com](http://www.art-dept.com)

# Art Department



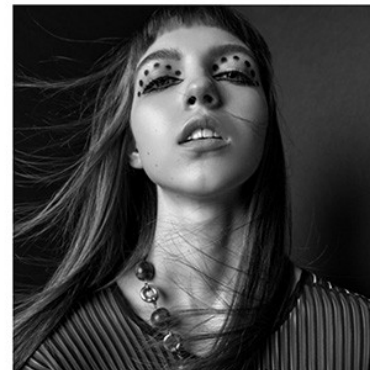
Hat: Patricia Underwood  
Dress: Tucker  
Shoes: Laurence Dacade  
Necklace: FJ Graziano

Hat: Patricia Underwood  
Blouse: Tucker  
Skirt: Tucker  
Shoes: Sacai

## Katsumi Matsuo

[www.art-dept.com](http://www.art-dept.com)

# Art Department



Katsumi Matsuo

[www.art-dept.com](http://www.art-dept.com)



# Art Department



Katsumi Matsuo

[www.art-dept.com](http://www.art-dept.com)

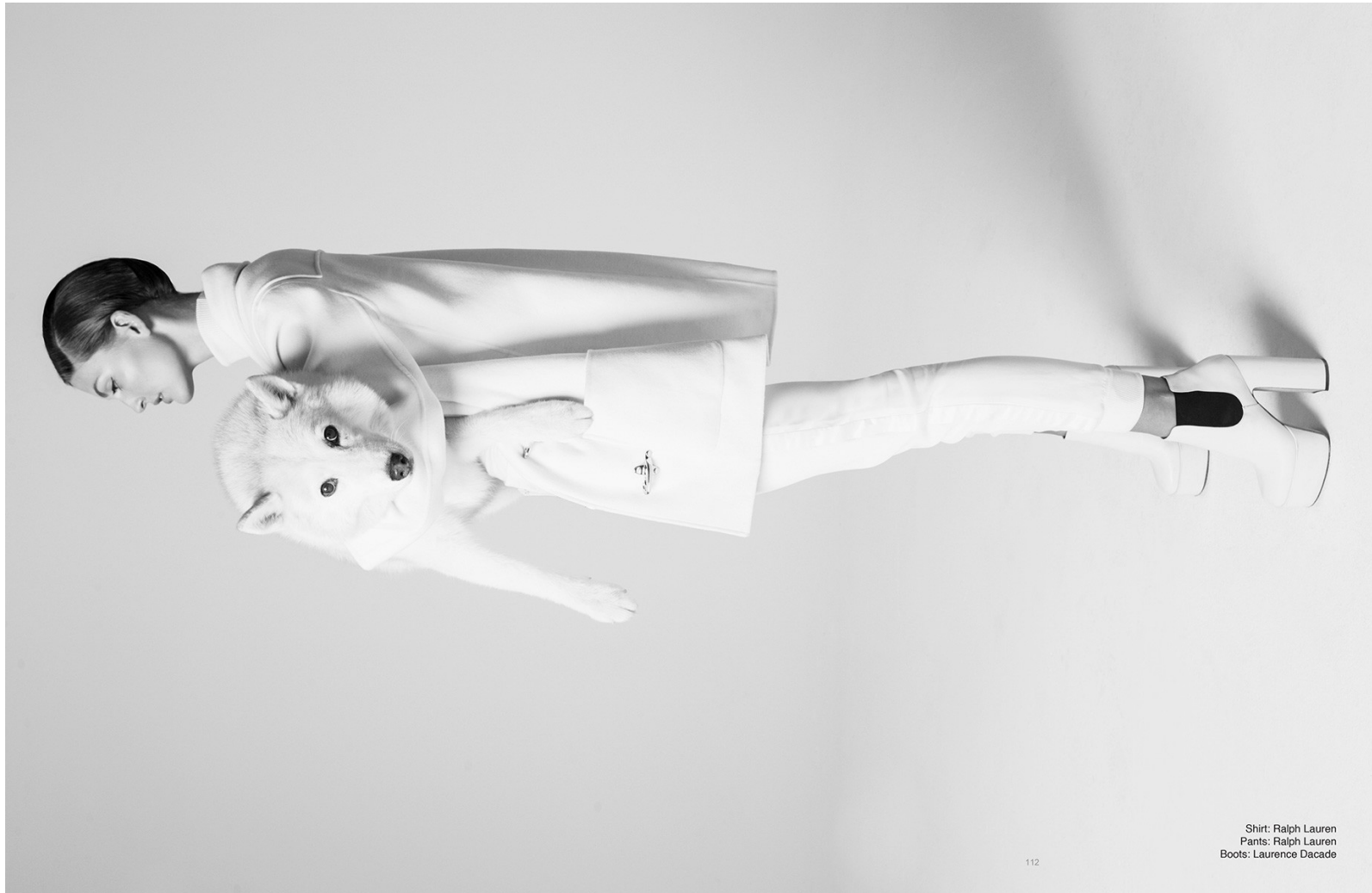
# Art Department



## Katsumi Matsuo

[www.art-dept.com](http://www.art-dept.com)

# Art Department



Katsumi Matsuo

[www.art-dept.com](http://www.art-dept.com)

# Art Department



Katsumi Matsuo

[www.art-dept.com](http://www.art-dept.com)

# Art Department



Dress: Thom Browne  
Shoes: Laurence Dacade

## Katsumi Matsuo

[www.art-dept.com](http://www.art-dept.com)

# Art Department

CREATIVE DIRECTORS

**DONALD LAWRENCE &  
TRACY WINGROVE**

FASHION DIRECTOR

**DONALD LAWRENCE**

HAIR

**KATSUMI MATSUO**

@ ART DEPARTMENT FOR BUMBLE & BUMBLE

MAKEUP

**ANGIE PARKER**

@ L'ATELIER NYC

DOGS

MAGIC AND MATA

OWNER - KELLY CUTRONE

NIKO, ACADIA & CAMMI

OWNER - JUNE KIM

SPECIAL THANKS TO DUNE STUDIOS

Shirt: Behno  
Pants: Behno  
Shoes: Sacai  
Bracelet: Roberto Calasanz  
Necklace: RJ Graziano



116

## Katsumi Matsuo

[www.art-dept.com](http://www.art-dept.com)

# Art Department



Katsumi Matsuo

[www.art-dept.com](http://www.art-dept.com)

# Art Department



*Шелковое платье,  
хлопковый тренч,  
аэз – Paco Rabanne;  
кольцо, жесткое золото, Atha*

*Фото: Karl & Kristof  
Стиль: KC Jones  
Прическа: Katsumi Matsuo @ Art Department  
с использованием Vumble & bumble  
Макияж: Campbell Ritchie @ Art Department  
с использованием Tom Ford  
Кастинг: Gillean Smith  
Ассистенты фотографа:  
Jacob Shogland, Olivier Simille  
Ассистенты стилиста:  
Rasica Sangoubadi, Tamika Duncan  
Модель: Aamirna Estevo @ The Society Management  
Благодарность – Root Studios BKN*

## Katsumi Matsuo

[www.art-dept.com](http://www.art-dept.com)



# Art Department



Katsumi Matsuo

[www.art-dept.com](http://www.art-dept.com)

# Art Department



Katsumi Matsuo

[www.art-dept.com](http://www.art-dept.com)

# Art Department



Katsumi Matsuo

[www.art-dept.com](http://www.art-dept.com)

# Art Department



Katsumi Matsuo

[www.art-dept.com](http://www.art-dept.com)

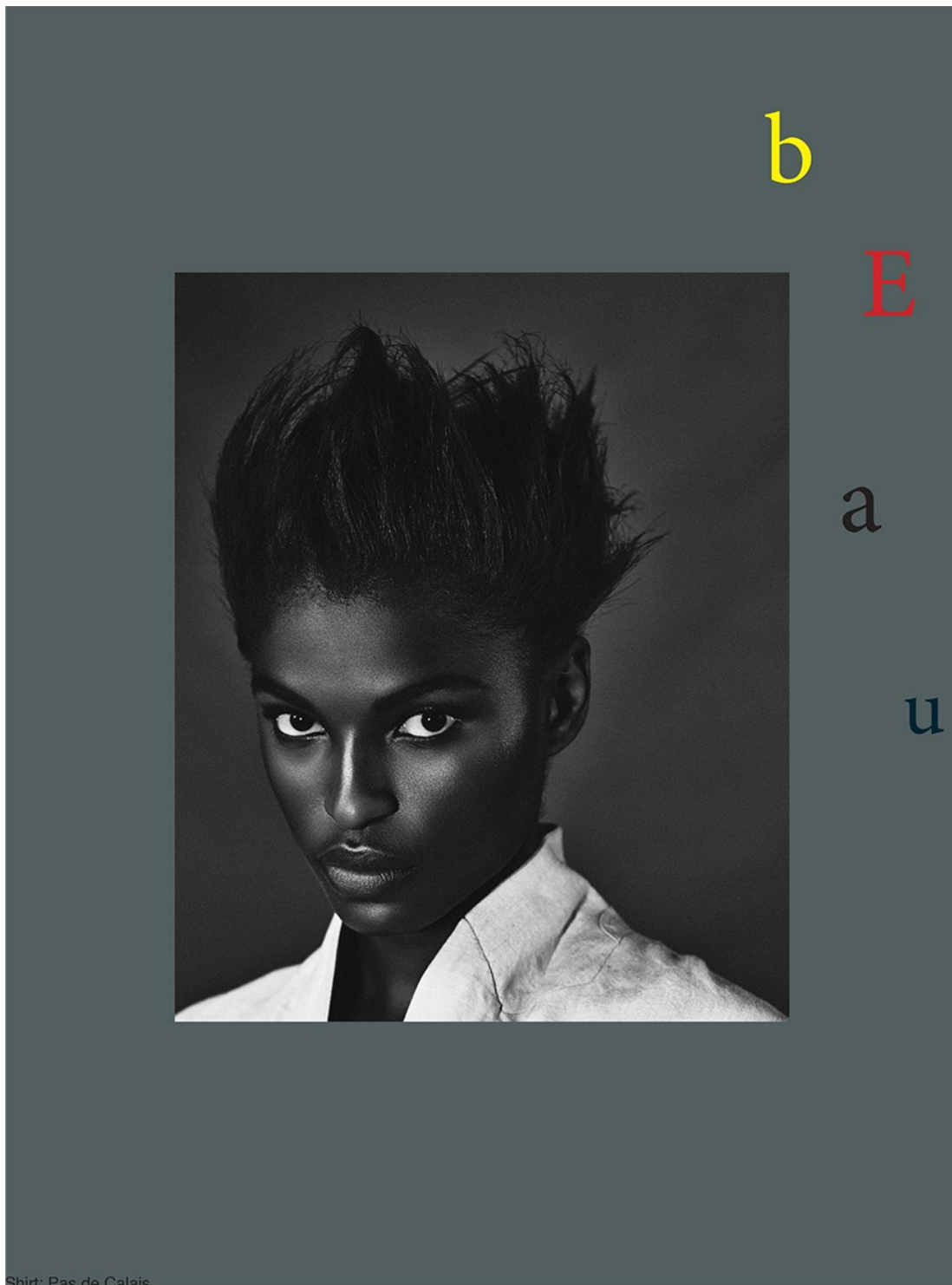
# Art Department



Katsumi Matsuo

[www.art-dept.com](http://www.art-dept.com)

# Art Department



Katsumi Matsuo

[www.art-dept.com](http://www.art-dept.com)

# Art Department



Katsumi Matsuo

[www.art-dept.com](http://www.art-dept.com)

# Art Department



Sweater: Pas de Calais

Sweater: Pa

## Katsumi Matsuo

[www.art-dept.com](http://www.art-dept.com)



# Art Department



Katsumi Matsuo

[www.art-dept.com](http://www.art-dept.com)

# Art Department



Makeup: MAC Cosmetics

154

Katsumi Matsuo

[www.art-dept.com](http://www.art-dept.com)

# Art Department



Katsumi Matsuo

[www.art-dept.com](http://www.art-dept.com)

# Art Department



Katsumi Matsuo

[www.art-dept.com](http://www.art-dept.com)

# Art Department



Katsumi Matsuo

[www.art-dept.com](http://www.art-dept.com)

# Art Department



Katsumi Matsuo

[www.art-dept.com](http://www.art-dept.com)

# Art Department



Katsumi Matsuo

[www.art-dept.com](http://www.art-dept.com)

# Art Department



COLORES OSCUROS,  
PRENDAS QUE NUNCA  
IMAGINASTE JUNTAS,  
COMBINACIONES  
CON CUERO... SON  
ELEMENTOS QUE  
REVELAN EL LADO  
CHIC MAS REBELDE  
DEL VERANO

Por Marie Grillasca  
Fotos: Richard Machado

# Lujo inesperado

## Katsumi Matsuo

[www.art-dept.com](http://www.art-dept.com)



# Art Department



Modelo: Mayara Rubik / Wilhelmina.  
Maquillaje: Agata Helena / agatahelena  
usando productos Dior y Kohgendo.  
Peinado: Katsumi Matsuo / Art department  
para bumble and bumble.  
Manicura: Ivana Anderson usando  
productos M-A-C.  
Estilista: Sofia Karvela @ The Wall Group.  
Asistente de moda: Meaghan Hartland.  
Asistente de fotografía: Nicolás Enrique.

## Katsumi Matsuo

[www.art-dept.com](http://www.art-dept.com)

# Art Department



Katsumi Matsuo

[www.art-dept.com](http://www.art-dept.com)

# Art Department



## UN TROPICO DIFERENTE

En esta página: ¿Cómo "inyectarle vitaminas" al sobrio negro? Con un estampado de frutas que resulta muy refrescante para el verano. Este look combina perfectamente con zapatos altos para dar la nota de glamour. El vestido es de Rachel Antonoff; la blusa de cuero, de Artisan de luxe, y el suéter con cuello de tortuga, de Ann Demeulemeester. Los zapatos son de Thomas Wylde.

## "LET IT ROCK"

En la siguiente página: Vestido ajustado y *ultrasexy* con detalles metálicos, de la colección preotoño 2016, de Thomas Wylde, y suéter de punto por encima. Deja que tus medias se asomen y libera esa roquera moderna que llevas dentro. El suéter es de IRO, las medias, de La Perla; y el collar y los brazaletes, de Erickson Beamon.

## Katsumi Matsuo

[www.art-dept.com](http://www.art-dept.com)

# Art Department



Katsumi Matsuo

[www.art-dept.com](http://www.art-dept.com)

# Art Department



Katsumi Matsuo

[www.art-dept.com](http://www.art-dept.com)

# Art Department



Katsumi Matsuo

[www.art-dept.com](http://www.art-dept.com)

# Art Department



Katsumi Matsuo

[www.art-dept.com](http://www.art-dept.com)

# Art Department



Katsumi Matsuo

[www.art-dept.com](http://www.art-dept.com)



# Art Department



Katsumi Matsuo

[www.art-dept.com](http://www.art-dept.com)

# Art Department



Katsumi Matsuo

[www.art-dept.com](http://www.art-dept.com)

# Art Department



Katsumi Matsuo

[www.art-dept.com](http://www.art-dept.com)

# Art Department



Katsumi Matsuo

[www.art-dept.com](http://www.art-dept.com)

# Art Department



Katsumi Matsuo

[www.art-dept.com](http://www.art-dept.com)

# Art Department



Katsumi Matsuo

[www.art-dept.com](http://www.art-dept.com)

# Art Department



Katsumi Matsuo

[www.art-dept.com](http://www.art-dept.com)

# Art Department



Portrait of Alana Zimmer, photography by Ryan Yoon, The GROUND magazine, 2014

## Katsumi Matsuo

[www.art-dept.com](http://www.art-dept.com)



# Art Department



Katsumi Matsuo

[www.art-dept.com](http://www.art-dept.com)

# Art Department



Katsumi Matsuo

[www.art-dept.com](http://www.art-dept.com)

# Art Department

ПАЛЬТО, MISSONI;  
БЛУЗКА, RICK OWENS;  
БРЮКИ, IRO.



## Мой рок-н-ролл

В лихие 90-е молодые люди и девушки подражали суровым рокерам. В наше же время ты можешь смело миксовать дерзкий гранж с богемными 70-ми. Не знаешь как? Вдохновляйся героиней нашей съемки.

Фото: Richard Machado  
Стиль: Sofia Karvela @The wall Group

## Katsumi Matsuo

[www.art-dept.com](http://www.art-dept.com)

# Art Department



БОМБЕР,  
**GROUNDZERO**;  
ДЖИНСЫ,  
**CHLOE**.

МОДЕЛЬ: ROOSMARIJN  
(WILHELMINA);  
ПРИЧЕСКА: KATSUMI  
MATSUO (BUMBLE AND  
BUMBLE);  
МАКИЯЖ: AGATA HELENA С  
ИСПОЛЬЗОВАНИЕМ DIOR И  
KONGENDO;  
МАНИКЮР: IVANA  
ANDERSON С ИСПОЛЬЗОВА-  
НИЕМ M.A.C COSMETICS;  
АССИСТЕНТ ФОТОГРАФА:  
NICOLAS ENRIQUE;  
АССИСТЕНТ СТИЛИСТА:  
MEAGHAN HARTLAND.

## Katsumi Matsuo

[www.art-dept.com](http://www.art-dept.com)

# Art Department



Katsumi Matsuo

[www.art-dept.com](http://www.art-dept.com)

# Art Department



НА ЭТОЙ СТРАНИЦЕ:  
ТОП, BABYGHOST;  
ПЛАТЬЕ, DELPHINE  
MANIVET;  
БОТИЛЬОНЫ, SAINT  
LAURENT;  
БРАСЛЕТЫ,  
СОБСТВЕННОСТЬ  
СТИЛИСТА.

НА СТРАНИЦЕ СПРАВА:  
КУРТКА, IRO;  
БОДИ, LA PERLA.

## Katsumi Matsuo

[www.art-dept.com](http://www.art-dept.com)

# Art Department



Katsumi Matsuo

[www.art-dept.com](http://www.art-dept.com)

# Art Department



Katsumi Matsuo

[www.art-dept.com](http://www.art-dept.com)



# Art Department



Katsumi Matsuo

[www.art-dept.com](http://www.art-dept.com)

# Art Department



Katsumi Matsuo

[www.art-dept.com](http://www.art-dept.com)

# Art Department



Katsumi Matsuo

[www.art-dept.com](http://www.art-dept.com)

# Art Department



Katsumi Matsuo

[www.art-dept.com](http://www.art-dept.com)

# Art Department



Katsumi Matsuo

[www.art-dept.com](http://www.art-dept.com)

# Art Department



Katsumi Matsuo

[www.art-dept.com](http://www.art-dept.com)

# Art Department



Katsumi Matsuo

[www.art-dept.com](http://www.art-dept.com)

# Art Department



Katsumi Matsuo

[www.art-dept.com](http://www.art-dept.com)



# Art Department



Katsumi Matsuo

[www.art-dept.com](http://www.art-dept.com)

# Art Department



Katsumi Matsuo

[www.art-dept.com](http://www.art-dept.com)

# Art Department



Katsumi Matsuo

[www.art-dept.com](http://www.art-dept.com)

# Art Department



Katsumi Matsuo

[www.art-dept.com](http://www.art-dept.com)

# Art Department



Katsumi Matsuo

[www.art-dept.com](http://www.art-dept.com)

# Art Department



Katsumi Matsuo

[www.art-dept.com](http://www.art-dept.com)

# Art Department



Katsumi Matsuo

[www.art-dept.com](http://www.art-dept.com)

# Art Department



Katsumi Matsuo

[www.art-dept.com](http://www.art-dept.com)



# Art Department



Katsumi Matsuo

[www.art-dept.com](http://www.art-dept.com)

# Art Department



**W**

WEDNESDAY, APRIL 1, 2015 ■ \$3.00 ■

## Spanish Class

The Iberian Peninsula's rich fashion heritage — high waistlines, decorative ruffles and lacework and jackets with swagger — inspired fall collections layered with Old World romance and modern attitude. Here, Simone Rocha's silk-velvet jacket, silk slip and viscose and lace skirt. For more, see pages 4 and 5.

Katsumi Matsuo

[www.art-dept.com](http://www.art-dept.com)

# Art Department



Katsumi Matsuo

[www.art-dept.com](http://www.art-dept.com)

# Art Department



Katsumi Matsuo

[www.art-dept.com](http://www.art-dept.com)

# Art Department



Katsumi Matsuo

[www.art-dept.com](http://www.art-dept.com)

# Art Department

## ELLE МОДА

ИСТОРИИ ТЕНДЕНЦИИ ОБРАЗЫ СТОП-КАДРЫ ЭМОЦИИ



Katsumi Matsuo

[www.art-dept.com](http://www.art-dept.com)

# Art Department



Пальто, Oscar de la Renta;  
блуза, Dsquared2;  
кольца и колье, Michael Kors

## Katsumi Matsuo

[www.art-dept.com](http://www.art-dept.com)

# Art Department



Katsumi Matsuo

[www.art-dept.com](http://www.art-dept.com)



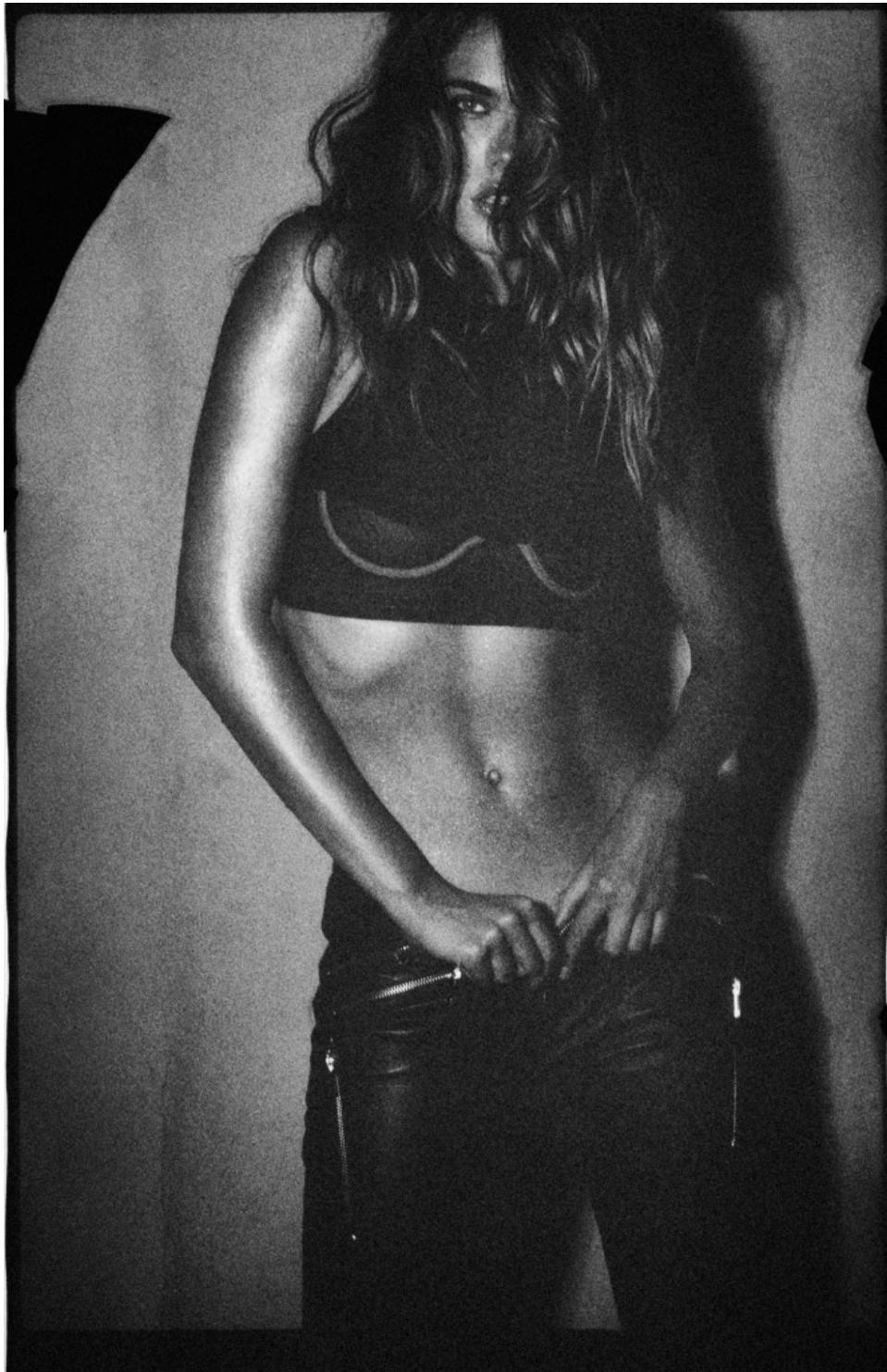
# Art Department



Katsumi Matsuo

[www.art-dept.com](http://www.art-dept.com)

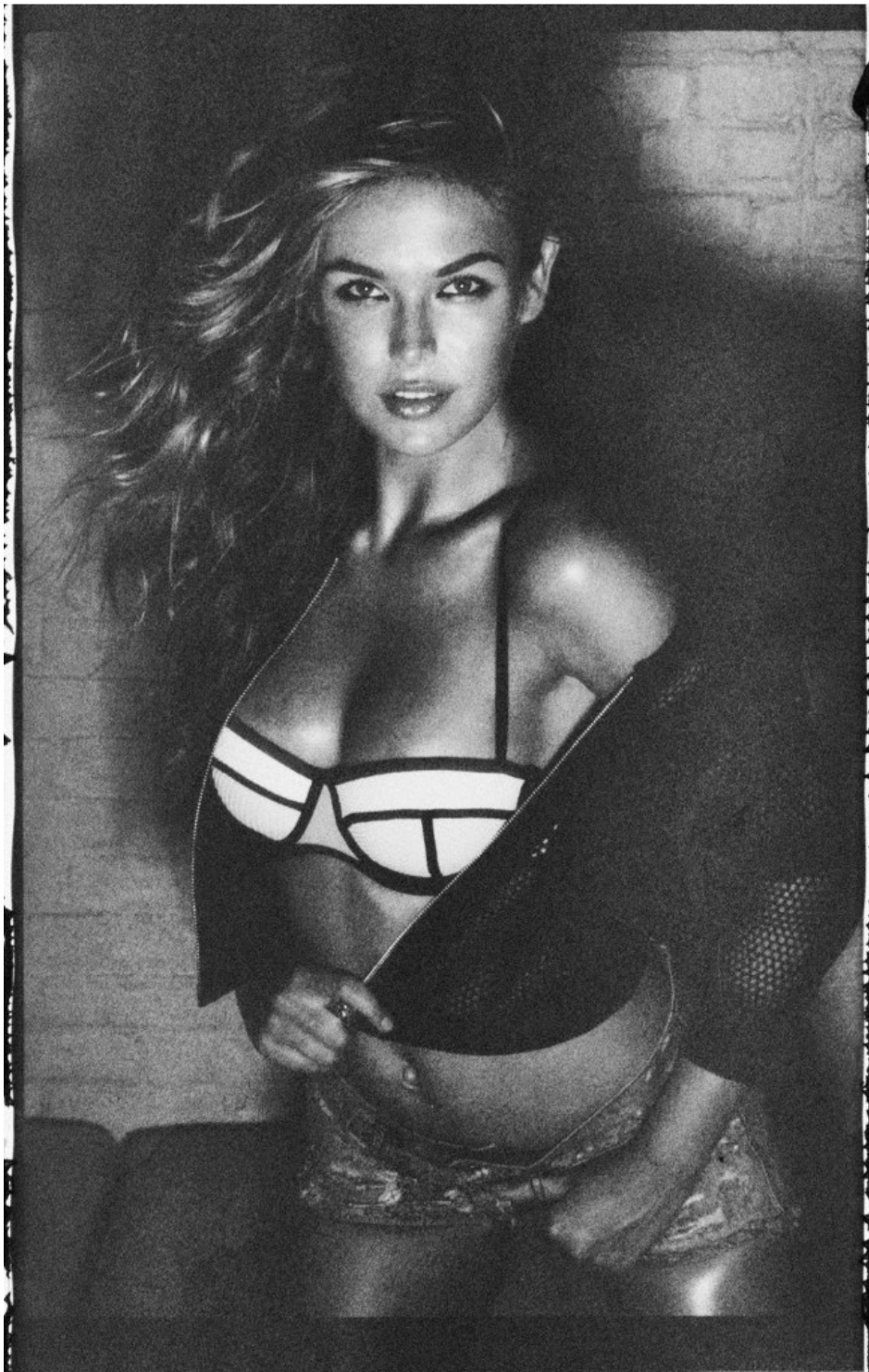
# Art Department



Katsumi Matsuo

[www.art-dept.com](http://www.art-dept.com)

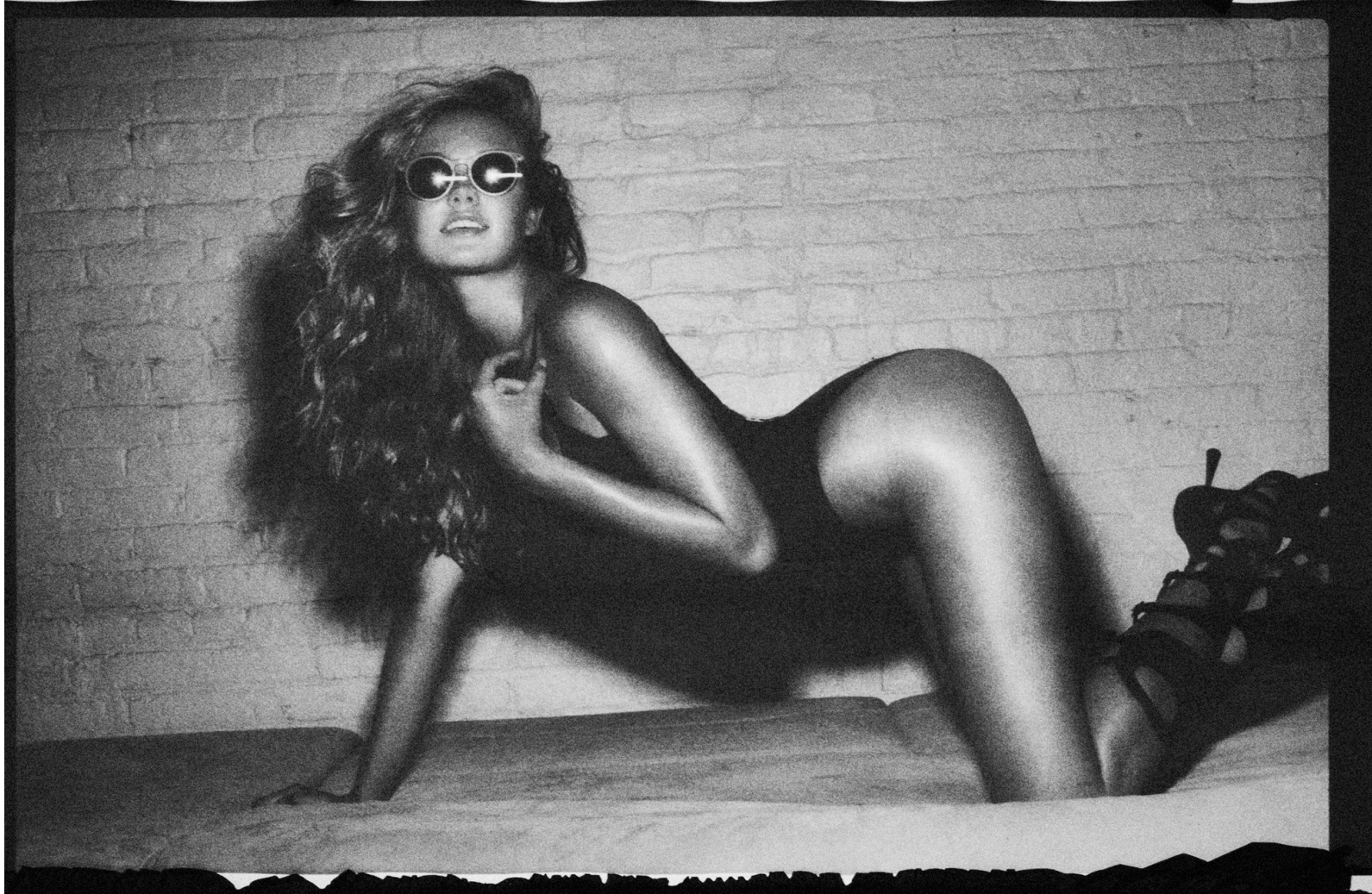
# Art Department



Katsumi Matsuo

[www.art-dept.com](http://www.art-dept.com)

# Art Department



Katsumi Matsuo

[www.art-dept.com](http://www.art-dept.com)

# Art Department



Katsumi Matsuo

[www.art-dept.com](http://www.art-dept.com)

# Art Department



Katsumi Matsuo

[www.art-dept.com](http://www.art-dept.com)

# Art Department



## Katsumi Matsuo

[www.art-dept.com](http://www.art-dept.com)

# Art Department



Katsumi Matsuo

[www.art-dept.com](http://www.art-dept.com)



# Art Department



Katsumi Matsuo

[www.art-dept.com](http://www.art-dept.com)

# Art Department



Katsumi Matsuo

[www.art-dept.com](http://www.art-dept.com)

# Art Department



Katsumi Matsuo

[www.art-dept.com](http://www.art-dept.com)

# Art Department



Katsumi Matsuo

[www.art-dept.com](http://www.art-dept.com)

# Art Department



Katsumi Matsuo

[www.art-dept.com](http://www.art-dept.com)

# Art Department



Katsumi Matsuo

[www.art-dept.com](http://www.art-dept.com)

# Art Department

MARZO 2015

# LIVERPOOL®

MARZO 2015

**TREND REPORT**  
*Lo último de las pasarelas (p. 64)*

**BÁSICOS PARA EL**  
**BERMUDAS, LENTES Y SOMBREROS**

LIVERPOOL

**¡ESPECIAL TRAJES DE BAÑO!**  
*Elige el mejor según tu cuerpo*

**DECO:**  
*acentos del mar en tu casa*

Fashion Fest primavera / verano

**Irina Shayk**  
**FASHION FEST**  
**PRIMAVERA/**  
**VERANO**

38.00 PESOS



Edición



## Katsumi Matsuo

[www.art-dept.com](http://www.art-dept.com)

# Art Department



## BEAUTY

- piel extrafirme
- la protección perfecta
- renueva tu kit de maquillaje

Katsumi Matsuo

[www.art-dept.com](http://www.art-dept.com)



# Art Department

“En 10 años quiero estar saludable, feliz y llena de amor. Lo demás no importa, amo mi trabajo pero no vivo para él”.



JUMPSUIT  
THAT'S IT  
\$449  
SKU 1029039911

## Katsumi Matsuo

[www.art-dept.com](http://www.art-dept.com)

# Art Department



Katsumi Matsuo

[www.art-dept.com](http://www.art-dept.com)

# Art Department



Katsumi Matsuo

[www.art-dept.com](http://www.art-dept.com)

# Art Department



Katsumi Matsuo

[www.art-dept.com](http://www.art-dept.com)

# Art Department



GLAM  
PARISINO

Vestido con paillettes  
en tres tonos y  
perlas aplicadas,  
de Ashish (2.050 €).

Katsumi Matsuo

[www.art-dept.com](http://www.art-dept.com)

# Art Department



Katsumi Matsuo

[www.art-dept.com](http://www.art-dept.com)

# Art Department



## Katsumi Matsuo

[www.art-dept.com](http://www.art-dept.com)

# Art Department



Katsumi Matsuo

[www.art-dept.com](http://www.art-dept.com)



# Art Department



Katsumi Matsuo

[www.art-dept.com](http://www.art-dept.com)

# Art Department



Katsumi Matsuo

[www.art-dept.com](http://www.art-dept.com)

# Art Department



Katsumi Matsuo

[www.art-dept.com](http://www.art-dept.com)

# Art Department



GOLD CREAM EYESHADOW  
MAKEUPFOREVER,  
LIPSTICK MAC,  
THICKENING SPRAY  
BUMBLE AND BUMBLE

HAIR KATSUMI MATSUI  
USING ORIBE,  
MAKEUP MANAMI ISHIKAWA,  
MODEL ALICE CORNISH  
© SUPREME MANAGEMENT,  
CREATIVE DIRECTION  
& PRODUCTION  
ARTISTIC CUBE INC.

Katsumi Matsuo

[www.art-dept.com](http://www.art-dept.com)

# Art Department



Katsumi Matsuo

[www.art-dept.com](http://www.art-dept.com)

# Art Department



Katsumi Matsuo

[www.art-dept.com](http://www.art-dept.com)

# Art Department



Katsumi Matsuo

[www.art-dept.com](http://www.art-dept.com)

# Art Department



Katsumi Matsuo

[www.art-dept.com](http://www.art-dept.com)



# Art Department



Turtleneck and coat: Issey Miyake

Set design: Tracy Wingrove  
Make up artist: Yuko Mizuno@ www.Ronarepresents.com  
Hairstylist: Katsumi@ www.andersonhokins.com  
Manicurist: Cassandra Lamar for Ramal Nails  
Model: Alexa Yudin  
Stylist and set designer assistant: Karolina Brock

## Katsumi Matsuo

[www.art-dept.com](http://www.art-dept.com)

# Art Department



Katsumi Matsuo

[www.art-dept.com](http://www.art-dept.com)

# Art Department

Jewelry: Alexis Bittar

Dress and poncho: Issey Miyake

Shoes:



## Katsumi Matsuo

[www.art-dept.com](http://www.art-dept.com)

# Art Department



Necklace: Alexis Bittar  
Turtleneck, tank top, dress  
and pants: Issey Miyake

## Katsumi Matsuo

[www.art-dept.com](http://www.art-dept.com)

# Art Department



Katsumi Matsuo

[www.art-dept.com](http://www.art-dept.com)

# Art Department



Katsumi Matsuo

[www.art-dept.com](http://www.art-dept.com)

# Art Department



Katsumi Matsuo

[www.art-dept.com](http://www.art-dept.com)

# Art Department



Katsumi Matsuo

[www.art-dept.com](http://www.art-dept.com)



# Art Department



Katsumi Matsuo

[www.art-dept.com](http://www.art-dept.com)

# Art Department



Katsumi Matsuo

[www.art-dept.com](http://www.art-dept.com)

# Art Department



Katsumi Matsuo

[www.art-dept.com](http://www.art-dept.com)

# Art Department



Katsumi Matsuo

[www.art-dept.com](http://www.art-dept.com)

# Art Department



Katsumi Matsuo

[www.art-dept.com](http://www.art-dept.com)

# Art Department

Dress- Philosophy di Alberta Ferretti  
Shoes- Laurence Dacade  
Bangles- Alexis Bittar



## Katsumi Matsuo

[www.art-dept.com](http://www.art-dept.com)

# Art Department



## Katsumi Matsuo

[www.art-dept.com](http://www.art-dept.com)

# Art Department



NO TEMAS EN LLEVAR LOS  
ESTAMPADOS AL EXTREMO.  
EN ESTE CASO, MÁS SIEMPRE  
SERÁ MEJOR.

FOTOGRAFÍA: HAO ZENG  
ESTILISMO: ANNA KATSANIS  
EDITORIA DE MODA: CYNTHIA GRAJALES

*Energía*  
**REMASTERIZADA**

Katsumi Matsuo

[www.art-dept.com](http://www.art-dept.com)



# Art Department



Katsumi Matsuo

[www.art-dept.com](http://www.art-dept.com)

# Art Department



Katsumi Matsuo

[www.art-dept.com](http://www.art-dept.com)

# Art Department



Katsumi Matsuo

[www.art-dept.com](http://www.art-dept.com)

# Art Department



Nude satin bra by Shelly  
Steffens, Black shearling  
wool sleeveless cardigan  
and Grey cable knit sleeveless  
cardigan both by Hetta  
Bimbolinski, Black cotton high  
waisted brief by Wunderroll,  
Black tights by Falke, Grey  
leather thigh-high boots w/  
straps by Candela, Gold ar  
gumental beaded necklace  
by Circa Sixty Three, Black  
lens rock necklace and fea  
ther earrings by Denika, All  
bracelets by Robert Lee Mon  
ro, Cigarette holder by Marcus.

## Katsumi Matsuo

[www.art-dept.com](http://www.art-dept.com)

# Art Department



Katsumi Matsuo

[www.art-dept.com](http://www.art-dept.com)

# Art Department



Katsumi Matsuo

[www.art-dept.com](http://www.art-dept.com)

# Art Department



Katsumi Matsuo

[www.art-dept.com](http://www.art-dept.com)

# Art Department



Katsumi Matsuo

[www.art-dept.com](http://www.art-dept.com)



# Art Department



Katsumi Matsuo

[www.art-dept.com](http://www.art-dept.com)

# Art Department



Katsumi Matsuo

[www.art-dept.com](http://www.art-dept.com)

# Art Department



Katsumi Matsuo

[www.art-dept.com](http://www.art-dept.com)

# Art Department



Katsumi Matsuo

[www.art-dept.com](http://www.art-dept.com)

# Art Department



Katsumi Matsuo

[www.art-dept.com](http://www.art-dept.com)

# Art Department



Katsumi Matsuo

[www.art-dept.com](http://www.art-dept.com)

# Art Department



Katsumi Matsuo

[www.art-dept.com](http://www.art-dept.com)

# Art Department



Katsumi Matsuo

[www.art-dept.com](http://www.art-dept.com)



# Art Department



Katsumi Matsuo

[www.art-dept.com](http://www.art-dept.com)

# Art Department



Katsumi Matsuo

[www.art-dept.com](http://www.art-dept.com)

# Art Department



Katsumi Matsuo

[www.art-dept.com](http://www.art-dept.com)

# Art Department



Katsumi Matsuo

[www.art-dept.com](http://www.art-dept.com)

# Art Department



Katsumi Matsuo

[www.art-dept.com](http://www.art-dept.com)

# Art Department



Katsumi Matsuo

[www.art-dept.com](http://www.art-dept.com)

# Art Department



## Katsumi Matsuo

[www.art-dept.com](http://www.art-dept.com)

# Art Department



Katsumi Matsuo

[www.art-dept.com](http://www.art-dept.com)



# Art Department



Katsumi Matsuo

[www.art-dept.com](http://www.art-dept.com)

# Art Department



Katsumi Matsuo

[www.art-dept.com](http://www.art-dept.com)

# Art Department



Katsumi Matsuo

[www.art-dept.com](http://www.art-dept.com)

# Art Department



Katsumi Matsuo

[www.art-dept.com](http://www.art-dept.com)

# Art Department



Katsumi Matsuo

[www.art-dept.com](http://www.art-dept.com)

# Art Department



Katsumi Matsuo

[www.art-dept.com](http://www.art-dept.com)

# Art Department



Katsumi Matsuo

[www.art-dept.com](http://www.art-dept.com)

# Art Department



Katsumi Matsuo

[www.art-dept.com](http://www.art-dept.com)



# Art Department



Katsumi Matsuo

[www.art-dept.com](http://www.art-dept.com)

# Art Department



BEAUTY

DOWN  
UMBER

Worn with completely bare skin and lids, brown '90s throwback lips look just as alluring today as they did on Winona Ryder as Lelaina Pierce in *Reality Bites*. Makeup artist Misha Shahzada created this creamy chocolate hue by coating lips with balm for a hint of shine before tracing with M.A.C Eye Pencil in Coffee and applying NYX Matte Lipstick in Maiton. "Take pleasure in the details," as Ethan Hawke's bad-boy slacker, Troy Dyer, once chided Lelaina. Or for one-step cocoa perfection, try a swipe of Giorgio Armani Rouge Ecstasy in Caffè. Pretty rad.

**THIS MONTH IN BEAUTY:** Your healthiest skin ever **page 250** // Expand your beauty investment portfolio **page 252** // Scarlett Johansson's blockbuster beauty hits **page 260** // Plan your dream spa getaway **page 264**

Like a healthy life, a sexy, well-matched lip should be a happy accident. Be kinder to and for your hair, please.

## Katsumi Matsuo

www.art-dept.com

# Art Department

## ACCESSORIES

### MASTERPIECE THEATER

Tiffany & Co. design director Francesca Amfitheatrof—seventh in the storied American jewelry house's 177-year history—joins a long tradition of industry legends including collaborators Jean Schlumberger and Paloma Picasso. The art-deco-inspired Tiffany Masterpieces collection, which Amfitheatrof oversaw, pays homage to the firm's roots with a dazzlingly fresh take on 1920s design: gleaming black lacquer topped with a generous sprinkling of diamonds, gemstone tassel necklaces, and cocktail rings with rows of cabochon stones—just the thing for modern day Daisy Buchanans.

*Diamond and carriage pink sapphire, diamond, lacquer, and rose gold ring; lacquer, pearl, diamond, and white gold ring; sapphire, diamond, and white gold ring, all TIFFANY & CO., prices on request, and \$600-\$1.200. Design jacket, JANE, \$279, collection at Saks Fifth Avenue stores nationwide. For details, see Shopping Guide.*

Image Copyright © 2014 by Victoria Beckham. All the Authors. Models: @KatieLis, @KatieLis, and @KatieLis. Jewelry by Tiffany & Co. Photo by The Photographers' Collective. Hair by @The Hair Stylist. Makeup by @The Makeup Artist.

## Katsumi Matsuo

[www.art-dept.com](http://www.art-dept.com)

# Art Department



## Η ΣΚΟΤΕΙΝΗ ΓΟΗΤΕΙΑ

Οι make-up artists αγγίζουν τα σημεία του προσώπου με βελούδινες και ιριδίζουσες υπές αλλά και αποχρώσεις που παίζουν με το φως και τη σκιά. Τα έντονα μάτια γίνονται ο κεντρικός άξονας γύρω από τον οποίο σχεδιάζεται το look. Το smoky eyes αποκτά μια νέα μορφή αφού παρουσιάζεται πιο «καθαρό», με τη σκούρα σκιά να παραμένει σταθερά στο πάνω βλέφαρο και το περίγραμμα με μολύβι στο κάτω χιρσί, όμως, να αφήνει τη μουντζούρα που συνηθίσαμε να βλέπουμε τις τελευταίες σεζόν. Επανερχεται το χρωματιστό μολύβι ματιών με τη γραμμή να ξεκινάει από την εσωτερική γωνία του ματιού και να προχωράει μέχρι την εξωτερική. Τα ζυγωματικά αποκτούν και πάλι χρώμα και δύναμη με τις γωνίες τους να κυριαρχούν στο πρόσωπο. Το look ολοκληρώνεται με nude ή με κόκκινο της Βουργουνδίας στα χείλη. Για τις ηρωικές ώρες προτιμάμε το nude, για το τέλος της μέρας παίζουμε με πιο σκούρες αποχρώσεις.

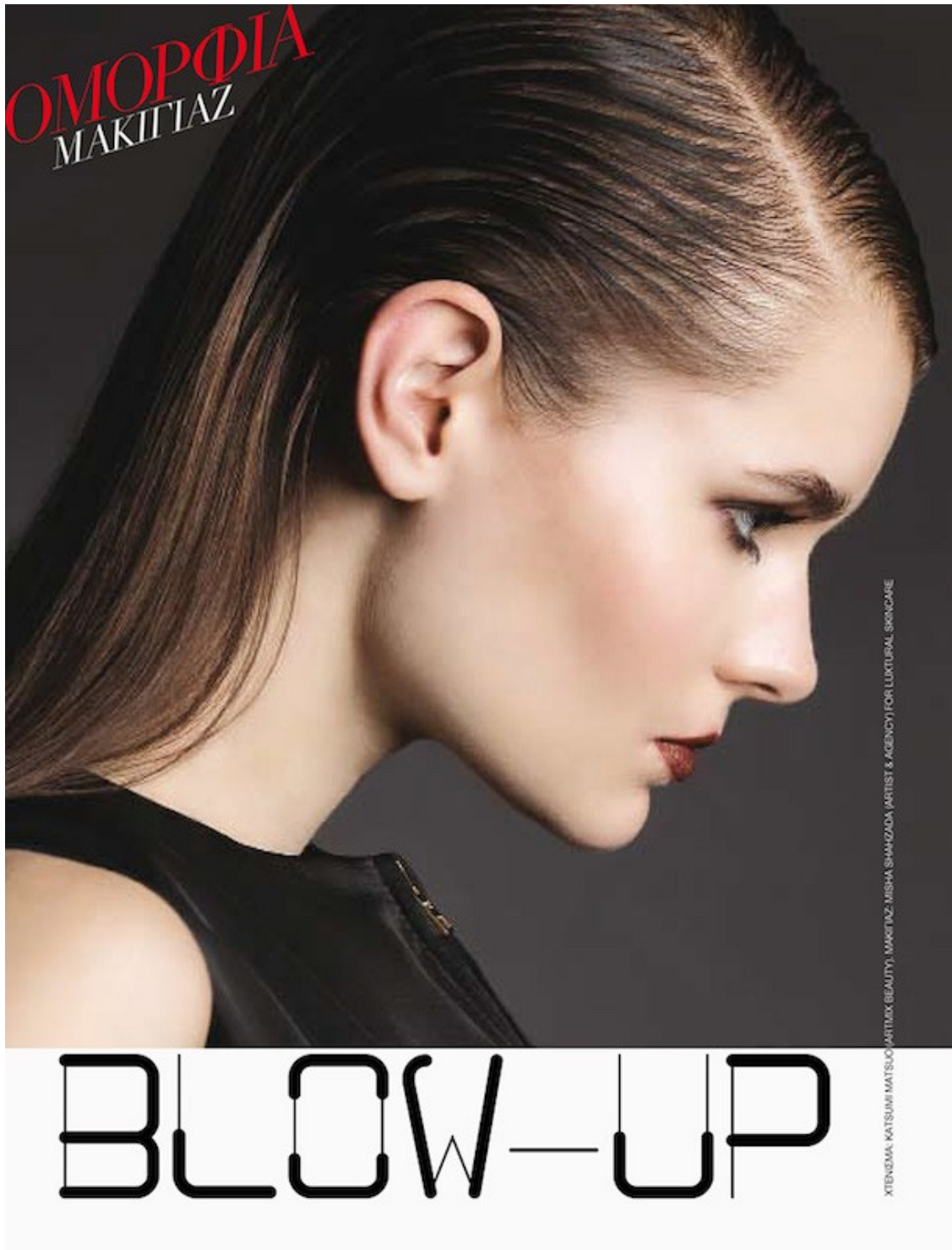
**ΟΠΩΣ ΕΝΑΣ ΦΩΤΟΓΡΑΦΟΣ ΚΑΝΕΙ ΖΟΥΜ ΣΤΑ ΠΡΟΣΩΠΑ ΤΩΝ  
ΜΟΝΤΕΛΩΝ ΤΟΥ, ΤΟ ΜΑΚΙΓΙΑΖ ΤΟΥ ΧΕΙΜΩΝΑ ΒΑΖΕΙ ΠΙΝΕΛΙΕΣ  
ΣΤΙΣ ΛΕΙΤΟΜΕΡΕΙΕΣ. ΑΠΟ ΤΗ ΔΗΜΗΤΡΑ ΓΚΑΣΙΑΜΗ  
ΦΩΤΟ: RICHARD MACHADO**

17/mc

## Katsumi Matsuo

[www.art-dept.com](http://www.art-dept.com)

# Art Department



Katsumi Matsuo

[www.art-dept.com](http://www.art-dept.com)

# Art Department

Jacket: Jean-Paul Gaultier  
Pants: Jean-Paul Gaultier  
Earrings: Alexis Bittar



Katsumi Matsuo

[www.art-dept.com](http://www.art-dept.com)

# Art Department



Katsumi Matsuo

[www.art-dept.com](http://www.art-dept.com)

# Art Department



Katsumi Matsuo

[www.art-dept.com](http://www.art-dept.com)



# Art Department



Katsumi Matsuo

[www.art-dept.com](http://www.art-dept.com)

# Art Department



Katsumi Matsuo

[www.art-dept.com](http://www.art-dept.com)

# Art Department



Katsumi Matsuo

[www.art-dept.com](http://www.art-dept.com)

# Art Department



Katsumi Matsuo

[www.art-dept.com](http://www.art-dept.com)

# Art Department



Katsumi Matsuo

[www.art-dept.com](http://www.art-dept.com)

# Art Department



Katsumi Matsuo

[www.art-dept.com](http://www.art-dept.com)

# Art Department



Katsumi Matsuo

[www.art-dept.com](http://www.art-dept.com)

# Art Department



Katsumi Matsuo

[www.art-dept.com](http://www.art-dept.com)



# Art Department



Katsumi Matsuo

[www.art-dept.com](http://www.art-dept.com)

# Art Department



Katsumi Matsuo

[www.art-dept.com](http://www.art-dept.com)

# Art Department



Katsumi Matsuo

[www.art-dept.com](http://www.art-dept.com)

# Art Department



Katsumi Matsuo

[www.art-dept.com](http://www.art-dept.com)

# Art Department



Katsumi Matsuo

[www.art-dept.com](http://www.art-dept.com)

# Art Department



Katsumi Matsuo

[www.art-dept.com](http://www.art-dept.com)

# Art Department



Katsumi Matsuo

[www.art-dept.com](http://www.art-dept.com)

# Art Department



Katsumi Matsuo

[www.art-dept.com](http://www.art-dept.com)



# Art Department



Katsumi Matsuo

[www.art-dept.com](http://www.art-dept.com)

# Art Department



Katsumi Matsuo

[www.art-dept.com](http://www.art-dept.com)

# Art Department



Katsumi Matsuo

[www.art-dept.com](http://www.art-dept.com)

# Art Department



Katsumi Matsuo

[www.art-dept.com](http://www.art-dept.com)

# Art Department



Katsumi Matsuo

[www.art-dept.com](http://www.art-dept.com)

# Art Department



Katsumi Matsuo

[www.art-dept.com](http://www.art-dept.com)

# Art Department



Katsumi Matsuo

[www.art-dept.com](http://www.art-dept.com)

# Art Department



Katsumi Matsuo

[www.art-dept.com](http://www.art-dept.com)