

# Art Department



Abrigo, pantalón  
y zapatos.  
**Dolce & Gabbana**

## THE ART OF SOLITUDE

Realización **Fernando Carrillo**  
Fotos **Jacob + Carol**

## Nicolas Eldin

[www.art-dept.com](http://www.art-dept.com)

# Art Department



Nicolas Eldin

[www.art-dept.com](http://www.art-dept.com)

# Art Department



Nicolas Eldin

[www.art-dept.com](http://www.art-dept.com)

# Art Department



Nicolas Eldin

[www.art-dept.com](http://www.art-dept.com)

# Art Department



---

Camisa de cuero  
y pantalón.  
**Dolce & Gabbana**

MODELO:  
**IVAN VUCKOVIC**  
@ DNA MODELS  
GROOMER: **NICOLAS**  
**ELDIN @ ART**  
**DEPARTMENT**  
COORDINACIÓN DE  
MODA: **EMILY DRAKE**  
ASISTENTE DE MODA:  
**LEXI LANG**  
**JACOB + CARROL @**  
**THE GALLERY AGENCY**

## Nicolas Eldin

[www.art-dept.com](http://www.art-dept.com)

# Art Department



Nicolas Eldin

[www.art-dept.com](http://www.art-dept.com)

# Art Department



Nicolas Eldin

[www.art-dept.com](http://www.art-dept.com)

# Art Department



Nicolas Eldin

[www.art-dept.com](http://www.art-dept.com)



# Art Department



---

Suéter, bufanda,  
chamarra, pantalón  
y botas. **Dolce  
& Gabbana**

Nicolas Eldin

[www.art-dept.com](http://www.art-dept.com)

# Art Department



Nicolas Eldin

[www.art-dept.com](http://www.art-dept.com)

# Art Department



Nicolas Eldin

[www.art-dept.com](http://www.art-dept.com)

# Art Department



Nicolas Eldin

[www.art-dept.com](http://www.art-dept.com)

# Art Department



Nicolas Eldin

[www.art-dept.com](http://www.art-dept.com)

# Art Department



Nicolas Eldin

[www.art-dept.com](http://www.art-dept.com)

# Art Department



Nicolas Eldin

[www.art-dept.com](http://www.art-dept.com)

# Art Department



Nicolas Eldin

[www.art-dept.com](http://www.art-dept.com)



# Art Department



Nicolas Eldin

[www.art-dept.com](http://www.art-dept.com)

# Art Department



Nicolas Eldin

[www.art-dept.com](http://www.art-dept.com)

# Art Department



Nicolas Eldin

[www.art-dept.com](http://www.art-dept.com)

# Art Department



Nicolas Eldin

[www.art-dept.com](http://www.art-dept.com)

# Art Department



Nicolas Eldin

[www.art-dept.com](http://www.art-dept.com)

# Art Department



Nicolas Eldin

[www.art-dept.com](http://www.art-dept.com)

# Art Department

ESSENTIAL HOMME



MALEFASHIONTRENDS.COM

## Nicolas Eldin

[www.art-dept.com](http://www.art-dept.com)

# Art Department



Nicolas Eldin

[www.art-dept.com](http://www.art-dept.com)



# Art Department



ON LEFT  
Jacket by **GIVENCHY BY  
RICCARDO TISCI**  
Shirt and overalls by **ANTONIO  
MARRAS**

IN MIDDLE:  
Coat by **ETRO**  
Skirt by **UMA WANG**  
Stylist's own face body-suit

ON RIGHT:  
Blazer, pants, and belt by  
**BALMAIN**  
Cardigan by **ACNE STUDIOS**

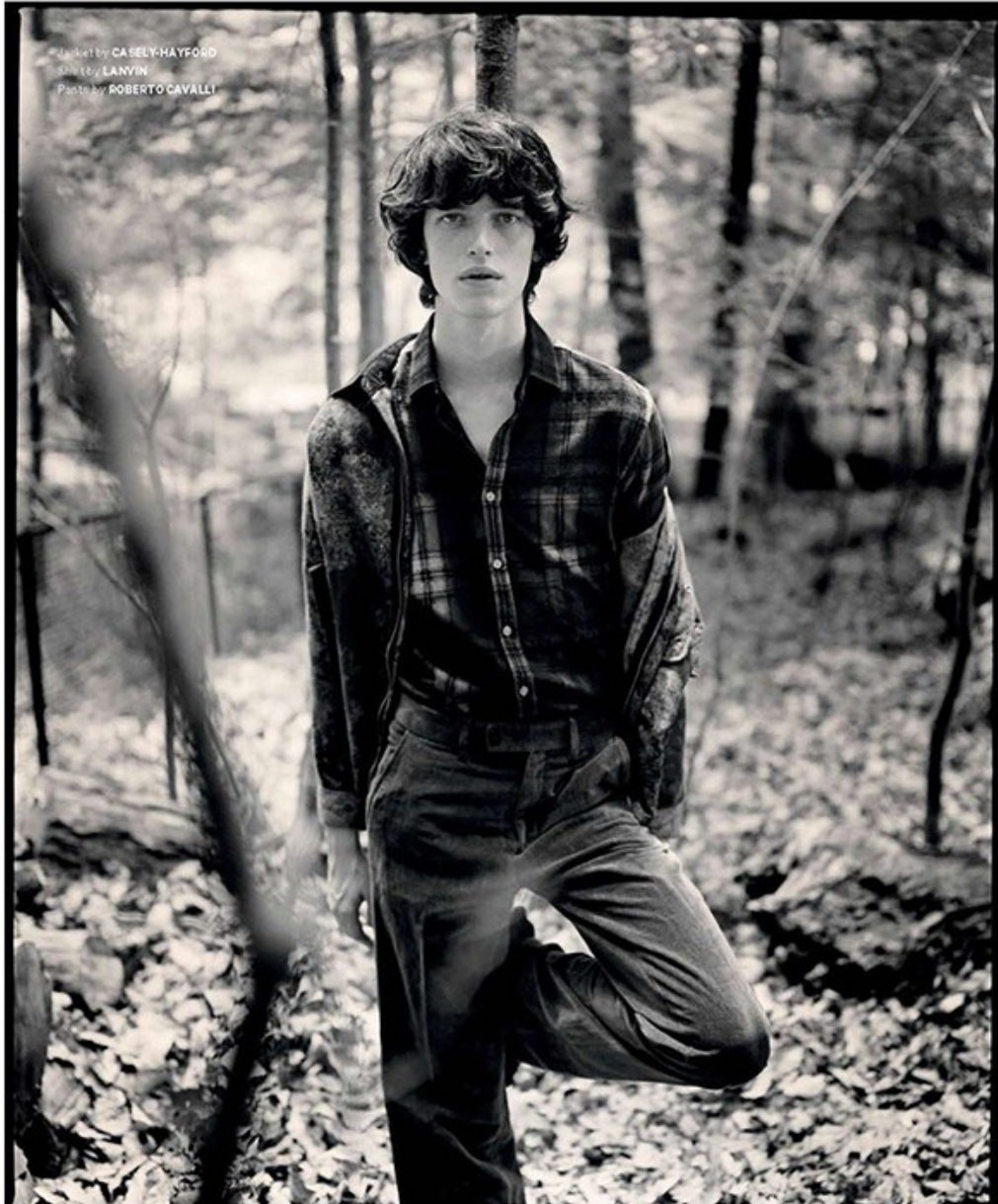
MALEFASHIONTRENDS.COM

## Nicolas Eldin

[www.art-dept.com](http://www.art-dept.com)

# Art Department

ABSENT DAZE



MALEFASHIONTRENDS.COM

## Nicolas Eldin

[www.art-dept.com](http://www.art-dept.com)

# Art Department

ESSENTIAL HOMME



MALEFASHIONTRENDS.COM

## Nicolas Eldin

[www.art-dept.com](http://www.art-dept.com)

# Art Department

ABSENT DAZE



MALEFASHIONTRENDS.COM

## Nicolas Eldin

[www.art-dept.com](http://www.art-dept.com)

# Art Department



Nicolas Eldin

[www.art-dept.com](http://www.art-dept.com)

# Art Department



## Portfolio

The main entrance lobby will also serve as a public gallery, offering nearly 1,000 sq ft of free-entry exhibition space.

Callum R wears coat, £1,690; jacket, £1,900; shirt, £440; trousers, £480, all by Dior Homme. Socks (worn throughout), £14, by Pantherele. Shoes, £498, by Ludwig Reiter.

Adam wears jacket, £1,680; shirt, £550; trousers £400, all by Saint Laurent by Hedi Slimane. Tie, £75, by Richard James.

Shoes, £95, by Church's. Callum W wears suit £1,890; waistcoat, £435; shirt, £200, all by Gucci. Shoes, £95, by Church's.

## Nicolas Eldin

[www.art-dept.com](http://www.art-dept.com)

# Art Department



Nicolas Eldin

[www.art-dept.com](http://www.art-dept.com)

# Art Department



## Portfolio

An internal stairwell allows visitors to flow freely between the eight storeys, or they can use one of four distinctive lifts conceived by artist Richard Artschwager

Suit, £450; shirt, £80, both by Tommy Hilfiger.  
Tie, £75, by Richard James.  
Shoes, £385, by Church's

## Nicolas Eldin

[www.art-dept.com](http://www.art-dept.com)



# Art Department



Nicolas Eldin

[www.art-dept.com](http://www.art-dept.com)

# Art Department



Nicolas Eldin

[www.art-dept.com](http://www.art-dept.com)

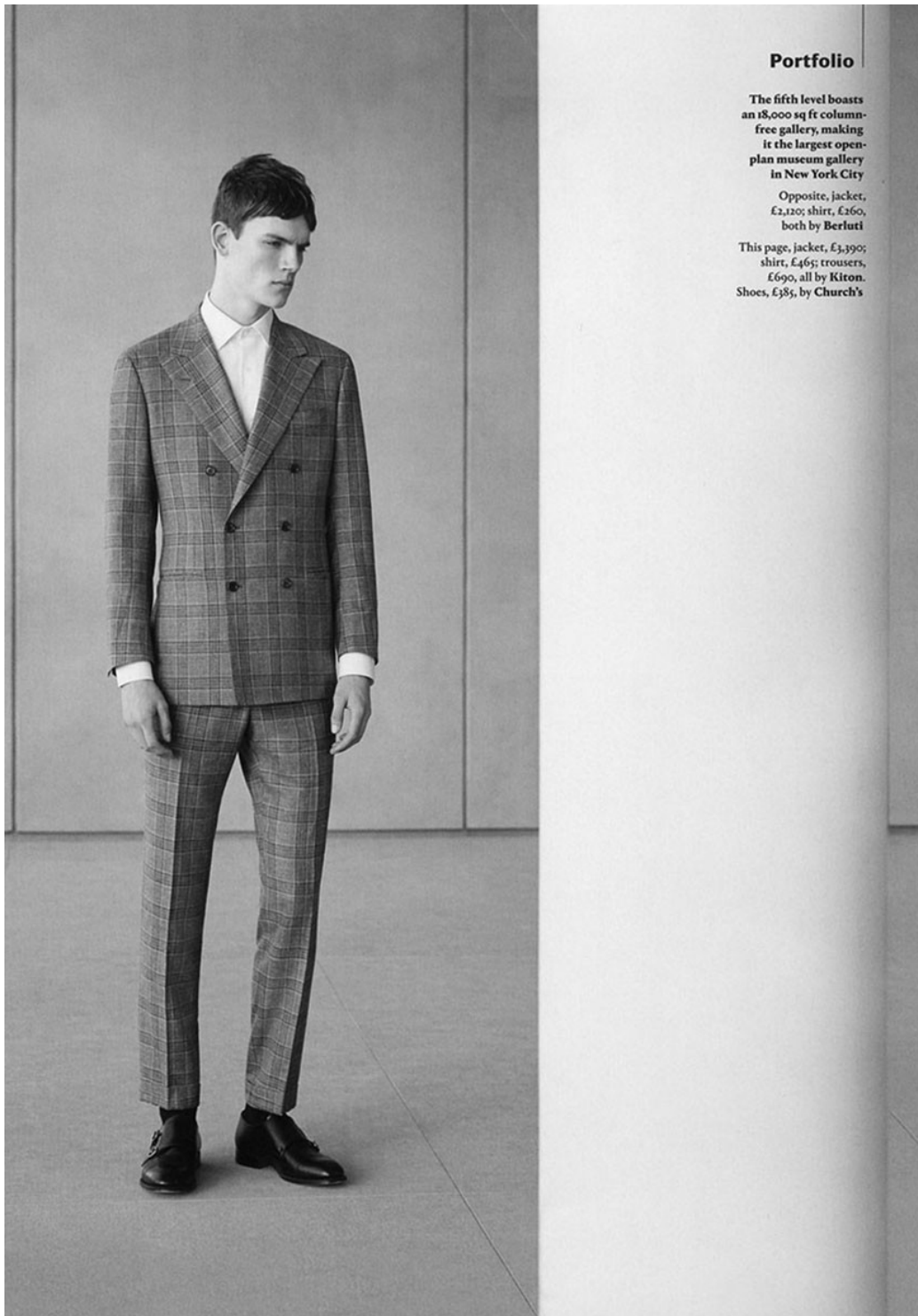
# Art Department



Nicolas Eldin

[www.art-dept.com](http://www.art-dept.com)

# Art Department



## Portfolio

The fifth level boasts an 18,000 sq ft column-free gallery, making it the largest open-plan museum gallery in New York City

Opposite, jacket, £2,120; shirt, £260, both by **Berluti**

This page, jacket, £3,390; shirt, £46; trousers, £690, all by **Kiton**. Shoes, £385, by **Church's**

## Nicolas Eldin

[www.art-dept.com](http://www.art-dept.com)

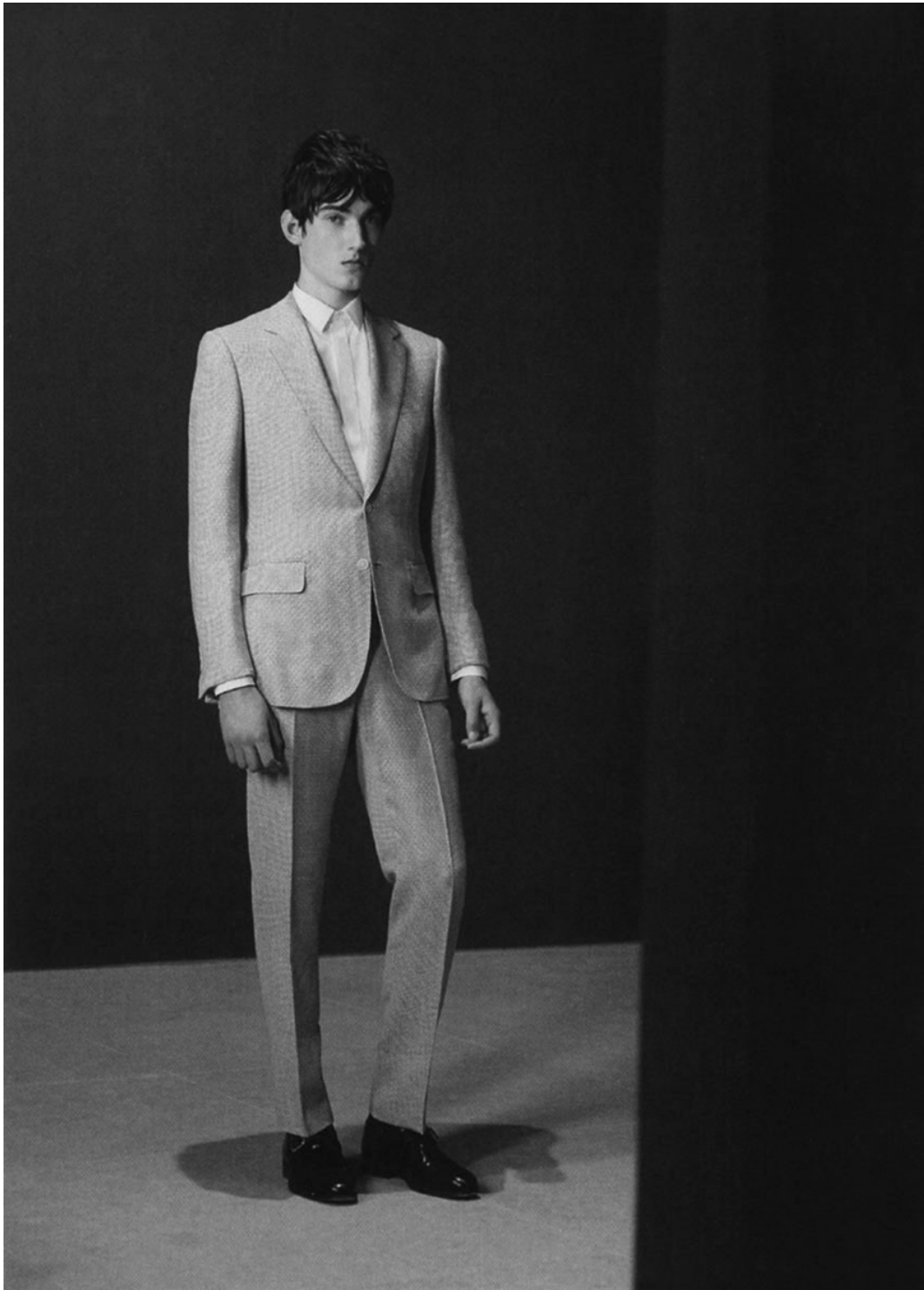
# Art Department



Nicolas Eldin

[www.art-dept.com](http://www.art-dept.com)

# Art Department



Nicolas Eldin

[www.art-dept.com](http://www.art-dept.com)

# Art Department

## Portfolio

The new Whitney will also feature a 170-seat theatre, a ground floor retail space and a top floor café

This page, suit, £1,750; shirt £195, both by Kilgour. Tie, £75, by Richard James. Shoes, £385, by Church's

Opposite, Adam wears jacket (part of suit), £1,590; shirt, £295; trousers, £490, all by Dunhill. Shoes £385, by Church's

Callum R wears coat, £1,790; jacket, £2,090; trousers, £790, all by Ermenegildo Zegna Couture. Shirt, £190, by Corneliani. Shoes, £385, by Church's

For stockists, see page 300



Hair: Nicolas Eldin at Art Department

Make-up: Ingeborg using Kiehl's at TMC-LA

Photographer's assistants: Spenser Ostrander, Satoshi Matoda

Digital operator: Ross Thompson

Fashion assistants: Malaika Crawford, Eleanor Vousden, Sophie Watson, Eyob Yohannes

Models: Adam Butcher at IMG, Callum Rockall and Callum Ward at New York Model Management

Casting: Julia Lange

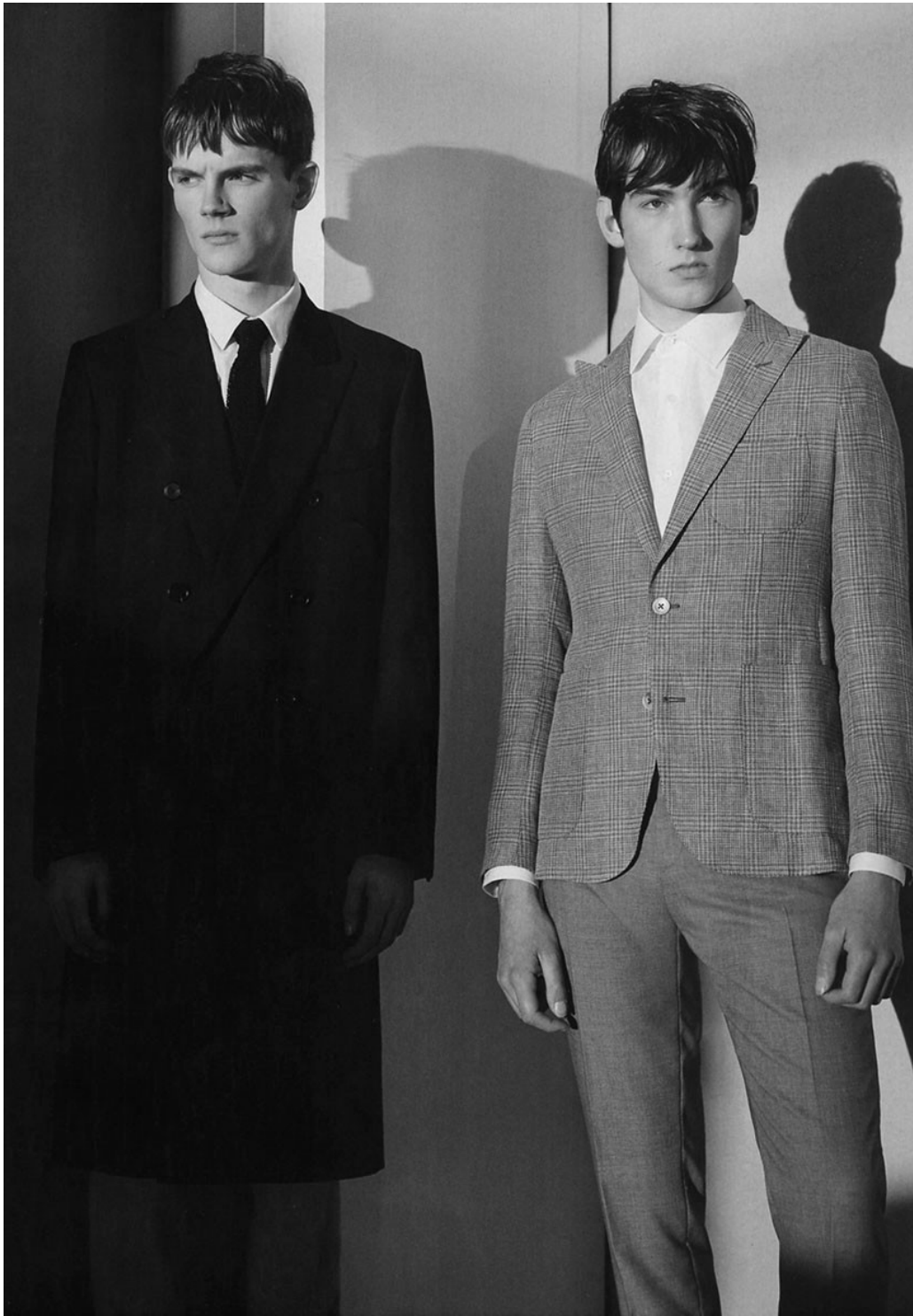
Production: HMS Production

Shot on location at the Whitney Museum of American Art, 99 Gansevoort Street, New York, whitney.org

## Nicolas Eldin

[www.art-dept.com](http://www.art-dept.com)

# Art Department



Nicolas Eldin

[www.art-dept.com](http://www.art-dept.com)



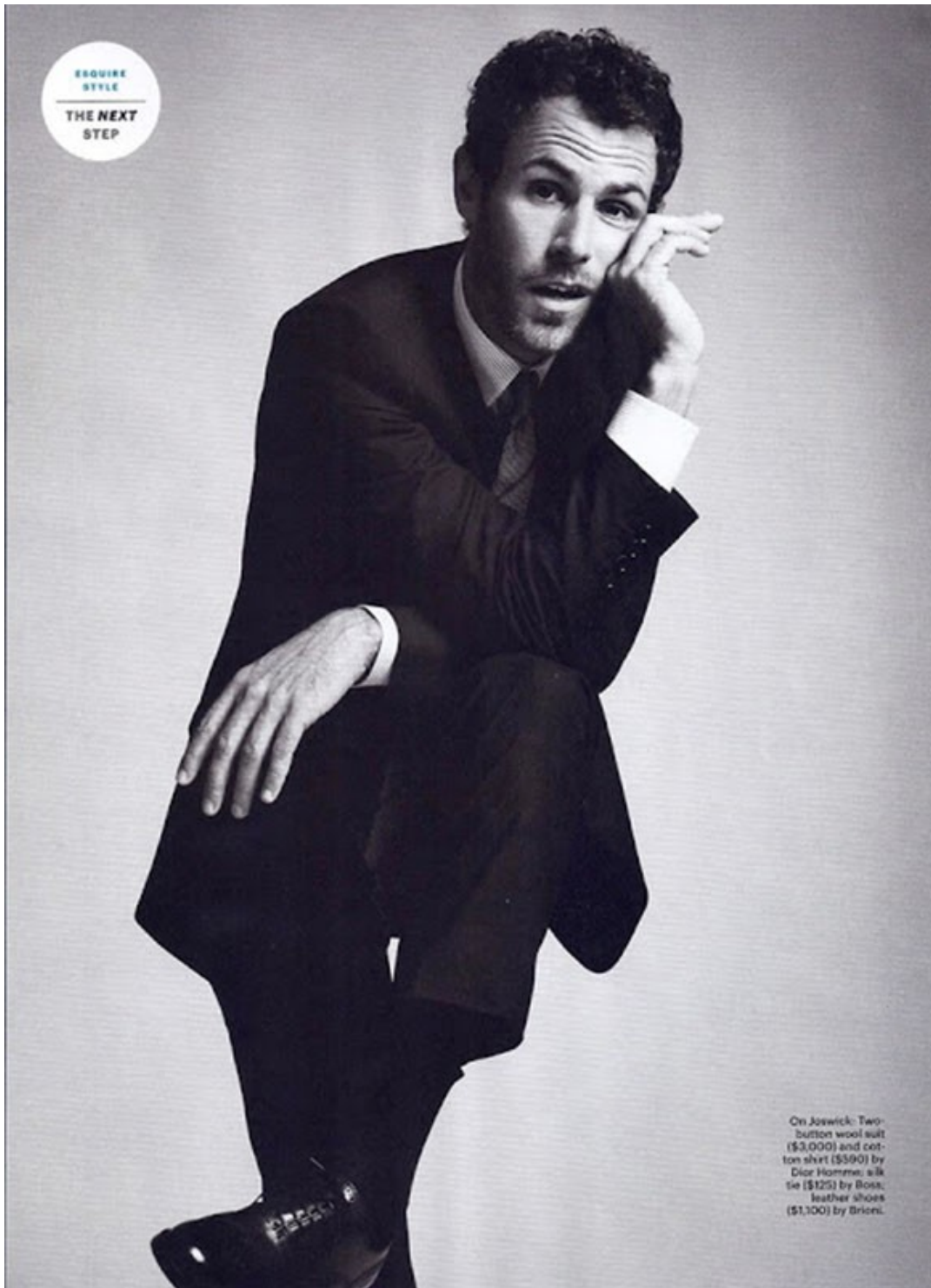
# Art Department



Nicolas Eldin

[www.art-dept.com](http://www.art-dept.com)


# Art Department



Nicolas Eldin

[www.art-dept.com](http://www.art-dept.com)

# Art Department



Double-breasted wool suit (\$1,895) and cashmere turtleneck sweater (\$595) by Burberry London.

TIP NO. 712

IF YOU'RE GONNA LAYER BLACK ON BLACK—AND IF YOU NEED THE FOLLOWING, THAT'S A-OKAY WITH US—MAKE SURE THERE'S SOME CONTRAST IN THE TEXTURES, DIFFERENT WEAVES OF WOOL AND COTTON HOLD BLACK DYE DIFFERENTLY, SO BY MIXING A CASHMERE SWEATER WITH A WOOL JACKET, YOU'RE BOUND TO HAVE A SUBTLE, APPEALING CONTRAST BETWEEN BLACKS.

FOR STORE INFORMATION SEE PAGE 212. CASTING BY ANDREA NINA RAMOS FOR URBAN PRODUCTIONS. GROOMING BY NICOLAS ELGIN FOR ARTLIST. PROP STYLING BY CHRIS STONE.

get\_image.com Clip, Save, Share, from any page.

101

Nicolas Eldin

[www.art-dept.com](http://www.art-dept.com)

# Art Department



TIP NO.  
452

FORGET THE FLAT, SOULLESS SURFACES THAT TYPIFY MOST DRESSY SUIT CLOTHS AND LOOK FOR WEAVES WITH UNCOMMON TEXTURES. THE SUBTLE HORIZONTAL GRAIN OF THIS TWO-PIECE ADDS DIMENSION AND DEPTH TO THE SUIT AND DEMANDS A CLOSER LOOK.

Two-button wool suit (\$1,295) and cotton shirt (\$395) by Calvin Klein  
Klein Collection; cashmere wool-and-silk tie (\$250) by Brunello Cucinelli.

get, not page.com Clip, Save, Share, from any page. Download free from the iTunes App Store or Google Play.

Nicolas Eldin

[www.art-dept.com](http://www.art-dept.com)

# Art Department



ESQUIRE  
STYLE  
THE NEXT  
STEP

This page, on Ambrecht:  
Two-button wool suit (\$3,270), cotton shirt (\$410), silk tie (\$175), and silk pocket square (\$130) by Dunhill; leather shoes (\$720) by Santoni; steel Star Retrograde automatic watch (\$4,865) by Montblanc. Opposite, on Shawn Joswick, denim designer and consultant: Double-breasted wool-and-silk suit (\$4,595) by Giorgio Armani; cotton shirt (\$99) by Banana Republic; silk tie (\$130) by John Varvatos; leather shoes (\$410) by Dunhill.

## Nicolas Eldin

[www.art-dept.com](http://www.art-dept.com)

# Art Department



Nicolas Eldin

[www.art-dept.com](http://www.art-dept.com)

# Art Department



Nicolas Eldin

[www.art-dept.com](http://www.art-dept.com)

# Art Department



Nicolas Eldin

[www.art-dept.com](http://www.art-dept.com)



# Art Department



ESQUIRE  
STYLE

THE NEXT  
STEP

This page, on Thomas Wirthenschlaeger, documentary filmmaker: Cotton trench coat (\$3,950) by Louis Vuitton; three-button cashmere-and-silk suit (\$8,562), cotton shirt (\$870), and cashmere-wool-and-silk tie (\$280) by Kiton; leather shoes (\$900) by Santoni. Opposite: Two-button wool-and-cashmere suit (\$2,950), cotton shirt (\$730), and silk tie (\$215) by Louis Vuitton; steel Ballon Bleu watch (\$5,900) by Cartier.

173

## Nicolas Eldin

[www.art-dept.com](http://www.art-dept.com)

# Art Department

CARBON COPY



FRANCISCO LACHOWSKI / WALTER LUND NADSON / DANNY SCHWARZ / KINSH HERRANDEZ / NICKY AYON  
NICOLAS RIPOLL / ASKE BRORSON PIERRE-MARIAL / MODEL OF THE MONTH IS DAVID BIVELA

Nicolas Eldin

[www.art-dept.com](http://www.art-dept.com)

# Art Department



Nicolas Eldin

[www.art-dept.com](http://www.art-dept.com)

# Art Department



Nicolas Eldin

[www.art-dept.com](http://www.art-dept.com)

# Art Department



Nicolas Eldin

[www.art-dept.com](http://www.art-dept.com)

# Art Department



Axel wears  
Jacket by LANVIN  
Pants with suspenders by VIVIENNE

Nicolas Eldin

[www.art-dept.com](http://www.art-dept.com)

# Art Department



Nicolas Eldin

[www.art-dept.com](http://www.art-dept.com)

# Art Department



Nicolas Eldin

[www.art-dept.com](http://www.art-dept.com)



# Art Department



Nicolas Eldin

[www.art-dept.com](http://www.art-dept.com)

# Art Department



Mattie wears  
White shirt by LANVIN  
Pants by WALTER VAN BEIRENDONCK  
Suspenders stylist's own

## Nicolas Eldin

[www.art-dept.com](http://www.art-dept.com)

# Art Department



Nicolas Eldin

[www.art-dept.com](http://www.art-dept.com)

# Art Department



Nicolas Eldin

[www.art-dept.com](http://www.art-dept.com)

# Art Department



Pierre wears  
Jacket by LAFAY  
Shirt by DIOR HOMME  
the FREESOUL

Nicolas Eldin

[www.art-dept.com](http://www.art-dept.com)

# Art Department



Maithe wears  
White shirt by LOUIS VUITTON  
Hat by LANVIN  
Suspenders stylist's own

Nicolas Eldin

[www.art-dept.com](http://www.art-dept.com)

# Art Department



Nicolas Eldin

[www.art-dept.com](http://www.art-dept.com)

# Art Department

Nicolas wears  
T-shirt by DSQUARED / Leggings with suspenders by BERNHARD WILLHELM  
necklace by CEDRIC JACQUEMYN / Leather bracelet by VIVIENNE WESTWOOD MAN



PHOTOGRAPHY BY NICOLAS VALOIS / STYLING BY RENE GLOOR  
STYLIST ASSISTANT: SIMON NYGARD  
MAKE-UP BY YACINE DIALLO / HAIR BY NICOLAS ELGIN  
DIGITAL ASSISTANT: EMMANUEL@IMAGIN  
PHOTOGRAPHER ASSISTANT: ELEONORA BRAVI  
NICOLAS RIPOLL AT BANANAS / FRANCISCO LACHOWSKI AT FORD EUROPE  
MILTHE LIAD MADSEN & AXEL BRORSON AT FORD EUROPE  
AND PIERRE-HARALD LEDUCQ AT MAJOR PARIS

## Nicolas Eldin

[www.art-dept.com](http://www.art-dept.com)



# Art Department



Nicolas Eldin

[www.art-dept.com](http://www.art-dept.com)

# Art Department



Nicolas Eldin

[www.art-dept.com](http://www.art-dept.com)

# Art Department



Nicolas Eldin

[www.art-dept.com](http://www.art-dept.com)

# Art Department



Nicolas Eldin

[www.art-dept.com](http://www.art-dept.com)

# Art Department



Nicolas Eldin

[www.art-dept.com](http://www.art-dept.com)

# Art Department



Nicolas Eldin

[www.art-dept.com](http://www.art-dept.com)

# Art Department



Nicolas Eldin

[www.art-dept.com](http://www.art-dept.com)

# Art Department



Nicolas Eldin

[www.art-dept.com](http://www.art-dept.com)



# Art Department



Nicolas Eldin

[www.art-dept.com](http://www.art-dept.com)

# Art Department



Nicolas Eldin

[www.art-dept.com](http://www.art-dept.com)

# Art Department



Tendance

## Jeu, set et mode

*Un match sur terre battue nourri de références aux années 1920, période mythique du tennis. Cotonnades, maille et tailoring sport jouent le grand chelem sur une palette de blancs et d'écrus.*

PHOTOS :  
KOTO BOLOPO POUR  
L'EXCESS STYLES  
RÉALISATION :  
MIKA MIZUTANI

15/02/2011 © 43

42 © 15/02/2011

## Nicolas Eldin

[www.art-dept.com](http://www.art-dept.com)

# Art Department



**Robert**  
Pull col V en coton  
torsadé, Lacoste, 125 €  
Pantalon de pyjama  
en popeline de coton,  
Hermès, 450 €  
Chemise en coton,  
Smalto, 105 €  
Cravate en soie,  
Paul Smith, 87 €  
Chaussures Zizi, Repetto.

*Page de droite.*  
**Chris**  
Pull en maille  
de coton tricoté  
à la main,  
Gucci, 2 250 €  
Bermuda en coton,  
Cerruti, 230 €

Nicolas Eldin

[www.art-dept.com](http://www.art-dept.com)

# Art Department



Nicolas Eldin

[www.art-dept.com](http://www.art-dept.com)

# Art Department



**Robert**  
Pull en maille de coton,  
Barberry Sport, 295 €.   
Chemise en coton,  
Ermengildo Zegna, 180 €.   
Cravate en soie tricotée,  
Sandro, 95 €. Pantalon en  
denim, Paul Smith, 227 €.

*Page de droite.*

*De g. à dr.*

**Gerhard**

Polo en piqué de coton,  
Petit Bateau, 40 €.   
Pantalon de pyjama  
en popeline de coton,  
Hermès, 450 €.   
Cravate rayée en soie,  
Lanvin, 300 €.   
Derbys en cuir et lin,  
Salvatore Ferragamo, 450 €.   
Ceinture tressée en Nylon,  
L'Aiglon, 93 €.

**Robert**

Polo en piqué de coton,  
Lacoste Live, 85 €.   
Cravate en satin de soie,  
Paul Smith, 87 €.   
Pantalon en coton,  
Azzaro, 135 €.

**Chris**

Polo en piqué de coton,  
Lacoste, 78 €.   
Cravate en soie tricotée,  
Sandro, 95 €.   
Chaussures de sport  
en cuir, Hermès, 550 €.   
Pantalon de costume  
en coton et soie,  
Kenzo, 920 € (le costume).

**Antoine**

Polo en coton,  
Sandro, 95 €.   
Pantalon de pyjama  
en popeline de coton,  
Hermès, 450 €.   
Cravate en soie tricotée,  
Sandro, 95 €.   
Chaussures Zizi, Repetto.  
Ceinture vintage,  
Kilwisch.

## Nicolas Eldin

[www.art-dept.com](http://www.art-dept.com)

# Art Department



## Nicolas Eldin

[www.art-dept.com](http://www.art-dept.com)

# Art Department



Nicolas Eldin

[www.art-dept.com](http://www.art-dept.com)



# Art Department



Nicolas Eldin

[www.art-dept.com](http://www.art-dept.com)

# Art Department



## **Gerhard**

Cardigan en coton,  
Louis Vuitton, 990 €.  
Chemise en coton,  
Ermenegildo Zegna, 180 €.  
Cravate en maille  
de soie, Hermès, 250 €.

## *Page de droite.*

### **Antoine**

Veste en lin,  
Paul & Joe, 510 €.  
Polo en coton,  
Sandro, 95 €.  
Bermuda en coton,  
IKKS, 90 €.  
Chaussures Ziri, Repetto.  
Foulard Losange,  
en popeline de coton,  
Hermès, 180 €.

Les mannequins portent  
des chaussettes montantes  
blanches Falke, 16 €.

## Nicolas Eldin

[www.art-dept.com](http://www.art-dept.com)

# Art Department



Remerciements au  
Racing Club de France,  
Club La Boule,  
route du Pont-Colbert,  
Versailles (Yvelines),  
01-39-50-59-41,  
[www.racingclubdefrance.net/  
racing/tennis/](http://www.racingclubdefrance.net/racing/tennis/)  
et au Musée de la Fédération  
française de tennis,  
Stade Roland-Garros,  
7, avenue Gordon-Benett,  
Paris (XVII<sup>e</sup>),  
01-47-43-48-48,  
[www.fnt.fr/site-tenniscur/](http://www.fnt.fr/site-tenniscur/)

Mannequins :  
Gerhard Freidl c/o New  
Medison / Chris Beck,  
Robert Laby et Antoine des  
Barvais c/o Succes,  
Coiffeur : Nicolas Eldin  
c/o Artlist.  
Opérateur digital :  
Thomas c/o Imag'in  
Assistants du photographe :  
Mathieu Boutang et  
Christian Borth.  
Assistant styliste :  
Antoine Sequin  
avec Alice Ito.  
Production :  
Ghislaine Peraria.

Cartes d'adresse page 85

## Nicolas Eldin

[www.art-dept.com](http://www.art-dept.com)