

Art Department

PANTENE

3X LESS HAIRFALL
SEE THE DIFFERENCE IN YOUR PONYTAIL

Our most advanced Pro-V formula strengthens your hair from root to tip for 3x less hairfall* and a visibly healthier ponytail. You'll see and feel the difference, and so will everyone else.

Want even more shine and nourishment? Add a few drops of our luscious Keratin Oil.

STRONG IS BEAUTIFUL



*Based on hair loss frequency vs. non-conditioned shampoo.



Nicolas Eldin

www.art-dept.com

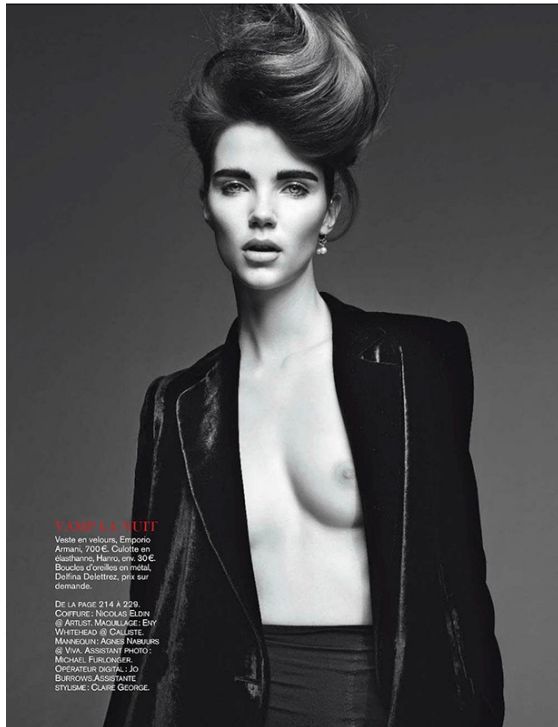
Art Department



Nicolas Eldin

www.art-dept.com

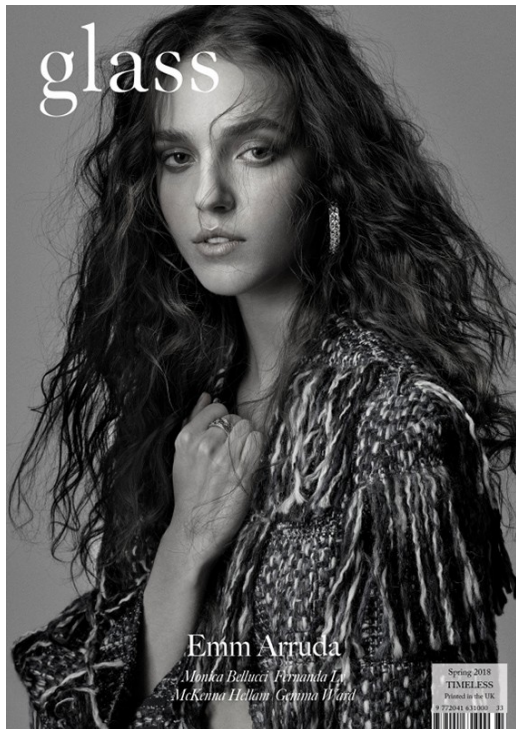
Art Department



Nicolas Eldin

www.art-dept.com

Art Department



Nicolas Eldin

www.art-dept.com

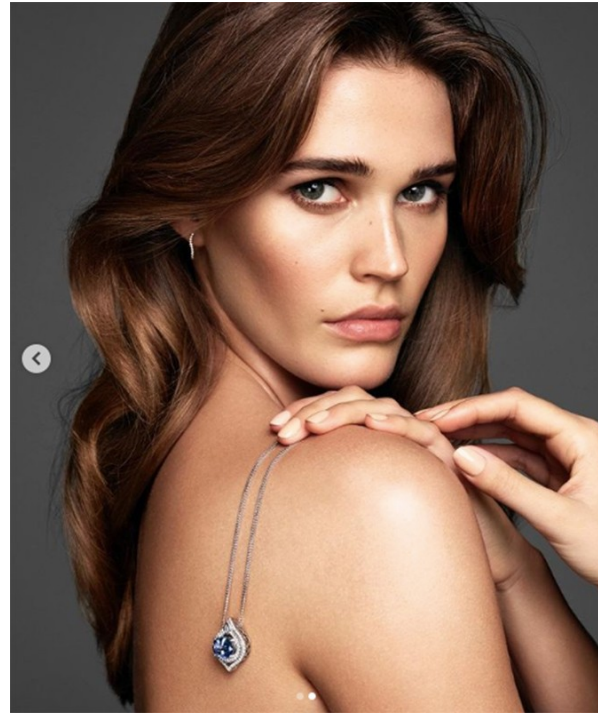
Art Department



Nicolas Eldin

www.art-dept.com

Art Department



neu classic
special issue

深酒紅唇
模特兒：Lara
珠寶：Versace、Vanessa、Panda
髮型：Lara
化妝：Lara
攝影：Lara

濃妝艷抹似乎成為20年代女性形象的最佳象徵，在電影
傳聞黑白片的狀態之下，我們看到的是深色的唇以及深色的髮染。這
此以20年代為靈感而來的設計師 Michael Anthony 說：
「Mary Pickford 是當時性感的 IT girl，她那美艷的造型讓我印象深刻，
我這次利用現代更精緻的飾物，打造出更精緻的妝容，可以讓女性
更摩登，而不是真的像20年代那些濃妝艷抹的女性一樣。」
深酒紅的紅唇，雖然成為2016年秋冬的寵兒，但除了手文更特別在市場上，
色彩鮮艷的髮型顯得相當高貴精緻，就是利用鮮艷的髮色與精緻的妝容。
Michael 說：「需要像以前這種精緻的妝容，上下性的比例就很重要，
如果天生骨相較瘦，可以將髮型拉長之外，因為髮型這種顏色，在視覺上會有
讓髮型顯小的視覺效果，所以不難將髮型加大，讓上下性的比例更協調。」
髮型部分，不過著20年代的捲髮造型，而是將當今的髮型
融合自然效果，色調上更暖色，有明顯的線條之外，再讓髮型顯化，
輕鬆散發出一般女性的獨特魅力，至於飾物有如圖中的髮圈，
則是想讓成型的造型，多一點變化，配合於深酒紅的髮色與髮染，
讓女性擁有自己最美的一面。 撰文：王正男

20年代，是女性揮脫束縛的時代，擺脫了僵硬的
淑女形象，高興享受屬於自己身型的決定權，縱使在夜晚的
舞會，那個年代是個強調衝突與摩登的女性世代。

Photographed by Enrique Vega

retro glam
華麗年代

160

Nicolas Eldin

www.art-dept.com

Art Department



Nicolas Eldin

www.art-dept.com

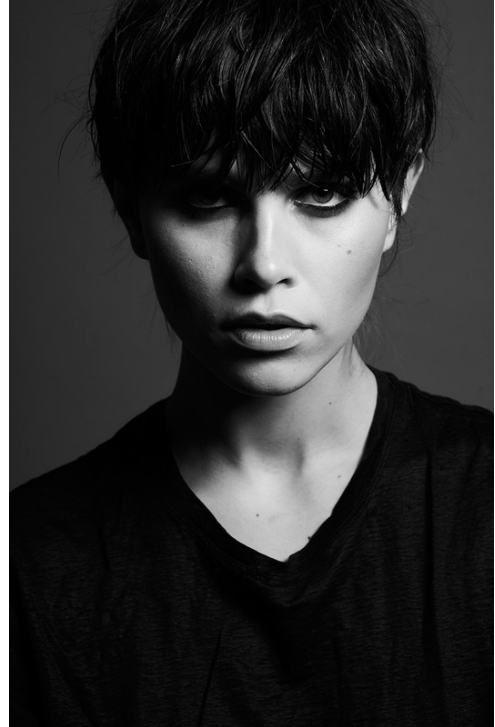
Art Department



Nicolas Eldin

www.art-dept.com

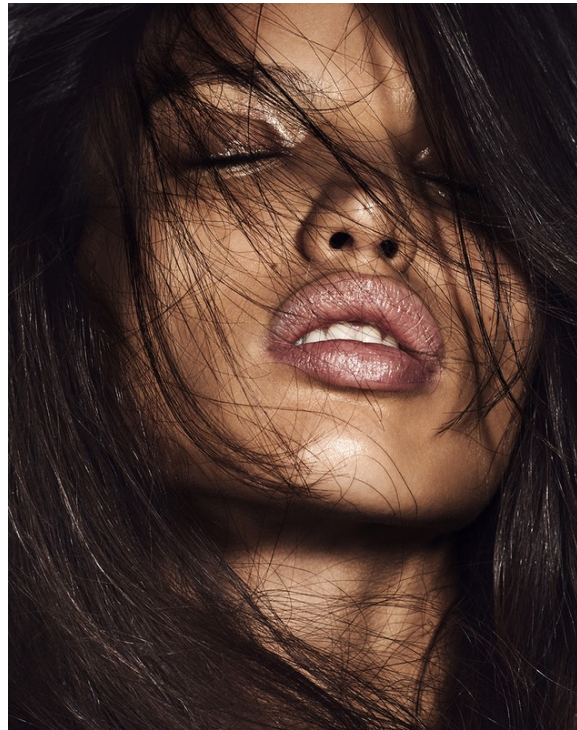
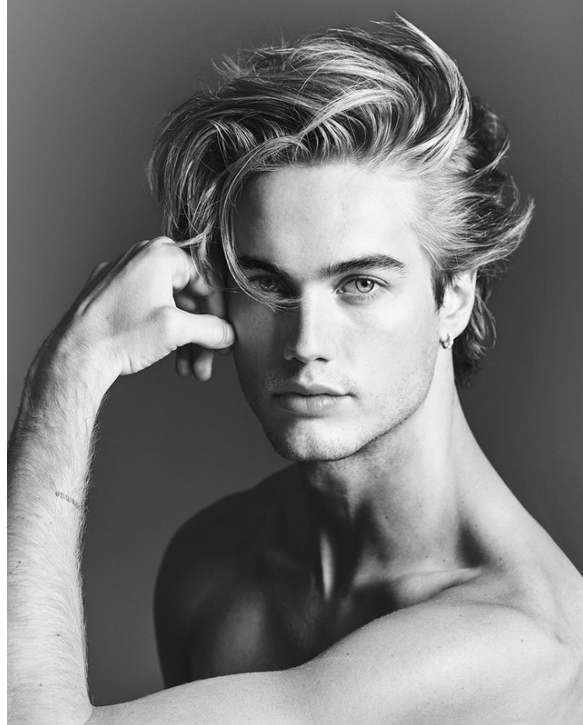
Art Department



Nicolas Eldin

www.art-dept.com

Art Department



Nicolas Eldin

www.art-dept.com

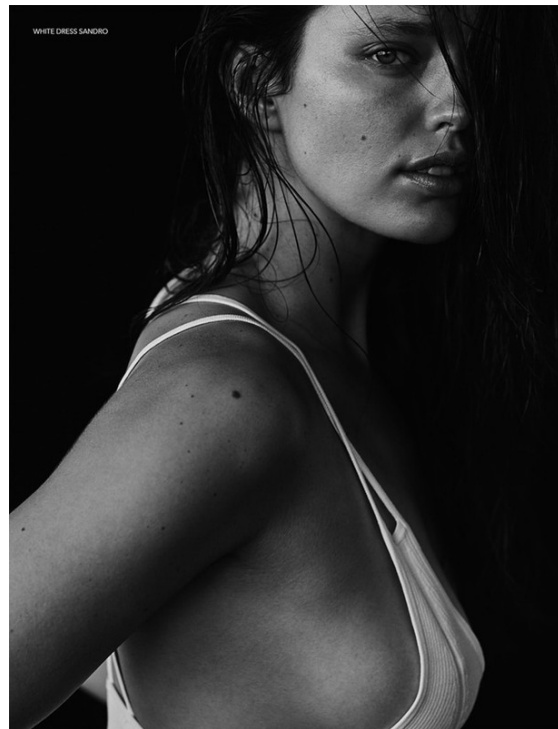
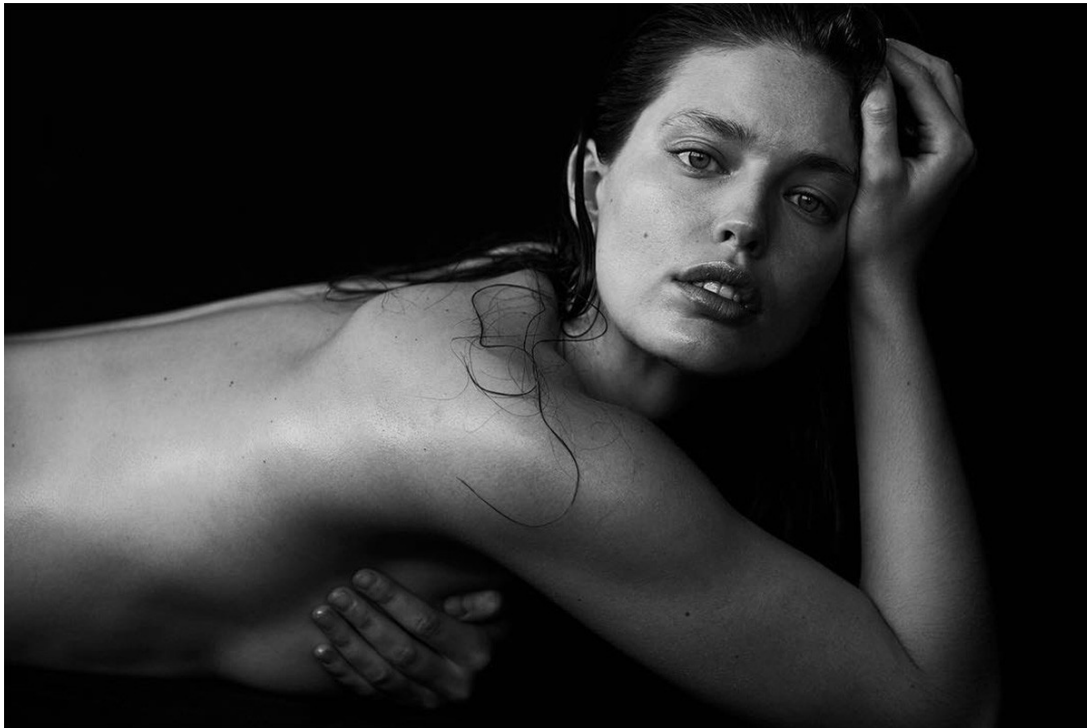
Art Department



Nicolas Eldin

www.art-dept.com

Art Department



Nicolas Eldin

www.art-dept.com

Art Department



Nicolas Eldin

www.art-dept.com

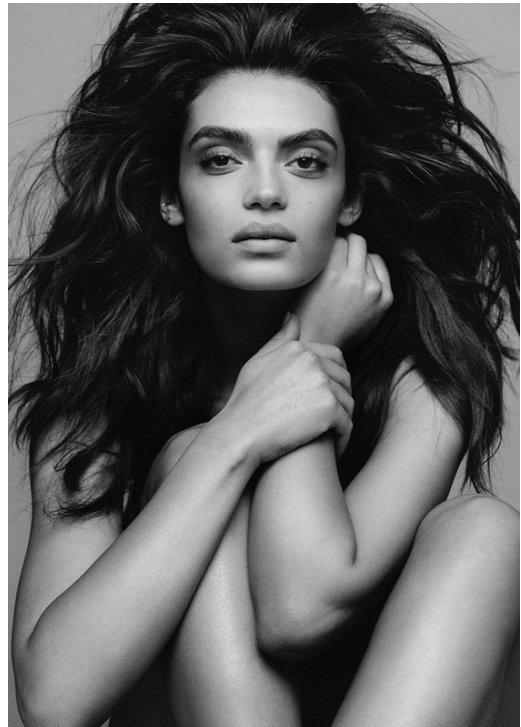
Art Department



Nicolas Eldin

www.art-dept.com

Art Department



Nicolas Eldin

www.art-dept.com

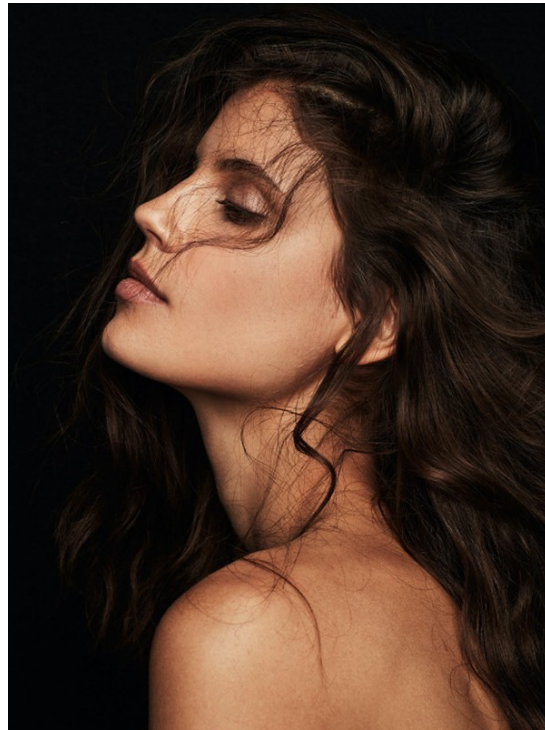
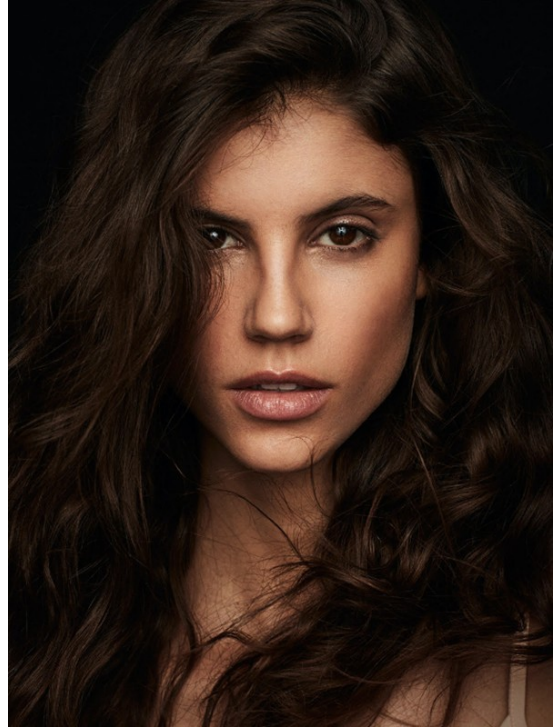
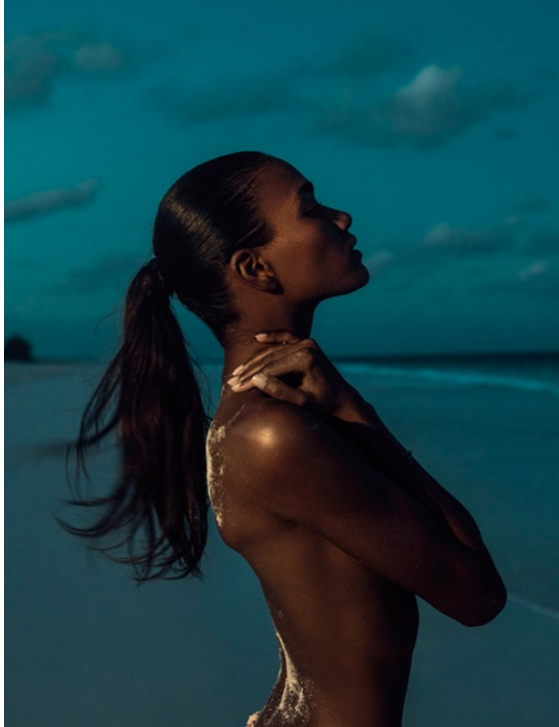
Art Department



Nicolas Eldin

www.art-dept.com

Art Department



Nicolas Eldin

www.art-dept.com

Art Department



Nicolas Eldin

www.art-dept.com

Art Department



Nicolas Eldin

www.art-dept.com

Art Department



Nicolas Eldin

Art Department



Nicolas Eldin

www.art-dept.com

Art Department



BEAUTY

Si torna a sorridere e questo è il momento della ricarica.
Con il make-up dai toni fluo e vitaminici (giallo e arancio di stagione)
e tecniche di «contouring» che esaltano i punti luce.
E poi si condivide tutto: il trucco felice è visibile e contagioso.

di FRANCESCA BUSSI

IO SONO POSITIVA

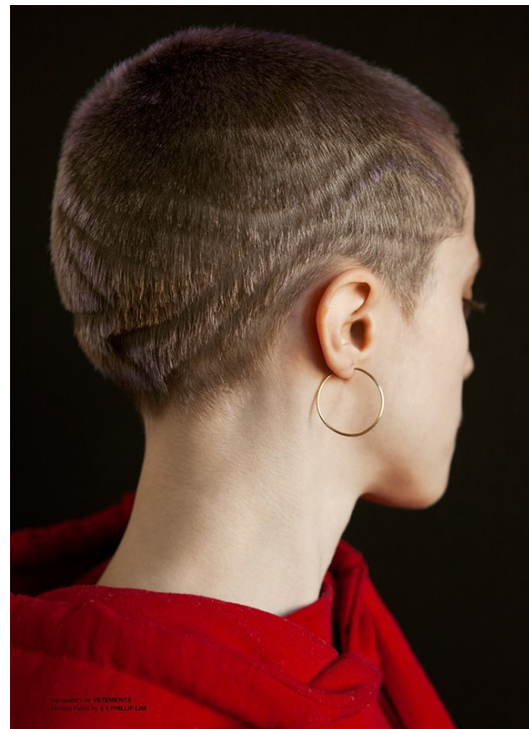
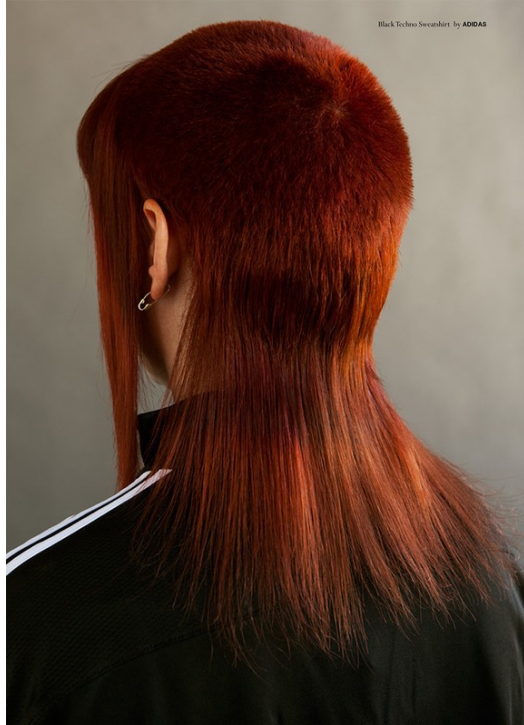
COLORI FLUIDI
Le labbra saranno
in primo piano anche
in spogio, soprattutto
per l'effetto dei nuovi
prodotti liquidi nella
formula di Base Color
Fluo Liquid Lip Fusion
di Estée Lauder
(€ 29,90).

184 | VANITY FAIR | FOTO: JAMES HOUSTON | 05.08.2015 | 05.08.2015 | SERVIZIO: CINZIA BRANDI | VANITY FAIR | 183

Nicolas Eldin

www.art-dept.com

Art Department



Nicolas Eldin

www.art-dept.com

Art Department



Nicolas Eldin

www.art-dept.com

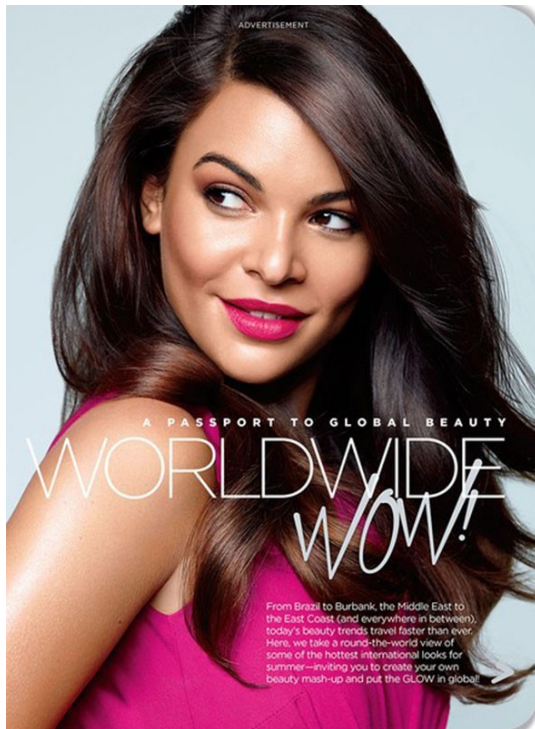
Art Department



Nicolas Eldin

www.art-dept.com

Art Department



Nicolas Eldin

www.art-dept.com

Art Department



Nicolas Eldin

www.art-dept.com

Art Department



Nicolas Eldin

www.art-dept.com