

# Art Department



Sirsa

[www.art-dept.com](http://www.art-dept.com)



# Art Department



Sirsa

[www.art-dept.com](http://www.art-dept.com)



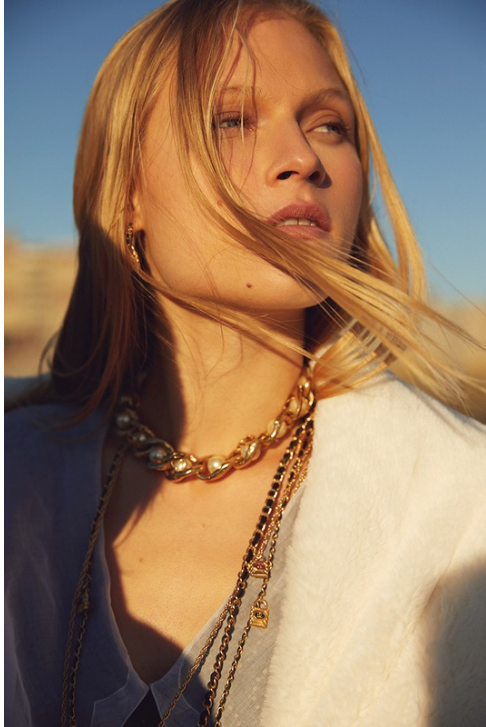
# Art Department



Sirsa

[www.art-dept.com](http://www.art-dept.com)

# Art Department



Sirsa

[www.art-dept.com](http://www.art-dept.com)



# Art Department



Sirsa

[www.art-dept.com](http://www.art-dept.com)



# Art Department



Sirsa

[www.art-dept.com](http://www.art-dept.com)



# Art Department



Sirsa

[www.art-dept.com](http://www.art-dept.com)



# Art Department



Sirsa

[www.art-dept.com](http://www.art-dept.com)



# Art Department



Sirsa

[www.art-dept.com](http://www.art-dept.com)



# Art Department



Sirsa

[www.art-dept.com](http://www.art-dept.com)



# Art Department



Sirsa

[www.art-dept.com](http://www.art-dept.com)



# Art Department



Sirsa

[www.art-dept.com](http://www.art-dept.com)



# Art Department



Sirsa

[www.art-dept.com](http://www.art-dept.com)

# Art Department



Sirsa

[www.art-dept.com](http://www.art-dept.com)



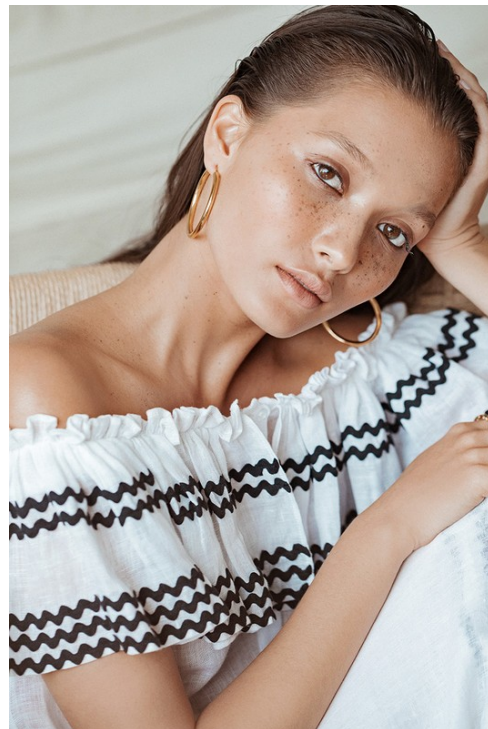
# Art Department



Sirsa

[www.art-dept.com](http://www.art-dept.com)

# Art Department

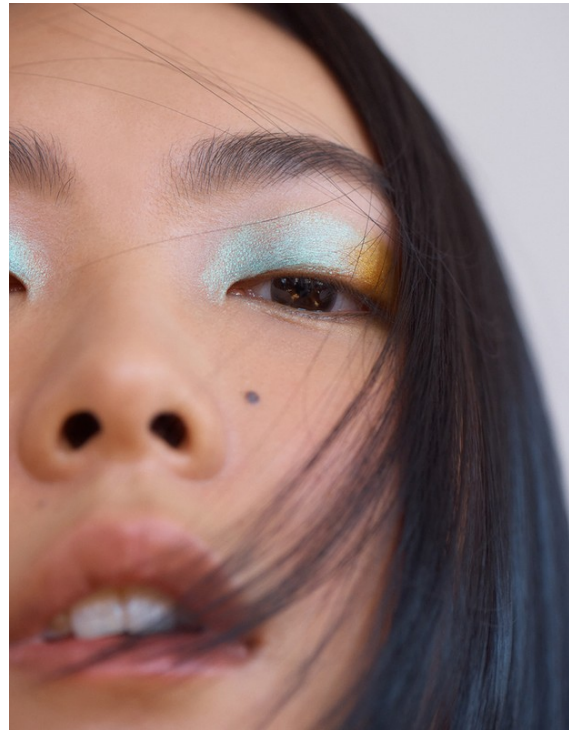
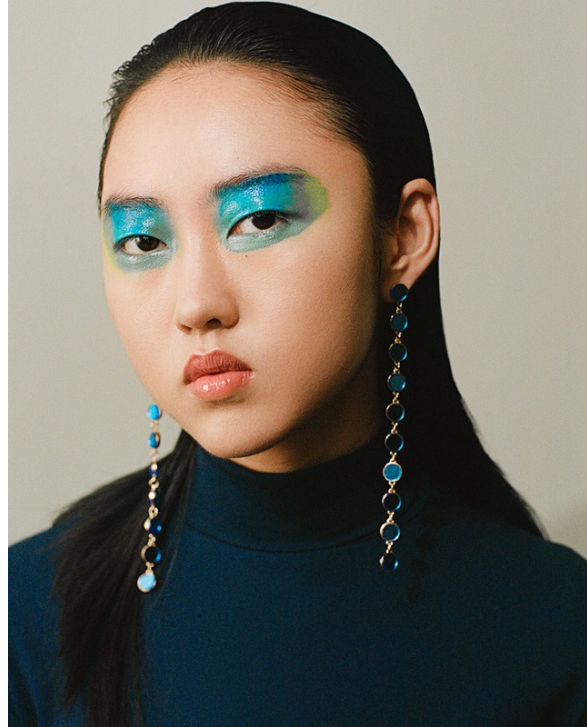


Sirsa

[www.art-dept.com](http://www.art-dept.com)



# Art Department



Sirsa

[www.art-dept.com](http://www.art-dept.com)

# Art Department

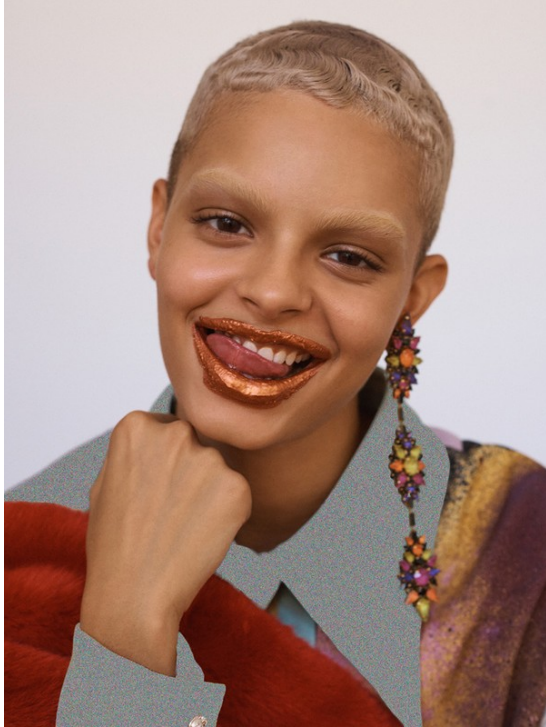


Sirsa

[www.art-dept.com](http://www.art-dept.com)



# Art Department



Sirsa

[www.art-dept.com](http://www.art-dept.com)

# Art Department

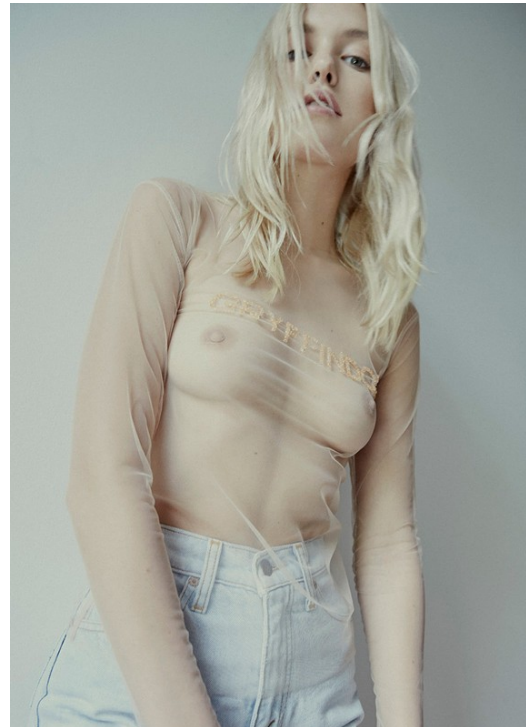


Sirsa

[www.art-dept.com](http://www.art-dept.com)



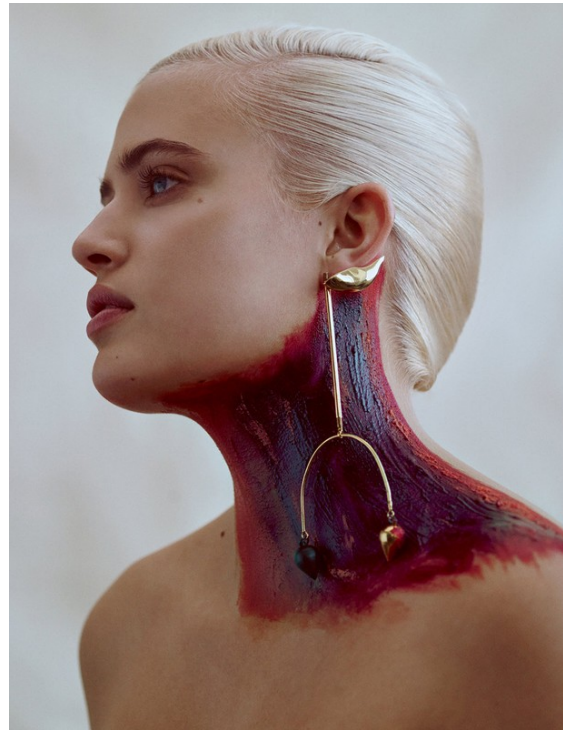
# Art Department



Sirsa

[www.art-dept.com](http://www.art-dept.com)

# Art Department

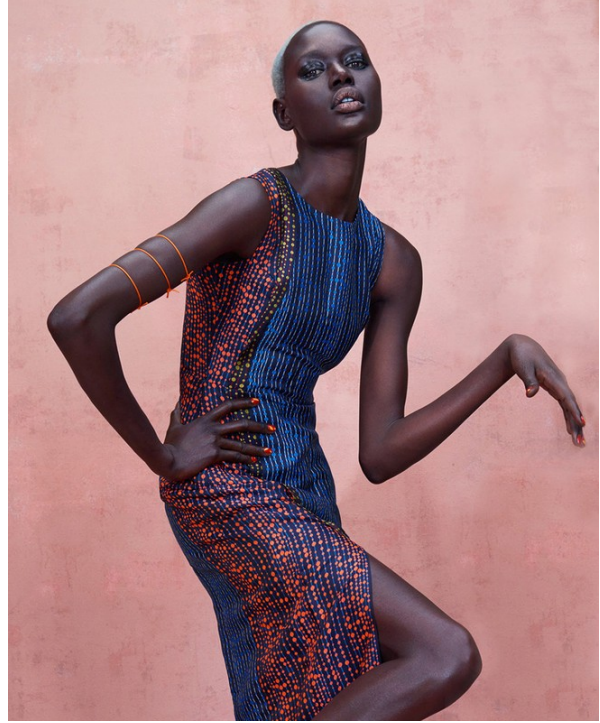


Sirsa

[www.art-dept.com](http://www.art-dept.com)



# Art Department



Sirsa

[www.art-dept.com](http://www.art-dept.com)

# Art Department

Montaigne,  
CHANEL, Balise  
meset, THE BROWN,  
Gente en route,  
CAROLINA  
AMATO



Chemise, BOCHAS

## Sirsa

[www.art-dept.com](http://www.art-dept.com)



# Art Department



Total look, THOM BROWN.



Robe, CÉLINE.

*Manteau:*  
Hollie May, Sakie et Ana Trump  
*Made:*  
Coffure:  
Sirena Ponceano  
Maquillage:  
Alida D'Amico  
*Production:*  
Barbel Skammanich  
*Assistant photo:*  
Marcel Vercine  
*Assistante styliste:*  
Marie Choi  
*Assistant production:*  
Alexandre Cabillon et  
Arno Seligman  
*Casting:*  
David Orr  
*Technicien Support Digital:*  
Brian Heimbauer

## Sirsa

[www.art-dept.com](http://www.art-dept.com)

# Art Department

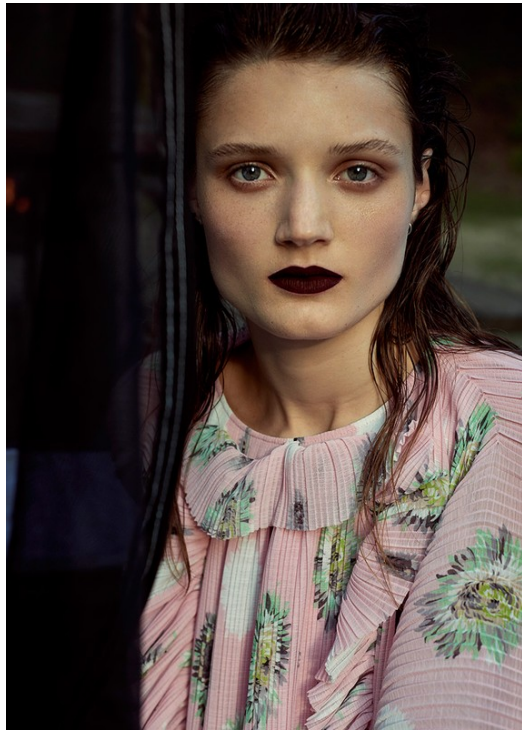


Sirsa

[www.art-dept.com](http://www.art-dept.com)



# Art Department



Sirsa

[www.art-dept.com](http://www.art-dept.com)

# Art Department

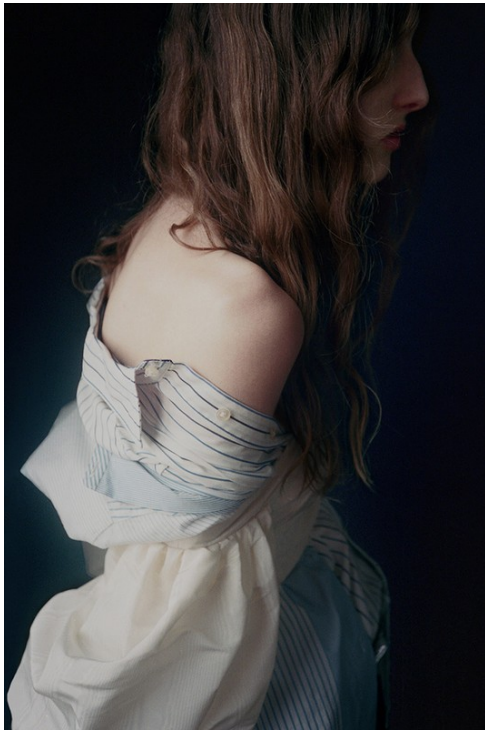


Sirsa

[www.art-dept.com](http://www.art-dept.com)



# Art Department

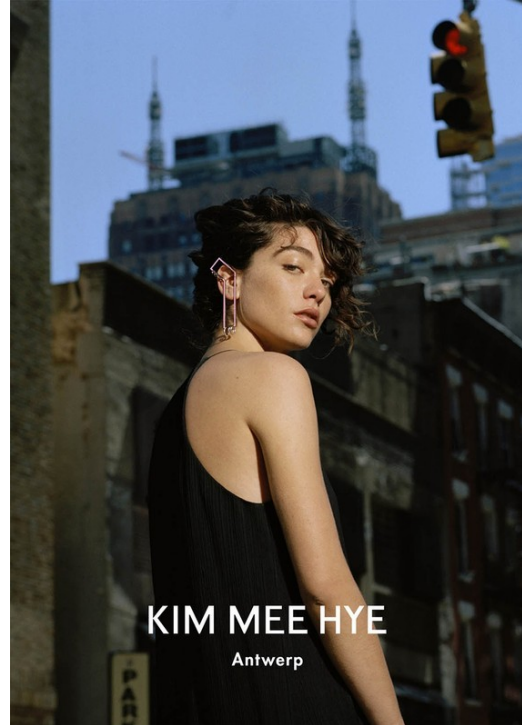


Sirsa

[www.art-dept.com](http://www.art-dept.com)



# Art Department



Sirsa

[www.art-dept.com](http://www.art-dept.com)



# Art Department

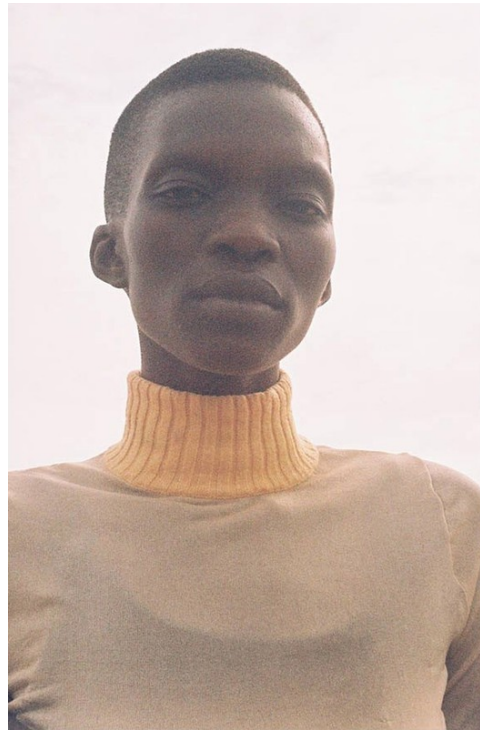


Sirsa

[www.art-dept.com](http://www.art-dept.com)



# Art Department



Sirsa

[www.art-dept.com](http://www.art-dept.com)



# Art Department



Sirsa

[www.art-dept.com](http://www.art-dept.com)

# Art Department



Sirsa

[www.art-dept.com](http://www.art-dept.com)



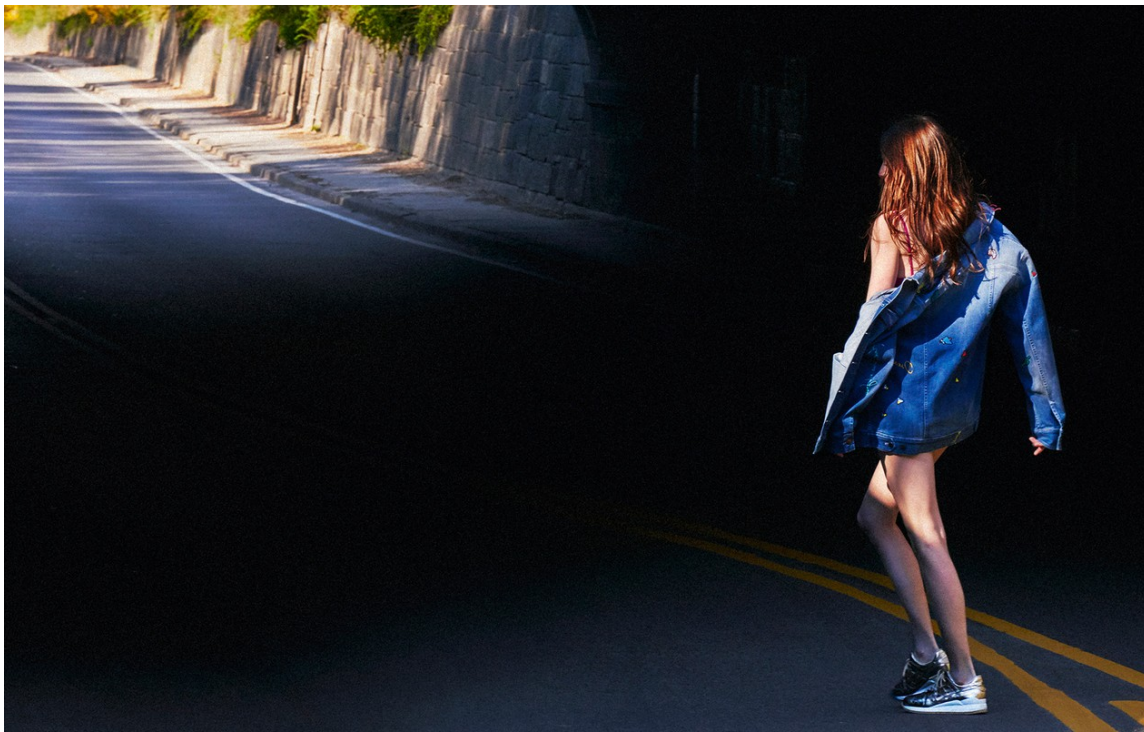
# Art Department



Sirsa

[www.art-dept.com](http://www.art-dept.com)

# Art Department



Sirsa

[www.art-dept.com](http://www.art-dept.com)