

# Art Department



## JULIA ROIT FELD

LIBERTÉ. SOPHISTIQUÉ. BEAUTÉ

BY ELGA DRAZEM | MADE TERRY GATES | CONCEPT CLAUDIA RIBEIRO

MILDLY SUPERSTITIOUS, JULIA RESTOIN-ROITFELD WON'T PASS THE SALTSHAKER DIRECTLY FROM HER HAND OR SPILL DETAILS ON AN ONGOING PROJECT BEFORE IT IS SECURE. FAR TOO DELICATE FOR A WOMAN WITH SO MUCH APPEAL, THE PARSIAN BEAUTY RECEIVED LIFESTYLE MAGAZINE FOR A REVEALLING CHAT. "I WORK AND LIVE IN THE WORLD OF FASHION BUT DO NOT FOLLOW TRENDS."



## Staci Child

[www.art-dept.com](http://www.art-dept.com)

# Art Department



Staci Child

[www.art-dept.com](http://www.art-dept.com)

# Art Department



Staci Child

[www.art-dept.com](http://www.art-dept.com)

# Art Department



Staci Child

[www.art-dept.com](http://www.art-dept.com)

# Art Department



Staci Child

[www.art-dept.com](http://www.art-dept.com)

# Art Department

## OBSESIÓN TOTAL

Sólo una colección como Crucero de Chanel es capaz de transformar de inmediato lo sobrio en exuberante. En riguroso blanco y negro, está hecha en seda, tweed o piel y rematada con accesorios de alta joyería de la firma.

FOTOS: NICHOLAS ROUITZEN @ TRACCIÓN ARTIST MANAGEMENT  
COORDINACIÓN DE MODA: SARA GALINDO Y VALE POLNOROFF  
PRODUCCIÓN ELLE MEXICO



## Staci Child

[www.art-dept.com](http://www.art-dept.com)

# Art Department



Staci Child

[www.art-dept.com](http://www.art-dept.com)

# Art Department

## CROWN GOLD

Photographed by NICHOLAS RUTZEN  
Styled by JAIME KAY WAXMAN

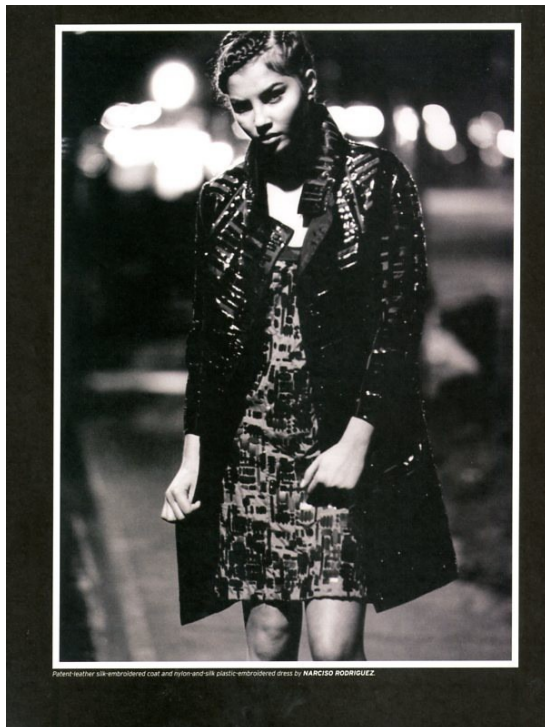
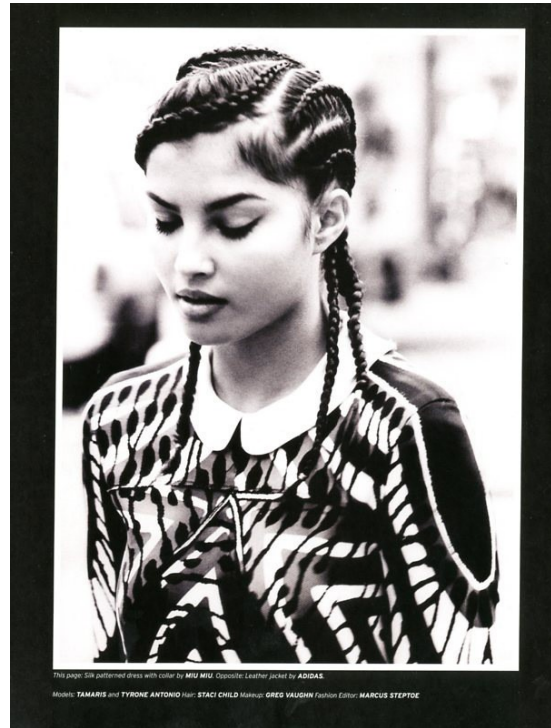
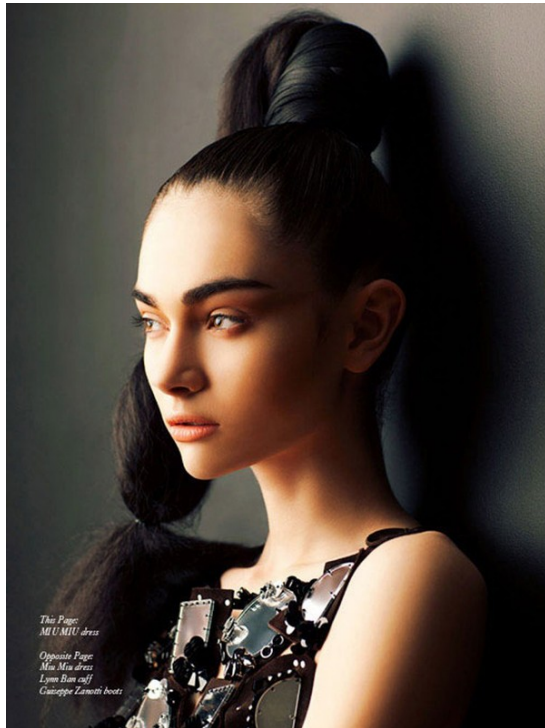


## Staci Child

[www.art-dept.com](http://www.art-dept.com)



# Art Department



## Staci Child

[www.art-dept.com](http://www.art-dept.com)

# Art Department



Staci Child

[www.art-dept.com](http://www.art-dept.com)

# Art Department



Staci Child

[www.art-dept.com](http://www.art-dept.com)

# Art Department



Staci Child

[www.art-dept.com](http://www.art-dept.com)

# Art Department



Staci Child

www.art-dept.com

# Art Department



PROPERTY OF BLOOMINGDALE'S  
DO NOT REMOVE  
THIS LABEL  
FROM THE GARMENT  
OR THE STORE  
BY ANY MEANS  
THANK YOU FOR SHOPPING  
AT BLOOMINGDALE'S  
\*  
165



PROPERTY OF BLOOMINGDALE'S  
DO NOT REMOVE  
THIS LABEL  
FROM THE GARMENT  
OR THE STORE  
BY ANY MEANS  
THANK YOU FOR SHOPPING  
AT BLOOMINGDALE'S  
\*  
165



## Staci Child

[www.art-dept.com](http://www.art-dept.com)

# Art Department



Staci Child

[www.art-dept.com](http://www.art-dept.com)

# Art Department



Staci Child

[www.art-dept.com](http://www.art-dept.com)



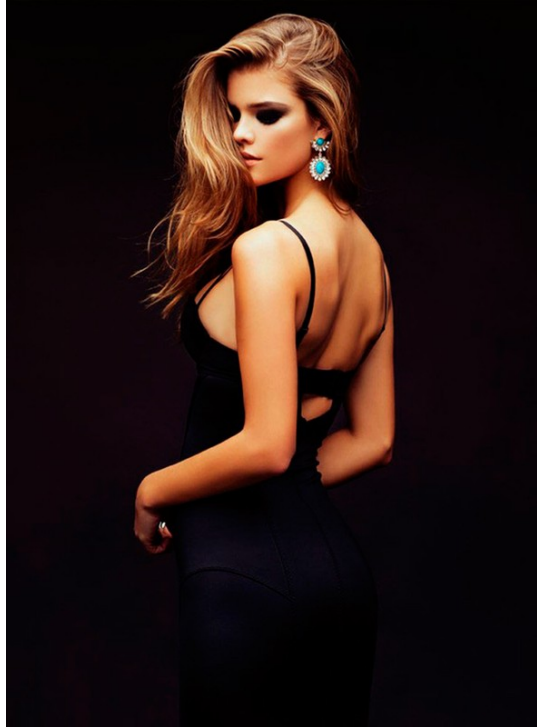
# Art Department



Staci Child

[www.art-dept.com](http://www.art-dept.com)

# Art Department



Staci Child

[www.art-dept.com](http://www.art-dept.com)