

# Art Department



Staci Child

[www.art-dept.com](http://www.art-dept.com)

# Art Department



Staci Child

[www.art-dept.com](http://www.art-dept.com)

# Art Department

## JULIA ROIT FELD

LIBERTÉ, SOPHISTIQUE, BEAUTÉ

BY ELOA ORAZEM IMAGE TERRY GATES CONCEPT CLAUDIA RIBEIRO

MILDLY SUPERSTITIOUS, JULIA RESTOIN-ROITFELD WON'T PASS THE SALTSHAKER DIRECTLY FROM HER HAND OR SPILL DETAILS ON AN ONGOING PROJECT BEFORE IT IS SECURE. FAR TOO DELICATE FOR A WOMAN WITH SO MUCH APPEAL, THE PARISIAN BEAUTY RECEIVED LIFESTYLE MAGAZINE FOR A REVEALLING CHAT: "I WORK AND LIVE IN THE WORLD OF FASHION BUT DO NOT FOLLOW TRENDS."



## Staci Child

[www.art-dept.com](http://www.art-dept.com)

# Art Department



Staci Child

[www.art-dept.com](http://www.art-dept.com)

# Art Department



Staci Child

[www.art-dept.com](http://www.art-dept.com)

# Art Department



Staci Child

[www.art-dept.com](http://www.art-dept.com)

# Art Department



Staci Child

[www.art-dept.com](http://www.art-dept.com)

# Art Department



Staci Child

[www.art-dept.com](http://www.art-dept.com)



# Art Department



Staci Child

[www.art-dept.com](http://www.art-dept.com)

# Art Department



Staci Child

[www.art-dept.com](http://www.art-dept.com)

# Art Department



Staci Child

[www.art-dept.com](http://www.art-dept.com)

# Art Department



Staci Child

[www.art-dept.com](http://www.art-dept.com)

# Art Department



Staci Child

[www.art-dept.com](http://www.art-dept.com)

# Art Department



Staci Child

[www.art-dept.com](http://www.art-dept.com)

# Art Department

## OBSESIÓN TOTAL

*Sólo una colección como Crucero de Chanel es capaz de transformar de inmediato lo sobrio en exuberante. En riguroso blanco y negro, está hecha en seda, tweed o piel y rematada con accesorios de alta joyería de la firma.*

FOTOS: NICHOLAS ROUITZEN @  
TRACTION ARTIST MANAGEMENT  
COORDINACION DE MODA:  
SARA GALINDO Y VALE POLNOROFF  
PRODUCCION ELLE MEXICO



## Staci Child

[www.art-dept.com](http://www.art-dept.com)

# Art Department



Staci Child

[www.art-dept.com](http://www.art-dept.com)



# Art Department



"Esta colección es acerca  
de la mujer de Cannes,  
que mezcla trajes de baño  
con perlas y diamantes  
verdaderos. Después de  
todo, no puedes matarte  
al agua con joyería falsa".  
Karl Lagerfeld

Staci Child

[www.art-dept.com](http://www.art-dept.com)

# Art Department



Staci Child

[www.art-dept.com](http://www.art-dept.com)

# Art Department



Staci Child

[www.art-dept.com](http://www.art-dept.com)

# Art Department



Staci Child

[www.art-dept.com](http://www.art-dept.com)

# Art Department

## CROWN GOLD

---

Photographed by NICHOLAS RUTZEN  
Styled by JAIME KAY WAXMAN



Staci Child

[www.art-dept.com](http://www.art-dept.com)

# Art Department



Staci Child

[www.art-dept.com](http://www.art-dept.com)

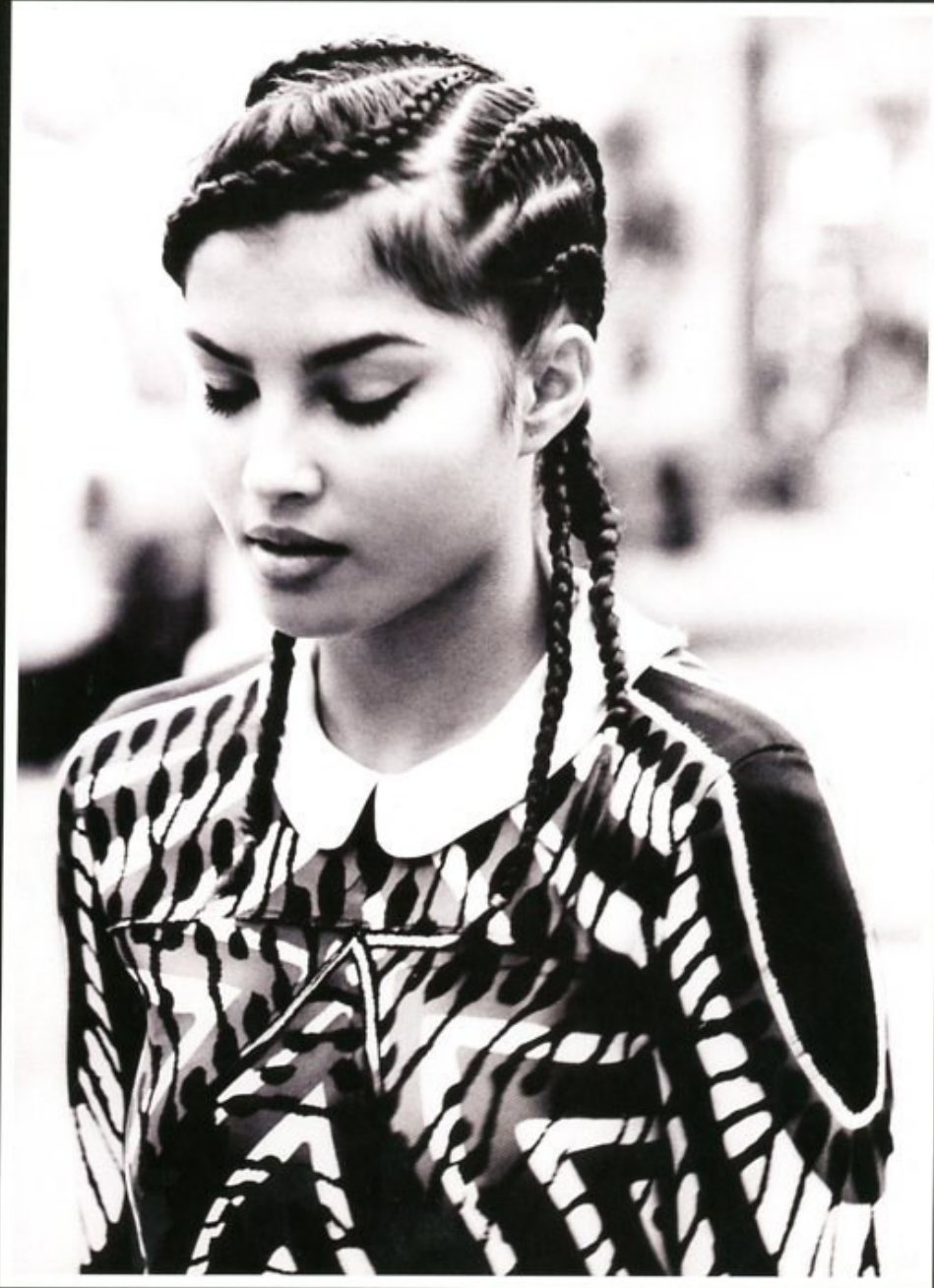
# Art Department



Staci Child

[www.art-dept.com](http://www.art-dept.com)

# Art Department



*This page: Silk patterned dress with collar by MIU MIU. Opposite: Leather jacket by ADIDAS.*

*Models: TAMARIS and TYRONE ANTONIO Hair: STACI CHILD Makeup: GREG VAUGHN Fashion Editor: MARCUS STEPTOE*

## Staci Child

[www.art-dept.com](http://www.art-dept.com)



# Art Department



*Patent-leather silk-embroidered coat and nylon-and-silk plastic-embroidered dress by **NARCISO RODRIGUEZ**.*

Staci Child

[www.art-dept.com](http://www.art-dept.com)

# Art Department



## BOULEVARD OF BROKEN DREAMS

You don't need a star  
on the Hollywood  
Walk of Fame to rule  
the Sunset Strip.

PHOTOGRAPHY BY  
NICHOLAS RUTZEN

STYLED BY  
DJUNA BEL

page 68

## Staci Child

[www.art-dept.com](http://www.art-dept.com)

# Art Department



Staci Child

[www.art-dept.com](http://www.art-dept.com)

# Art Department



Staci Child

[www.art-dept.com](http://www.art-dept.com)

# Art Department



Staci Child

[www.art-dept.com](http://www.art-dept.com)

# Art Department



Staci Child

[www.art-dept.com](http://www.art-dept.com)

# Art Department



Staci Child

[www.art-dept.com](http://www.art-dept.com)

# Art Department



Staci Child

[www.art-dept.com](http://www.art-dept.com)



# Art Department



C \* R \* A \* Z \* Y

S \* E \* X \* Y

C \* O \* O \* L

american designers are going wild this season with a clash of prints, technicolor fabrics, and loads and loads of accessories. *photographed by brooke nipa*

stylist: james m. rosenbhel, hair: steve obild at defacto for cutler salon using fredken, makeup: chryssie at top 5 management using nars cosmetics, models: dani trump and mina cvetkovic at suppre, stylist's assistants: lindsay hornyak and rachel keepicker, shot at sandbox studio, ny.

FROM LEFT: sweater by *shoshanna*, top by *shoshanna*, skirt by *frank tall*, large stone ring and ring beaded necklace by *anna dekkle*, silk ring and large beaded necklace by *stephen beas*, light by *an loue*, shoes: *vee* by *hollister collection*, sweater by *alfred dahl*, skirt by *lee*, by *lee* of *california*, shorts by *mla*, belt by *louis vuitton*, jewelry by *alston beas*.

161

## Staci Child

[www.art-dept.com](http://www.art-dept.com)

# Art Department



HAIR BY [unreadable]  
MAKEUP BY [unreadable]  
STYLING BY [unreadable]  
DRESS BY [unreadable]  
CARDIGAN BY [unreadable]  
BEANIE BY [unreadable]  
NECKLACES BY [unreadable]  
SHOES BY [unreadable]



TOP BY [unreadable]  
SKIRT BY [unreadable]  
LEGGINGS BY [unreadable]  
SHOES BY [unreadable]  
SUNGLASSES BY [unreadable]  
TOP BY [unreadable]  
SKIRT BY [unreadable]  
LEGGINGS BY [unreadable]  
SHOES BY [unreadable]  
SUNGLASSES BY [unreadable]

Staci Child

[www.art-dept.com](http://www.art-dept.com)



# Art Department



Staci Child

[www.art-dept.com](http://www.art-dept.com)

# Art Department



Staci Child

[www.art-dept.com](http://www.art-dept.com)

# Art Department



YHDISTÄ VALJIIN  
PAPPAMOUSUIMIIN  
PIUKKA YLKOSA.

Näkahousut 105 e,  
Rodebjer. Kaulako-  
rut 709 e ja 729 e,  
Iosselliani.

PITSI JA NAHKA  
OVAT KEVÄÄN  
LUOTTOMATERIAALIT.  
KÄYTÄ YKSIN  
TAI YHDISTELE  
ESTOITTA.

*Claudia Cifu kuvat Brooke Nisar*

## Staci Child

[www.art-dept.com](http://www.art-dept.com)

# Art Department



★  
ASUSTA SIMPPELI MUSTA  
MEKKO LUONHEKOSULLA  
JA ASENNEMEKILLÄ.

Mekko 530 e, Arne.  
Kaulakoru 709 e,  
Iosselliani.

## Staci Child

[www.art-dept.com](http://www.art-dept.com)

# Art Department



Staci Child

[www.art-dept.com](http://www.art-dept.com)



# Art Department



Staci Child

[www.art-dept.com](http://www.art-dept.com)

# Art Department



Staci Child

# Art Department



Staci Child

[www.art-dept.com](http://www.art-dept.com)

# Art Department



Staci Child

[www.art-dept.com](http://www.art-dept.com)

# Art Department



Staci Child

[www.art-dept.com](http://www.art-dept.com)

# Art Department



Staci Child

[www.art-dept.com](http://www.art-dept.com)

# Art Department



Staci Child

[www.art-dept.com](http://www.art-dept.com)

# Art Department



Staci Child

[www.art-dept.com](http://www.art-dept.com)



# Art Department



Staci Child

[www.art-dept.com](http://www.art-dept.com)