

# Art Department



Thomas Hintermeier

[www.art-dept.com](http://www.art-dept.com)

# Art Department



**YVES SAINT LAURENT**

Asymmetrical-close jacket and asymmetrical tiered skirt in grey tweed silk/wool with turquoise felt trim; turtleneck sweater in black extra-fine wool with over-the-hand thumb-hole cuffs. Jacket and skirt, sizes 34-44, France. Sweater, sizes P-L, Italy. Second Floor. Jacket \$2,590 Skirt \$1,630 Sweater \$690 Belt \$395 Boots \$1,240

Thomas Hintermeier

[www.art-dept.com](http://www.art-dept.com)

# Art Department

**FENDI** Jacket in black leather with ruffle, peplum and trim; turtleneck in charcoal wool; short skirt in charcoal wool. Sizes 4-10. Italy. Fendi Shop, Second Floor. Jacket \$9,740. Turtleneck \$720. Skirt \$790. Belt \$720. Boots \$1,280.

**OPPOSITE PRADA** Medium "Tessuto S" ruffle-top handbag in black nylon gabardine with zipper closure. 7 1/2" high x 13 1/2" wide x 6" deep. Italy. Main Floor. Handbag \$1,150.



## Thomas Hintermeier

[www.art-dept.com](http://www.art-dept.com)



# Art Department



Thomas Hintermeier

[www.art-dept.com](http://www.art-dept.com)



# Art Department



**PRADA** Lace-front  
ruffles-shoulder coat in  
black wool; button-back  
dickie in beige stretch  
silk; lace pencil skirt in  
black cotton/viscose/  
polyester. Coat, sizes  
36-44. Dickie, sizes  
38-44. Skirt, sizes  
36-46. Italy. Third  
Floor. Coat \$3,195  
Dickie \$395. Skirt  
\$1,195. Pumps \$750

## Thomas Hintermeier

[www.art-dept.com](http://www.art-dept.com)

# Art Department



**ROBERT RODRIGUEZ**

Peta-sleeve dress in black polyester/viscose with satin trim. Sizes 0-12. Imported. Fifth Floor. Dress \$395

**OPPOSITE MARC JACOBS**

Off-the-shoulder coat in taupe wool/alpaca; dolman-sleeve blouse in slate wool/silk radsimir. Coat sizes 0-10. Blouse, sizes 2-8. USA. Third Floor. Coat \$4,300. Blouse \$1,400

## Thomas Hintermeier

[www.art-dept.com](http://www.art-dept.com)

# Art Department



Thomas Hintermeier

[www.art-dept.com](http://www.art-dept.com)



# Art Department



Thomas Hintermeier

[www.art-dept.com](http://www.art-dept.com)

# Art Department



VESTE VIOLETTE EN LAINE  
ET RENARD ET SANDALES OR GUCCI;  
COMBINAISON D'AVIATEUR WHAT  
COMES AROUND GOES  
AROUND. À DROITE : ROBE EN  
DENTELLE ET STRASS SWAROVSKI DOLCE  
& GABBANA; HARNAIS  
ET CEINTURE SURPLUS DE L'ARMÉE.

## Thomas Hintermeier

[www.art-dept.com](http://www.art-dept.com)

# Art Department



Thomas Hintermeier

[www.art-dept.com](http://www.art-dept.com)



# Art Department



Thomas Hintermeier

[www.art-dept.com](http://www.art-dept.com)

# Art Department



Thomas Hintermeier

[www.art-dept.com](http://www.art-dept.com)

# Art Department



Thomas Hintermeier

[www.art-dept.com](http://www.art-dept.com)



# Art Department



Thomas Hintermeier

[www.art-dept.com](http://www.art-dept.com)

# Art Department



Thomas Hintermeier

[www.art-dept.com](http://www.art-dept.com)

# Art Department



Thomas Hintermeier

[www.art-dept.com](http://www.art-dept.com)



# Art Department



Thomas Hintermeier

[www.art-dept.com](http://www.art-dept.com)

# Art Department

Jacquetta wears T-shirt by Calvin Klein,  
stylist's own; jeans by ck Calvin Klein.

PHOTOGRAPHY BY MATT JONES  
STYLING BY KATE YOUNG

Hair by Thomas Hintermeier at Garren, NY  
Make-up by Lena Koro at Garren, NY  
Production and casting by Julius Poole at MAG  
Models: Caroline Ribiero at Marilyn; Amanda Moore  
and Noa at Next; Jacquetta, Liisa Winkler, Liya,  
and Anouk at IMG; Emily at Major; Erin at Ford,  
Arlette and Bianca at NY Models; Danielle at  
Women; Noa at Next  
Shot at Pier 59 Studios; thanks to Glen

**I've never met  
a person I  
couldn't call  
a beauty**

Thomas Hintermeier

[www.art-dept.com](http://www.art-dept.com)

# Art Department

Lisa wears dress by Jil Sander; trousers  
by Lost Art; bracelet by Tom Binns.



## Thomas Hintermeier

[www.art-dept.com](http://www.art-dept.com)



# Art Department

Anouck wears dress by Tom Ford for Gucci.



Thomas Hintermeier

[www.art-dept.com](http://www.art-dept.com)

# Art Department

Danielle wears corset by Alexander  
McQueen; shoes by Sergio Rossi.

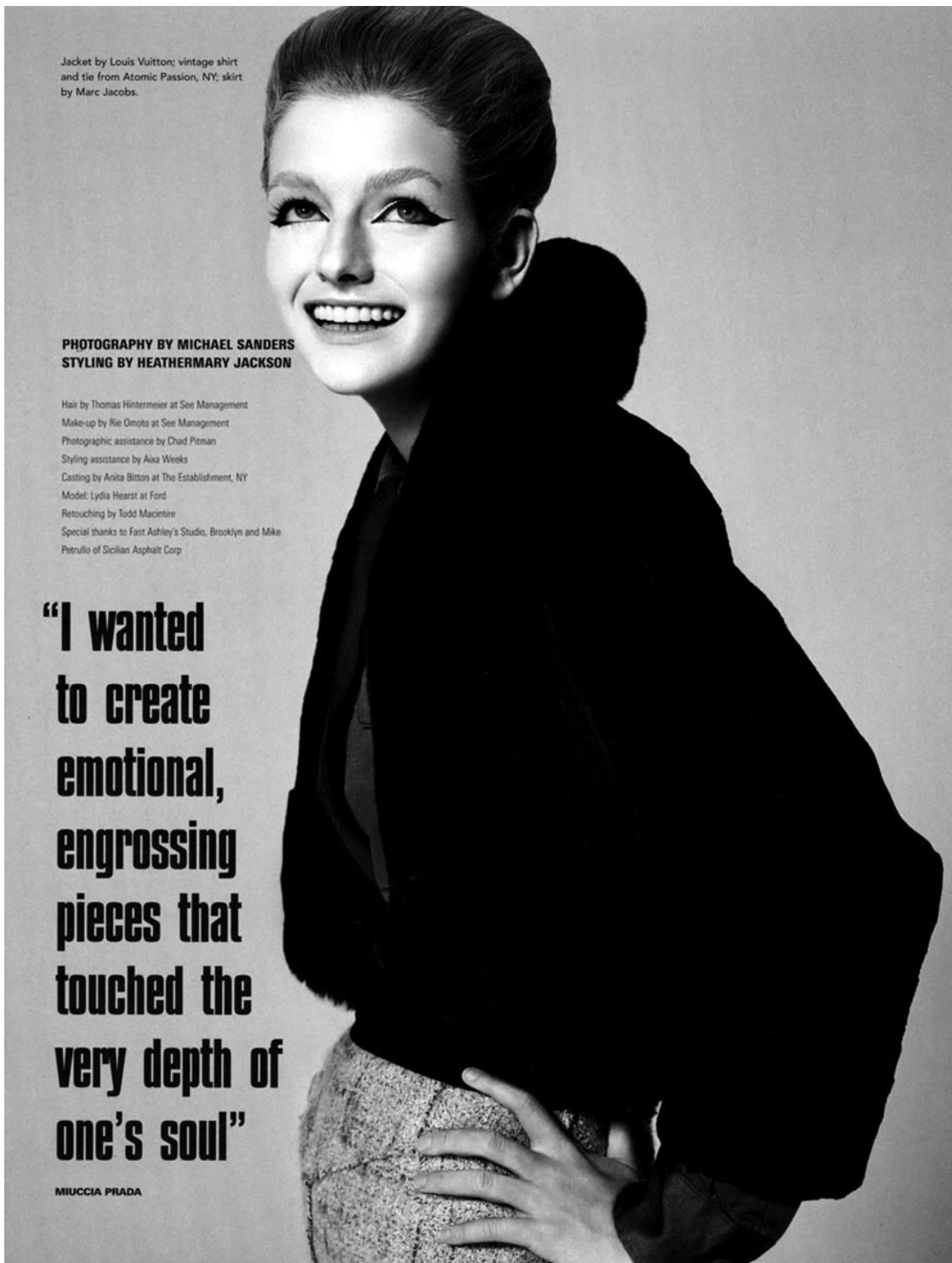


I-D THE SITTING ISSUE 217

## Thomas Hintermeier

[www.art-dept.com](http://www.art-dept.com)

# Art Department



Jacket by Louis Vuitton; vintage shirt and tie from Atomic Passion, NY; skirt by Marc Jacobs.

**PHOTOGRAPHY BY MICHAEL SANDERS  
STYLING BY HEATHERMARY JACKSON**

Hair by Thomas Hintermeier at See Management  
Make-up by Rie Omoto at See Management  
Photographic assistance by Chad Pitman  
Styling assistance by Aixa Weeks  
Casting by Anita Bitton at The Establishment, NY  
Model: Lydia Hearst at Ford  
Retouching by Todd Macintire  
Special thanks to Fast Ashley's Studio, Brooklyn and Mike Petruccio of Sicilian Asphalt Corp

**“I wanted to create emotional, engrossing pieces that touched the very depth of one’s soul”**

MIUCCIA PRADA

Thomas Hintermeier

[www.art-dept.com](http://www.art-dept.com)



# Art Department



Thomas Hintermeier

[www.art-dept.com](http://www.art-dept.com)

# Art Department



Thomas Hintermeier

[www.art-dept.com](http://www.art-dept.com)



# Art Department



Thomas Hintermeier

[www.art-dept.com](http://www.art-dept.com)



# Art Department



Thomas Hintermeier

[www.art-dept.com](http://www.art-dept.com)

# Art Department



Thomas Hintermeier

[www.art-dept.com](http://www.art-dept.com)



# Art Department



Thomas Hintermeier

[www.art-dept.com](http://www.art-dept.com)



# Art Department



Thomas Hintermeier

[www.art-dept.com](http://www.art-dept.com)

# Art Department



Thomas Hintermeier

[www.art-dept.com](http://www.art-dept.com)



# Art Department



Thomas Hintermeier

[www.art-dept.com](http://www.art-dept.com)



# Art Department



Thomas Hintermeier

[www.art-dept.com](http://www.art-dept.com)

# Art Department



## Vitamin C

Orange nail polish hasn't been this popular since Tang went to the Moon. Dark, metallic colors look best with most skin tones. Shades that are more red than citrus, applied in only one coat, are a little more subtle. Automatic Orange nail polish by Christian Dior. These pages: Makeup, Virginia Young; hair, Thomas Hintermeier; manicure, Sheril Bailey. Prop stylist: Jocelyn Beaudoin. Fashion editor: Paul Cavaco.

PHOTOGRAPHED BY RICHARD BURBRIDGE

## Thomas Hintermeier

[www.art-dept.com](http://www.art-dept.com)



# Art Department



## Splash Cooler

No matter what shade the lipstick, lips look better and more summery when they're a little wet. "Take a bright color—red, orange, or fuchsia—blot it to produce just a stain, and apply a clear gloss," says Barneys New York makeup artist Jose Parrón. Then skip color and heavy makeup on the rest of the face. Watermelon Fizz lipstick and Fizz lip gloss by Estée Lauder. Nylon Lycra tank by Calvin Klein. Details, see Credits page.

111

## Thomas Hintermeier

[www.art-dept.com](http://www.art-dept.com)



# Art Department



Thomas Hintermeier

[www.art-dept.com](http://www.art-dept.com)

# Art Department



Thomas Hintermeier

[www.art-dept.com](http://www.art-dept.com)



# Art Department



PLEATED DRESS BY **DKNY**; TULLE SKIRT  
(WORN UNDERNEATH) BY **KENZO**; BLACK COTTON  
SASH BY **CHER MICHEL KLEIN**; HORSEHAIR  
BELT BY **HELMUT LANG**; BOOTS BY  
**BALENCIAGA** BY **NICOLAS GHESQUIERE**

374 ANOTHER MAGAZINE

## Thomas Hintermeier

[www.art-dept.com](http://www.art-dept.com)



# Art Department



Thomas Hintermeier

[www.art-dept.com](http://www.art-dept.com)

# Art Department



Thomas Hintermeier

[www.art-dept.com](http://www.art-dept.com)

# Art Department

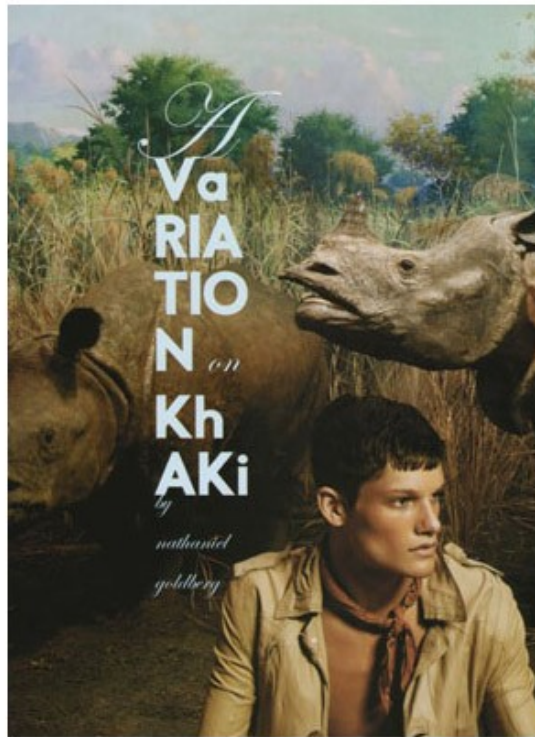


Thomas Hintermeier

[www.art-dept.com](http://www.art-dept.com)



# Art Department



Thomas Hintermeier

[www.art-dept.com](http://www.art-dept.com)

# Art Department



This page: Coat, shirt,  
and tie by Emporio Armani.  
Watch by Cartier, Ring  
by Louis Vuitton.  
Opposite: Jacket (part of  
a suit) by Kenneth Cole, Shirt  
by Louis Vuitton, Tie by  
Ralph Lauren Purple Label.

## Thomas Hintermeier

[www.art-dept.com](http://www.art-dept.com)

# Art Department



This page: Coat and suit  
by Calvin Klein. Sweater by  
Gran Sasso. Shirt and tie  
by Hermès. Opposite: Coat  
by Dolce & Gabbana. Suit  
by Yves Saint Laurent Rive  
Gauche. Shirt by Lorenzini.  
Tie by Boss Hugo Boss.

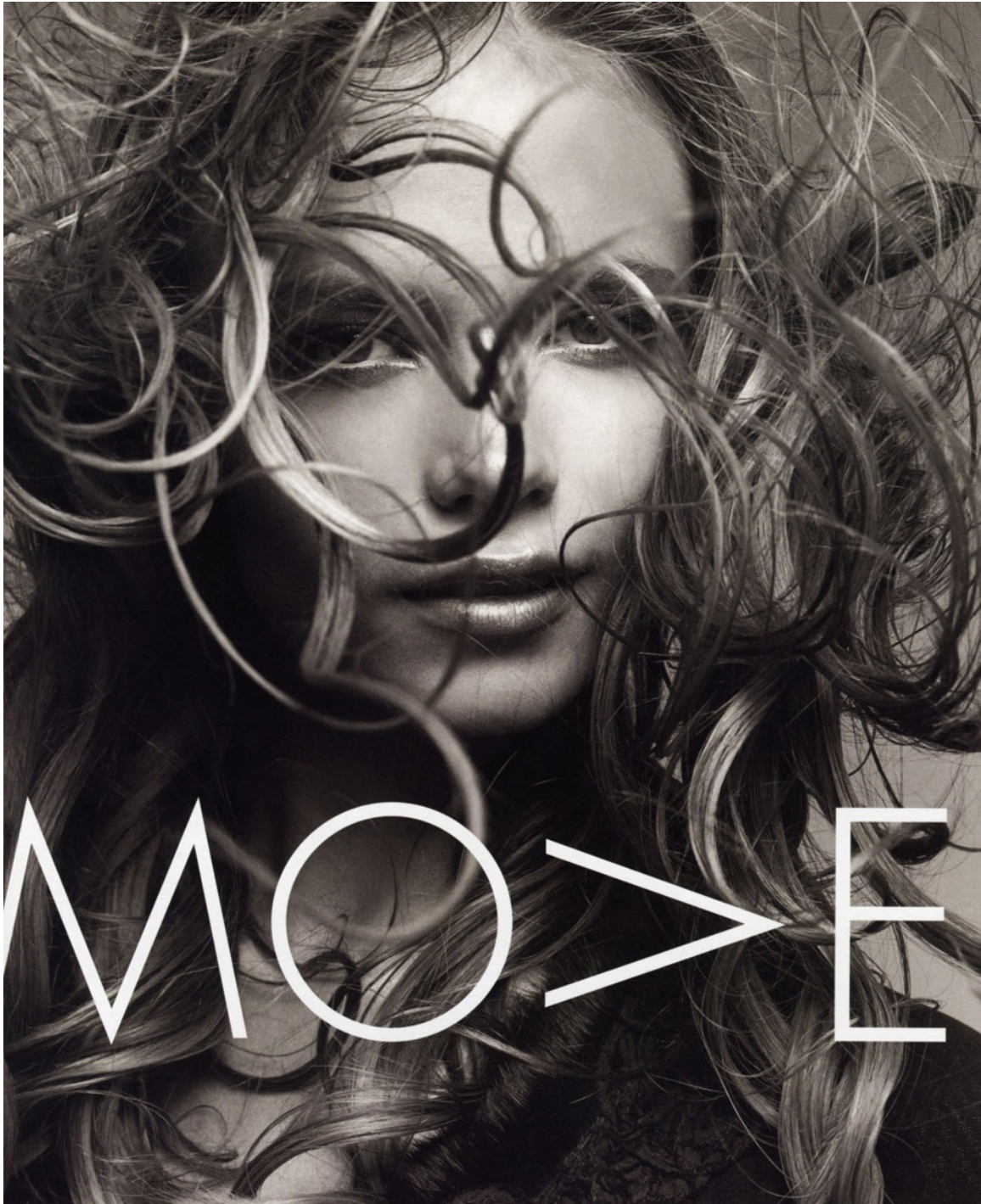
Styling by Andrew Davis.  
Fashion assistant: Edward Webb-Ingall.  
Hair by Thomas Hintermeier at  
See Management.  
Makeup by Mariel Barrera at JOE.  
Props by Jill Nicholls at Magnet NY.  
For store information, see page 91.

## Thomas Hintermeier

[www.art-dept.com](http://www.art-dept.com)



# Art Department



Thomas Hintermeier

[www.art-dept.com](http://www.art-dept.com)

# Art Department



Thomas Hintermeier

[www.art-dept.com](http://www.art-dept.com)



# Art Department



クールなミュージズ。

エッジを利かせたネイヴィー・ルック  
で華奢ランウェイを制覇したバ  
レンシアガ。はだけたストライプの  
シャツにゴールドボタンを飾った  
コートを羽織って、タフなセクシ  
ーな女神になる。コート インナー  
ともに参考価格 パンツ ¥207,900  
/ BALENCIAGA BY NICOLAS  
GHESQUIÈRE (フロレント) 髪  
につけたピン/スタイリスト私物

075 Vogue X Japan

## Thomas Hintermeier

[www.art-dept.com](http://www.art-dept.com)



# Art Department



## ビューティ・キャプテン。

メンズライクなネイヴィ・ルックをチャームングに昇華。そこから覗くレースのベチコートが、可愛くセクシーに誘って。白のラインを施したフレアミニスカート/ALEXANDER McQUEEN ダブルジャケット ¥59,850 / Y'S (ヨウジヤマモト) 靴 参考商品 / BALENCIAGA BY NICOLAS GHESSQUIÈRE (フロレント) ソックス/スタイリスト私物 帽子 / KAUFMAN'S ARMY & NAVY

073 Vogue Japan

## Thomas Hintermeier

[www.art-dept.com](http://www.art-dept.com)

# Art Department



Thomas Hintermeier

[www.art-dept.com](http://www.art-dept.com)

# Art Department



Thomas Hintermeier

[www.art-dept.com](http://www.art-dept.com)



# Art Department



Thomas Hintermeier

[www.art-dept.com](http://www.art-dept.com)

# Art Department



Thomas Hintermeier

[www.art-dept.com](http://www.art-dept.com)

# Art Department



Thomas Hintermeier

[www.art-dept.com](http://www.art-dept.com)



# Art Department



*Top en soie bois de rose  
à grand col drapé décané,  
Martine Sitbon.  
Pantalon large, Yohji  
Yamamoto. Bague, Yves  
Saint Laurent Rise  
Gauche.*

## Thomas Hintermeier

[www.art-dept.com](http://www.art-dept.com)

# Art Department



*Veste en velours Stretch  
et jupe en satin à  
empiècement de dentelle,  
Yves Saint Laurent Rive  
Gauche, Chaussures,  
Luisa Beccaria.*

## Thomas Hintermeier

[www.art-dept.com](http://www.art-dept.com)

# Art Department



Thomas Hintermeier

[www.art-dept.com](http://www.art-dept.com)



# Art Department



Thomas Hintermeier

[www.art-dept.com](http://www.art-dept.com)

# Art Department



Thomas Hintermeier

[www.art-dept.com](http://www.art-dept.com)



# Art Department



Thomas Hintermeier

[www.art-dept.com](http://www.art-dept.com)



# Art Department



Thomas Hintermeier

[www.art-dept.com](http://www.art-dept.com)

# Art Department



Thomas Hintermeier

[www.art-dept.com](http://www.art-dept.com)

# Art Department



Thomas Hintermeier

[www.art-dept.com](http://www.art-dept.com)



# Art Department



Thomas Hintermeier

[www.art-dept.com](http://www.art-dept.com)

# Art Department



Thomas Hintermeier

[www.art-dept.com](http://www.art-dept.com)





# Art Department



Thomas Hintermeier

[www.art-dept.com](http://www.art-dept.com)

# Art Department



Thomas Hintermeier

[www.art-dept.com](http://www.art-dept.com)

# Art Department



Thomas Hintermeier

[www.art-dept.com](http://www.art-dept.com)



# Art Department



Thomas Hintermeier

[www.art-dept.com](http://www.art-dept.com)

# Art Department



Thomas Hintermeier

[www.art-dept.com](http://www.art-dept.com)

# Art Department



Thomas Hintermeier

[www.art-dept.com](http://www.art-dept.com)



# Art Department



Thomas Hintermeier

[www.art-dept.com](http://www.art-dept.com)

# Art Department



Thomas Hintermeier

[www.art-dept.com](http://www.art-dept.com)