

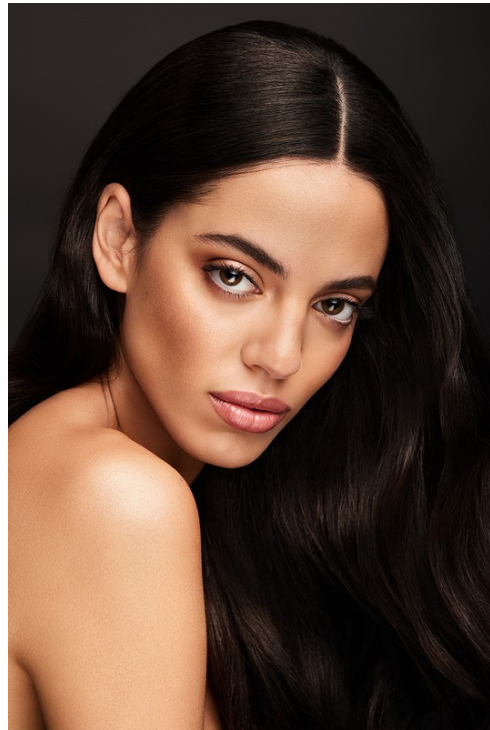
# Art Department



Fredy Anaya

[www.art-dept.com](http://www.art-dept.com)

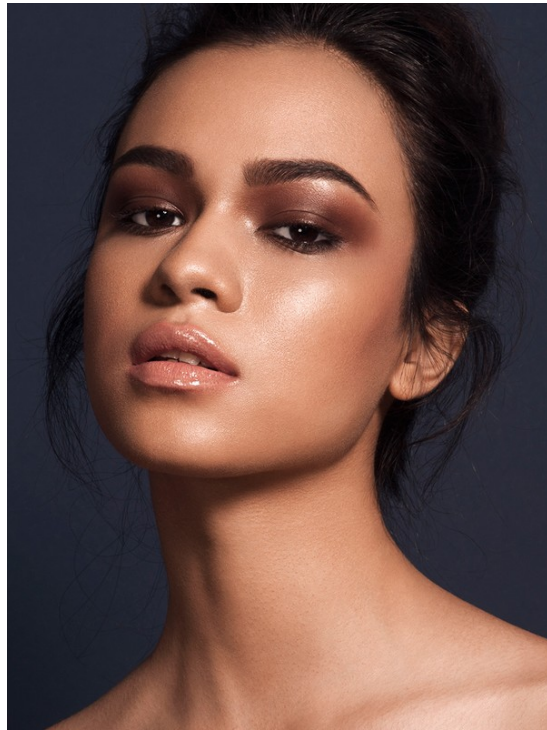
# Art Department



Fredy Anaya

[www.art-dept.com](http://www.art-dept.com)

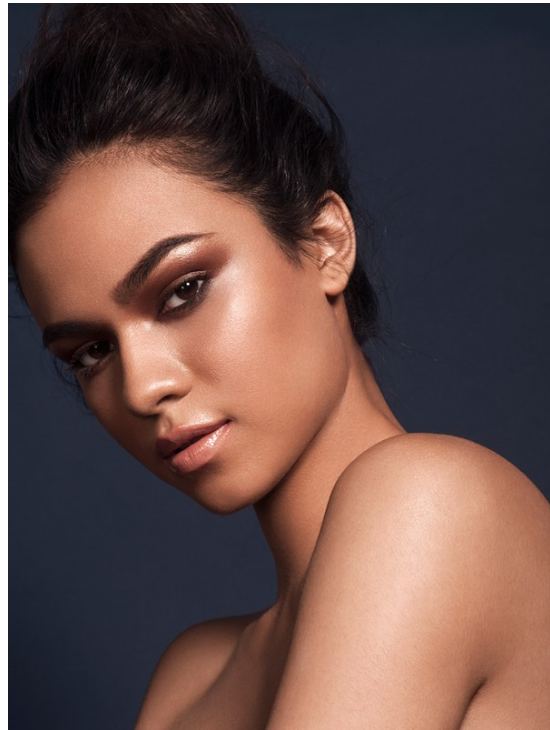
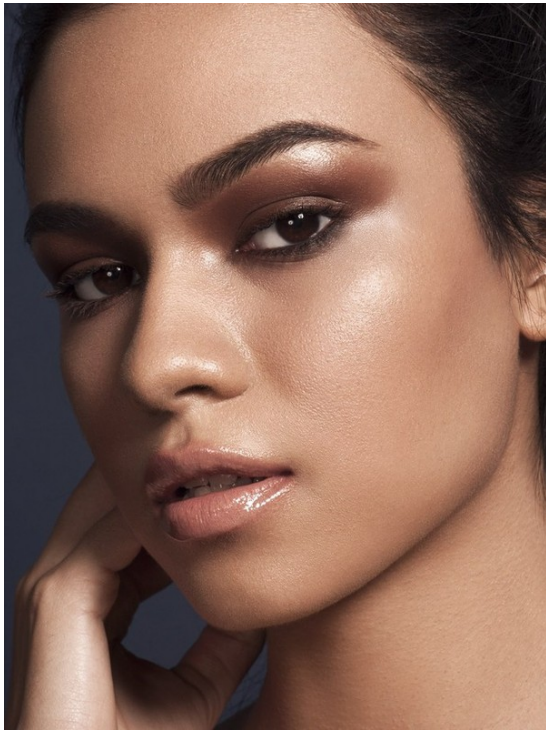
# Art Department



Fredy Anaya

[www.art-dept.com](http://www.art-dept.com)

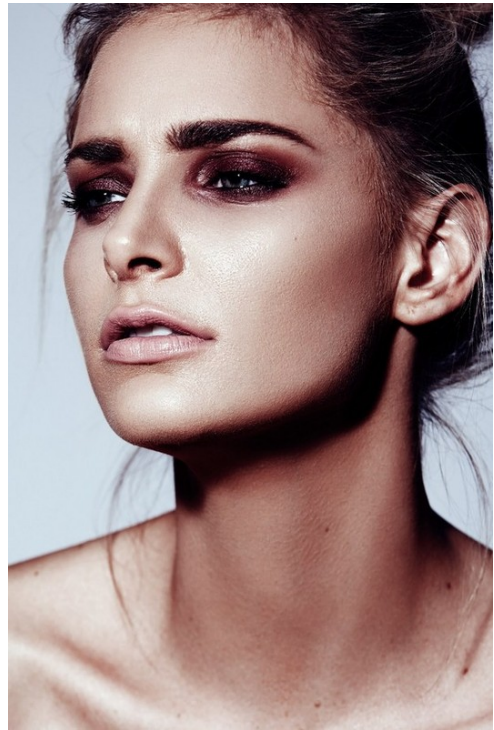
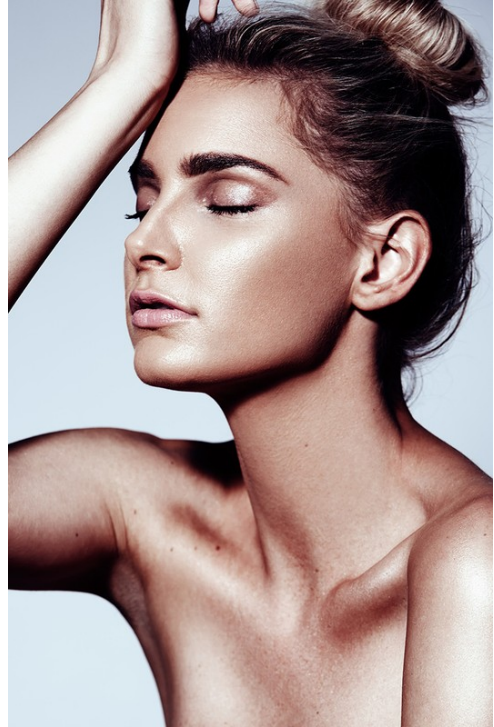
# Art Department



Fredy Anaya

[www.art-dept.com](http://www.art-dept.com)

# Art Department



Fredy Anaya

[www.art-dept.com](http://www.art-dept.com)

# Art Department



Eyes: Naked Liner Waterline, Mic Cream and Primer applied with Naked Bronz, Tan Perf. Show Icon Mascara Overcut, Dior.

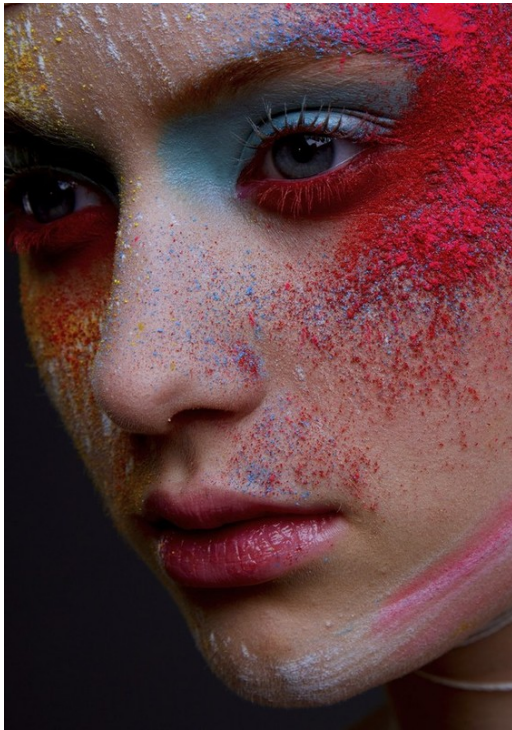


Fredy Anaya

[www.art-dept.com](http://www.art-dept.com)



# Art Department



Fredy Anaya

[www.art-dept.com](http://www.art-dept.com)



# Art Department



Fredy Anaya

[www.art-dept.com](http://www.art-dept.com)

# Art Department



Fredy Anaya

[www.art-dept.com](http://www.art-dept.com)

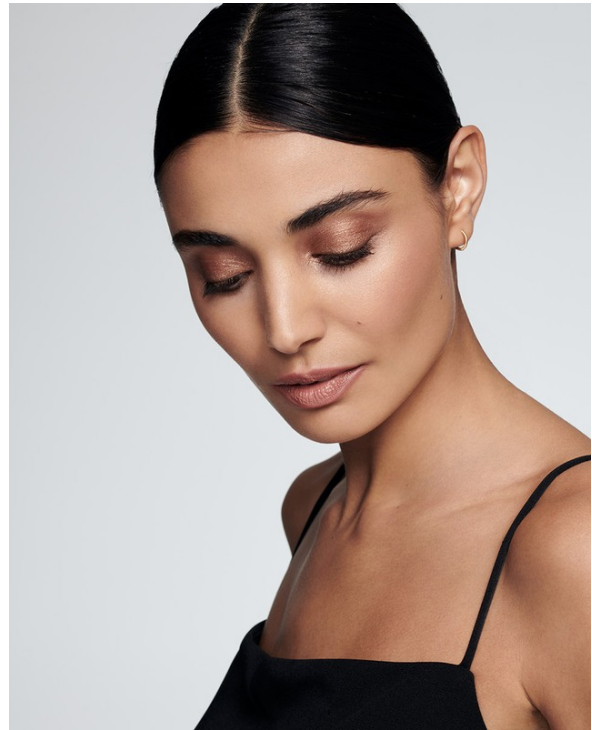
# Art Department



Fredy Anaya

[www.art-dept.com](http://www.art-dept.com)

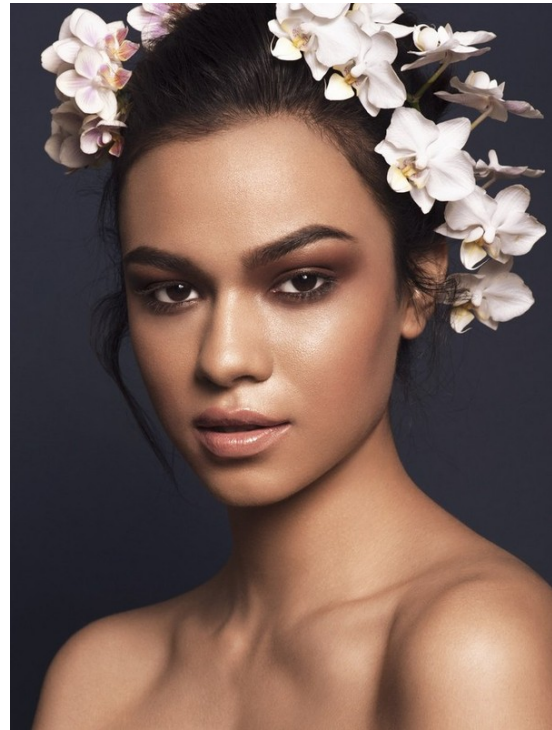
# Art Department



Fredy Anaya

[www.art-dept.com](http://www.art-dept.com)

# Art Department



Fredy Anaya

[www.art-dept.com](http://www.art-dept.com)

# Art Department



Fredy Anaya

[www.art-dept.com](http://www.art-dept.com)