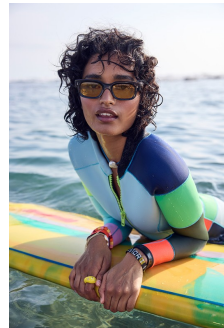
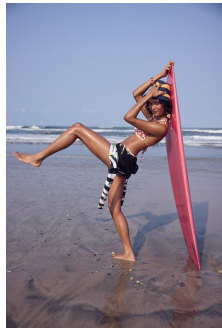
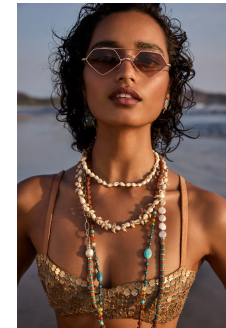
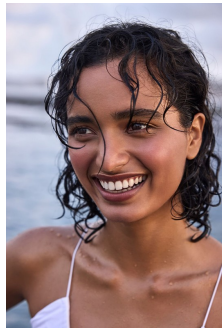


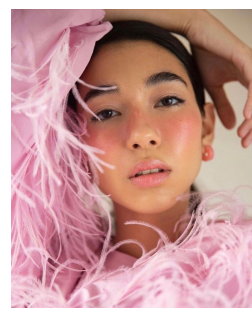
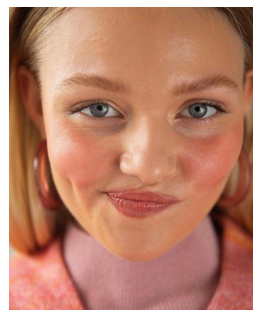
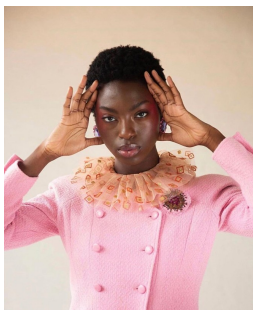
Art Department



Rachel Leidig

www.art-dept.com

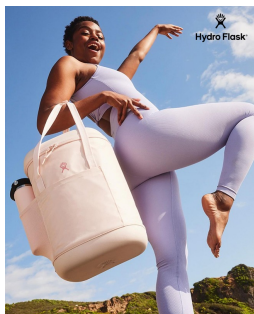
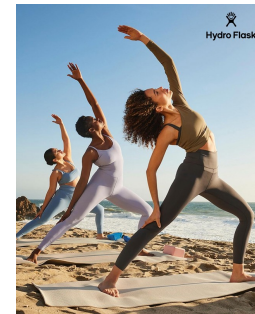
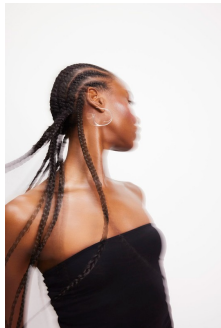
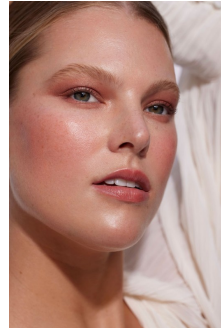
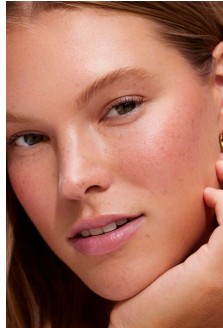
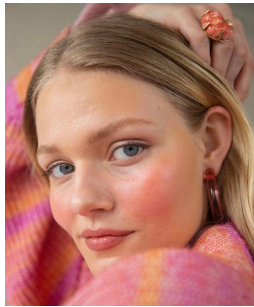
Art Department



Rachel Leidig

www.art-dept.com

Art Department

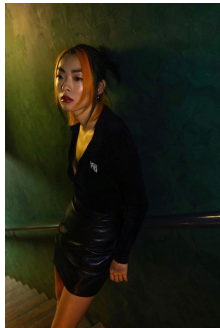


Rina Sawayama on Her Wildly Eclectic and Disarmingly Personal Debut Album

In this Rising interview, the London pop rebel talks about ascending her past through music that altbers and thrashes in equal measure.



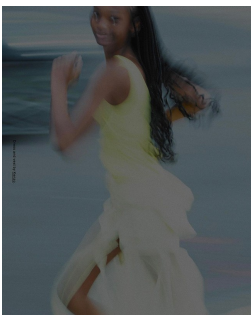
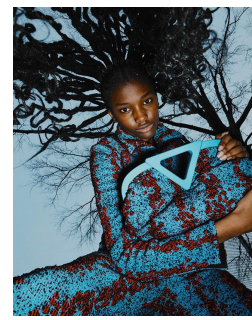
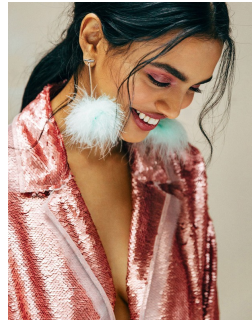
Photos by Allison Propper



Rachel Leidig

www.art-dept.com

Art Department



Rachel Leidig

www.art-dept.com

Art Department



Rachel Leidig

www.art-dept.com

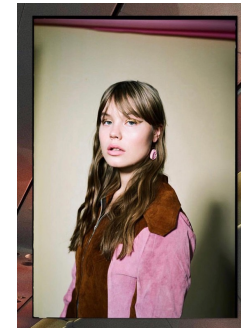
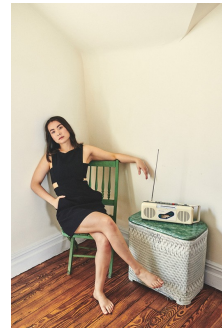
Art Department



Rachel Leidig

www.art-dept.com

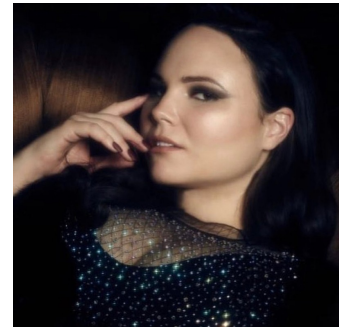
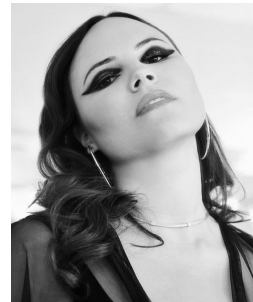
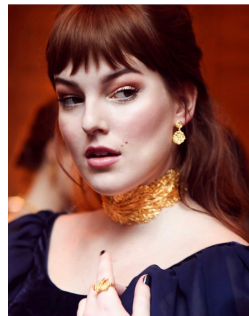
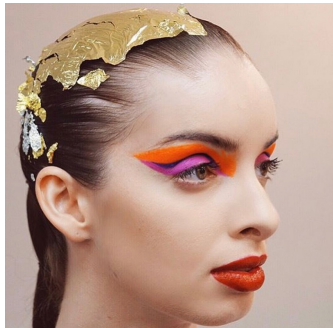
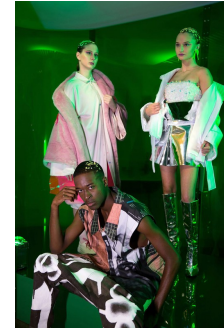
Art Department



Rachel Leidig

www.art-dept.com

Art Department



Rachel Leidig

www.art-dept.com

Art Department



Rachel Leidig

www.art-dept.com