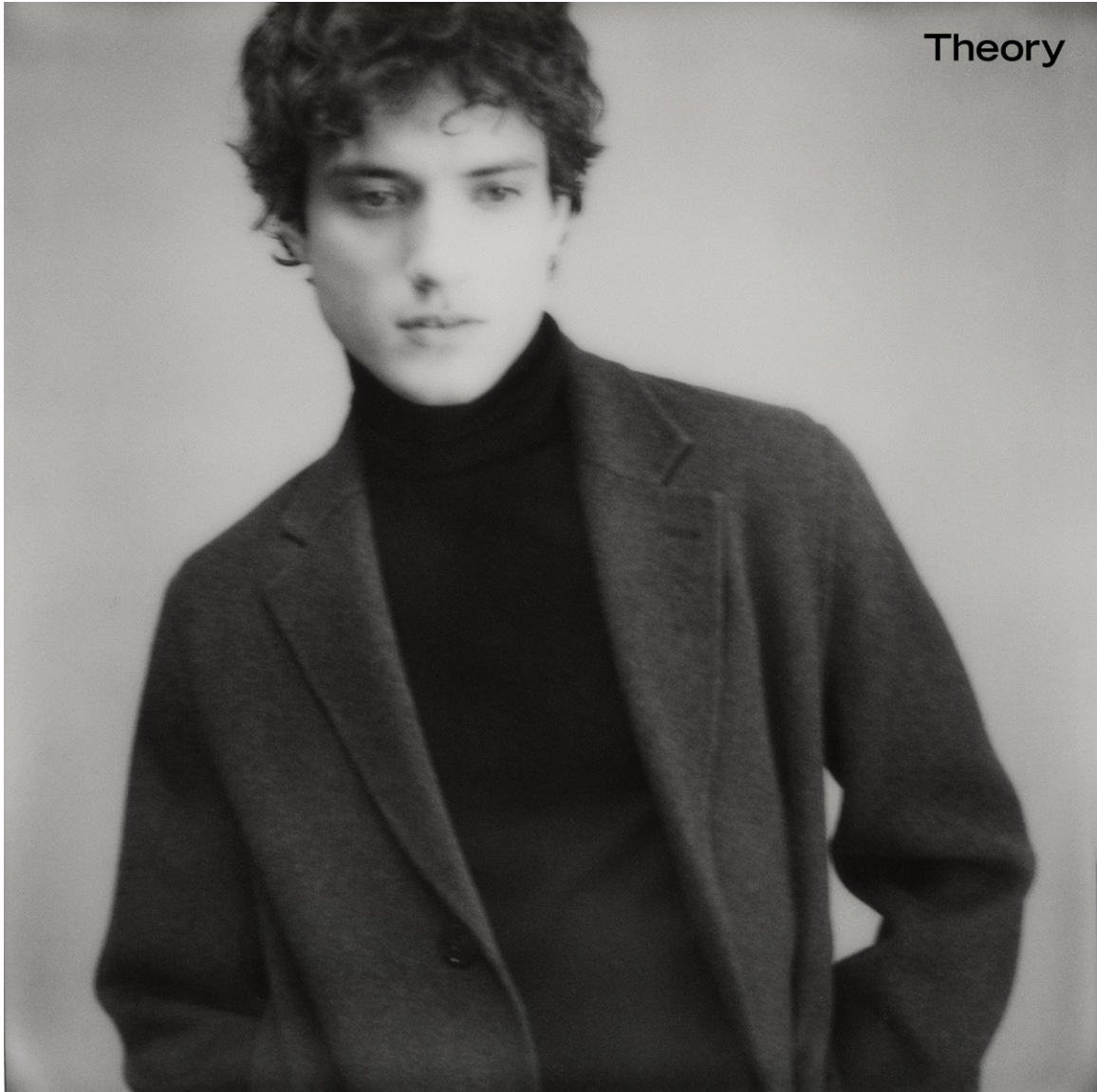


# Art Department



Rebecca Plymate

[www.art-dept.com](http://www.art-dept.com)

# Art Department



Rebecca Plymate

[www.art-dept.com](http://www.art-dept.com)

# Art Department



Rebecca Plymate

[www.art-dept.com](http://www.art-dept.com)



# Art Department



Rebecca Plymate

[www.art-dept.com](http://www.art-dept.com)



# Art Department



Rebecca Plymate

[www.art-dept.com](http://www.art-dept.com)

# Art Department



Rebecca Plymate

[www.art-dept.com](http://www.art-dept.com)



# Art Department



Rebecca Plymate

[www.art-dept.com](http://www.art-dept.com)



# Art Department



Rebecca Plymate

[www.art-dept.com](http://www.art-dept.com)

# Art Department



Rebecca Plymate

[www.art-dept.com](http://www.art-dept.com)



# Art Department



Rebecca Plymate

[www.art-dept.com](http://www.art-dept.com)



# Art Department



Rebecca Plymate

[www.art-dept.com](http://www.art-dept.com)

# Art Department



Rebecca Plymate

[www.art-dept.com](http://www.art-dept.com)

# Art Department



Rebecca Plymate

[www.art-dept.com](http://www.art-dept.com)



# Art Department



Scarf JOHN VARVATOS  
hooded sweater GENERAL IDEA  
jacket ROBERT GELLER  
vest DOLCE & GABBANA  
T-shirt ROBERT GELLER

- 126 -

- 127 -

## Rebecca Plymate

[www.art-dept.com](http://www.art-dept.com)

# Art Department

---

## PENN BADGLEY

GOSSIP GIRL STAR DISCUSSES SOGWRITING,  
SOCCER, AND WHAT COMES NEXT

INTERVIEW by BEC COUCHE  
PHOTOGRAPHY by KURT ISWARIENKO



Tank Top by ROBERT GELLER  
Slim Fit Classic Shirt by MARC JACOBS  
Tapered Leg Utility Trousers by BURBERRY  
Laceless Wingtip by FLORESHEIM by DUCKIE BROWN  
Vintage TISSOT Watch

## Rebecca Plymate

[www.art-dept.com](http://www.art-dept.com)

# Art Department



Double Breasted Heirloom Suit by BILLY REID  
T-shirt by ROBERT GELLER SECONDS  
Pocket Scarf by TWEEN

## Rebecca Plymate

[www.art-dept.com](http://www.art-dept.com)



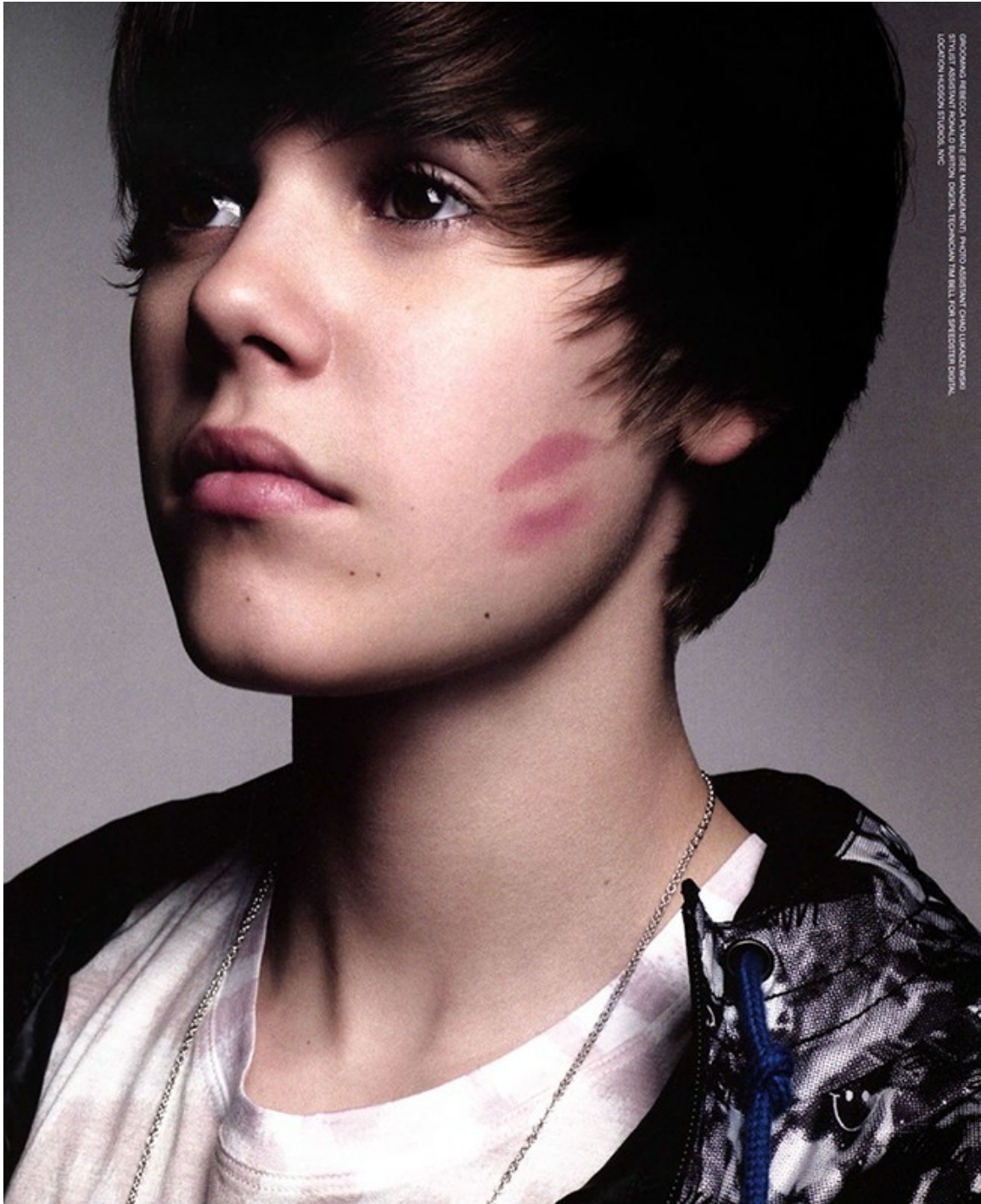
# Art Department



Rebecca Plymate

[www.art-dept.com](http://www.art-dept.com)

# Art Department



GRACIAS REBECCA PLYMATE ART MANAGEMENT PHOTO ASSISTANT GARY LAMARCA  
STYLING ASSISTANT PAULINA BERTON DRESSING TECHNICIAN TINA BELL FOR STEPHEN DORRILL  
LOCATION NISSAN BUILDING, NYC

Rebecca Plymate

[www.art-dept.com](http://www.art-dept.com)



# Art Department



## JUSTIN BIEBER

### 100 MILLION YOUTUBE VIEWS

Justin Bieber shows up to the shoot with a bright-red lipstick kiss on his left cheek. "Rihanna gave that to me," he announces unprompted, flashing a million dollar grin. At 15-years-old, he is having the time of his life.

Less than two years ago he was just a kid, sitting at home in Ontario, Canada, posting videos of himself singing on YouTube. "I never knew it was gonna be a big thing," he laughs. "I started posting, and then like a month and a half

later, a lot, like tons, of viewers were coming in."

Soon he had a manager. Then he was being flown to Atlanta where Usher signed him to Island. Sure, he doesn't get to see his friends as much as he might like, but Bieber is the type of kid who, when he's hanging out with Taylor Swift, Diddy, and Justin Timberlake, doesn't suffer from too much homesickness.

Over the last year, he's spent a lot of time in Atlanta working with his team on his first two albums, the second of which comes out in March. There wasn't much he needed

to be taught musically (his old pre-celebrity videos are still on YouTube, and he was just as good then as he is now), but he has picked up something of a Hotlanta edge. "I'm just a kid so I can rock whatever," he says in an accent more Southern than Canadian. "In the last year I think I've developed my slye a little, as I've built up my swagger."

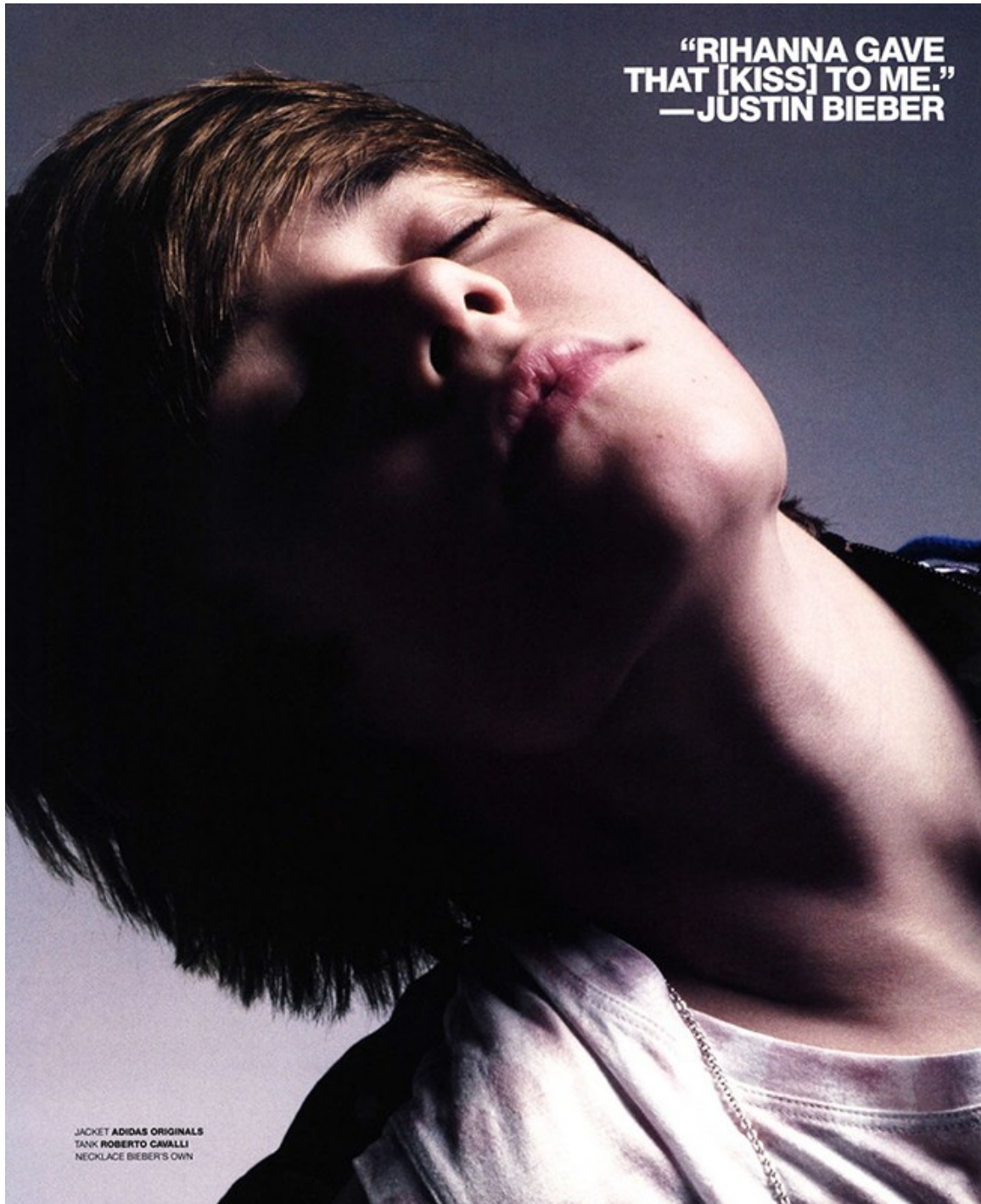
**STYLING YUKI JAMES**  
**JACKET ADIDAS ORIGINALS**  
**TANK ROBERTO CAVALLI**

## Rebecca Plymate

[www.art-dept.com](http://www.art-dept.com)



# Art Department



Rebecca Plymate

[www.art-dept.com](http://www.art-dept.com)

# Art Department



Rebecca Plymate

[www.art-dept.com](http://www.art-dept.com)

# Art Department

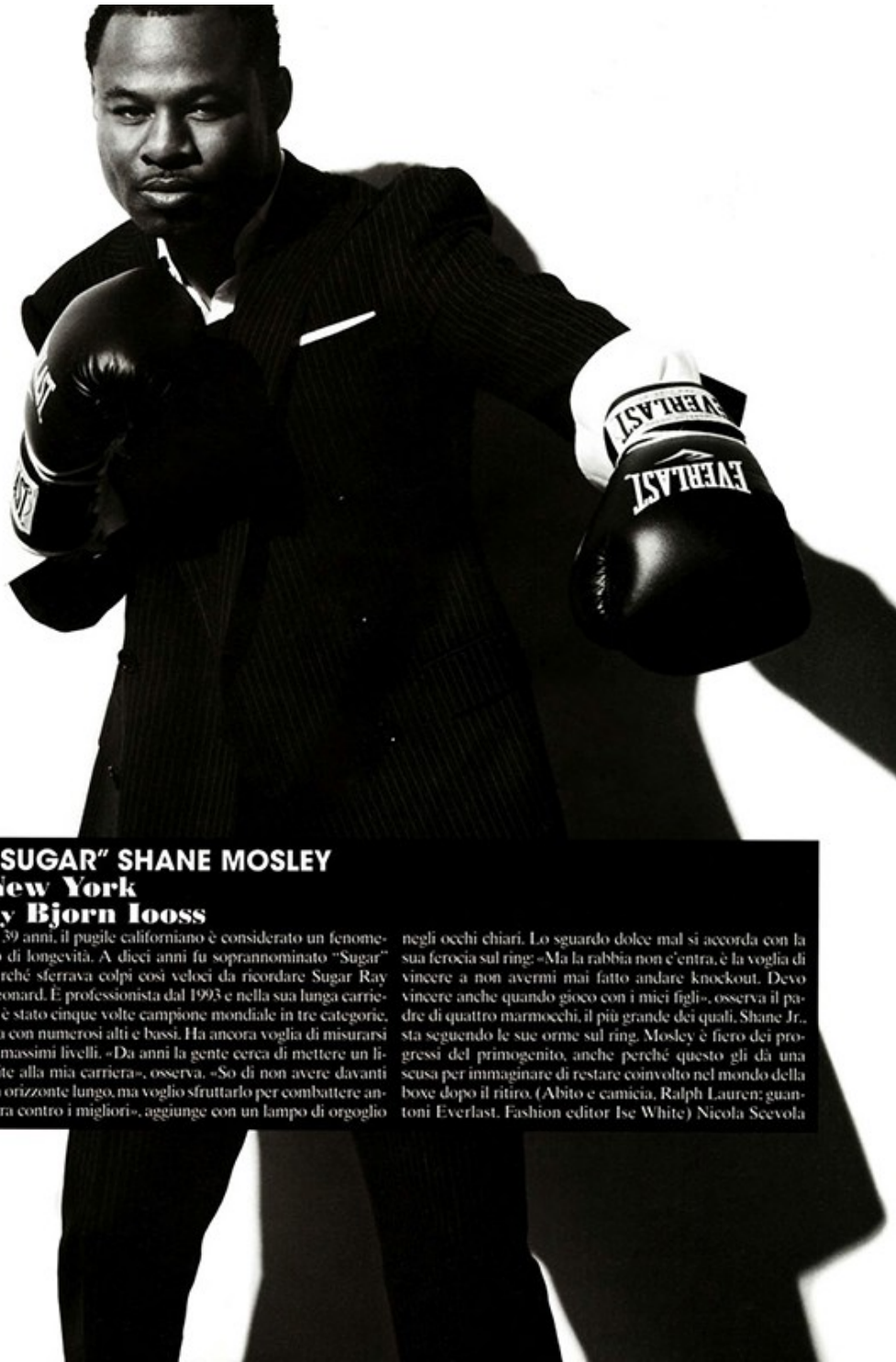


Rebecca Plymate

[www.art-dept.com](http://www.art-dept.com)



# Art Department



## **"SUGAR" SHANE MOSLEY** **New York** **by Bjorn Iooss**

A 39 anni, il pugile californiano è considerato un fenomeno di longevità. A dieci anni fu soprannominato "Sugar" perché sferrava colpi così veloci da ricordare Sugar Ray Leonard. È professionista dal 1993 e nella sua lunga carriera è stato cinque volte campione mondiale in tre categorie, ma con numerosi alti e bassi. Ha ancora voglia di misurarsi ai massimi livelli. «Da anni la gente cerca di mettere un limite alla mia carriera», osserva. «So di non avere davanti un orizzonte lungo, ma voglio sfruttarlo per combattere ancora contro i migliori», aggiunge con un lampo di orgoglio

negli occhi chiari. Lo sguardo dolce mal si accorda con la sua ferocia sul ring: «Ma la rabbia non c'entra, è la voglia di vincere a non avermi mai fatto andare knockout. Devo vincere anche quando gioco con i miei figli», osserva il padre di quattro marmocchi, il più grande dei quali, Shane Jr., sta seguendo le sue orme sul ring. Mosley è fiero dei progressi del primogenito, anche perché questo gli dà una scusa per immaginare di restare coinvolto nel mondo della boxe dopo il ritiro. (Abito e camicia, Ralph Lauren; guanti Everlast. Fashion editor Ise White) Nicola Scevola

## Rebecca Plymate

[www.art-dept.com](http://www.art-dept.com)

# Art Department



Rebecca Plymate

[www.art-dept.com](http://www.art-dept.com)

# Art Department



Rebecca Plymate

[www.art-dept.com](http://www.art-dept.com)



# Art Department



Rebecca Plymate

[www.art-dept.com](http://www.art-dept.com)

# Art Department



Rebecca Plymate

[www.art-dept.com](http://www.art-dept.com)

# Art Department

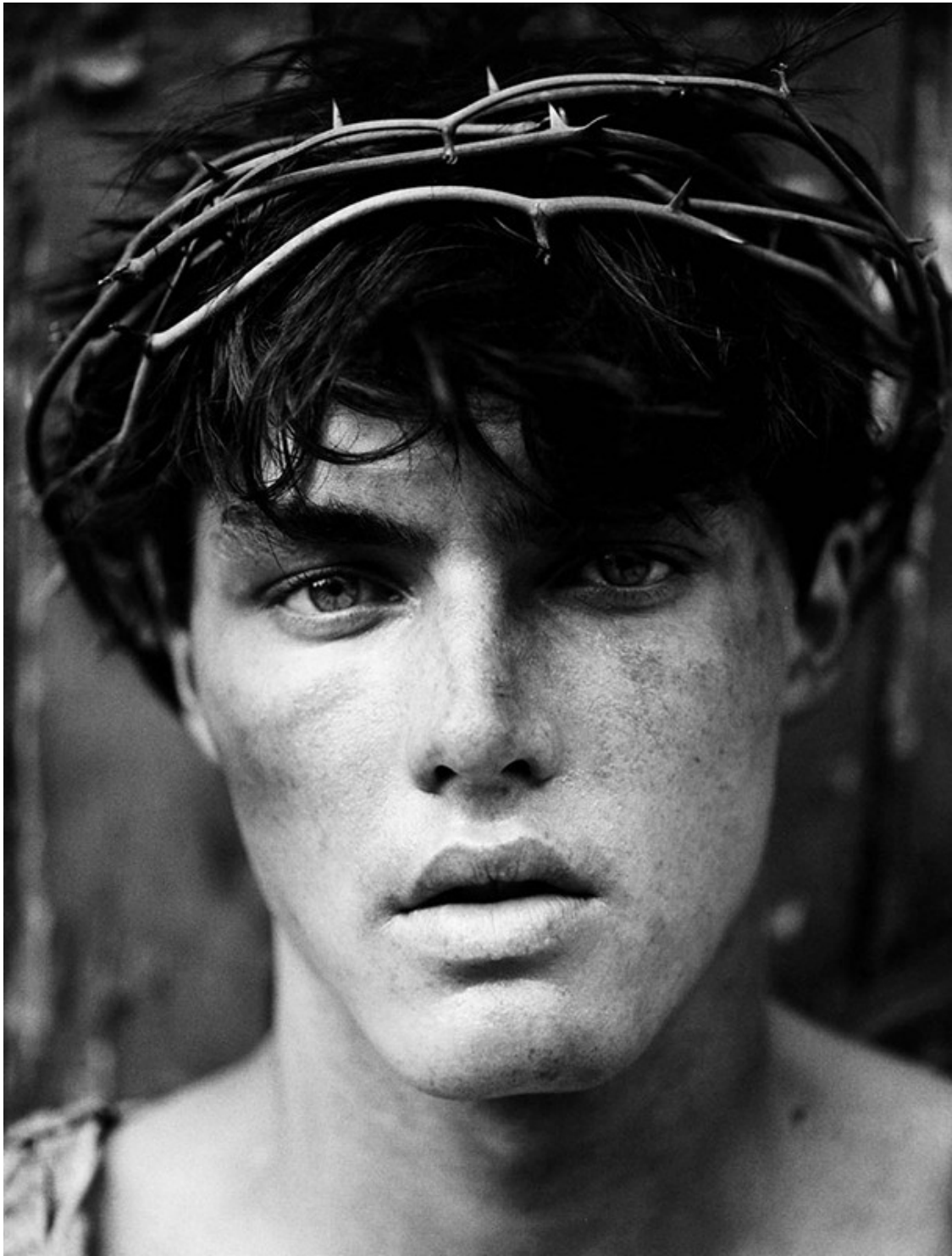


Rebecca Plymate

[www.art-dept.com](http://www.art-dept.com)



# Art Department



Rebecca Plymate

[www.art-dept.com](http://www.art-dept.com)

# Art Department



Rebecca Plymate

[www.art-dept.com](http://www.art-dept.com)



# Art Department



Rebecca Plymate

[www.art-dept.com](http://www.art-dept.com)



# Art Department



Rebecca Plymate

[www.art-dept.com](http://www.art-dept.com)

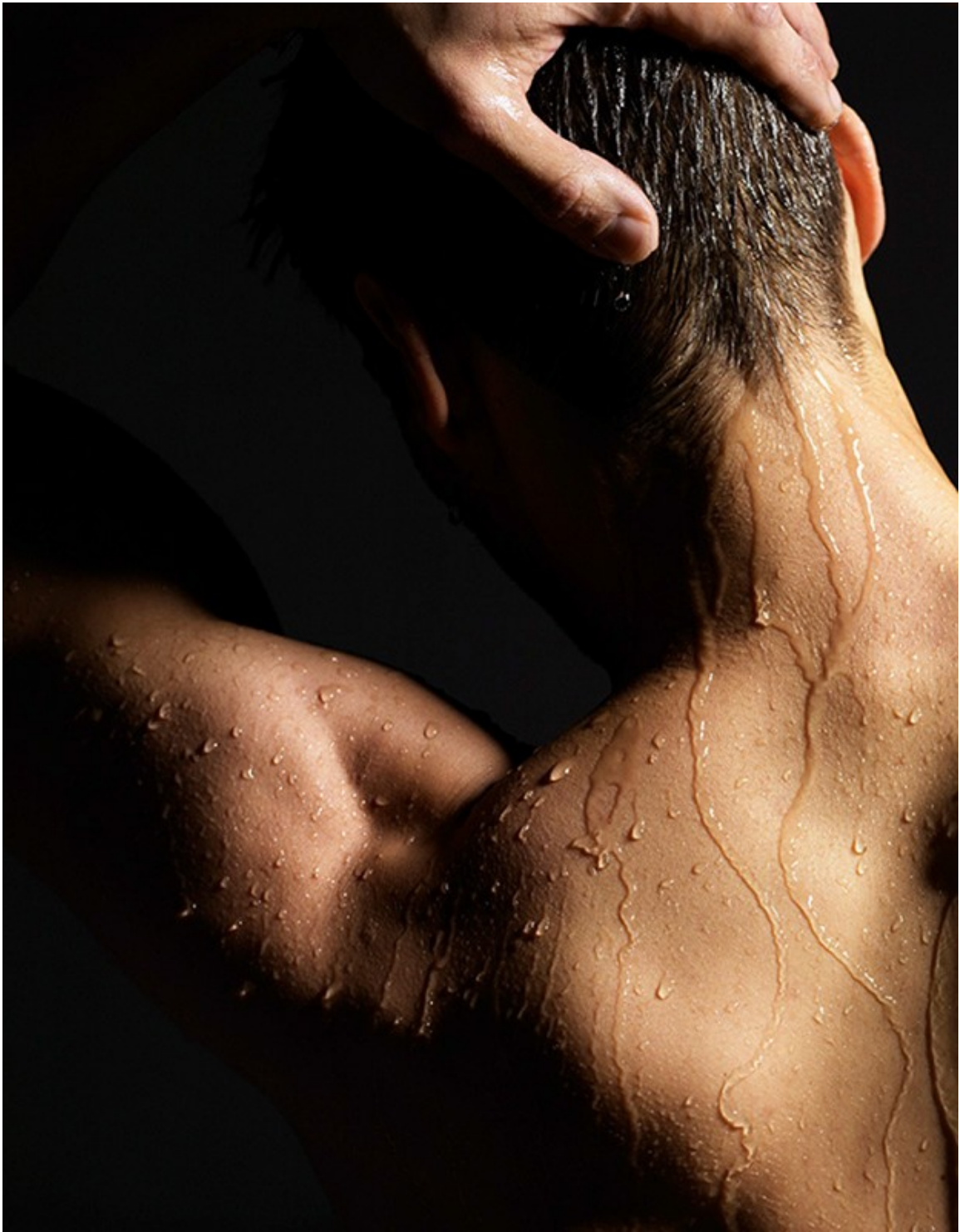
# Art Department



Rebecca Plymate

[www.art-dept.com](http://www.art-dept.com)

# Art Department



Rebecca Plymate

[www.art-dept.com](http://www.art-dept.com)



# Art Department



Rebecca Plymate

[www.art-dept.com](http://www.art-dept.com)

# Art Department



Rebecca Plymate

[www.art-dept.com](http://www.art-dept.com)



# Art Department



Rebecca Plymate

[www.art-dept.com](http://www.art-dept.com)



# Art Department



Rebecca Plymate

[www.art-dept.com](http://www.art-dept.com)

# Art Department



Rebecca Plymate

[www.art-dept.com](http://www.art-dept.com)

# Art Department



Rebecca Plymate

[www.art-dept.com](http://www.art-dept.com)



# Art Department



Rebecca Plymate

[www.art-dept.com](http://www.art-dept.com)

# Art Department

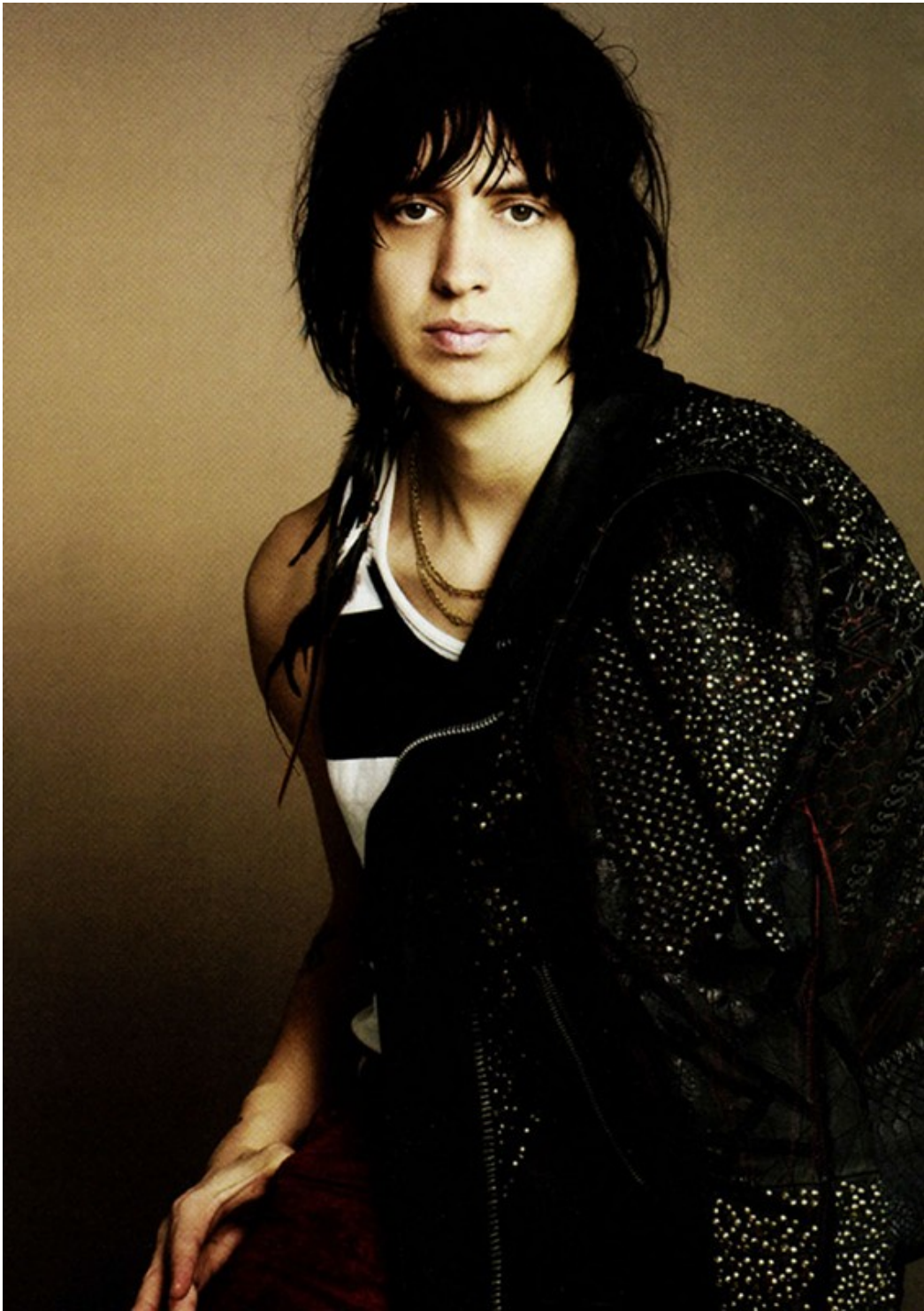


Rebecca Plymate

[www.art-dept.com](http://www.art-dept.com)



# Art Department



Rebecca Plymate

[www.art-dept.com](http://www.art-dept.com)



# Art Department



## BEST & BRIGHTEST STYLE

Black is standard and midnight blue is sharp, but a charcoal-gray tuxedo is pure confidence.  
Two-button wool-and-cashmere tuxedo (\$1,795) by Calvin Klein Collection; cotton evening shirt (\$300) by Salvatore Ferragamo; wool-and-cashmere bow tie (\$190) by Brunello Cucinelli; mother-of-pearl stud set (\$150) by Thomas Pink; silver-and-diamond cuff links (\$2,740) by Mahlia Collection.

Rebecca Plymate

[www.art-dept.com](http://www.art-dept.com)

# Art Department



BENJAMIN WALKER, 28  
ACTOR

There are no jazz hands in the musical *Bloody Bloody Andrew Jackson*. There are fistfights, and slashing guitar riffs, and a portrait of our seventh president as a poon-addled, fist-bumping alpha bro, but there are none of the jazz hands that can make musical theater so embarrassing for everyone involved. Plus, there's Benjamin Walker, the actor who's been singing and brawling as Jackson since the show's workshoping days in 2007. He passed on a plum role in the next *X-Men* movie to debut the character on Broadway this fall, and it's really just as well. He's now got eight chances a week to show just how much hell one actor can raise.

When it comes to the bow tie, you have options. It can be small and tight, as shown here... One-button wool tuxedo (\$3,210), cotton evening shirt (\$740), and silk bow tie (\$180) by Gucci; patent-leather shoes (\$695) by Giorgio Armani; sterling-silver-and-pietersite ring (\$650) by David Yurman.

Rebecca Plymate

[www.art-dept.com](http://www.art-dept.com)



# Art Department



BEST &  
BRIGHTEST  
STYLE



DEREK CIANFRANCE. 36  
WRITER, DIRECTOR

It took twelve years, sixty-something drafts, and 1,224 sketched-out storyboards for this writer-director to get his second film, *Blue Valentine*, off the ground and into the run-down art-house theater near you. As festivalgoers across the country have learned since it premiered at Sundance earlier this year, this quiet drama about a man (Ryan Gosling) and woman (Michelle Williams) who fall in love and fall apart is the most authentic depiction of a shitty marriage in recent memory. All Cianfrance's waiting, and his knack for capturing and conveying the sad details of life as it slowly comes undone, is finally paying off.

Throw a lightweight patterned scarf around your neck and then forget all about it. One-button wool-and-mohair tuxedo (\$2,045) by Burberry; cotton evening shirt (\$280) by Thom Browne; wool-and-silk scarf (\$195) and silk bow tie (\$60) by Thomas Pink; patent-leather shoes (\$695) by Giorgio Armani.

168 ESQ 12-10

## Rebecca Plymate

[www.art-dept.com](http://www.art-dept.com)



# Art Department



Rebecca Plymate

[www.art-dept.com](http://www.art-dept.com)

# Art Department



Rebecca Plymate

[www.art-dept.com](http://www.art-dept.com)



# Art Department



Rebecca Plymate

[www.art-dept.com](http://www.art-dept.com)



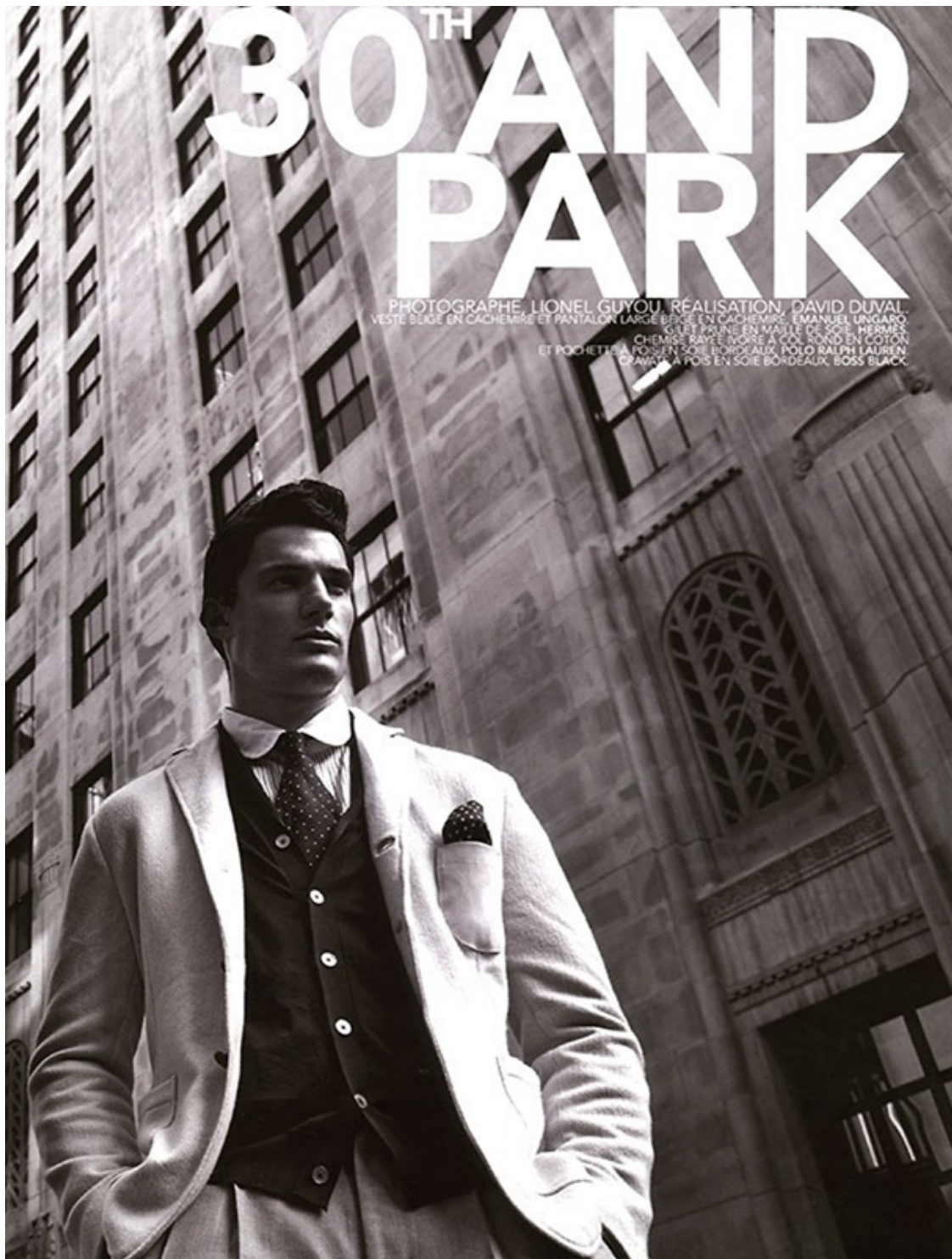
# Art Department



Rebecca Plymate

[www.art-dept.com](http://www.art-dept.com)

# Art Department



Rebecca Plymate

[www.art-dept.com](http://www.art-dept.com)



# Art Department



Rebecca Plymate

[www.art-dept.com](http://www.art-dept.com)



# Art Department



Rebecca Plymate

[www.art-dept.com](http://www.art-dept.com)



# Art Department



Rebecca Plymate

[www.art-dept.com](http://www.art-dept.com)



# Art Department

BE  
SMART  
ABOUT  
YOUR  
LAYERS

We humans are capable of tremendous things. Space travel. Subatomic physics. Twitter. But we still, still cannot predict the weather with certainty, and when heading out in the cold, you've gotta keep all your options open. You've gotta layer. With milder temperatures, you can go simple—a cotton T-shirt underneath a cashmere sweater underneath a vest—but when the stakes are positively (or negatively) subzero, you want to start with silk or cotton as your base (the better to wick moisture away from the body) before adding three or four wool pieces. Finish off with a down-filled parka and you're ready for whatever may, or may not, come your way.

Cashmere Vest (\$4,215), cashmere-turtleneck sweater (\$1,465), and cotton cargo pants (\$199) by SHUHEISSO COLOMBINI; 310-466-6000. Steve Berman River 1000M watch (\$1,250) by ALPINE; alpine-watches.com.

170

A man with dark hair and a light beard is standing in a rustic setting, leaning against a wooden wall. He is wearing a dark brown quilted vest over a grey turtleneck sweater and patterned long-sleeved shirt. He is also wearing grey cargo pants and a black watch on his left wrist. To his left is a large stack of cut logs. The background is a light-colored wooden wall.

Rebecca Plymate

[www.art-dept.com](http://www.art-dept.com)



# Art Department



**SHEARLING:  
NO ARGUMENT**

It's hard to argue with the inimitable softness and reliable warmth you can find only in the hide of a one-year-old sheep. That age isn't arbitrary. As sheep get older, their wool tends to get coarser and their skin tends to get banged up, meaning the best and softest wool of a sheep's life (and the most pristine hides) comes in the first year. The result is outerwear that can skew formal (knee length, double-breasted) or casual (streamlined, zip-up) and last you for many long winters to come.

Shearling coat (price upon request) and cashmere turtleneck (\$990) by TOM FORD; 212-559-0500. Three-button wool jacket (\$2,020), cotton shirt (\$540), and wool trousers (\$650) by SALVATORE FERRAGAMO; 800-628-8916. Leather shoes (\$725) and suede-and-cashmere gloves (\$375) by RENZO ANGILERI ROMA; regm.com. Silver Type II Transatlantic watch (\$9,100) by BRUNO MAGLI; bmagli.com.

168

Rebecca Plymate

[www.art-dept.com](http://www.art-dept.com)

# Art Department



MODE

— DOMINIC COOPER —

★

## IN SCENA

DOPO IL SUCCESSO CON *MAMMA MIA*, *CAPITAN AMERICA* E *MARILYN*, LA GIOVANE PROMESSA DEL TEATRO INGLESE DIVENTA PROTAGONISTA: AL CINEMA, NE *LA LEGGENDA DEL CACCIATORE DI VAMPIRI*; IN QUESTE PAGINE, CON LE ANTICIPAZIONI DELLA MODA D'AUTUNNO NELLE TONALITÀ DEL GRIGIO

— FOTO JASON HETHERINGTON —

Total look **Prada**  
(cappotto 1800 euro,  
giilet 550 euro,  
camicia e pantaloni  
350 e 570 euro)

104 | 69 AGOSTO 2012

Rebecca Plymate

[www.art-dept.com](http://www.art-dept.com)



# Art Department



Rebecca Plymate

[www.art-dept.com](http://www.art-dept.com)



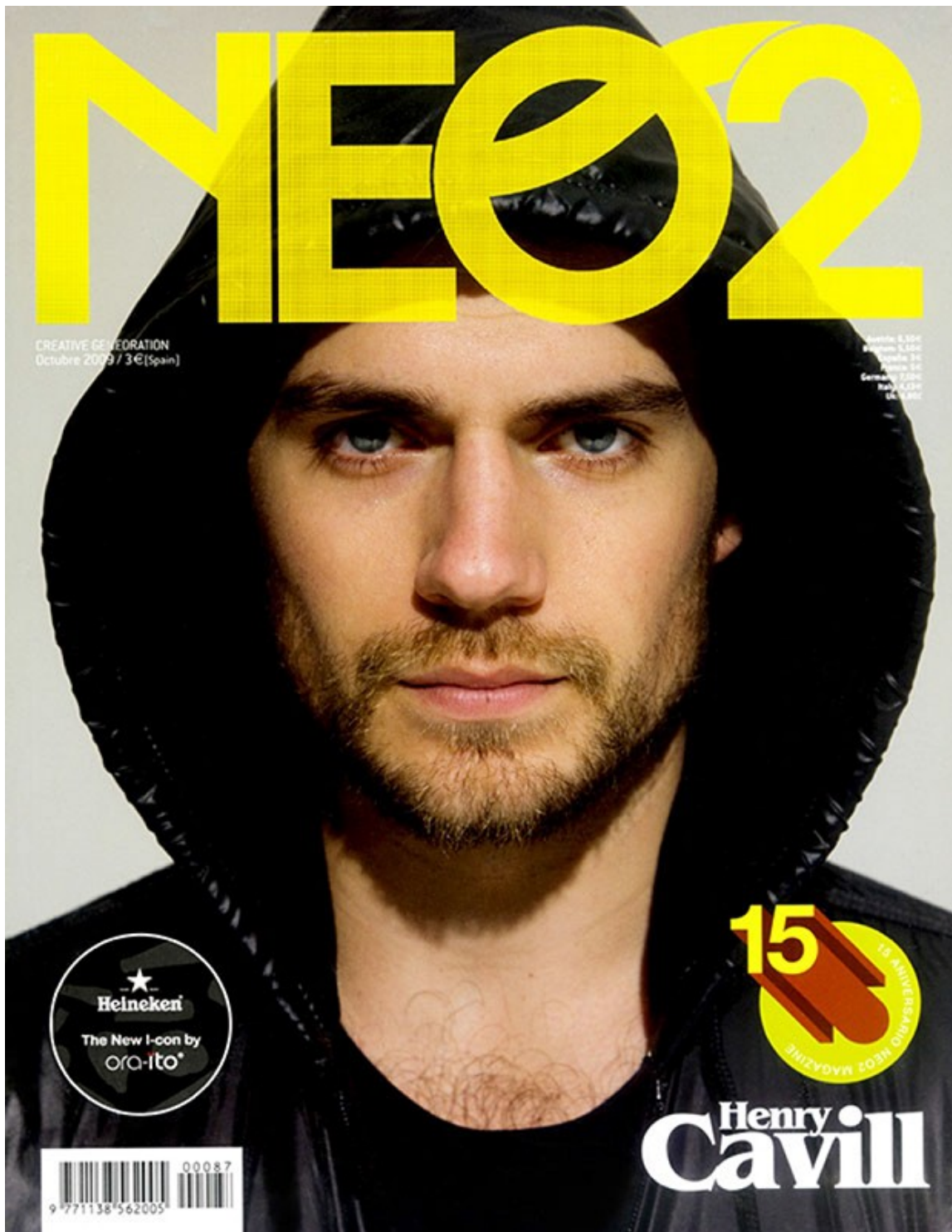
# Art Department



Rebecca Plymate

[www.art-dept.com](http://www.art-dept.com)

# Art Department



Rebecca Plymate

[www.art-dept.com](http://www.art-dept.com)



# Art Department



Rebecca Plymate

[www.art-dept.com](http://www.art-dept.com)

# Art Department



Rebecca Plymate

[www.art-dept.com](http://www.art-dept.com)



# Art Department



Rebecca Plymate

[www.art-dept.com](http://www.art-dept.com)

# Art Department



Rebecca Plymate

[www.art-dept.com](http://www.art-dept.com)



# Art Department



## TOM

10:15pm

Slim fit wool blend twill trousers, \$675, and wool blend and satin twill tuxedo jacket, \$2,045, both by Alexander McQueen at [mporter.com](http://mporter.com). Slim fit cotton shirt, \$295, by Burberry Prorsum at Burberry, Lenox Square. Black silk necktie, \$150, and white linen pocket round with black edge, \$60, both by Alexander Ochi at [olch.com](http://olch.com). Slimline automatic watch, \$1,850, by Frederique Constant at Bloomingdale's, Lenox Square.

## Rebecca Plymate

[www.art-dept.com](http://www.art-dept.com)

# Art Department



## DANIEL

JAM

Cotton tuxedo shirt, \$595, wool coat, \$3,195, and bowtie, \$135, all at Ermenegildo Zegna, Lenox Square. Studded leather gloves, \$650, by Burberry Prorsum at Burberry, Lenox Square. Buttonhole flower pin, \$195, by Lanvin at mrporter.com.

## Rebecca Plymate

[www.art-dept.com](http://www.art-dept.com)



# Art Department



Rebecca Plymate

[www.art-dept.com](http://www.art-dept.com)

# Art Department



Rebecca Plymate

[www.art-dept.com](http://www.art-dept.com)



# Art Department



Rebecca Plymate

[www.art-dept.com](http://www.art-dept.com)



# Art Department

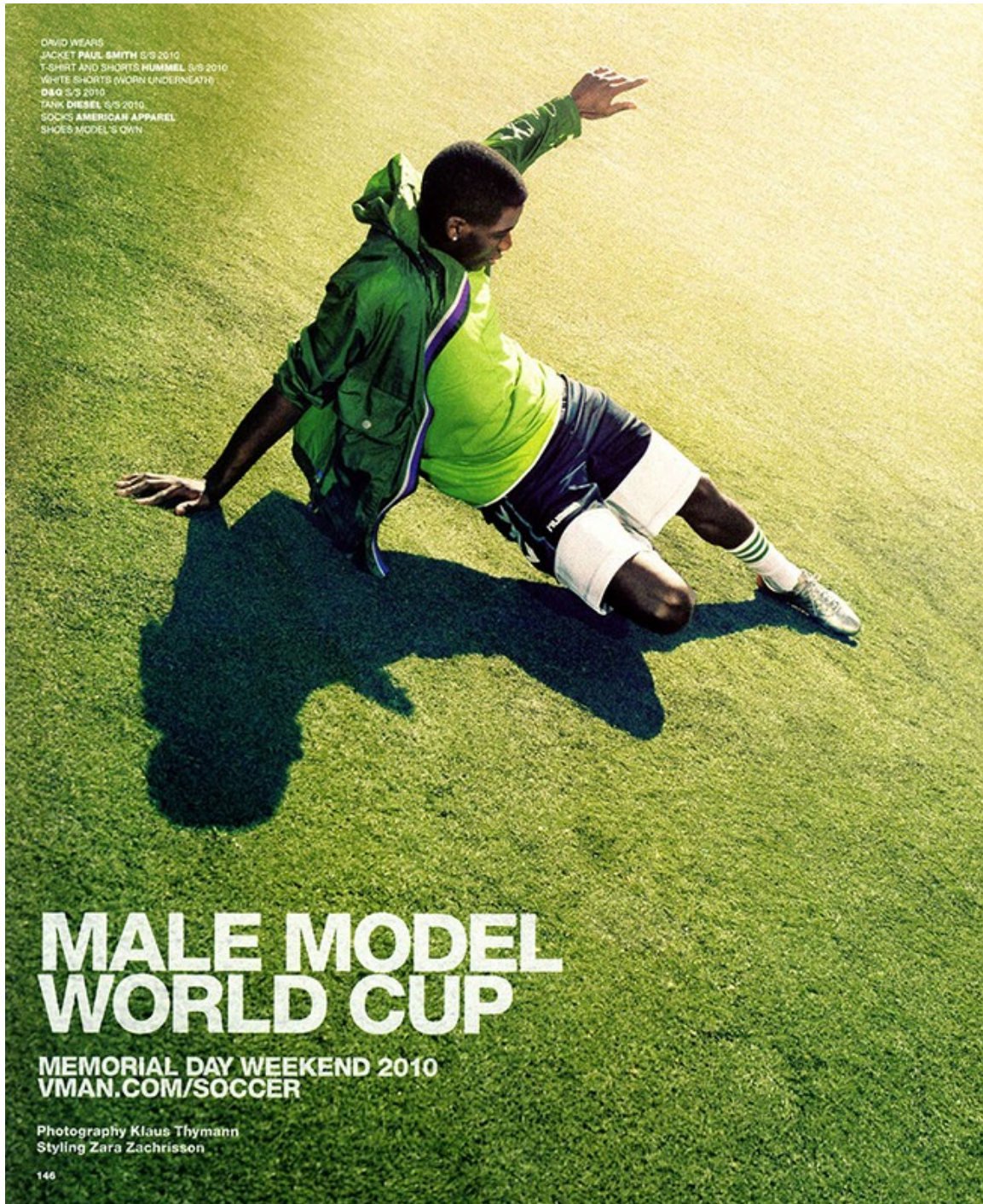


Rebecca Plymate

[www.art-dept.com](http://www.art-dept.com)



# Art Department



DAVID WEARS  
JACKET PAUL SMITH S/S 2010  
T-SHIRT AND SHORTS HUMMEL S/S 2010  
WHITE SHORTS (WORN UNDERNEATH)  
D&G S/S 2010  
TANK DIESEL S/S 2010  
SOCKS AMERICAN APPAREL  
SHOES MODEL'S OWN

**MALE MODEL  
WORLD CUP**

MEMORIAL DAY WEEKEND 2010  
[VMAN.COM/SOCCER](http://VMAN.COM/SOCCER)

Photography Klaus Thymann  
Styling Zara Zachrisson

146

Rebecca Plymate

[www.art-dept.com](http://www.art-dept.com)



# Art Department



Rebecca Plymate

[www.art-dept.com](http://www.art-dept.com)



# Art Department



## **ASSEMBLY NEW YORK**

Year-old downtown retailer Assembly New York wowed with its house-designed new collection. Opening Ceremony watch out!

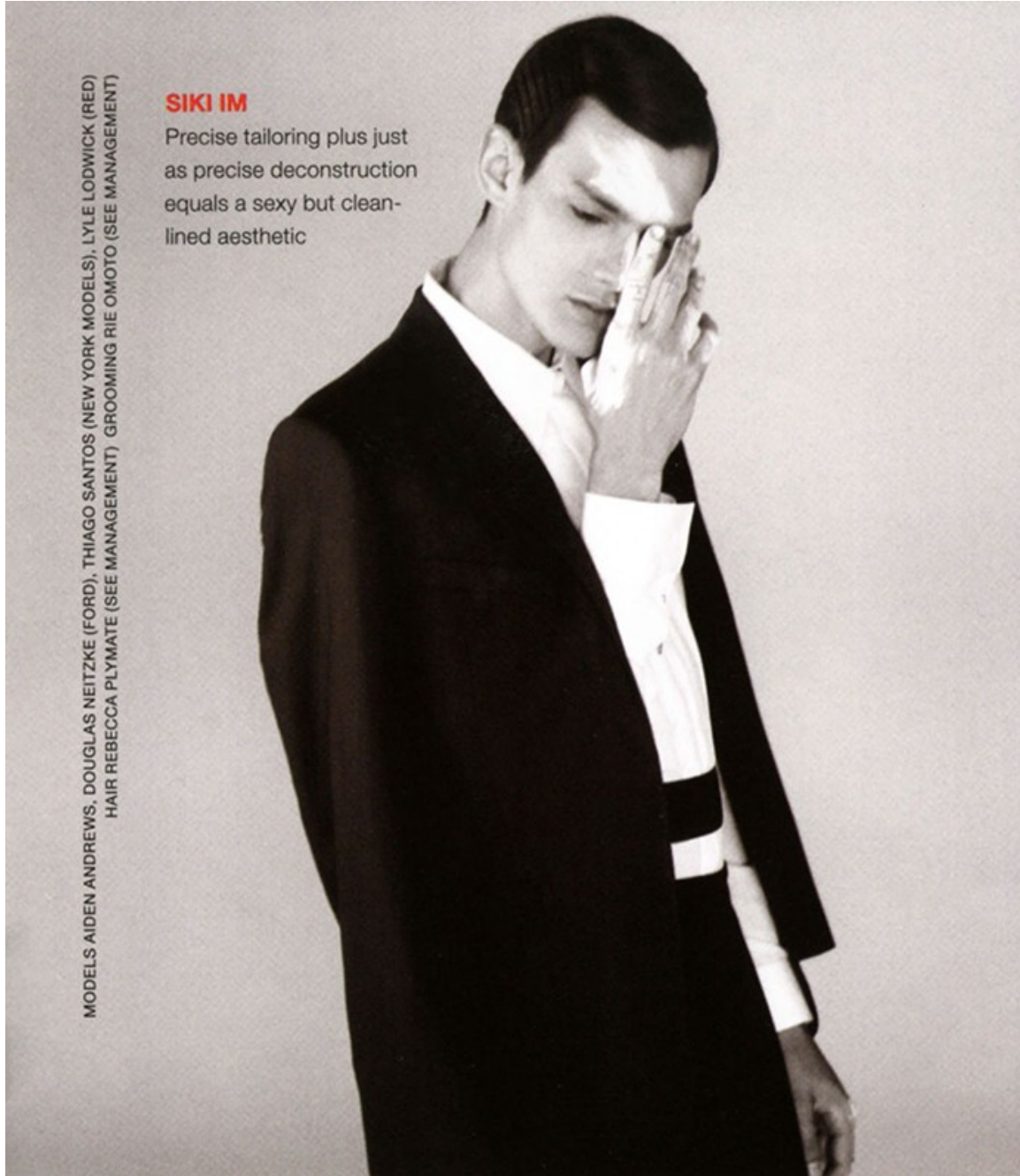
NECKLACE  
**GILES & BROTHER**  
**BY PHILIP CRANGI**  
SHOES VINTAGE

**THIS PAGE**  
**PHOTOGRAPHY**  
**CAMERON KRONE**  
**STYLING YUKI JAMES**  
**TEXT JACOB BROWN**

## Rebecca Plymate

[www.art-dept.com](http://www.art-dept.com)

# Art Department



MODELS AIDEN ANDREWS, DOUGLAS NEITZKE (FORD), THIAGO SANTOS (NEW YORK MODELS), LYLE LODWICK (RED)  
HAIR REBECCA PLYMATE (SEE MANAGEMENT) GROOMING RIE OMOTO (SEE MANAGEMENT)

## SIKI IM

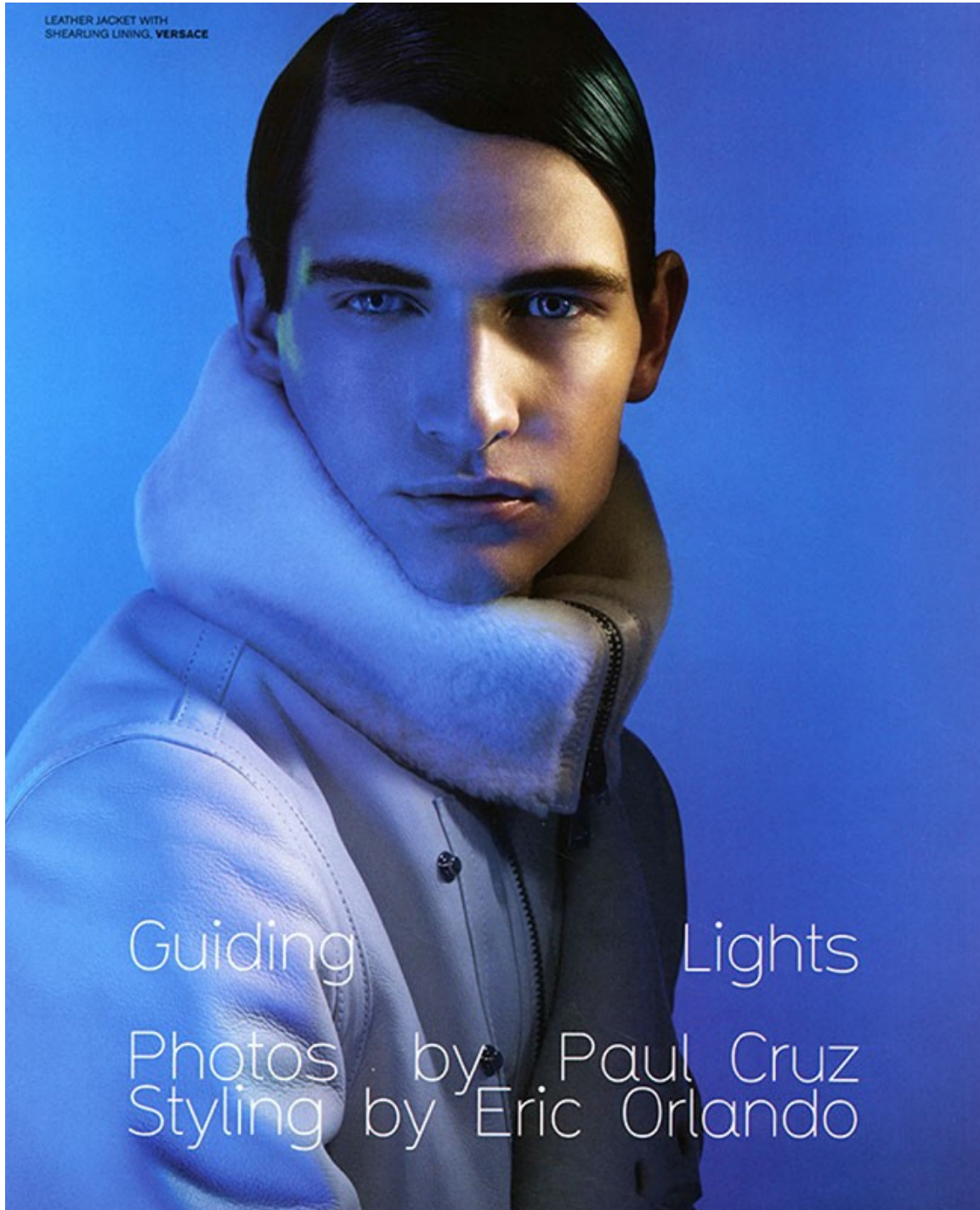
Precise tailoring plus just  
as precise deconstruction  
equals a sexy but clean-  
lined aesthetic

## Rebecca Plymate

[www.art-dept.com](http://www.art-dept.com)



# Art Department



Rebecca Plymate

[www.art-dept.com](http://www.art-dept.com)

# Art Department



Rebecca Plymate

[www.art-dept.com](http://www.art-dept.com)



# Art Department



Rebecca Plymate

[www.art-dept.com](http://www.art-dept.com)

# Art Department



On Lundqvist:  
Two-button wool suit  
(\$2,750) by Prada; cot-  
ton shirt (\$330) by Sal-  
vatore Ferragamo;  
cashmere tie (\$325) by  
Brunello Cucinelli.  
On Richards: One-but-  
ton cotton suit (\$1,295)  
and cotton shirt (\$295)  
by Calvin Klein Collec-  
tion; silk tie (\$125) by  
John Varvatos.

## Rebecca Plymate

[www.art-dept.com](http://www.art-dept.com)



# Art Department

30

**HENRIK  
LUNDQVIST**  
30, GOALTENDER

**HIGH POINT OF  
LAST SEASON:**

Logged his sixth career playoff shutout in game three of the Eastern Conference finals.

**ON THE EVOLUTION  
OF NHL STYLE:**

"I still remember the comments my first year in the NHL in 2005. People, especially the older guys, thought my suits were too tight or skinny. They weren't into fashion as much as the young guys today are."

**ON THE BEAUTY OF  
HIS JERSEY:**

"Coming from Europe, they advertise on the jerseys and it ruins the whole look. The uniforms here are so clean, and they look so much better."

Two-button wool suit (\$1,695), cotton shirt (\$325), and silk tie (\$155) by Ralph Lauren Black Label; cotton pocket square (\$10) by Paul Stuart.



Rebecca Plymate

[www.art-dept.com](http://www.art-dept.com)

# Art Department

19

**BRAD  
RICHARDS**  
32, CENTER

**HIGH POINT OF  
LAST SEASON:**

Power-play goal, with only 6.6 seconds left in game five of the Eastern Conference semis. (Game went into overtime. Rangers won.)

**ON HIS (OTHER)  
UNIFORM:**

"We have to wear suits to every game, and when you live in New York and you're so exposed to fashion, it's fun to play around with the different styles."

**ON THE LIMITS  
OF A LUCKY SUIT:**

"If you win a big game, you'll remember the suit you wore that day and you'll wear it again—it's a superstition thing. This past playoffs, I had a Calvin Klein suit that I wore when we won a couple game sevens, and I'd put it back in the closet after the game and save it till our next game seven. Unfortunately, it doesn't always work."

Two-button wool suit (\$795) by Joseph Abboud Collection; cotton shirt (\$295) by Calvin Klein Collection; wool knit tie (\$95) by Jack Spade; leather shoes (\$1,050) by Tom Ford; linen pocket square (\$50) by Thomas Pink; leather belt (\$145) by Martin Dingman.



161

Rebecca Plymate

[www.art-dept.com](http://www.art-dept.com)



# Art Department

## ALTUZARRA

"A lot of it came from sport," explains Joseph Altuzarra, holding a bonded leather top inspired by hockey uniforms from his spring collection. "It started with the idea of how to take the functionality of fall into spring." The 27-year-old, Paris-born designer (photographed here with, from left, Claire Courtin-Clarins, Lauren Santo Domingo, and cousin Lily Kwong) understands the tastes of the modern metropolitan woman whose 24-hour-racecourse lifestyle demands a wardrobe that keeps pace. His signature: "A mix of something very sexy and something very utilitarian as well."



All women's clothing by Altuzarra. Hair: Teddy Choulet for Otto Sabor; makeup: Yoni Meir for Chanel Beauty. Grooming: Rebecca Plymate for L'Oréal Paris. Details: see in this issue.

## Rebecca Plymate

[www.art-dept.com](http://www.art-dept.com)

# Art Department



## A.A. ANTONIO AZZUOLO

"The basic premise is building a man's wardrobe," explains Montreal-bred menswear designer Antonio Azzuolo. Azzuolo, 41 (photographed with actor Ben Barnes), was at a sewing machine by age six (his mother was a seamstress; his father, a tailor's apprentice) and went on to Hermès, Kenzo, and, most recently, Ralph Lauren as menswear design director before launching his own line, in 2008, of carefully crafted pieces that cater to the downtown dandy. The result is a harmonious union of Upper and Lower East Side style—classic tailoring fused with off-kilter touches like slightly cropped jackets and rounded shirt collars. "There's a good balance in my collections between my highly tailored pieces and this kind of more forward, edgy, casual aspect," he says. "So there's a poetic side and a creative side."

All clothes by A.A. Antonio Azzuolo. Hair: Diego Di Sila for Wells Professionals; grooming: Rebecca Plymate for L'Oréal Paris. Details, see in This Issue.

VIDEO: KEEP UP WITH THE CFDA/VOGUE FASHION FUND COMPETITION  
WITH OUR EXCLUSIVE VIDEO SERIES, "THE FUND," ON VOGUE.COM.

## Rebecca Plymate

[www.art-dept.com](http://www.art-dept.com)



# Art Department

## CARLOS CAMPOS

Carlos Campos navigates deftly around his recently opened microboutique on the Lower East Side, pulling out pima-cotton polo shirts in hand-dyed deep-sea blues. "We play a lot with color because we like basics," says the 38-year-old menswear designer (L'Ort, photographed here with musician Theophilus London), who hails from Honduras and hopes to open ten stores—mostly in South America—within the next five years. "The ideal customer is a guy like me, who really appreciates the details; I cannot design something if I'm not thinking about how it's going to be constructed." Campos creates all of his patterns and colors himself, which determines both his bottom line and his schedule: "I think that's the reason why I'm still in business; I save a lot of money making everything myself! I have this little calendar that says, 'Today I have to do two patterns, three patterns.' When it's something fun, I do it on Saturday or Sunday!" In this story: Production design by Nick Des Jardins at Mary Howard Studio.



All clothing by Carlos Campos. Hair, Teddy Chaves for Otto Salas; grooming, Rebecca Plymate for L'Ort. Grooming, see in this issue.

## Rebecca Plymate

[www.art-dept.com](http://www.art-dept.com)

# Art Department

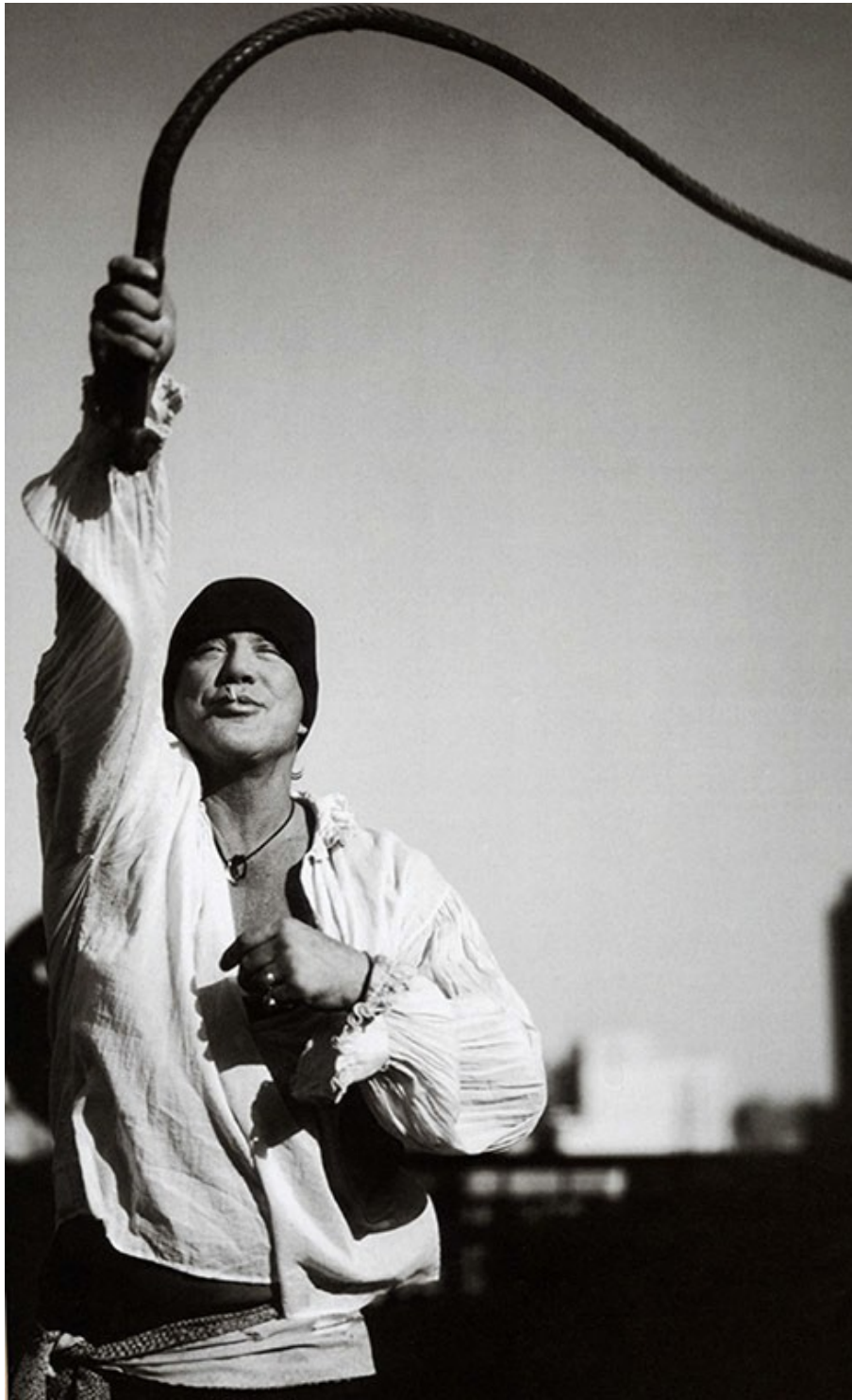


Rebecca Plymate

[www.art-dept.com](http://www.art-dept.com)



# Art Department



Rebecca Plymate

[www.art-dept.com](http://www.art-dept.com)

# Art Department

**IT'S ALL RELATIVE**

Even as a kid, John "had his own mind. He knew where he was going," says his father.

**80**  
RICHARD  
BORN OCT. 11, 1927

**30**  
JOHN  
BORN OCT. 16, 1977

## JOHN MAYER & HIS DAD

As they celebrate their birthdays, the Mayer men talk about milestones, music and raising a star

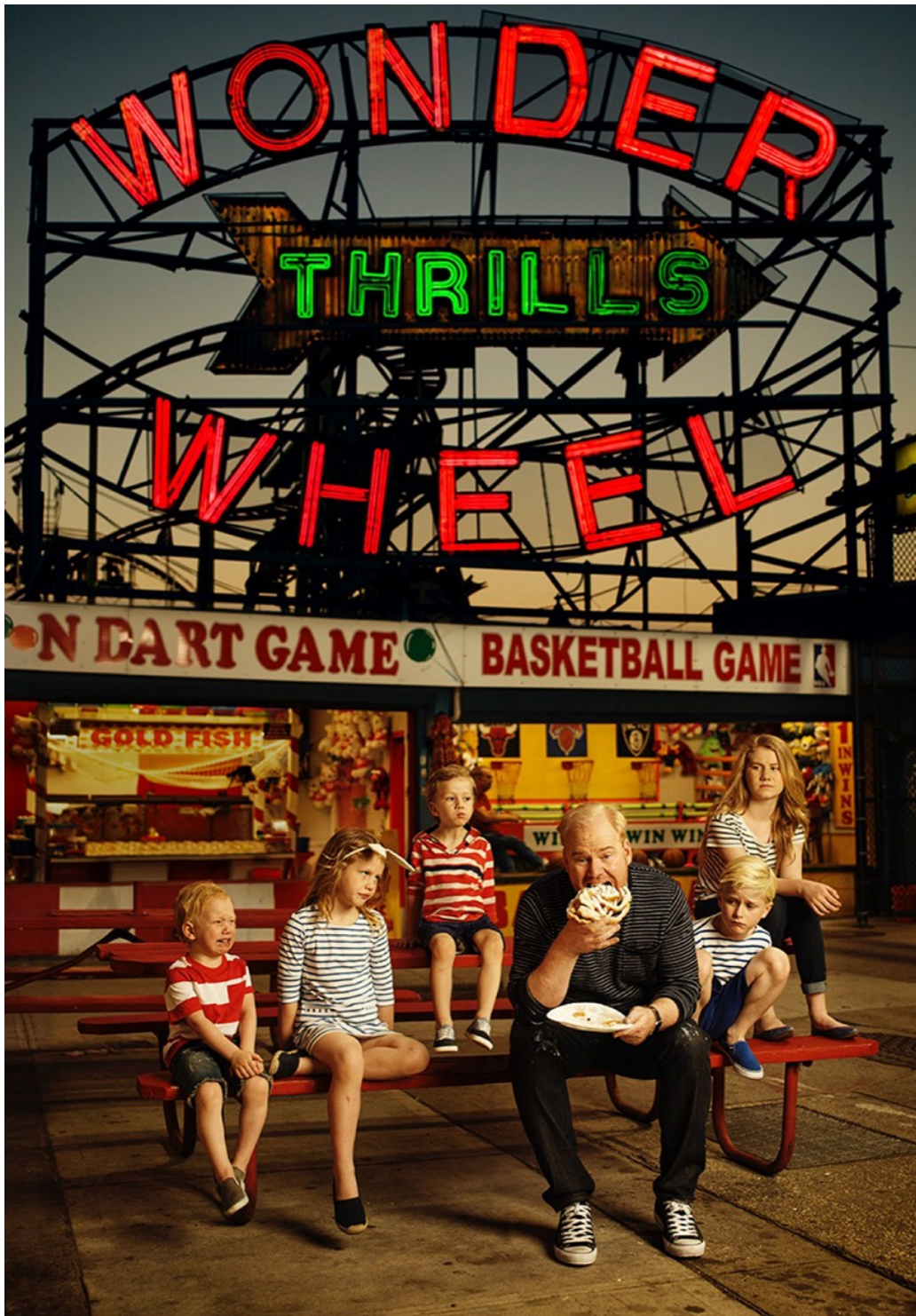
**O**n Oct. 16, musician John Mayer treated his father, Richard, a retired high school principal and sometime pianist, to the joint birthday bash of a lifetime (see box). Just before the party started, the pair sat down with PEOPLE's Mark Dagostino for a father-son chat.

**SO HOW DOES IT FEEL TO SHARE TWO BIG BIRTHDAYS?**  
**RICHARD:** I used to think 80 was old. Now I *know* it is. [They both laugh.]

Rebecca Plymate



# Art Department



Rebecca Plymate

[www.art-dept.com](http://www.art-dept.com)