

# Art Department



Rebecca Plymate

[www.art-dept.com](http://www.art-dept.com)

# Art Department



Rebecca Plymate

[www.art-dept.com](http://www.art-dept.com)

# Art Department



Rebecca Plymate

[www.art-dept.com](http://www.art-dept.com)

# Art Department



Rebecca Plymate

[www.art-dept.com](http://www.art-dept.com)

# Art Department



Rebecca Plymate


[www.art-dept.com](http://www.art-dept.com)

# Art Department



Thank you Chiyo Ishikawa for teaching us for nearly 3 decades that all you need in life is the right attitude and a red lip. Happy Holidays.

*Love,*  
NORDSTROM




Thank you Grace Goodson for being our model, muse, and customer, all rolled into one stylish individual. Happy Holidays.

*Love,*  
NORDSTROM

Rebecca Plymate

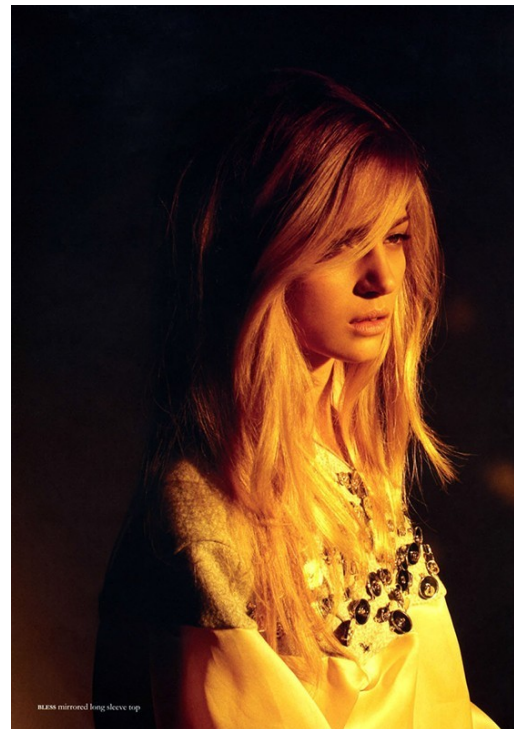
[www.art-dept.com](http://www.art-dept.com)

# Art Department



Thank you Ivy Vance for making your mom's 1977 Nordstrom shoe style even cooler the second time around. Happy Holidays.

Love,  
**NORDSTROM**



Rebecca Plymate

[www.art-dept.com](http://www.art-dept.com)

# Art Department



Rebecca Plymate

[www.art-dept.com](http://www.art-dept.com)



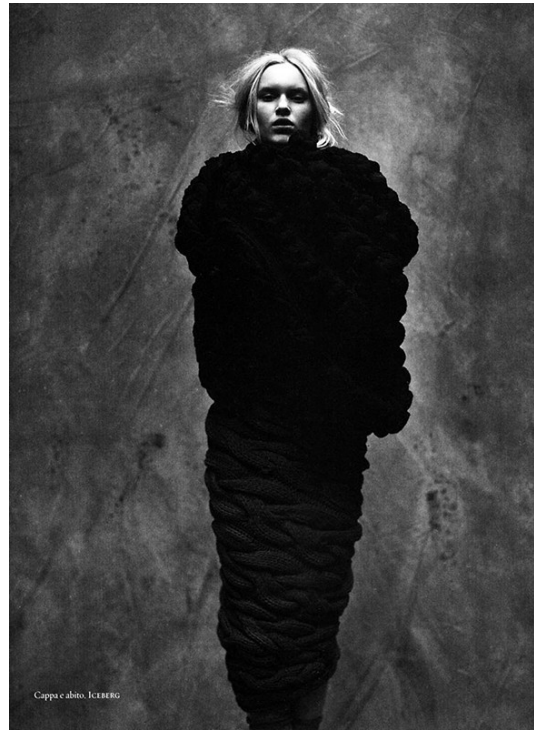
# Art Department



Rebecca Plymate

[www.art-dept.com](http://www.art-dept.com)

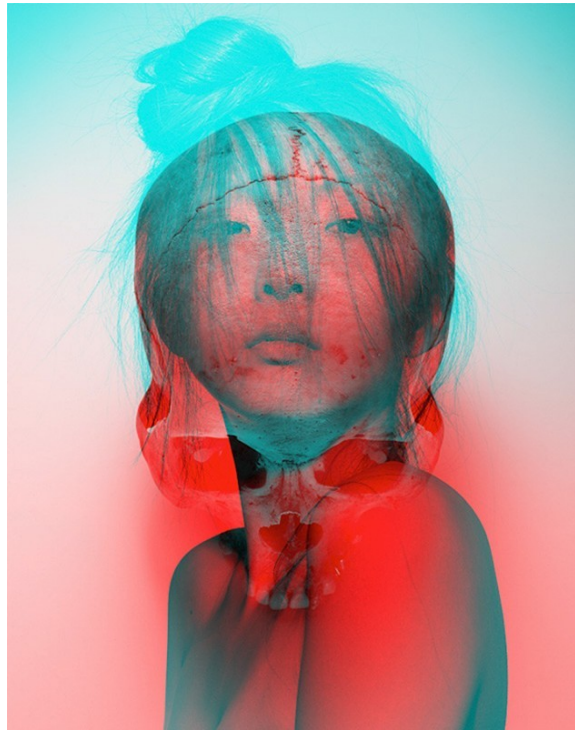
# Art Department



Rebecca Plymate

[www.art-dept.com](http://www.art-dept.com)

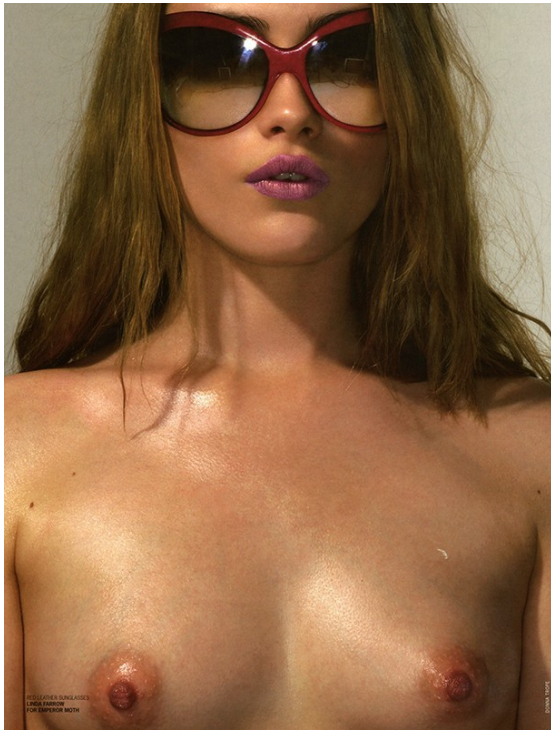
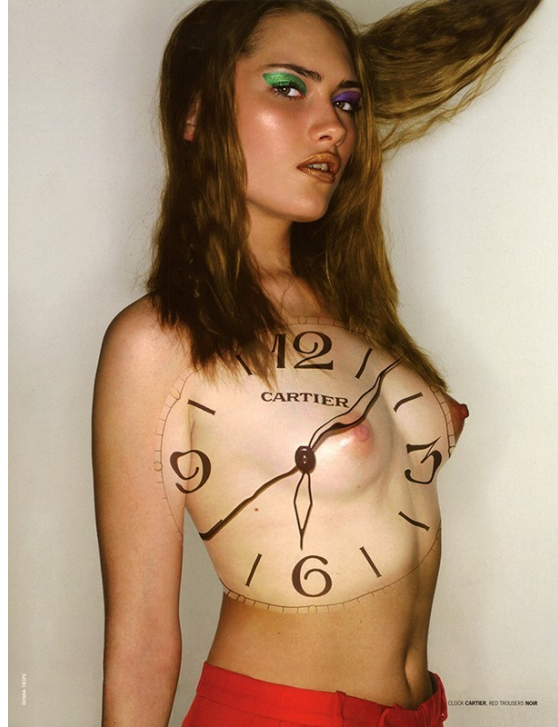
# Art Department



Rebecca Plymate

[www.art-dept.com](http://www.art-dept.com)

# Art Department



Rebecca Plymate

[www.art-dept.com](http://www.art-dept.com)

# Art Department



Rebecca Plymate

[www.art-dept.com](http://www.art-dept.com)

# Art Department



Rebecca Plymate

[www.art-dept.com](http://www.art-dept.com)

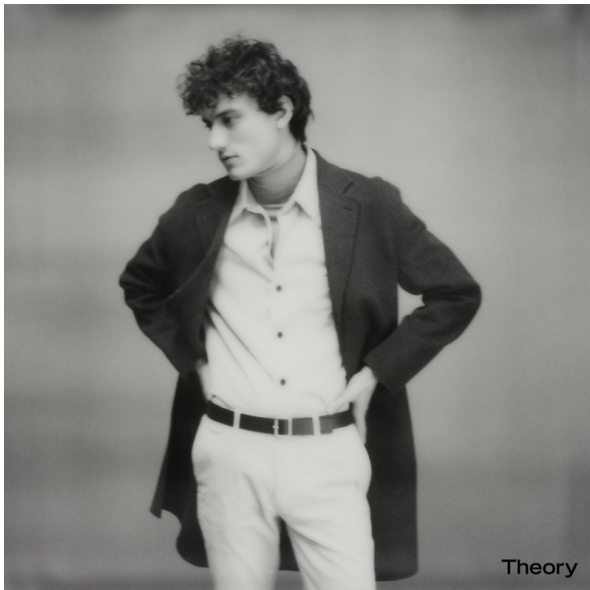
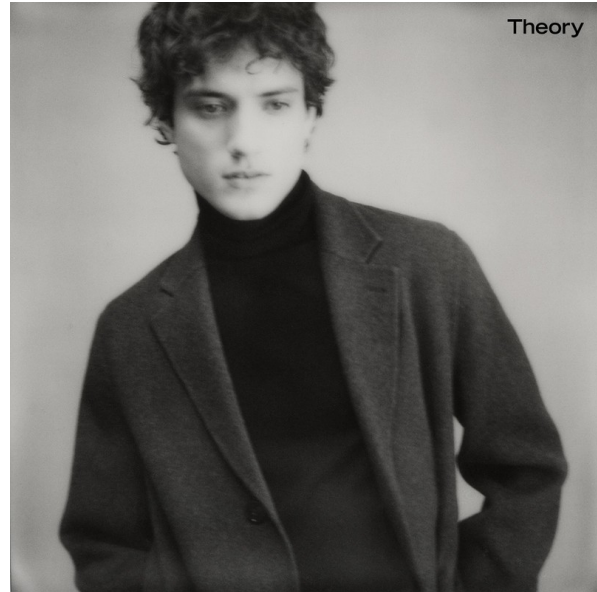
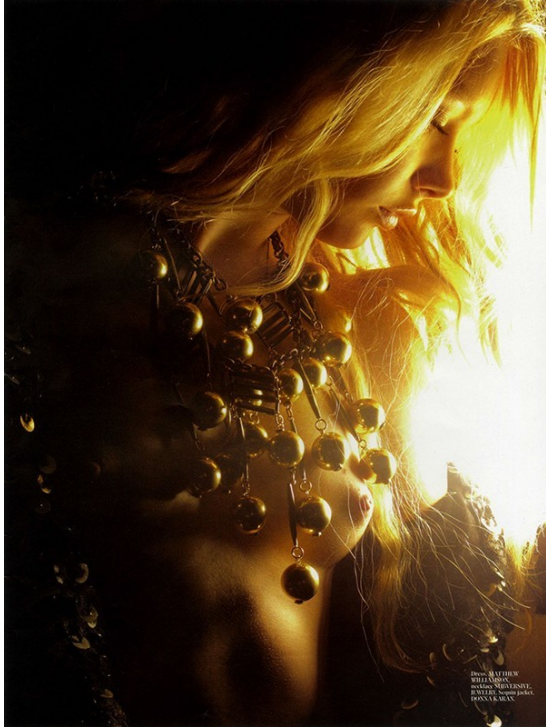
# Art Department



Rebecca Plymate

[www.art-dept.com](http://www.art-dept.com)

# Art Department



Rebecca Plymate

[www.art-dept.com](http://www.art-dept.com)



# Art Department



Rebecca Plymate

[www.art-dept.com](http://www.art-dept.com)

# Art Department



Rebecca Plymate

[www.art-dept.com](http://www.art-dept.com)

# Art Department



Rebecca Plymate

[www.art-dept.com](http://www.art-dept.com)

# Art Department

## PENN BADGLEY

GOSSIP GIRL STAR DISCUSSES SOGWRITING,  
SOCCER, AND WHAT COMES NEXT  
INTERVIEW by BEC COUCHE  
PHOTOGRAPHY by KURT ISWARIENKO



Tank Top by ROBERT GELLER  
Ring & Cuff by MARK JACOBSON  
Tie-dye Leg Slinky Panties by BLUEBERRY  
Leather Wraps by HORNHEIM by DUCKER-BELVIN  
Shoeg by TOMMY WILKINSON

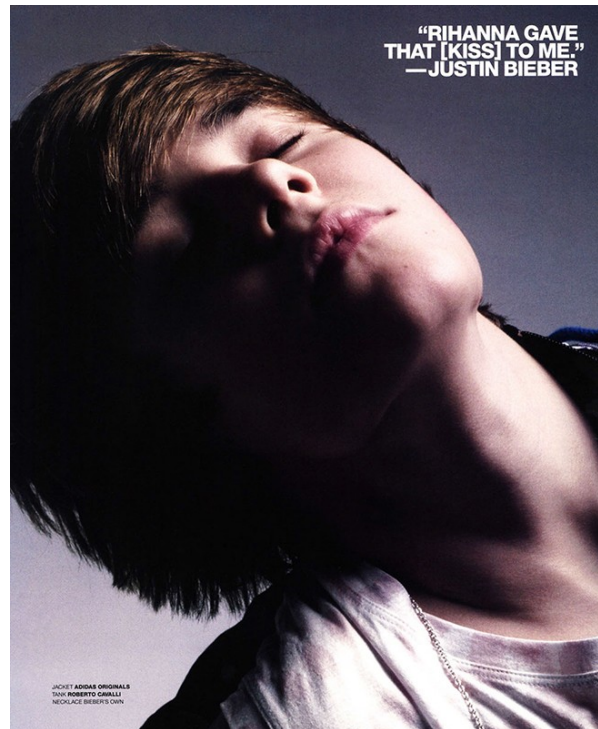
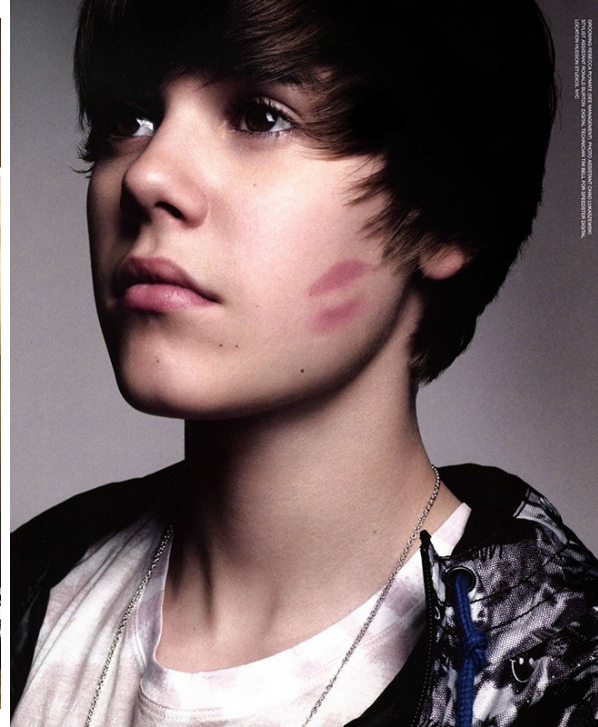


Double Breasted Heirloom Suit by BILLY REID  
T-shirt by ROBERT GELLER SECONDS  
Pocket Scarf by TWEEN

## Rebecca Plymate

[www.art-dept.com](http://www.art-dept.com)

# Art Department



Rebecca Plymate

www.art-dept.com

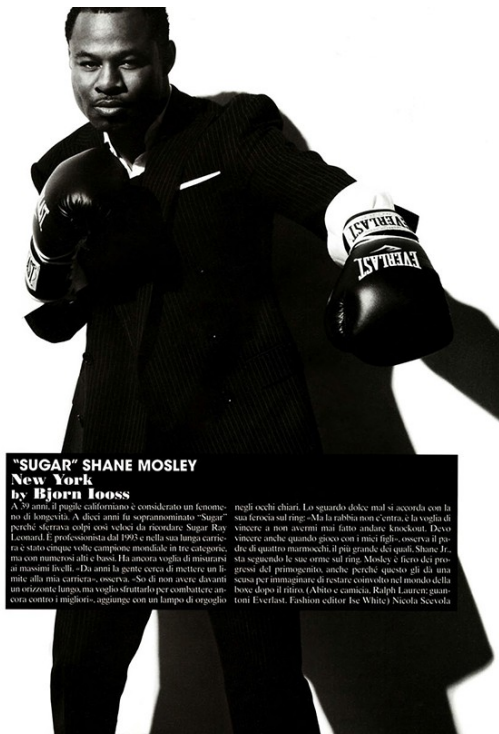
# Art Department



Rebecca Plymate

[www.art-dept.com](http://www.art-dept.com)

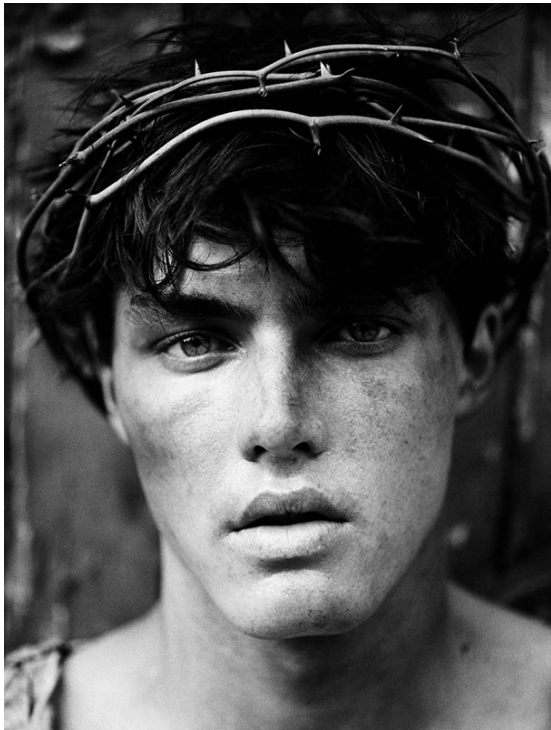
# Art Department



Rebecca Plymate

[www.art-dept.com](http://www.art-dept.com)

# Art Department

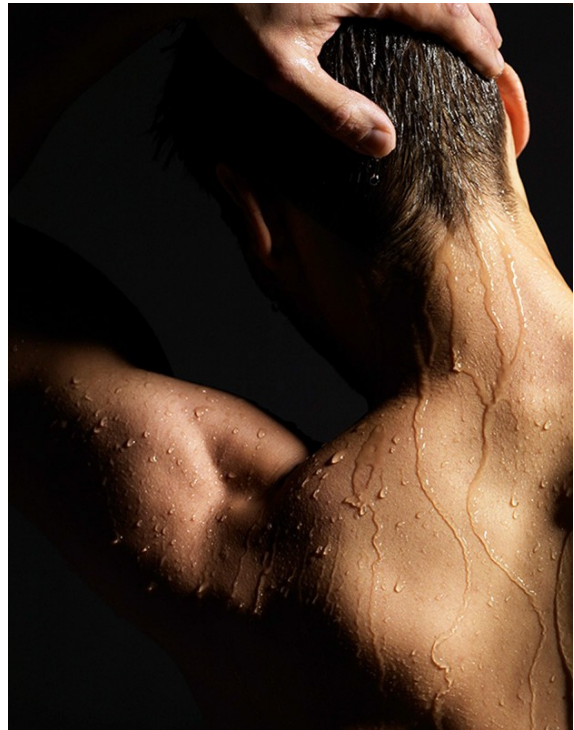
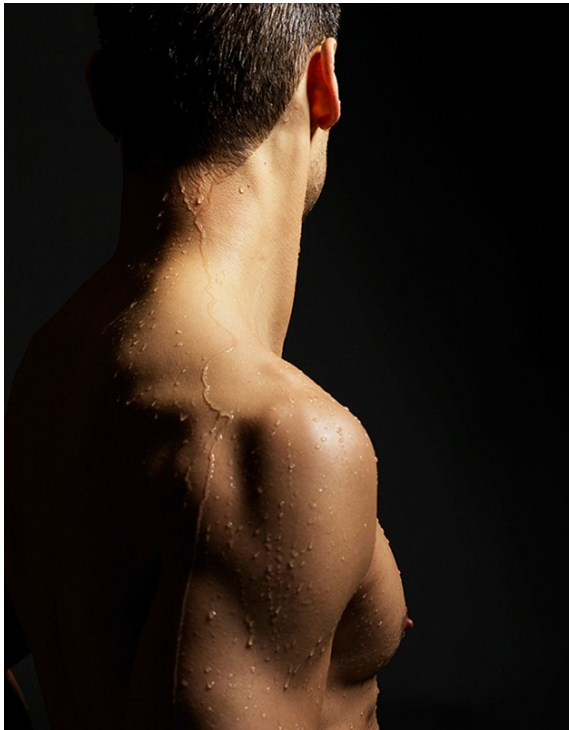


Rebecca Plymate

[www.art-dept.com](http://www.art-dept.com)



# Art Department



Rebecca Plymate

[www.art-dept.com](http://www.art-dept.com)

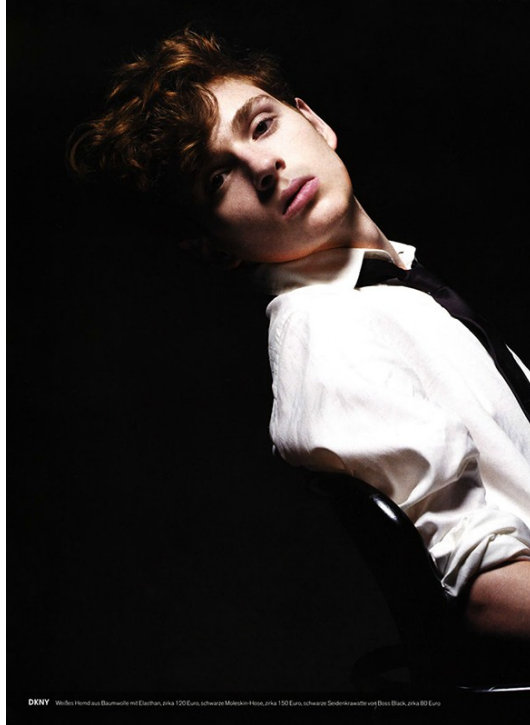
# Art Department



Rebecca Plymate

[www.art-dept.com](http://www.art-dept.com)

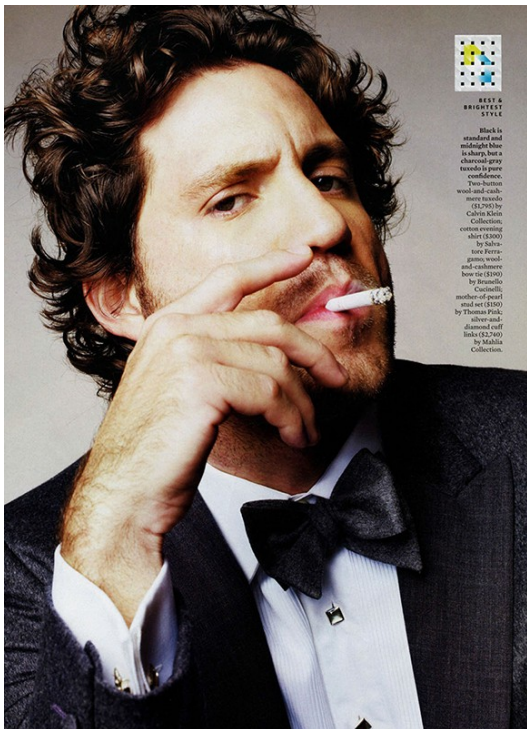
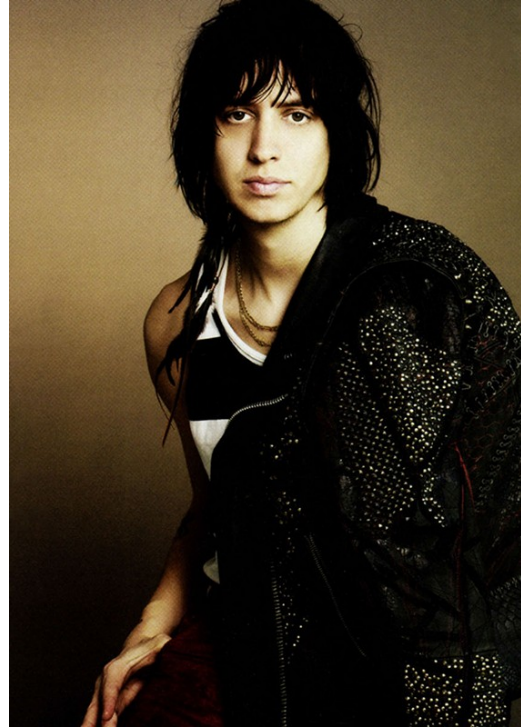
# Art Department



## Rebecca Plymate

[www.art-dept.com](http://www.art-dept.com)

# Art Department



Rebecca Plymate

www.art-dept.com

# Art Department

BEST &  
BRIGHTEST  
STYLE

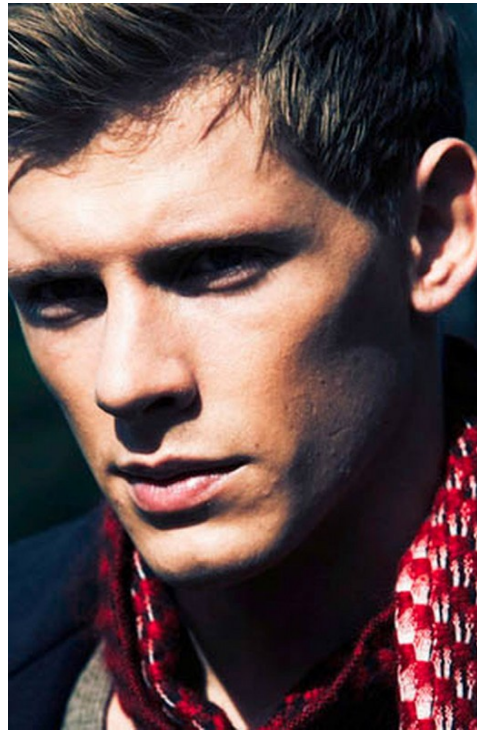


DEREK CIANFRANCE, 34  
WRITER, DIRECTOR

It took two years, sixty something drafts, and 124 sketch-out storyboards for this writer-director to get his second film, *Blue Valentine*, off the ground and into the sun-down art-house theater near you. As festivalgoers across the country have learned since it premiered at Sundance earlier this year, this quiet drama about a man (Ryan Reynolds) and woman (Michelle Williams) who fall in love and fall apart is the most authentic depiction of a shaky marriage in recent memory. At Cianfrance's waiting, and his knack for capturing and conveying the sad details of life as it slowly comes undone, is finally paying off.

Three: a lightweight patterned scarf aimed near neck and then forget all about it. One: button wool and mohair sweater (\$2,245) by Burberry; vest over top (\$200) by Thom Browne; neck and tie, scarf (\$195) and silk bow tie (\$60) by Thomas Pink; patent leather shoes (\$895) by Guccio Armani.

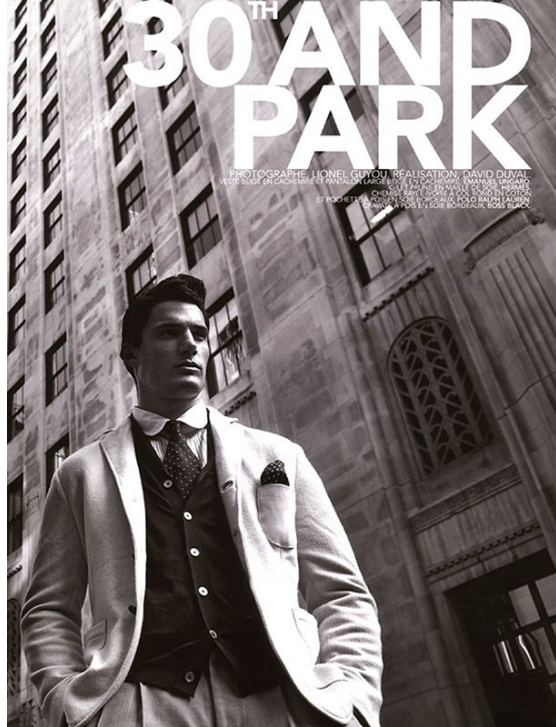
168 ESQ 12+10



## Rebecca Plymate

[www.art-dept.com](http://www.art-dept.com)

# Art Department



Rebecca Plymate

[www.art-dept.com](http://www.art-dept.com)

# Art Department



## DOWN, DOWN, DOWN

The contributions of the humble goose to the sustained warming of mankind cannot be overstated. We owe the goose, huge, as each cluster of its down contains dozens of filaments that trap warm air and keep body heat in and cold out. It is not enough to stuff a shell with feathers, since everything would simply settle along the jacket's bottom. Instead, we have large horizontal channels of stitching across the jacket (or, less common, the square pockets created by vertical and horizontal stitching) that organize the down and keep it in place.

QUIRE'S BIG BLACK BOOK FALL 2014 167



## BE SMART ABOUT YOUR LAYERS

We humans are capable of tremendous things. Space travel. Subatomic physics. Twitter. But we still, still cannot predict the weather with certainty, and when heading out in the cold, you've gotta keep all your options open. You've gotta layer. With milder temperatures, you can go simple—a cotton T-shirt underneath a cashmere sweater underneath a vest—but when the stakes are positively (or negatively) higher, you want to start with silk or cotton as your base (the better to wick moisture away from the body) before adding three or four wool pieces. Finish off with a down-filled parka and you're ready for whatever may, or may not, come your way.

REBECCA PLYMATE  
SHEARLING: NO ARGUMENT  
170



## SHEARLING: NO ARGUMENT

It's hard to argue with the inimitable softness and reliable warmth you can find only in the hide of a one-year-old sheep. That age isn't arbitrary. As sheep get older, their wool tends to get coarser and their skin tends to get barked up, meaning the best and softest wool of a sheep's life (and the most pristine hide) comes in the first year. The result is outerwear that can skew formal (knee-length, double-breasted) or casual (streamlined, zip-up) and last you for many long winters to come.

REBECCA PLYMATE  
SHEARLING: NO ARGUMENT  
168

168

Rebecca Plymate

www.art-dept.com

# Art Department

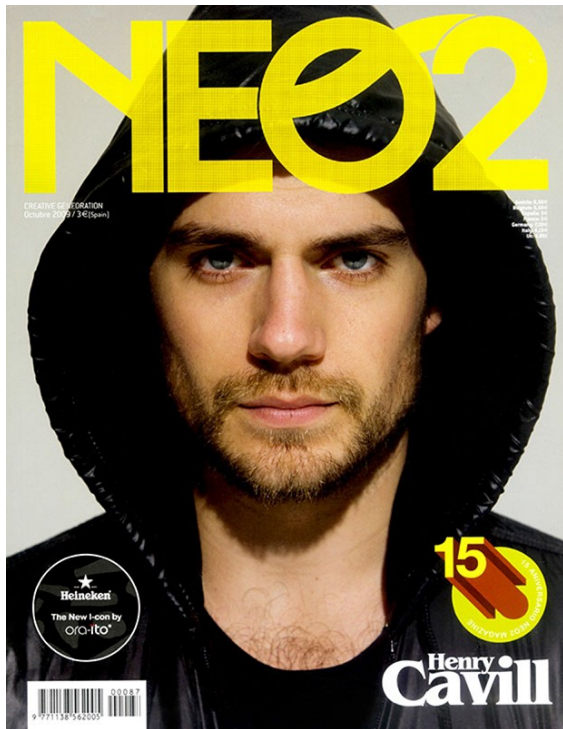


Rebecca Plymate

[www.art-dept.com](http://www.art-dept.com)



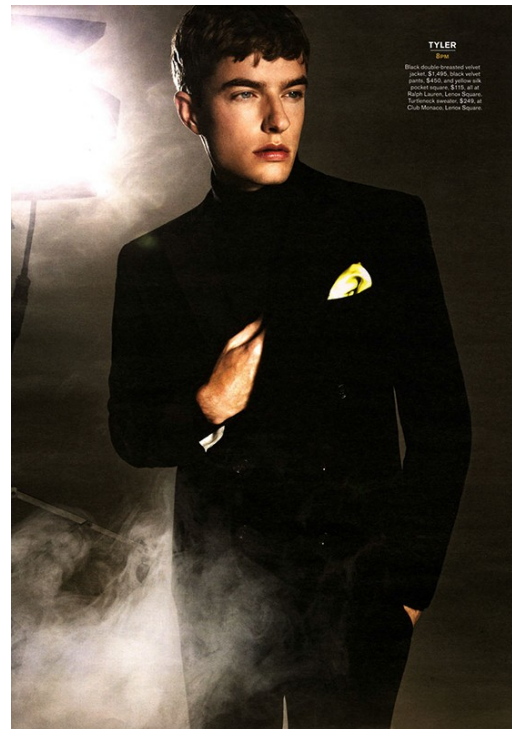
# Art Department



Rebecca Plymate

[www.art-dept.com](http://www.art-dept.com)

# Art Department



Rebecca Plymate

[www.art-dept.com](http://www.art-dept.com)



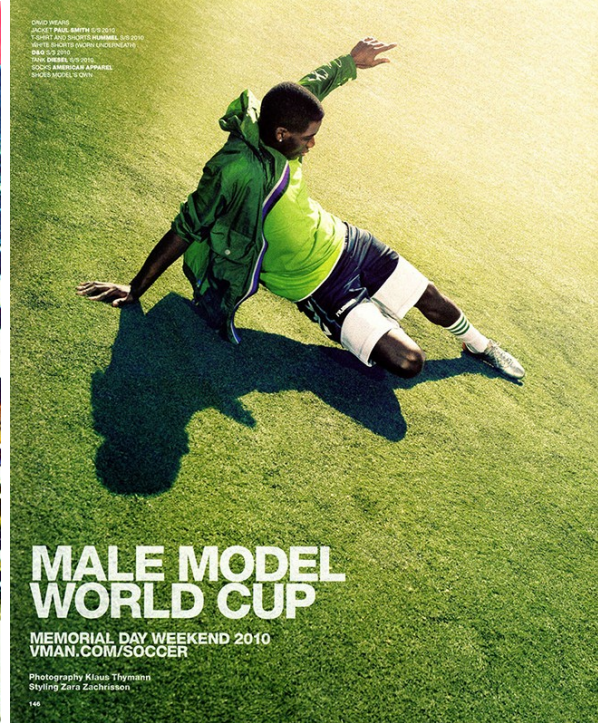
# Art Department



Rebecca Plymate

[www.art-dept.com](http://www.art-dept.com)

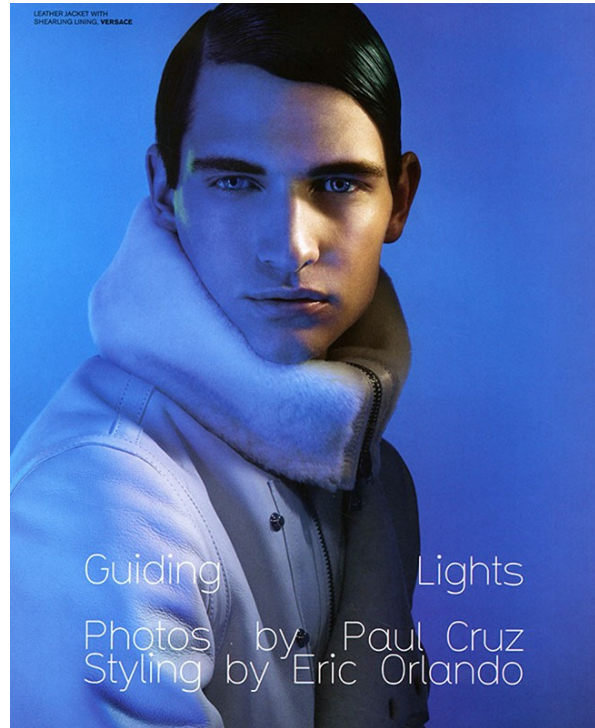
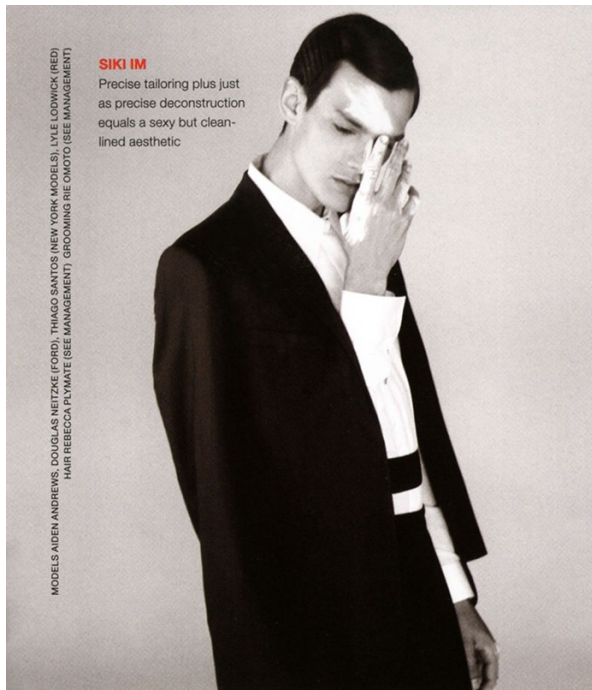
# Art Department



## Rebecca Plymate

[www.art-dept.com](http://www.art-dept.com)

# Art Department



Rebecca Plymate

[www.art-dept.com](http://www.art-dept.com)

# Art Department



Rebecca Plymate

www.art-dept.com

# Art Department

## ALTUZARRA

"A lot of it came from sport," explains Joseph Altuzarra, holding a bonded-leather top inspired by hockey uniforms from his spring collection. "It started with the idea of how to take the functionality of fall into spring." The 27-year-old, Paris-born designer (photographed here with model Lili, Claire Courtin-Clarins, Lauren Santa Domingo, and cousin Lily) founds understands the tastes of the modern metropolitan woman whose 24-hour raccoon lifestyle demands a wardrobe that keeps pace. His signature: "A mix of something very sexy and something very utilitarian as well."



## A.A. ANTONIO AZZUOLO

"The basic premise is building a man's wardrobe," explains Montreal-bred menswear designer Antonio Azzuolo, 41 (photographed with actor Ben Barnes), who was at a sewing machine by age six (his mother was a seamstress, his father, a tailor's apprentice) and went on to Hermes, Kenzo, and, most recently, Ralph Lauren as menswear design director before launching his own line, in 2008, of carefully crafted pieces that cater to the downtown dandy. The result is a harmonious union of Upper and Lower East Side style—classic tailoring fused with off-kilter touches like slightly cropped jackets and rounded shirt collars. "There's a good balance in my collections between my highly tailored pieces and this kind of more forward, edgy, casual aspect," he says. "So there's a poetic side and a creative side."

VIDEO: KEEP UP WITH THE CFAA/VOGUE FASHION FUND COMPETITION WITH OUR EXCLUSIVE VIDEO SERIES, "THE FUND," ON VOGUE.COM

## CARLOS CAMPOS

Carlos Campos navigates deftly around his recently opened microboutique on the Lower East Side, pulling out pima cotton polo shirts as hand-dyed design possibilities. "We play a lot with color because we like basics," says the 38-year-old menswear designer (Lili, photographed here with musician Trenché and London, who hails from Honduras and hopes to open ten stores—mostly in South America—within the next few years). "The ideal customer is a guy like me, who really appreciates the details. I cannot design something if I'm not thinking about how it's going to be constructed." Campos creates all of his patterns and colors himself, which determines both his bottom line and his schedule. "I think that's the reason why I'm still in business. I save a lot of money making everything myself. I have this little calendar that says, 'Today I have to do five patterns, three patterns.' When it's something fun, I do it on Saturday or Sunday." In this story: Production design by Nick Deo; jacket at Mary Howard Studio.



## Anderson Cooper

AKIRA MIYAZAKI / GETTY IMAGES

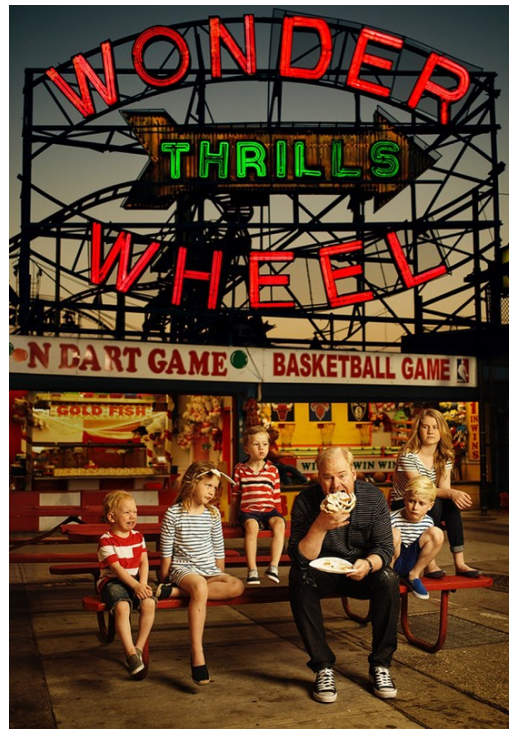
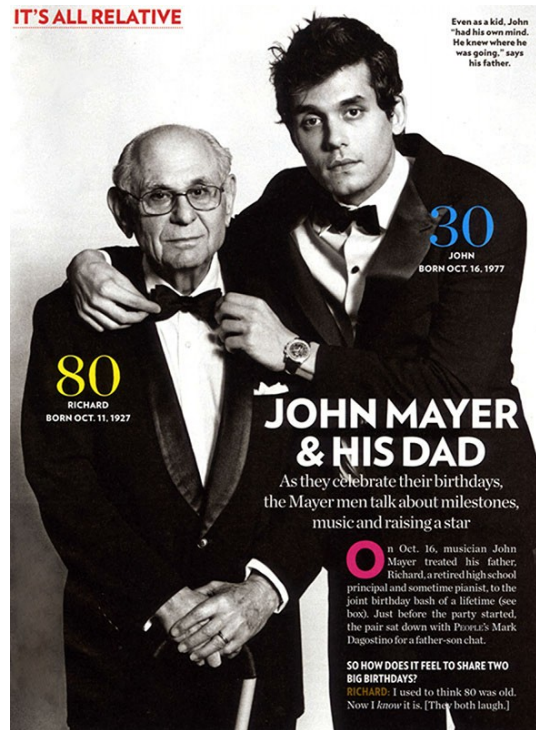
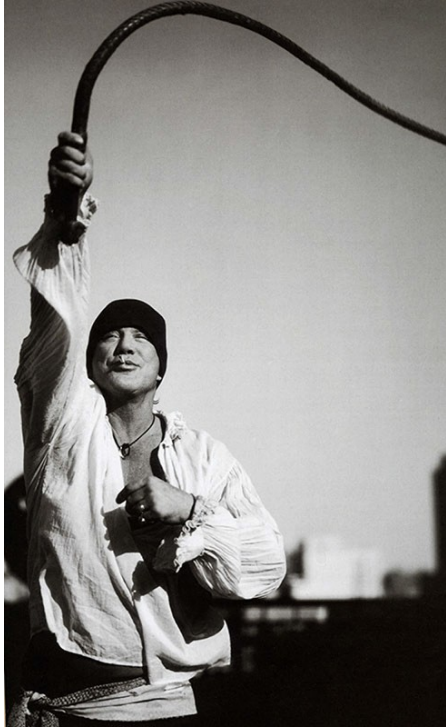


# Rebecca Plymate

www.art-dept.com



# Art Department



Rebecca Plymate