

Art Department



Sandrine Van Slee

www.art-dept.com

Art Department



Vanity Copertina

LA COSTRUZIONE DI UN UOMO

I modelli che ammira e la mascolinità tossica, il porno, l'amore, la paternità: **ALESSANDRO BORGHI** si mette a nudo come non mai. In una serie e in questa intervista *super*

di SILVIA BOMBINO foto FRANCESCO CARROZZINI servizio MICHAEL PHILOUZE

21 FEBBRAIO 2024

IN CORSA
Alessandro Borghi, 37 anni, è il protagonista di *Strazziera*, dove è il portavoce Rocco Silfregli. La serie è presentata in anteprima mondiale alla 74^a edizione del Festival del Cinema di Berlino e uscirà su Netflix il 6 marzo. Composta da 7 episodi, è stata creata e scritta da Francesca Mameri, ed è diretta da Matteo Rovere, Francesco Carrozzini e Francesca Mazzoleni.

Giacca, camicia e cravatta, **Givenchy**.

34 VANITY FAIR 35

Sandrine Van Slee

www.art-dept.com

Art Department



Sandrine Van Slee

www.art-dept.com

Art Department



Sandrine Van Slee

www.art-dept.com

Art Department



Sandrine Van Slee

www.art-dept.com

Art Department



Sandrine Van Slee

www.art-dept.com

Art Department



Sandrine Van Slee

www.art-dept.com

Art Department



Sandrine Van Slee

www.art-dept.com

Art Department



Sandrine Van Slee

www.art-dept.com

Art Department



Sandrine Van Slee

www.art-dept.com

Art Department



Sandrine Van Slee

www.art-dept.com

Art Department



Sandrine Van Slee

www.art-dept.com

Art Department



Sandrine Van Slee

www.art-dept.com

Art Department



Sandrine Van Slee

www.art-dept.com

Art Department



Sandrine Van Slee

www.art-dept.com

Art Department



Sandrine Van Slee

www.art-dept.com

Art Department



Sandrine Van Slee

www.art-dept.com

Art Department



Sandrine Van Slee

www.art-dept.com

Art Department



Sandrine Van Slee

www.art-dept.com

Art Department



Sandrine Van Slee

www.art-dept.com

Art Department



Sandrine Van Slee

www.art-dept.com

Art Department



Sandrine Van Slee

www.art-dept.com

Art Department



Sandrine Van Slee

www.art-dept.com

Art Department



Sandrine Van Slee

www.art-dept.com

Art Department



The image shows the cover of Esquire magazine. The central figure is J Balvin, a male reggaeton artist, wearing a white suit jacket with a red and black pattern of snakes and other motifs. He has short, styled hair with a green-to-blue gradient and is looking off to the side. The magazine title 'Esquire' is written in a large, white, stylized font at the top. Below it, the hashtag '#MANatHISBEST' is visible on the left, and the issue date 'ABRIL 2017' and website 'www.esquirelat.com' are on the right. The main headline on the left reads 'DESDE NEW YORK FASHION WEEK J BALVIN EL REY DEL STREETSTYLE'. Below that, it says 'TENEMOS EVIDENCIA DE OTROS PLANETAS: LEO MESSI + ROBERT DE NIRO Y PAUL SMITH'. In the bottom right corner, there is a barcode and the price 'MEX. \$69.00'.

Esquire

#MANatHISBEST

ABRIL 2017
www.esquirelat.com

**DESDE
NEW YORK
FASHION
WEEK
J BALVIN**

**EL REY DEL
STREETSTYLE**

TENEMOS
EVIDENCIA DE
OTROS PLANETAS:
**LEO
MESSI**
+
ROBERT DE NIRO
Y PAUL SMITH

MEX. \$69.00

0 01101 7 450327 019343

246477

¡SOLICITA AHORA! MANTÉNTE AL DÍA

Sandrine Van Slee

www.art-dept.com

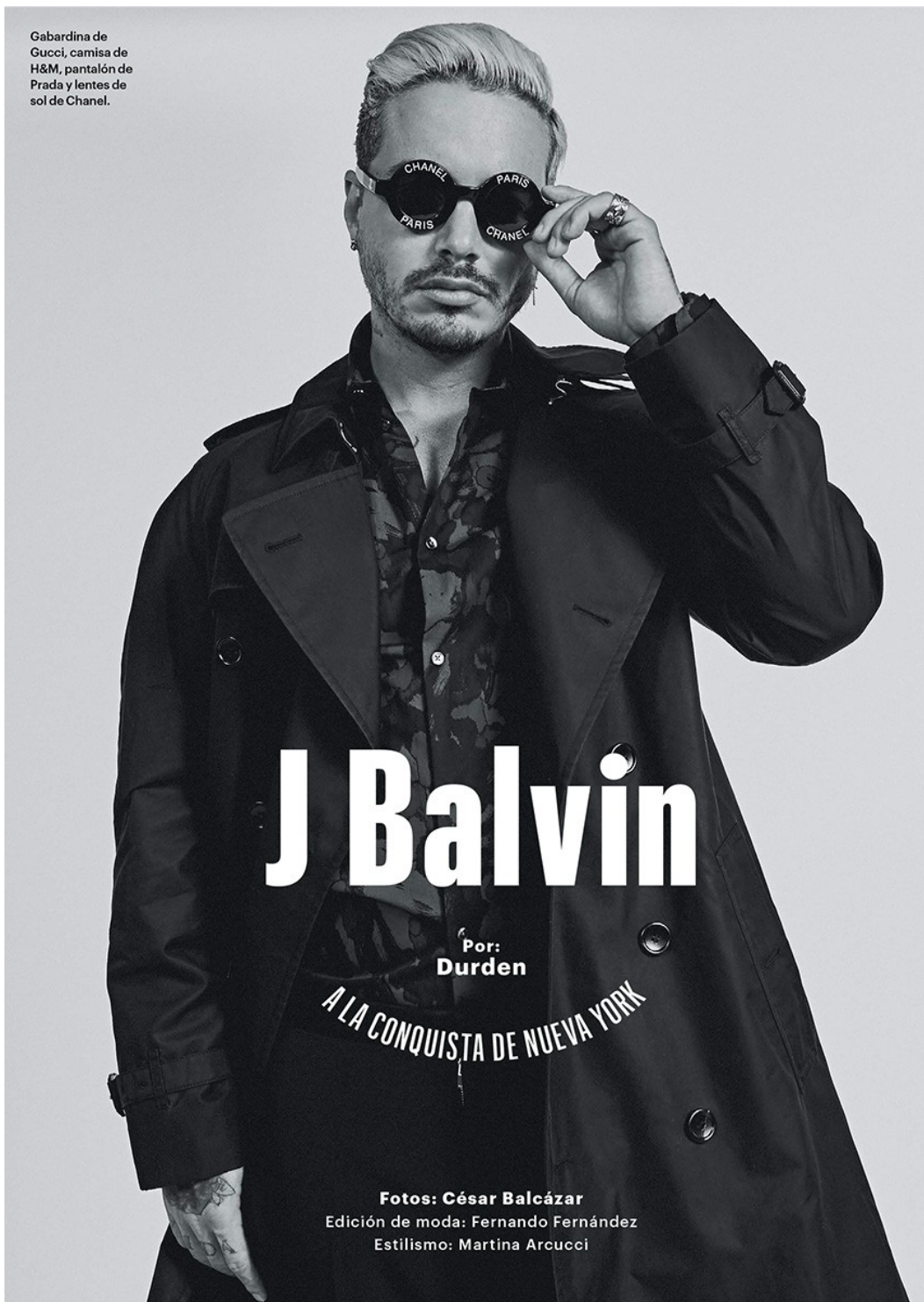
Art Department



Sandrine Van Slee

www.art-dept.com

Art Department



Sandrine Van Slee

www.art-dept.com

Art Department



Sandrine Van Slee

www.art-dept.com

Art Department



Sandrine Van Slee

www.art-dept.com

Art Department



Sandrine Van Slee

www.art-dept.com

Art Department

The New York Times Magazine
NOVEMBER 9, 2003 / SECTION 6

'Tis
the Oscar-scheming, novel-adapting,
release-date-juggling, upper-mid-brow-seducing, period-recreating,
art-budget-breaking,
grown-up-pleasure-making prestige film season.
The Annual Movie Issue

Sandrine Van Slee

www.art-dept.com

Art Department



CÉSAR VEGA
Coffee Entrepreneur

Sandrine Van Slee

www.art-dept.com

Art Department



Sandrine Van Slee

www.art-dept.com

Art Department



GOOD
TIDINGS

COLEHAAN

GREAT
SAVINGS
TO ALL

50-70% OFF
ENTIRE
SELECTION*

**Suggested Retail Prices at
Cole Haan Outlet Stores*

Sandrine Van Slee

www.art-dept.com

Art Department



Sandrine Van Slee

www.art-dept.com

Art Department



Sandrine Van Slee

www.art-dept.com

Art Department



► Von links: Anzug, JOOP, 450 Euro. Pullover, BOTTEGA VENETA, 520 Euro

► Jeansjacke, WRANGLER, 220 Euro. Jeans, WOOLRICH, 150 Euro. Baseballmütze, NEW ERA, 40 Euro. Lederrucksack, TRUSSARDI 1911, 1100 Euro. T-Shirt, AMERICAN APPAREL, 18 Euro

► Smokingjacke, LAGERFELD, 450 Euro. Hemd, GIVENCHY BY RICCARDO TISCI, 370 Euro. Hose, AGNE, 200 Euro

► Hemd, POLO RALPH LAUREN, 150 Euro. Jeans, WOOLRICH, 130 Euro. Krawatte, GIVENCHY BY RICCARDO TISCI, 95 Euro. Gürtel, TRUSSARDI 1911, 200 Euro

► Lederweste, 750 Euro, und Hoodie, 505 Euro, beides PATRIK ERVELL. Längermisshirt, 375 Euro, und Hose, 550 Euro, beides DIOR HOMME

Februar 2012 - GQ, DE 143

Sandrine Van Slee

www.art-dept.com

Art Department



Février 2012 - GQ DE 133

Sandrine Van Slee

www.art-dept.com

Art Department



Sandrine Van Slee

www.art-dept.com

Art Department

STYLE / Die Mustermänner

TREND



SCHLANGEN- LEDER

Der Trend begann vergangenes Jahr in der Frauenmode, nun wird Python- und Boa-Leder auch in Männerkollektionen für Accessoires, Jacken und Mäntel benutzt. Tierfreunde bekommen den Look natürlich auch als Print

► **Van Anks**: Pythonmantel, **HERMÈS**, 14 800 Euro. Anzug, **BOSS SELECTION**, 700 Euro. Saftshemd, **TOM FORD**, 320 Euro. Krawatte, **McNEAL**, 40 Euro. Uhr „Flagship Heritage“, **LONGINES**, 1160 Euro

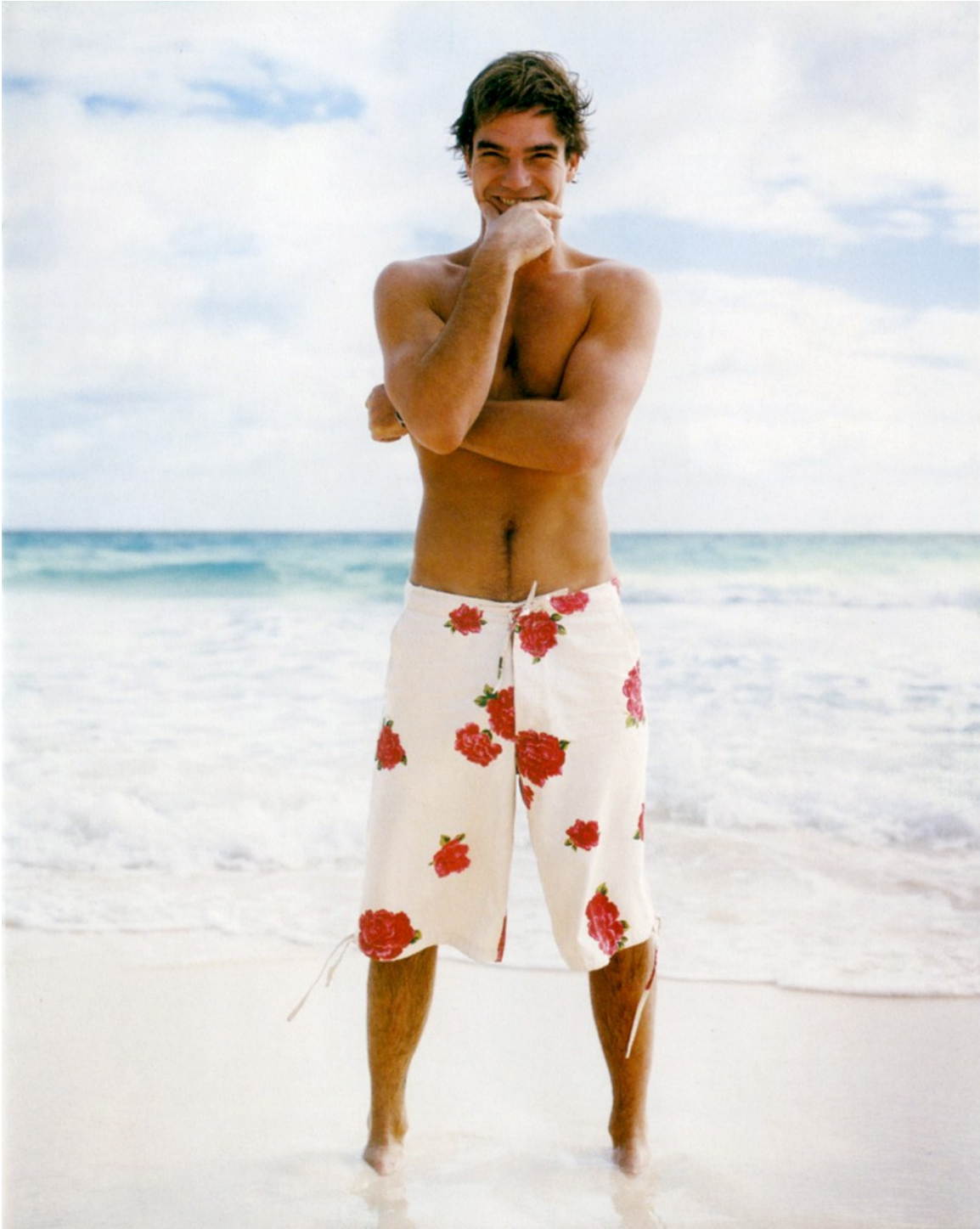
► Blauson mit Pythondruck, **YVES SAINT LAURENT RIVE GAUCHE**, 1290 Euro. Reliësqantopullover, **ETRO**, 125 Euro. Hase, **TRUSSARDI 1911**, 470 Euro

140 GQ.DE - Februar 2012

Sandrine Van Slee

www.art-dept.com

Art Department



Sandrine Van Slee

www.art-dept.com

Art Department



Sandrine Van Slee

www.art-dept.com

Art Department



Sandrine Van Slee

www.art-dept.com

Art Department



Sandrine Van Slee

www.art-dept.com

Art Department



Sandrine Van Slee

www.art-dept.com

Art Department



КОЖАНАЯ КУРТКА, СУИСС;
ТОПСТВОВКА ИЗ ХЛОПКА,
ТРИКОТАЖНЫЕ БРЮКИ, ВСЁ
ICEBERG; КОЖАНЫЕ ПЕРЧАТКИ,
ERMEGENILDO ZEGNA.

164 00 НОЯБРЬ 2014

Sandrine Van Slee

www.art-dept.com

Art Department



Sandrine Van Slee

www.art-dept.com

Art Department



Sandrine Van Slee

www.art-dept.com

Art Department



Sandrine Van Slee

www.art-dept.com

Art Department



Sandrine Van Slee

www.art-dept.com

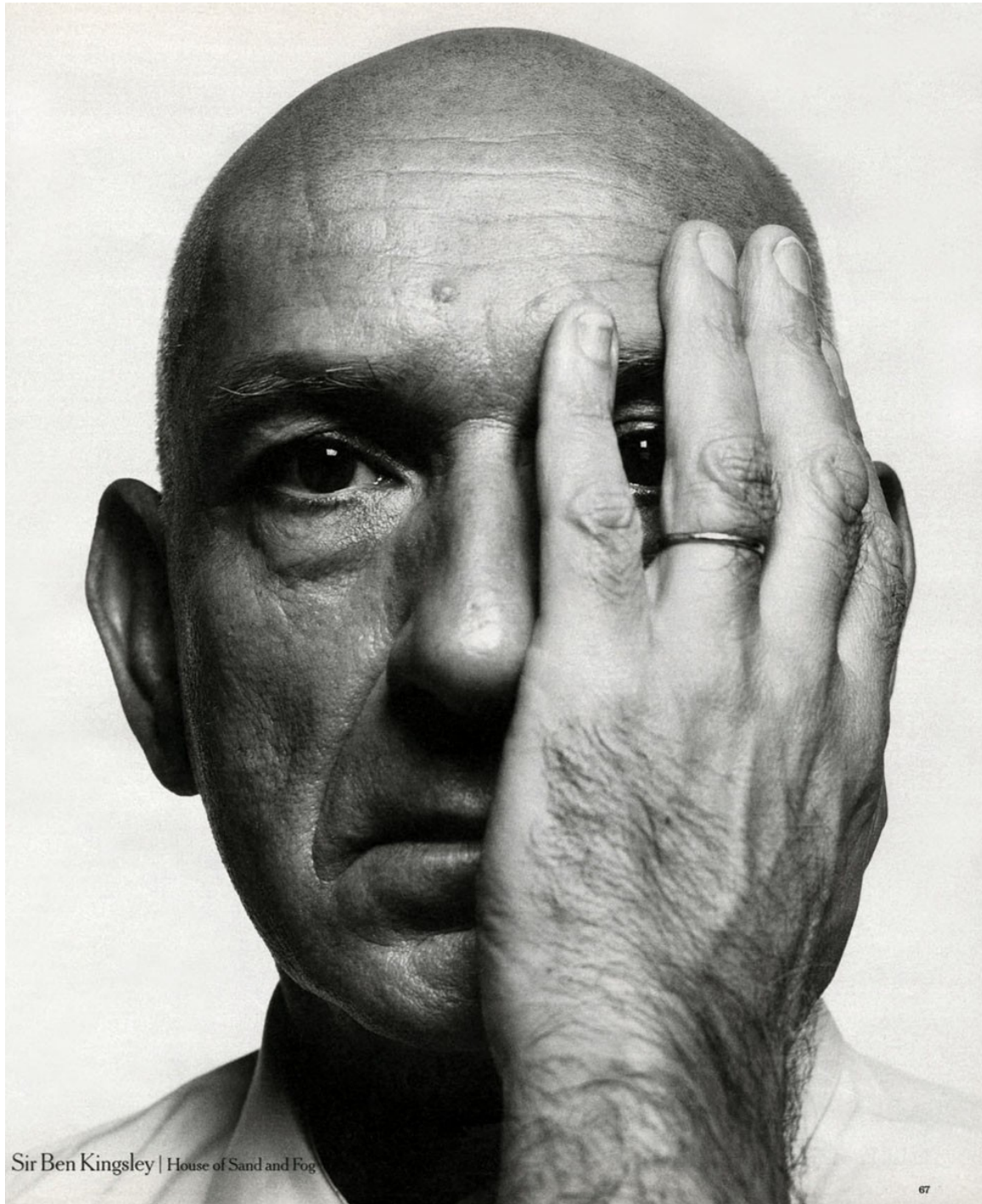
Art Department



Sandrine Van Slee

www.art-dept.com

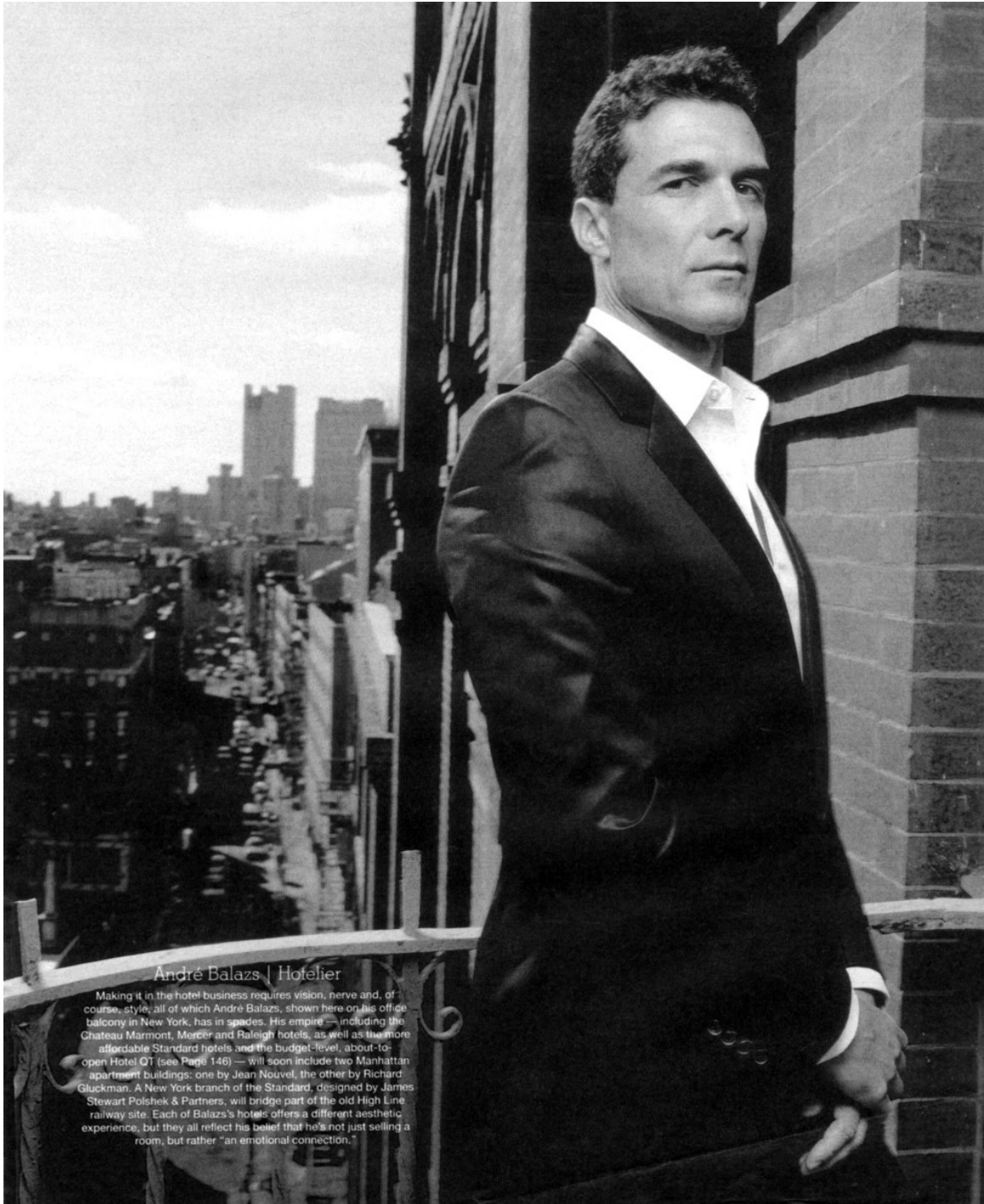
Art Department



Sandrine Van Slee

www.art-dept.com

Art Department



Sandrine Van Slee

www.art-dept.com

Art Department



Sandrine Van Slee

www.art-dept.com

Art Department

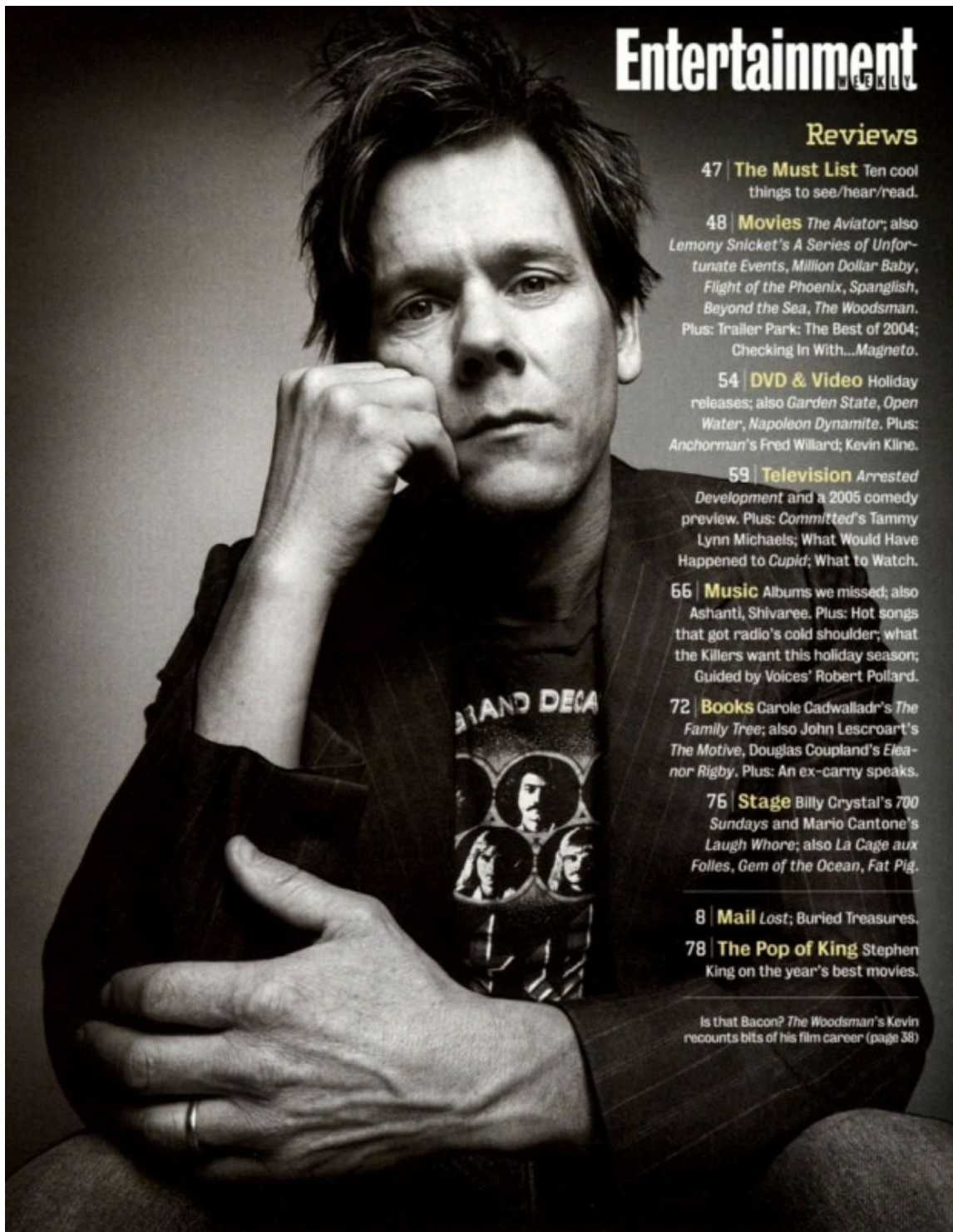
Charlie Hunnam by Bruce Weber



Sandrine Van Slee

www.art-dept.com

Art Department



Entertainment

Reviews

47 | The Must List Ten cool things to see/hear/read.

48 | Movies *The Aviator*; also Lemony Snicket's *A Series of Unfortunate Events*, *Million Dollar Baby*, *Flight of the Phoenix*, *Spanglish*, *Beyond the Sea*, *The Woodsman*. Plus: Trailer Park: The Best of 2004; Checking In With...*Magneto*.

54 | DVD & Video Holiday releases; also *Garden State*, *Open Water*, *Napoleon Dynamite*. Plus: *Anchorman*'s Fred Willard; Kevin Kline.

59 | Television *Arrested Development* and a 2005 comedy preview. Plus: *Committed*'s Tammy Lynn Michaels; What Would Have Happened to *Cupid*; What to Watch.

66 | Music Albums we missed; also Ashanti, Shivaree. Plus: Hot songs that got radio's cold shoulder; what the Killers want this holiday season; Guided by Voices' Robert Pollard.

72 | Books Carole Cadwalladr's *The Family Tree*; also John Lescroart's *The Motive*, Douglas Coupland's *Eleanor Rigby*. Plus: An ex-carry speaks.

76 | Stage Billy Crystal's *700 Sundays* and Mario Cantone's *Laugh Whore*; also *La Cage aux Folles*, *Gem of the Ocean*, *Fat Pig*.

8 | Mail Lost; Buried Treasures.

78 | The Pop of King Stephen King on the year's best movies.

Is that Bacon? *The Woodsman*'s Kevin recounts bits of his film career (page 38)

Sandrine Van Slee

www.art-dept.com

Art Department

A black and white photograph of a man with a beard and short hair, wearing a dark suit jacket over a white shirt, walking on a city street. The background shows tall buildings and other pedestrians. The man is looking directly at the camera.

Costa and Jagger, as fabulous as ever in a chic white suit, hitting the streets of New York. Jacket and pants, by special order, Calvin Klein Collection. 212-929-9000. Fashion editor: **Melissa Rubini**

WHEN
FRANCISCO
MET
BIANCA

The CALVIN KLEIN creative director arrived in New York at 21, barely speaking English but with a DREAM to design. Here he encounters one of his first icons, eternal fashion muse and activist BIANCA JAGGER.

Photographs by BRUCE GILDEN

236

Sandrine Van Slee

www.art-dept.com

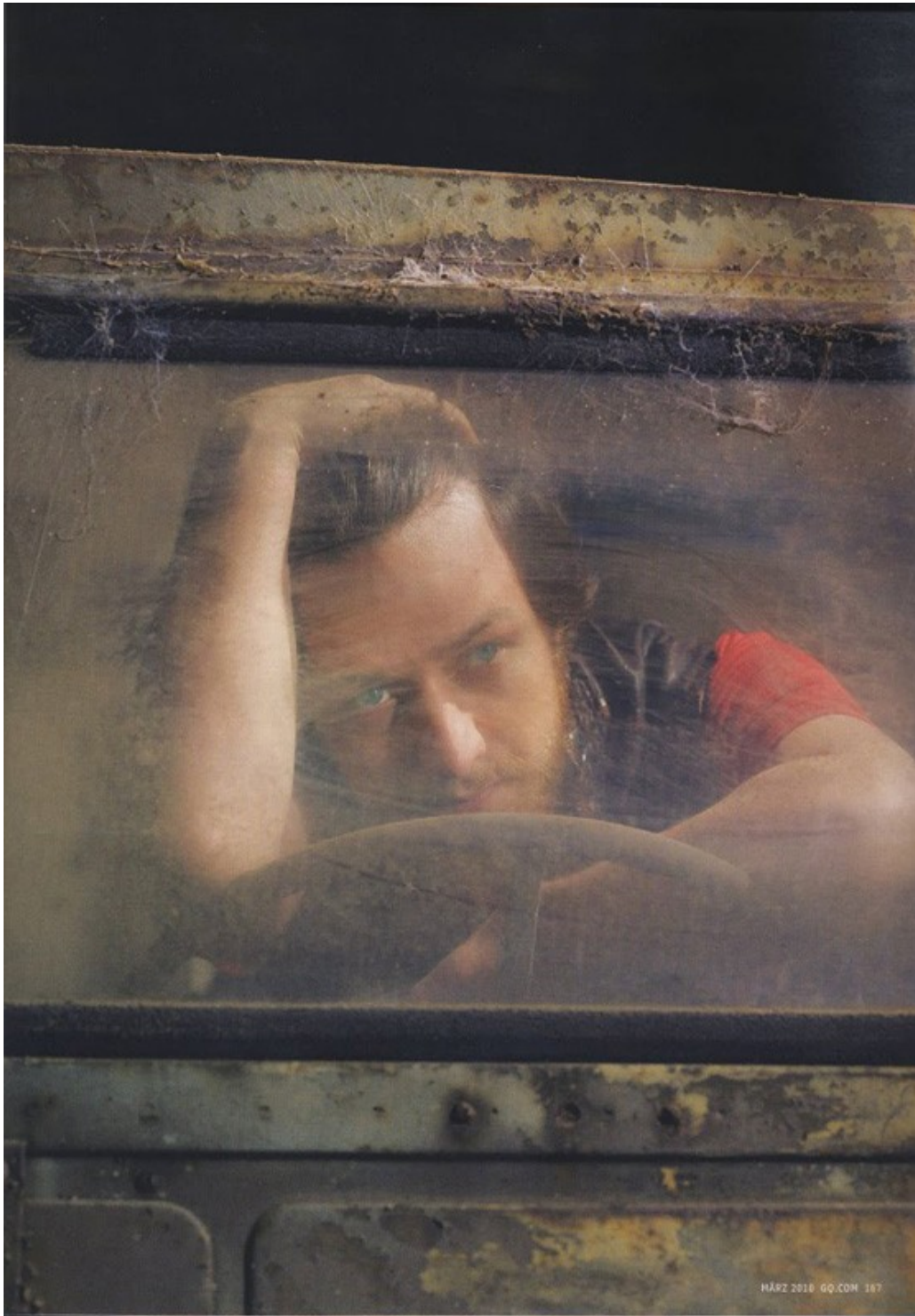
Art Department



Sandrine Van Slee

www.art-dept.com

Art Department



Sandrine Van Slee

www.art-dept.com

Art Department



Sandrine Van Slee

www.art-dept.com

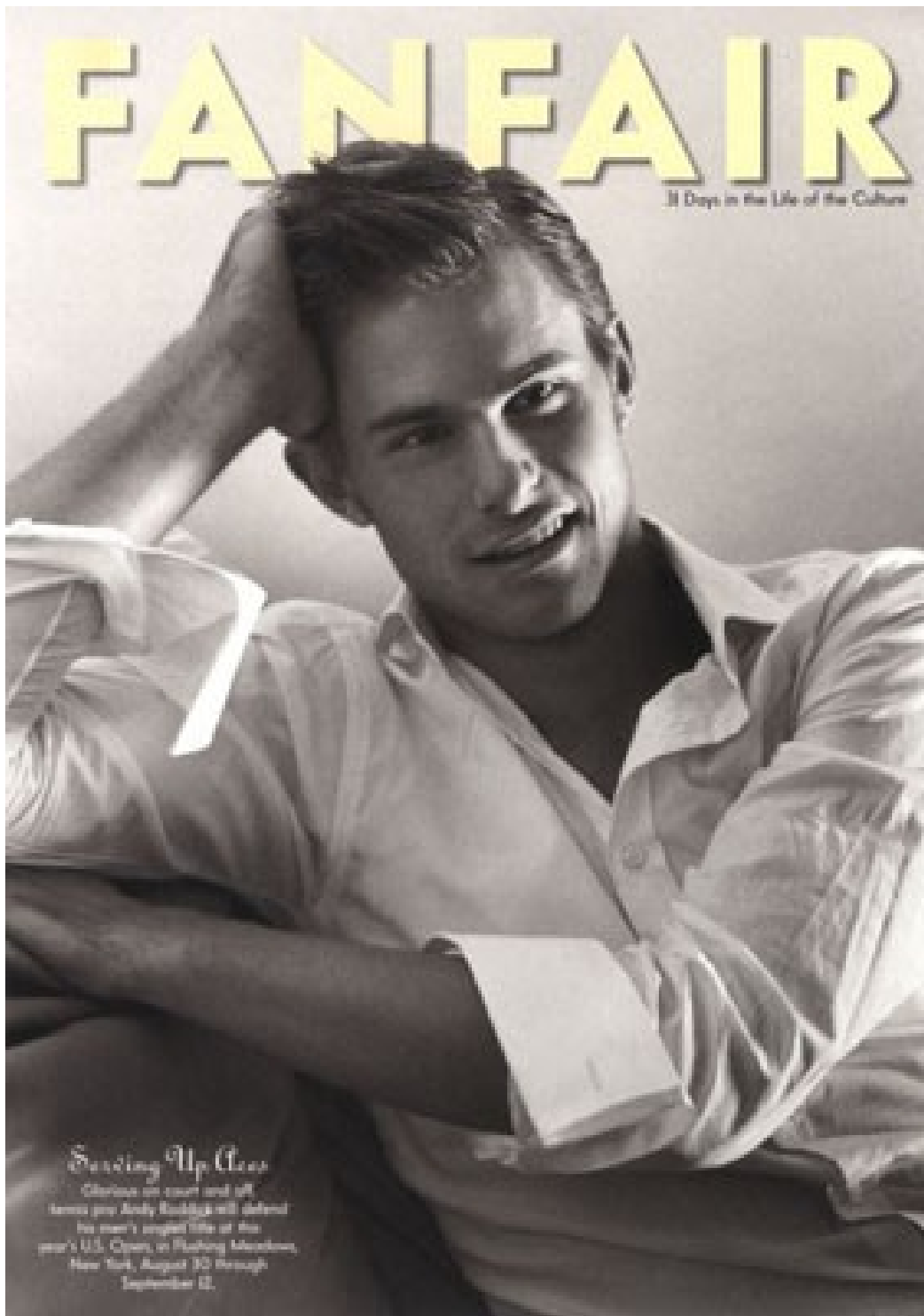
Art Department



Sandrine Van Slee

www.art-dept.com

Art Department



Sandrine Van Slee

www.art-dept.com

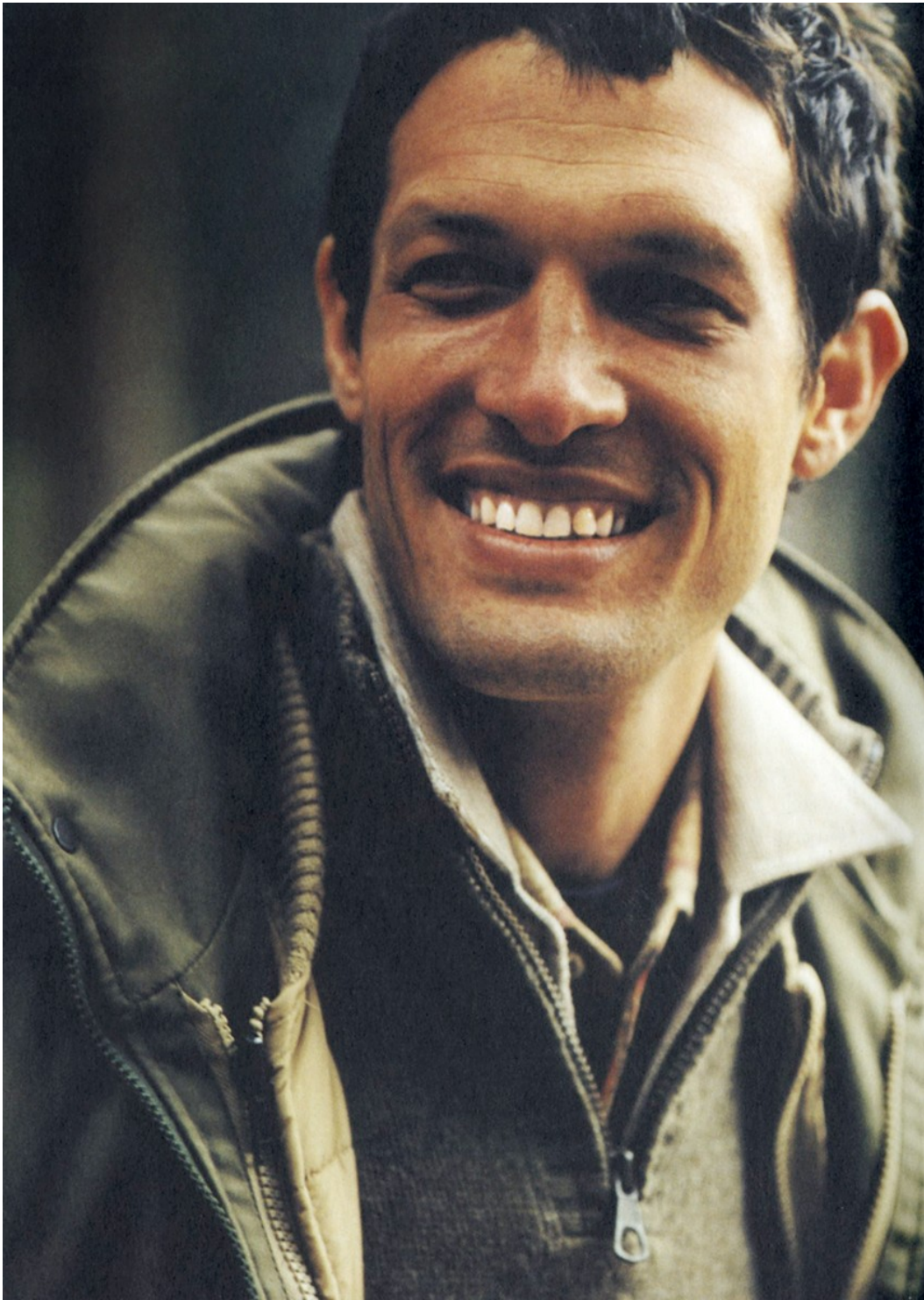
Art Department



Sandrine Van Slee

www.art-dept.com

Art Department



Sandrine Van Slee

www.art-dept.com