

# Art Department



Sandrine Van Slee



# Art Department



Sandrine Van Slee

[www.art-dept.com](http://www.art-dept.com)



# Art Department



Sandrine Van Slee

[www.art-dept.com](http://www.art-dept.com)



# Art Department



Sandrine Van Slee

[www.art-dept.com](http://www.art-dept.com)



# Art Department



Sandrine Van Slee



# Art Department



Sandrine Van Slee



# Art Department



Sandrine Van Slee

[www.art-dept.com](http://www.art-dept.com)

# Art Department



## A STAR IS BORN

In december zijn we niet bang voor een beetje glitter en glam. Subtiel of all over, in bronzen tinten of smart zwart: jij steelt de show op feesten én shinet overdag onverminderd door in glitterjurk met een oversized jas en stoere boots. Fotografie Anders Overgaard

STYLING LINDA GUMUS-GERRITSEN © SARAH LAIRD HAAR & MAKE UP SANDRINE VAN SLEE © ART-DEPARTMENT VOOR CHANEL FOTOGRAFIE-ASSISTENT JOHN LAW STYLING ASSISTENT INGÉ DE RIDDER MODEL ASTRID © ULLA MODELS MET DANK AAN BLUE AND WHITE MOTEL INC. KALISPEL MONTANA EN BULLDOG SALOON AND GRILL WHITEFISH MONTANA PRODUCER PAULA PENNING

94 JAN

## Sandrine Van Slee

[www.art-dept.com](http://www.art-dept.com)



# Art Department



Sandrine Van Slee

[www.art-dept.com](http://www.art-dept.com)



# Art Department



Sandrine Van Slee

[www.art-dept.com](http://www.art-dept.com)



# Art Department



Sandrine Van Slee

[www.art-dept.com](http://www.art-dept.com)

# Art Department



Sandrine Van Slee

[www.art-dept.com](http://www.art-dept.com)



# Art Department



Sandrine Van Slee

[www.art-dept.com](http://www.art-dept.com)



# Art Department



Sandrine Van Slee

[www.art-dept.com](http://www.art-dept.com)



# Art Department



Sandrine Van Slee

[www.art-dept.com](http://www.art-dept.com)

# Art Department



Sandrine Van Slee

[www.art-dept.com](http://www.art-dept.com)



# Art Department



Sandrine Van Slee

[www.art-dept.com](http://www.art-dept.com)

# Art Department



Sandrine Van Slee

[www.art-dept.com](http://www.art-dept.com)



# Art Department



Sandrine Van Slee

[www.art-dept.com](http://www.art-dept.com)



# Art Department



Sandrine Van Slee

[www.art-dept.com](http://www.art-dept.com)



# Art Department



Sandrine Van Slee

[www.art-dept.com](http://www.art-dept.com)

# Art Department



Sandrine Van Slee

[www.art-dept.com](http://www.art-dept.com)



# Art Department



Sandrine Van Slee

[www.art-dept.com](http://www.art-dept.com)



# Art Department



Sandrine Van Slee

[www.art-dept.com](http://www.art-dept.com)



# Art Department



Sandrine Van Slee

[www.art-dept.com](http://www.art-dept.com)



# Art Department



Sandrine Van Slee

[www.art-dept.com](http://www.art-dept.com)



# Art Department



Sandrine Van Slee

[www.art-dept.com](http://www.art-dept.com)



# Art Department



Sandrine Van Slee

[www.art-dept.com](http://www.art-dept.com)



# Art Department



Sandrine Van Slee

[www.art-dept.com](http://www.art-dept.com)



# Art Department



Sandrine Van Slee

[www.art-dept.com](http://www.art-dept.com)



# Art Department



Sandrine Van Slee

[www.art-dept.com](http://www.art-dept.com)

# Art Department

AN EYE-CATCHING HUE WITH UTILITARIAN ROOTS, SAFETY ORANGE IS EMERGING ON EVERYTHING FROM SLEEK NYLON TO RICH LEATHER, ENSURING THIS SEASON'S ACCESSORIES DON'T FADE INTO THE BACKGROUND

*Photographs by*  
**Ester Grass Vergara**

**range**

**look here**  
THIS PAGE: COAT, \$2,300, BOOTS, \$2,800, BAG, \$2,200, CALVIN KLEIN 205W39NYC.  
OPPOSITE PAGE: SUNGLASSES, PRICE UPON REQUEST, ALTUZARRA.  
ON FACE: AVON ANEW SKIN VINCIBLE DAY LOTION BROAD SPECTRUM SPF 50.

*Fashion Editor:* **Julia Gall**

Sandrine Van Slee

[www.art-dept.com](http://www.art-dept.com)



# Art Department



## cAn't miss

THIS PAGE: COAT & BELT BAG, PRICES UPON REQUEST, TOD'S.

ON HAIR: KÉRASTASE DISCIPLINE MOUSSE CURL IDÉAL.

OPPOSITE PAGE: JACKET, PRICE UPON REQUEST, BALLY; SKIRT, \$595, R13; BOOTS, \$298, STUART WEITZMAN.

FOR STORES, SEE SHOPPING DIRECTORY.

HAIR & MAKEUP: SANDRINE VAN SLEE FOR CHANEL AT ART DEPARTMENT

MANICURE: KAYO HIGUCHI FOR CHANEL AT BRYAN BANTRY

MODEL: AMELIA RAMI AT HEROES MODEL MANAGEMENT

SET DESIGN: BETTE ADAMS FOR MHS ARTISTS

208

## Sandrine Van Slee

[www.art-dept.com](http://www.art-dept.com)

# Art Department



Sandrine Van Slee

[www.art-dept.com](http://www.art-dept.com)



# Art Department



## Summer loving

*Some vacation memories  
stay with you long after your tan  
has faded. Here, 10 super-chic  
women share the stories behind the  
adventures they will never forget.*

*By OLIVE WAKEFIELD*

*Photographs by TOM CRAIG  
Styling by CARMEN BORGONOVO*

consult by Karla  
Netto

## Sandrine Van Slee

[www.art-dept.com](http://www.art-dept.com)

# Art Department



Sandrine Van Slee

[www.art-dept.com](http://www.art-dept.com)



# Art Department



Sandrine Van Slee

[www.art-dept.com](http://www.art-dept.com)

# Art Department



Sandrine Van Slee

[www.art-dept.com](http://www.art-dept.com)



# Art Department



Sandrine Van Slee

[www.art-dept.com](http://www.art-dept.com)

# Art Department



Sandrine Van Slee

[www.art-dept.com](http://www.art-dept.com)



# Art Department



Sandrine Van Slee

[www.art-dept.com](http://www.art-dept.com)

# Art Department



Sandrine Van Slee

[www.art-dept.com](http://www.art-dept.com)



# Art Department



Sandrine Van Slee

[www.art-dept.com](http://www.art-dept.com)

# Art Department



Sandrine Van Slee

[www.art-dept.com](http://www.art-dept.com)



# Art Department



Sandrine Van Slee

[www.art-dept.com](http://www.art-dept.com)

# Art Department



Sandrine Van Slee

[www.art-dept.com](http://www.art-dept.com)



# Art Department



Sandrine Van Slee

[www.art-dept.com](http://www.art-dept.com)

# Art Department



Sandrine Van Slee

[www.art-dept.com](http://www.art-dept.com)



# Art Department



Sandrine Van Slee

[www.art-dept.com](http://www.art-dept.com)

# Art Department



Sandrine Van Slee

[www.art-dept.com](http://www.art-dept.com)



# Art Department



Sandrine Van Slee



# Art Department



Sandrine Van Slee



# Art Department



Sandrine Van Slee

[www.art-dept.com](http://www.art-dept.com)

# Art Department



Sandrine Van Slee

[www.art-dept.com](http://www.art-dept.com)



# Art Department



Sandrine Van Slee

[www.art-dept.com](http://www.art-dept.com)

# Art Department



Sandrine Van Slee

[www.art-dept.com](http://www.art-dept.com)



# Art Department



The BA Q&A



## Christina Tosi

The Milk Bar pastry queen and *MasterChef* judge on the challenges of reality TV and her biggest disappointment in the kitchen (hint: it involves gummi bears)



## Sandrine Van Slee

[www.art-dept.com](http://www.art-dept.com)

# Art Department



Sandrine Van Slee

www.art-dept.com



# Art Department



Sandrine Van Slee

[www.art-dept.com](http://www.art-dept.com)

# Art Department



Sandrine Van Slee

[www.art-dept.com](http://www.art-dept.com)



# Art Department



Sandrine Van Slee

[www.art-dept.com](http://www.art-dept.com)

# Art Department



Sandrine Van Slee

[www.art-dept.com](http://www.art-dept.com)



# Art Department



Sandrine Van Slee

[www.art-dept.com](http://www.art-dept.com)

# Art Department



Sandrine Van Slee

[www.art-dept.com](http://www.art-dept.com)



# Art Department



Sandrine Van Slee

[www.art-dept.com](http://www.art-dept.com)

# Art Department



## Así es Ali Michael, nuestra TOP de portada

Vegana, aficionada a los videojuegos y a la hípica, se ha convertido en el rostro visible de la lucha para que las «modelos sanas» dominen las pasarelas.

**L**lega la primera, pero no se enfriaca en el móvil: interroga al equipo de YO DONA sobre su horóscopo. No el signo del zodiaco a secas, no «ella es Tauro», sino el ascendente y la posición de Venus en sus cartas astrales. Descodica a todos con su exhaustivo interés en estas cuestiones, pero pronto baja a la Tierra al dejar su maleta de mano en el suelo. «Voy a Los Ángeles y siempre llevo ligera de equipaje», explica Alexandra Michael «Al para la industria de la moda», la tío estadounidense conocida por sus ojos, sus fotos con Terry Richardson, Paolo Foversi, Mario Gormi o Patrick Demarchelier, y la polémica sobre el peso en la que se vio envuelta en febrero de 2008. La texana, de 23 años, pasó de ser una cara fresca «new face» en el argot del mundillo en la portada del W, retratada por Craig McDean, a poco menos que una apestada. En plena Semana de la Moda de París, la despidieron porque, según los directores de casting, no era lo suficientemente estilizada como para caminar por la pasarela. Su madre, Mary Ann, lo contó, y Michael, que entonces contaba con 17 años, protagonizó un sonado artículo en el Wall Street Journal que cuestionaba no ya el peso puma de las

modelos, sino la presión que debían soportar para, como ella, pasar de unos saludables 50 kilos a 46 «más 1,75», dejándose la salud en el camino. Michael no tuvo la regla durante un año como consecuencia de un régimen que se reducía a avena con agua para desayunar, uvas en el almuerzo y leche de soja.

Dio su prometedora carrera por zanjada, pero pronto cayó en la cuenta de que, en realidad, estaba ante la oportunidad de «ayudar a otras personas», lograr que las modelos sanas «dominen las pasarelas para atraer de nuevo el interés de la gente en la moda», confesó a la periodista Patti Huntington. En lugar de encerrarse en su hogar texano, Michael habló en los medios del asunto. Y la industria que la despachó en febrero con un abrupto «tus pechos son gordos» la recibió con los brazos abiertos en mayo. Ha sido portada del número de otoño-invierno de Purple «la del vigésimo aniversario de la publicación, entre otras, y protagonizado numerosos editoriales. Además, ha desfilado para Yohji Yamamoto «el único a quien su peso no pareció incomodar en la infuista temporada otoño-invierno 2008/09», Philip Lim, Sonia Rykiel o Burberry Prorsum, y puesto cara al perfume Jeanne Lanvin de la casa francesa. Le encantan los videojuegos y la hípica, es vegana y entre sus amigas están Meghan Colison y Karlie Kloss. Intima de ello en su Twitter a sus 6.563 seguidores que, a estas alturas, ya se habrán dado cuenta de que las agónicas conciones de Thom Yorke han dado paso al RnB de Rihanna y Beyoncé o al hip hop de Frank Ocean, con quien, por cierto, no le importaría casarse. En broma, claro. Vive con su novio y «mejor amigo» desde 2004, el guitarrista David Broderick. *Publicado: Nivea*



## Sandrine Van Slee



# Art Department



Sandrine Van Slee

[www.art-dept.com](http://www.art-dept.com)

# Art Department



Sandrine Van Slee

[www.art-dept.com](http://www.art-dept.com)



# Art Department



Sandrine Van Slee

[www.art-dept.com](http://www.art-dept.com)

# Art Department



Sandrine Van Slee

[www.art-dept.com](http://www.art-dept.com)



# Art Department



Sandrine Van Slee

[www.art-dept.com](http://www.art-dept.com)

# Art Department



Sandrine Van Slee

[www.art-dept.com](http://www.art-dept.com)



# Art Department



Sandrine Van Slee

[www.art-dept.com](http://www.art-dept.com)

# Art Department



X

**HALSTON HERITAGE**  
wool coat and asymmetrical gown with belt; [HALSTON.COM](http://HALSTON.COM); OPPOSITE: **NARS** Audacious mascara in Black Moon; **NARS COSMETICS.COM**. For prices and links to products, go to [more.com/wheretobuy](http://more.com/wheretobuy). ©

X

**HAIR AND MAKEUP:** SANDRINE VAN SLEE USING DIORSHOW AND ORIBE HAIR CARE AT ART DEPARTMENT; NAILS: MAYUMI ABUKU USING DIOR VERNIS AT RONA REPRESENTS; PROP STYLIST: SONIA RENTSCH; CASTING: ALINA ZAKAITE; MODEL: ATONO/TRUMP MODELS

X

**WANT TO KNOW MORE ABOUT HOW TO WEAR THIS TREND AT EVERY AGE? TURN TO PAGE 92.**

90  
MOMENT SEPTEMBER 2015

## Sandrine Van Slee

[www.art-dept.com](http://www.art-dept.com)



# Art Department



Sandrine Van Slee

[www.art-dept.com](http://www.art-dept.com)

# Art Department



Sandrine Van Slee

[www.art-dept.com](http://www.art-dept.com)



# Art Department



Sandrine Van Slee

[www.art-dept.com](http://www.art-dept.com)

# Art Department



Sandrine Van Slee

[www.art-dept.com](http://www.art-dept.com)



# Art Department



Sandrine Van Slee

[www.art-dept.com](http://www.art-dept.com)

# Art Department

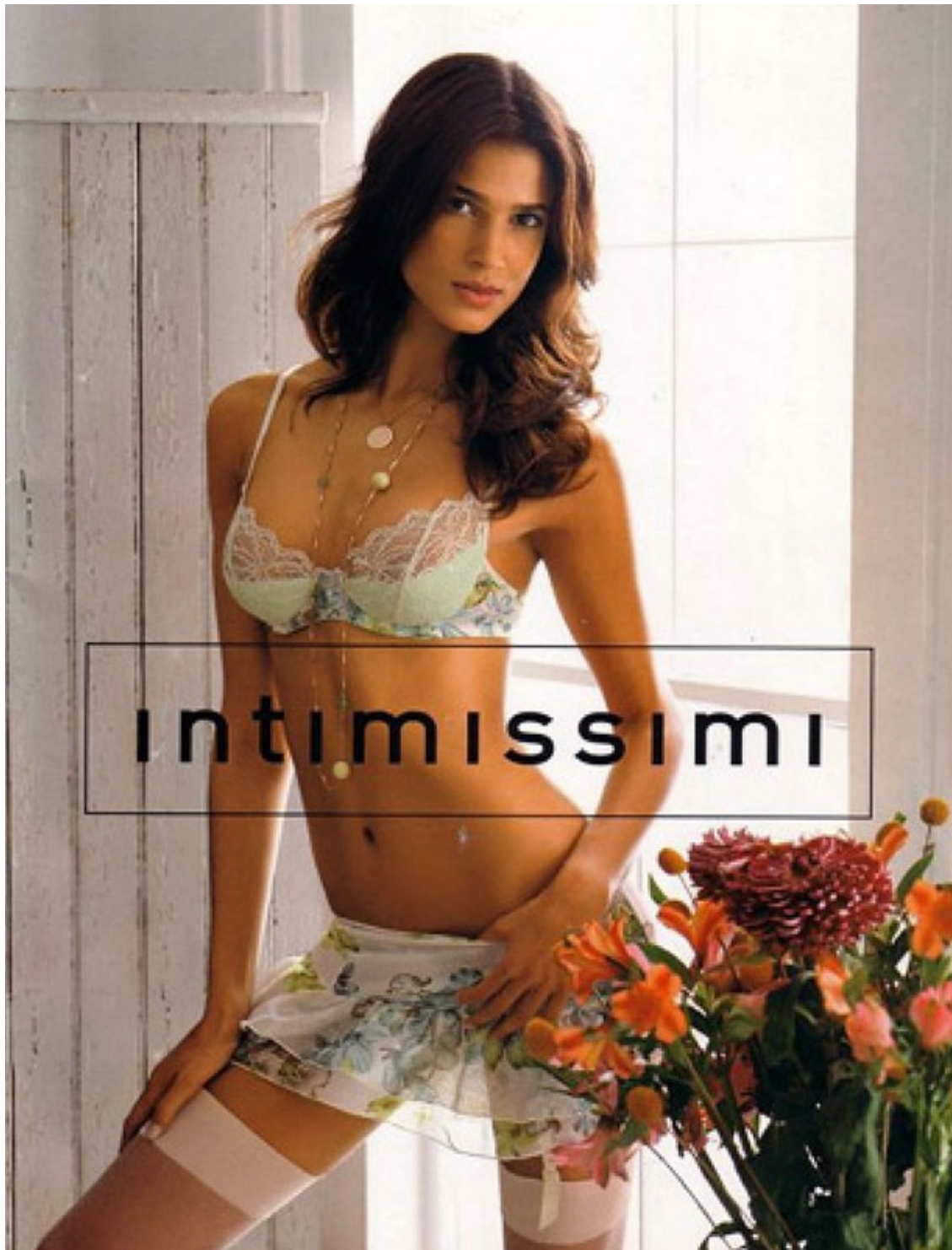


Sandrine Van Slee

[www.art-dept.com](http://www.art-dept.com)



# Art Department



Sandrine Van Slee

[www.art-dept.com](http://www.art-dept.com)

# Art Department



Sandrine Van Slee

[www.art-dept.com](http://www.art-dept.com)



# Art Department



Sandrine Van Slee

[www.art-dept.com](http://www.art-dept.com)

# Art Department



Sandrine Van Slee

[www.art-dept.com](http://www.art-dept.com)



# Art Department



Sandrine Van Slee

[www.art-dept.com](http://www.art-dept.com)

# Art Department

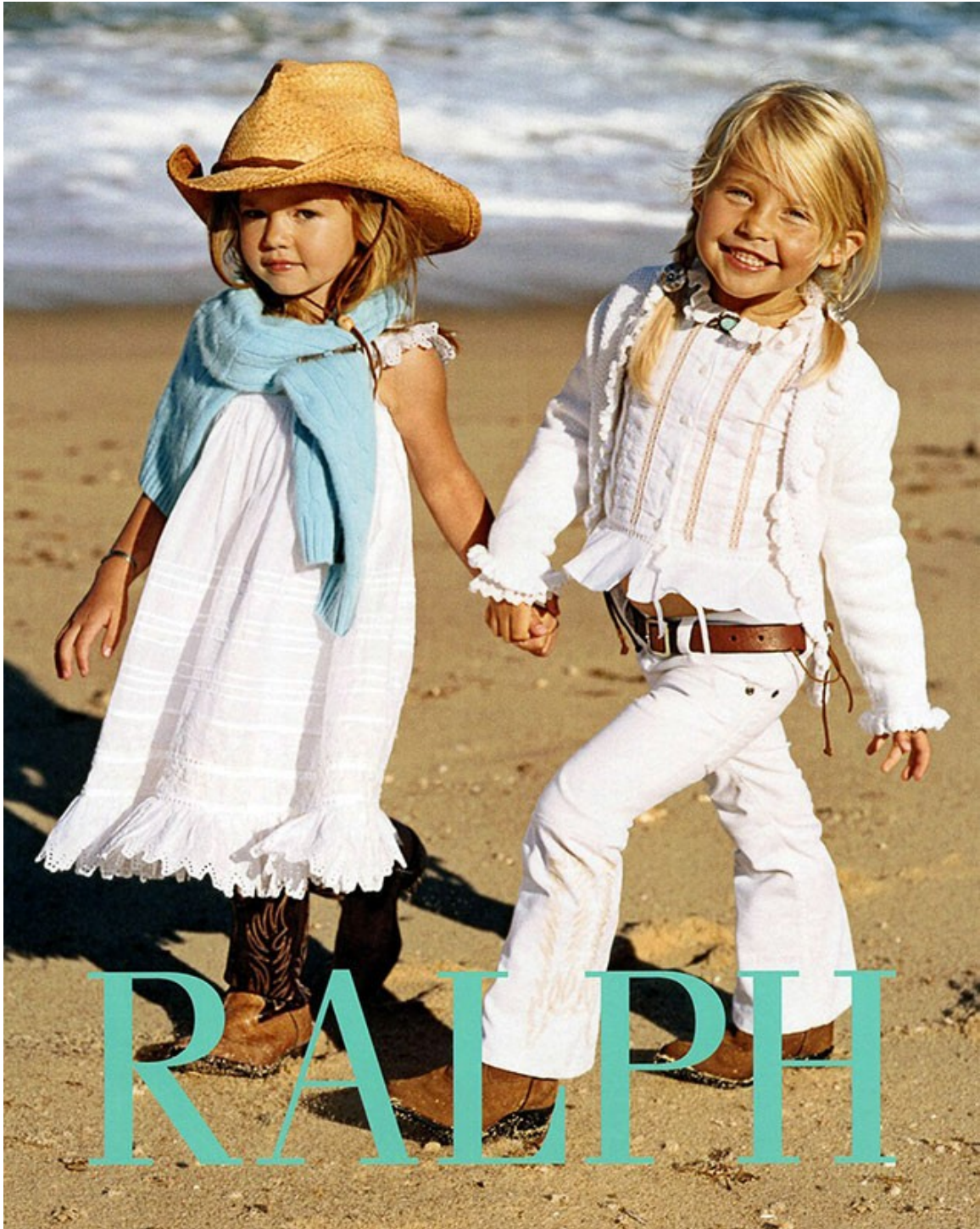


Sandrine Van Slee

[www.art-dept.com](http://www.art-dept.com)



# Art Department

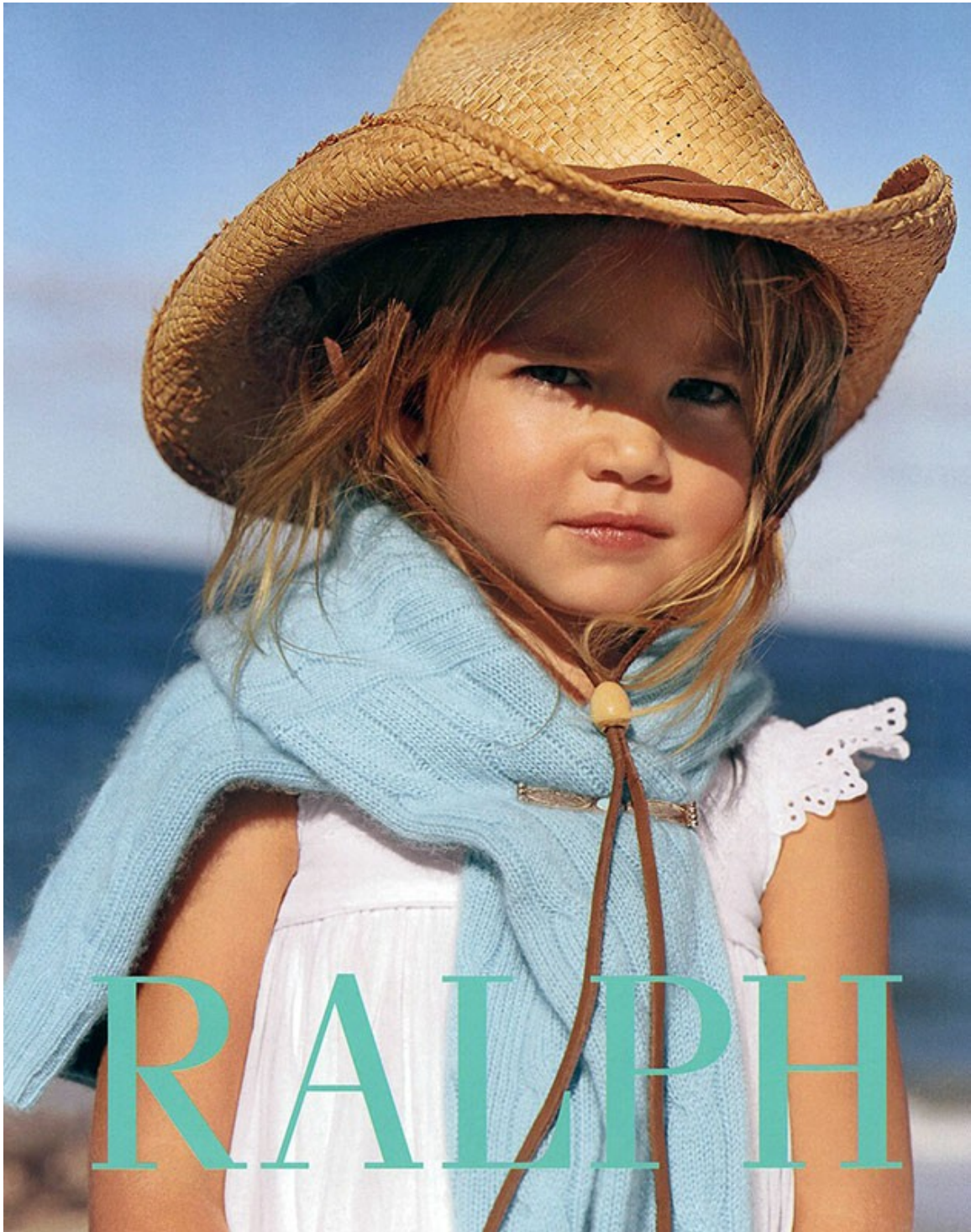


Sandrine Van Slee

[www.art-dept.com](http://www.art-dept.com)



# Art Department



Sandrine Van Slee

[www.art-dept.com](http://www.art-dept.com)



# Art Department



Sandrine Van Slee

[www.art-dept.com](http://www.art-dept.com)

# Art Department



Sandrine Van Slee



# Art Department

In questa pagina: ha ricami in pizzo l'abito con collo tondo di **Mini Ramilans**. Scarpina con cinturino di **Mirella Più**. Nella pagina accanto: abito di **Sangallo** con balze e collo evanescente di voile ricamato di **Silvia**. Bebè rosa di **Chérie**. Cappello di paglia (**Eric Javits**).



Sandrine Van Slee

[www.art-dept.com](http://www.art-dept.com)

# Art Department



Nella pagina accanto: la camicia candida di **Alberta Ferretti Girl** ha una balza plissé. Nastro (Nastrificio Topp Italiana). In questa pagina: per le bambine in piedi, abito con balza e con volant sulle maniche di **Gina Diwan, Paris**; per la bambina seduta, vestito con maniche a palloncino di **Kenzo Enfant**. Guanti (Edera), calzine (Story Loris), bébé (Chérie).

## Sandrine Van Slee

[www.art-dept.com](http://www.art-dept.com)



# Art Department



In questa pagina: una nuvola di organza ricamata per l'abito con maniche a sbuffo di Rita. Calze (Story Loris), bebè (Mini Walker). Poltrona (Polo by Ralph Lauren). Nella pagina accanto: per lui, camicia in cotone di Boy; per lei, vestito con maniche a sbuffo e colletto plissé di Gina Diwan, Paris. Bebè bianche con fiore in organza di Bloony by Moki.

## Sandrine Van Slee

[www.art-dept.com](http://www.art-dept.com)

# Art Department



Nella pagina accanto: è tempestato di ricami l'abito di Mini Ramilans. Ballerine di Mini Walker. In questa pagina: abito con collo piatto e finto gilet di Cose di Simona. Cestino (Craft Caravan). Make up e pettinature di Sandrine Van Slee per Jean G. Kauss, N.Y.C.

## Sandrine Van Slee

[www.art-dept.com](http://www.art-dept.com)



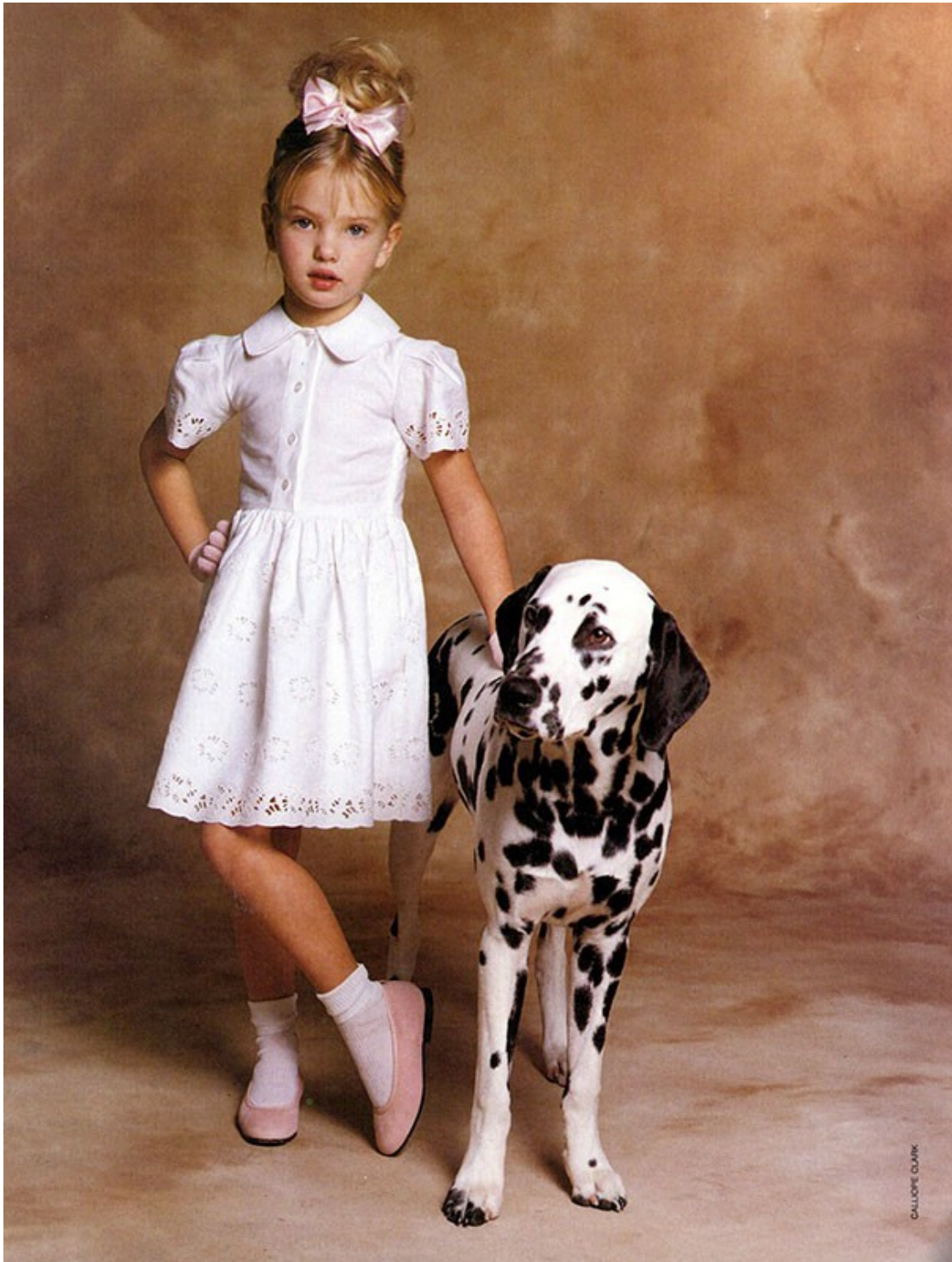
# Art Department



Sandrine Van Slee

[www.art-dept.com](http://www.art-dept.com)

# Art Department



Sandrine Van Slee

[www.art-dept.com](http://www.art-dept.com)



# Art Department



Sandrine Van Slee

[www.art-dept.com](http://www.art-dept.com)

# Art Department



Ad ognuno  
la sua scar-  
pa. Scarpe

# M o s c h i n o

di carattere  
per bambini  
di carattere.

SERIZIO PUBBLICITARIO

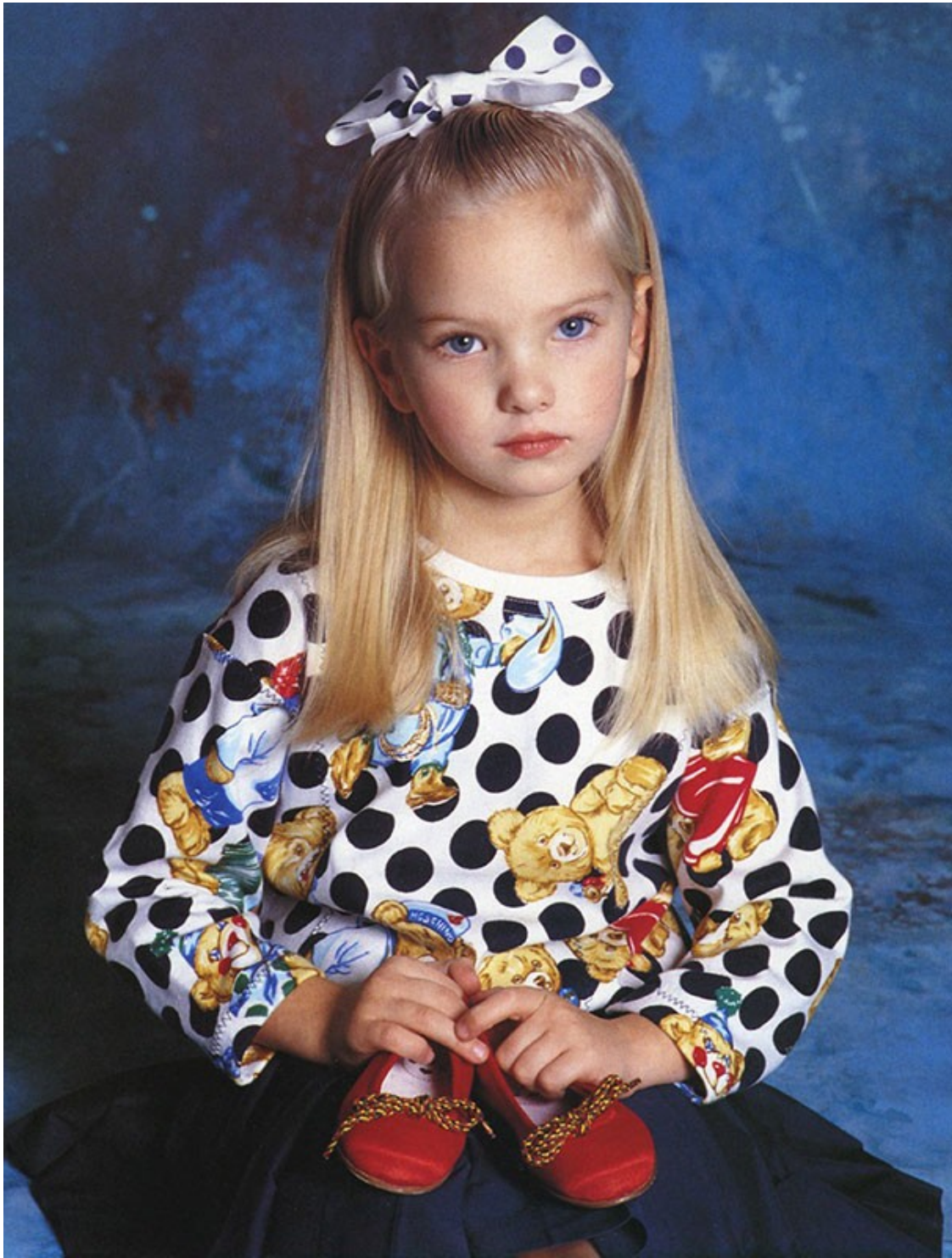


## Sandrine Van Slee

[www.art-dept.com](http://www.art-dept.com)



# Art Department



Sandrine Van Slee

[www.art-dept.com](http://www.art-dept.com)

# Art Department



Sandrine Van Slee

[www.art-dept.com](http://www.art-dept.com)



# Art Department



Le scarpe BAMBINO e JUNIOR sono prodotte e distribuite da: FALC S.p.A. - Civitanova Marche (MC) - Tel. 0733/79824

Sandrine Van Slee

[www.art-dept.com](http://www.art-dept.com)

# Art Department

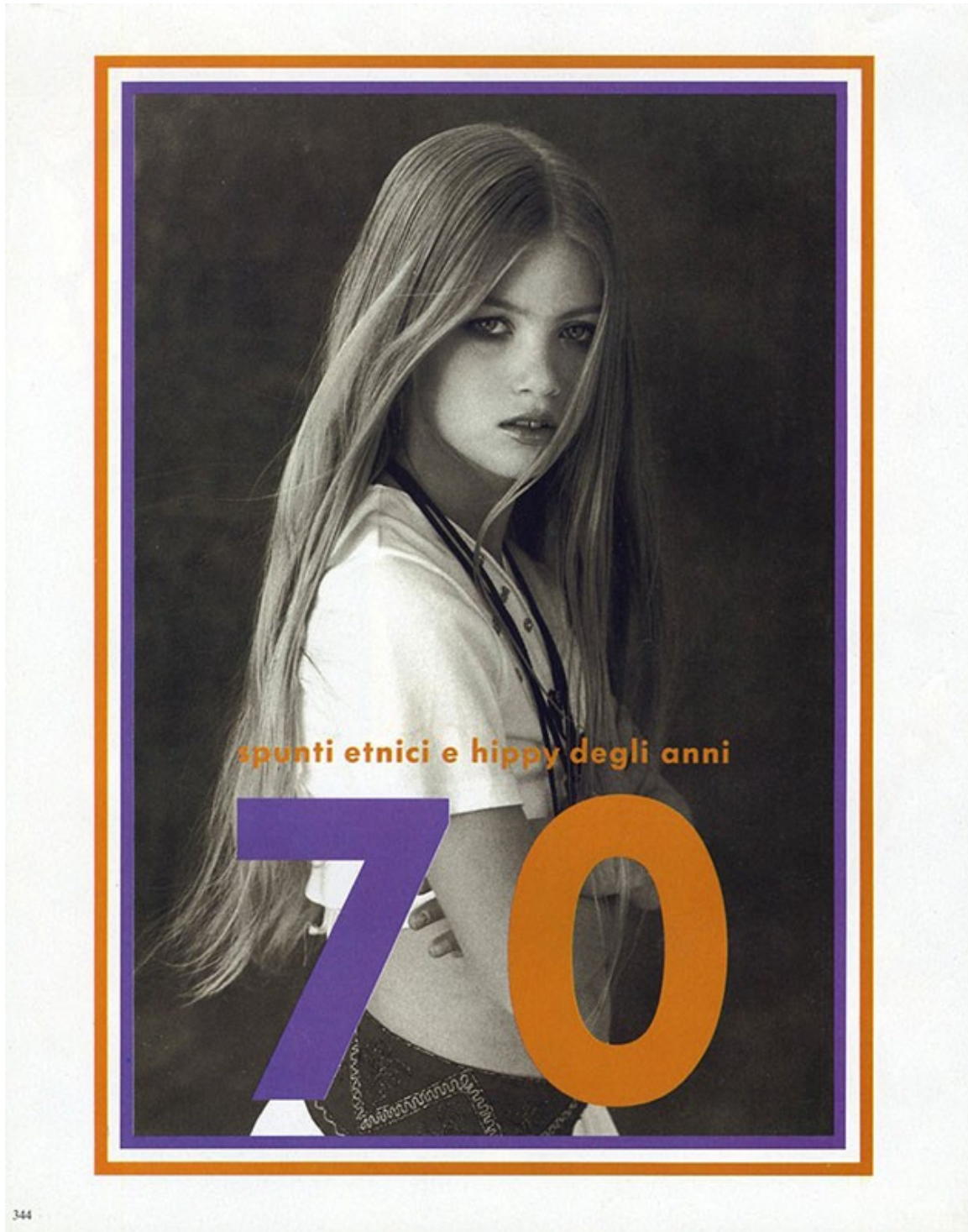


Sandrine Van Slee

[www.art-dept.com](http://www.art-dept.com)



# Art Department



Sandrine Van Slee

[www.art-dept.com](http://www.art-dept.com)

# Art Department



Sandrine Van Slee

[www.art-dept.com](http://www.art-dept.com)



# Art Department



*Opposite page, far left: Striped and dotted one-piece romper by Michael Sui for RGS, \$44. Sizes 7 to preteen. At Saks Fifth Avenue, Macy's Herald Square, Lester's, Brooklyn, Woodward & Lothrop, Washington. Belt of scarves from Bravo.*

*Center: Art to Wear print on tunic top and leggings by Kyoto, \$86. Sizes 7-14. At Just Kidding, 22 Harrison Street, Half-Pint, Sonoma, Calif., Young Land Ltd., Portland, Ore.*

*Right: Wool and cotton double-breasted crop jacket with pearl buttons, \$190. Astral designs on a denim skirt, \$190. Both by Gianni Versace. Sizes 4-8. At Saks Fifth Avenue, Life's Little Privileges, Woodbury, L.I.*

PHOTOGRAPHS BY TRACY GREENFIELD SHADERS FOR THE NEW YORK TIMES

## Sandrine Van Slee

[www.art-dept.com](http://www.art-dept.com)

# Art Department



Many of these clothes were inspired by adult fashion, but realized with a whimsical quality appropriate for youngsters.

Near right: Cotton baby-doll dress, \$37. Far right: Skirt, \$36, leggings, \$24, and blouse, \$30. All by Bubala. Sizes 1-7. At Monkeys and Bears, 306 Amsterdam Avenue, Children's Club, Philadelphia. Hat: Lisa Shawb.

Far left, top: Kimono printed with dots and fish by Kyotoga, \$76. Sizes 4-6. At Just Kidding, 22 Harrison Street, Half-Pint, Sonoma, Calif. Peanut Butter Kids, Manhasset, L.I. Beret from Kyotoga. Shoes at Spring Flowers.

Near left, top: Cotton polo top from Gap Kids, \$22. Sizes S, M, L, XL. Graffiti print pant by Moschino Junior, \$82. Sizes 4-8. At Harlequin, Trump Tower, Belli Bambini, Los Angeles. Far left, below: Slicker by Wippette Kids, \$22. Sizes 2-4. Floral and dot print dress by Marybel, \$50. Sizes 2-4. Greenstones, 442 Columbus Avenue. Macaroni, Cleveland. Pitti Bimi, Deal, N.J. Coat: To order at Saks Fifth Avenue. Shoes at Shoofly. Hat: Elegant Cover. Laminated floral print coat and Mary Poppins dress by Mousefeathers, \$72. Sizes 4-6x. Coat, \$130. At Cerutti, 807 Madison Avenue. Apple Tree, Winnetka, Ill. Over the Moon, Upper Montclair, N.J. Shoes: Amiana. Near left, below: Vinyl motorcycle jacket by Wild One, \$86. Sizes 4-6. At Henri Bendel. Saks Fifth Avenue. Lester's, Brooklyn. Bike pant in cotton and Lycra by Chelsea Blake, \$24. Sizes 4-6x. Lester's, Brooklyn. Marcia's Attic, Fort Lee, N.J.

Near left, top: Cotton polo top from Gap Kids, \$22. Sizes S, M, L, XL. Graffiti print pant by Moschino Junior, \$82. Sizes 4-8. At Harlequin, Trump Tower, Belli Bambini, Los Angeles. Far left, below: Slicker by Wippette Kids, \$22. Sizes 2-4. Floral and dot print dress by Marybel, \$50. Sizes 2-4. Greenstones, 442 Columbus Avenue. Macaroni, Cleveland. Pitti Bimi, Deal, N.J. Coat: To order at Saks Fifth Avenue. Shoes at Shoofly. Hat: Elegant Cover. Laminated floral print coat and Mary Poppins dress by Mousefeathers, \$72. Sizes 4-6x. Coat, \$130. At Cerutti, 807 Madison Avenue. Apple Tree, Winnetka, Ill. Over the Moon, Upper Montclair, N.J. Shoes: Amiana. Near left, below: Vinyl motorcycle jacket by Wild One, \$86. Sizes 4-6. At Henri Bendel. Saks Fifth Avenue. Lester's, Brooklyn. Bike pant in cotton and Lycra by Chelsea Blake, \$24. Sizes 4-6x. Lester's, Brooklyn. Marcia's Attic, Fort Lee, N.J.

Near left, top: Cotton polo top from Gap Kids, \$22. Sizes S, M, L, XL. Graffiti print pant by Moschino Junior, \$82. Sizes 4-8. At Harlequin, Trump Tower, Belli Bambini, Los Angeles. Far left, below: Slicker by Wippette Kids, \$22. Sizes 2-4. Floral and dot print dress by Marybel, \$50. Sizes 2-4. Greenstones, 442 Columbus Avenue. Macaroni, Cleveland. Pitti Bimi, Deal, N.J. Coat: To order at Saks Fifth Avenue. Shoes at Shoofly. Hat: Elegant Cover. Laminated floral print coat and Mary Poppins dress by Mousefeathers, \$72. Sizes 4-6x. Coat, \$130. At Cerutti, 807 Madison Avenue. Apple Tree, Winnetka, Ill. Over the Moon, Upper Montclair, N.J. Shoes: Amiana. Near left, below: Vinyl motorcycle jacket by Wild One, \$86. Sizes 4-6. At Henri Bendel. Saks Fifth Avenue. Lester's, Brooklyn. Bike pant in cotton and Lycra by Chelsea Blake, \$24. Sizes 4-6x. Lester's, Brooklyn. Marcia's Attic, Fort Lee, N.J.

Near left, top: Cotton polo top from Gap Kids, \$22. Sizes S, M, L, XL. Graffiti print pant by Moschino Junior, \$82. Sizes 4-8. At Harlequin, Trump Tower, Belli Bambini, Los Angeles. Far left, below: Slicker by Wippette Kids, \$22. Sizes 2-4. Floral and dot print dress by Marybel, \$50. Sizes 2-4. Greenstones, 442 Columbus Avenue. Macaroni, Cleveland. Pitti Bimi, Deal, N.J. Coat: To order at Saks Fifth Avenue. Shoes at Shoofly. Hat: Elegant Cover. Laminated floral print coat and Mary Poppins dress by Mousefeathers, \$72. Sizes 4-6x. Coat, \$130. At Cerutti, 807 Madison Avenue. Apple Tree, Winnetka, Ill. Over the Moon, Upper Montclair, N.J. Shoes: Amiana. Near left, below: Vinyl motorcycle jacket by Wild One, \$86. Sizes 4-6. At Henri Bendel. Saks Fifth Avenue. Lester's, Brooklyn. Bike pant in cotton and Lycra by Chelsea Blake, \$24. Sizes 4-6x. Lester's, Brooklyn. Marcia's Attic, Fort Lee, N.J.

Near left, top: Cotton polo top from Gap Kids, \$22. Sizes S, M, L, XL. Graffiti print pant by Moschino Junior, \$82. Sizes 4-8. At Harlequin, Trump Tower, Belli Bambini, Los Angeles. Far left, below: Slicker by Wippette Kids, \$22. Sizes 2-4. Floral and dot print dress by Marybel, \$50. Sizes 2-4. Greenstones, 442 Columbus Avenue. Macaroni, Cleveland. Pitti Bimi, Deal, N.J. Coat: To order at Saks Fifth Avenue. Shoes at Shoofly. Hat: Elegant Cover. Laminated floral print coat and Mary Poppins dress by Mousefeathers, \$72. Sizes 4-6x. Coat, \$130. At Cerutti, 807 Madison Avenue. Apple Tree, Winnetka, Ill. Over the Moon, Upper Montclair, N.J. Shoes: Amiana. Near left, below: Vinyl motorcycle jacket by Wild One, \$86. Sizes 4-6. At Henri Bendel. Saks Fifth Avenue. Lester's, Brooklyn. Bike pant in cotton and Lycra by Chelsea Blake, \$24. Sizes 4-6x. Lester's, Brooklyn. Marcia's Attic, Fort Lee, N.J.

Near left, top: Cotton polo top from Gap Kids, \$22. Sizes S, M, L, XL. Graffiti print pant by Moschino Junior, \$82. Sizes 4-8. At Harlequin, Trump Tower, Belli Bambini, Los Angeles. Far left, below: Slicker by Wippette Kids, \$22. Sizes 2-4. Floral and dot print dress by Marybel, \$50. Sizes 2-4. Greenstones, 442 Columbus Avenue. Macaroni, Cleveland. Pitti Bimi, Deal, N.J. Coat: To order at Saks Fifth Avenue. Shoes at Shoofly. Hat: Elegant Cover. Laminated floral print coat and Mary Poppins dress by Mousefeathers, \$72. Sizes 4-6x. Coat, \$130. At Cerutti, 807 Madison Avenue. Apple Tree, Winnetka, Ill. Over the Moon, Upper Montclair, N.J. Shoes: Amiana. Near left, below: Vinyl motorcycle jacket by Wild One, \$86. Sizes 4-6. At Henri Bendel. Saks Fifth Avenue. Lester's, Brooklyn. Bike pant in cotton and Lycra by Chelsea Blake, \$24. Sizes 4-6x. Lester's, Brooklyn. Marcia's Attic, Fort Lee, N.J.

Near left, top: Cotton polo top from Gap Kids, \$22. Sizes S, M, L, XL. Graffiti print pant by Moschino Junior, \$82. Sizes 4-8. At Harlequin, Trump Tower, Belli Bambini, Los Angeles. Far left, below: Slicker by Wippette Kids, \$22. Sizes 2-4. Floral and dot print dress by Marybel, \$50. Sizes 2-4. Greenstones, 442 Columbus Avenue. Macaroni, Cleveland. Pitti Bimi, Deal, N.J. Coat: To order at Saks Fifth Avenue. Shoes at Shoofly. Hat: Elegant Cover. Laminated floral print coat and Mary Poppins dress by Mousefeathers, \$72. Sizes 4-6x. Coat, \$130. At Cerutti, 807 Madison Avenue. Apple Tree, Winnetka, Ill. Over the Moon, Upper Montclair, N.J. Shoes: Amiana. Near left, below: Vinyl motorcycle jacket by Wild One, \$86. Sizes 4-6. At Henri Bendel. Saks Fifth Avenue. Lester's, Brooklyn. Bike pant in cotton and Lycra by Chelsea Blake, \$24. Sizes 4-6x. Lester's, Brooklyn. Marcia's Attic, Fort Lee, N.J.

Near left, top: Cotton polo top from Gap Kids, \$22. Sizes S, M, L, XL. Graffiti print pant by Moschino Junior, \$82. Sizes 4-8. At Harlequin, Trump Tower, Belli Bambini, Los Angeles. Far left, below: Slicker by Wippette Kids, \$22. Sizes 2-4. Floral and dot print dress by Marybel, \$50. Sizes 2-4. Greenstones, 442 Columbus Avenue. Macaroni, Cleveland. Pitti Bimi, Deal, N.J. Coat: To order at Saks Fifth Avenue. Shoes at Shoofly. Hat: Elegant Cover. Laminated floral print coat and Mary Poppins dress by Mousefeathers, \$72. Sizes 4-6x. Coat, \$130. At Cerutti, 807 Madison Avenue. Apple Tree, Winnetka, Ill. Over the Moon, Upper Montclair, N.J. Shoes: Amiana. Near left, below: Vinyl motorcycle jacket by Wild One, \$86. Sizes 4-6. At Henri Bendel. Saks Fifth Avenue. Lester's, Brooklyn. Bike pant in cotton and Lycra by Chelsea Blake, \$24. Sizes 4-6x. Lester's, Brooklyn. Marcia's Attic, Fort Lee, N.J.

PHOTOGRAPHS BY TIMOTHY GREENFIELD SANDERS FOR THE NEW YORK TIMES

HAIR AND MAKEUP: SANDRINE VAN SLEE FOR PIERRE MOUËL; STYLING: ANNE CAMPET; HAIR: USA VAMONDE; MAKEUP: SANDRINE VAN SLEE FOR PIERRE MOUËL; STUDIO: POLAROID 2024

## Sandrine Van Slee

www.art-dept.com



# Art Department



STYLIST: LISA VANMOERDE HAIR AND MAKEUP: SANDRINE VAN SLEE FOR PIERRE MOUËL STUDIO POLAROID 2024

*Above: Top by Big Enough, \$42. Sizes 2-9. Shorts by Moschino Junior, \$82. Sizes 4-8. Top at Henri Bendel. Shorts at Harlequin, Trump Tower. Below: Cardigan by Bubala, \$19. Sizes 1-7. Pants, \$33, and shirt, \$34, by Malina. Sizes 2-10. At Kids, Kids, Kids, 44 Greenwich Avenue. Shoes: Amlana.*



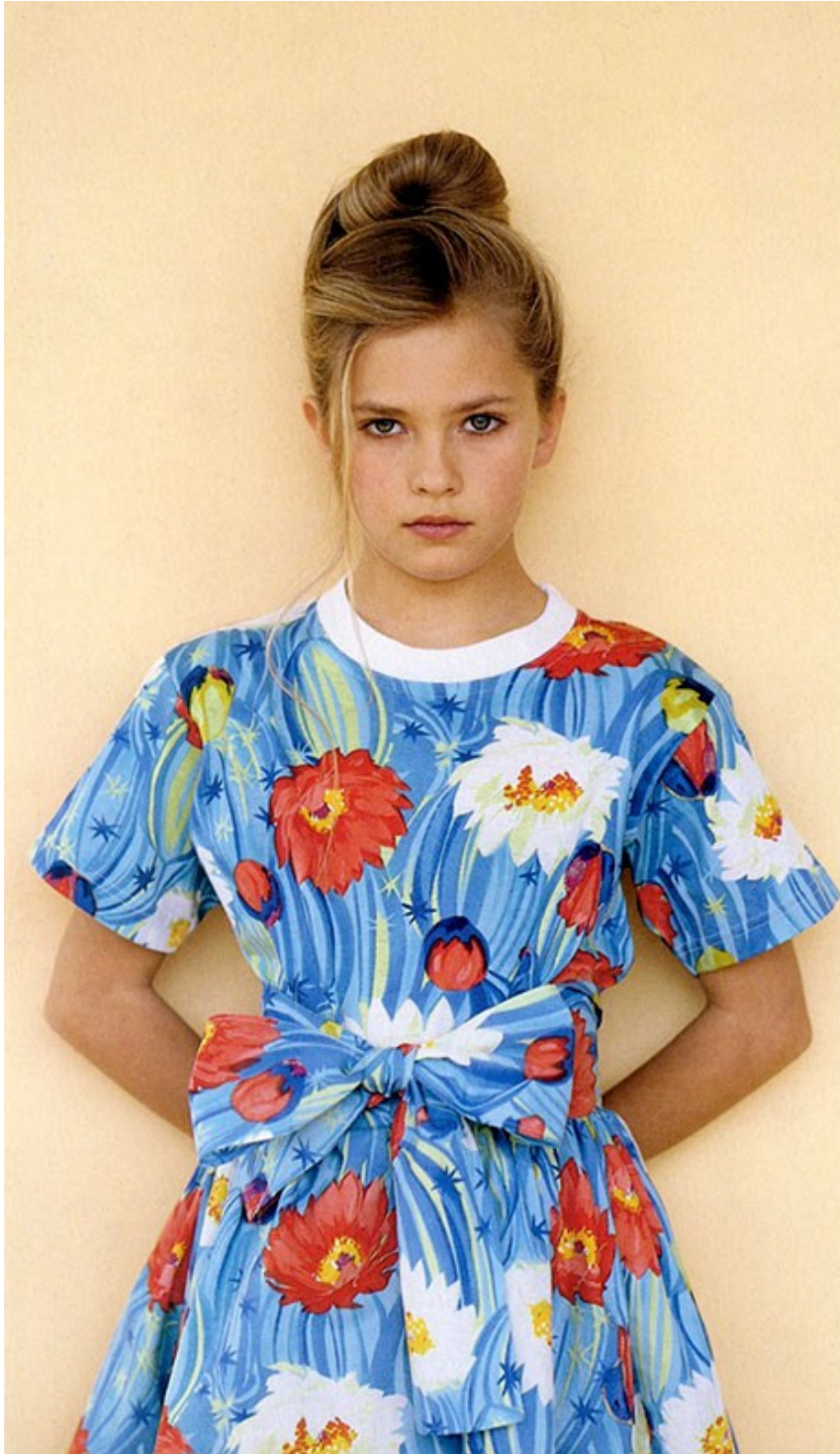
CHAIR BY LAURA SHAPIRO FOR MYTHOLOGY

PHOTOGRAPHS BY TIMOTHY GREENFIELD SANDERS FOR THE NEW YORK TIMES

## Sandrine Van Slee

[www.art-dept.com](http://www.art-dept.com)

# Art Department



Prodotto e distribuito da:  
ITALIANGRIFFE Srl  
- Contrada S. Elena - Ortona (Chieti)  
Tel. 085/9061762 - Fax 085/9062235

## Sandrine Van Slee

[www.art-dept.com](http://www.art-dept.com)



# Art Department



FOTO FLAVIO BONETTI

Sandrine Van Slee

[www.art-dept.com](http://www.art-dept.com)

# Art Department



DRAUSSEN IST ES  
KALT, DOCH IN  
DER MODE WIRD  
JETZT SCHON DIE  
SOMMERSAISON  
2012 ERÖFFNET.  
DAS SIND DIE  
WICHTIGSTEN  
ACHT TRENDS FÜR  
DIE ZEIT, WENN  
ES WARM WIRD



Fotos  
JAMES  
MACARI

DIE

M  
U  
S  
T  
E  
R  
M  
Ä  
N  
N  
E  
R

Produktion  
EVELYN SAND

## Sandrine Van Slee

[www.art-dept.com](http://www.art-dept.com)



# Art Department



Sandrine Van Slee

[www.art-dept.com](http://www.art-dept.com)

# Art Department



Février 2012 - GQ DE 133

Sandrine Van Slee

[www.art-dept.com](http://www.art-dept.com)



# Art Department

**TREND**

**KURZARMHEMDEN**

Ärmel hochkrempeln? Nö. Nächsten Sommer sind sie eh schon kurz genug. Der Look ist den ewig wilden 60er-Jahren entlehnt, und die schönsten Stücke der Saison kommen mit Hawaii- oder Ethnoprints

➤ Vordruck: Hemd, **KENZO**, 195 Euro. T-Shirt, **SCHNEIDER**, 45 Euro. Jeans, **LEE**, 100 Euro. ➤ Seidenhemd, **PRADA**, 400 Euro. Denimshorts, **CAMEL ACTIVE**, 70 Euro. Boxershorts, **GALVIN KLEIN UNDERWEAR**, 25 Euro. ➤ Hemd, **WOOLRICH WOOLEN MILLS**, 175 Euro. Jeans, **REPLAY**, 170 Euro. ➤ Hemd, **BURBERRY PHOENIXUM**, 275 Euro. Jeans, **PEPE JEANS**, 130 Euro. Armband, **THOMAS SABO**, 200 Euro. ➤ Hemd, **PEPE JEANS**, 70 Euro. Jeans, **MASTIG REPLAY**, 230 Euro.

134 GQ.DE | Februar 2013

## Sandrine Van Slee

[www.art-dept.com](http://www.art-dept.com)

# Art Department

STYLE / Die Mustermänner



GEDECKTE  
FARBEN

\*\*\*\*\*  
Dunkelgrün,  
Grau, Petrol,  
Weinrot sind die  
Farben der Saison.  
Hipster, die im nächsten  
Sommer auch  
noch hip sein  
möchten, verpassen  
den Preppy-  
und Pastellfarben  
der jüngsten  
Zeit deshalb  
eine Auszeit im  
Schrank

\*\*\*\*\*  
▶ Anzug, **BOSS BLACK**, 450 Euro  
Hemd, **ODS**, 80 Euro  
▶ Anzug, **GIVENCHY  
BY RICCARDO TISCI**,  
2300 Euro, Hemd,  
**PIOMBO**, 170 Euro,  
Baseballmütze, **NEW  
ERA**, 40 Euro  
▶ Anzug, **ODS**, 245 Euro  
Hemd, **PATRIK ERVELL**,  
520 Euro  
▶ Sakko **ACHE**,  
480 Euro, Hose, **PIOM-  
BO**, 120 Euro, Hemd,  
**BOTTIGA VENEZIA**,  
750 Euro  
▶ Anzug, 1010 Euro, und  
Hemd, 350 Euro, oder die  
**LANVIN** Strickjacke,  
**WINDSOR**, 80 Euro

138 GQ DE - Februar 2012

## Sandrine Van Slee

[www.art-dept.com](http://www.art-dept.com)



# Art Department



Sandrine Van Slee

[www.art-dept.com](http://www.art-dept.com)

# Art Department



Sandrine Van Slee

[www.art-dept.com](http://www.art-dept.com)



# Art Department



Sandrine Van Slee

[www.art-dept.com](http://www.art-dept.com)

# Art Department



CÉSAR VEGA  
*Coffee Entrepreneur*

Sandrine Van Slee

[www.art-dept.com](http://www.art-dept.com)



# Art Department



GOOD  
TIDINGS

COLEHAAN

GREAT  
SAVINGS  
TO ALL

50-70% OFF  
ENTIRE  
SELECTION\*

*\*Suggested Retail Prices at  
Cole Haan Outlet Stores*

Sandrine Van Slee

[www.art-dept.com](http://www.art-dept.com)

# Art Department



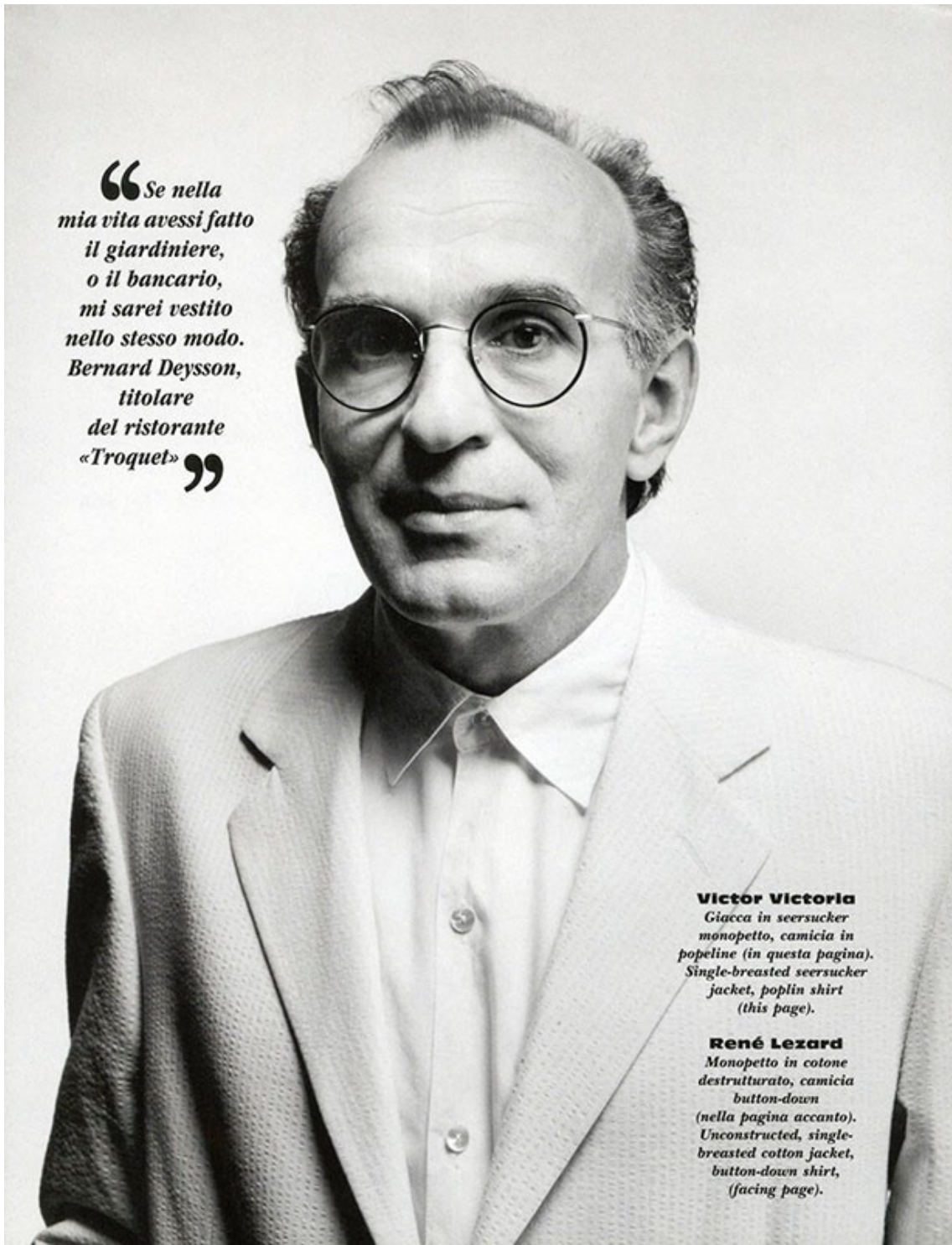
Sandrine Van Slee

[www.art-dept.com](http://www.art-dept.com)



# Art Department

“*Se nella mia vita avessi fatto il giardiniere, o il bancario, mi sarei vestito nello stesso modo.*  
**Bernard Deysson,**  
*titolare del ristorante «Troquet»*”



**Victor Victoria**  
*Giacca in seersucker monopetto, camicia in popeline (in questa pagina).  
Single-breasted seersucker jacket, poplin shirt (this page).*

**René Lezard**  
*Monopetto in cotone destrutturato, camicia button-down (nella pagina accanto).  
Unconstructed, single-breasted cotton jacket, button-down shirt, (facing page).*

Sandrine Van Slee

# Art Department



**“***Mi piace il rock. I miei coetanei preferiscono la T-shirt, ma io, in omaggio a Jimi Hendrix, scelgo la camicia.*  
*Kalkin Narvias,*  
*studente di Conservatorio***”**

#### **Industria**

*Camicia in popeline di cotone sovratinto con bottoni in metallo (nella pagina accanto).*

*Overprint cotton poplin shirt with metal buttons (facing page).*

*Casacca in cotone con collo a camicia (in questa pagina).*

*Cotton smock with shirt collar (this page).*

*Fashion editor, Susan Winget.*

**Foto Fabrizio Ferri**

## Sandrine Van Slee



# Art Department



FABRIZIO FERRI

“La verità? Mi sento romantico fin nel midollo. Mi piacciono le camicie ampie, un po' bobémien. Trovo che mi somiglino. Eric Henri Aiperin, studente di recitazione”

## **Industria**

Camicia in lino effetto canovaccio (nella pagina accanto). Pantaloni militari, Diesel; cappello, Borsalino. Shirt in coarse effect linen (facing page). Military-style trousers, Diesel; hat, Borsalino. Camicia oversize in cotone e viscosa (in questa pagina). Oversize cotton and viscose shirt (this page).

## Sandrine Van Slee

[www.art-dept.com](http://www.art-dept.com)

# Art Department



Sandrine Van Slee

[www.art-dept.com](http://www.art-dept.com)



# Art Department



164 00 НОЯБРЬ 2014

КОЖАНАЯ КУРТКА, СУИСС;  
ТОПСТВОВКА ИЗ ХЛОПКА,  
ТРИКОТАЖНЫЕ БРЮКИ, ВСЁ  
ICEBERG; КОЖАНЫЕ ПЕРЧАТКИ,  
ERMEGENILDO ZEGNA.

## Sandrine Van Slee

[www.art-dept.com](http://www.art-dept.com)

# Art Department



Sandrine Van Slee

[www.art-dept.com](http://www.art-dept.com)



# Art Department



Sandrine Van Slee

[www.art-dept.com](http://www.art-dept.com)

# Art Department

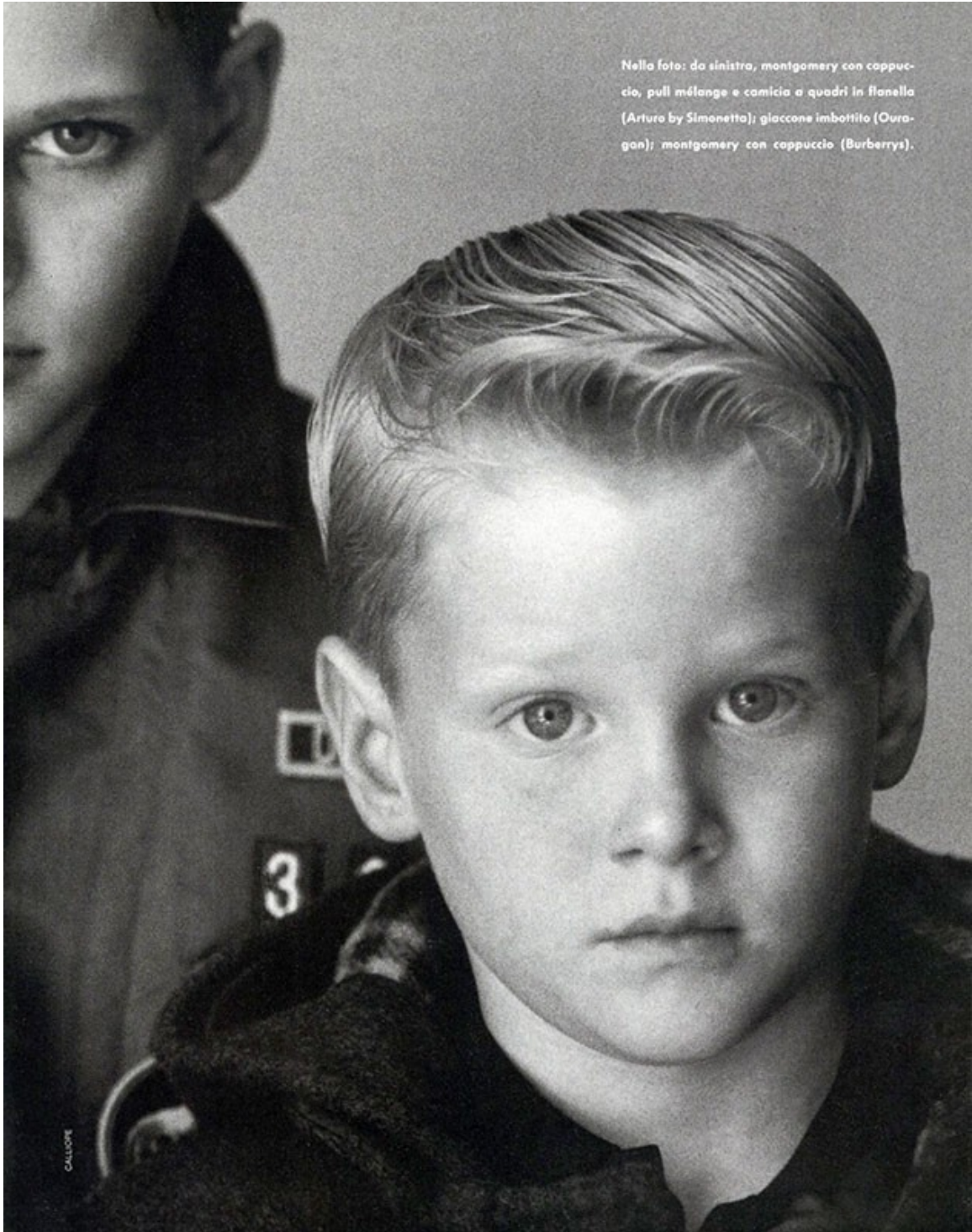


Sandrine Van Slee

[www.art-dept.com](http://www.art-dept.com)



# Art Department



Nella foto: da sinistra, montgomery con cappuccio, pull mélangé e camicia e quadri in flanella (Arturo by Simonetta); giaccone imbottito (Ouragan); montgomery con cappuccio (Burberrys).

CALLIGRAPH

## Sandrine Van Slee

[www.art-dept.com](http://www.art-dept.com)

# Art Department

In questa pagina: cardigan in felpa di **Essegi**; camicia fantasia (**Ouragan**). Nella pagina accanto: montgomery scozzese e gonna a ruota in velluto liscio di **Imelde & Stefano Cavalleri**; **I Pinco Pallino**, cardigan in felpa (**Bill e Teddy Milton**); calze (**Malerba**); scarponcini (**Sultanino Sprint**).



Sandrine Van Slee

[www.art-dept.com](http://www.art-dept.com)



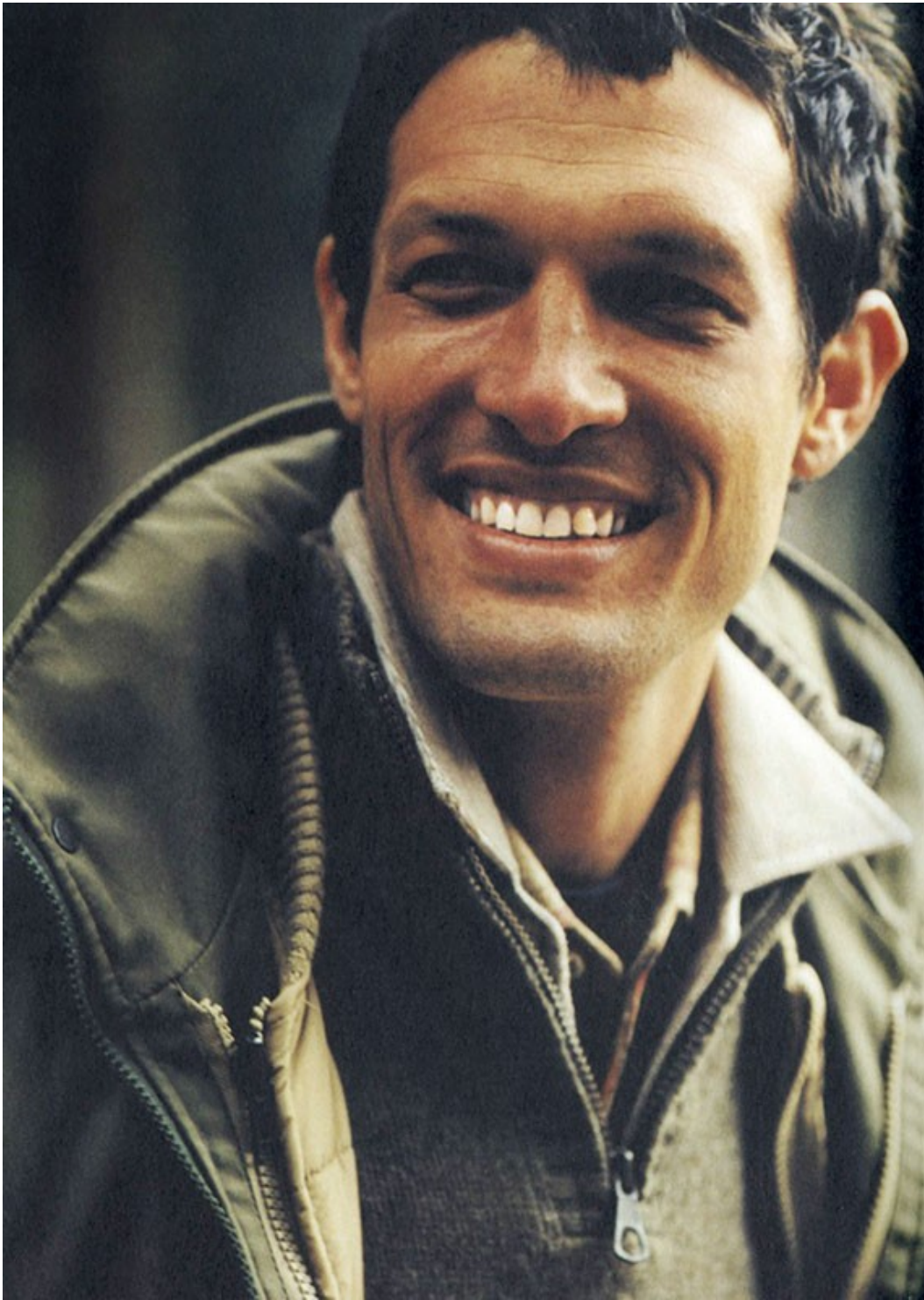
# Art Department



Sandrine Van Slee

[www.art-dept.com](http://www.art-dept.com)

# Art Department



Sandrine Van Slee

[www.art-dept.com](http://www.art-dept.com)



# Art Department



Sandrine Van Slee

[www.art-dept.com](http://www.art-dept.com)

# Art Department



Sandrine Van Slee

[www.art-dept.com](http://www.art-dept.com)



# Art Department



Sandrine Van Slee

[www.art-dept.com](http://www.art-dept.com)



# Art Department



Sandrine Van Slee

[www.art-dept.com](http://www.art-dept.com)



# Art Department



Sandrine Van Slee

[www.art-dept.com](http://www.art-dept.com)

# Art Department



Sandrine Van Slee

[www.art-dept.com](http://www.art-dept.com)



# Art Department



Sandrine Van Slee

[www.art-dept.com](http://www.art-dept.com)

# Art Department



Sandrine Van Slee

[www.art-dept.com](http://www.art-dept.com)



# Art Department



Sandrine Van Slee

[www.art-dept.com](http://www.art-dept.com)

# Art Department

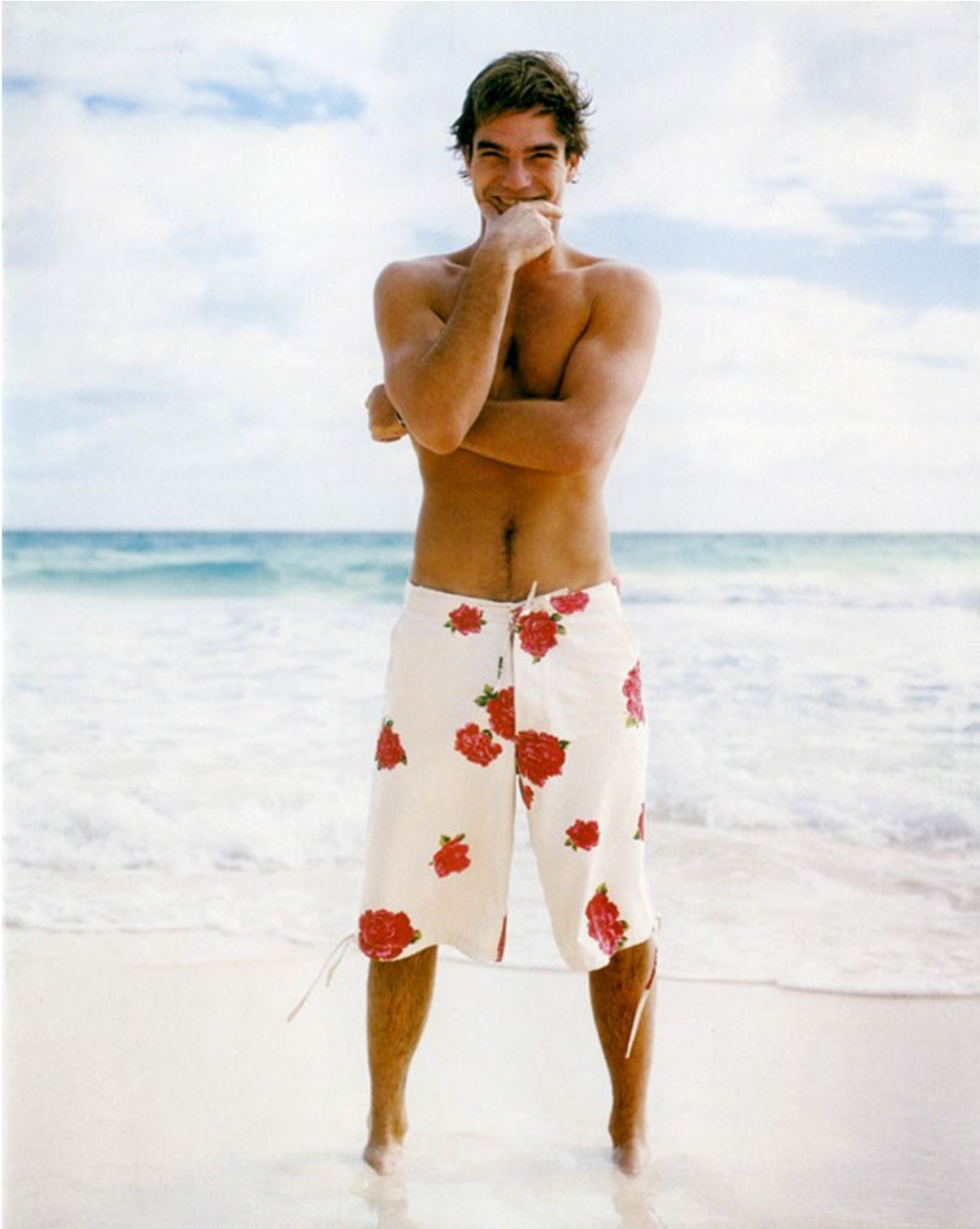


Sandrine Van Slee

[www.art-dept.com](http://www.art-dept.com)



# Art Department



Sandrine Van Slee

[www.art-dept.com](http://www.art-dept.com)

# Art Department



Sandrine Van Slee

[www.art-dept.com](http://www.art-dept.com)



# Art Department



Sandrine Van Slee

[www.art-dept.com](http://www.art-dept.com)

# Art Department

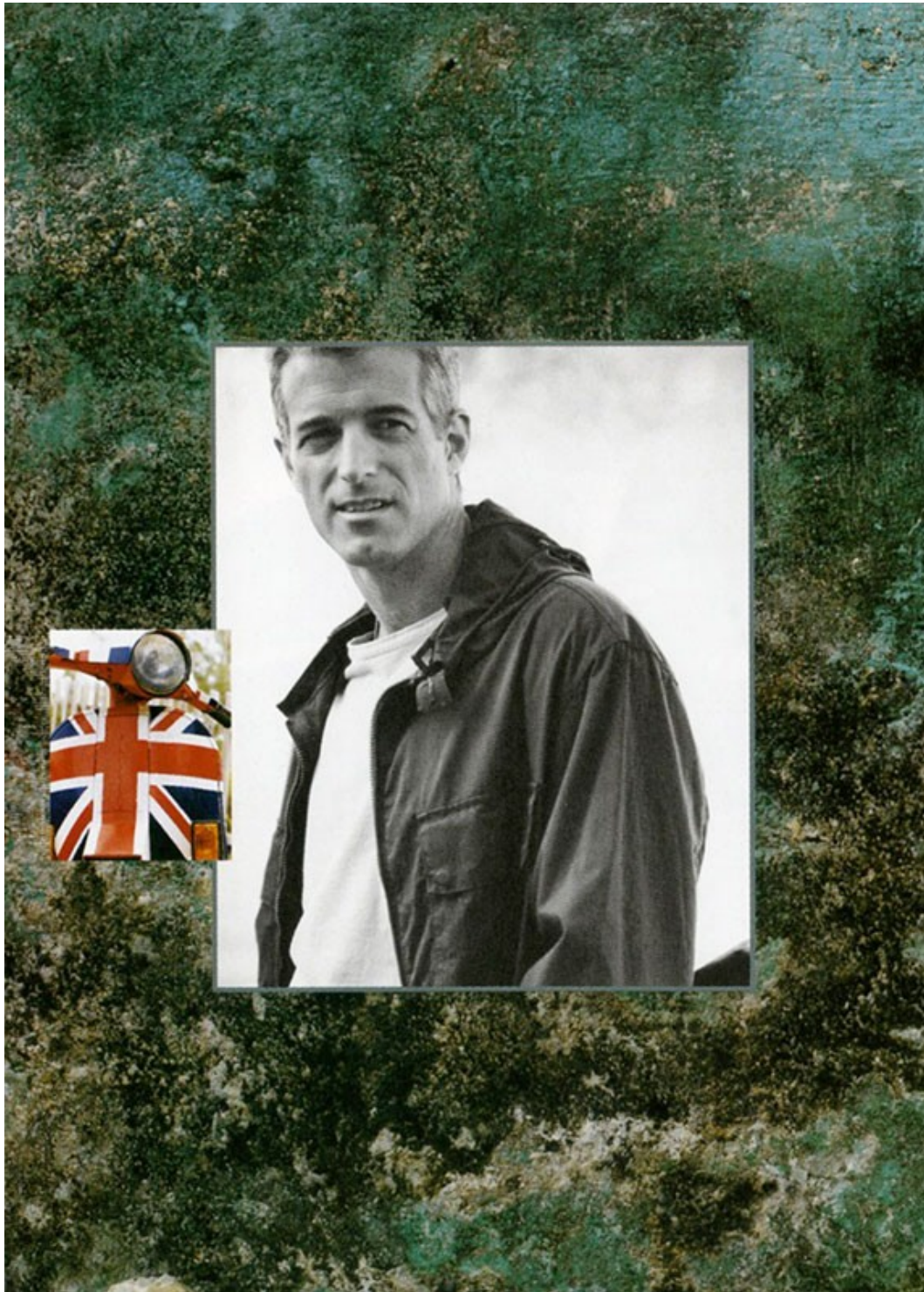


Sandrine Van Slee

[www.art-dept.com](http://www.art-dept.com)



# Art Department



Sandrine Van Slee

[www.art-dept.com](http://www.art-dept.com)

# Art Department



Sandrine Van Slee

[www.art-dept.com](http://www.art-dept.com)



# Art Department



Sandrine Van Slee

[www.art-dept.com](http://www.art-dept.com)

# Art Department



Sandrine Van Slee

[www.art-dept.com](http://www.art-dept.com)



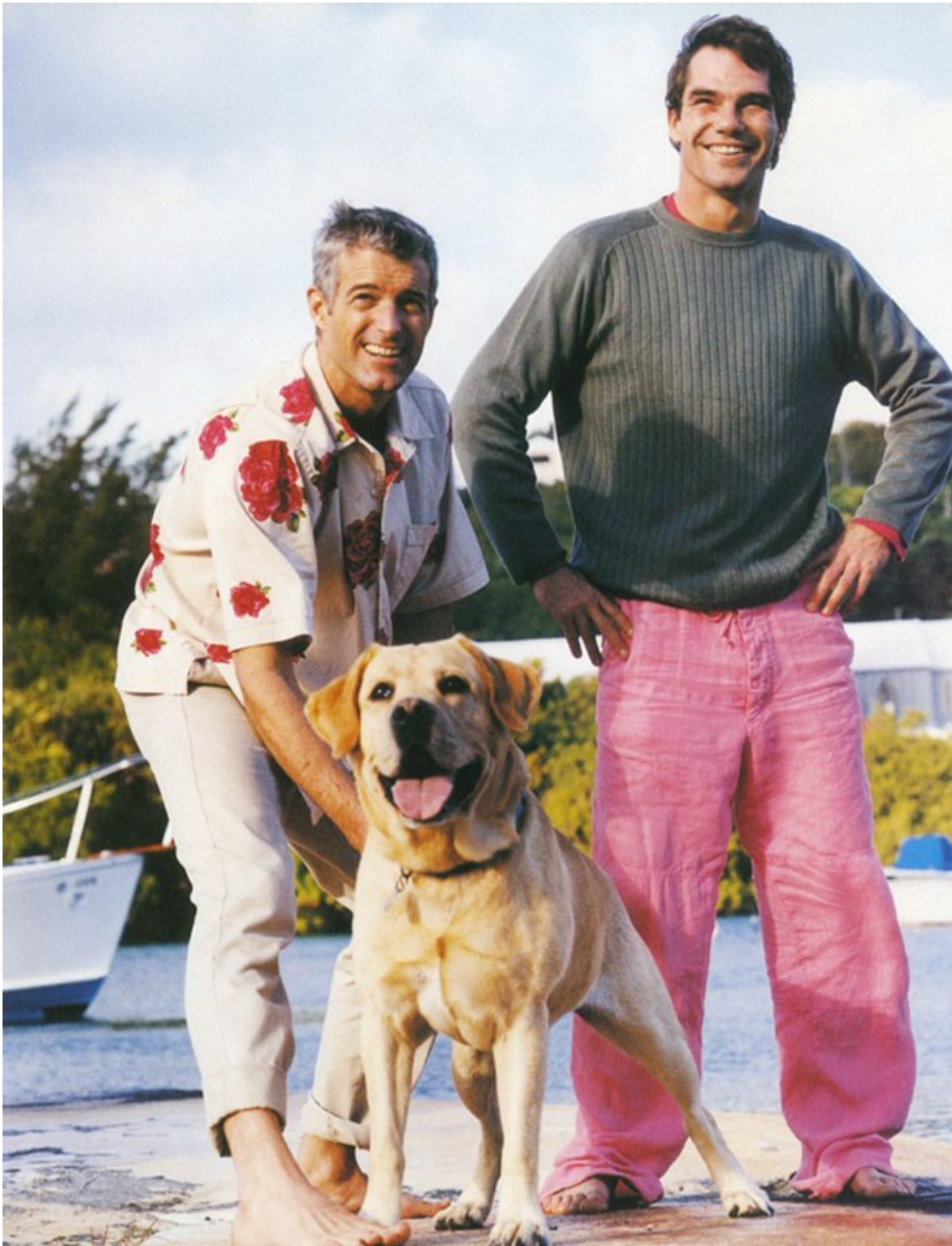
# Art Department



Sandrine Van Slee

[www.art-dept.com](http://www.art-dept.com)

# Art Department



Sandrine Van Slee

[www.art-dept.com](http://www.art-dept.com)



# Art Department



Sandrine Van Slee

[www.art-dept.com](http://www.art-dept.com)

# Art Department



Sandrine Van Slee

[www.art-dept.com](http://www.art-dept.com)



# Art Department



Sandrine Van Slee

[www.art-dept.com](http://www.art-dept.com)

# Art Department



Sandrine Van Slee

[www.art-dept.com](http://www.art-dept.com)