

Art Department



Samantha Fryling

www.art-dept.com

Art Department



Samantha Fryling

www.art-dept.com

Art Department



Samantha Fryling

Art Department



Samantha Fryling

www.art-dept.com

Art Department



Samantha Fryling

Art Department



Samantha Fryling

www.art-dept.com

Art Department



Samantha Fryling

www.art-dept.com

Art Department



Samantha Fryling

www.art-dept.com

Art Department



Samantha Fryling

www.art-dept.com

Art Department



Samantha Fryling

www.art-dept.com

Art Department



Samantha Fryling

www.art-dept.com

Art Department



Samantha Fryling

www.art-dept.com

Art Department



Samantha Fryling

www.art-dept.com

Art Department



Samantha Fryling

www.art-dept.com

Art Department



Samantha Fryling

www.art-dept.com

Art Department



Samantha Fryling

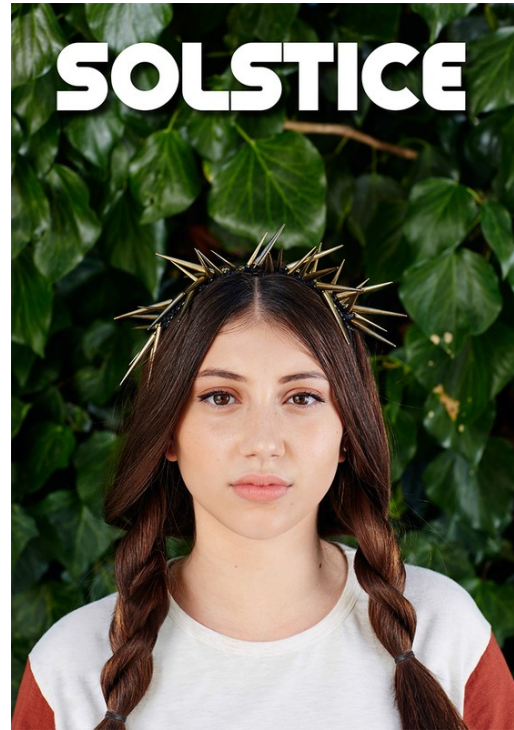
www.art-dept.com

Art Department



Samantha Fryling

Art Department



Samantha Fryling

Art Department



Samantha Fryling

www.art-dept.com

Art Department



Samantha Fryling

www.art-dept.com

Art Department



Samantha Fryling

www.art-dept.com

Art Department



Samantha Fryling

www.art-dept.com

Art Department

Hollywood OASIS

Photography Sara Pine
Style Veronica Alvericci
Beauty Samantha Fryling for
Art-Dept.com



Pippa in Stella Cove Colorful
Swimsuit Milk N Soda Jardin
Gold Sunglasses Milson Kids
ZigZag Headband

19 / MINI-MAVEN.COM

MINI-MAVEN.COM

Ultra Violet Kids Taffy Peasant Dress
Bianca Makris Kids Yellow Big Bead Necklace
Steve Madden Kids WrkWrk Sandal



MINI-MAVEN.COM



The Animals Observatory Parakeet
Dot Shirt & Kiwi Santa Maria Skirt
from Shan & Toad Milk N Soda
Stripe Stretch Headband
Maison Margotana Guajava Sandals

Samantha Fryling

www.art-dept.com

Art Department



Zoey in
The Animals Observatory
Parakeet Shirt
Once Cropped Tie Top
Milk and Biscuits Striped
Culottes all from Shan & Toad
Milk N Soda Cherry Earrings
Paquelette Paris Anna
Sunglasses from
Mine Mine Kids

Ultra Violet Kids Circus
Jumper Milk N Soda Georgie
Visor Cap H&M Mesh Socks
Maison Mangostan Coco
Plum Sandals



Airfish Lola Top
and Oslo Skirt
Maison Mangostan
Guajava Sandals

MINE-MAVEN.COM



Tarabini Tagia Kimono
Tuchinda Svea Jumpsuit
Maison Mangostan Coco
Plum Silver Sandals
Amour Bows Rocks
Headband

Samantha Fryling

www.art-dept.com

Art Department



Madison in *Tutu Du Monde*
 Flamenco Cape *Tuchinda*
 Louis Chinese Swan Top
Lulaland Frances Skirt
We Love Colors Solid
 Color Nylon Socks *Acid*
 Aston Blush Sandal

Lulaland Edie Top
Tutu Du Monde Tulip
 Showstopper shorts
Missoni Kids Bandana
Sons and Daughters
 Honey sunglasses



The Animals Observatory
 Santa Maria T-Shirt and Raw
 White Fruit Pants from *Shan & Toad*
We Love Colors Solid Color Nylon Socks
 Ultra Violet Kids Fruit Stripe Turban



Tago Splash Poncho
 Mandy Tangerine
 Mini Cashmere
 Top Knot Turban

MIMI-MAVEN.COM

Samantha Fryling

www.art-dept.com

Art Department



Samantha Fryling

www.art-dept.com

Art Department



Samantha Fryling

www.art-dept.com

Art Department



Samantha Fryling

www.art-dept.com

Art Department



Samantha Fryling

www.art-dept.com

Art Department



Samantha Fryling

www.art-dept.com

Art Department



Samantha Fryling

www.art-dept.com

Art Department



Samantha Fryling

www.art-dept.com

Art Department

laylu
-DIY

PHOTOGRAPHER: SARA PINE
WARDROBE: JESSIE JAMZ
WARDROBE ASST: JAVON RHONE
HAIR & MAKEUP: SAMANTHA FRYLING / ART DEPARTMENT
GRAPHICS & ART DIRECTION: JOEL T. GEIST
MODELS: LAYLU
PRODUCTION: PRODUCTION ON 5TH



Photo: Sara Pine
Dress: ZIZZAR
Shoes: Nike

26



Shirt: ZIZZAR
Overalls: Wet Seal
Jacket: C.T.
Shoes: Modells Own
Shoes: Wet Seal



Shirt: I Dig Design
Jumpsuit: Charles & Ray
Hat: Kristina (Designed by Marnoldi)
Beret (on hat): Annar Berns

Samantha Fryling

www.art-dept.com

Art Department



Samantha Fryling

Art Department



Shirt: JIZZAR
Pants: JIZZAR
Shoes: Nike
Earrings: Madeline Stone
Ring: Topshop

37



T H E A G E O F Y O U T H
BY SARA PINE

Samantha Fryling

www.art-dept.com

Art Department



Samantha Fryling

www.art-dept.com

Art Department



Samantha Fryling

www.art-dept.com

Art Department



PHOTOGRAPHER SARA PINE
WARDROBE SARAH LOWE AND SUNSHINE MADSEN
HAIR AND MAKE UP SAMANTHA FRYLING
ART DIRECTION JOEL GEIST
MODEL MAYA J
PRODUCTION ON 5TH

Samantha Fryling

www.art-dept.com

Art Department



Samantha Fryling

www.art-dept.com

Art Department



Samantha Fryling

www.art-dept.com

Art Department



Samantha Fryling

www.art-dept.com

Art Department



Samantha Fryling

www.art-dept.com

Art Department



Samantha Fryling

Art Department



Samantha Fryling

www.art-dept.com

Art Department



Samantha Fryling

www.art-dept.com

Art Department



Samantha Fryling

www.art-dept.com

Art Department



Samantha Fryling

www.art-dept.com