

Art Department



Samantha Fryling

www.art-dept.com

Art Department



Samantha Fryling

www.art-dept.com

Art Department



Samantha Fryling

www.art-dept.com

Art Department



Samantha Fryling

www.art-dept.com

Art Department



Samantha Fryling

www.art-dept.com

Art Department



Samantha Fryling

www.art-dept.com

Art Department



Samantha Fryling

www.art-dept.com

Art Department



Samantha Fryling

www.art-dept.com

Art Department



Samantha Fryling

www.art-dept.com

Art Department



Samantha Fryling

www.art-dept.com

Art Department



Samantha Fryling

www.art-dept.com

Art Department



Samantha Fryling

www.art-dept.com

Art Department



Samantha Fryling

www.art-dept.com

Art Department



Samantha Fryling

www.art-dept.com

Art Department



Samantha Fryling

www.art-dept.com

Art Department



Samantha Fryling

www.art-dept.com

Art Department



Samantha Fryling

www.art-dept.com

Art Department



Samantha Fryling

www.art-dept.com

Art Department



Samantha Fryling

www.art-dept.com

Art Department



Tee / Molo
Top / Mini Rodini
Pants / Name It
Hat / Tucker + Tate
Shoes / Converse

THE
FUTURE
LOOKS
BRIGHT

Photography / Elke Van de Velde
Wardrobe Styling / Stacy Zimmerman @ JK Artists
Hair & Make Up / Samantha Fryling @ Art Dep
Models / Alexa & Sadie @ Zuri
Art Direction / Irina Scott

Samantha Fryling

www.art-dept.com

Art Department



Samantha Fryling

www.art-dept.com

Art Department



Sweatshirt / Zara Kids
Skirt / Zara Kids
Shoes / Vans

Samantha Fryling

www.art-dept.com

Art Department



Samantha Fryling

www.art-dept.com

Art Department



Samantha Fryling

www.art-dept.com

Art Department



Dress / Mini Boden
Shoes / Converse
PomPom / Crewcuts

Samantha Fryling

www.art-dept.com

Art Department



Samantha Fryling

www.art-dept.com

Art Department



Samantha Fryling

www.art-dept.com

Art Department



Samantha Fryling

www.art-dept.com

Art Department



Samantha Fryling

www.art-dept.com

Art Department



Samantha Fryling

www.art-dept.com

Art Department



Samantha Fryling

www.art-dept.com

Art Department



Samantha Fryling

www.art-dept.com

Art Department



Samantha Fryling

www.art-dept.com

Art Department



Samantha Fryling

www.art-dept.com

Art Department



Samantha Fryling

www.art-dept.com

Art Department



Samantha Fryling

www.art-dept.com

Art Department



Samantha Fryling

www.art-dept.com

Art Department



Samantha Fryling

www.art-dept.com

Art Department



Samantha Fryling

www.art-dept.com

Art Department



Samantha Fryling

www.art-dept.com

Art Department



Samantha Fryling

www.art-dept.com

Art Department



Samantha Fryling

www.art-dept.com

Art Department



Samantha Fryling

Art Department



Samantha Fryling

www.art-dept.com

Art Department



Samantha Fryling

www.art-dept.com

Art Department



Samantha Fryling

www.art-dept.com

Art Department



Samantha Fryling

www.art-dept.com

Art Department



Samantha Fryling

www.art-dept.com

Art Department



Samantha Fryling

www.art-dept.com

Art Department



Samantha Fryling

www.art-dept.com

Art Department



Samantha Fryling

www.art-dept.com

Art Department



Samantha Fryling

Art Department



Samantha Fryling

www.art-dept.com

Art Department



Samantha Fryling

www.art-dept.com

Art Department

TOP: BRANDY MELVILLE
SHORTS: ZARA
SOCKS: PAIR OF THIEVES
SHOES: VINCE
GLASSES: URBAN OUTFITTERS
SCARF: STYLISTS OWN
SUSPENDERS: VINTAGE



Samantha Fryling

www.art-dept.com

Art Department



Samantha Fryling

www.art-dept.com

Art Department



Samantha Fryling

www.art-dept.com

Art Department



Samantha Fryling

www.art-dept.com

Art Department



Samantha Fryling

www.art-dept.com

Art Department



Samantha Fryling

www.art-dept.com

Art Department



Samantha Fryling

www.art-dept.com

Art Department



Samantha Fryling

www.art-dept.com

Art Department

MINI MAVEN
FOR THE STYLISH CHILD

The *Escape* Issue

HOLLYWOOD OASIS
A LA PLAGER
SWIM STAR
FAIRYTALE MUSE

MOQUE
AMIAH MILLER
AIRFISH
HAUS OF JR
BONBON PARIS

Spring/Summer 2017
MiniMavenMagazine.com
0 74470 29749 9
\$19.50

Color... Lots of it!

Samantha Fryling

www.art-dept.com

Art Department

Hollywood OASIS

Photography Sara Pine
Style Veronica Alvericci
Beauty Samantha Fryling for
Art-Dept.com



Pippa in Stella Cove Colorful
Swimsuit Milk N Soda Jardin
Gold Sunglasses Missoni Kids
ZigZag Headband

Samantha Fryling

www.art-dept.com

Art Department

Ultra Violet Kids Taffy Peasant Dress
Bianca Makris Kids Yellow Big Bead Necklace
Steve Madden Kids WrkWrk Sandal



MINI-MAVEN.COM



The Animals Observatory Parakeet
Dot Shirt & Kiwi Santa Maria Skirt
from Shan & Toad Milk N Soda
Stripe Stretch Headband
Maison Mangostan Guajava Sandals

Samantha Fryling

www.art-dept.com

Art Department



Samantha Fryling

www.art-dept.com

Art Department



Airfish Lola Top
and Oslo Skirt
Maison Mangostan
Guajava Sandals

MINI-MAVEN.COM



Tarabini Tagia Kimono
Tuchinda Svea Jumpsuit
Maison Mangostan Coco
Plum Silver Sandals
Amour Bows Rocks
Headband

Samantha Fryling

www.art-dept.com

Art Department



Samantha Fryling

www.art-dept.com

Art Department



The Animals Observatory
Santa Maria T-Shirt and Raw
White Fruit Pants from **Shan & Toad**
We Love Colors Solid Color Nylon Socks
Ultra Violet Kids Fruit Stripe Turban



Tago Splash Poncho
Mandy Tangerine
Mini Cashmere
Top Knot Turban

MINI-MAVEN.COM

Samantha Fryling

www.art-dept.com

Art Department



Samantha Fryling

www.art-dept.com

Art Department



Samantha Fryling

www.art-dept.com

Art Department



Samantha Fryling

www.art-dept.com

Art Department



Samantha Fryling

www.art-dept.com

Art Department



Samantha Fryling

www.art-dept.com

Art Department



Samantha Fryling

www.art-dept.com

Art Department



Samantha Fryling

www.art-dept.com

Art Department



Samantha Fryling

www.art-dept.com

Art Department



Samantha Fryling

www.art-dept.com

Art Department



Samantha Fryling

www.art-dept.com

Art Department



Mara wears **GUESS**
Denim shirt **BONPOINT**
Jumpsuit
7 FOR ALL MANKIND
Boyfriend chambray shirt
PAIR OF THIEVES
Cool Hand Luke Socks
KENNETH COLE Shoes

Samantha Fryling

www.art-dept.com

Art Department



Samantha Fryling

www.art-dept.com

Art Department



Samantha Fryling

www.art-dept.com

Art Department



Samantha Fryling

www.art-dept.com

Art Department



Samantha Fryling

www.art-dept.com

Art Department



Samantha Fryling

www.art-dept.com

Art Department

laylu
-DIY

PHOTOGRAPHER: SARA PINE
WARDROBE: JESSIE JAMZ
WARDROBE ASST: JAVON RHONE
HAIR & MAKEUP: SAMANTHA FRYLING / ART DEPARTMENT
GRAPHICS & ART DIRECTION: JOEL T. GEIST
MODELS: LAYLU
PRODUCTION: PRODUCTION ON 5TH



Pants: Pac Sun
Dress: ZIZTAR
Shoes: Nivesta

Samantha Fryling

Art Department



Shirt: ZIZTAR
Overalls: Wet Seal
Jacket: OTT
Socks: Models Own
Shoes: Wet Seal

Samantha Fryling

www.art-dept.com

Art Department



Shirt: I Dig Denim
Jumper: Charles & Ron
Hat: Kristina Dragomir by Mamokhi
Belt (on hat): Amour Bows

Samantha Fryling

www.art-dept.com

Art Department



Jumper: OTT
Bra: Models Own
Shoes: Converse
Earrings: Madame Baloge

Samantha Fryling

www.art-dept.com

Art Department



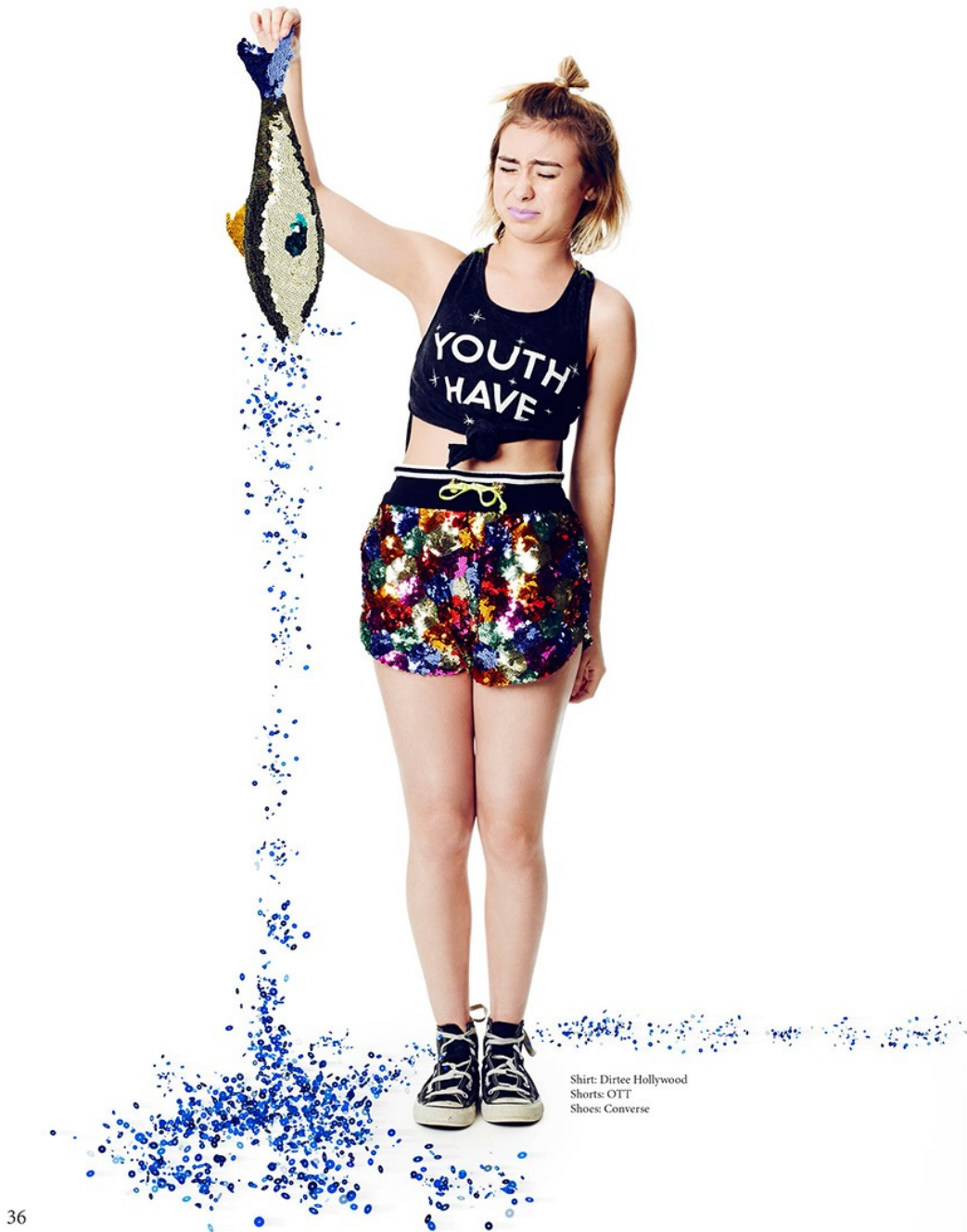
Sweater: Digby Jackson
Pants & Hat: Bunny Holiday
Shoes: Models Own

34

Samantha Fryling

www.art-dept.com

Art Department



Shirt: Dirtee Hollywood
Shorts: OTT
Shoes: Converse

36

Samantha Fryling

www.art-dept.com

Art Department



Dress: Charles & Ron
Headband: Amour Bows
Socks: Pair of Thieves
Shoes: Models Own

35

Samantha Fryling

www.art-dept.com

Art Department



Shirt: ZIZTAR
Pants: ZIZTAR
Shoes: Novesta
Earrings: Models Own
Ring: Topshop

37

Samantha Fryling

www.art-dept.com

Art Department



Samantha Fryling

www.art-dept.com

Art Department



DRESS LADIDA FEATHER HEAD PIECE TUTU DU MONDE

Samantha Fryling

www.art-dept.com

Art Department



Samantha Fryling

www.art-dept.com

Art Department



Samantha Fryling

www.art-dept.com

Art Department



Samantha Fryling

www.art-dept.com

Art Department



Samantha Fryling

www.art-dept.com

Art Department



PHOTOGRAPHER SARA PINE
WARDROBE SARAH LOWE AND SUNSHINE MADSEN
HAIR AND MAKE UP SAMANTHA FRYLING
ART DIRECTION JOEL GEIST
MODEL MAYA J
PRODUCTION ON 5TH

Samantha Fryling

www.art-dept.com

Art Department



Samantha Fryling

www.art-dept.com

Art Department



Samantha Fryling

www.art-dept.com

Art Department



Samantha Fryling

www.art-dept.com

Art Department



Samantha Fryling

www.art-dept.com

Art Department



Samantha Fryling

www.art-dept.com

Art Department



Samantha Fryling

www.art-dept.com

Art Department



Samantha Fryling

www.art-dept.com

Art Department



Samantha Fryling

www.art-dept.com

Art Department



Samantha Fryling

www.art-dept.com

Art Department



Samantha Fryling

www.art-dept.com

Art Department



Samantha Fryling

www.art-dept.com

Art Department



Samantha Fryling

www.art-dept.com

Art Department



Samantha Fryling

www.art-dept.com

Art Department



Samantha Fryling

www.art-dept.com

Art Department



Samantha Fryling

www.art-dept.com

Art Department



Samantha Fryling

www.art-dept.com

Art Department



Samantha Fryling

www.art-dept.com

Art Department



Samantha Fryling

www.art-dept.com

Art Department



Samantha Fryling

www.art-dept.com

Art Department



Samantha Fryling

www.art-dept.com

Art Department



Samantha Fryling

www.art-dept.com

Art Department



Samantha Fryling

Art Department



Samantha Fryling

www.art-dept.com

Art Department



Samantha Fryling

www.art-dept.com

Art Department



Samantha Fryling

www.art-dept.com