

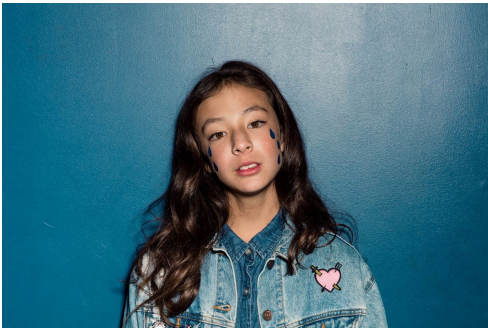
Art Department



Samantha Fryling

www.art-dept.com

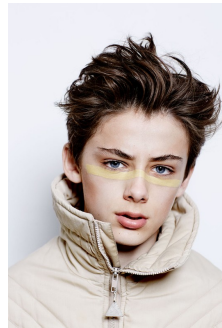
Art Department



Samantha Fryling

www.art-dept.com

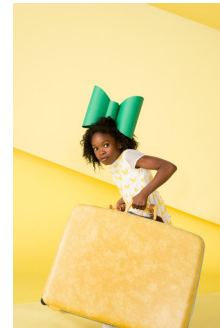
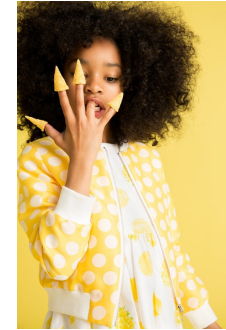
Art Department



Samantha Fryling

www.art-dept.com

Art Department



Samantha Fryling

www.art-dept.com

Art Department



Samantha Fryling

www.art-dept.com

Art Department



Andrea Lingo, Top
and Bottom
Katie Hines, Hair
Cristina Sandoz



Andrea Lingo, Top
and Bottom
Katie Hines, Hair
Cristina Sandoz



Madison H. Duffy, Makeup
Pamela Kuper, Hair
Cristina Sandoz, Top
and Bottom
Katie Hines, Hair
Cristina Sandoz



The Animal Observatory
Cristina Sandoz, Top and Bottom
Katie Hines, Hair
Cristina Sandoz



The Animal Observatory
Cristina Sandoz, Top and Bottom
Katie Hines, Hair
Cristina Sandoz



Andrea Lingo, Top
and Bottom
Katie Hines, Hair
Cristina Sandoz



**GIRL
POWER**

PHOTOGRAPHER: SARAH YNE
HAIR: JESSIE JAMES
MAKEUP: SAMANTHA FRYLING / ART DEPARTMENT
PRODUCTION: PRODUCTIONS OF 8
SPECIAL THANKS TO 8



Samantha Fryling

www.art-dept.com

Art Department



Samantha Fryling

www.art-dept.com

Art Department



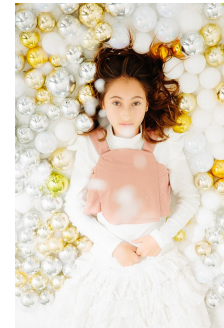
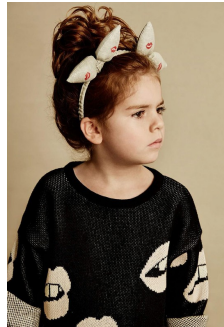
Samantha Fryling

www.art-dept.com

Art Department



PHOTOGRAPHER SARA PINE
WARDROBE SARAH LOUI AND CORINNE MARSON
HAIR AND MAKE UP SAMANTHA FRYLING
ART DIRECTOR JILL GUST
MODEL MAYA J
PRODUCTION DAVID



Samantha Fryling

www.art-dept.com

Art Department



Samantha Fryling

www.art-dept.com