

Art Department



Mariah Walker – OLD

www.art-dept.com

Art Department



Mariah Walker – OLD

www.art-dept.com

Art Department



Mariah Walker – OLD

www.art-dept.com

Art Department



Mariah Walker – OLD

Art Department



Mariah Walker – OLD

Art Department



Mariah Walker – OLD

www.art-dept.com

Art Department



Mariah Walker – OLD

www.art-dept.com

Art Department



Mariah Walker – OLD

Art Department



Mariah Walker – OLD

Art Department



The image shows the cover of the magazine 'Earle Shaw's'. A young girl with long dreadlocks is wearing a black beret, a grey and green patterned cardigan over a plaid shirt, and grey plaid trousers. She is standing with her arms crossed. The magazine title 'Earle Shaw's' is in large orange letters at the top. Below the title, it says 'INFANTS, GIRLS' AND BOYS' WEAR REVIEW' on the left and 'VOLUME 107 ISSUE 1 • JANUARY/FEBRUARY 2023 \$10.00' on the right. To the right of the girl, there is a green triangle pointing down, followed by the text 'FRESH FALL LOOKS' in large black letters, and 'PATTERN PLAY AND LUXE LAYERING' in smaller black letters. Below that is an orange horizontal line, followed by 'AT HOME WITH HATLEY' in green, another orange horizontal line, 'VIVA MAGENTA' in green, another orange horizontal line, and 'HOLIDAY ON DISPLAY' in green.

Earle Shaw's

INFANTS, GIRLS' AND BOYS' WEAR REVIEW

VOLUME 107 ISSUE 1 • JANUARY/FEBRUARY 2023 \$10.00

▼

**FRESH
FALL LOOKS**

PATTERN PLAY
AND LUXE LAYERING

—

AT HOME
WITH HATLEY

—

VIVA MAGENTA

—

HOLIDAY ON
DISPLAY

Mariah Walker – OLD

www.art-dept.com

Art Department



Mariah Walker – OLD

www.art-dept.com

Art Department



Mariah Walker – OLD

www.art-dept.com

Art Department



Mariah Walker – OLD

www.art-dept.com

Art Department



Mariah Walker – OLD

www.art-dept.com

Art Department



Mariah Walker – OLD

www.art-dept.com

Art Department



Mariah Walker – OLD

Art Department



Mariah Walker – OLD

www.art-dept.com

Art Department



Mariah Walker – OLD

www.art-dept.com

Art Department



Mariah Walker – OLD

Art Department



Mariah Walker – OLD

Art Department



Mariah Walker – OLD

Art Department



Mariah Walker – OLD

www.art-dept.com

Art Department



Mariah Walker – OLD

Art Department



Mariah Walker – OLD

Art Department



Mariah Walker – OLD

Art Department



Mariah Walker – OLD

Art Department



Mariah Walker – OLD

Art Department



Mariah Walker – OLD

Art Department



Mariah Walker – OLD

www.art-dept.com

Art Department

Earnshaw's

INFANTS, GIRLS' AND BOYS' WEAR REVIEW

VOLUME 106 ISSUE 2 • APRIL/MAY 2022 \$10.00

► **THE BABY ISSUE**
**MODERN HUES
& SPUNKY
PRINTS FOR
BIG CITY STYLE**



—
**BRECK KIDZ EMBRACES
THE GREAT OUTDOORS**
SWEET SLEEPWEAR
**STEP-BY-STEP
WITH FLOAFERS**

Mariah Walker – OLD

www.art-dept.com

Art Department



Baby Eliza is wearing a green sweatshirt by Kenzo, pants by Le Petit Coco, boots by Timberland, and the wooden animal is by Tender Leaf Toys. Mom Fatou is wearing her own clothes.

22

**SWEET
CHILD
OF
MINE**

A STORY OF SPUNKY HUES AND
DYNAMIC PATTERNS
AS DIVERSE AS THESE LITTLE
MODELS AND THEIR MAMAS
PHOTOGRAPHED IN THEIR OWN
NYC-AREA HOMES.

PHOTOGRAPHY BY ZOE ADLERSBERG
STYLING + CONCEPT BY MARIAH WALKER

Mariah Walker – OLD

www.art-dept.com

Art Department



Baby Tristan is wearing a sweatshirt by **Cherubino** and pants by **Hublot**.
Mom Jacqueline is wearing a top by **Tia Ciabani**. Opposite page: Baby Tristan is wearing
a sweatshirt by **Mon Coeur** and pants by **Coco au Lait**. Mom
Jacqueline is wearing a shirt by **Bensimon** and the fox toy is by **Moulin Roty**.

Mariah Walker – OLD

Art Department



On the left, Baby Gian Carlos is wearing a bodysuit by Sapling and a green bodysuit by Nike. On the right, Baby Gian Lucas is wearing a sweatshirt by Iceberg, pants by Sapling and the felt dinosaur toy is by Papoose. Opposite page: Mom Genesis is wearing a dress by Tia Cibani. On the left, Baby Gian Lucas is wearing a striped T shirt by Molo, a bloomer by Tia Cibani and fleece booties by Zutano. On the right, Baby Gian Carlos is wearing a blue bodysuit by Cotton Bloom, an overall by Oeuf and fleece booties by Zutano.



Mariah Walker – OLD

Art Department



Baby Alicia is wearing a bodysuit by Coccolli, a jumpsuit by Kickee Pants and shoes by Trintoot. Oobooorle page: Mom Assel is wearing her own dress and Jewelry. Baby Alicia, is wearing a jumpsuit by Lull & Me and a cardigan by Boeton.



Mariah Walker – OLD

Art Department



Baby Romeo is wearing a one-piece by **Coccolli**, a rainbow sweatshirt by **Pink Peony** and the striped rabbit toy is by **Apple Park**. Opposite page: Baby Romeo is wearing a T-shirt by **Loxan**, plaid overall shorts by **Mans** and socks by **Nike**. Mom Caitlin her wearing her own clothes and the cat toy is by **Apple Park**. Casting by Julia Samersova for Cast Inc.; hair and makeup by Clelia Bergonzoli/Ray Brown.

Mariah Walker – OLD

Art Department



Mariah Walker – OLD

Art Department



Mariah Walker – OLD

www.art-dept.com

Art Department



Mariah Walker – OLD

www.art-dept.com

Art Department



Mariah Walker – OLD

www.art-dept.com

Art Department



Mariah Walker – OLD

Art Department



Mariah Walker – OLD

www.art-dept.com

Art Department



Mariah Walker – OLD

www.art-dept.com

Art Department



Mariah Walker – OLD

www.art-dept.com

Art Department



Mariah Walker – OLD

Art Department



Mariah Walker – OLD

Art Department



Mariah Walker – OLD

Art Department



Mariah Walker – OLD

Art Department



Mariah Walker – OLD

Art Department



Mariah Walker – OLD

Art Department



Mariah Walker – OLD

www.art-dept.com

Art Department



Mariah Walker – OLD

www.art-dept.com

Art Department



Mariah Walker – OLD

Art Department



Mariah Walker – OLD

www.art-dept.com

Art Department



Mariah Walker – OLD

Art Department



Mariah Walker – OLD

Art Department



Mariah Walker – OLD

www.art-dept.com

Art Department



Mariah Walker – OLD

www.art-dept.com

Art Department



Mariah Walker – OLD

Art Department



Mariah Walker – OLD

www.art-dept.com

Art Department



Mariah Walker – OLD

www.art-dept.com

Art Department



Mariah Walker – OLD

www.art-dept.com

Art Department



Mariah Walker – OLD

www.art-dept.com

Art Department



Mariah Walker – OLD

www.art-dept.com

Art Department



Mariah Walker – OLD

www.art-dept.com

Art Department



Mariah Walker – OLD

www.art-dept.com

Art Department



Mariah Walker – OLD

www.art-dept.com

Art Department



Mariah Walker – OLD

www.art-dept.com

Art Department



Mariah Walker – OLD

www.art-dept.com

Art Department



Mariah Walker – OLD

www.art-dept.com

Art Department



Mariah Walker – OLD

www.art-dept.com

Art Department



Mariah Walker – OLD

www.art-dept.com

Art Department



Mariah Walker – OLD

www.art-dept.com

Art Department



Mariah Walker – OLD

www.art-dept.com

Art Department



Mariah Walker – OLD

www.art-dept.com

Art Department



Mariah Walker – OLD

www.art-dept.com

Art Department



Mariah Walker – OLD

Art Department



Mariah Walker – OLD

www.art-dept.com

Art Department



Mariah Walker – OLD

www.art-dept.com

Art Department



Mariah Walker – OLD

www.art-dept.com

Art Department



Mariah Walker – OLD

www.art-dept.com

Art Department

WTD

**ARE
FAMILY**

FALL FASHION
BRINGS
GENERATIONS
CLOSER THROUGH
COORDINATING
COLORS, PRINTS
& MATERIALS.



PHOTOGRAPHY BY ZOE ADLERSBERG STYLING BY MARIAH WALKER

From left to right: Indy wears Lee hoodie; Navy wears On My Mind top under Agnes B. jacket; Sawyer wears DI 1961 black denim jacket; Asher wears Appaman pullover.

PAGE 19

Mariah Walker – OLD

www.art-dept.com

Art Department



Mariah Walker – OLD

www.art-dept.com

Art Department



Mariah Walker – OLD

Art Department



Uri wears **Uri Minkoff** jacket; Boheme wears **Kidding Around** one-piece. Opposite page: Asher wears **Oeuf** hat and jacket with **Appaman** camo shirt; Sawyer wears **Oeuf** hat and overalls.

Mariah Walker – OLD

www.art-dept.com

Art Department



Mariah Walker – OLD

Art Department



Mariah Walker – OLD

www.art-dept.com

Art Department



Clockwise: Stephanie wears **Greige** top with **Rebecca Minkoff** coat; Indy wears **Weatherproof Vintage** jacket; Asher wears **Me & Henry** plaid shirt; Sawyer wears **Oeuf** turtleneck and **Levi's** pants; Navy wears **DL1961** jacket. *Opposite page:* Indy wears **Puma** wears sweatshirt with **Elegant Baby** blanket over shoulder; Boheme wears **Greige** overalls and **Huxbaby** cardigan.

Photography by Zoe Adlersberg/
See Management; styling by Mariah Walker/Art Department NYC; hair by Cecilia Romero using TARA; makeup by Rebecca Alexander/See Management using Glossier; styling assistance by Khalila White.

Mariah Walker – OLD

www.art-dept.com

Art Department



Mariah Walker – OLD

www.art-dept.com

Art Department



Mariah Walker – OLD

Art Department



Mariah Walker – OLD

www.art-dept.com

Art Department



Mariah Walker – OLD

www.art-dept.com

Art Department



Mariah Walker – OLD

Art Department



Mariah Walker – OLD

www.art-dept.com

Art Department



Samsara wears
Pink Chicken dress
underneath coral
blouse by Tia Cibani.

Mariah Walker – OLD

Art Department



Dominique wears **Givenchy** anorak, **Raspberry Plum** skirt and **Cape Clogs** metallic clogs. *Opposite page:* Isabella wears **Catimini** rain jacket, silver leotard by **Appaman** and **Mas** tulle skirt.

22

Mariah Walker – OLD

www.art-dept.com

Art Department



Samsara wears sheer dress
and cape by **Carbon Soldier**
over dress by **Pink Chicken**.

Hair and makeup by Yumi
Kaizuka; photo assistance by
Jaime Ellington; styling
assistance by Khaila White.

25

Mariah Walker – OLD

www.art-dept.com

Art Department



Mariah Walker – OLD

Art Department



Mariah Walker – OLD

Art Department



Samara wears jacket by Western Chief, shirt by Anchors n Asteroids, collar by Cosmosophle, blue skirt by Kenzo, Baby Deer shoes, Fun Socks striped socks and Steiff teddy bear.

Hair and makeup by Yumi Kalzuka using Weleda Baby; photo assistance by Jaime Ellington; styling assistance by Khallia White.

Mariah Walker – OLD

www.art-dept.com

Art Department



Mariah Walker – OLD

www.art-dept.com

Art Department



Mariah Walker – OLD

www.art-dept.com

Art Department

european UNION

PHOTOGRAPHY
BY ZOE ADLERSBERG

**BOLD
COLORS,
MIXED
MATERIALS
& A PLETHORA
OF PRINTS
SAIL ACROSS
THE POND
FOR FALL.**

STYLING BY
MARIAH WALKER

Mariah Walker – OLD

Art Department



Emma wears blue corduroy jacket by **Kids on the Moon**, dusty pink jacket by **Yellow Pelota**, linen dress by **The New Society** and **Easy Peasy** heart necklace. *Opposite:* Emma wears **Mayoral** plaid wrap coat, **Infantium Victoria** with turtleneck and patterned pants and **Young Soles** boots.

20

Mariah Walker – OLD

www.art-dept.com

Art Department

Rein wears **Carlijnq** jacket, **Leoca** shirt, leopard joggers by **Soft Gallery**, **JRP Socks** graphic socks and **Bensimon** yellow sneakers. *Opposite:* Rein wears two white dresses and belt used as collar by **Little Creative Factory**.



22

Mariah Walker – OLD

www.art-dept.com

Art Department



Mariah Walker – OLD

Art Department



Mariah Walker – OLD

www.art-dept.com

Art Department



James wears striped scarf by **Kalinka**, sweatshirt by **Nadadelazos**, **Louis Louise** bomber jacket and his own glasses. Opposite: James wears **Hauptli Haus Kids** neck scarf, bear sweater by **EFVVA**, **Louis Louise** striped sweater, red pants by **Nukutavake** and his own glasses.

Mariah Walker – OLD

www.art-dept.com

Art Department



Mariah Walker – OLD

www.art-dept.com

Art Department



Mariah Walker – OLD

www.art-dept.com

Art Department



Sidney wears yellow coat by **Derhy Kids**, blue sweater by **Essence, Sproot & Sprout** collar, skirt by **Loredana, We Love Colors** tights and her own glasses. Opposite: Sidney wears striped dress by **Leoca**, sweater by **Anarkid, Sproot & Sprout** waist belt and her own glasses.

Photography by Zoe Adlersberg/See Management; styling by Mariah Walker, Art Department, NY; hair and makeup by Clelia Bergonzoli/Utopia NYC using Oribe Hair Care and Milk Makeup; styling assistance by May White.

Mariah Walker – OLD

www.art-dept.com

Art Department



Mariah Walker – OLD

Art Department



Mariah Walker – OLD

Art Department



Mariah Walker – OLD

www.art-dept.com

Art Department



Mariah Walker – OLD

www.art-dept.com

Art Department



Mariah Walker – OLD

Art Department

Earnshaw's

VOLUME 103 NUMBER 1 • JANUARY 2019 \$10.00

**≡HOT≡
FOR
COLD**

**THE NEW
HUE**
*Why Coral
Rocks*

*Outerwear Goes
BOLD and BRIGHT
for Fall '19*

.....

**MUST-HAVE GIFTS
FOR TOTS TO TWEENS**

*Suzanne Schwartz
of SAM on Building
a Luxury Brand-
Again*

Mariah Walker – OLD

Art Department



Mariah Walker – OLD

Art Department



Mariah Walker – OLD

www.art-dept.com

Art Department



Mariah Walker – OLD

www.art-dept.com

Art Department



Mariah Walker – OLD

www.art-dept.com

Art Department



Mariah Walker – OLD

www.art-dept.com

Art Department



Mariah Walker – OLD

www.art-dept.com

Art Department



Mariah Walker – OLD

Art Department



Mariah Walker – OLD

www.art-dept.com

Art Department



Mariah Walker – OLD

Art Department



Mariah Walker – OLD

www.art-dept.com

Art Department



Mariah Walker – OLD

Art Department



Mariah Walker – OLD

www.art-dept.com

Art Department



Mariah Walker – OLD

Art Department



Mariah Walker – OLD

www.art-dept.com

Art Department



Mariah Walker – OLD

www.art-dept.com

Art Department



Mariah Walker – OLD

Art Department



Mariah Walker – OLD

Art Department



Mariah Walker – OLD

www.art-dept.com

Art Department



Mariah Walker – OLD

www.art-dept.com

Art Department



Mariah Walker – OLD

www.art-dept.com

Art Department



Mariah Walker – OLD

www.art-dept.com

Art Department



Mariah Walker – OLD

www.art-dept.com

Art Department



Mariah Walker – OLD

www.art-dept.com

Art Department



Mariah Walker – OLD

www.art-dept.com

Art Department



Mariah Walker – OLD

Art Department



Mariah Walker – OLD

www.art-dept.com

Art Department



Mariah Walker – OLD

www.art-dept.com

Art Department



Mariah Walker – OLD

www.art-dept.com

Art Department



Mariah Walker – OLD

www.art-dept.com

Art Department



Mariah Walker – OLD

www.art-dept.com

Art Department



Mariah Walker – OLD

www.art-dept.com

Art Department



Mariah Walker – OLD

www.art-dept.com

Art Department



Mariah Walker – OLD

www.art-dept.com

Art Department



Mariah Walker – OLD

Art Department



Mariah Walker – OLD

Art Department



Mariah Walker – OLD

Art Department



Mariah Walker – OLD

Art Department



Mariah Walker – OLD

Art Department



Mariah Walker – OLD

Art Department



Mariah Walker – OLD

Art Department



Mariah Walker – OLD

www.art-dept.com

Art Department



Mariah Walker – OLD

Art Department



Mariah Walker – OLD

Art Department



Mariah Walker – OLD

Art Department



Mariah Walker – OLD

www.art-dept.com

Art Department



Mariah Walker – OLD

Art Department



Mariah Walker – OLD

www.art-dept.com

Art Department

EARNIE AWARD WINNERS • HALL OF FAME INDUCTEE: JOAN CALABRESE • RUFFLES RETURN

Earnshaw's

VOLUME 101 NUMBER 10 NOVEMBER/DECEMBER 2017 \$10.00

BEDTIME STORIES
A Tale of Adventurous Prints and Alluring Materials in Sleepwear.

A woman with short dark hair is shown in profile, facing left. She is wearing a long-sleeved pajama top and matching pants, both featuring a pattern of small white stars on a light blue background. She is also wearing a cape with horizontal stripes in red, white, and blue. In her hands, she holds a glowing blue sword. She is standing on a dark blue, draped fabric that resembles a bedsheet. The background is a solid dark blue.

Mariah Walker – OLD

www.art-dept.com

Art Department



Mariah Walker – OLD

www.art-dept.com

Art Department



Mariah Walker – OLD

Art Department



Mariah Walker – OLD

Art Department



Mariah Walker – OLD

Art Department



Mariah Walker – OLD

Art Department



TWOFOURTWO

PHOTOGRAPHER: ANNA PALMA

RED

BOTH ARE WEARING SHOES DOC MARTINS
ONE IS WEARING *COLLAR BY CAPEZIO CAPE BY PROJECT 6
DRESS BODY WRAPPERS SHIRT BY ELLAND
THE OTHER IS WEARING *COLLAR BY CAPEZIO
BODY BY WE LOVE COLORS
SKIRT WORN AS A DRESS BY MISSYDRESS

Mariah Walker – OLD

www.art-dept.com

Art Department



Mariah Walker – OLD

www.art-dept.com

Art Department



Mariah Walker – OLD

www.art-dept.com

Art Department



Mariah Walker – OLD

www.art-dept.com

Art Department



Mariah Walker – OLD

www.art-dept.com

Art Department



Mariah Walker – OLD

www.art-dept.com

Art Department



Mariah Walker – OLD

www.art-dept.com

Art Department



Mariah Walker – OLD

Art Department



Mariah Walker – OLD

Art Department



Mariah Walker – OLD

Art Department



Mariah Walker – OLD

Art Department



Mariah Walker – OLD

Art Department



Mariah Walker – OLD

Art Department



EVERLASTING ELEGANCE

Classic Dresswear
Meets Modern-Day
Influences

Mariah Walker – OLD

www.art-dept.com

Art Department



Mariah Walker – OLD

Art Department



Mariah Walker – OLD

www.art-dept.com

Art Department



Mariah Walker – OLD

www.art-dept.com

Art Department



Mariah Walker – OLD

Art Department



Mariah Walker – OLD

www.art-dept.com

Art Department

LUNA
Das erste Mode- und Lifestylemagazin für die Familie

Nr. 62
13. Jahrgang
Mai/Juni 2017

Deutschland € 4,90
Österreich € 5,50
Schweiz CHF 8,00
BeNeLux € 5,70
Italien € 6,60
Spanien € 6,60
Frankreich € 6,60
lunamag.de

Lässige Väter
Moritz Bleibtreu und Lucas Gregorowicz über Erziehung

Draußen feiern
Tolle Ideen fürs Picknick im Grünen

Special
Von groß bis klein!
Familienautos mit Spaßfaktor

Cooler Kids, starke Looks
... so kann der Sommer kommen: wilde Styles, Bademode und Schuhe, Schuhe, Schuhe

62

Mariah Walker – OLD

Art Department



Mariah Walker – OLD

www.art-dept.com

Art Department



Mariah Walker – OLD

Art Department



Mariah Walker – OLD

Art Department



Mariah Walker – OLD

Art Department



Mariah Walker – OLD

Art Department



Mariah Walker – OLD

Art Department



Mariah Walker – OLD

Art Department



Mariah Walker – OLD

Art Department



Left to right: We Love Colors all lights, Jessica Simpson appliqued boot, Nanette Lepore studded boot, Step & Stride boot with buckles, Western Chief sneaker boot, Nine West boot, Lili Collection shoe, Nina platform sneaker.

30

Mariah Walker – OLD

www.art-dept.com

Art Department



Mariah Walker – OLD

www.art-dept.com

Art Department



Mariah Walker – OLD

www.art-dept.com

Art Department



Left to right: River & Rosy hair clips, model's own tank top, We Love Colors tights, Nina boots.

23

Mariah Walker – OLD

www.art-dept.com

Art Department



26

Mariah Walker – OLD

www.art-dept.com

Art Department



Mariah Walker – OLD

Art Department



Mariah Walker – OLD

Art Department



Mariah Walker – OLD

Art Department



Mariah Walker – OLD

www.art-dept.com

Art Department



Mariah Walker – OLD

Art Department



Mariah Walker – OLD

Art Department



Mariah Walker – OLD

Art Department



Mariah Walker – OLD

Art Department

EUROPEAN FALL TREND REPORT • INSIDE TRIMFOOT'S LEGACY • WHAT'S COOL FOR BACK-TO-SCHOOL

Earnshaw's

VOLUME 101 NUMBER 3

MARCH 2017 \$10.00

Sister Act

Explore the dynamic of fall fashion and family ties.



Mariah Walker – OLD

www.art-dept.com

Art Department



From left to right: Hunter, 6, wears Babe & Tess scarf (on head), Charm It! necklace, Magpie coat, Art & Eden dress; Hayden, 5, wears Nice Things scarf, Charm It! necklace, Tia Cibani dress, Pink Chicken pants.

Mariah Walker – OLD

www.art-dept.com

Art Department



Mariah Walker – OLD

www.art-dept.com

Art Department

This page (left to right): Andaluca wears **Mini Molly** sweater, **Mia New York** shirt (worn underneath sweater), **Puma** pants; Constantina wears **River & Rosy** headband, **Hannah Banana** shirt, **E-Land Kids** long-sleeve shirt (worn underneath), **Creamle** pants; Bianca wears **Andy & Evan** sweater vest, **E-Land Kids** long-sleeve shirt (underneath vest), **CPC Childrenswear** skirt.

Opposite page: Hayden wears **Bows Arts** headband, **Barque** jacket, **Deux Par Deux** dress, **Natural Steps** shoes; Hunter wears **Bows Arts** headband, **Sonatina** scarf (being held), **Andy & Evan** jacket, **Frenchie Mini Couture** dress, **Nice Things** leggings, **Polo Ralph Lauren** shoes.



Mariah Walker – OLD

www.art-dept.com

Art Department



From left to right: August, 3, wears Imps & Elfs sweater, Blade & Rose long-sleeve shirt (worn underneath), E-Land Kids pants; Mae, 9, wears Catya hat, Tia Cibani necklace, Mia New York coat, Eddie Pen shirt, Frenchie Mini Couture skirt, Puma pants; Leo, 7, wears Dal Lago jacket, Barque vest, Nukutavake long-sleeve polo, Watchtude watch, Dal Lago pants.

26

Mariah Walker – OLD

www.art-dept.com

Art Department



From left to right: August wears **Slaomimi Play** shirt with cape, **Puma** pants; Leo wears **Ep** hat, **Boboli** sweater, **Rosé Pistol** shirt (worn underneath), **Jack Thomas** pants. *Opposite page:* Herbert wears **Art & Eden** sweatshirt, **Andy & Evan** shirt (worn underneath), **Hoonana** pants; Andalucia wears **Love & Sunflowers** jumpsuit, **Lily Nily** bracelets, **Dr. Martens** shoes.

Hair and makeup: Abigail Pilcher; styling assistant: Madison Donaldson.

Mariah Walker – OLD

www.art-dept.com

Art Department



Mariah Walker – OLD

www.art-dept.com

Art Department



Mariah Walker – OLD

Art Department



Mariah Walker – OLD

Art Department



Mariah Walker – OLD

www.art-dept.com

Art Department



Mariah Walker – OLD

www.art-dept.com

Art Department



Mariah Walker – OLD

www.art-dept.com

Art Department



Mariah Walker – OLD

Art Department



Mariah Walker – OLD

www.art-dept.com

Art Department



Egg by Susan Lazar top and bloomers.
Opposite page: Frenchie Mini Couture jumpsuit.

Mariah Walker – OLD

www.art-dept.com

Art Department



Mariah Walker – OLD

www.art-dept.com

Art Department



Mariah Walker – OLD

www.art-dept.com

Art Department



Mariah Walker – OLD

Art Department



Mariah Walker – OLD

www.art-dept.com

Art Department



Mariah Walker – OLD

www.art-dept.com

Art Department



Mariah Walker – OLD

www.art-dept.com

Art Department



Mariah Walker – OLD

www.art-dept.com

Art Department



Mariah Walker – OLD

www.art-dept.com

Art Department



Mariah Walker – OLD

www.art-dept.com

Art Department



Mariah Walker – OLD

www.art-dept.com

Art Department



Mariah Walker – OLD

Art Department



Mariah Walker – OLD

www.art-dept.com

Art Department



Mariah Walker – OLD

www.art-dept.com

Art Department



LEAN
IN

Photography: Stefano Azario @ Sarah Laird
Styling: Mariah Walker @ Art Dept
Retouch: Andrea @ Digital Area
Assistant: Zachary Chick
Models: Murphy and Jasmine

Mariah Walker – OLD

www.art-dept.com

Art Department



Mariah Walker – OLD

www.art-dept.com

Art Department



Mariah Walker – OLD

Art Department



Mariah Walker – OLD

Art Department



Mariah Walker – OLD

www.art-dept.com

Art Department



Mariah Walker – OLD

Art Department



Mariah Walker – OLD

www.art-dept.com

Art Department



Mariah Walker – OLD

www.art-dept.com

Art Department



Mariah Walker – OLD

www.art-dept.com

Art Department



Mariah Walker – OLD

www.art-dept.com

Art Department



Mariah Walker – OLD

www.art-dept.com

Art Department



Mariah Walker – OLD

www.art-dept.com

Art Department



Mariah Walker – OLD

www.art-dept.com

Art Department



Mariah Walker – OLD

www.art-dept.com

Art Department



Mariah Walker – OLD

www.art-dept.com

Art Department



Mariah Walker – OLD

www.art-dept.com

Art Department



Mariah Walker – OLD

Art Department



Mariah Walker – OLD

www.art-dept.com

Art Department



Mariah Walker – OLD

Art Department



Mariah Walker – OLD

www.art-dept.com

Art Department



Mariah Walker – OLD

www.art-dept.com

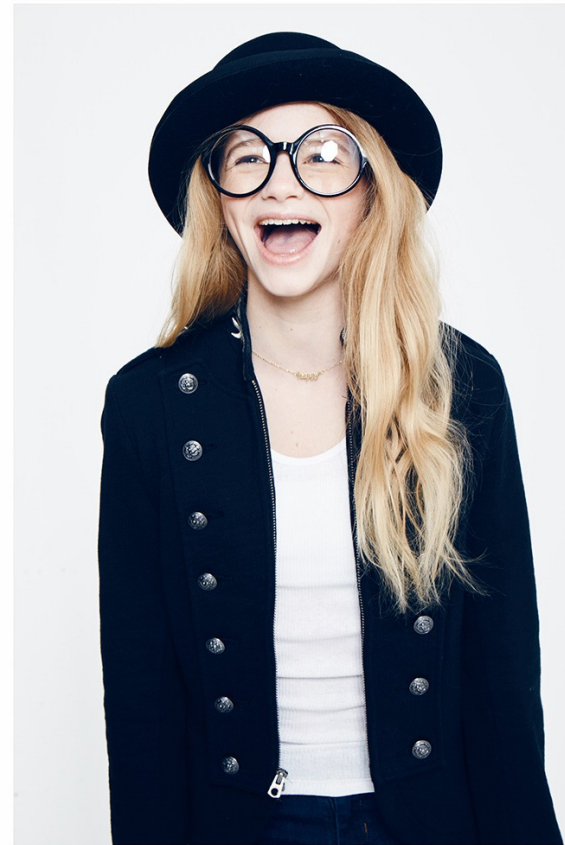
Art Department



Mariah Walker – OLD

www.art-dept.com

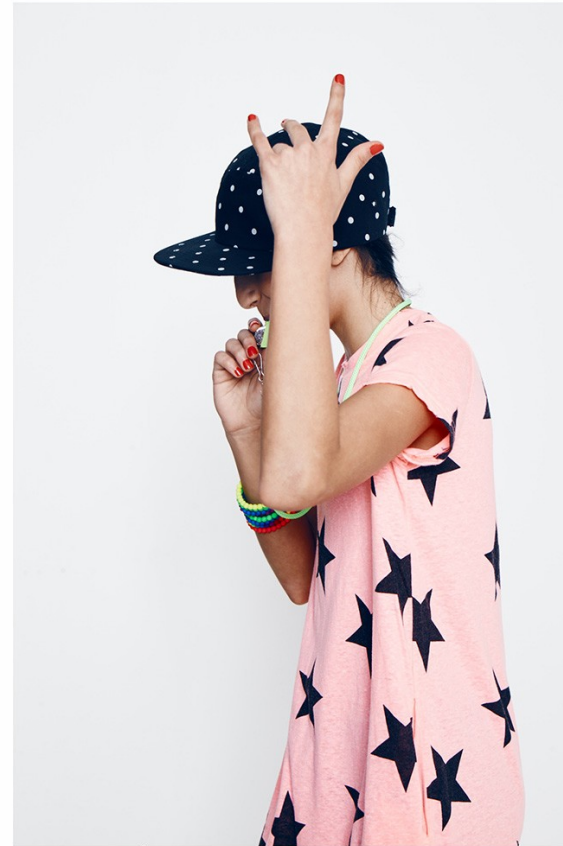
Art Department



INDEPENDENT

Mariah Walker – OLD

Art Department



UNIQUE

Mariah Walker – OLD

Art Department



Take ME SERIOUS

Mariah Walker – OLD

Art Department



Be yourself

Mariah Walker – OLD

Art Department



BEING LAZY

Mariah Walker – OLD

Art Department



QUIRKY

Mariah Walker – OLD

www.art-dept.com

Art Department



Mariah Walker – OLD

www.art-dept.com

Art Department



Mariah Walker – OLD

Art Department



Mariah Walker – OLD

www.art-dept.com

Art Department



Mariah Walker – OLD

www.art-dept.com

Art Department



sib·ling (sĭb'ĭŋg)

n.

one of two or more individuals
having one or both parents in
common; a brother or sister.

Mariah Walker – OLD

www.art-dept.com

Art Department



Mariah Walker – OLD

www.art-dept.com

Art Department



Mariah Walker – OLD

www.art-dept.com

Art Department



Mariah Walker – OLD

www.art-dept.com

Art Department



Mariah Walker – OLD

Art Department



Mariah Walker – OLD

www.art-dept.com

Art Department



Mariah Walker – OLD

Art Department



Mariah Walker – OLD

Art Department



Mariah Walker – OLD

www.art-dept.com

Art Department



Mariah Walker – OLD

Art Department



Mariah Walker – OLD

Art Department



Mariah Walker – OLD

Art Department



Mariah Walker – OLD

Art Department



Mariah Walker – OLD

Art Department



Mariah Walker – OLD

www.art-dept.com

Art Department



Mariah Walker – OLD

Art Department



Mariah Walker – OLD

www.art-dept.com

Art Department



Mariah Walker – OLD

www.art-dept.com

Art Department



Mariah Walker – OLD

www.art-dept.com

Art Department



Mariah Walker – OLD

Art Department



Mariah Walker – OLD

www.art-dept.com

Art Department



Mariah Walker – OLD

www.art-dept.com

Art Department



Mariah Walker – OLD

www.art-dept.com

Art Department



Mariah Walker – OLD

Art Department



Mariah Walker – OLD

Art Department



Mariah Walker – OLD

Art Department



Mariah Walker – OLD

Art Department



Mariah Walker – OLD

Art Department



Mariah Walker - OLD

Art Department



Mariah Walker – OLD

www.art-dept.com

Art Department



Mariah Walker – OLD

Art Department



Mariah Walker – OLD

Art Department



Mariah Walker – OLD

Art Department



Mariah Walker – OLD

Art Department



Mariah Walker – OLD

www.art-dept.com

Art Department



Mariah Walker – OLD

Art Department



Mariah Walker – OLD