

# Art Department



Rebecca Plymate

[www.art-dept.com](http://www.art-dept.com)

# Art Department



Rebecca Plymate

[www.art-dept.com](http://www.art-dept.com)

# Art Department



Rebecca Plymate

[www.art-dept.com](http://www.art-dept.com)

# Art Department



Rebecca Plymate

[www.art-dept.com](http://www.art-dept.com)

# Art Department



Rebecca Plymate

[www.art-dept.com](http://www.art-dept.com)

# Art Department



Rebecca Plymate

[www.art-dept.com](http://www.art-dept.com)

# Art Department



Rebecca Plymate

[www.art-dept.com](http://www.art-dept.com)

# Art Department



Rebecca Plymate

[www.art-dept.com](http://www.art-dept.com)



# Art Department



Rebecca Plymate

[www.art-dept.com](http://www.art-dept.com)

# Art Department



Rebecca Plymate

[www.art-dept.com](http://www.art-dept.com)

# Art Department



Rebecca Plymate

[www.art-dept.com](http://www.art-dept.com)

# Art Department



Rebecca Plymate

[www.art-dept.com](http://www.art-dept.com)

# Art Department



Rebecca Plymate

[www.art-dept.com](http://www.art-dept.com)

# Art Department

MOVADO



Rebecca Plymate

[www.art-dept.com](http://www.art-dept.com)

# Art Department



Rebecca Plymate

[www.art-dept.com](http://www.art-dept.com)

# Art Department



Rebecca Plymate

[www.art-dept.com](http://www.art-dept.com)



# Art Department



Rebecca Plymate

[www.art-dept.com](http://www.art-dept.com)

# Art Department



Rebecca Plymate

[www.art-dept.com](http://www.art-dept.com)

# Art Department



Rebecca Plymate

[www.art-dept.com](http://www.art-dept.com)

# Art Department



Rebecca Plymate

[www.art-dept.com](http://www.art-dept.com)

# Art Department



Rebecca Plymate

[www.art-dept.com](http://www.art-dept.com)

# Art Department



Rebecca Plymate

[www.art-dept.com](http://www.art-dept.com)

# Art Department



Rebecca Plymate

[www.art-dept.com](http://www.art-dept.com)

# Art Department



Rebecca Plymate

[www.art-dept.com](http://www.art-dept.com)



# Art Department



SANDPIPER DRESS  
lantern sleeve,  
engineered peacock  
print, self belt  
(not shown), 0-14,  
silk twill in  
cameo white ms.  
peacock. \$298.

Rebecca Plymate

[www.art-dept.com](http://www.art-dept.com)

# Art Department



DARCIA DRESS thin straps with beaded ruffle at top, elastic at natural waist, removable belt. 0-14. silk in limeade wishing you were here, also in Lilly's pink dirty shirley. \$258. ANYA DRESS tunic style with v-neck, pin tucked sleeves with novelty button detail, removable belt. 0-14. silk crepe de chine in surf blue checking in. \$298.

FASCINATING FACT: certain species of lizards can change color based on their moods.

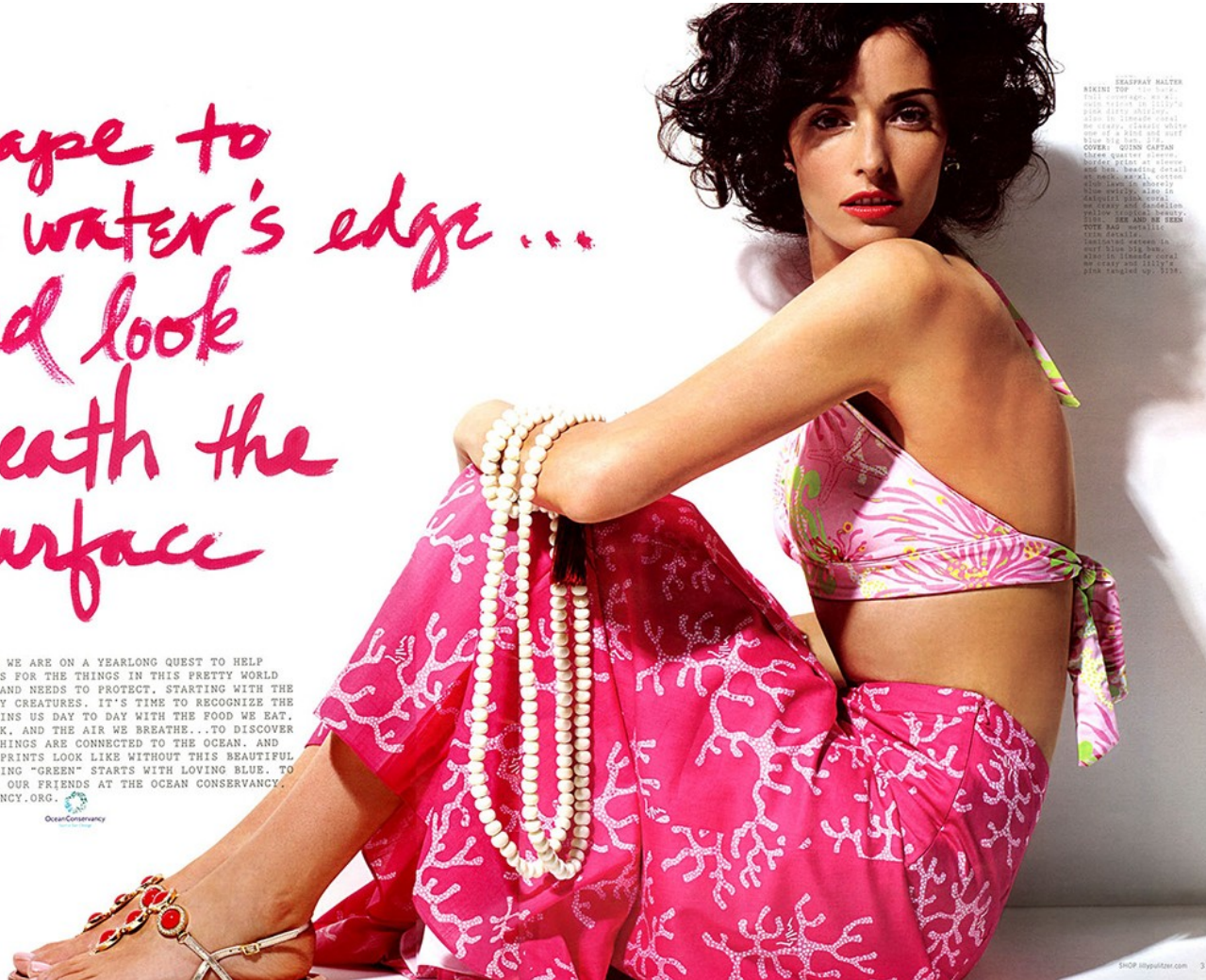
## Rebecca Plymate

[www.art-dept.com](http://www.art-dept.com)

# Art Department

Escape to  
the water's edge ...  
and look  
beneath the  
surface

BEING SEA WORTHY. WE ARE ON A YEARLONG QUEST TO HELP GENERATE AWARENESS FOR THE THINGS IN THIS PRETTY WORLD THAT LILLY LOVES AND NEEDS TO PROTECT. STARTING WITH THE OCEAN AND ITS MANY CREATURES. IT'S TIME TO RECOGNIZE THE SOURCE THAT SUSTAINS US DAY TO DAY WITH THE FOOD WE EAT, THE WATER WE DRINK, AND THE AIR WE BREATHE... TO DISCOVER THAT ALL LIVING THINGS ARE CONNECTED TO THE OCEAN. AND WHAT WOULD LILLY PRINTS LOOK LIKE WITHOUT THIS BEAUTIFUL INSPIRATION? LIVING "GREEN" STARTS WITH LOVING BLUE. TO LEARN MORE, VISIT OUR FRIENDS AT THE OCEAN CONSERVANCY. WWW.OCEANCONSERVANCY.ORG.



BEADFRAY HALTER  
SKINNY TOP  
PINK DRESS  
COVER: QUINN CAPTAN  
TOTE BAG

SHOP lilyprint.com 3

## Rebecca Plymate

[www.art-dept.com](http://www.art-dept.com)

# Art Department

---

GENEVIEVE DRESS three quarter sleeve, tunic style dress, novelty buttons on center front. \$79, silk in deliquiri pink wishing you were here, also in multi near-chin. \$29.

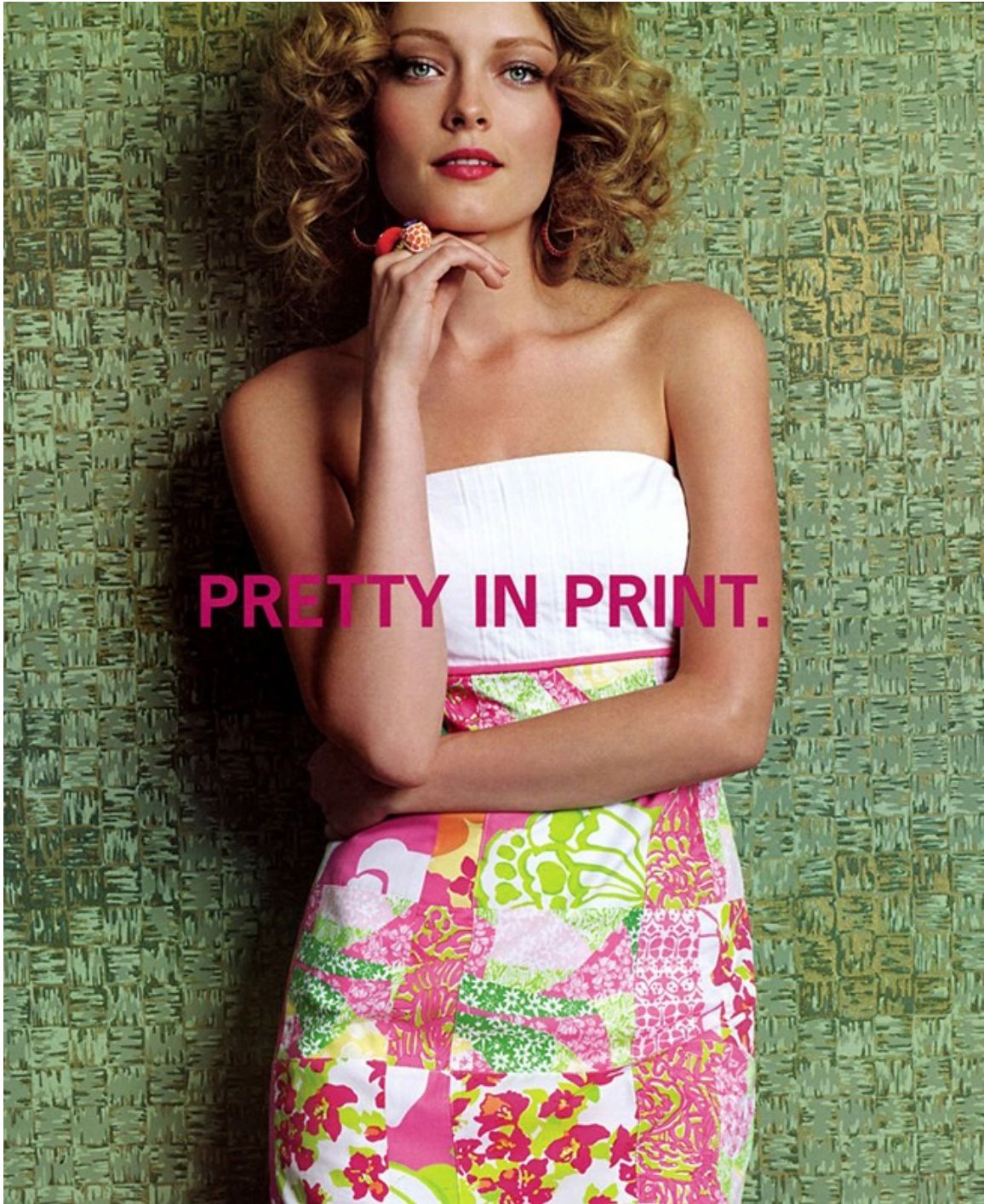
FASCINATING FACT: The fashion of the 1960s was a mix of styles. At one point, Billie Holiday was wearing a dress that was a mix of styles. She was wearing a dress that was a mix of styles.



Rebecca Plymate

[www.art-dept.com](http://www.art-dept.com)

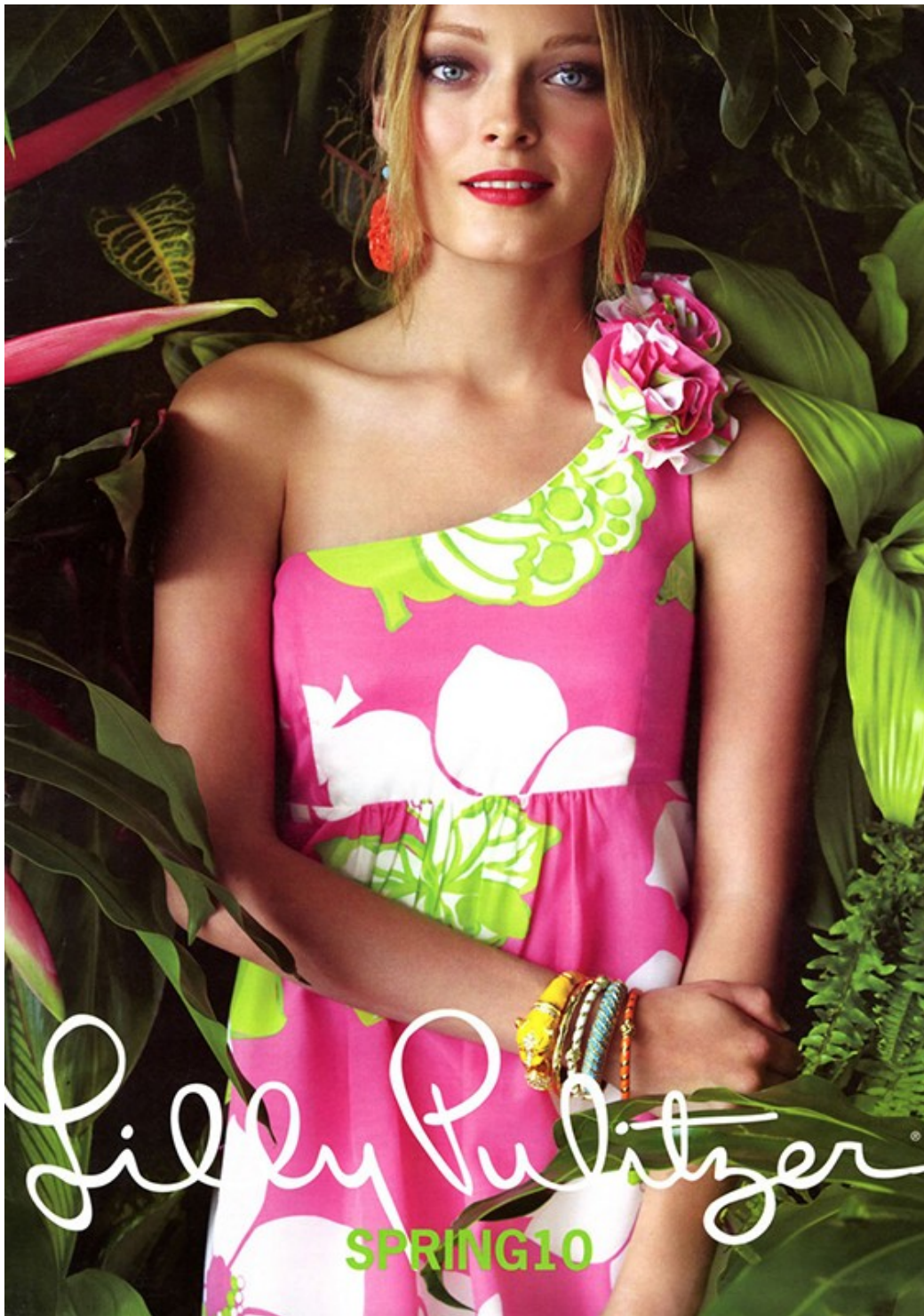
# Art Department



Rebecca Plymate

[www.art-dept.com](http://www.art-dept.com)

# Art Department



Rebecca Plymate

[www.art-dept.com](http://www.art-dept.com)

# Art Department



Rebecca Plymate

[www.art-dept.com](http://www.art-dept.com)

# Art Department



Rebecca Plymate

[www.art-dept.com](http://www.art-dept.com)



# Art Department



Rebecca Plymate

[www.art-dept.com](http://www.art-dept.com)

# Art Department



Rebecca Plymate

[www.art-dept.com](http://www.art-dept.com)

# Art Department



Rebecca Plymate

[www.art-dept.com](http://www.art-dept.com)

# Art Department



Rebecca Plymate

[www.art-dept.com](http://www.art-dept.com)

# Art Department



Rebecca Plymate

[www.art-dept.com](http://www.art-dept.com)

# Art Department



Rebecca Plymate

[www.art-dept.com](http://www.art-dept.com)

# Art Department



#### READY FOR TAKEOFF

camilla crochet short dress \* \$425  
(slip sold separately)  
elena gishelini cupido bag \* \$995  
pepita knot bracelet \$135

#### OPPOSITE PAGE

by malene birger morouque top \* \$375  
AG cropped boyfriend khaki \$225  
clockwise from right  
waterlily vera shopper \$350  
calypso vintage weekender \$495  
elena gishelini cupido bag \* \$995  
antik batik albane tote \$395  
sissi rossi zip hobo \* \$825  
sissi rossi gold trim tote \* \$775  
antik batik lucinda mirror bag \$425

\* in select stores & online

always free shipping on orders over \$250

FIND A STORE NEAR YOU AT CALYPSO-CELLE.COM

## Rebecca Plymate

[www.art-dept.com](http://www.art-dept.com)

# Art Department

*pack your bags.*

shake off the winter cold with a dose of sunshine on your shoulders & sand between your toes.  
we've got just the right pieces to make your next spring getaway effortless & chic... & packing a snap.



Rebecca Plymate

[www.art-dept.com](http://www.art-dept.com)



# Art Department



Rebecca Plymate

[www.art-dept.com](http://www.art-dept.com)

# Art Department



CALYPSO  
*St. Barth*

NEW YORK EAST HAMPTON MONTAUK SAG HARBOR SOUTHAMPTON WESTHAMPTON CALYPSOSTBARTH.COM

## Rebecca Plymate

[www.art-dept.com](http://www.art-dept.com)

# Art Department



Rebecca Plymate

[www.art-dept.com](http://www.art-dept.com)

# Art Department



Rebecca Plymate

[www.art-dept.com](http://www.art-dept.com)

# Art Department



Rebecca Plymate

[www.art-dept.com](http://www.art-dept.com)

# Art Department



Rebecca Plymate

[www.art-dept.com](http://www.art-dept.com)

# Art Department



Rebecca Plymate

[www.art-dept.com](http://www.art-dept.com)

# Art Department



Rebecca Plymate

[www.art-dept.com](http://www.art-dept.com)



# Art Department



Rebecca Plymate

[www.art-dept.com](http://www.art-dept.com)

# Art Department



Rebecca Plymate

[www.art-dept.com](http://www.art-dept.com)

# Art Department



Rebecca Plymate

[www.art-dept.com](http://www.art-dept.com)

# Art Department



**Y**es, you can throw a party. You, of the take-out menus and tower of empty deli containers—yes, even you of the barren fridge. And guess what? Everyone's coming, and no one's going to want to leave, because our tip-packed guide to entertaining has you covered, from your menu to your makeup.

**INSTANTLY ELEGANT  
SERVING IDEA**  
Skewer lamb slices on a sprig of fresh rosemary for a prettier presentation. Recipe on page 257.

## Rebecca Plymate

[www.art-dept.com](http://www.art-dept.com)

# Art Department



Rebecca Plymate

[www.art-dept.com](http://www.art-dept.com)

# Art Department



Rebecca Plymate

[www.art-dept.com](http://www.art-dept.com)

# Art Department



Rebecca Plymate

[www.art-dept.com](http://www.art-dept.com)

# Art Department



Rebecca Plymate

[www.art-dept.com](http://www.art-dept.com)



# Art Department



Rebecca Plymate

[www.art-dept.com](http://www.art-dept.com)

# Art Department



Rebecca Plymate

[www.art-dept.com](http://www.art-dept.com)

# Art Department



Rebecca Plymate

[www.art-dept.com](http://www.art-dept.com)

# Art Department

**VINCE**  
Effortless, simple & so sublime



Rebecca Plymate

[www.art-dept.com](http://www.art-dept.com)

# Art Department



Rebecca Plymate

[www.art-dept.com](http://www.art-dept.com)

# Art Department



ALICE+OLIVIA  
For the artist, party-goer & It Girl

Rebecca Plymate

[www.art-dept.com](http://www.art-dept.com)

# Art Department



Rebecca Plymate

[www.art-dept.com](http://www.art-dept.com)

# Art Department



Rebecca Plymate

[www.art-dept.com](http://www.art-dept.com)



# Art Department



Rebecca Plymate

[www.art-dept.com](http://www.art-dept.com)

# Art Department



Rebecca Plymate

[www.art-dept.com](http://www.art-dept.com)

# Art Department



Corto cappotto di  
lana con collo a listino,  
Max&Co. Stivali  
Viktor&Rolf. Pagina  
accanto. Minicoat  
di panno doppiopetto,  
Chloé. Stivaletti con  
plateau, Yves Saint  
Laurent. Servizio Carlo  
Alberto Pregnolato.  
Ha collaborato Chiara  
Bacigalupo. Trucco  
Tamah K. Pettinature  
Rebecca Plymate.

## Rebecca Plymate

[www.art-dept.com](http://www.art-dept.com)

# Art Department



Minicoat di lana con  
allacciatura nascosta,  
Versace. Stivaletti  
di pelle con platform  
e tacco a spillo, Yves  
Saint Laurent. Pagina  
accanto. Cappotto  
a trapezio di lana e  
cotone jacquard  
spalmato, l'M Isola  
Marras. Grande  
colbacco di volpe,  
Alexander McQueen.

## Rebecca Plymate

[www.art-dept.com](http://www.art-dept.com)

# Art Department



Rebecca Plymate

[www.art-dept.com](http://www.art-dept.com)

# Art Department



This page: Chanel swimsuit and denim hat, both from the Chanel boutique. Opposite, centre: Louis Vuitton cashmere sweater and silk shorts (as before). Bottom: Missoni silk top and knit pants.

## Rebecca Plymate

[www.art-dept.com](http://www.art-dept.com)

# Art Department



Rebecca Plymate

[www.art-dept.com](http://www.art-dept.com)

# Art Department



Rebecca Plymate

[www.art-dept.com](http://www.art-dept.com)



# Art Department



Rebecca Plymate

[www.art-dept.com](http://www.art-dept.com)

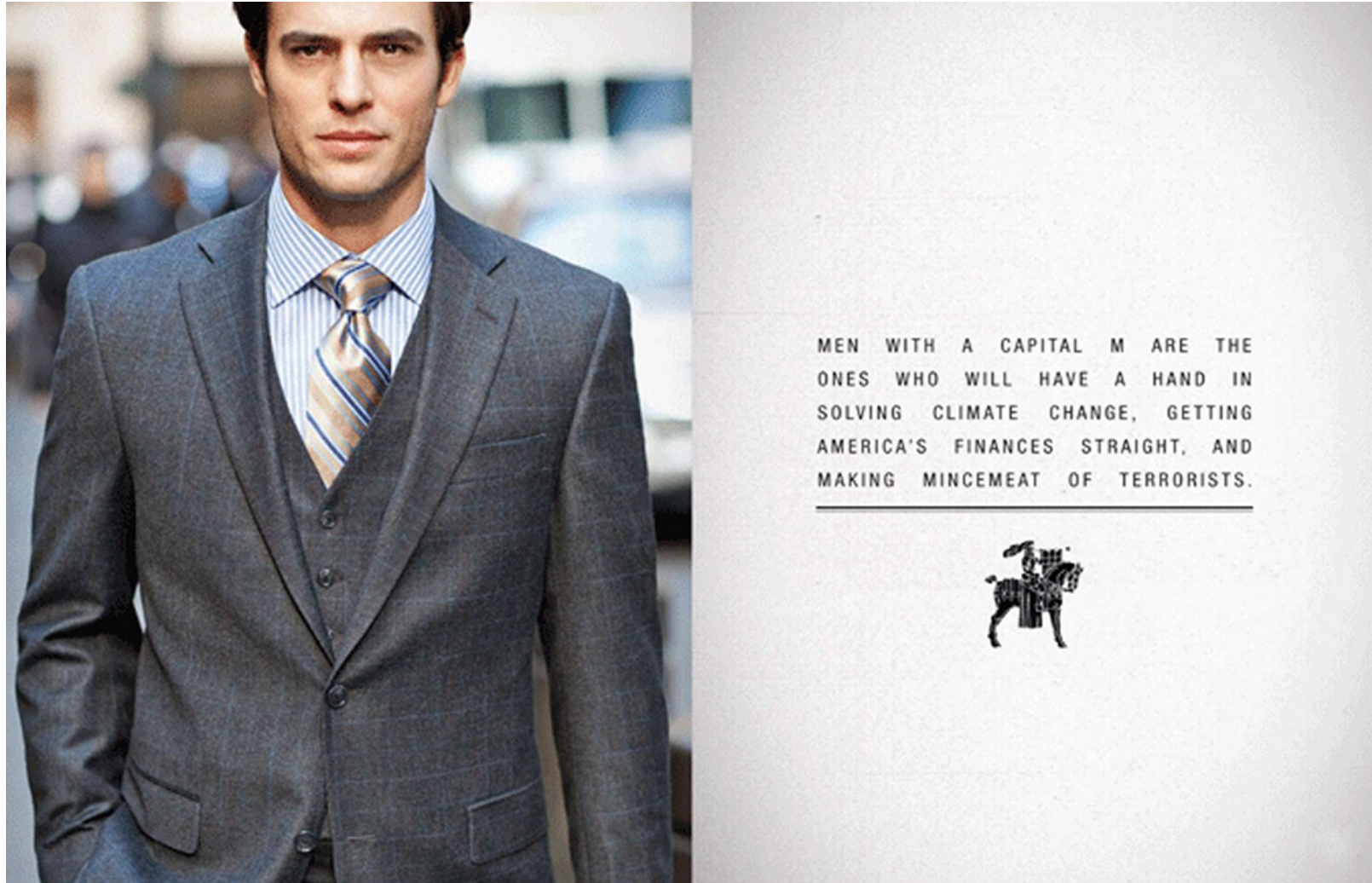
# Art Department



Rebecca Plymate

[www.art-dept.com](http://www.art-dept.com)

# Art Department



MEN WITH A CAPITAL M ARE THE  
ONES WHO WILL HAVE A HAND IN  
SOLVING CLIMATE CHANGE, GETTING  
AMERICA'S FINANCES STRAIGHT, AND  
MAKING MINCEMEAT OF TERRORISTS.

---



Rebecca Plymate

[www.art-dept.com](http://www.art-dept.com)

# Art Department



WE RESPECT THE MAN  
WHO STANDS AGAINST US  
MORE THAN THE ONE WHO  
STANDS FOR NOTHING.

MEN  
WHO STAND  
FOR SOMETHING  
HAVE BUILT  
CITIES,  
DEFEATED EVIL  
AND CREATED  
OPPORTUNITIES  
FOR ALL.



Rebecca Plymate

[www.art-dept.com](http://www.art-dept.com)

# Art Department



MasterCard® is reserving priceless  
New York experiences just for you.

Including VIP cooking demonstrations with Aarón Sánchez.




Learn more at [facebook.com/mastercard](https://facebook.com/mastercard) 

Offers may vary. Limited quantities, on a first come, first served basis. Certain restrictions and terms & conditions apply. See [mastercard.com/marketplace](https://mastercard.com/marketplace) for details. MasterCard, the MasterCard Brand Mark, Priceless and MasterCard MarketPlace are trademarks of MasterCard International Incorporated. ©2018 MasterCard

## Rebecca Plymate


[www.art-dept.com](http://www.art-dept.com)

# Art Department



MasterCard® is reserving priceless  
New York experiences just for you.

Including VIP cooking demonstrations with Marcus Samuelsson.




Learn more at [facebook.com/mastercard](https://facebook.com/mastercard) 

Offers may vary. Limited quantities, on a first come, first served basis. Certain restrictions and terms & conditions apply. See [mastercard.com/marketplace](https://mastercard.com/marketplace) for details. MasterCard, the MasterCard Brand Mark, Priceless and MasterCard MarketPlace are trademarks of MasterCard International Incorporated. ©2018 MasterCard

Rebecca Plymate


[www.art-dept.com](http://www.art-dept.com)


# Art Department



MasterCard® is reserving priceless  
New York experiences just for you.

Including VIP Jets seats.



Learn more at [facebook.com/mastercard](https://facebook.com/mastercard) 

Offers may vary. Limited quantities, on a first come, first served basis. Certain restrictions and terms & conditions apply. See [mastercard.com/newyork](https://mastercard.com/newyork). MasterCard, the MasterCard Brand Mark, Priceless and MasterCard MemberPlace are trademarks of MasterCard International Incorporated. ©2018 MasterCard. The New York Jets name and logo are registered trademarks of New York Jets LLC.

Rebecca Plymate

[www.art-dept.com](http://www.art-dept.com)

# Art Department

A man in a blue shirt and jeans is captured mid-air, playing a red electric guitar. He is positioned on a red carpet that is held up by several gold stanchions. The background is dark with a soft spotlight effect on the man.

MasterCard® is reserving priceless  
New York experiences just for you.

Including VIP concert seats.



Learn more at [facebook.com/mastercard](https://facebook.com/mastercard) 

Offers may vary. Limited quantities, on a first come, first served basis. Certain restrictions and terms & conditions apply. See [mastercard.com/marketplace](https://mastercard.com/marketplace). MasterCard, the MasterCard Brand Mark, Priceless and MasterCard MarketPlace are trademarks of MasterCard International Incorporated. ©2018 MasterCard

Rebecca Plymate

[www.art-dept.com](http://www.art-dept.com)