

# Art Department



Scott McMahan

[www.art-dept.com](http://www.art-dept.com)

# Art Department



Scott McMahan

[www.art-dept.com](http://www.art-dept.com)



# Art Department



Scott McMahan

[www.art-dept.com](http://www.art-dept.com)

# Art Department



Scott McMahan

[www.art-dept.com](http://www.art-dept.com)



# Art Department



Scott McMahan

[www.art-dept.com](http://www.art-dept.com)

# Art Department



Scott McMahan

[www.art-dept.com](http://www.art-dept.com)



# Art Department



Scott McMahan

[www.art-dept.com](http://www.art-dept.com)

# Art Department



Scott McMahan

[www.art-dept.com](http://www.art-dept.com)



# Art Department



Scott McMahan

[www.art-dept.com](http://www.art-dept.com)

# Art Department



Scott McMahan

[www.art-dept.com](http://www.art-dept.com)



# Art Department



Scott McMahan

[www.art-dept.com](http://www.art-dept.com)



# Art Department



STYLE

Notbook

2020  
**WINTER  
FASHION**  
PREVIEW

## Cool Days, Warm Nights

A subdued holiday season is the perfect excuse for these laid-back winter layers: classic wool sweaters, the return of the long-sleeve polo, and one damn good tweed blazer.

STYLING BY SCOTT MCMAHAN & ART DEPARTMENT, CREATIVE DIRECTION AND PRODUCTION BY VICTOR BIEBER, MOBILES, SHANE WICKER & THE SOCIETY MANAGEMENT, AND SHEILA TERESA & STATE MANAGEMENT, SASSEL, ATIRAH GOMBY BROOKLYN

Canali Armure Flat-front  
Wool Trousers and Blueberry  
Marl Turtleneck [\$530,  
\$695; [canali.com](http://canali.com)]; Dunhill  
Houndstooth Half Wrap  
Jacket [\$2,095; [dunhill.com](http://dunhill.com)]

photographs by GREG VAUGHAN

MEN'S JOURNAL

NOV/DEC 2020

025

## Scott McMahan

[www.art-dept.com](http://www.art-dept.com)



# Art Department



Scott McMahan

[www.art-dept.com](http://www.art-dept.com)



# Art Department



Scott McMahan

[www.art-dept.com](http://www.art-dept.com)

# Art Department



Scott McMahan

[www.art-dept.com](http://www.art-dept.com)



# Art Department



Scott McMahan

[www.art-dept.com](http://www.art-dept.com)



# Art Department



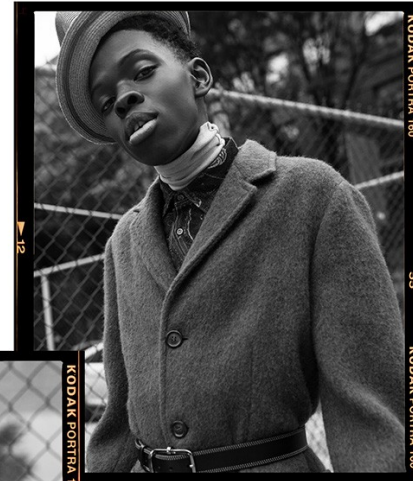
Scott McMahan

[www.art-dept.com](http://www.art-dept.com)

# Art Department



Left  
Coat & Shirt TIBI  
Right  
Coat, Shirt & Sweater ASPESI  
Hair ALBERTUS SWANEPOEL  
Bret H. BISONTE



Grooming SCOTT MCMAHAN at Art Department using Boy de Chanel  
Retoucher LESANA BENSON  
Model MALLE GUEYE at Fusion Models  
Special thanks to  
End of History - 548 1/2 Hudson Street New York NY  
Julius Bar - 159 W 10th St, New York, NY  
Ship and Ship - 204 Waverly Pl, New York, NY

## Scott McMahan

[www.art-dept.com](http://www.art-dept.com)



# Art Department



Scott McMahan

[www.art-dept.com](http://www.art-dept.com)



# Art Department



Scott McMahan

[www.art-dept.com](http://www.art-dept.com)

# Art Department



Scott McMahan

[www.art-dept.com](http://www.art-dept.com)



# Art Department



Scott McMahan

[www.art-dept.com](http://www.art-dept.com)



# Art Department



Scott McMahan

[www.art-dept.com](http://www.art-dept.com)



# Art Department



Scott McMahan

[www.art-dept.com](http://www.art-dept.com)



# Art Department



Scott McMahan

[www.art-dept.com](http://www.art-dept.com)

# Art Department



Scott McMahan

[www.art-dept.com](http://www.art-dept.com)



# Art Department



Scott McMahan

[www.art-dept.com](http://www.art-dept.com)

# Art Department



Scott McMahan

[www.art-dept.com](http://www.art-dept.com)



# Art Department



Scott McMahan

[www.art-dept.com](http://www.art-dept.com)

# Art Department



Scott McMahan

[www.art-dept.com](http://www.art-dept.com)



# Art Department



Scott McMahan

[www.art-dept.com](http://www.art-dept.com)

# Art Department



Scott McMahan

[www.art-dept.com](http://www.art-dept.com)



# Art Department



Scott McMahan

[www.art-dept.com](http://www.art-dept.com)

# Art Department

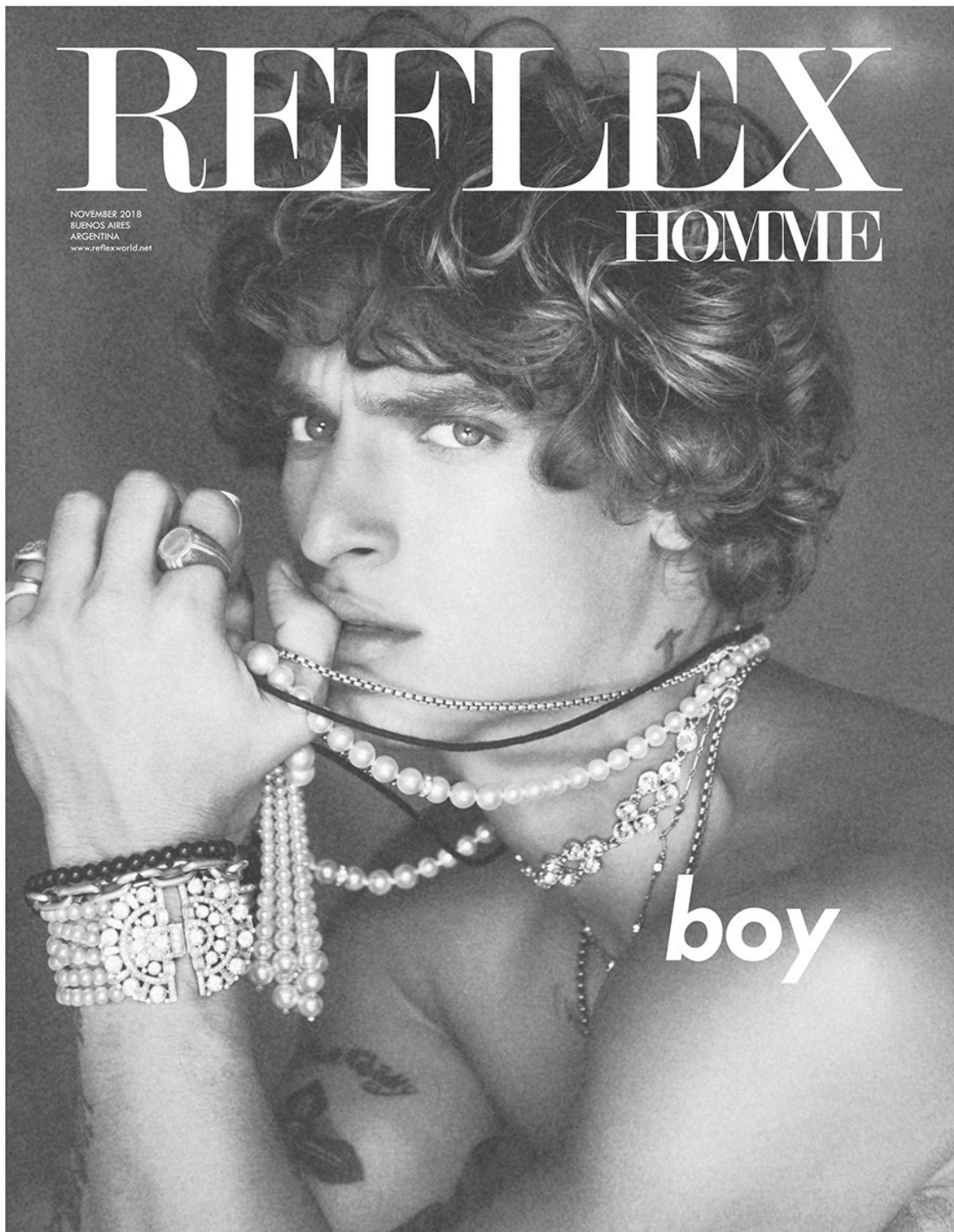


Scott McMahan

[www.art-dept.com](http://www.art-dept.com)



# Art Department



# REFLEX

NOVEMBER 2018  
BUENOS AIRES  
ARGENTINA  
[www.reflex-world.net](http://www.reflex-world.net)

## HOMME

boy

## Scott McMahan

[www.art-dept.com](http://www.art-dept.com)

# Art Department



Scott McMahan

[www.art-dept.com](http://www.art-dept.com)



# Art Department



Scott McMahan

[www.art-dept.com](http://www.art-dept.com)

# Art Department



Scott McMahan

[www.art-dept.com](http://www.art-dept.com)



# Art Department



Scott McMahan

[www.art-dept.com](http://www.art-dept.com)

# Art Department



Scott McMahan

[www.art-dept.com](http://www.art-dept.com)



# Art Department



Scott McMahan

[www.art-dept.com](http://www.art-dept.com)

# Art Department



Scott McMahan

[www.art-dept.com](http://www.art-dept.com)



# Art Department



Scott McMahan

[www.art-dept.com](http://www.art-dept.com)

# Art Department



Scott McMahan

[www.art-dept.com](http://www.art-dept.com)



# Art Department



Scott McMahan

[www.art-dept.com](http://www.art-dept.com)



# Art Department



Scott McMahan

[www.art-dept.com](http://www.art-dept.com)



# Art Department



Scott McMahan

[www.art-dept.com](http://www.art-dept.com)



# Art Department



Scott McMahan

[www.art-dept.com](http://www.art-dept.com)



# Art Department



Scott McMahan

[www.art-dept.com](http://www.art-dept.com)

# Art Department



Scott McMahan

[www.art-dept.com](http://www.art-dept.com)



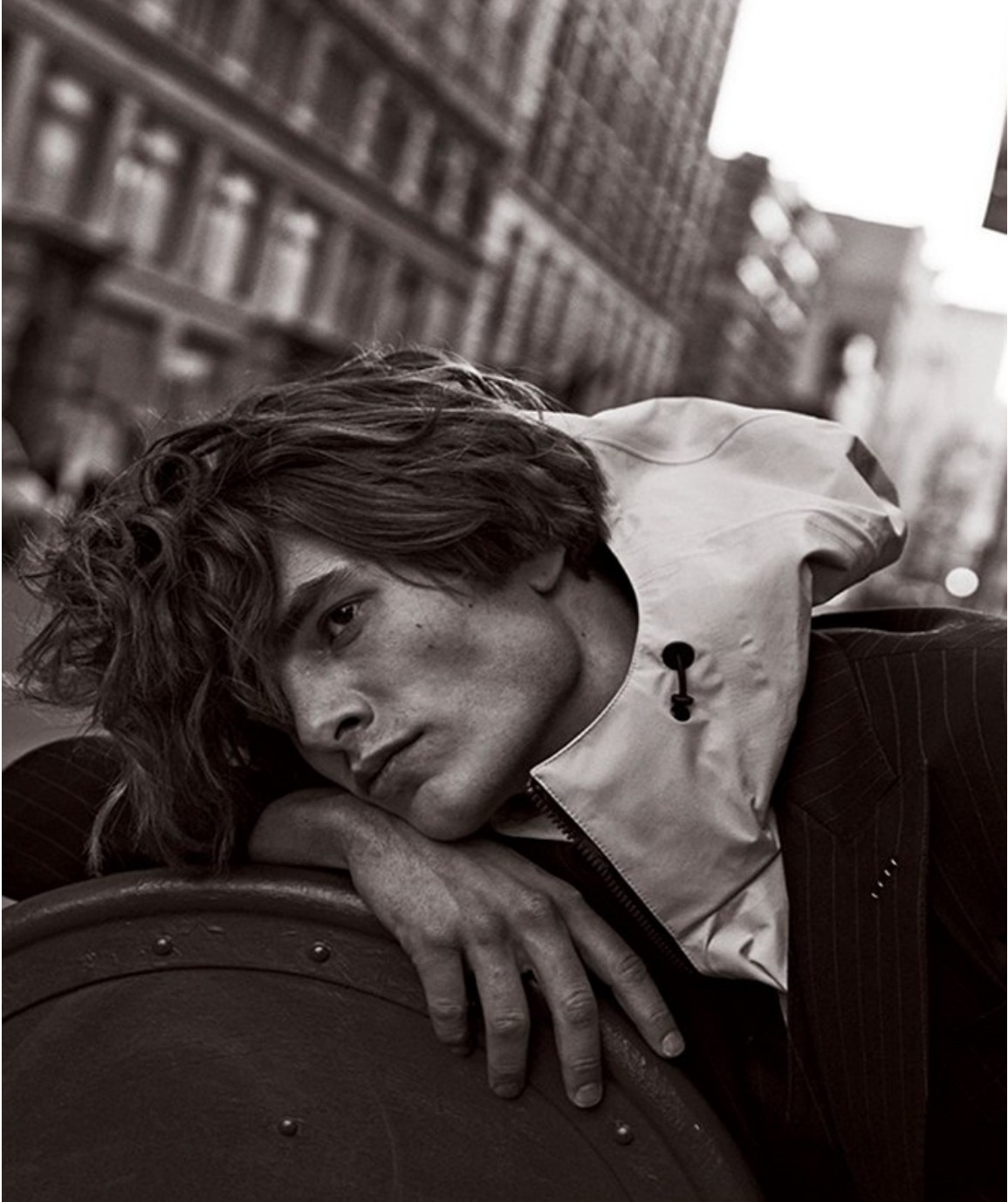
# Art Department



Scott McMahan

[www.art-dept.com](http://www.art-dept.com)

# Art Department



Scott McMahan

[www.art-dept.com](http://www.art-dept.com)



# Art Department



Scott McMahan

[www.art-dept.com](http://www.art-dept.com)

# Art Department



Scott McMahan

[www.art-dept.com](http://www.art-dept.com)



# Art Department



Scott McMahan

[www.art-dept.com](http://www.art-dept.com)

# Art Department



Blazer by **TALLIA ORANGE**  
Shirt by **SACAI**  
Leather trousers by **LINDER**

Alexey Galetskiy Productions  
Model: Inde Mace at Wilhelmina  
Grooming by Scott McMahan at Kate  
Ryan inc. using Tom Ford Men  
Set design by Ryan Fahey at AGPNYC  
Photo Assistant: Alvin Wong

## Scott McMahan

[www.art-dept.com](http://www.art-dept.com)



# Art Department



Scott McMahan

[www.art-dept.com](http://www.art-dept.com)

# Art Department



Scott McMahan

[www.art-dept.com](http://www.art-dept.com)



# Art Department



Scott McMahan

[www.art-dept.com](http://www.art-dept.com)



# Art Department



Scott McMahan

[www.art-dept.com](http://www.art-dept.com)



# Art Department



Scott McMahan

[www.art-dept.com](http://www.art-dept.com)



# Art Department



Scott McMahan

[www.art-dept.com](http://www.art-dept.com)



# Art Department



Scott McMahan

[www.art-dept.com](http://www.art-dept.com)



# Art Department



Scott McMahan

[www.art-dept.com](http://www.art-dept.com)



# Art Department



Scott McMahan

[www.art-dept.com](http://www.art-dept.com)



# Art Department



Scott McMahan

[www.art-dept.com](http://www.art-dept.com)



# Art Department



НЕЙЛОНОВАЯ КУРТКА,  
СВИТШОТ ИЗ ХЛОПКА  
С ДЕТАЛЯМИ ИЗ НЕЙЛОНА,  
ХЛОПКОВОЕ ХУДИ  
С ДЕТАЛЯМИ ИЗ НЕЙЛОНА,  
ВСЕ MONCLER.

## Scott McMahan

[www.art-dept.com](http://www.art-dept.com)

# Art Department



Scott McMahan

[www.art-dept.com](http://www.art-dept.com)



# Art Department



Scott McMahan

[www.art-dept.com](http://www.art-dept.com)



# Art Department



Scott McMahan

[www.art-dept.com](http://www.art-dept.com)



# Art Department

ТРЕНЧ ИЗ ШЕРСТИ  
И ХЛОПКА, ФУТБОЛКА  
ИЗ ОЛНА И ХЛОПКА,  
БРЮКИ ИЗ ШЕРСТИ  
И ХЛОПКА, КОЖАНЫЙ  
РЕМЕНЬ, ВСЕ MICHAEL  
KORS; РУБАШКА ИЗ  
ВИСКОЗЫ И НЕЙЛОНА,  
BERLUTI.



МОДЕЛЬ: SEAN O'PRY@VNY MODELS  
ГРУМИНГ: SCOTT MCMAHAN@KATE RYAN INC  
КАСТИНГ: CHRISTIAN MESHESHA@X2  
PRODUCTION  
ТЕХНИЧЕСКОЕ ОБЕСПЕЧЕНИЕ: DAN ATTEO  
ДОСИТТЕР: NATALIA JHETE  
АССИСТЕНТЫ ФОТОГРАФА:  
FLETCHER ANSTIS, NATHAN CLUSS  
АССИСТЕНТ СТИЛИСТА: MARISA ELLISON  
ПРОДЮСЕР: KALINA KRABEL@A+ PRODUCTIONS

## Scott McMahan

[www.art-dept.com](http://www.art-dept.com)

# Art Department



Scott McMahan

[www.art-dept.com](http://www.art-dept.com)



# Art Department



Scott McMahan

[www.art-dept.com](http://www.art-dept.com)

# Art Department



Scott McMahan

[www.art-dept.com](http://www.art-dept.com)



# Art Department



Scott McMahan

[www.art-dept.com](http://www.art-dept.com)



# Art Department



Scott McMahan

[www.art-dept.com](http://www.art-dept.com)



# Art Department



Scott McMahan

[www.art-dept.com](http://www.art-dept.com)

# Art Department



Scott McMahan

[www.art-dept.com](http://www.art-dept.com)



# Art Department



Scott McMahan

[www.art-dept.com](http://www.art-dept.com)

# Art Department



Scott McMahan

[www.art-dept.com](http://www.art-dept.com)



# Art Department



Scott McMahan

[www.art-dept.com](http://www.art-dept.com)

# Art Department



Scott McMahan

[www.art-dept.com](http://www.art-dept.com)



# Art Department



Scott McMahan

[www.art-dept.com](http://www.art-dept.com)

# Art Department



Scott McMahan

[www.art-dept.com](http://www.art-dept.com)



# Art Department



Scott McMahan

[www.art-dept.com](http://www.art-dept.com)

# Art Department



Scott McMahan

[www.art-dept.com](http://www.art-dept.com)



# Art Department



Scott McMahan

[www.art-dept.com](http://www.art-dept.com)



# Art Department



Scott McMahan

[www.art-dept.com](http://www.art-dept.com)



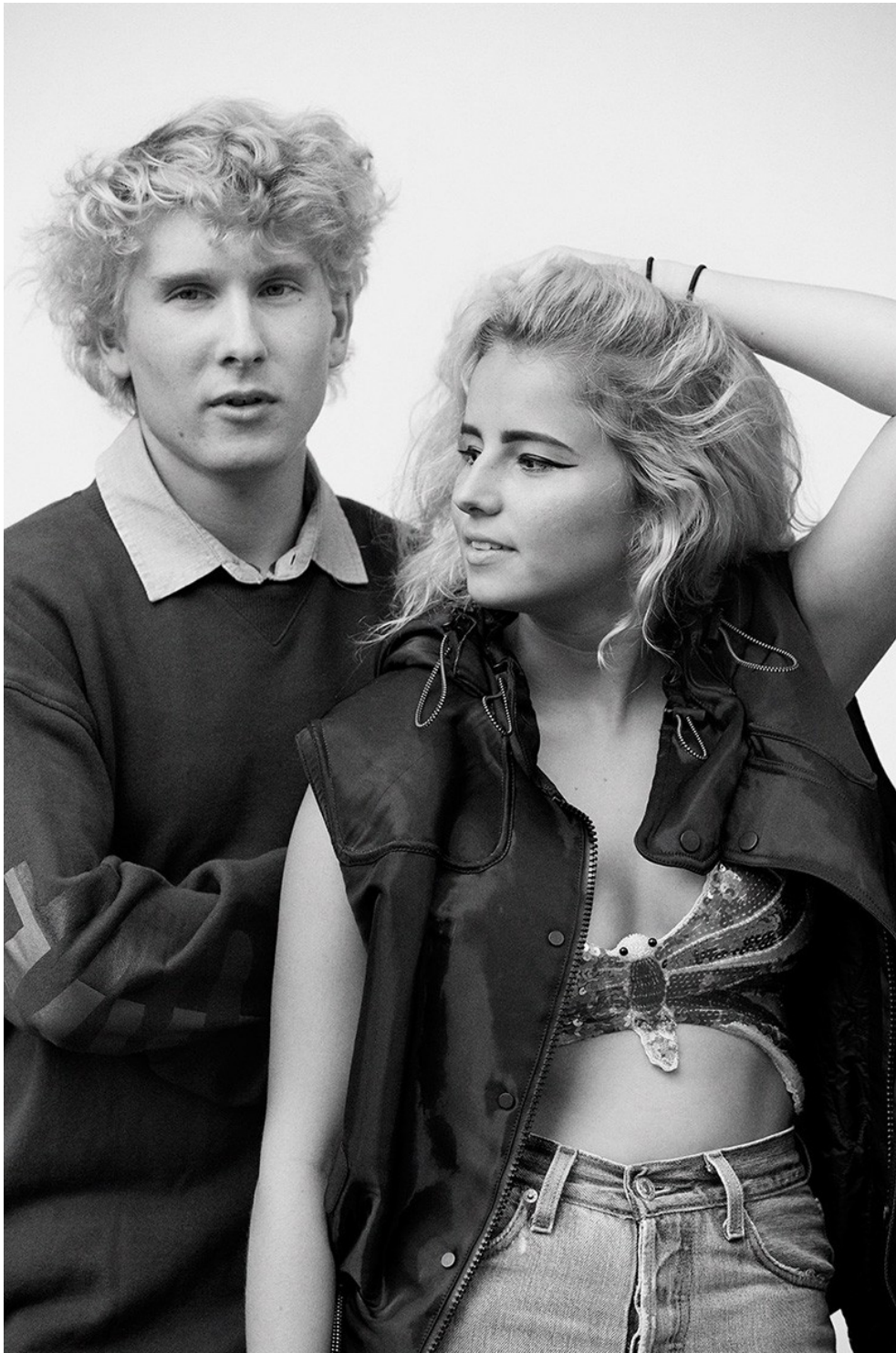
# Art Department



Scott McMahan

[www.art-dept.com](http://www.art-dept.com)

# Art Department



Scott McMahan

[www.art-dept.com](http://www.art-dept.com)



# Art Department



Scott McMahan

[www.art-dept.com](http://www.art-dept.com)

# Art Department



Scott McMahan

[www.art-dept.com](http://www.art-dept.com)



# Art Department



Scott McMahan

[www.art-dept.com](http://www.art-dept.com)

# Art Department



Scott McMahan

[www.art-dept.com](http://www.art-dept.com)



# Art Department



Scott McMahan

[www.art-dept.com](http://www.art-dept.com)

# Art Department



Scott McMahan

[www.art-dept.com](http://www.art-dept.com)



# Art Department



Scott McMahan

[www.art-dept.com](http://www.art-dept.com)

# Art Department



Scott McMahan

[www.art-dept.com](http://www.art-dept.com)



# Art Department



Scott McMahan

[www.art-dept.com](http://www.art-dept.com)

# Art Department



Scott McMahan

[www.art-dept.com](http://www.art-dept.com)



# Art Department



Scott McMahan

[www.art-dept.com](http://www.art-dept.com)



# Art Department



Scott McMahan



# Art Department



Scott McMahan

[www.art-dept.com](http://www.art-dept.com)

# Art Department



Scott McMahan

[www.art-dept.com](http://www.art-dept.com)



# Art Department



Scott McMahan

[www.art-dept.com](http://www.art-dept.com)

# Art Department



Scott McMahan

[www.art-dept.com](http://www.art-dept.com)



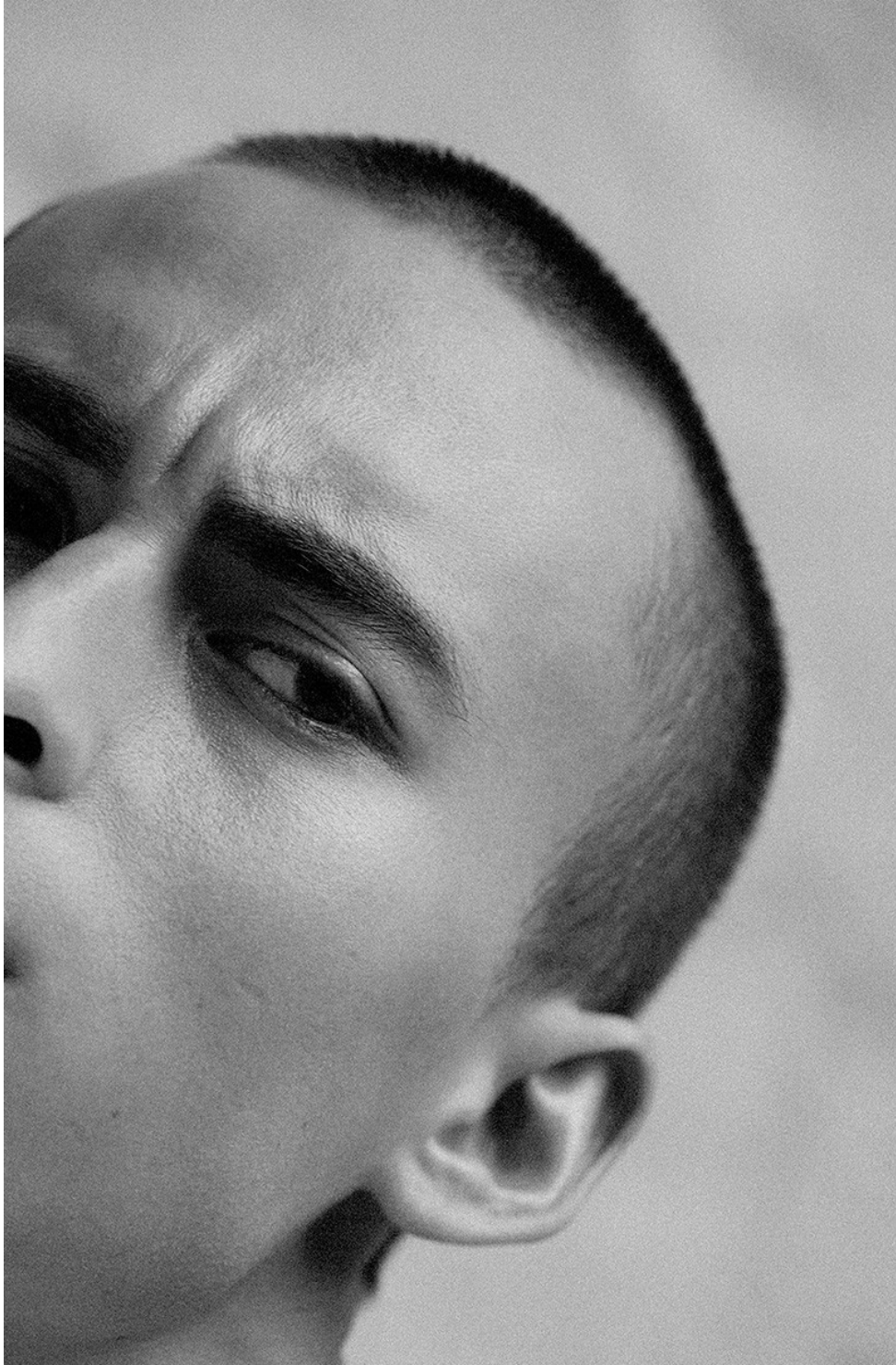
# Art Department



Scott McMahan

[www.art-dept.com](http://www.art-dept.com)

# Art Department



Scott McMahan

[www.art-dept.com](http://www.art-dept.com)



# Art Department



Scott McMahan

[www.art-dept.com](http://www.art-dept.com)

# Art Department



Scott McMahan

[www.art-dept.com](http://www.art-dept.com)



# Art Department



Scott McMahan

[www.art-dept.com](http://www.art-dept.com)

# Art Department



SWEATER PUBLIC SCHOOL,  
VESTE SCHOTT,  
PANTALON  
ET COLLIERS COACH

PAGE DROITE:  
FOULARD HERMÈS,  
MAILLE MICHAEL KORS,  
VESTE EN CUIR  
RAG & BONE

76

ARQUELO

N° 16

## Scott McMahan

[www.art-dept.com](http://www.art-dept.com)



# Art Department

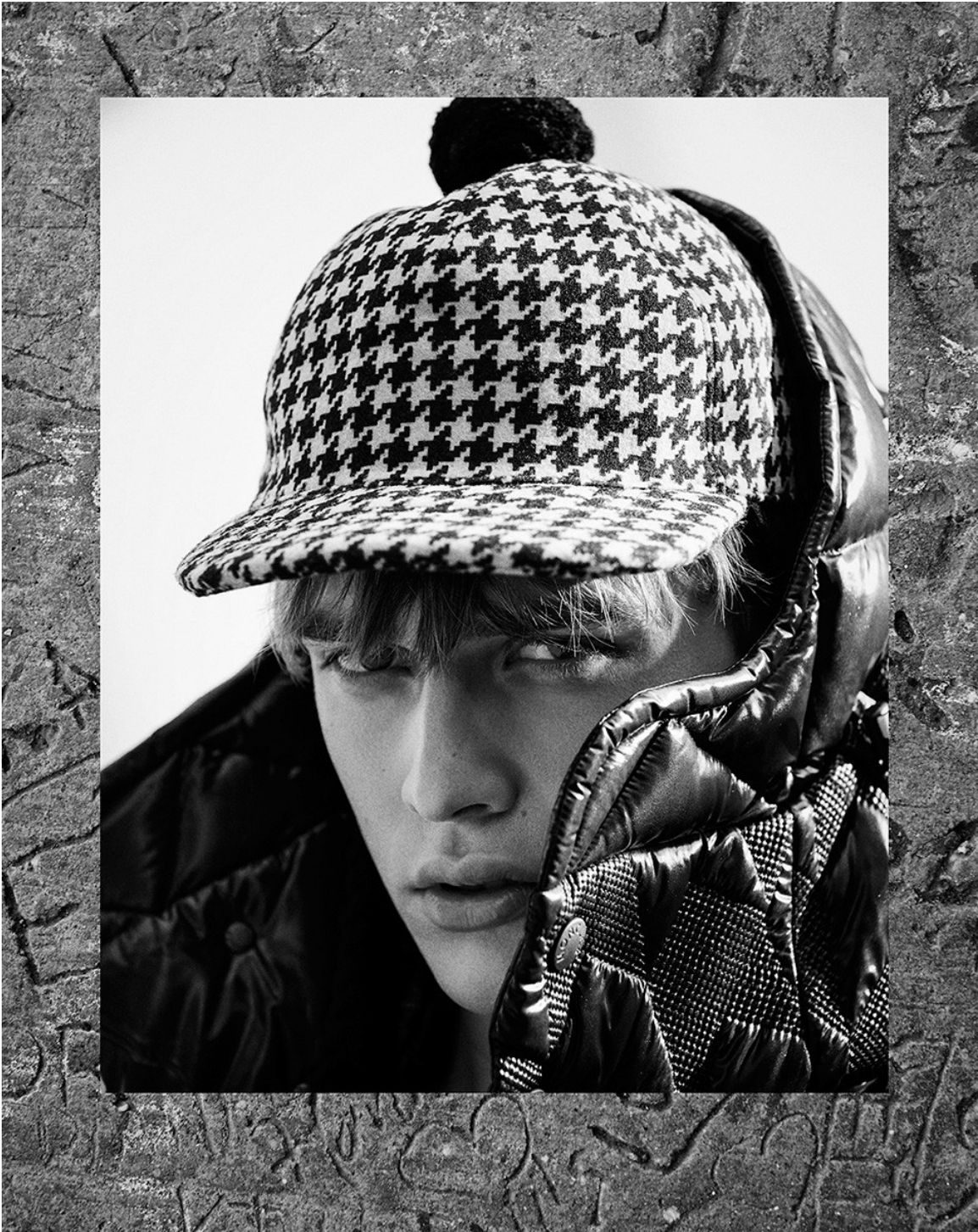


Scott McMahan

[www.art-dept.com](http://www.art-dept.com)



# Art Department



Scott McMahan

[www.art-dept.com](http://www.art-dept.com)



# Art Department



Scott McMahan

[www.art-dept.com](http://www.art-dept.com)

# Art Department



Scott McMahan

[www.art-dept.com](http://www.art-dept.com)



# Art Department



Scott McMahan

[www.art-dept.com](http://www.art-dept.com)



# Art Department



Scott McMahan

[www.art-dept.com](http://www.art-dept.com)



# Art Department



Scott McMahan

[www.art-dept.com](http://www.art-dept.com)

# Art Department



Scott McMahan

[www.art-dept.com](http://www.art-dept.com)



# Art Department



Scott McMahan

[www.art-dept.com](http://www.art-dept.com)



# Art Department



Scott McMahan

[www.art-dept.com](http://www.art-dept.com)



# Art Department



Scott McMahan

[www.art-dept.com](http://www.art-dept.com)

# Art Department



Scott McMahan

[www.art-dept.com](http://www.art-dept.com)



# Art Department

PHOTOGRAPHED EXCLUSIVELY FOR PULSE  
ON LOCATION AT RED HOOK LABS IN BROOKLYN  
GROOMER: SCOTT McMAHAN  
V-ROD MUSCLE 2016 PROVIDED BY  
HARLEY-DAVIDSON OF NEW YORK CITY



Scott McMahan

[www.art-dept.com](http://www.art-dept.com)

# Art Department



Scott McMahan

[www.art-dept.com](http://www.art-dept.com)



# Art Department



Scott McMahan

[www.art-dept.com](http://www.art-dept.com)

# Art Department



Scott McMahan

[www.art-dept.com](http://www.art-dept.com)



# Art Department



Scott McMahan

[www.art-dept.com](http://www.art-dept.com)

# Art Department



Scott McMahan

[www.art-dept.com](http://www.art-dept.com)



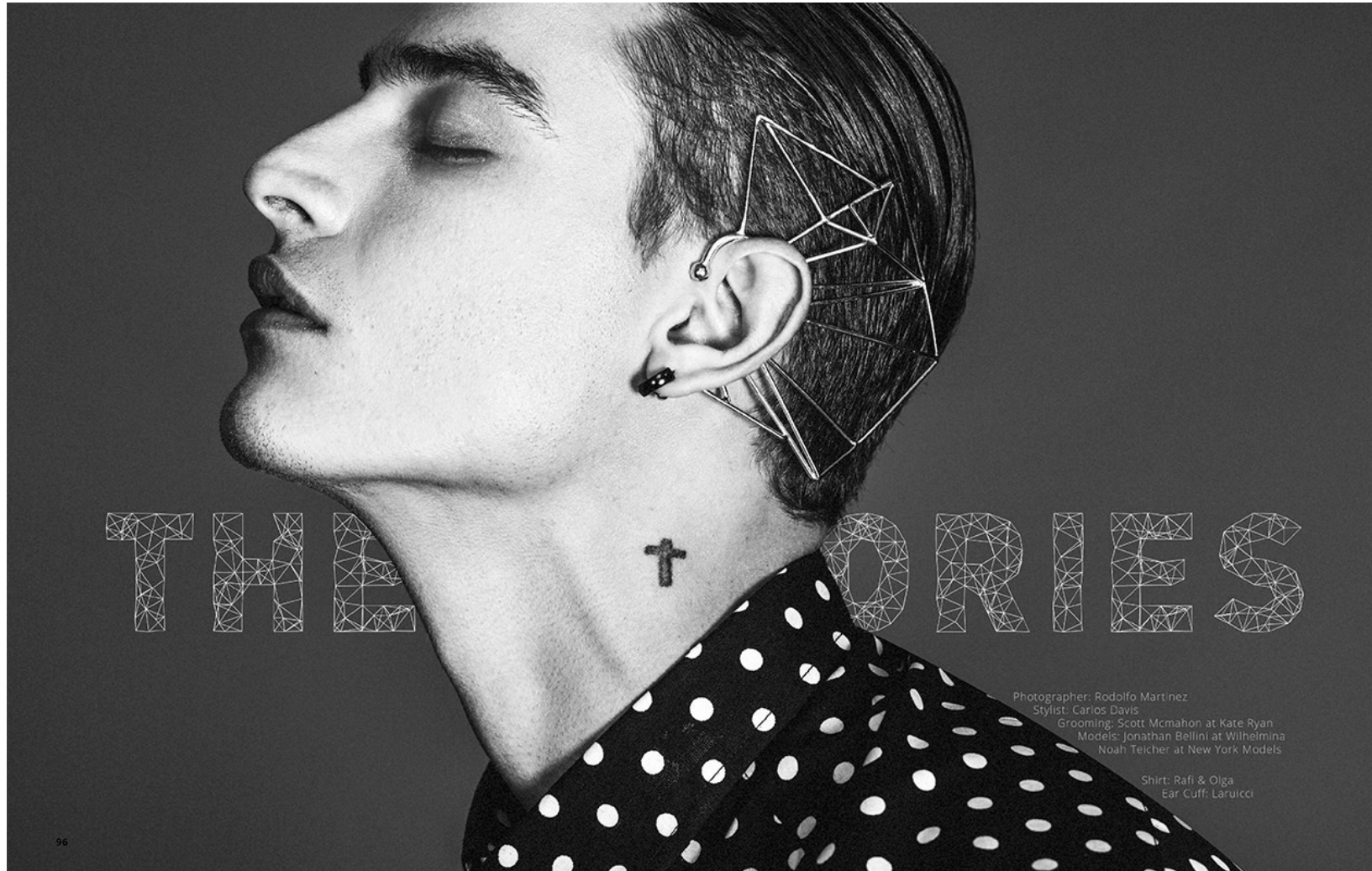
# Art Department



Scott McMahan

[www.art-dept.com](http://www.art-dept.com)

# Art Department



Scott McMahan

[www.art-dept.com](http://www.art-dept.com)



# Art Department



Scott McMahan

[www.art-dept.com](http://www.art-dept.com)

# Art Department



Scott McMahan

[www.art-dept.com](http://www.art-dept.com)



# Art Department



Scott McMahan

[www.art-dept.com](http://www.art-dept.com)

# Art Department

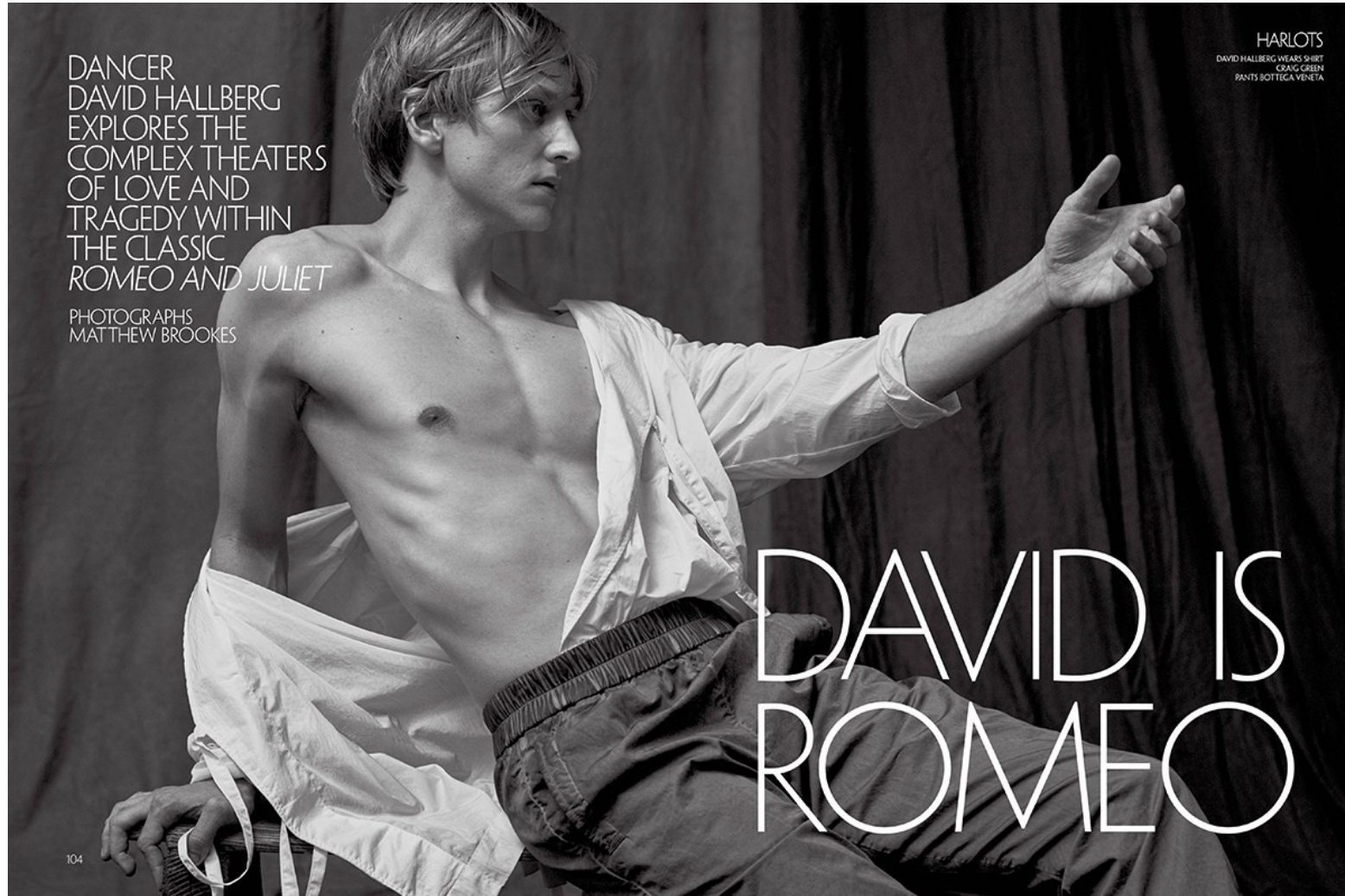


Scott McMahan

[www.art-dept.com](http://www.art-dept.com)



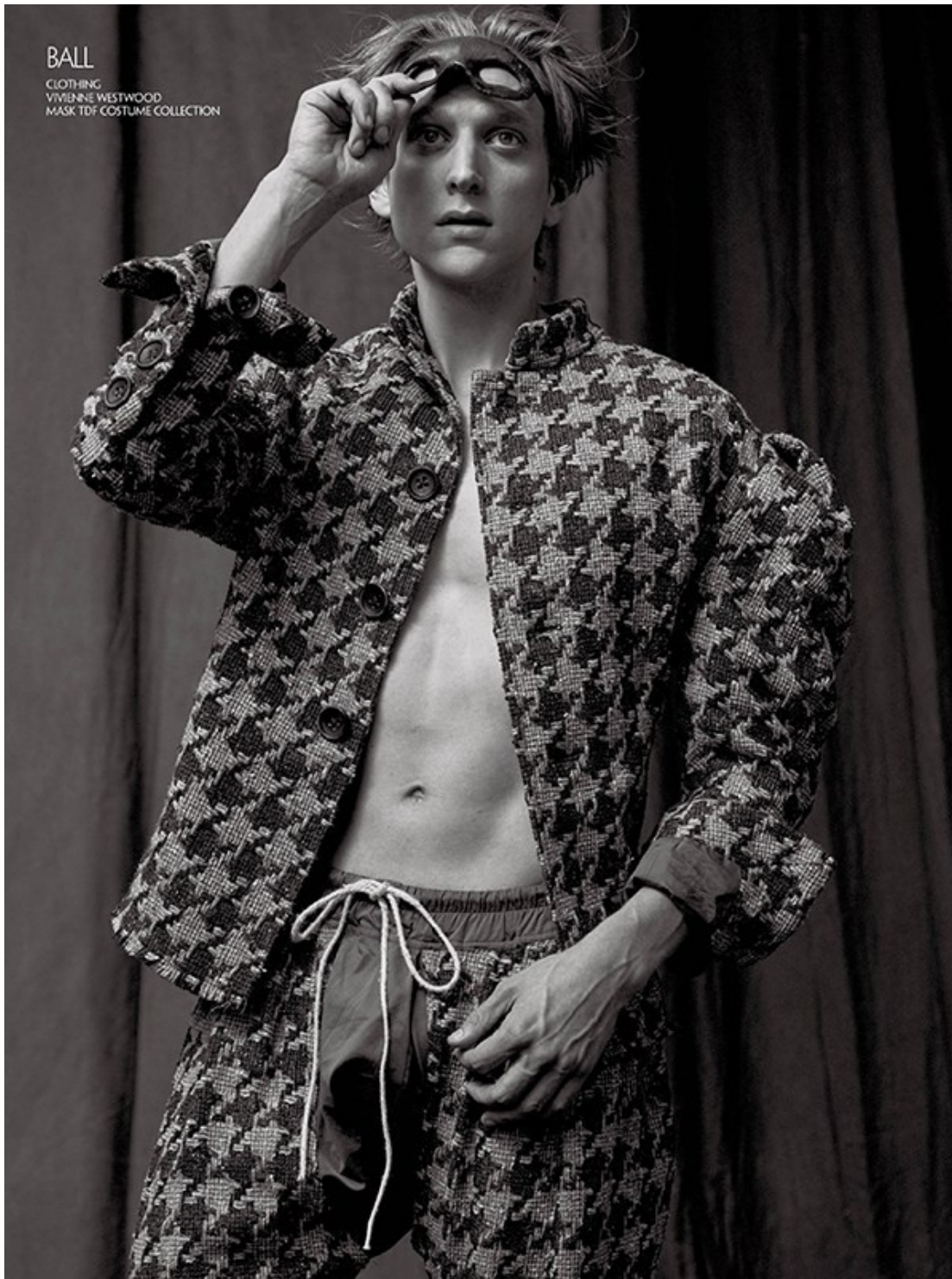
# Art Department



Scott McMahan

[www.art-dept.com](http://www.art-dept.com)

# Art Department

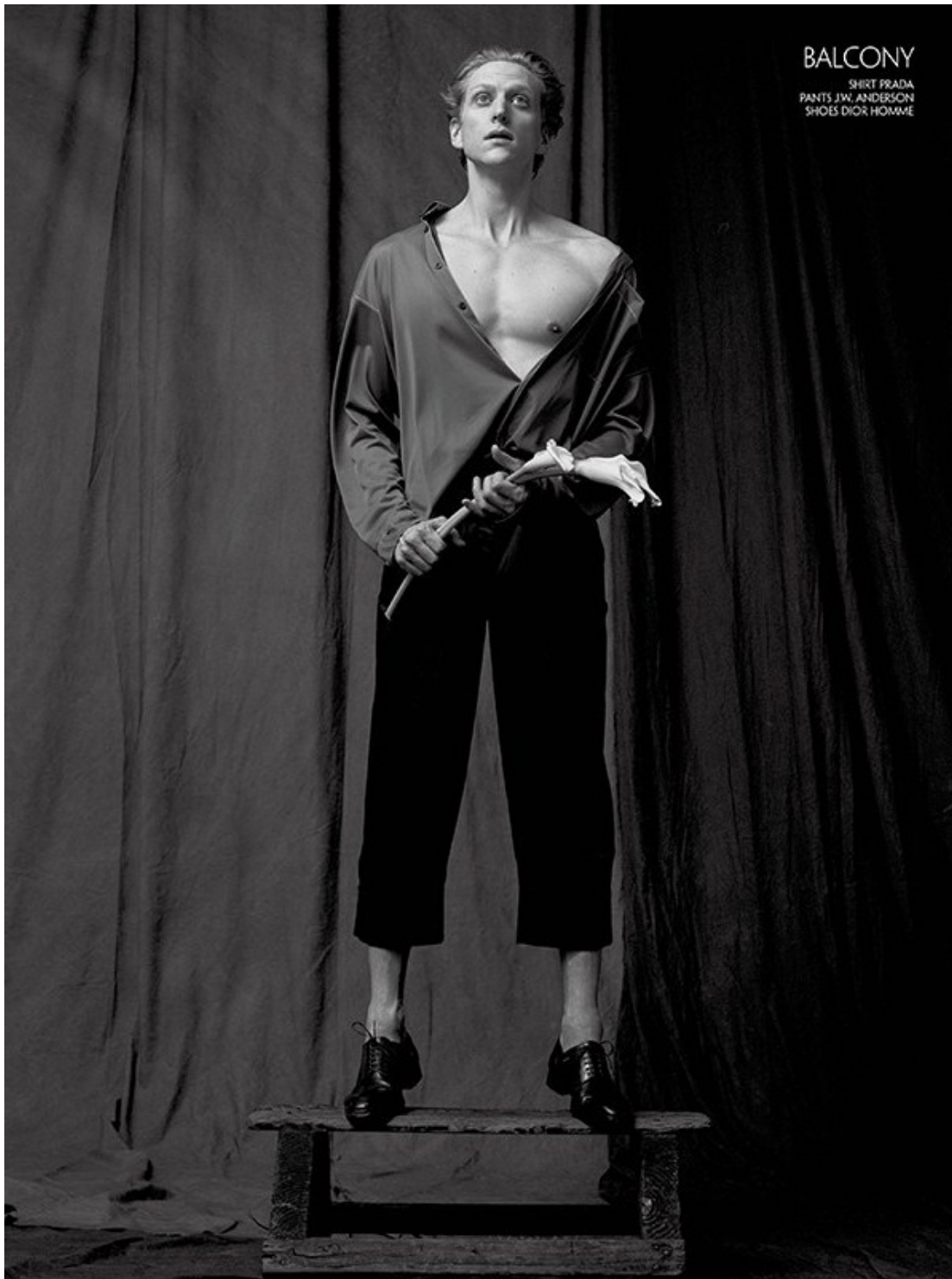


Scott McMahan

[www.art-dept.com](http://www.art-dept.com)



# Art Department



Scott McMahan

[www.art-dept.com](http://www.art-dept.com)

# Art Department



Scott McMahan

[www.art-dept.com](http://www.art-dept.com)



# Art Department



Scott McMahan

[www.art-dept.com](http://www.art-dept.com)

# Art Department



Scott McMahan

[www.art-dept.com](http://www.art-dept.com)



# Art Department



Scott McMahan

[www.art-dept.com](http://www.art-dept.com)

# Art Department



Scott McMahan

[www.art-dept.com](http://www.art-dept.com)



# Art Department



Scott McMahan

[www.art-dept.com](http://www.art-dept.com)

# Art Department



*Marjan Top Calvin Klein Jeans Shorts Erro Scarf John Varvatos Andre Blazer McQ By Alexander McQueen Dress Hood By Air Boots Balenciaga Phillip Top Calvin Klein Jeans Trousers Philipp Plein Boots Hood By Air Chris Sweater Tripp NYC Trousers Saint Laurent Boots Saint Laurent*

Outsiders  
Photographer Michael Schwartz Creative Director Uffe Buchard Fashion  
Editor Gro Curtis - WM Artist Management, NY Make-up Scott McMahan  
- Kate Ryan, NY Hair Andre Gunn - Honey Artists, NYC Photographer  
Assistants Krystallynne Gonzalez, Evgeny Popov, and Amanda Yanez  
Fashion Assistants Julianna Bursack and Aitik Henderson Talents Marjan  
Jonkman - 1 Management Andre V - Ford Talents Chris D - VNY Model  
Management Philip - Soul Artist Management Special Thanks Dan Rao  
Fast Ashley EQ Rentals

## Scott McMahan

[www.art-dept.com](http://www.art-dept.com)



# Art Department



Scott McMahan

[www.art-dept.com](http://www.art-dept.com)

# Art Department



Scott McMahan

[www.art-dept.com](http://www.art-dept.com)



# Art Department



denim shirt  
and jacket  
Dsquared2  
apron  
Nadie Jeans

Scott McMahan

[www.art-dept.com](http://www.art-dept.com)

# Art Department



Scott McMahan

[www.art-dept.com](http://www.art-dept.com)



# Art Department



Scott McMahan

[www.art-dept.com](http://www.art-dept.com)

# Art Department



Scott McMahan

[www.art-dept.com](http://www.art-dept.com)



# Art Department



Scott McMahan

[www.art-dept.com](http://www.art-dept.com)

# Art Department



Scott McMahan

[www.art-dept.com](http://www.art-dept.com)



# Art Department



*before the storm*

*photography: cyril matu  
fashion: seymour glass*

© 2011 Scott McMahán Collection  
Trotter & General Idea

## Scott McMahan

[www.art-dept.com](http://www.art-dept.com)

# Art Department



Scott McMahan

[www.art-dept.com](http://www.art-dept.com)



# Art Department



*Jacket / Polo Ralph Lauren  
Shirt / Dolce & Gabbana*

## Scott McMahan

[www.art-dept.com](http://www.art-dept.com)

# Art Department



Scott McMahan

[www.art-dept.com](http://www.art-dept.com)



# Art Department



Scott McMahan

[www.art-dept.com](http://www.art-dept.com)

# Art Department



Scott McMahan

[www.art-dept.com](http://www.art-dept.com)



# Art Department



Scott McMahan

[www.art-dept.com](http://www.art-dept.com)

# Art Department



Scott McMahan

[www.art-dept.com](http://www.art-dept.com)



# Art Department



## THE HOMECOMING

PHOTOGRAPHER *Michael Schwartz*

FASHION EDITOR *Julie Rappia / Jodi Ross*

FEATURING *Matthew Terry / Ford Models*

ART DIRECTION *Sam Dreyfus*

GROOMING *Scott McMahan / Kate Ryan Inc.*

PHOTOGRAPHER ASSISTANTS *Nirvana Nilson, Colby Edwards & Amanda Yates*

FASHION ASSISTANT *Gerardo Maury Correa*

PRODUCTION *Go It Productions*

PRODUCTION ON SITE *Great Honey*

*Special thanks to the Terry family of the city of Ocean City, New Jersey*

## Scott McMahan

[www.art-dept.com](http://www.art-dept.com)

# Art Department



ALL CLOTHES Oscar



ALL CLOTHES Prada  
SHOES Salvatore Ferragamo

## Scott McMahan

[www.art-dept.com](http://www.art-dept.com)



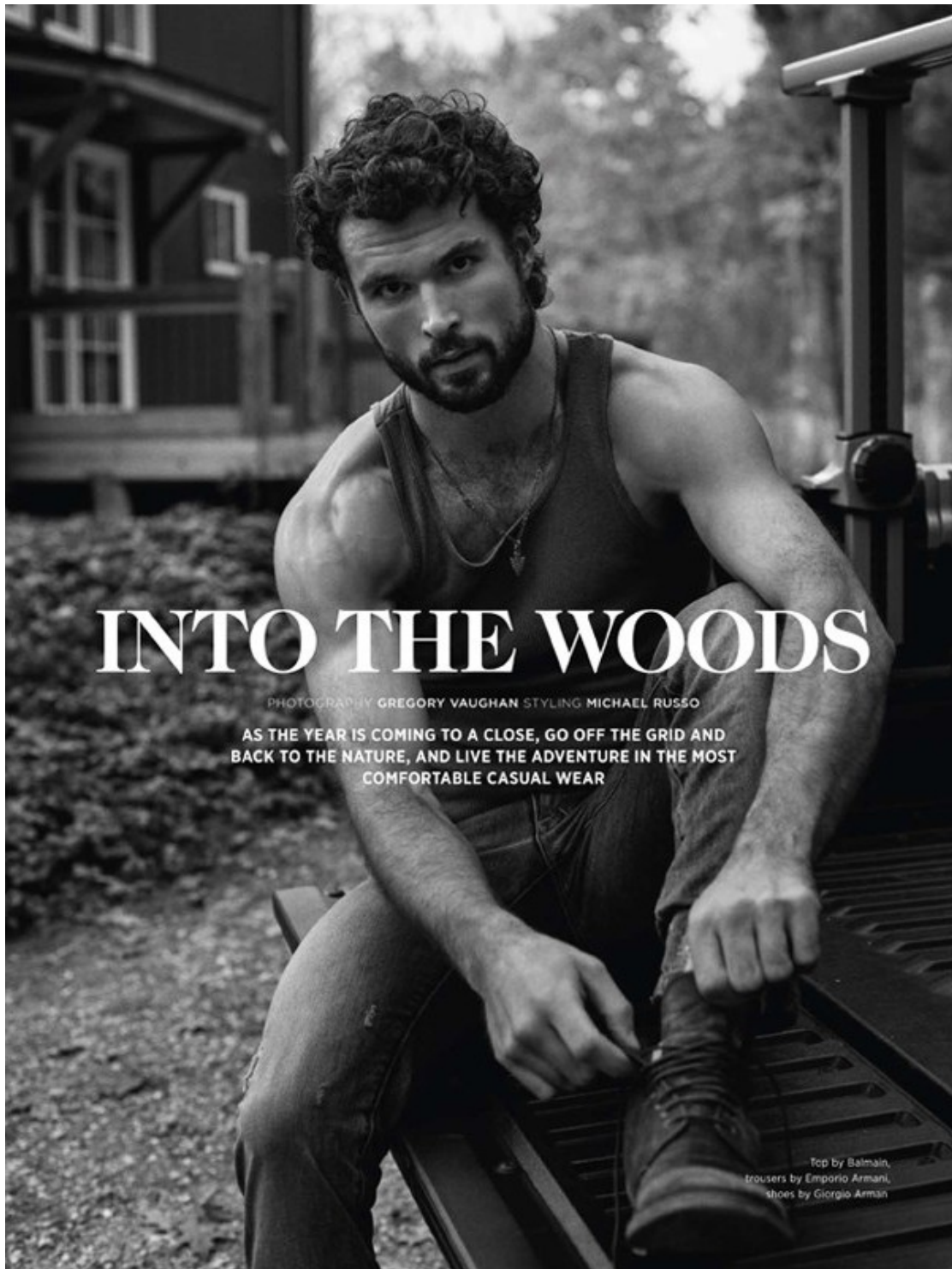
# Art Department



Scott McMahan

[www.art-dept.com](http://www.art-dept.com)

# Art Department



## INTO THE WOODS

PHOTOGRAPHY GREGORY VAUGHAN STYLING MICHAEL RUSSO

AS THE YEAR IS COMING TO A CLOSE, GO OFF THE GRID AND  
BACK TO THE NATURE, AND LIVE THE ADVENTURE IN THE MOST  
COMFORTABLE CASUAL WEAR

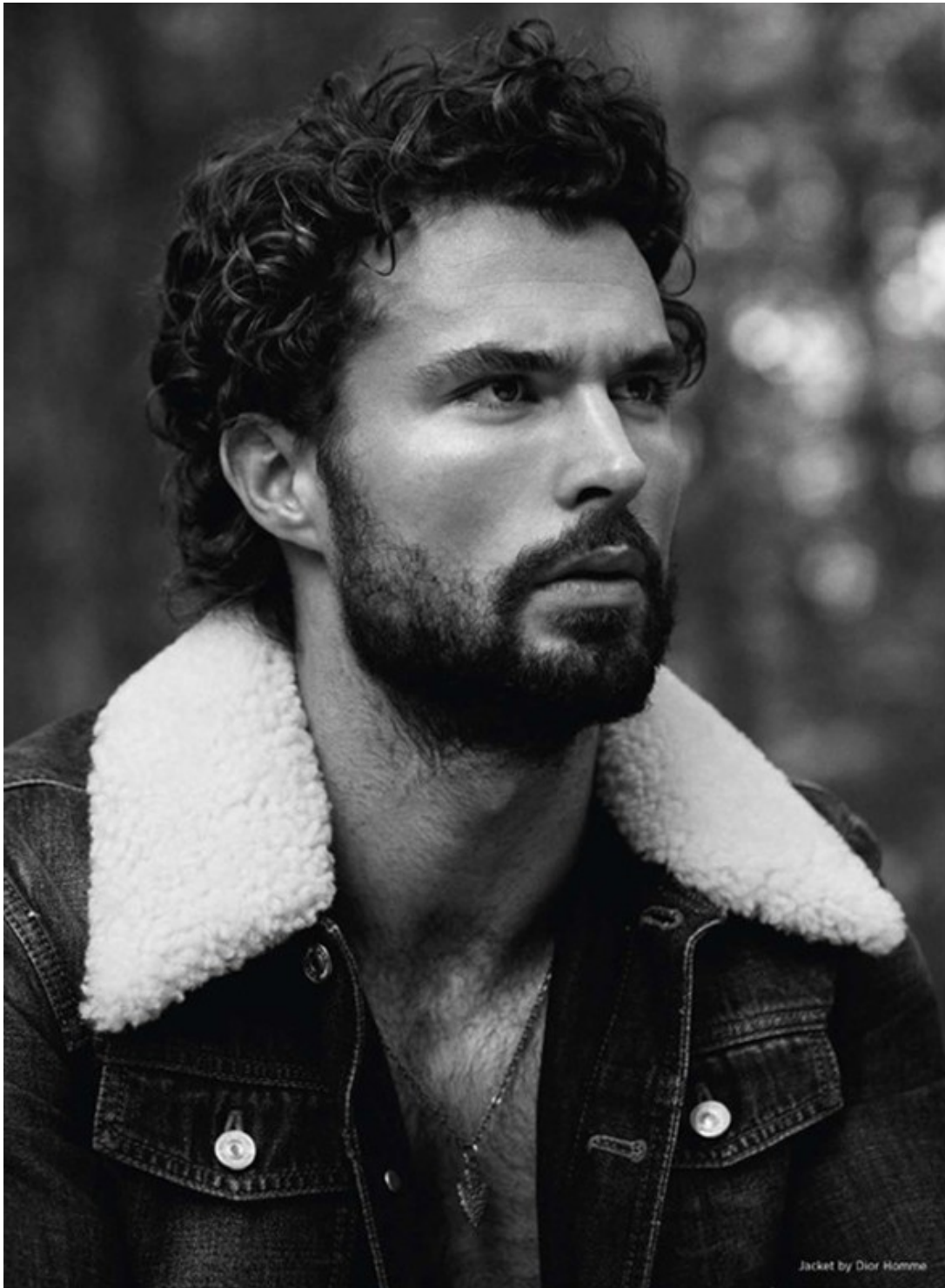
Top by Balmain,  
trousers by Emporio Armani,  
shoes by Giorgio Armani

## Scott McMahan

[www.art-dept.com](http://www.art-dept.com)



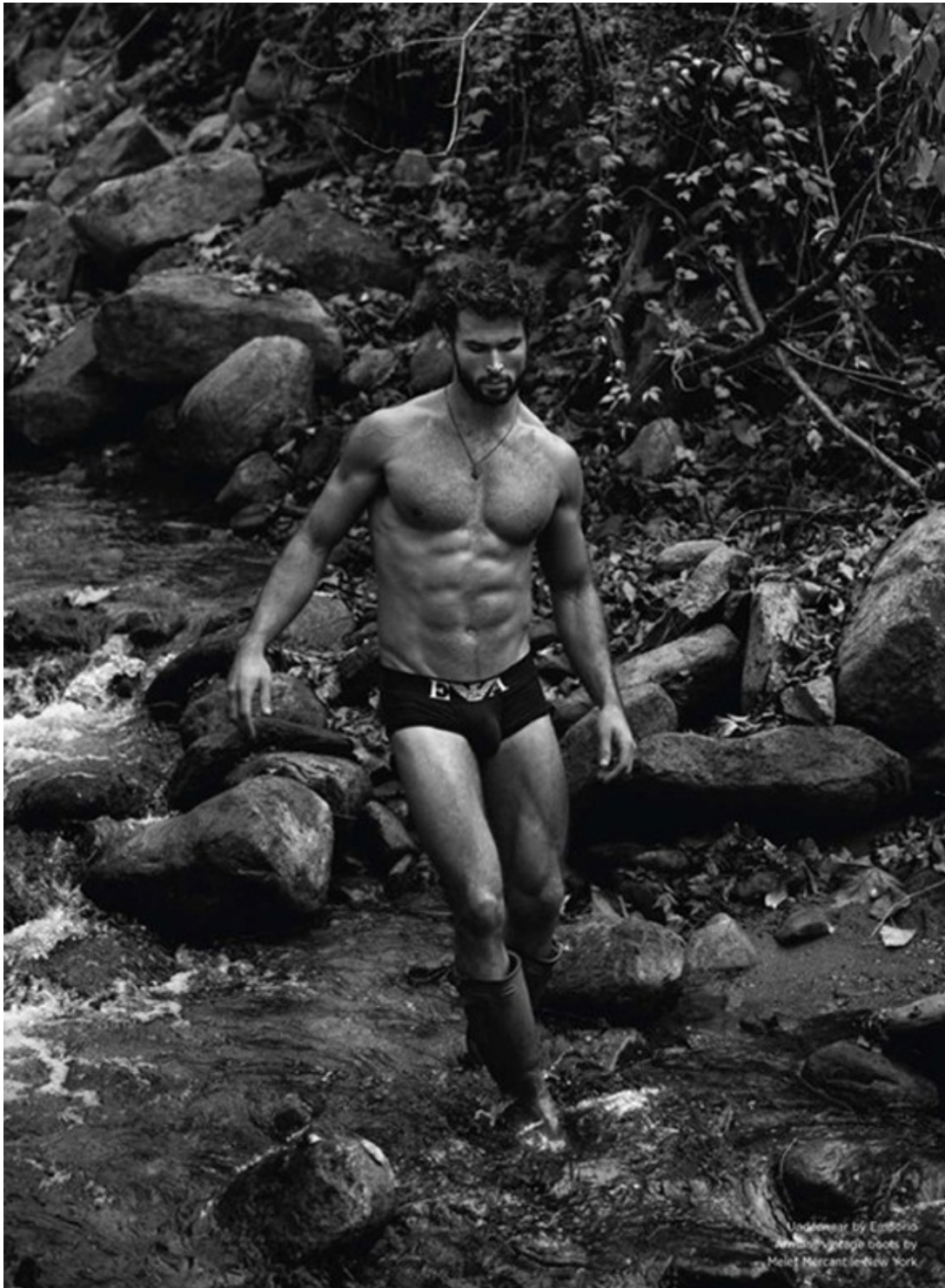
# Art Department



Scott McMahan

[www.art-dept.com](http://www.art-dept.com)

# Art Department



Scott McMahan

[www.art-dept.com](http://www.art-dept.com)



# Art Department



Scott McMahan

[www.art-dept.com](http://www.art-dept.com)

# Art Department



Scott McMahan

[www.art-dept.com](http://www.art-dept.com)



# Art Department



Scott McMahan

[www.art-dept.com](http://www.art-dept.com)

# Art Department



Scott McMahan

[www.art-dept.com](http://www.art-dept.com)



# Art Department



Scott McMahan

[www.art-dept.com](http://www.art-dept.com)

# Art Department



Scott McMahan

[www.art-dept.com](http://www.art-dept.com)



# Art Department



Scott McMahan

[www.art-dept.com](http://www.art-dept.com)

# Art Department



Scott McMahan

[www.art-dept.com](http://www.art-dept.com)



# Art Department



Coat, suit, shirt, tie and  
cuff by **Hugo Boss**.  
Classic watch with  
alligator white gold  
with alligator leather  
strap by **Breguet**

OPPOSITE PAGE:  
Suit, shirt, tie and scarf  
by **Ermesegildo  
Zegna**. Bag by  
**Saittoni**. Classic  
"Hora Marc" watch  
with alligator leather  
strap by **Breguet**

## Scott McMahan

[www.art-dept.com](http://www.art-dept.com)

# Art Department



CLEAN  
SLATE

PHOTOGRAPHY GREGORY VAUGHAN STYLING CARLTON JONES

TAKE YOUR SPRING WARDROBE UP A NOTCH BY  
ADDING PIECES IN WHITE AND NEUTRAL HUES.  
THEY EXUDE FRESHNESS AND LIGHTNESS—TWO  
INGREDIENTS OF THE SEASON'S FOREFRONT STYLE

Jumpsuit by Agnes B.  
shoes by Christian Louboutin for E. Tautz

## Scott McMahan

[www.art-dept.com](http://www.art-dept.com)



# Art Department



Scott McMahan

[www.art-dept.com](http://www.art-dept.com)

# Art Department



Scott McMahan

[www.art-dept.com](http://www.art-dept.com)



# Art Department



Scott McMahan

[www.art-dept.com](http://www.art-dept.com)

# Art Department



Scott McMahan

[www.art-dept.com](http://www.art-dept.com)



# Art Department



Scott McMahan

[www.art-dept.com](http://www.art-dept.com)

# Art Department



Scott McMahan

[www.art-dept.com](http://www.art-dept.com)



# Art Department



Scott McMahan

[www.art-dept.com](http://www.art-dept.com)

# Art Department



Scott McMahan

[www.art-dept.com](http://www.art-dept.com)



# Art Department



## Intense Power

photography Arnaldo Anaya Lucca at Defacto Inc  
grooming Scott McMahan at Kate Ryan Inc for Tom Ford Men  
photography assistants Zack Zannini & Jordan Strong  
Digital Capture Patrick Kline at Versatile Studios  
All underwear Intense Power by Calvin Klein

models  
Austin Scoggin, Christian Hogue, Eian Scully,  
Trevor van Uden & Tyler Maher  
all at Soul Artist Mgmt, New York

## Scott McMahan

[www.art-dept.com](http://www.art-dept.com)

# Art Department



Scott McMahan

[www.art-dept.com](http://www.art-dept.com)



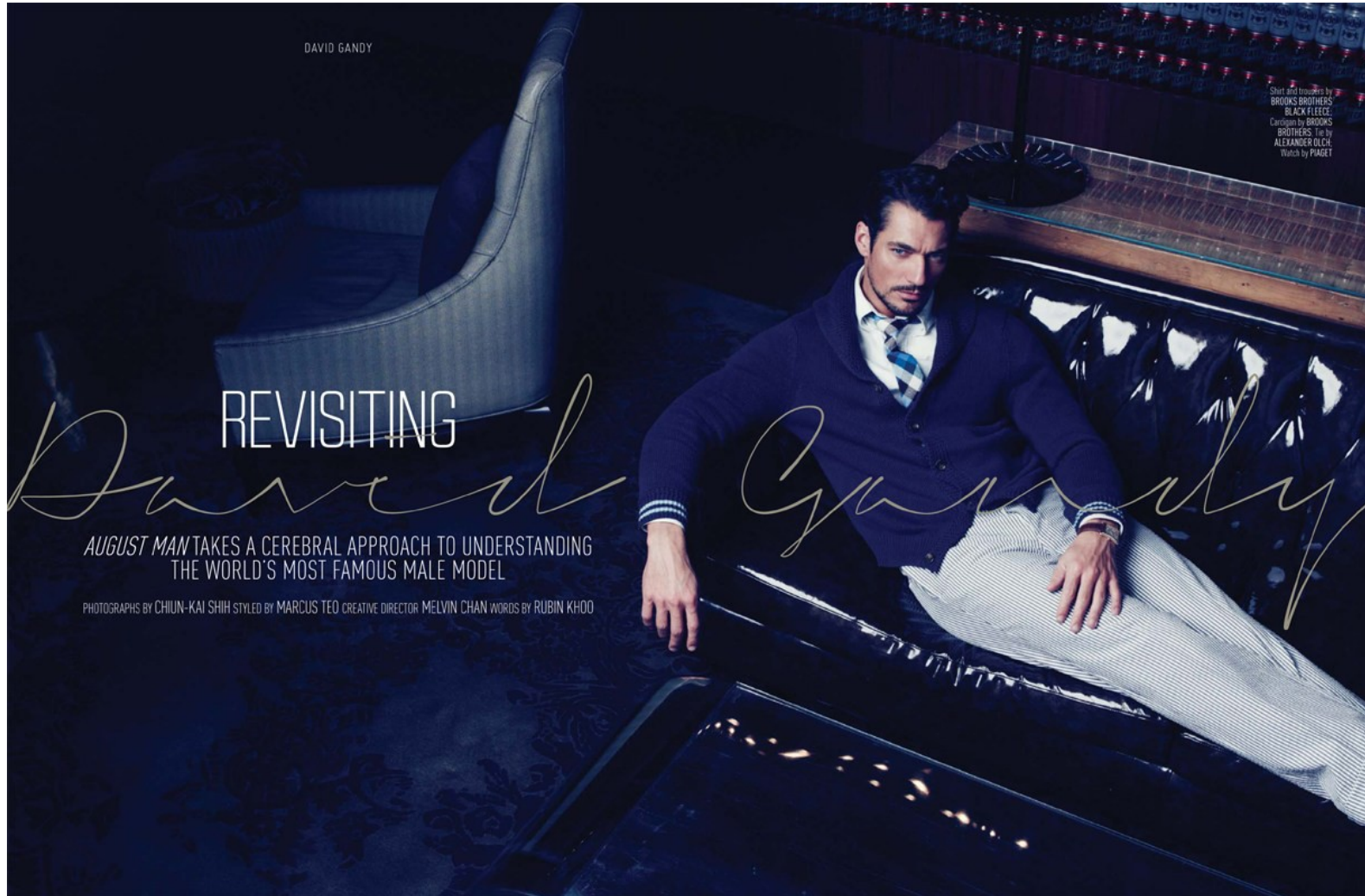
# Art Department



Scott McMahan

[www.art-dept.com](http://www.art-dept.com)

# Art Department

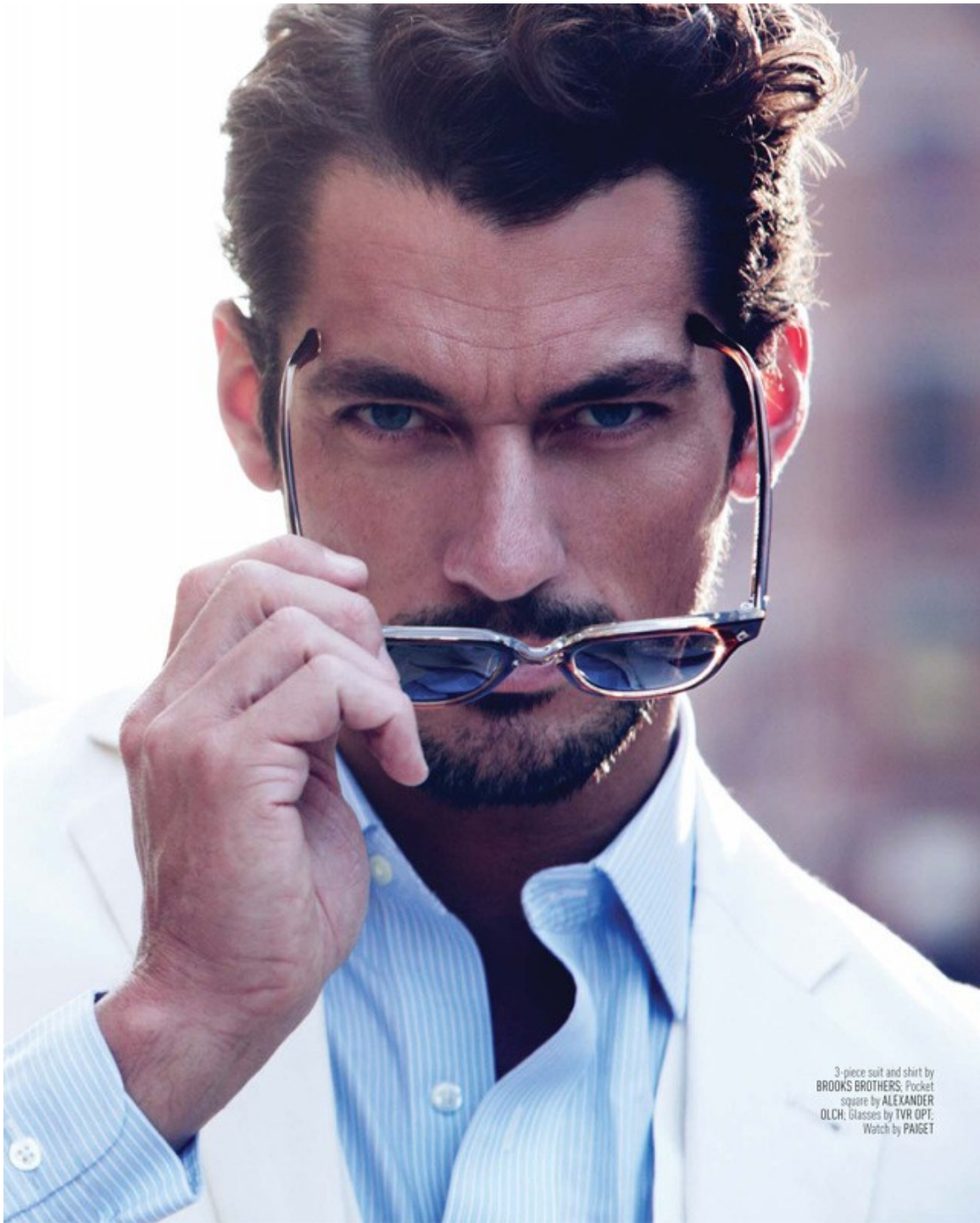


Scott McMahan

[www.art-dept.com](http://www.art-dept.com)



# Art Department



3-piece suit and shirt by  
BROOKS BROTHERS; Pocket  
square by ALEXANDER  
OLCH; Glasses by TVR OPT.  
Watch by PAISET

## Scott McMahan

[www.art-dept.com](http://www.art-dept.com)

# Art Department

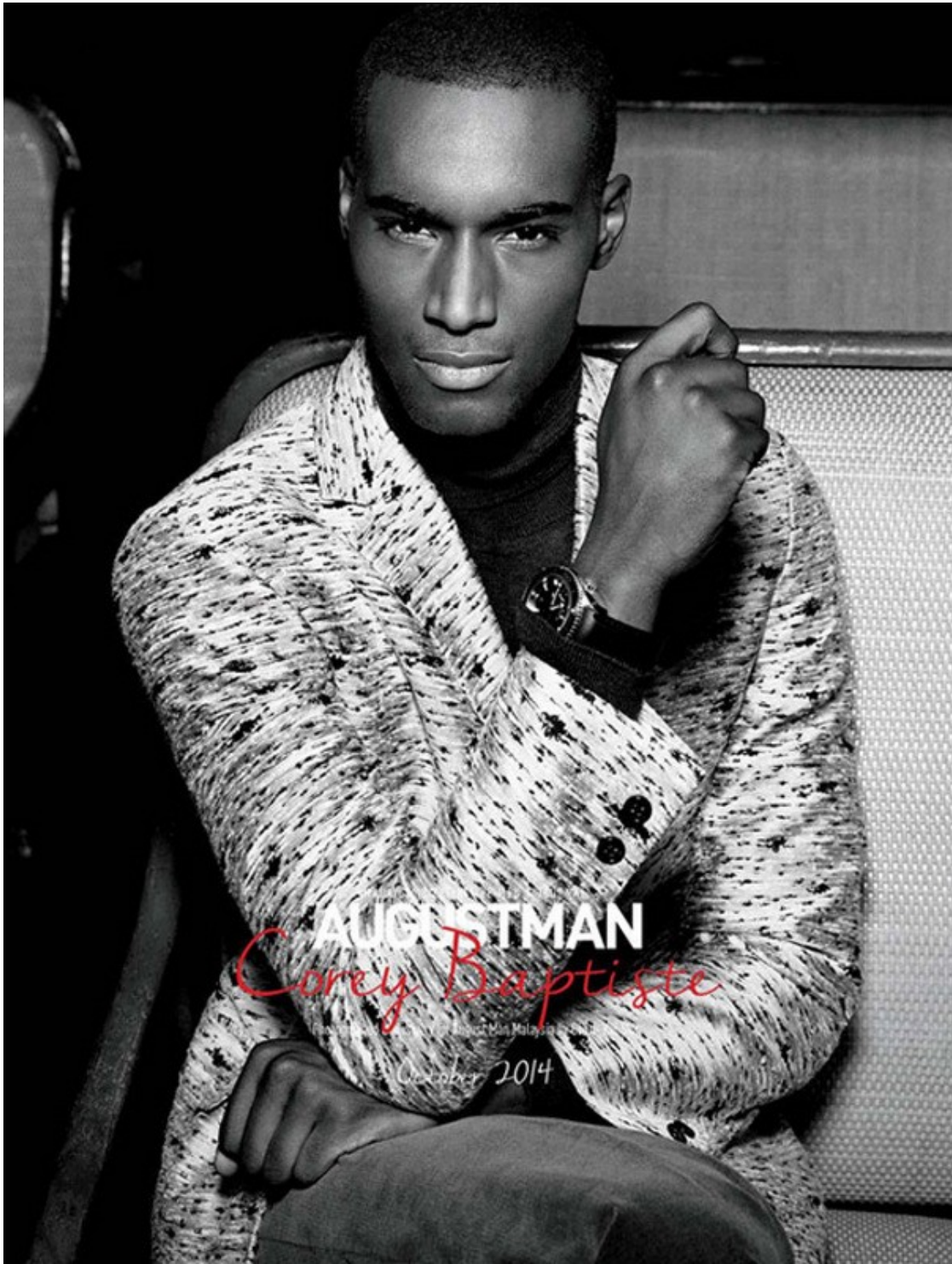


Scott McMahan

[www.art-dept.com](http://www.art-dept.com)



# Art Department



Scott McMahan

[www.art-dept.com](http://www.art-dept.com)

# Art Department



Scott McMahan

[www.art-dept.com](http://www.art-dept.com)



# Art Department



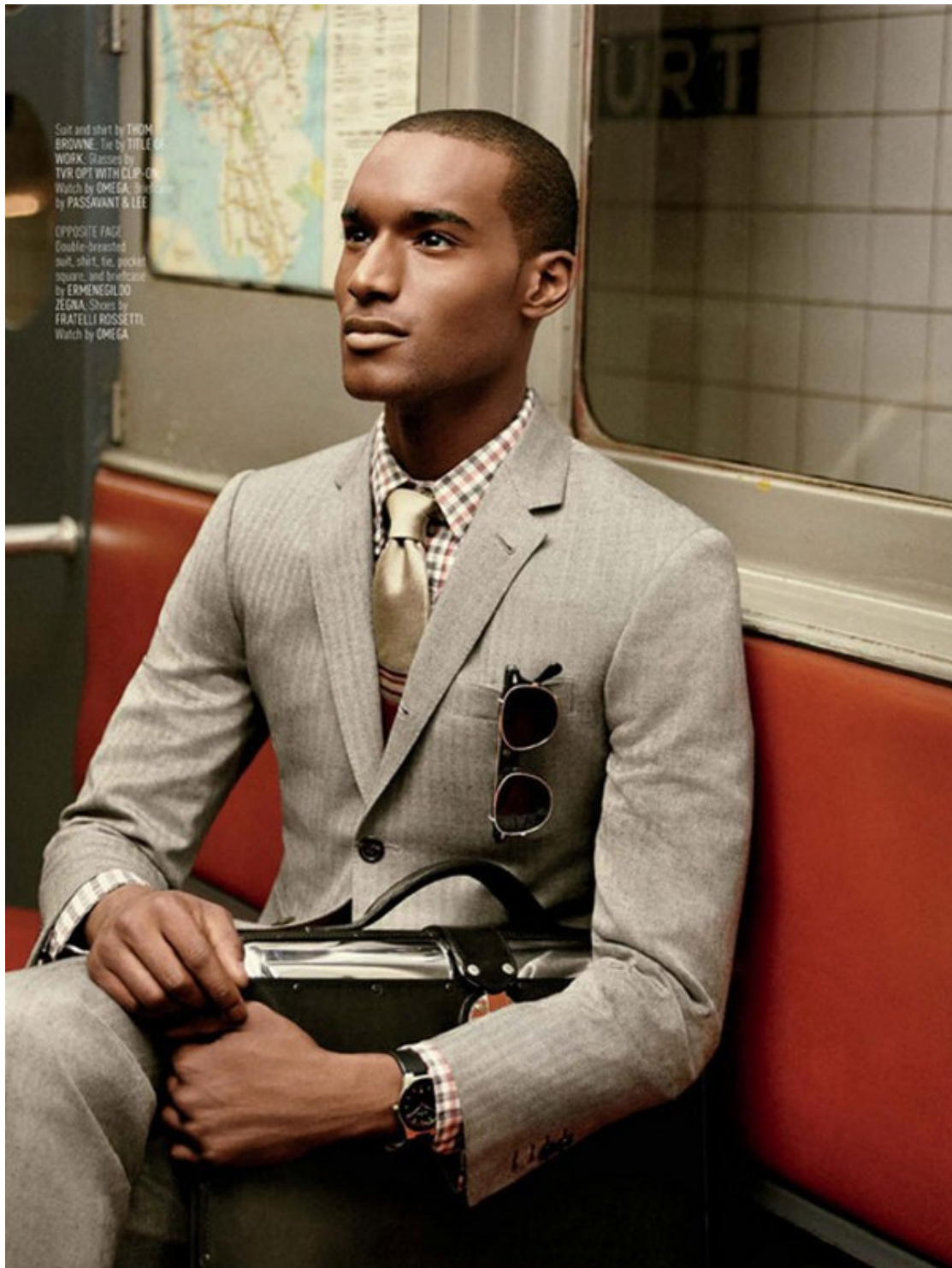
Coat, shirt, trousers and  
portfolio by BURBERRY  
PRORSUM. Tie by TITLE  
OF WORK. Tie bar by  
THE TIE BAR. Shoes by  
FRATELLI ROSSETTI

OPPOSITE PAGE  
Blazer, shirt and trousers  
by LOUIS VUITTON. Tie  
by THE TIE BAR. Bag  
and pocket square by  
ROBERT TALBOT  
Shoes by SANTONI  
Briefcase by MCM

## Scott McMahan

[www.art-dept.com](http://www.art-dept.com)

# Art Department

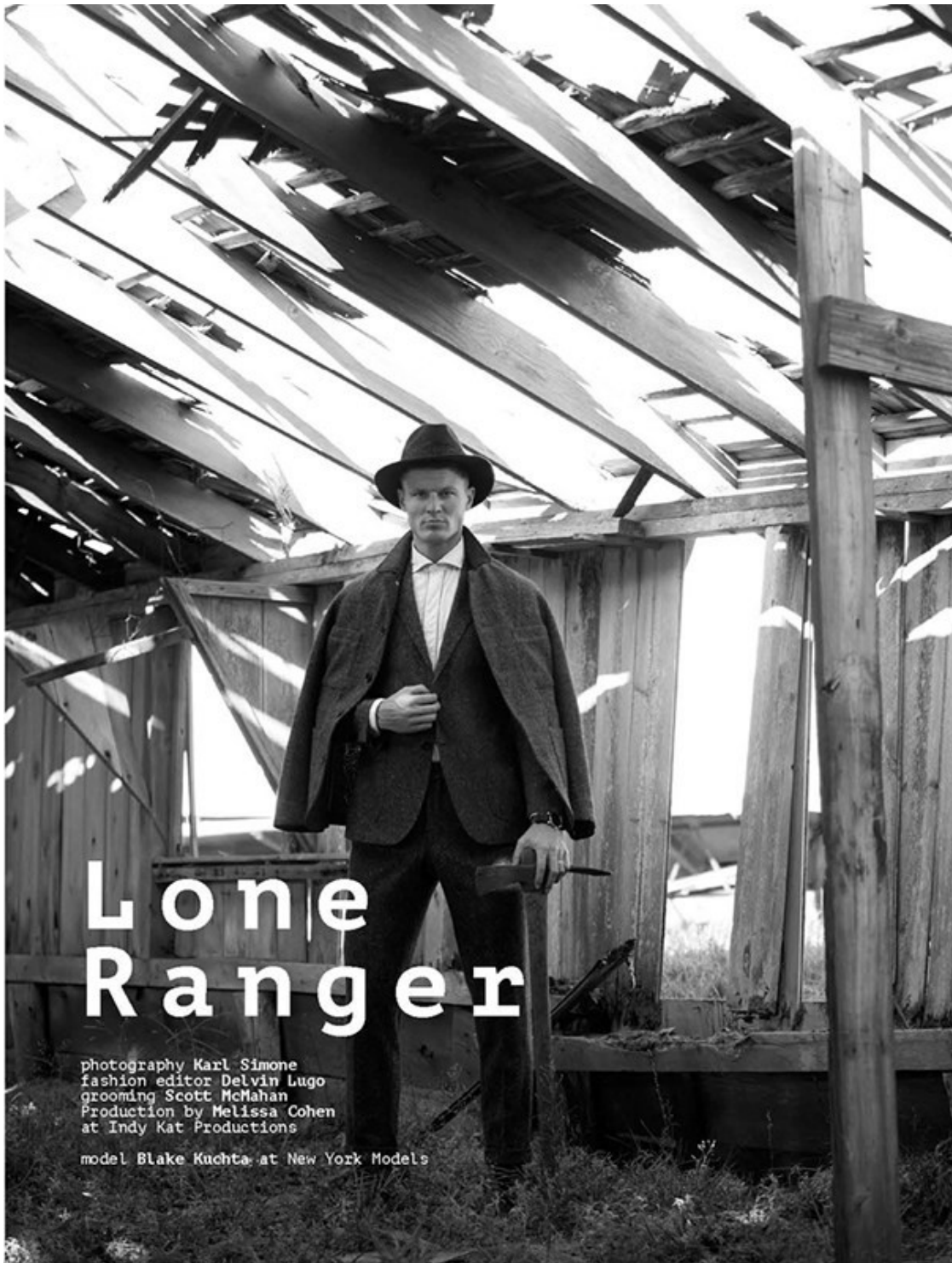


Scott McMahan

[www.art-dept.com](http://www.art-dept.com)



# Art Department



photography Karl Simone  
fashion editor Delvin Lugo  
grooming Scott McMahan  
Production by Melissa Cohen  
at Indy Kat Productions

model Blake Kuchta at New York Models

## Scott McMahan

[www.art-dept.com](http://www.art-dept.com)

# Art Department



Cardigan by EMENEGILDO ZEGNA  
White shirt by E. TAUTZ  
Beanie hat by LADS BY DEMYLEE

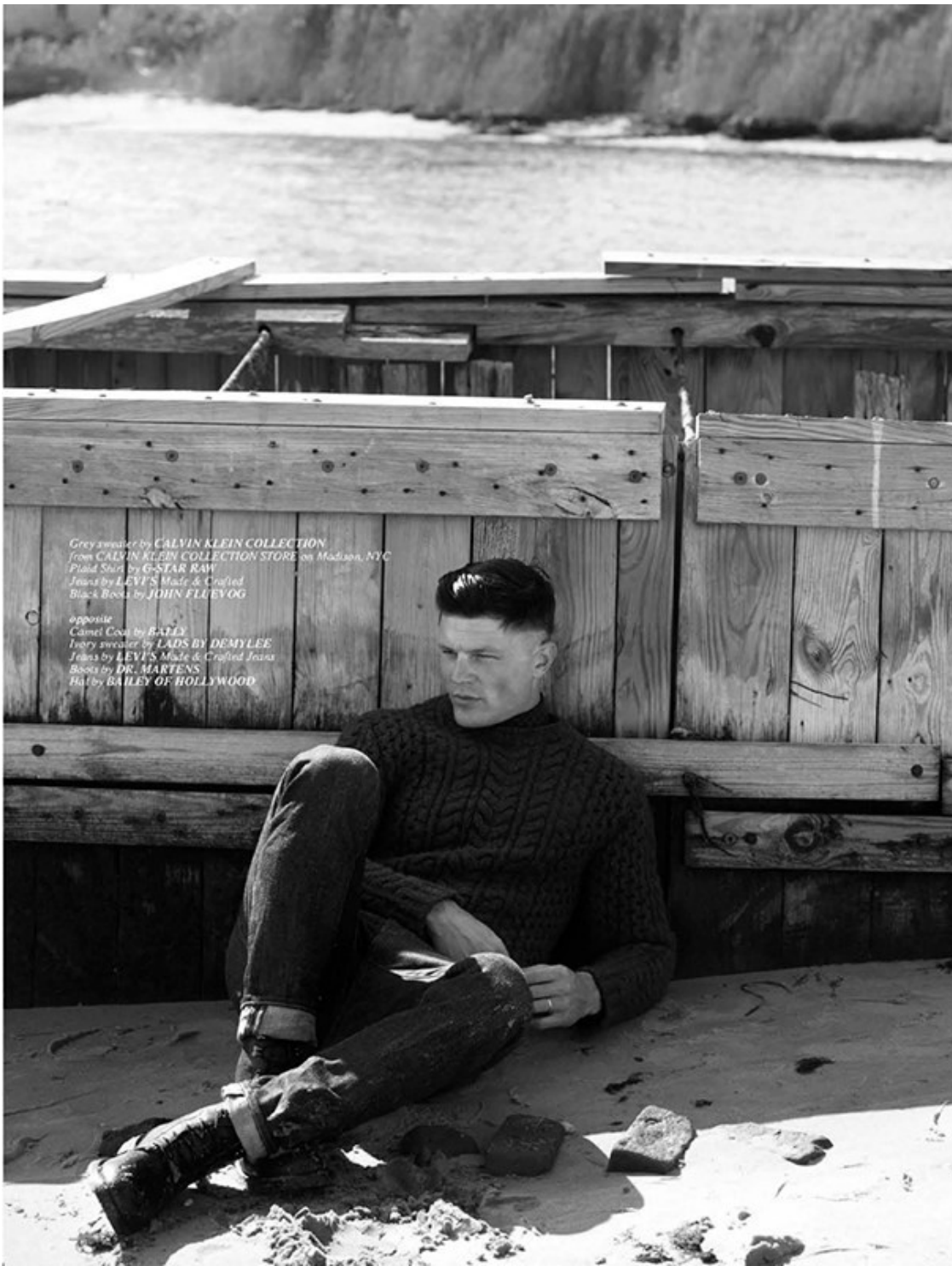
opposite  
sweater by PENFIELD  
shirt by E. TAUTZ  
Cashmere Sirotpants by LADS BY DEMYLEE  
Hat by EUGENIA KIM  
www.Eugeniakim.com  
Eyeglasses by WOLFGANG PROKSCH

## Scott McMahan

[www.art-dept.com](http://www.art-dept.com)



# Art Department



Grey sweater by **CALVIN KLEIN COLLECTION**  
From **CALVIN KLEIN COLLECTION STORE** on Madison, NYC  
Plaid Shirt by **G-STAR RAW**  
Jeans by **LEVI'S Made & Crafted**  
Black Boots by **JOHN FLUEVOG**

opposite  
Camel Coat by **BAILEY**  
Isbry sweater by **LADS BY DEMYLEE**  
Jeans by **LEVI'S Made & Crafted**  
Boots by **DR. MARTENS**  
Hat by **BAILEY OF HOLLYWOOD**

## Scott McMahan

[www.art-dept.com](http://www.art-dept.com)

# Art Department



Scott McMahan

[www.art-dept.com](http://www.art-dept.com)



# Art Department



Scott McMahan

[www.art-dept.com](http://www.art-dept.com)

# Art Department



Scott McMahan

[www.art-dept.com](http://www.art-dept.com)



# Art Department



Scott McMahan

[www.art-dept.com](http://www.art-dept.com)

# Art Department



Scott McMahan

[www.art-dept.com](http://www.art-dept.com)



# Art Department



Scott McMahan

[www.art-dept.com](http://www.art-dept.com)

# Art Department



Chris wears shirt by CK Calvin Klein. Glasses, vintage Ray-Ban from Silver Lining Opticians  
Groomer: Scott McMahan  
Photo Assistants: Jamie Onderdonk, Mauricio Lopez  
Styling Assistants: Staff Yotka, Adrian Manuel Weber, Eric Uvaydov  
Model: Chris Foltz © Ford NY, Josh Ferguson  
Special Thanks to Sam Doerfer, ProDH at Art & Commerce and Pat Ashley's.

## Scott McMahan

[www.art-dept.com](http://www.art-dept.com)



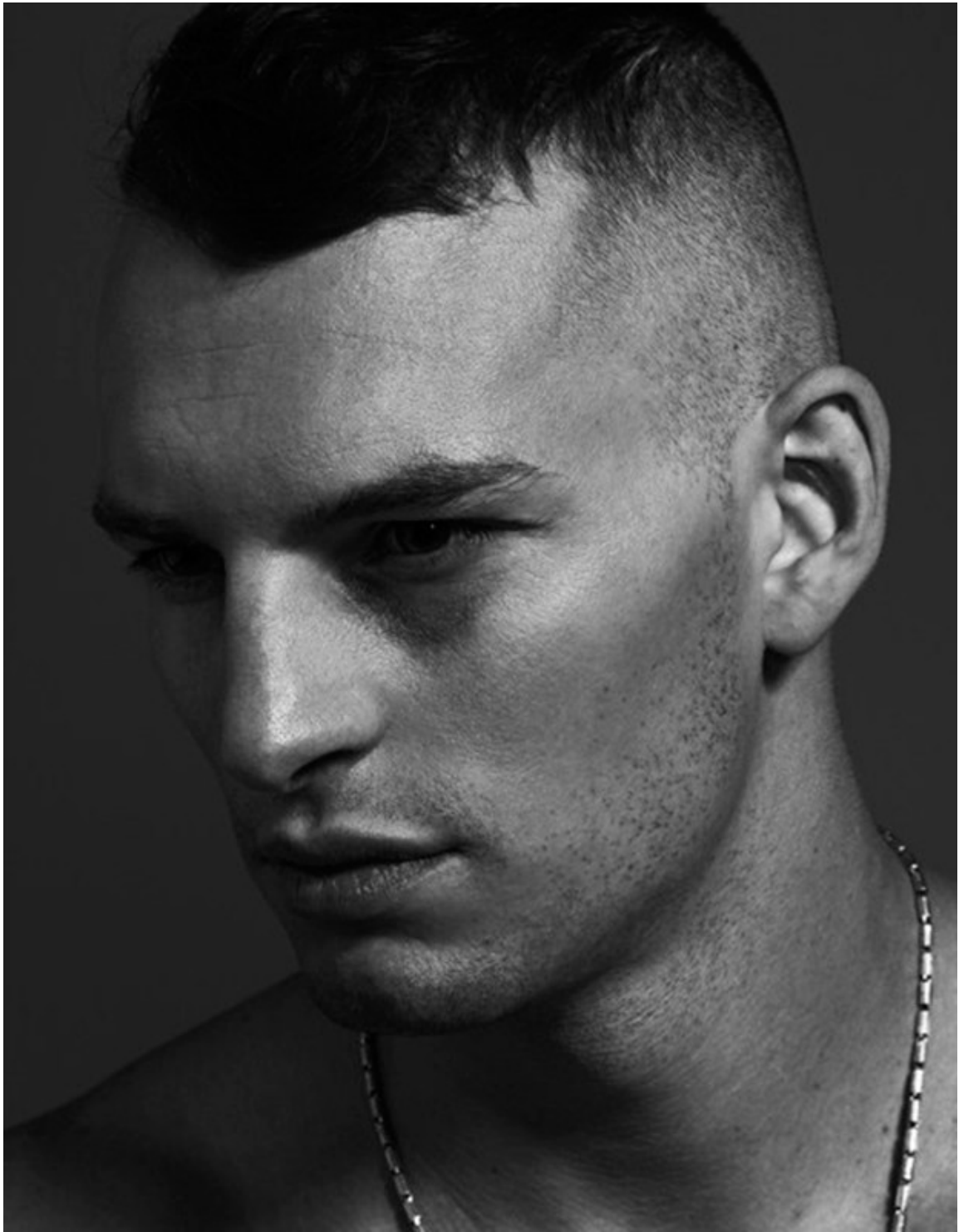
# Art Department



Scott McMahan

[www.art-dept.com](http://www.art-dept.com)

# Art Department



Scott McMahan

[www.art-dept.com](http://www.art-dept.com)



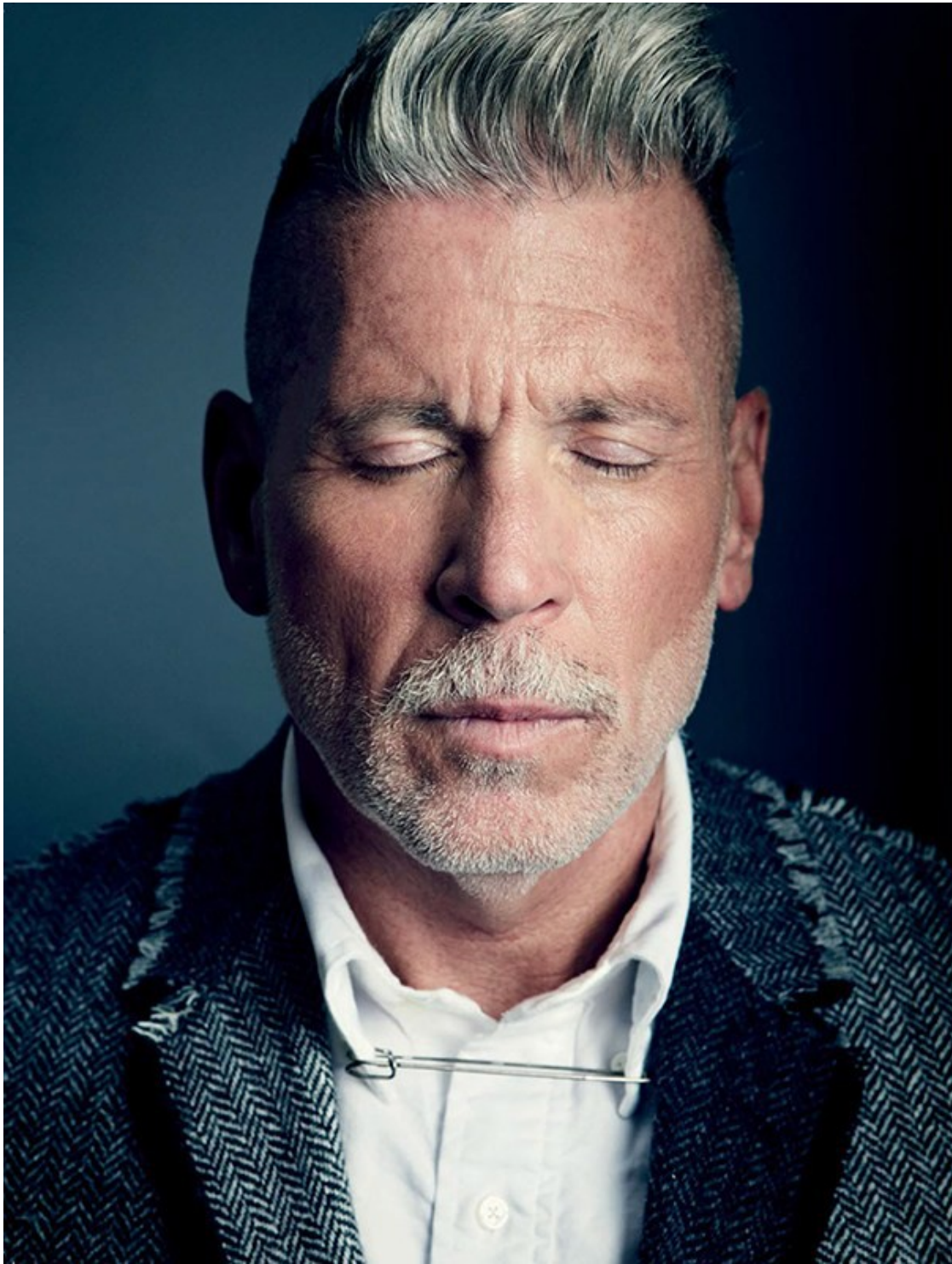
# Art Department



Scott McMahan

[www.art-dept.com](http://www.art-dept.com)

# Art Department

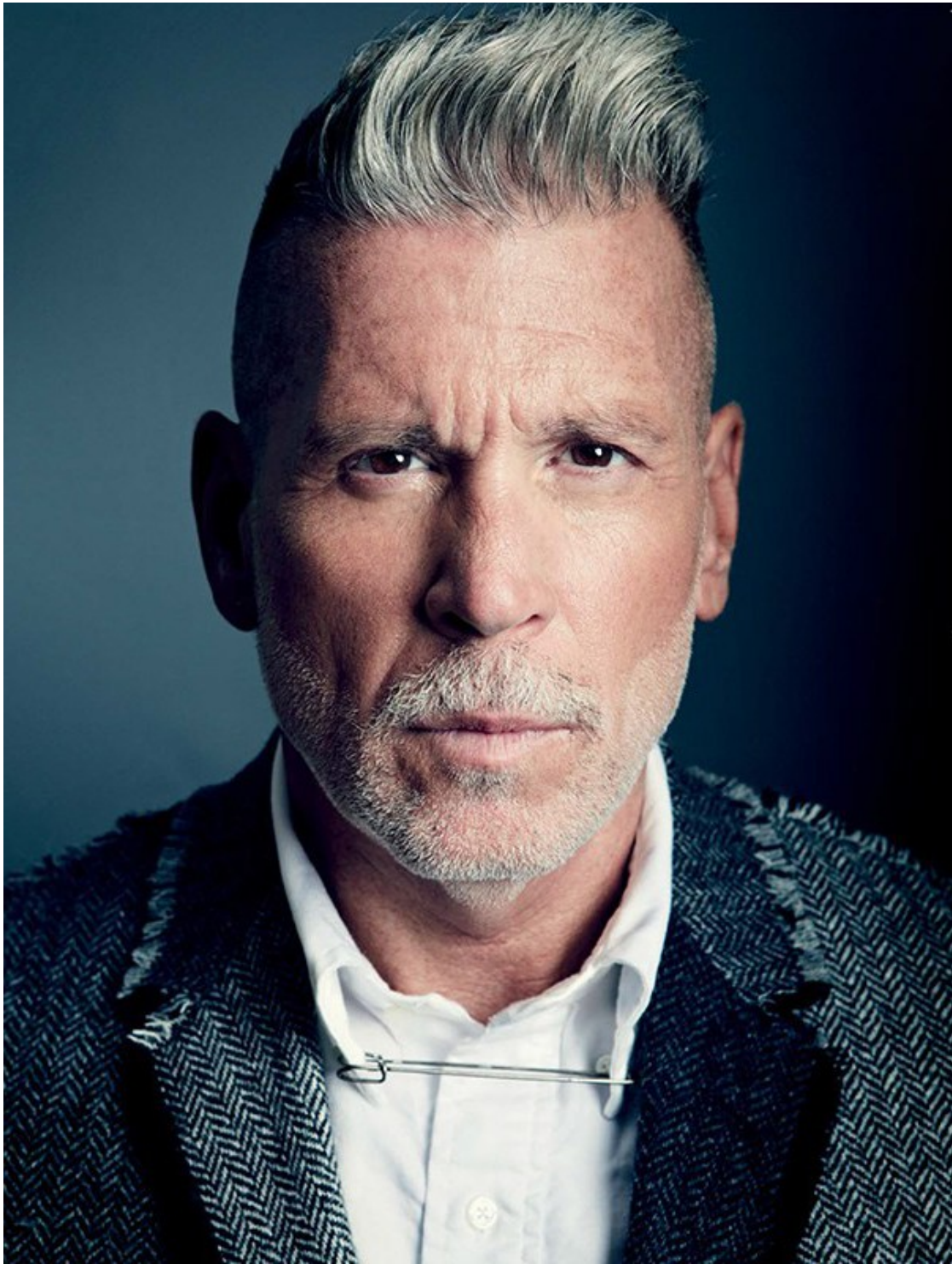


Scott McMahan

[www.art-dept.com](http://www.art-dept.com)



# Art Department



Scott McMahan

[www.art-dept.com](http://www.art-dept.com)

# Art Department



**JOSEPH COLEMAN, 47**  
**SECOND ACT: POET; PRESIDENT OF THE FIT REPORT**

Booked for his first big gig (a Guerlain ad) by photographer Peter Lindbergh after a chance meeting at a hotel, Coleman modeled for a decade before starting the Fit Report, a sizing consultant for fashion brands, in 2006. He is also a published poet, contributing works to Esquire and an upcoming edition of *The New Criterion*.

**OLD RULE: NO WHITE JEANS IN WINTER.**  
**NEW RULE: ANY COLOR JEANS WORK ANY TIME OF THE YEAR. EXCEPT YELLOW, WHICH WORK NEVER.**

162 ESQUIRE • DECEMBER 2013

Scott McMahan

[www.art-dept.com](http://www.art-dept.com)



# Art Department



**Esquire**  
STYLE

**OLD RULE**  
Sweatshirts: for the gym, the field, or the couch.

**NEW RULE**  
A fitted sweatshirt: for anywhere and with anything—even under a suit.

**This page:** Two-button wool-and-cashmere suit (\$3,895) and leather gloves (\$325) by Giorgio Armani; cotton sweatshirt (\$290) by Rag & Bone; leather shoes (\$440) by Grenson; silk scarf (\$165) by Gant Ruggier; leather bag (\$698) by Coach. **Opposite:** Wool-and-cashmere sweater (\$925) by Dolce & Gabbana; cotton shirt (\$440) by Finamore; cotton undershirt (\$38 for three) by Calvin Klein Underwear; cotton jeans (\$650) by Gucci; leather-and-rubber boots (\$140) by Sperry Top-Sider; steel Calibre de Cartier chronograph (\$11,200) by Cartier; acrylic hat (\$8) by Carhartt.

**WALTER SCHUPFER, 48**  
**SECOND ACT: AGENT AND OWNER OF WALTER SCHUPFER MANAGEMENT**  
Walter Schupfer's story is a cautionary tale with a happy ending: "Helmut Lang saw me in a bar in Vienna when I was fifteen. I think it was a school night." Cut to Schupfer modeling for houses like Valentino and Gaultier. And when being in front of the camera ceased to be as compelling as what was going on behind it, he called everyone he knew for advice and started Walter Schupfer Management, which has represented photographers, stylists, and set designers for nearly twenty years.

163

Scott McMahan

www.art-dept.com

# Art Department

## OLD RULE

NO SHINY, PUFFY,  
OR BRIGHTLY  
COLORED OUTER-  
WEAR WITH  
TAILORING.

## NEW RULE

SOME HIGH-  
LOW CONTRAST  
WILL KNOCK THE  
STUFFINESS OUT  
OF YOUR SUIT.



**This page:** Cotton-nylon-and-down vest (\$225), two-button wool suit (\$1,895), and cotton shirt (\$90) by Polo Ralph Lauren; silk tie (\$215) by Ralph Lauren Purple Label; leather boots (\$348) by Cole Haan; steel Portuguese hand-wound Eight Days watch (\$10,800) by IWC.

**Opposite:** Leather jacket (\$2,595) by Belstaff; cotton shirt (\$185) by Thomas Pink; wool tie (\$88) by Ernest Alexander; titanium Speedmaster watch (\$9,800) by Omega.

### KWAME DAVIS, 38 SECOND ACT: BOXER

"The main thing you work on when you're a model and a boxer is your defense," says this former Joseph Abboud and John Bartlett model, who usually trains in the gym five hours a day to maintain his five-for-five knockout record in professional fights. And there are other lessons from the runway that help the light heavyweight in the ring: "I learned charisma from modeling. I'm a showman. Plus, the more people that see you in magazines, the more people want to see you fight."

## Scott McMahan

www.art-dept.com



# Art Department

**ADAM FLAMER-CALDERA, 26**

**SECOND ACT:  
THIRD-YEAR MEDICAL  
STUDENT AT COLUMBIA  
UNIVERSITY**

Sure, his hundred-hour-a-week pediatric-care rotation at the Harlem Hospital Center exhausts him, but after seven years of modeling for brands like Michael Bastian and Gucci, Flamer-Caldera is "used to not sleeping." Another typical experience for the man who still models in between twelve-hour shifts: "My patients say, 'I think I recognize you from somewhere.' I tell them, 'You don't know me. I think you might be delirious from fever.'"



Esquire  
STYLE

OLD  
RULE

NECKTIES AND  
LEATHER JACKETS DO  
NOT BELONG IN THE  
SAME SENTENCE, MUCH  
LESS ON THE SAME  
MAN AT THE SAME TIME.

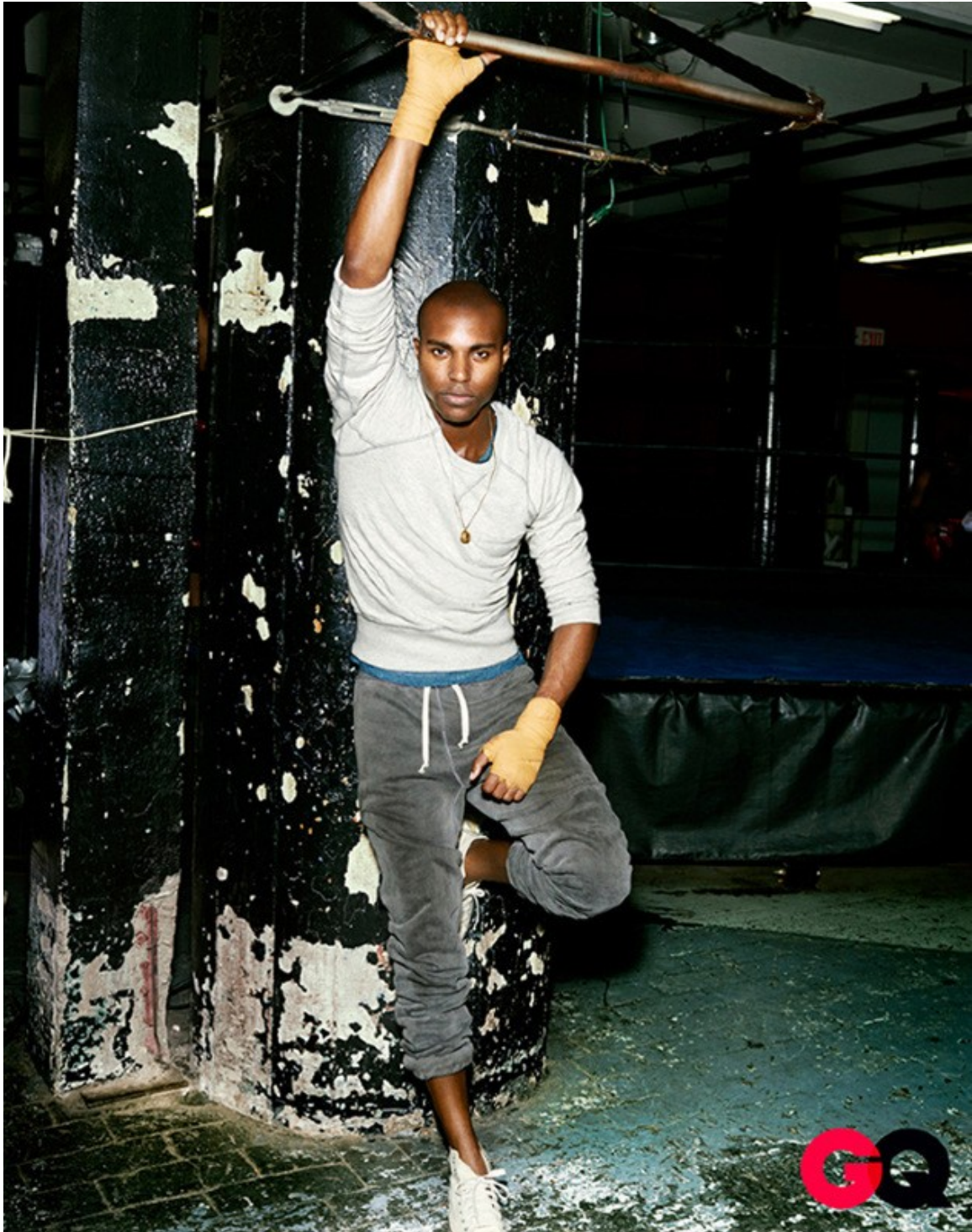
NEW  
RULE

SUB OUT YOUR BLAZER  
FOR A LEATHER JACKET  
TO ACHIEVE THE  
RIGHT AMOUNT OF EDGE.

## Scott McMahan

[www.art-dept.com](http://www.art-dept.com)

# Art Department



Scott McMahan

[www.art-dept.com](http://www.art-dept.com)



# Art Department



Scott McMahon

[www.art-dept.com](http://www.art-dept.com)

# Art Department



Scott McMahan

[www.art-dept.com](http://www.art-dept.com)



# Art Department



Scott McMahan

[www.art-dept.com](http://www.art-dept.com)



# Art Department



Scott McMahan

[www.art-dept.com](http://www.art-dept.com)



# Art Department



Scott McMahan

[www.art-dept.com](http://www.art-dept.com)

# Art Department



Scott McMahan

[www.art-dept.com](http://www.art-dept.com)