

Art Department



Scott McMahan

www.art-dept.com

Art Department



Scott McMahan

www.art-dept.com

Art Department



Scott McMahan

www.art-dept.com

Art Department



Scott McMahan

www.art-dept.com

Art Department



Scott McMahan

www.art-dept.com

Art Department



Scott McMahan

www.art-dept.com

Art Department



Scott McMahan

www.art-dept.com

Art Department



Scott McMahan

www.art-dept.com

Art Department



Scott McMahan

www.art-dept.com

Art Department



Scott McMahan

www.art-dept.com

Art Department



Scott McMahan

www.art-dept.com

Art Department



Scott McMahan

www.art-dept.com

Art Department



Scott McMahan

www.art-dept.com

Art Department



Scott McMahan

www.art-dept.com

Art Department



Scott McMahan

www.art-dept.com

Art Department



Scott McMahan

www.art-dept.com

Art Department



Scott McMahan

www.art-dept.com

Art Department



Scott McMahan

www.art-dept.com

Art Department



Scott McMahan

www.art-dept.com

Art Department



Scott McMahan

www.art-dept.com

Art Department



Scott McMahan

www.art-dept.com

Art Department



Scott McMahan

www.art-dept.com

Art Department



Scott McMahan

www.art-dept.com

Art Department



Scott McMahan

www.art-dept.com

Art Department



Scott McMahan

www.art-dept.com

Art Department



Scott McMahan

www.art-dept.com

Art Department



Scott McMahan

www.art-dept.com

Art Department



Scott McMahan

www.art-dept.com

Art Department



Scott McMahan

www.art-dept.com

Art Department



Scott McMahan

www.art-dept.com


Art Department



Scott McMahan

www.art-dept.com

Art Department



The Blue Jean

A go-to pair of jeans isn't just a summer essential. It's a year-round essential. Ours are made from American Cone Denim®, and have just a little bit of stretch for a comfortable fit.

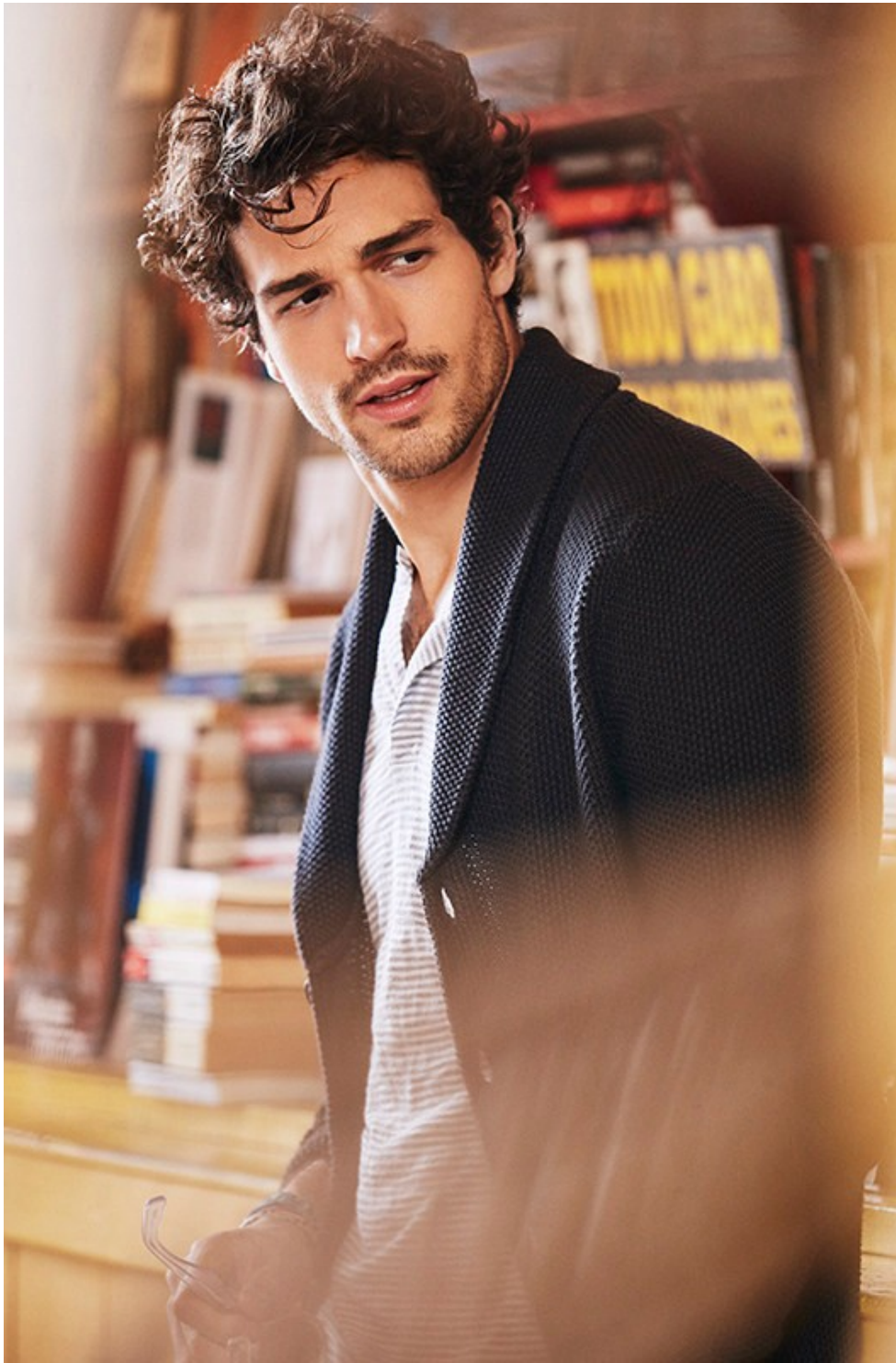
Classic Pique Polo \$58
The Blue Jean, Broken-In Light Wash \$108

29

Scott McMahan

www.art-dept.com

Art Department



Scott McMahan

www.art-dept.com

Art Department



Scott McMahan

www.art-dept.com

Art Department



Scott McMahan

www.art-dept.com

Art Department



Scott McMahan

www.art-dept.com

Art Department



Scott McMahan

www.art-dept.com

Art Department

A man in a blue suit and purple tie is leaning against a classic silver car in a grand, ornate building. The man is looking directly at the camera with a slight smile. The car is a classic sedan with dual round headlights. The background features large, arched windows with intricate architectural details.

The Jetsetter Suit

Your all-purpose suit with a touch of stretch for extra comfort. When you're going the distance, the Jetsetter Suit makes it look easy.

Available in Slim and Standard Fits

The Jetsetter Dress Shirt \$128
The Jetsetter Suit \$550
Americano Necktie \$98

Scott McMahan

www.art-dept.com

Art Department



Scott McMahan

www.art-dept.com

Art Department



Scott McMahan

www.art-dept.com

Art Department



ZACHARY PRELL

Scott McMahan

www.art-dept.com

Art Department



ZACHARY PRELL

Scott McMahan

www.art-dept.com

Art Department



ZACHARY PRELL

Scott McMahan

www.art-dept.com

Art Department



Scott McMahan

www.art-dept.com

Art Department



Scott McMahan

www.art-dept.com

Art Department



Scott McMahan

www.art-dept.com

Art Department



Scott McMahan

www.art-dept.com

Art Department



Scott McMahan

www.art-dept.com

Art Department



Scott McMahan

www.art-dept.com

Art Department



Scott McMahan

www.art-dept.com

Art Department



Scott McMahan

www.art-dept.com

Art Department



Scott McMahan

www.art-dept.com

Art Department



Scott McMahan

www.art-dept.com

Art Department



Scott McMahan

www.art-dept.com

Art Department



Scott McMahan

www.art-dept.com

Art Department



Scott McMahan

www.art-dept.com

Art Department



Scott McMahan

www.art-dept.com

Art Department



Scott McMahan

www.art-dept.com

Art Department



Scott McMahan

www.art-dept.com

Art Department

Lauren Ralph Lauren
Suits, Sportcoats & Trousers



LAUREN RALPH LAUREN
Two-button, center-vent jacket
with flat-front pants in brown
windowpane wool; 38-42S,
38-50R, 40-48L PLUS 41 & 43R
Orig. \$595, Sale \$279.50,
WITH PASS \$238

10 LORDANDTAYLOR.COM

Scott McMahan

www.art-dept.com

Art Department



Scott McMahan

www.art-dept.com

Art Department



Scott McMahan

www.art-dept.com

Art Department



Scott McMahan

www.art-dept.com

Art Department



Scott McMahan

www.art-dept.com

Art Department



Scott McMahan

www.art-dept.com

Art Department



Scott McMahan

www.art-dept.com

Art Department



Scott McMahan

www.art-dept.com

Art Department



Scott McMahán

www.art-dept.com

Art Department



Scott McMahan

www.art-dept.com

Art Department



Scott McMahan

www.art-dept.com

Art Department



Scott McMahan

www.art-dept.com

Art Department



GRAND TETON NATIONAL PARK

Without a doubt, our most memorable days were spent in the Grand Teton National Park. The mountains were stunning, the open range was sight to behold, and we learned the hard way to always watch out for crossing buffalo. Out there, you never know when you might stumble upon a herd or two.

14

BONOBOS.COM

Woodland Alpaca Blend Crew \$48
Hudson Brushed Twill Shirt \$58

15

Scott McMahan

www.art-dept.com

Art Department



Scott McMahan

www.art-dept.com

Art Department



Scott McMahan

www.art-dept.com

Art Department



Scott McMahan

www.art-dept.com

Art Department



Scott McMahan

www.art-dept.com

Art Department



Scott McMahan

www.art-dept.com

Art Department



Scott McMahan

www.art-dept.com

Art Department



The Capesman Grey Windowpane Suit \$690
The American Dress Shirt \$28
Cotton Necktie \$38
The Herald Square \$42

Scott McMahan

www.art-dept.com

Art Department



Scott McMahan

www.art-dept.com

Art Department

Inside The Manor

Alder Manor was originally built by a copper tycoon to serve as his country estate on the Hudson River. Over the years, this elegant manor has seen everything from inauguration balls to Bowring Twenties-era hauses, and it is still used today as a popular shoot location for some of your favorite TV shows and movies. Don't be surprised if a detail or room looks familiar—you very well may have seen it before.

The Capstone White Flannel
Tuxedo Jacket \$595
The Americana Dress Shirt
Tuxedo Pique Bib \$48
Satin Tuxedo Bowtie \$68
Grenson Morris Dress Shoe \$375



Scott McMahan

www.art-dept.com

Art Department



Scott McMahan

www.art-dept.com

Art Department



Scott McMahan

www.art-dept.com

Art Department



Scott McMahan

www.art-dept.com

Art Department



The Foundation Suit, Tweed \$740
The Americano Dress Shirt \$158
The Americano Necktie \$98

46

BONOBOS.COM

Scott McMahan

www.art-dept.com

Art Department



The Foundation Suit

This is the classic, expertly-tailored suit that every guy should have on hand. Made from Italian-milled Marzotto® wool and available in four versatile colors—navy, grey, charcoal and black—our Foundation Suit is perfect for everything from presentations to parties.

The Foundation Suit, Italian Wool \$695
Daily Grind Dress Shirt \$39
Wool Necktie \$85
Premium Dress Shoe \$430

47

Scott McMahan

www.art-dept.com