

Art Department



Ashley Lynn Hall

www.art-dept.com

Art Department



Ashley Lynn Hall

www.art-dept.com

Art Department



Ashley Lynn Hall

www.art-dept.com

Art Department



Ashley Lynn Hall

www.art-dept.com

Art Department



Ashley Lynn Hall

www.art-dept.com

Art Department



Ashley Lynn Hall

www.art-dept.com

Art Department



Ashley Lynn Hall

www.art-dept.com

Art Department



Ashley Lynn Hall

www.art-dept.com

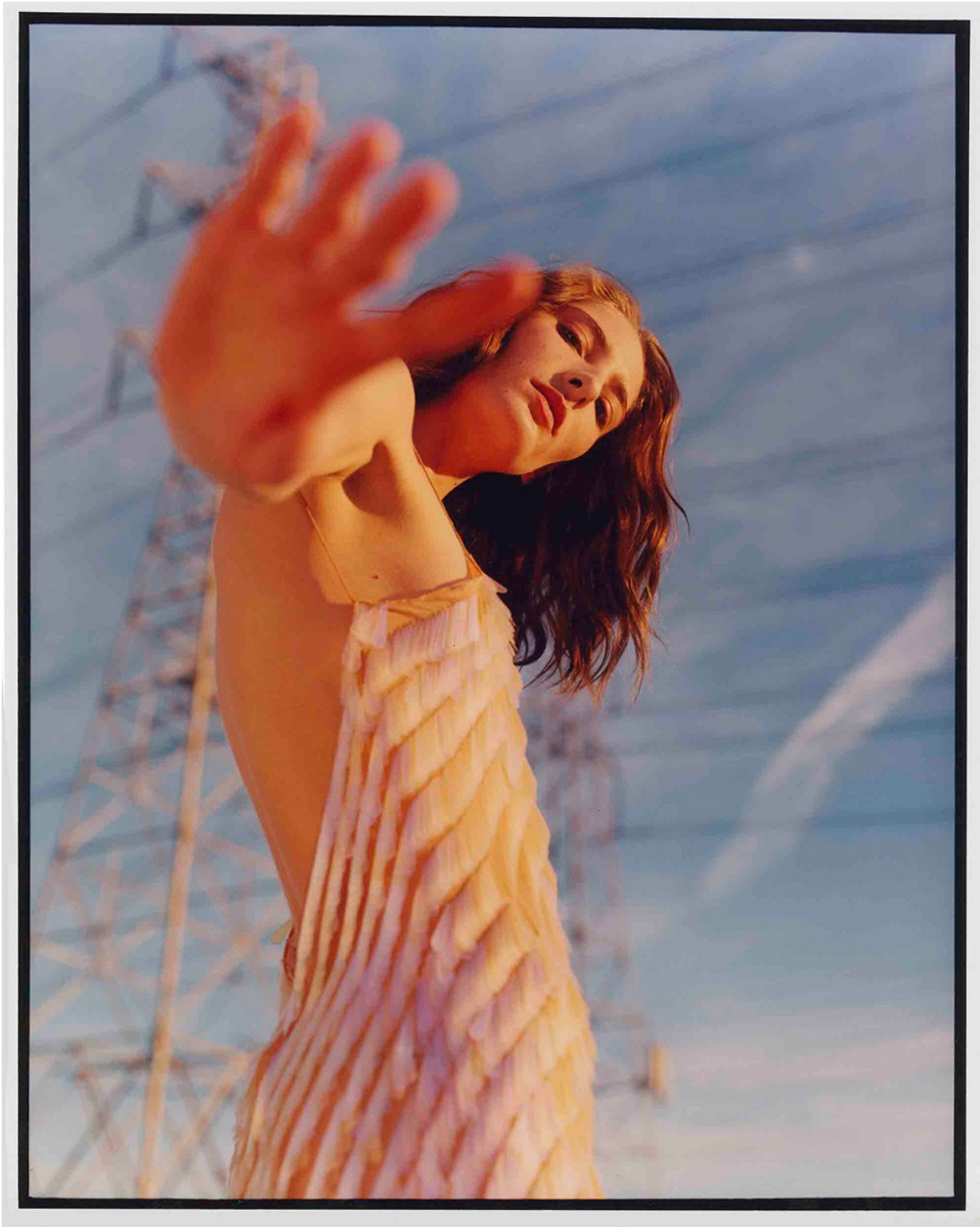
Art Department



Ashley Lynn Hall

www.art-dept.com

Art Department



Ashley Lynn Hall

www.art-dept.com

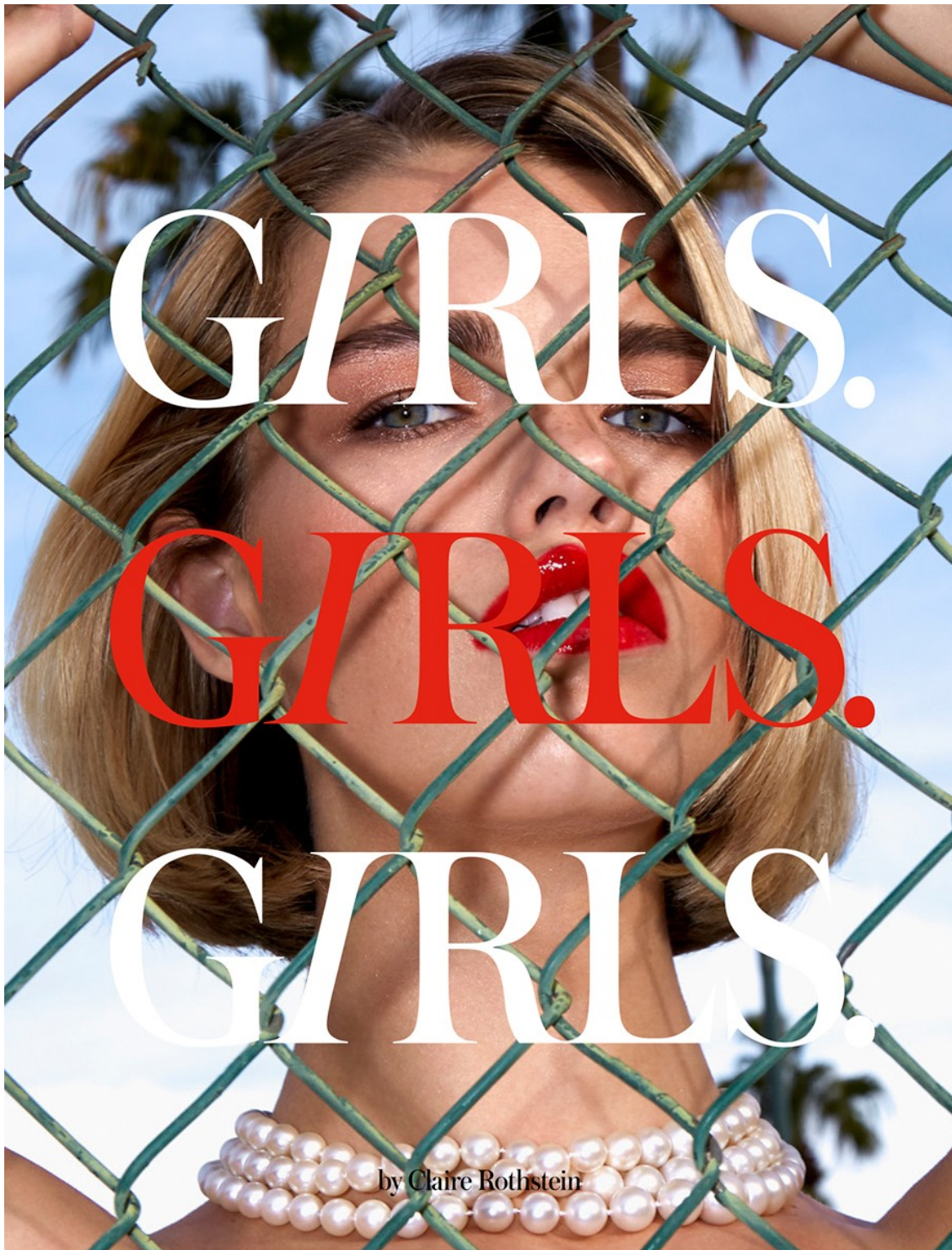
Art Department



Ashley Lynn Hall

www.art-dept.com

Art Department



Ashley Lynn Hall

www.art-dept.com

Art Department



120 GIRLS, GIRLS, GIRLS

LOOK #1 - South Sea Pearl Necklaces by Beladons

ISSUE N° 1, 2018 121

Ashley Lynn Hall

www.art-dept.com

Art Department



Ashley Lynn Hall

www.art-dept.com

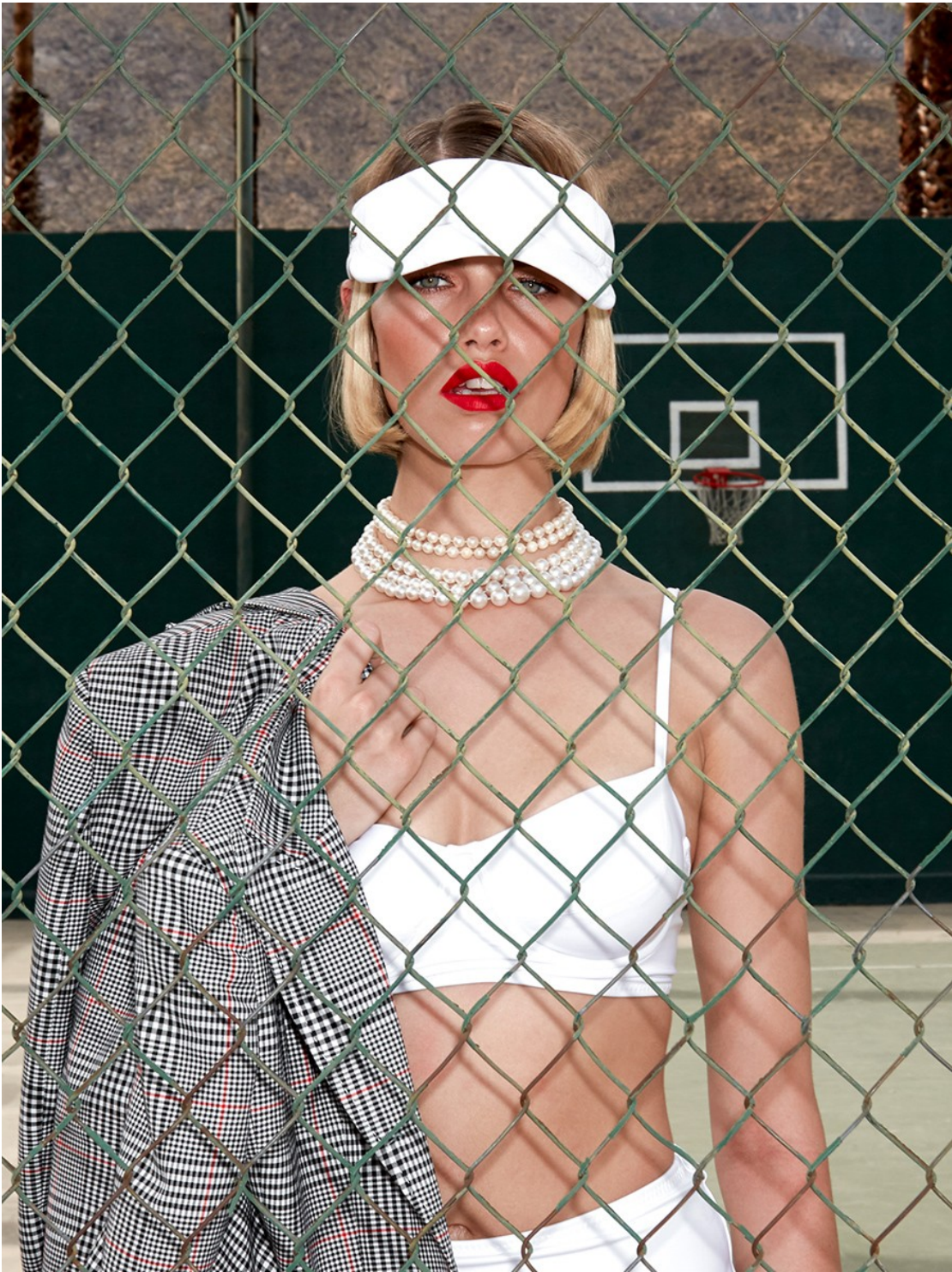
Art Department



Ashley Lynn Hall

www.art-dept.com

Art Department



Ashley Lynn Hall

www.art-dept.com

Art Department



Ashley Lynn Hall

www.art-dept.com

Art Department



Ashley Lynn Hall

www.art-dept.com

Art Department



Ashley Lynn Hall

www.art-dept.com

Art Department



Ashley Lynn Hall

www.art-dept.com

Art Department



Ashley Lynn Hall

www.art-dept.com

Art Department



Ashley Lynn Hall

www.art-dept.com

Art Department



Ashley Lynn Hall

www.art-dept.com

Art Department



Ashley Lynn Hall

www.art-dept.com

Art Department



Ashley Lynn Hall

www.art-dept.com

Art Department



Ashley Lynn Hall

www.art-dept.com

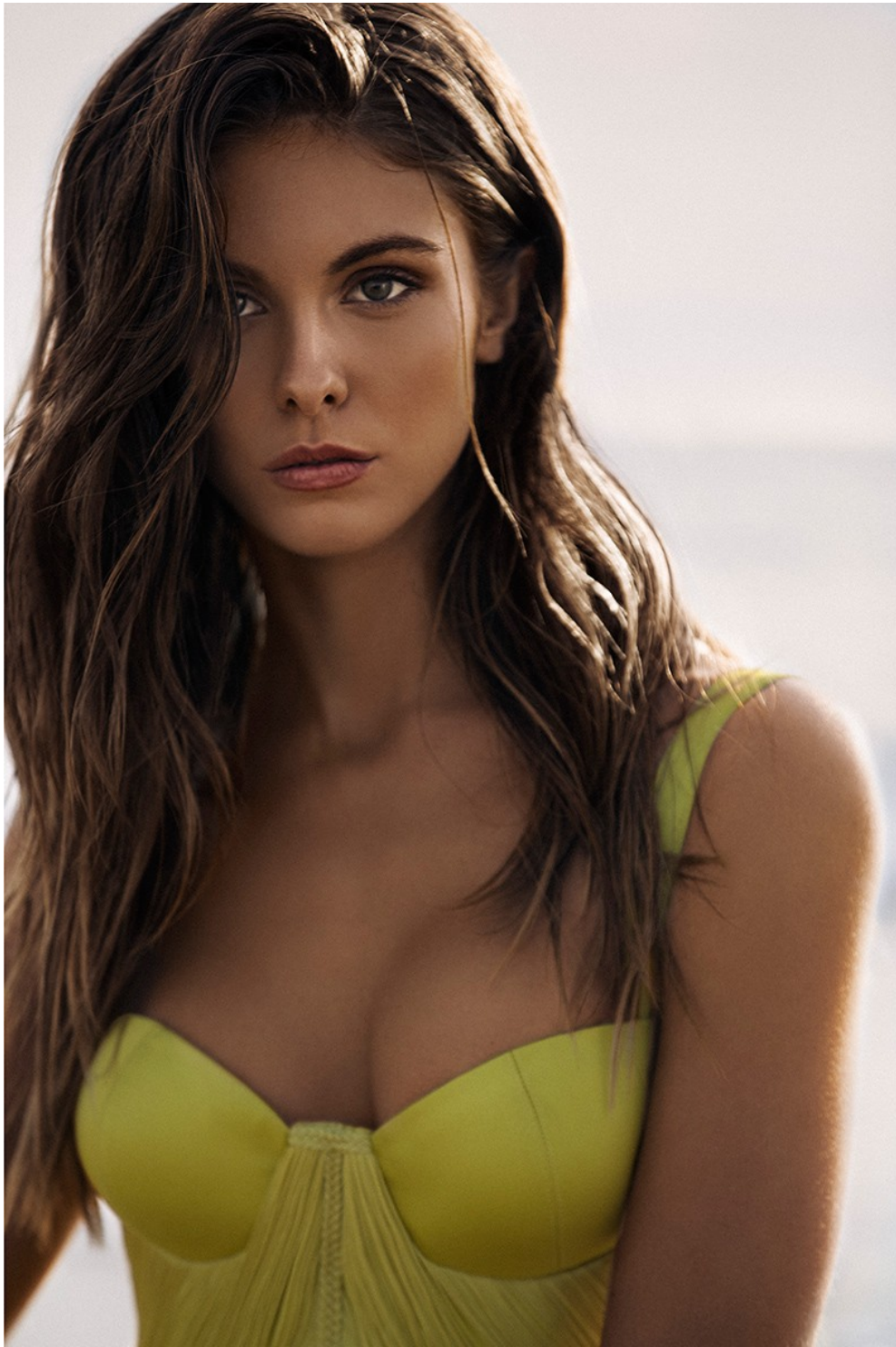
Art Department



Ashley Lynn Hall

www.art-dept.com

Art Department



Ashley Lynn Hall

www.art-dept.com

Art Department



Ashley Lynn Hall

www.art-dept.com

Art Department



Ashley Lynn Hall

www.art-dept.com

Art Department



Ashley Lynn Hall

www.art-dept.com

Art Department



Ashley Lynn Hall

www.art-dept.com

Art Department

Diese Seite:

Wow-Effekt: Mini-Bustierkleid aus Lackleder von Alexandre Vauthier, um 3080 Euro. Gürtel: Alexandre Vauthier. Strumpfhose: Item M6. Ohrringe: Paule Ka

Rechte Seite:

Emanzipierte Erotik signalisiert der extravagante Broken Suit: Der schwarze Kaschmir-Gebroek wird zur Pumpfhose aus Samt kombiniert. Ein weißes Smokinghemd aus Seide mit farblich abgesetzten Knöpfen macht den Gentlewoman-Stil perfekt. Mantel, Hose und Hemd von Giorgio Armani, um 5500, 1950 und 1550 Euro. Strumpfhose: Kunert. Slipper mit kleinem Absatz: Attilio Giusti Leombruni. Kreolen: Jennifer Fisher



Ashley Lynn Hall

www.art-dept.com

Art Department



Diese Seite:
*Asymmetrisches Blazerkleid mit verstärkter Schulterpartie. Von **Barbara Bul**, um 845 Euro*

Rechte Seite:
*Der glamouröse XL-Pelzmantel in Bicolor wird mit einem Lackledergürtel auf Taille gebracht. Mantel von **Givenchy**, um 3000 Euro. Gürtel und Ankle Boots ebenfalls von Givenchy. Strumpfhose: **Wolford**. Ohrringe: **Eddie Borgo***

172 · MADAME · September 2018

Ashley Lynn Hall

www.art-dept.com

Art Department



Ashley Lynn Hall

www.art-dept.com

Art Department



Ashley Lynn Hall

www.art-dept.com

Art Department



Ashley Lynn Hall

www.art-dept.com

Art Department



Ashley Lynn Hall

www.art-dept.com

Art Department



Ashley Lynn Hall

www.art-dept.com

Art Department



Ashley Lynn Hall

www.art-dept.com

Art Department



Ashley Lynn Hall

www.art-dept.com

Art Department



Ashley Lynn Hall

www.art-dept.com

Art Department



Ashley Lynn Hall

www.art-dept.com

Art Department



Ashley Lynn Hall

www.art-dept.com

Art Department



Ashley Lynn Hall

www.art-dept.com

Art Department



Ashley Lynn Hall

www.art-dept.com

Art Department



Ashley Lynn Hall

www.art-dept.com

Art Department



Ashley Lynn Hall

www.art-dept.com

Art Department



Ashley Lynn Hall

www.art-dept.com

Art Department



Ashley Lynn Hall

www.art-dept.com

Art Department



Ashley Lynn Hall

www.art-dept.com

Art Department



Ashley Lynn Hall

www.art-dept.com

Art Department



Ashley Lynn Hall

www.art-dept.com

Art Department



Ashley Lynn Hall

www.art-dept.com

Art Department



Ashley Lynn Hall

www.art-dept.com

Art Department



Ashley Lynn Hall

www.art-dept.com

Art Department



Ashley Lynn Hall

www.art-dept.com

Art Department



Ashley Lynn Hall

www.art-dept.com

Art Department



Ashley Lynn Hall

www.art-dept.com

Art Department



Ashley Lynn Hall

www.art-dept.com

Art Department



Ashley Lynn Hall

www.art-dept.com

Art Department



Ashley Lynn Hall

www.art-dept.com

Art Department



Ashley Lynn Hall

www.art-dept.com

Art Department



Ashley Lynn Hall

www.art-dept.com

Art Department



Ashley Lynn Hall

www.art-dept.com

Art Department



Ashley Lynn Hall

www.art-dept.com

Art Department



Ashley Lynn Hall

www.art-dept.com

Art Department



Ashley Lynn Hall

www.art-dept.com

Art Department



Ashley Lynn Hall

www.art-dept.com

Art Department



Ashley Lynn Hall

www.art-dept.com

Art Department



Ashley Lynn Hall

www.art-dept.com

Art Department



Ashley Lynn Hall

www.art-dept.com

Art Department



Ashley Lynn Hall

www.art-dept.com

Art Department



Ashley Lynn Hall

www.art-dept.com

Art Department



Ashley Lynn Hall

www.art-dept.com

Art Department



Ashley Lynn Hall

www.art-dept.com

Art Department



Ashley Lynn Hall

www.art-dept.com

Art Department



Ashley Lynn Hall

www.art-dept.com

Art Department



Ashley Lynn Hall

www.art-dept.com

Art Department



Ashley Lynn Hall

www.art-dept.com

Art Department



Ashley Lynn Hall

www.art-dept.com

Art Department



Ashley Lynn Hall

www.art-dept.com

Art Department



Ashley Lynn Hall

www.art-dept.com

Art Department



Ashley Lynn Hall

www.art-dept.com

Art Department



Ashley Lynn Hall

www.art-dept.com

Art Department



Ashley Lynn Hall

www.art-dept.com

Art Department



Ashley Lynn Hall

www.art-dept.com

Art Department



Ashley Lynn Hall

www.art-dept.com

Art Department



Ashley Lynn Hall

www.art-dept.com

Art Department



Ashley Lynn Hall

www.art-dept.com

Art Department



Ashley Lynn Hall

www.art-dept.com

Art Department



Ashley Lynn Hall

www.art-dept.com

Art Department



Ashley Lynn Hall

www.art-dept.com

Art Department



Ashley Lynn Hall

www.art-dept.com

Art Department



Ashley Lynn Hall

www.art-dept.com

Art Department



Ashley Lynn Hall

www.art-dept.com

Art Department



Ashley Lynn Hall

www.art-dept.com

Art Department



Ashley Lynn Hall

www.art-dept.com

Art Department



Ashley Lynn Hall

www.art-dept.com

Art Department



Ashley Lynn Hall

www.art-dept.com

Art Department



Ashley Lynn Hall

www.art-dept.com

Art Department



Ashley Lynn Hall

www.art-dept.com

Art Department



Ashley Lynn Hall

www.art-dept.com

Art Department



Ashley Lynn Hall

www.art-dept.com

Art Department



Ashley Lynn Hall

www.art-dept.com

Art Department



Ashley Lynn Hall

www.art-dept.com

Art Department



Ashley Lynn Hall

www.art-dept.com

Art Department



Chrystal: Jacket, *Few Mode*. Dress, Cosobello. Valerie: Bodysuit, Cosobello.

Ashley Lynn Hall

www.art-dept.com

Art Department



Ashley Lynn Hall

www.art-dept.com

Art Department



Ashley Lynn Hall

www.art-dept.com

Art Department



Sweater, Lambert Chicago. Swimwear Bottom, Blyne. Over the Knee Stockings, Woldford.

Ashley Lynn Hall

www.art-dept.com

Art Department



Ashley Lynn Hall

www.art-dept.com

Art Department



Ashley Lynn Hall

www.art-dept.com

Art Department



Ashley Lynn Hall

www.art-dept.com