

Art Department



Darine Sengseevong

www.art-dept.com

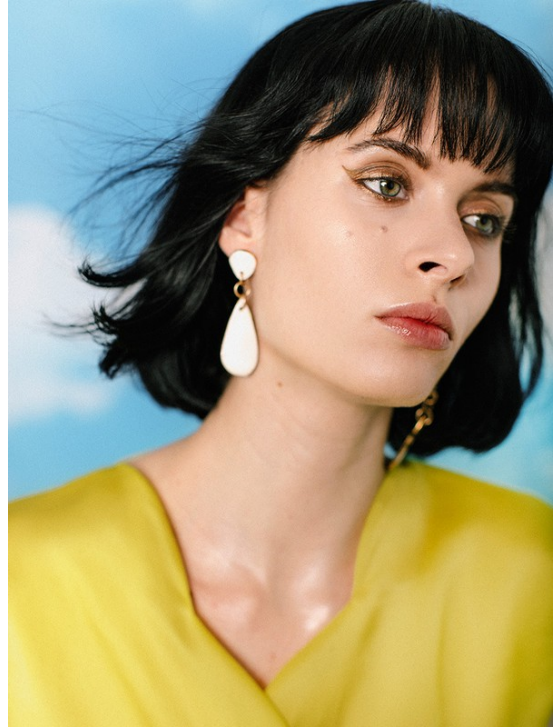
Art Department



Darine Sengseevong

www.art-dept.com

Art Department



Darine Sengseevong

www.art-dept.com

Art Department



Darine Sengseevong

www.art-dept.com

Art Department



Darine Sengseevong

www.art-dept.com

Art Department



Darine Sengseevong

www.art-dept.com

Art Department



Darine Sengseevong

www.art-dept.com

Art Department



Darine Sengseevong

www.art-dept.com

Art Department



Darine Sengseevong

www.art-dept.com

Art Department



Darine Sengseevong

www.art-dept.com

A Polaroid photograph of a woman with blonde hair pulled back, wearing a white lace collar and dark red lipstick, looking directly at the camera. The image is framed by a white border, characteristic of a physical print.



Darine Sengseevong